

Legend

- East Anglia ONE North Windfarm Site
- East Anglia ONE North Offshore Cable Corridor



Rev	Date	By	Comment
1	22/11/2018	AB	First Issue.

Prepared:	AB
Checked:	PM
Approved:	PP

1:250,000
Scale @ A3

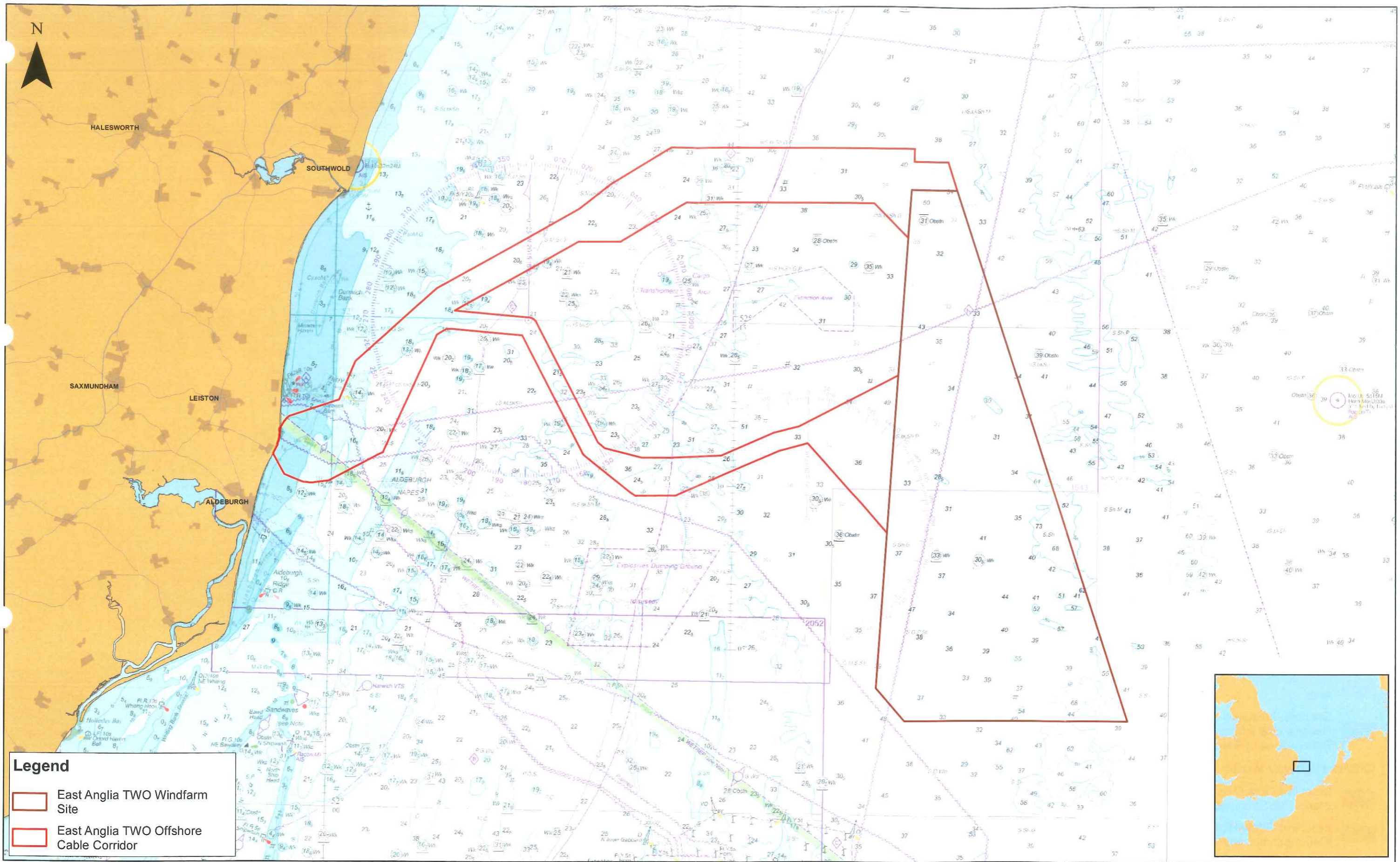
0 3.75 7.5 15 Km

Source: © The Crown Estate, 2016. Chms from MarineFND.co.uk © Licence No ER001-0645-MP0095 Not to be used for navigation.
This map has been produced to the latest known information at the time of issue, and has been produced for your information only.
Please consult with the SPR Offshore GIS team to ensure the content is still current before using the information contained on this map.
To the fullest extent permitted by law, we accept no responsibility or liability (whether in contract, tort (including negligence) or otherwise in respect of any errors or omissions in the information contained in the map and shall not be liable for any loss, damage or expense caused by such errors or omissions.

East Anglia ONE North

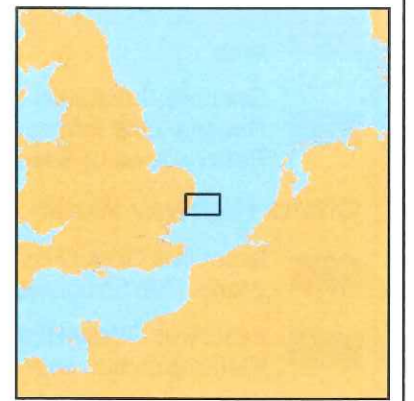
East Anglia ONE North Offshore Development Area

Drg No	EA1N-DEV-DRG-IBR-000397	Datum: WGS 1984 Projection: Zone 31N
Rev	1	
Date	22/11/18	
Figure	6.1	



Legend

- East Anglia TWO Windfarm Site
- East Anglia TWO Offshore Cable Corridor



Rev	Date	By	Comment	Approved:
2	15/11/2018	AB	First Issue.	Prepared: AB
1	19/04/2018	AB	First Issue.	Checked: BK
				Approved: PP

1:200,000
Scale @ A3

0 2.5 5 10 Km

Source: © The Crown Estate, 2018. Charts from MarineFIND.co.uk. © Licence No EK001-0645-MF0095. Not to be used for navigation. This map has been produced to the latest known information at the time of issue, and has been produced for your information only. Please consult with the SPR Offshore GIS team to ensure the content is still current before using the information contained on this map. To the fullest extent permitted by law, we accept no responsibility or liability (whether in contract, tort (including negligence) or otherwise) in respect of any errors or omissions in the information contained in the map and shall not be liable for any loss, damage or expense caused by such errors or omissions.

East Anglia TWO
East Anglia TWO Offshore Development Area

Drg No	EA1N-EA2-DEV-DRG-IBR-00TBC20
Rev	2
Date	15/11/18
Figure	6.1
Datum: WGS 1984	
Projection: Zone 31N	