

Item: 5

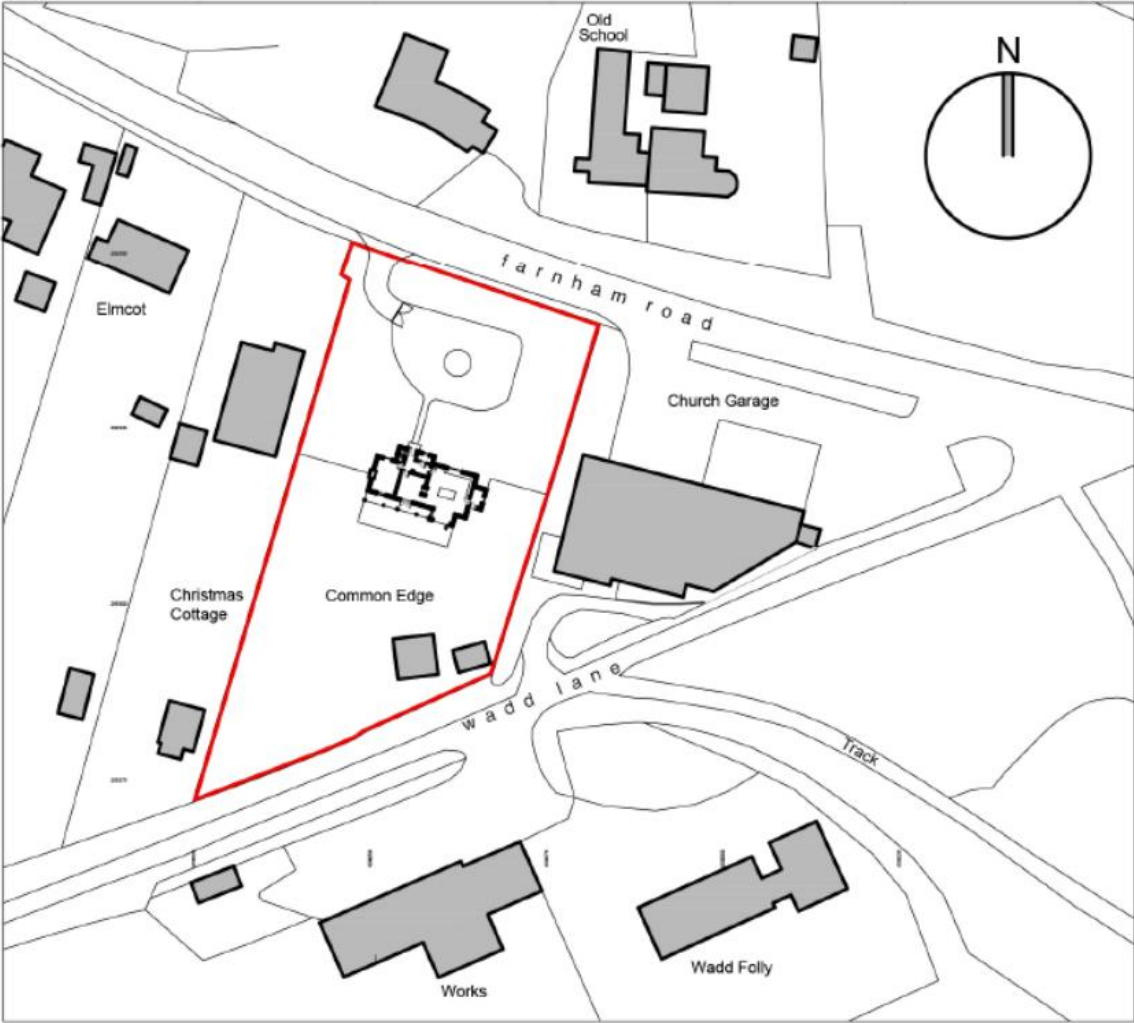
DC/21/1200/FUL

The proposal is for a 1 and a half storey 3 bay cart lodge with tourist accommodation at first floor level. Ground floor includes two parking bays and one storage bay. First floor comprise, WC, Dining/Kitchen/Living room, bedroom and en-suite.

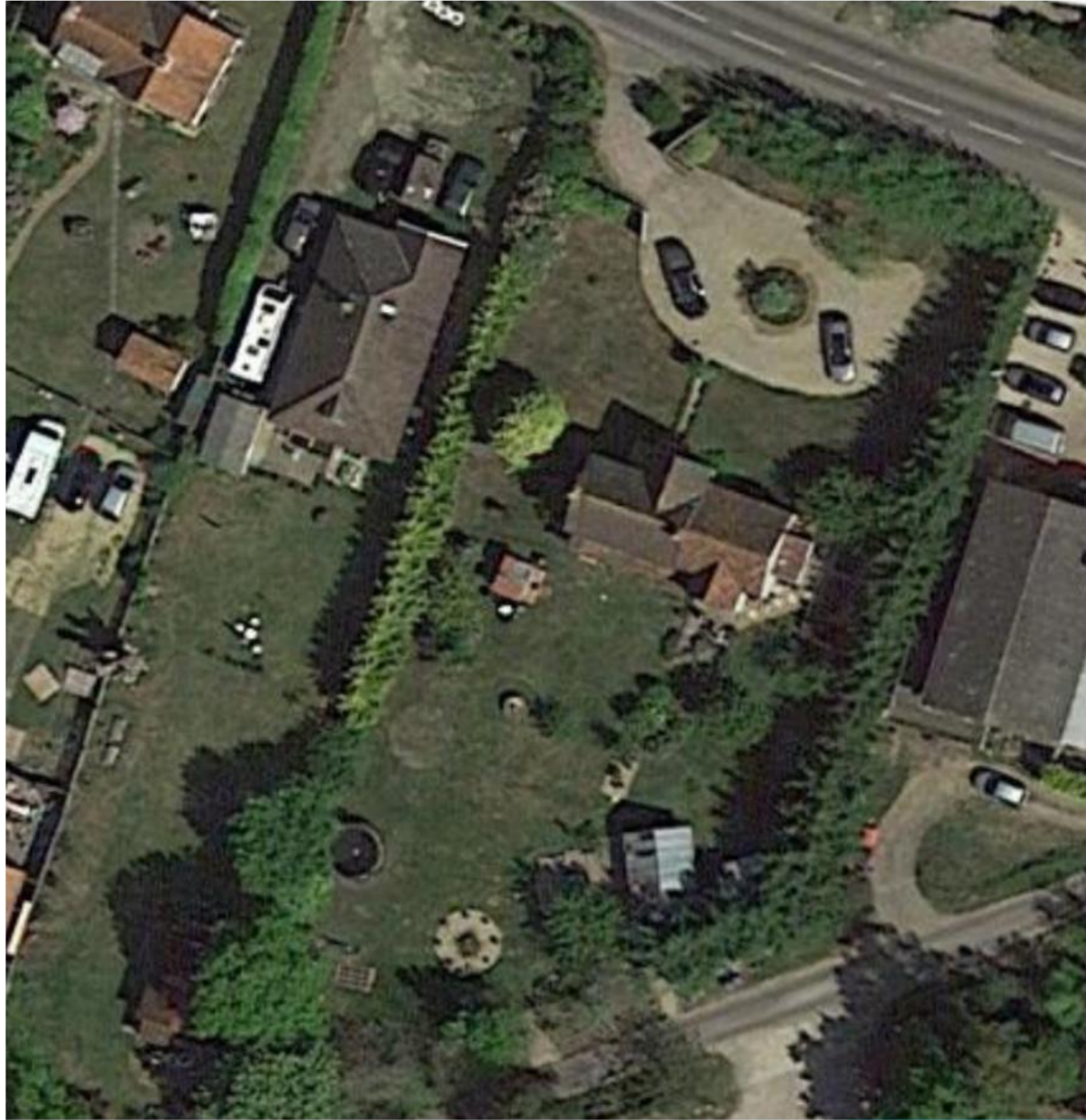
Common Edge, Farnham Road, Snape, IP17 1QW



Site Location Plan



Aerial Photo



Proposed Block Plan



[Link to Recommendation](#)

Photographs



Photographs



Photographs



Photographs



Photographs



Photographs



Photographs



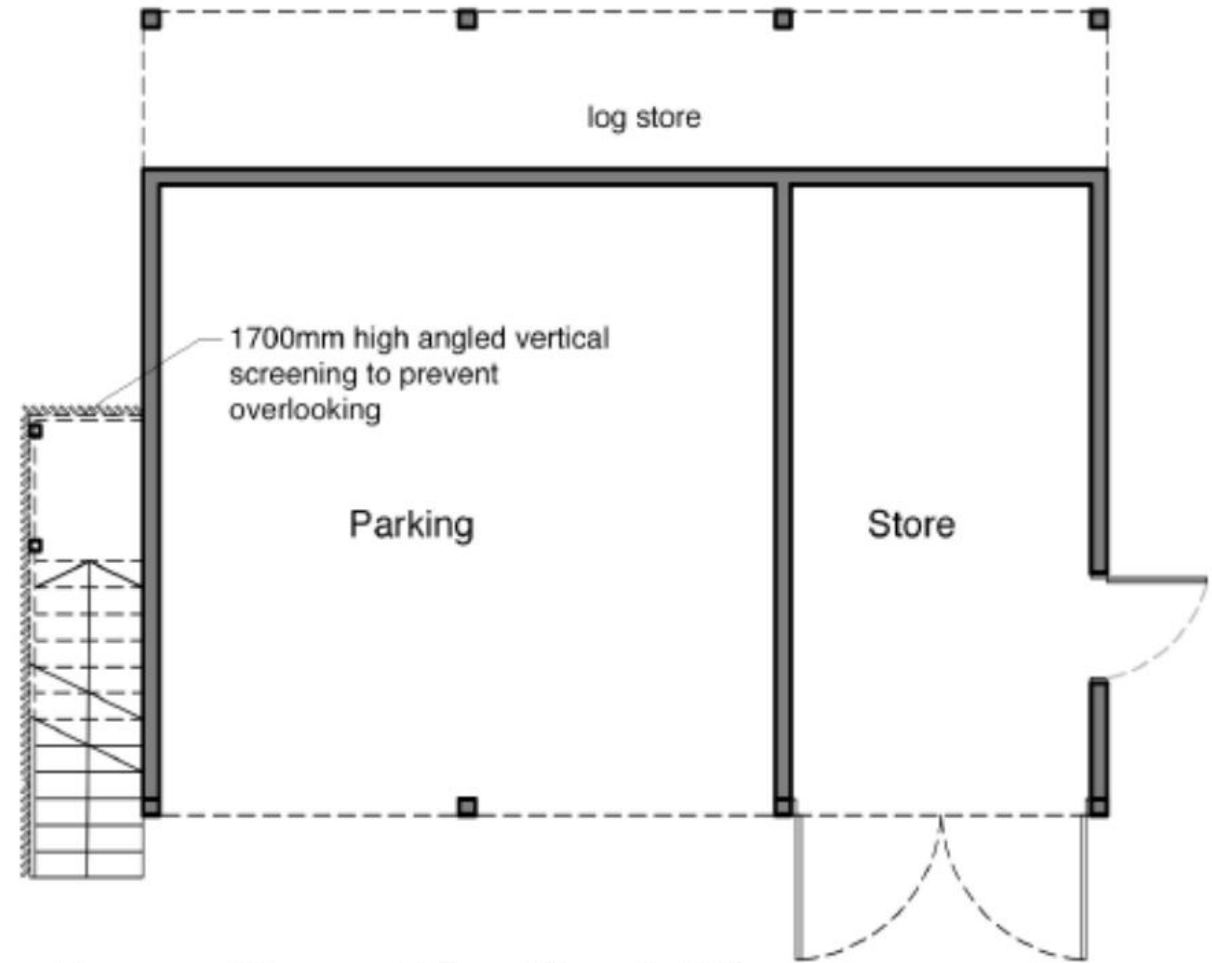
Photographs



Proposed Floor Plans



Proposed First Floor Plan 1:100



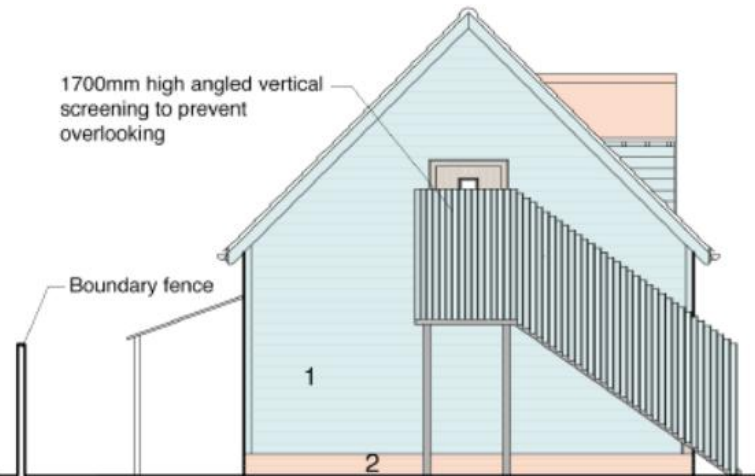
Proposed Ground Floor Plan 1:100

Proposed Elevations

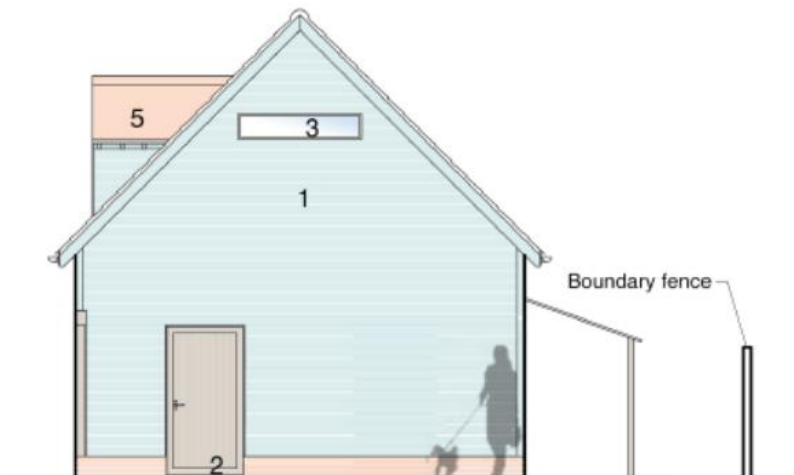
this drawing is not to be scaled
Screen added to staircase to prevent overlooking
following comments from planning committee
14-06-21



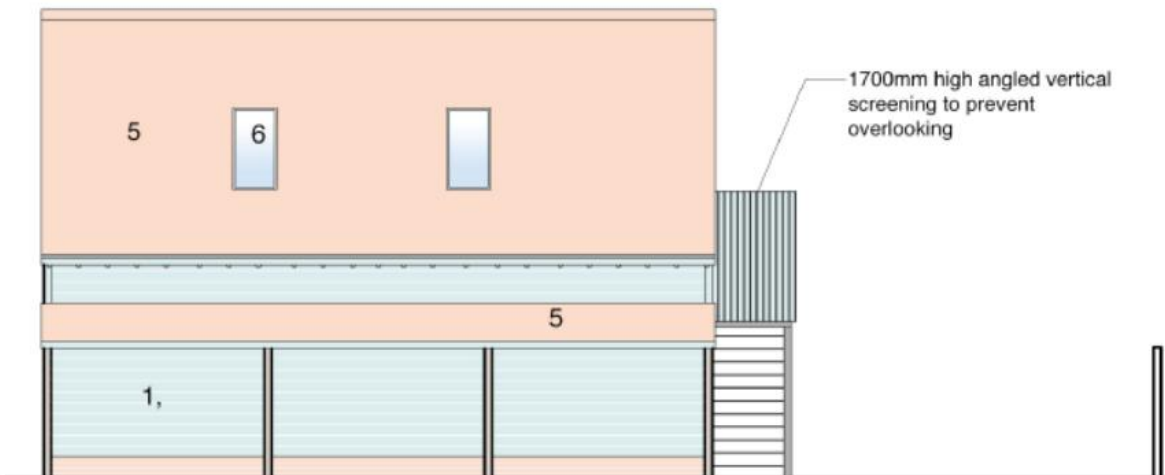
West Elevation 1:100



North Elevation 1:100

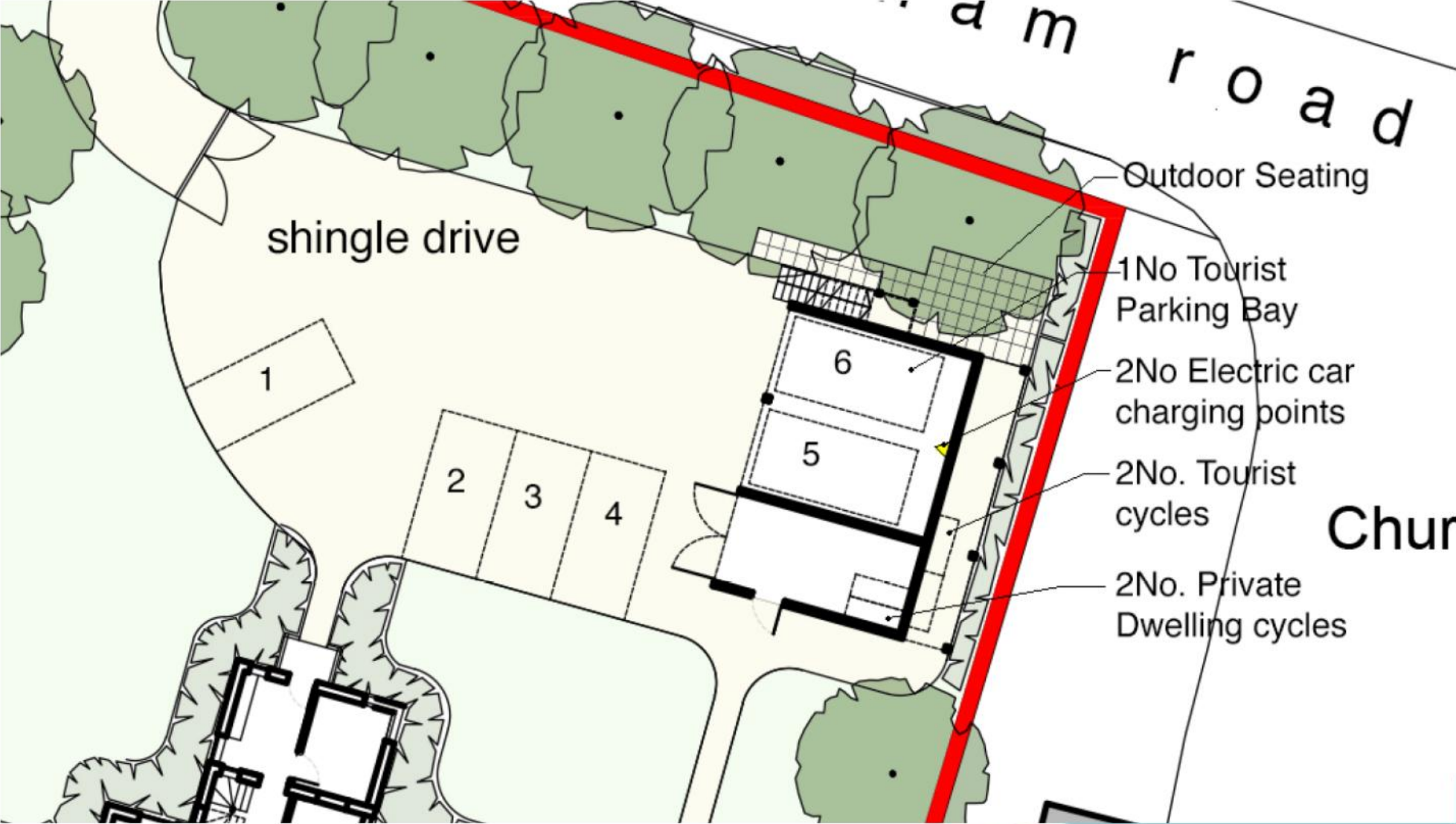


South Elevation 1:100



East Elevation 1:100

Proposed Block Plan




Material Planning Considerations and Key Issues

- **Overlooking/Loss to Privacy**
 - **Noise**
 - **Over Development**
 - **Highway Concerns**
 - **Visual Impact to Street Scene and Character of Area**
- 
- A teal-colored decorative shape, resembling a stylized hill or a wave, is positioned in the bottom right corner of the slide.

Recommendatio

n

Authority to Determine with APPROVAL being recommended the following controlling conditions.

- Time limit
 - Compliance with approved plans
 - Compliance with Materials
 - Retention of ownership with the host dwelling and 56 day tourist occupation period
 - Highways standard conditions
 - Assessment of Contaminants and Remediation of site if necessary
 - Retention of Staircase Privacy Screen
- 
- A large, light teal decorative shape that starts as a thin wedge at the bottom left and expands diagonally towards the bottom right corner of the slide.



