

Item: 13

DC/20/4436/ADI

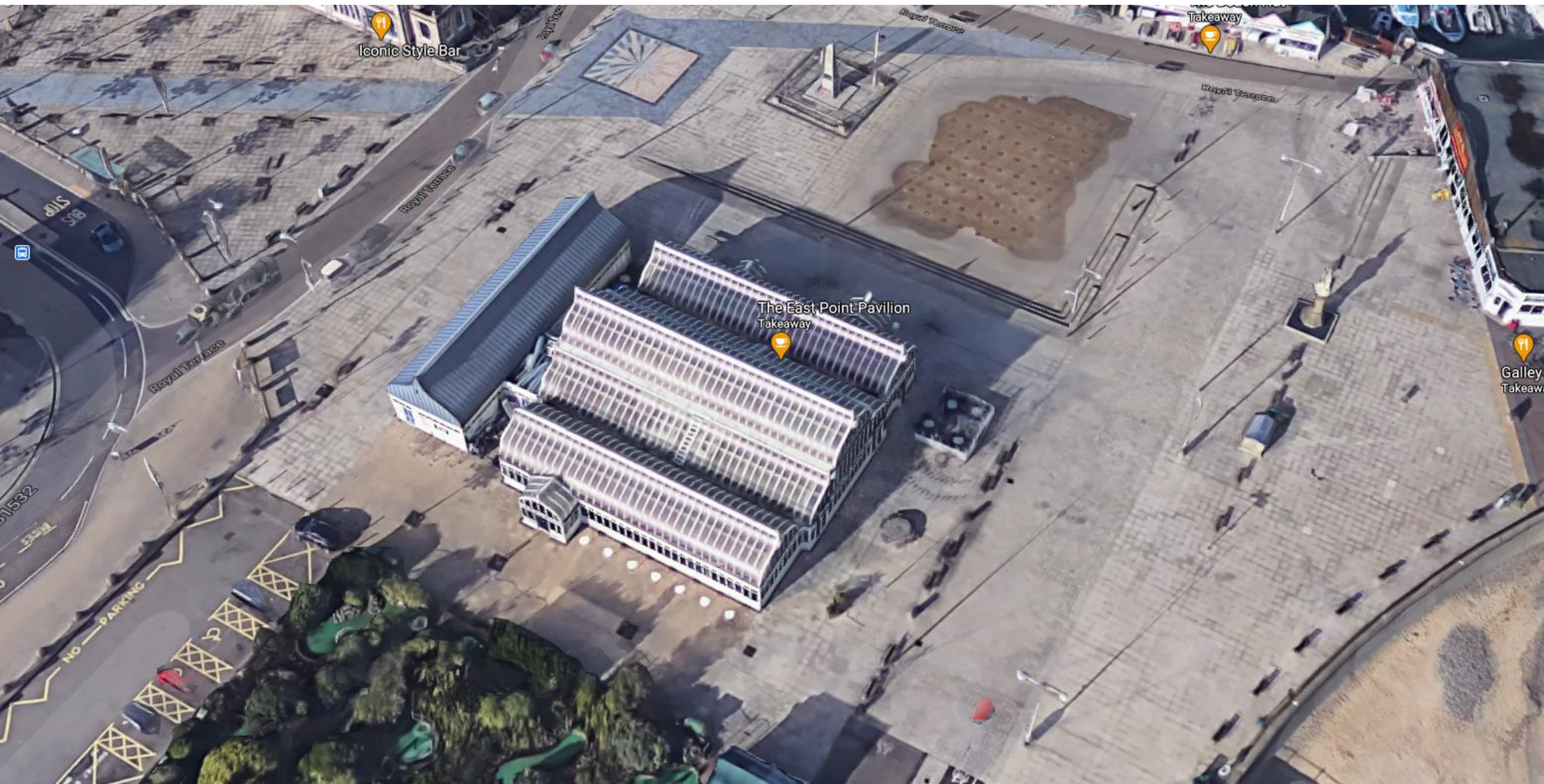
Illuminated Advertisement Consent - New signage to be a combination of illuminated and nonilluminated fascia panels and vinyl wrap / new cladding

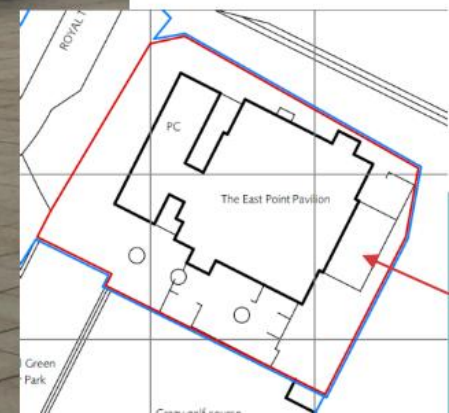
East Point Pavilion, Royal Plain, Lowestoft, Suffolk



Site Location Plan





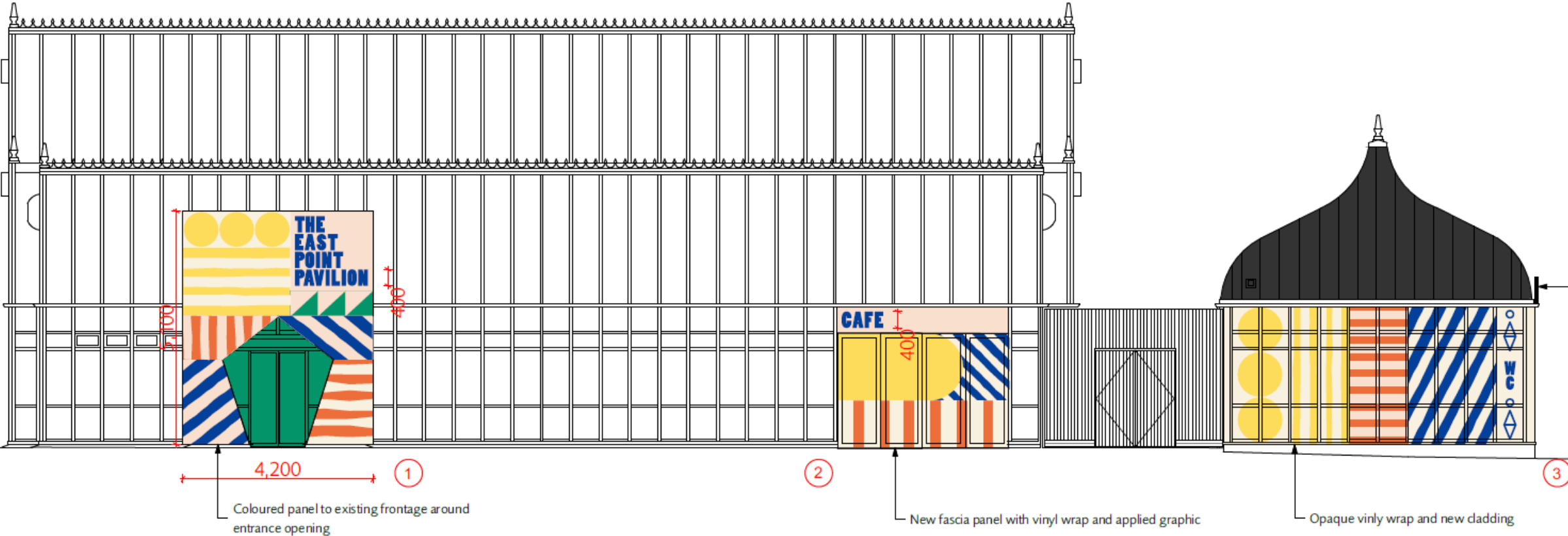






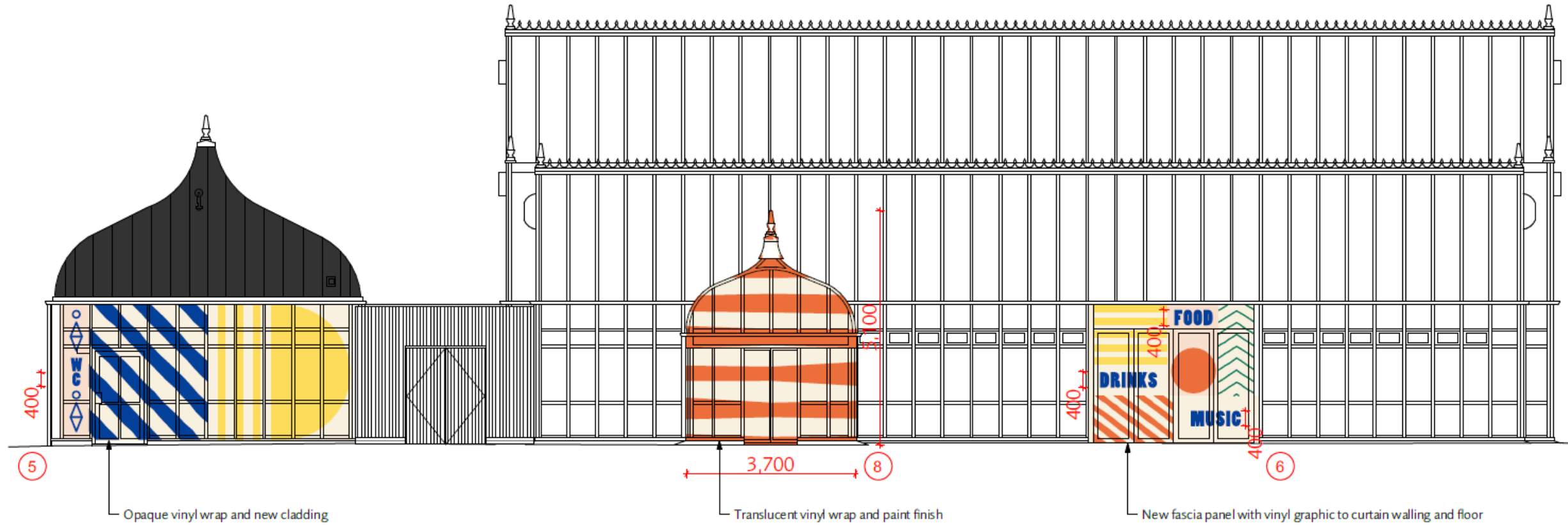


Proposed Elevations – North

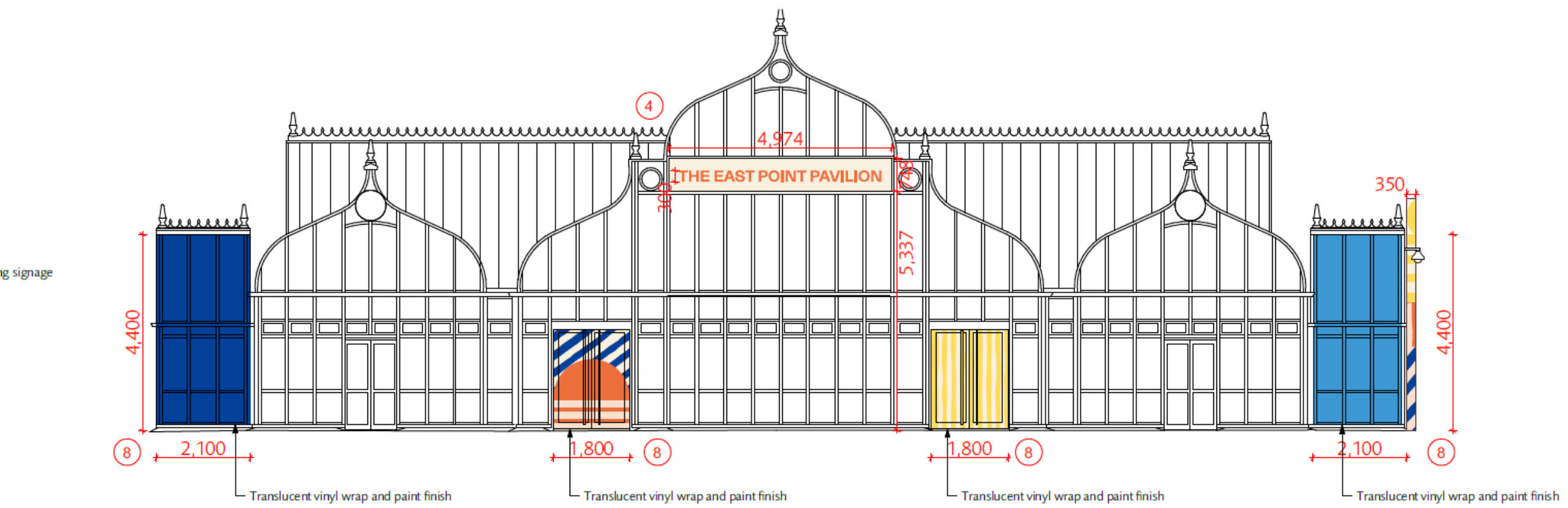


01 North Graphic Elevation
1:100

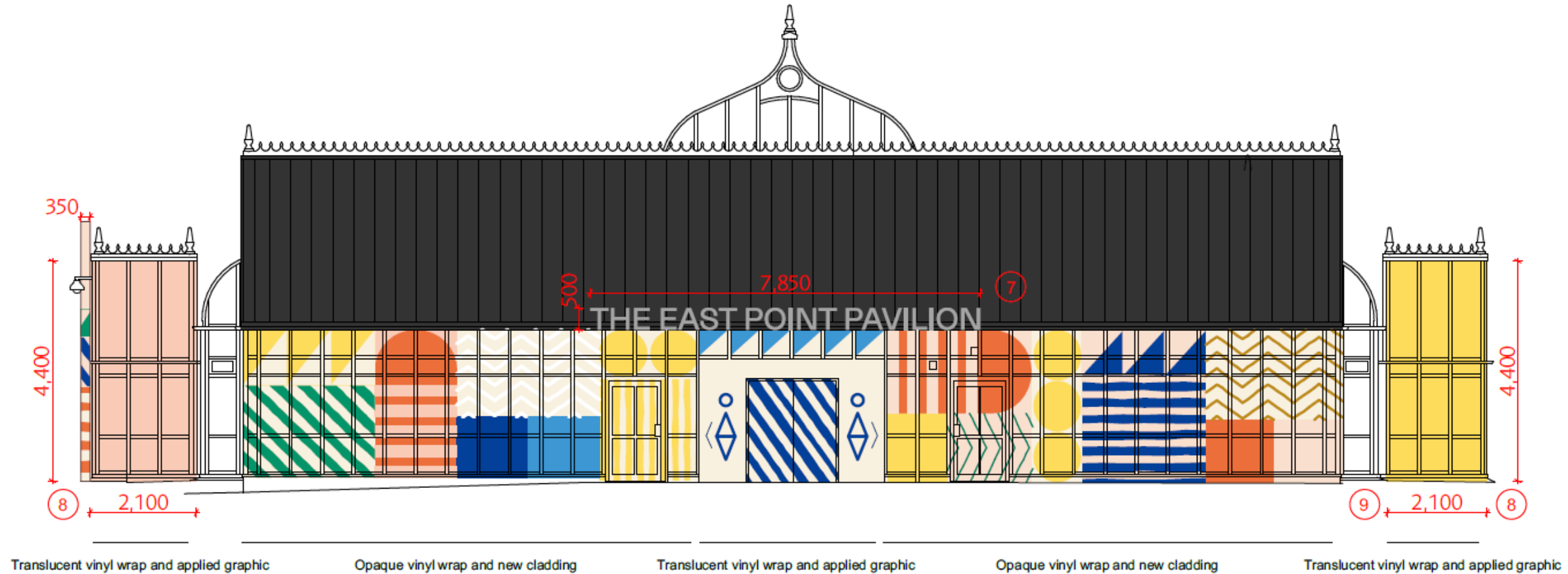
Proposed Elevations – South




Proposed Elevations – East



Proposed Elevations – West



Material Planning Considerations and Key Issues

- Character, appearance, and Conservation Area
 - Amenity
 - Highway Safety
- 
- A large, solid teal shape that starts as a thin wedge at the bottom left and expands diagonally upwards to the right, filling the bottom right corner of the slide.

Recommendation

Approve subject to the following summarised conditions

- Ensure adverts are tidy and clean
- Adverts maintained in a safe conditions
- Removed to a reasonable satisfaction of the Local Planning Authority
- Approved drawings



Objector/ Supporter/ Interested Party







