

Item: 13

DC/20/2772/FUL

Proposed erection of two detached houses with associated parking and landscaping

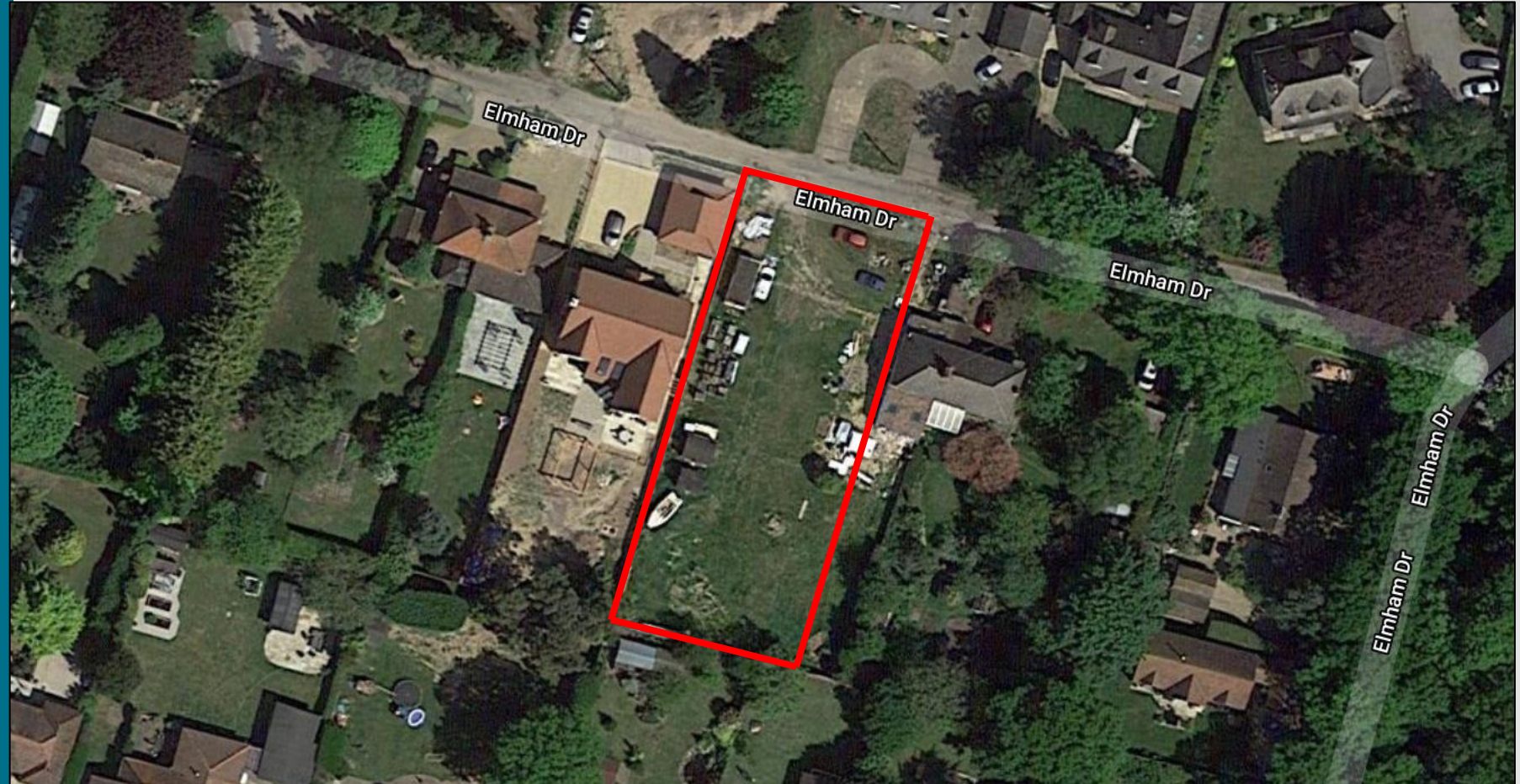
Land adjacent Peeler, Elmham Drive, Foxhall, Ipswich



Site Location Plan



Aerial View



Photos (1 of 2)

1



2



Photos (2 of 2)

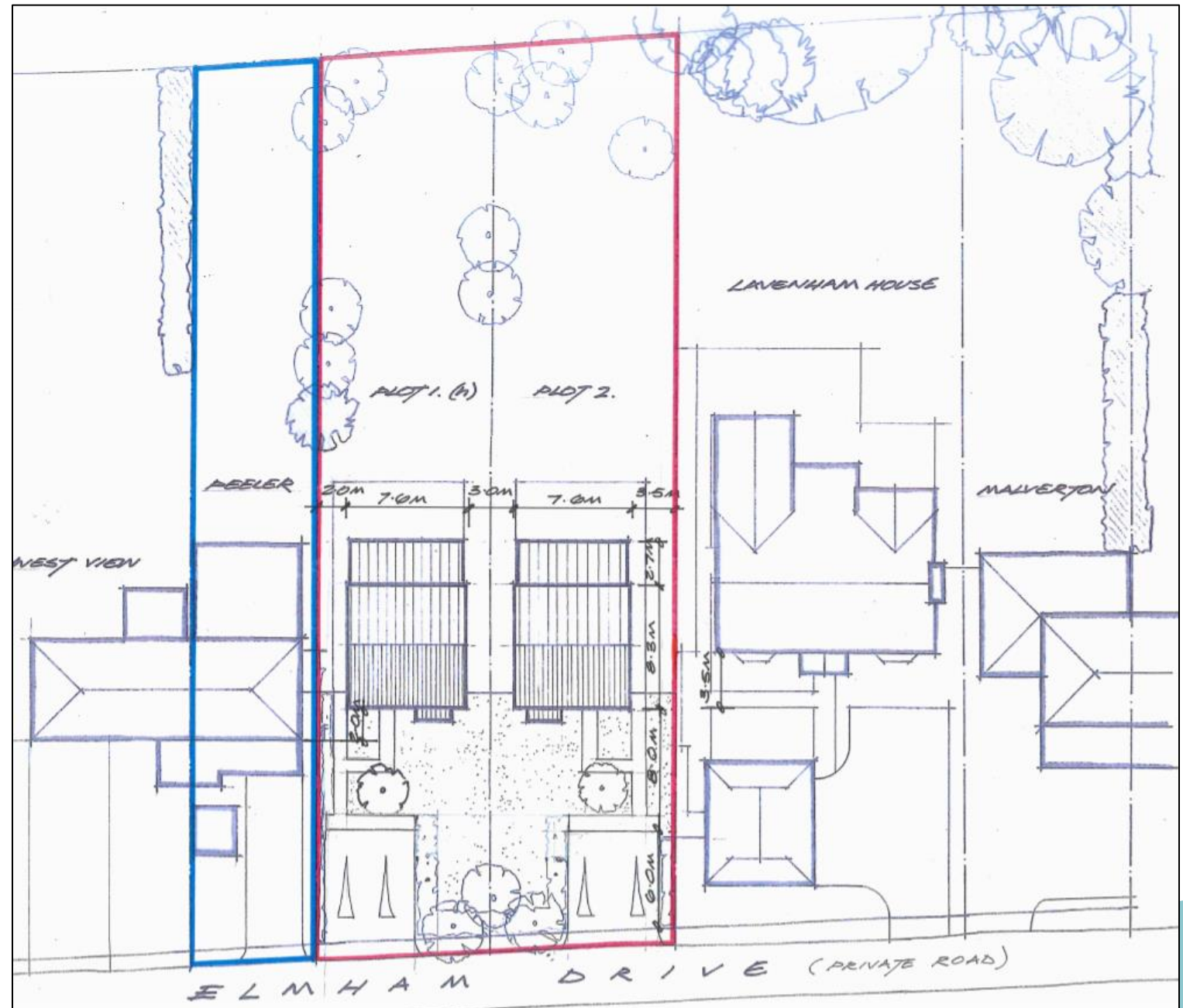
1



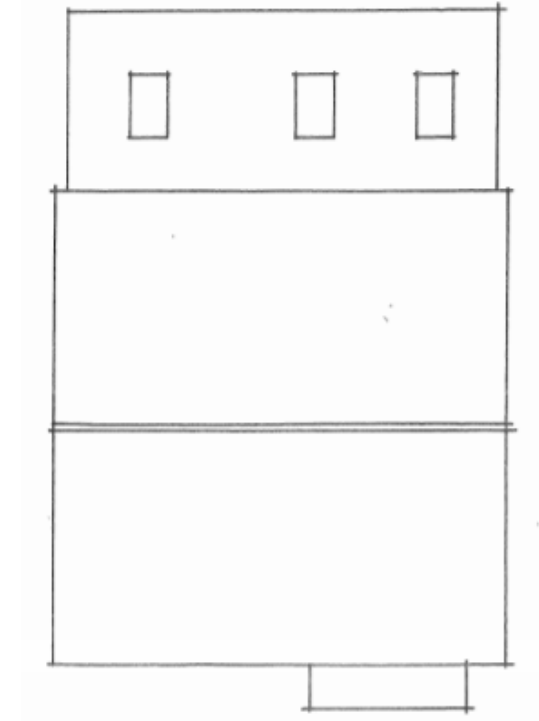
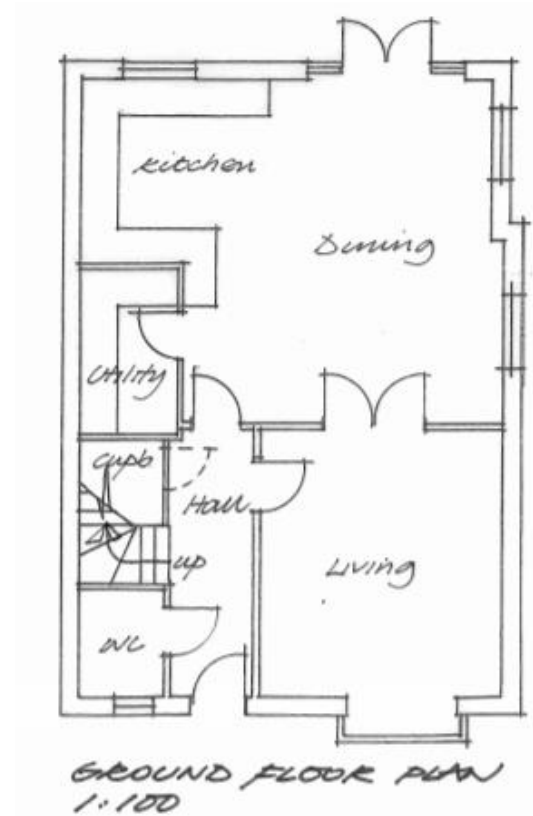
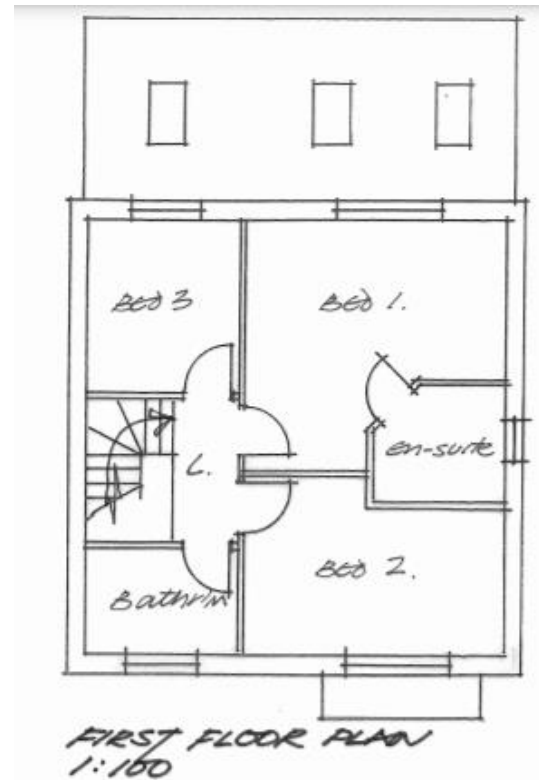
2



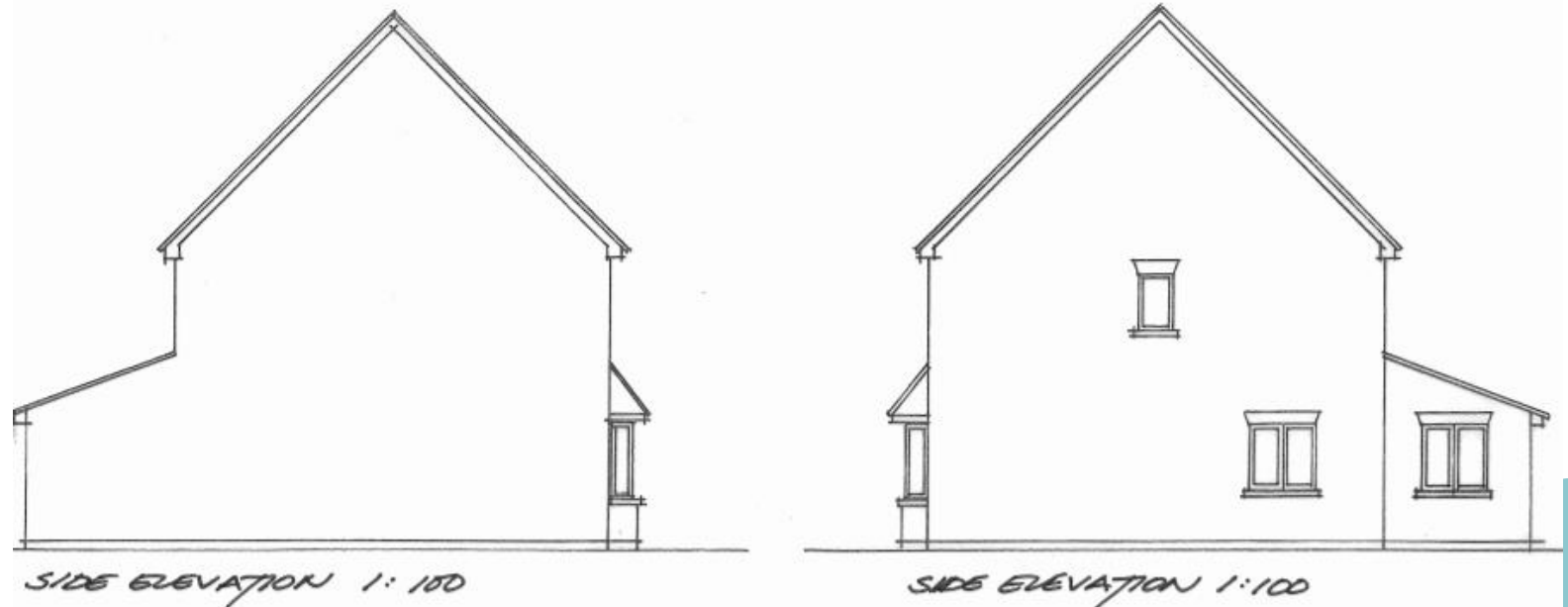
Proposed Block Plan



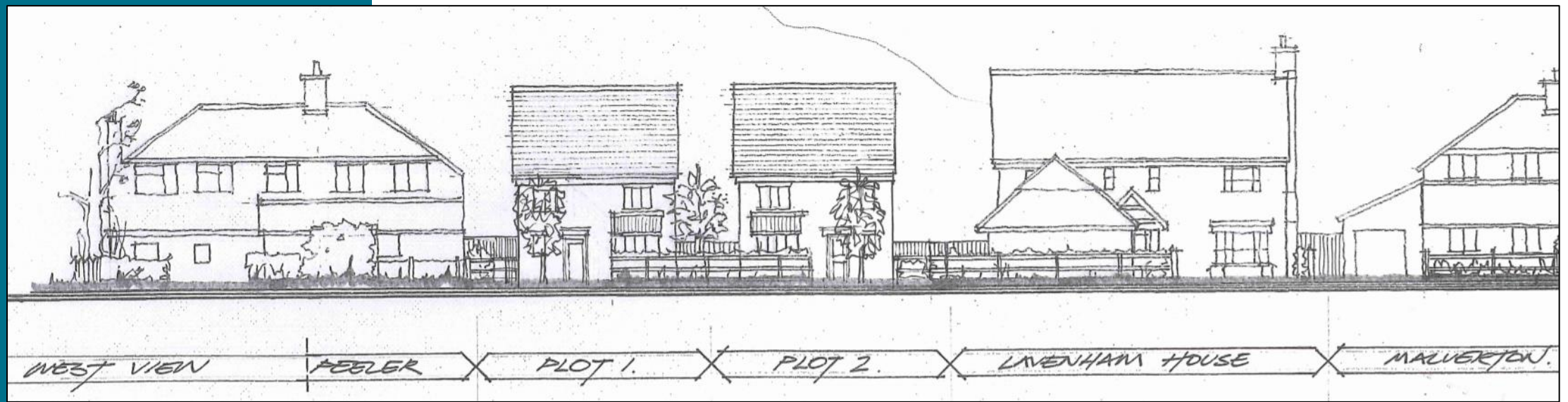
Proposed Floor Plans




Proposed Elevations



Proposed Street Scene




Main Considerations

- Impact on character of street scene;
 - Provision of two new smaller detached dwellings;
 - Efficient use of land on a large plot.
- 
- A teal-colored decorative shape, resembling a stylized hill or a wave, is positioned at the bottom right of the slide.

Recommendation

Approve planning permission subject to the conditions summarised below:

- 1) Standard three year time limit for implementation;
 - 2) Approved Plans/Drawings;
 - 3) Materials as submitted;
 - 4) Discovery of unexpected contamination;
 - 5) Details of refuse bin presentation areas to be submitted;
 - 6) Provision of vehicle parking and manoeuvring prior to first use;
 - 7) Submission of landscaping work details prior to commencement.
- 
- A teal-colored decorative shape, resembling a stylized hill or a large arrow pointing right, is located in the bottom right corner of the slide.