

Item: 9

DC/20/2905/FUL

This application covers a new pumping station, kiosk and telemetry mast. The application links to DC/19/0210/FUL. The kiosk is 2m and sits on a plinth 0.8m above EGL. The mast is 6m high.

Land Behind, Velda Close, Lowestoft, Suffolk



Site Location Plan



Satellite Image



Photographs



Photographs



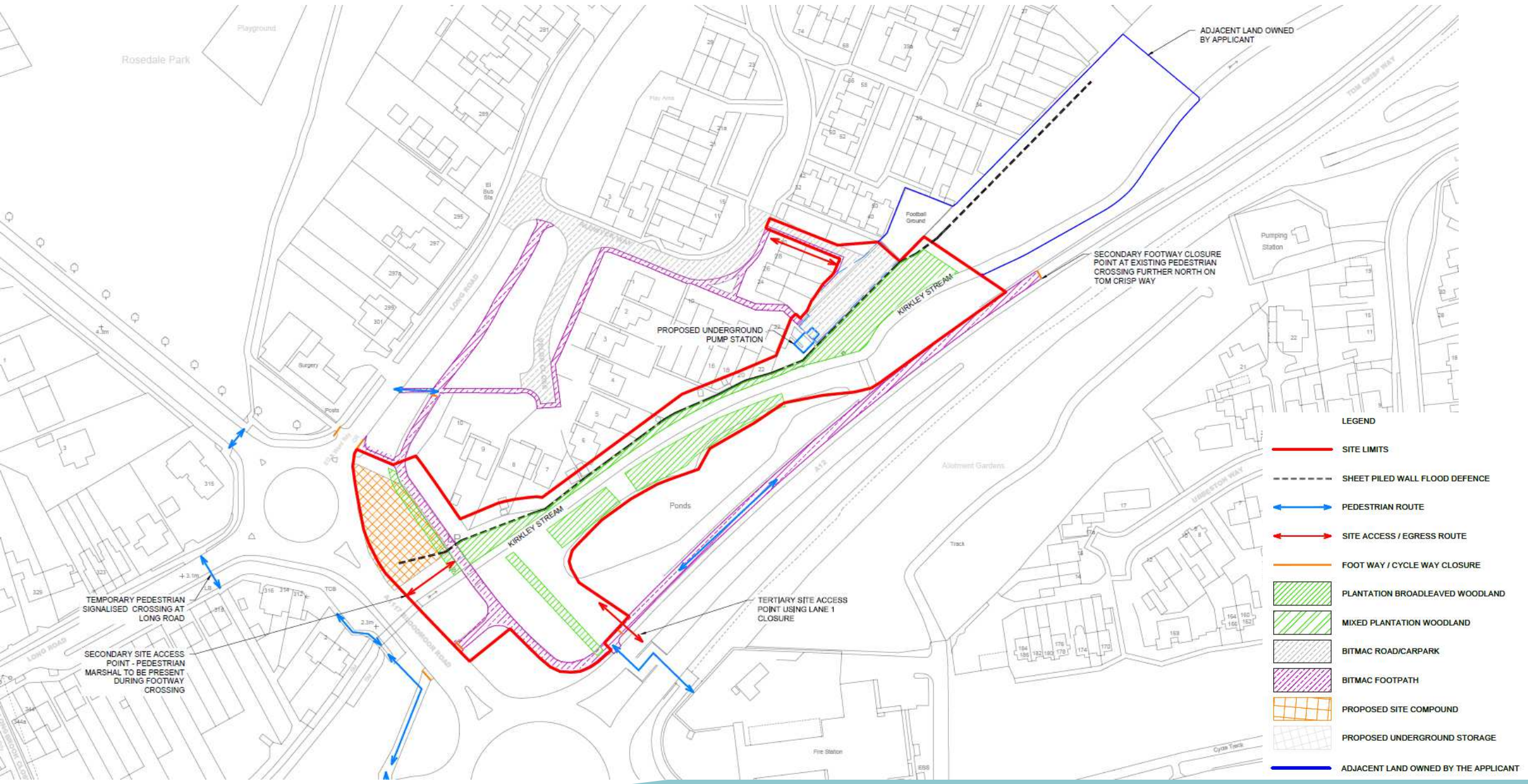
Photographs



Photographs



Block Plan



LEGEND

- SITE LIMITS
- SHEET PILED WALL FLOOD DEFENCE
- ↔ PEDESTRIAN ROUTE
- ↔ SITE ACCESS / EGRESS ROUTE
- FOOT WAY / CYCLE WAY CLOSURE
- PLANTATION BROADLEAVED WOODLAND
- MIXED PLANTATION WOODLAND
- BITMAC ROAD/CARPAK
- BITMAC FOOTPATH
- PROPOSED SITE COMPOUND
- PROPOSED UNDERGROUND STORAGE
- ADJACENT LAND OWNED BY THE APPLICANT

TEMPORARY PEDESTRIAN
SIGNALISED CROSSING AT
LONG ROAD

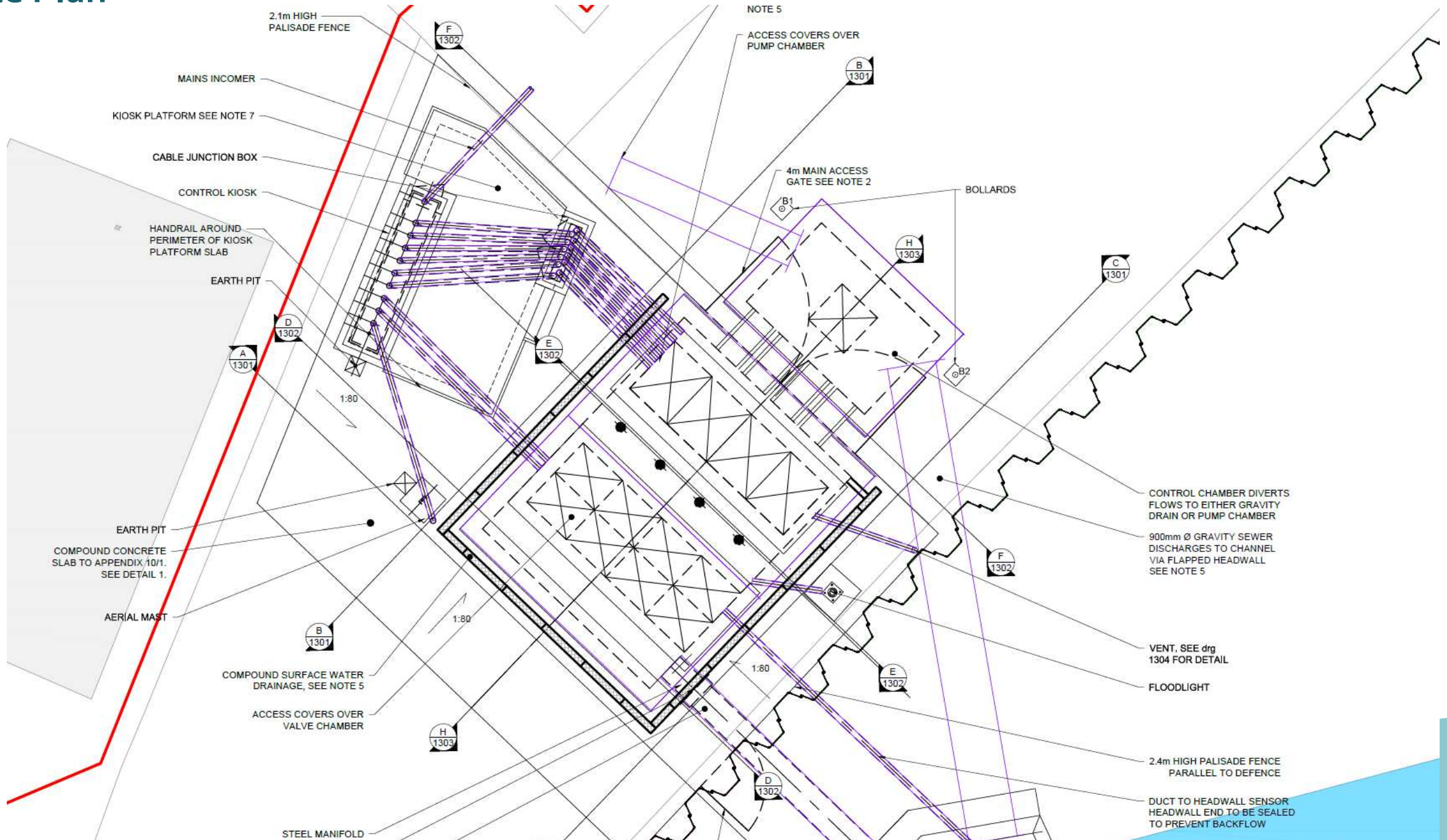
SECONDARY SITE ACCESS
POINT - PEDESTRIAN
MARSHAL TO BE PRESENT
DURING FOOTWAY
CROSSING

PROPOSED UNDERGROUND
PUMP STATION

SECONDARY FOOTWAY CLOSURE
POINT AT EXISTING PEDESTRIAN
CROSSING FURTHER NORTH ON
TOM CRISP WAY

TERTIARY SITE ACCESS
POINT USING LANE 1
CLOSURE

Site Plan



MAINS INCOMER

KIOSK PLATFORM SEE NOTE 7

CABLE JUNCTION BOX

CONTROL KIOSK

HANDRAIL AROUND PERIMETER OF KIOSK PLATFORM SLAB

EARTH PIT

EARTH PIT

COMPOUND CONCRETE SLAB TO APPENDIX 10/1. SEE DETAIL 1.

AERIAL MAST

STEEL MANIFOLD

COMPOUND SURFACE WATER DRAINAGE, SEE NOTE 5

ACCESS COVERS OVER VALVE CHAMBER

NOTE 5

ACCESS COVERS OVER PUMP CHAMBER

4m MAIN ACCESS GATE SEE NOTE 2

BOLLARDS

CONTROL CHAMBER DIVERTS FLOWS TO EITHER GRAVITY DRAIN OR PUMP CHAMBER

900mm Ø GRAVITY SEWER DISCHARGES TO CHANNEL VIA FLAPPED HEADWALL SEE NOTE 5

VENT, SEE DRG 1304 FOR DETAIL

FLOODLIGHT

2.4m HIGH PALISADE FENCE PARALLEL TO DEFENCE

DUCT TO HEADWALL SENSOR HEADWALL END TO BE SEALED TO PREVENT BACKFLOW

1:80

1:80

1:80

A 1301

D 1302

F 1302

E 1302

B 1301

H 1303

C 1301

F 1302

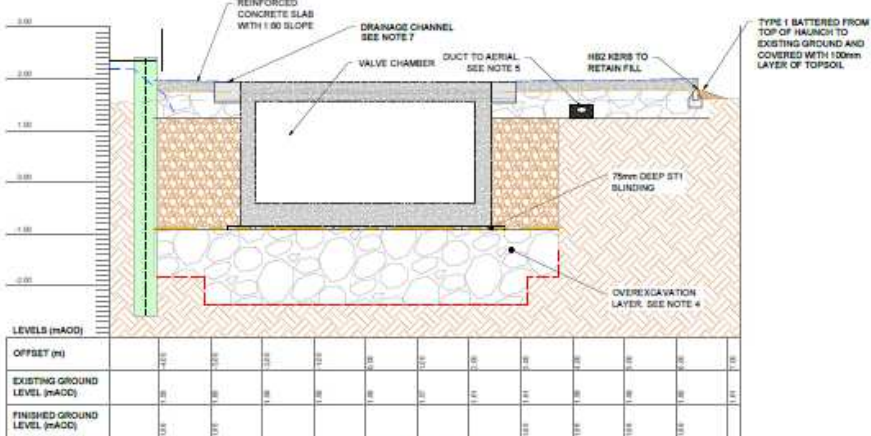
B 1301

E 1302

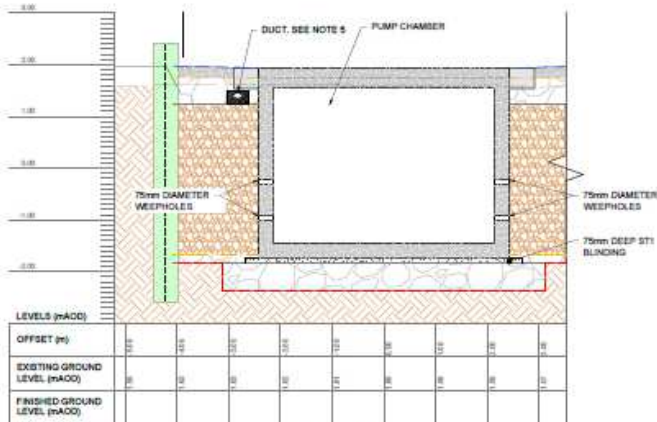
H 1303

D 1302

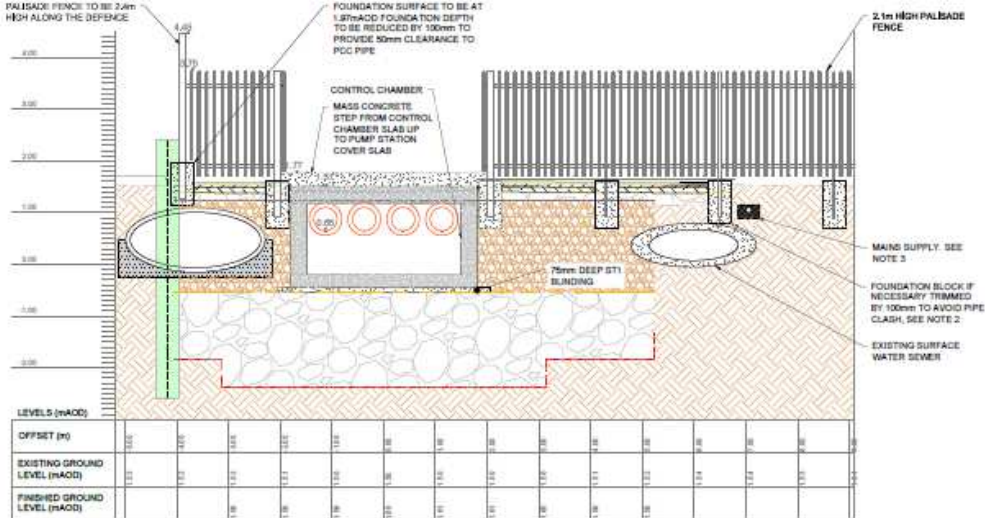
Proposed Cross- Sections



SECTION D-D

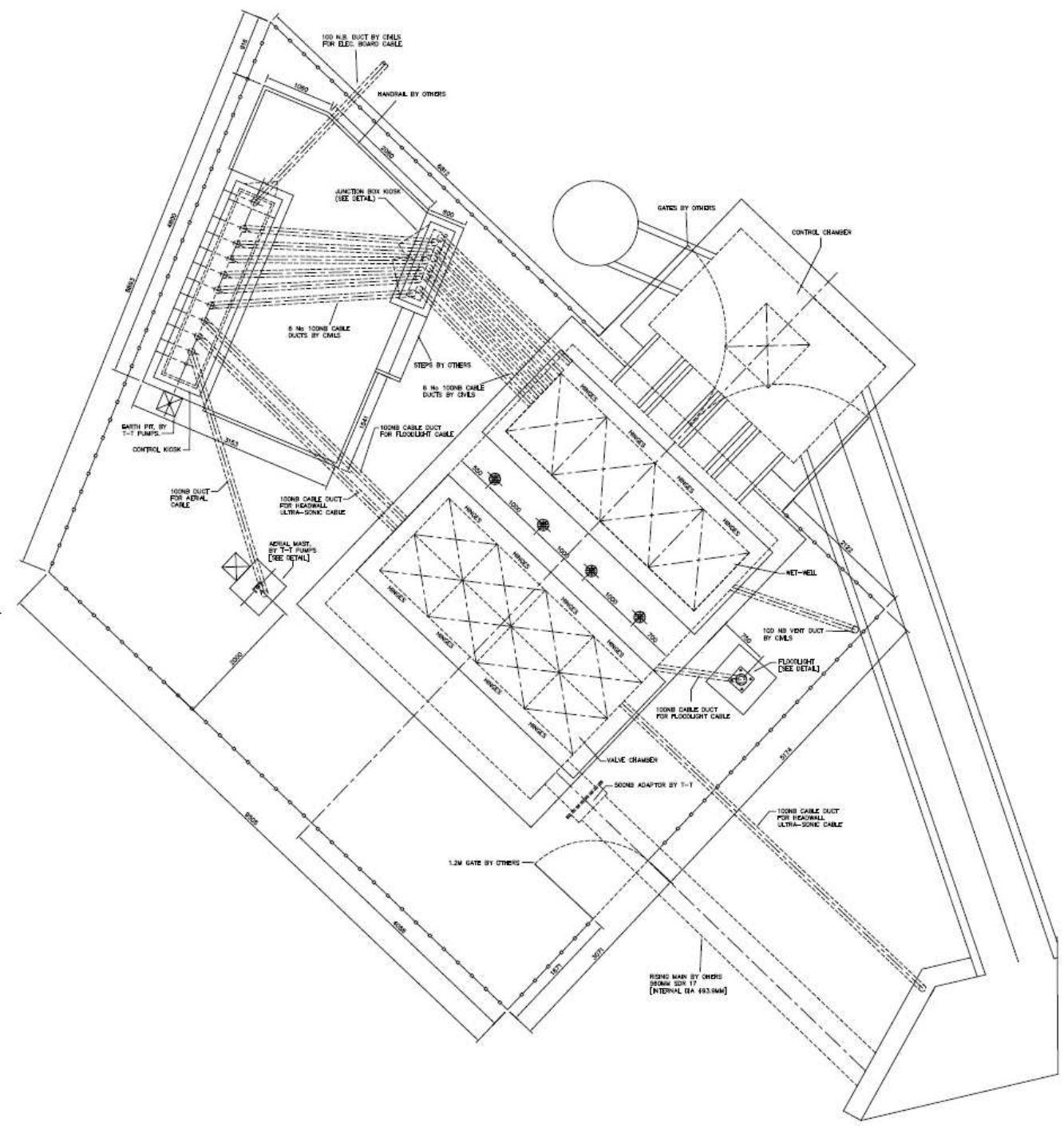


SECTION E-E

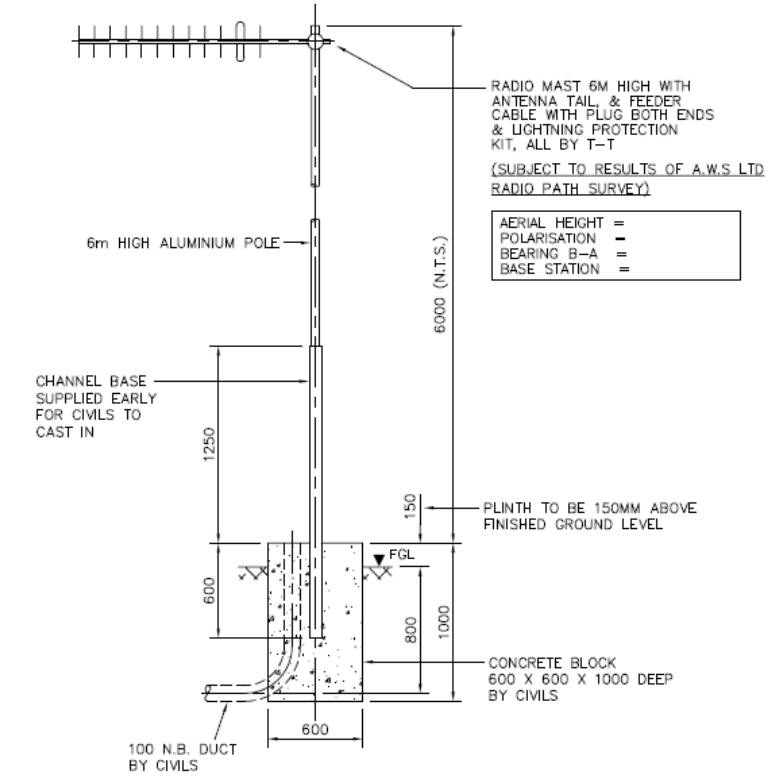
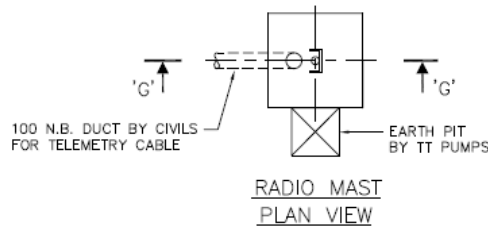


SECTION F-F

Site Plan



Proposed Elevations



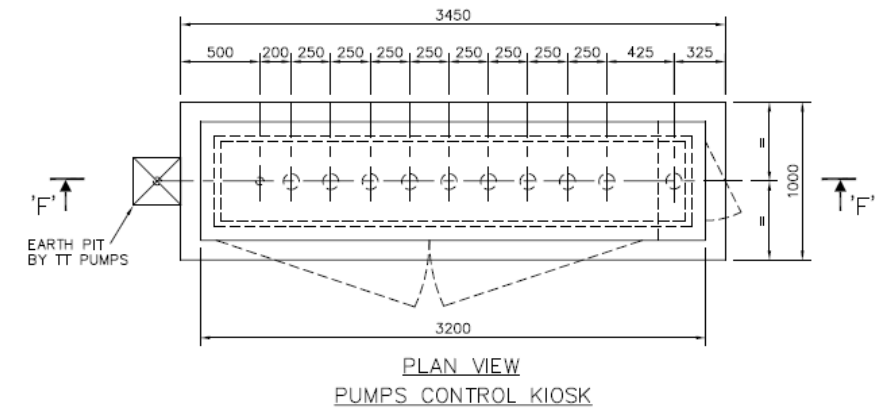
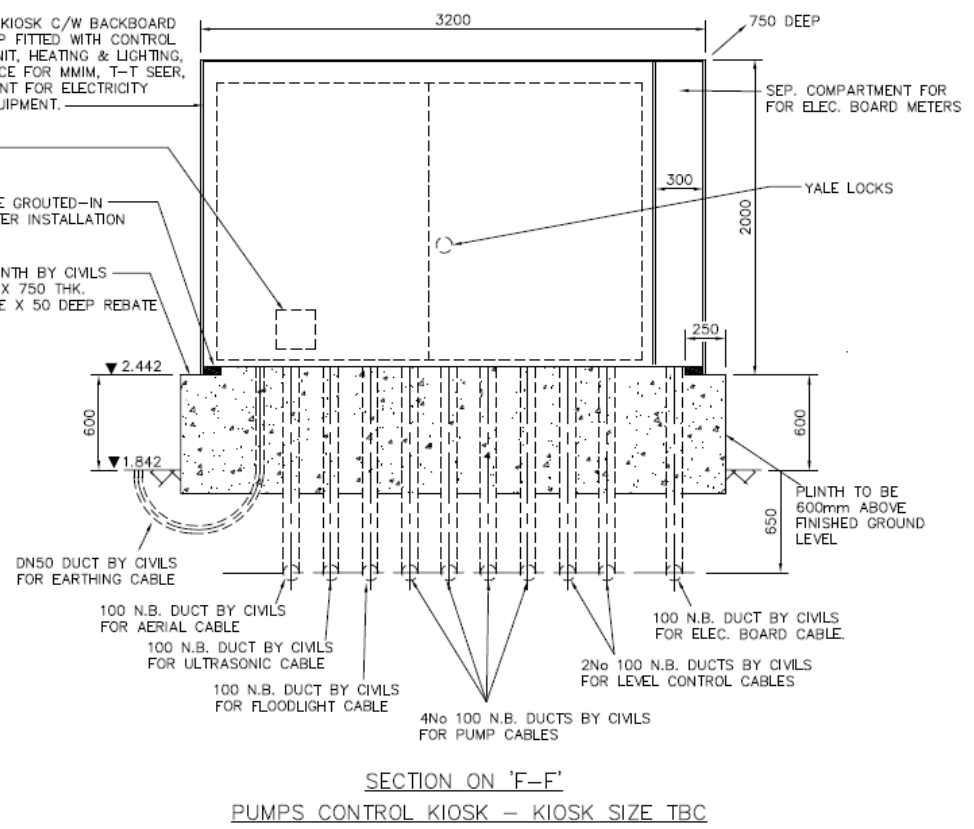
AERIAL HEIGHT =
POLARISATION =
BEARING B-A =
BASE STATION =

G.R.P. WEATHERPROOF KIOSK C/W BACKBOARD
3200 x 2000 x 750 DP FITTED WITH CONTROL
PANEL, ULTRASONIC UNIT, HEATING & LIGHTING,
ALL BY T-T WITH SPACE FOR MMIM, T-T SEER,
SEPARATE COMPARTMENT FOR ELECTRICITY
BOARD'S METERING EQUIPMENT.

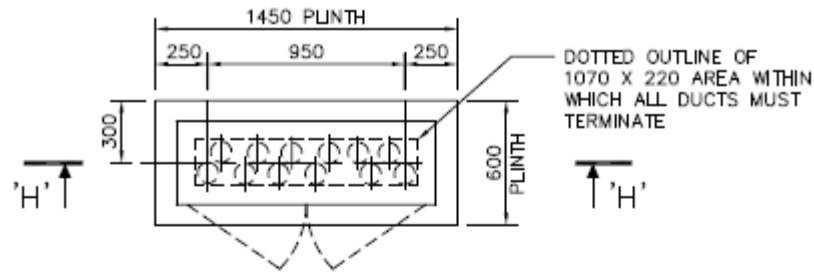
GEN. INLET
CAT-FLAP.

REBATE TO BE GROUTED-IN
BY CIVILS AFTER INSTALLATION
OF KIOSK.

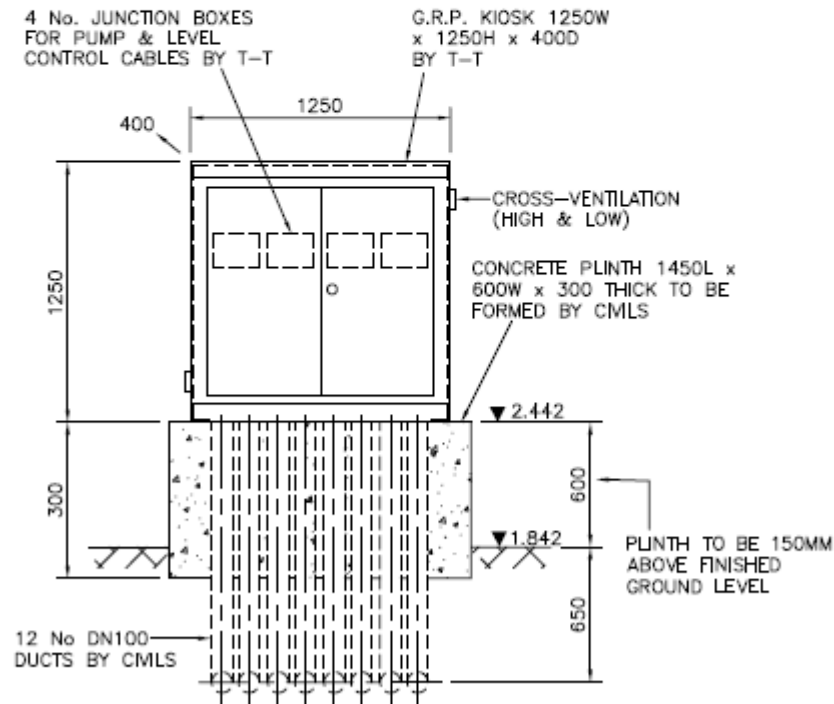
CONCRETE PLINTH BY CIVILS
3450 x 1000 x 750 THK.
WITH 250 WIDE X 50 DEEP REBATE



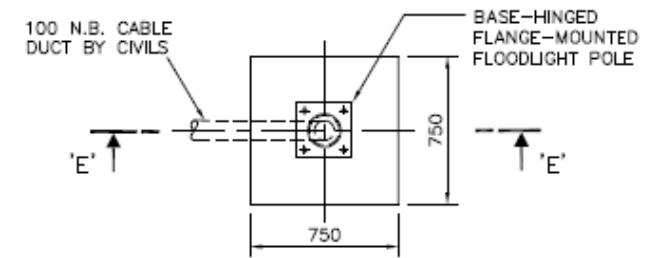
Proposed Elevations



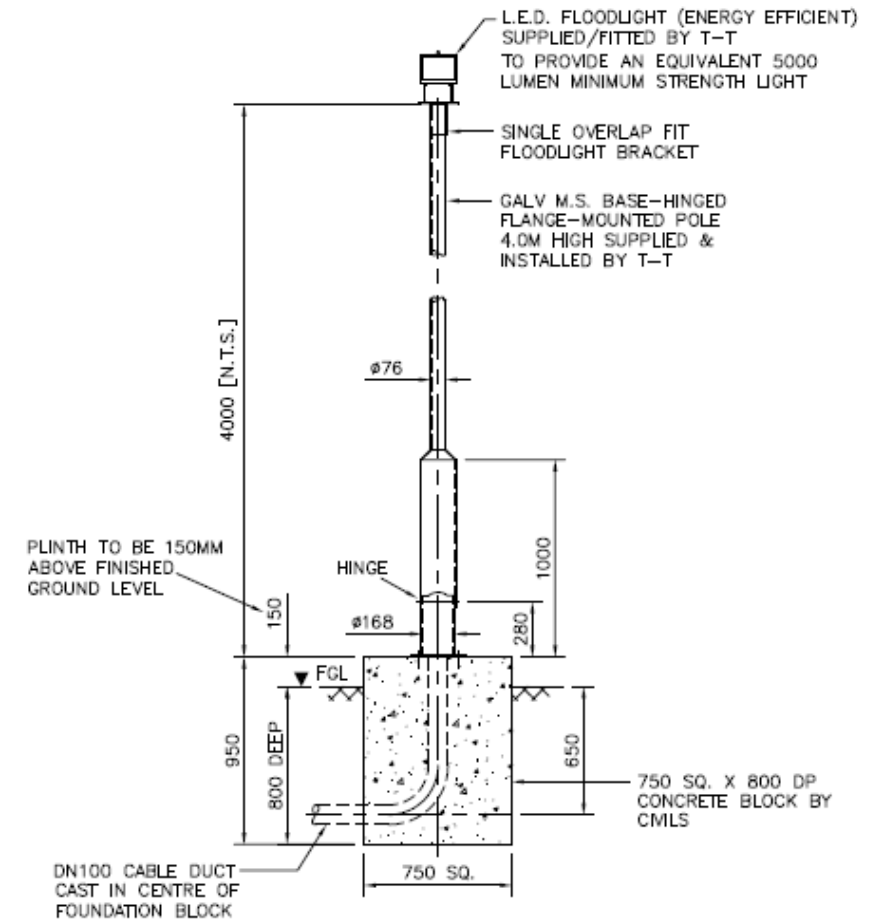
JUNCTION BOX KIOSK - PLAN VIEW



JUNCTION BOX KIOSK SECTION ON 'H-H'




HINGED FLOODLIGHT POLE PLAN VIEW



SECTION ON 'E-E' DETAIL OF FLOODLIGHT FIXING

Material Planning Considerations and Key Issues

- Principle of development
 - Character and appearance
 - Amenity
 - Flood Risk
- 

Recommendation

Approve subject to the following summarised conditions:

- Time Limit
- Approved Plans
- Floodlight limitations