

Community Partnership Board

East Suffolk Councillors:

Councillor Steve Gallant (Chairman)
Councillor Paul Ashdown
Councillor Chris Blundell
Councillor Jenny Ceresa
Councillor Judy Cloke
Councillor Tony Cooper
Councillor Mark Jepson
Councillor Chris Mapey
Councillor Carol Poulter
Councillor Letitia Smith

Partnership Organisations:

NHS Clinical Commissioning Groups
Suffolk County Council
Suffolk Police
Business Community
Voluntary, Community and Social Enterprise Sector
Youth Community
Greenprint Forum
Suffolk Association of Local Councils

East Suffolk House, Riduna Park, Station Road, Melton, Woodbridge, Suffolk, IP12 1RT
Monday, 16 March 2020 at 6.00 pm

Agenda

Pages

- | | | |
|----------|--|--------------|
| 1 | Introductions by Councillor Gallant, Leader of East Suffolk Council and Chairman of the Community Partnership Board | |
| 2 | Apologies for Absence | |
| 3 | Election of a Vice-Chairman of the Community Partnership Board | |
| 4 | Terms of Reference of the Community Partnership Board
Led by Councillor Gallant and Nick Khan | 1 - 3 |

5	Background to the Establishment of Community Partnerships Presentation by Councillor Gallant and Nick Khan	
6	What is the data telling us about East Suffolk Presentation from Nicole Rickard	4 - 23
7	What are the eight Community Partnerships saying Introduction from Nicole Rickard and then a two minute verbal update from each of the Community Partnership Chairmen	24 - 25
8	Focus on: Tackling Isolation and Loneliness Presentation of data from Nicole Rickard, followed by a discussion led by Councillor Gallant, to identify key issues and outcomes for more detailed consideration by the Board either; i) Immediately (by end of the 2019/20 Financial Year; ii) To inform a work programme going forwards	26 - 30
9	Focus on: Transport and access to services Presentation of key data and insight, followed by a discussion led by Councillor Gallant, to build on the information presented	31 - 33
10	Future Meeting Arrangements	
11	Final Summary	

Filming, Videoing, Photography and Audio Recording at Partnership Meetings

The Council and members of the partnership may record / film / photograph or broadcast this meeting. Any member of the public who attends a meeting and objects to being filmed should advise the Democratic Services Team (in advance), who will instruct that they are not included in any filming.

If you require this document in large print, audio or Braille or in a different language, please contact the Democratic Services Team on 01502 523521 or email: democraticservices@eastsuffolk.gov.uk



The national Charter and Charter Plus Awards for Elected Member Development
East Suffolk Council is committed to achieving excellence in elected member development
www.local.gov.uk/Community-Leadership

East Suffolk Community Partnership Board (CPB) - Terms of Reference

Community Partnerships (CPs) are an innovative way for the Council, partners and communities to work together to 'bring ideas to life' by taking a local approach to local priorities.

1. Form and Membership

1.1 The core CPB membership is:

The Chair of the eight Community Partnerships:

- Aldeburgh, Leiston, Saxmundham and villages Community Partnership
- Beccles, Bungay, Halesworth and villages Community Partnership
- Carlton Colville, Kessingland, Southwold and villages Community Partnership
- Felixstowe Peninsular Community Partnership
- Framlingham, Wickham Market and villages Community Partnership
- Kesgrave, Rushmere St Andrew, Martlesham, Carlford and Fynn Valley Community Partnership
- Lowestoft and Northern Parishes Community Partnership
- Melton, Woodbridge and Deben Peninsular Community Partnership

Two representatives from:

- East Suffolk Council
- NHS Clinical commissioning Groups (to reflect Ipswich & East Suffolk / Great Yarmouth & Waveney CCG's)
- Suffolk County Council
- Suffolk Police (to reflect the Policing Command Areas)

At least two representatives from:

- The Business sector
- The Voluntary, Community and Social Enterprise sector
- Youth Voice

A representative from:

- Greenprint Forum
- Suffolk Association of Local Councils

1.2 The core members of the CPB will be expected to live, work or trade in East Suffolk; have sufficient authority to speak for their organisation/partnership; and report back to their organisation/partnership on the activities of the CPB.

1.3 The quorum for any meeting of the CPB will be one third of the members of the CPB. If there is not a quorum present at each meeting of the CPB, it will not be able to make any decisions at that meeting.

1.4 The membership of the CPB will be reviewed annually.

2. CPB Principles

- Involve local councils, public services, communities, voluntary sector organisations and businesses in planning and delivering joined up services that meet local needs
- Make the best collective use of our assets and resources
- Base decisions on data and intelligence about local places
- Identify, understand and address deprivation, disadvantage and hidden needs
- Champion, represent and influence on behalf of East Suffolk and the eight Community Partnerships

3. Role of the CPB

- i) Focus on cross cutting issues for which no one organisation is solely responsible
- ii) Actively support and send representatives to participate in the CPs Annual Forum
- iii) Develop an annual work plan based on local data and knowledge to address the cross-cutting CP priorities, and support delivery of the ES Strategic Plan
- iv) Support the CP priorities to address identified gaps in service provision using a solution focused and problem-solving approach
- v) Monitor and adapt its agenda in response to emerging issues affecting an individual CP area or a wider area in ES
- vi) Receive reports quarterly from the CP's on progress against their priorities, and such other verbal/written reports from other organisations or partnership bodies, as requested.
- vii) Develop proposals for expenditure against the annual Strategic budget of £300k per annum and seek authorisation for actual expenditure from the Leader of ESC
- viii) Seek funds from other external sources in order to deliver the priorities of the CPB
- ix) Create Task & Finish/Working Groups as required to explore specific issues / priorities in greater detail.
- x) Conduct or commission research into policy or service delivery issues affecting East Suffolk

4. Chair and Vice Chair of CPs

4.1 The CPB will be chaired by the Leader of ESC (a detailed Job Description is available).
The chair will:

- Provide a strong sense of purpose and direction to the CPB
- Drive the CPB's annual work programme

4.2 A Vice Chair will be elected annually by the members of the CP and will deputise for the Chair in his/her absence.

5. Meetings of the CPs

5.1 CPB meetings will be by invitation but held in public and their style will be inclusive and interactive. They will be organised to problem solve (for example workshop style) rather than as formal meetings. They will be held at least three times a year, but additional

meetings may be called by the Chair as necessary, on at least five clear working days written notice.

5.2 The dates of each CPB meeting will be agreed in advance by the CPB and they will be held at a suitable venue within East Suffolk.

5.3 Any member of the CPB may request that an item be included on the agenda for a meeting. The meeting papers will be published on the ESC website no later than five clear working days before the meeting.

5.4 Agendas and action points arising from each meeting will be recorded and published on the ESC website.

6. Voting

6.1 The aim at each CPB meeting will be to reach decisions by a consensus, however, should a vote be necessary, then all core members of the CPB (as listed in 1.1) will be eligible to vote, and each will have one vote, indicated by a show of hands. The Chair of the CPB will determine when there is no consensus and therefore an issue should be put to the vote. A majority vote of those present and voting will prevail. The Chairman of the CPB will have a casting vote.

7. Financial Accountability

7.1 The ES Council will operate as an accountable body for the CPB. The budget will be allocated against clear criteria which will be agreed at the first meeting of the CPB. These are designed to ensure that this funding is not used for purposes beyond the ES Council's powers, or the law, and that projects supported align with the ES Council's Strategic Plan.

East Suffolk Profile



Population

Key facts



Total population

248,250



Largest age group

70-74



Smallest age group

85+



Just over

1 in 6

people are aged
under 16

17%; national average 19%



More than

1 in 4

people are aged 65+

27%; national average 18%



9,610

people aged 85 or
over

3.9% of total population; national
average 2.4%

Population

Age breakdown

The age pyramid shows the age breakdown of the population of East Suffolk against the national average

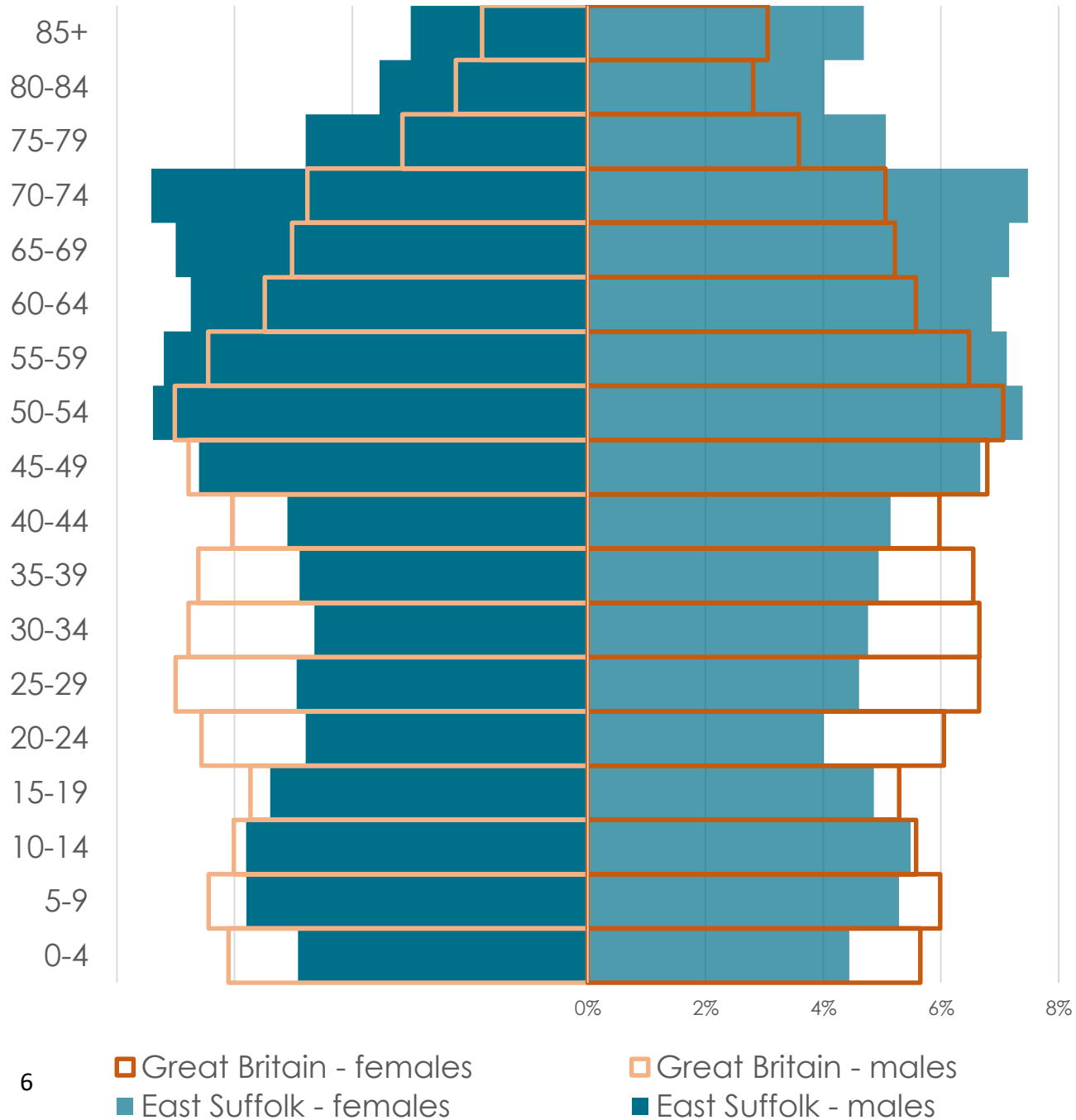
Most over-represented age group: 85+

Most under-represented age group: 20-24

All groups below the age of 50 account for a smaller proportion of the East Suffolk population than they do across Great Britain as a whole

The population has only grown 3.5% over the last decade compared to 6.8% growth in Great Britain

The population of Over 65's is forecast to grow by 39% by 2039



Deprivation

Key facts



15,900

people affected by
income deprivation

11.4%

Suffolk average 10.2%



9.8%

of working age
people affected by
employment
deprivation

Suffolk average 8.3%
13,600 people



6,300

children affected by
income deprivation

15.2%

Suffolk average 13.6%



8,700

older people affected
by income deprivation

10.5%

Suffolk average 10.2%

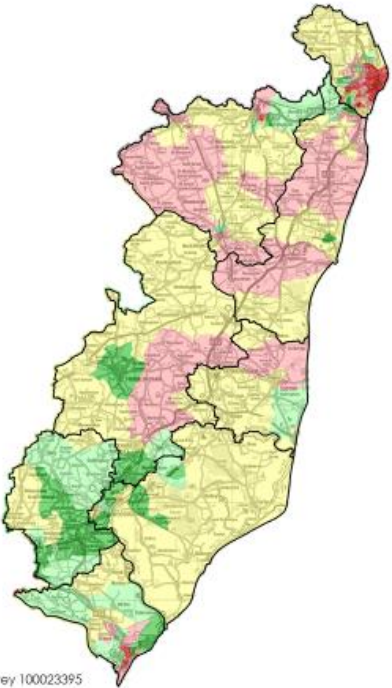
Deprivation

Key facts

Deprivation Overall

IMD quintile	Population	% of population
1	30,800	13%
2	49,200	20%
3	70,500	29%
4	40,200	16%
5	56,200	23%

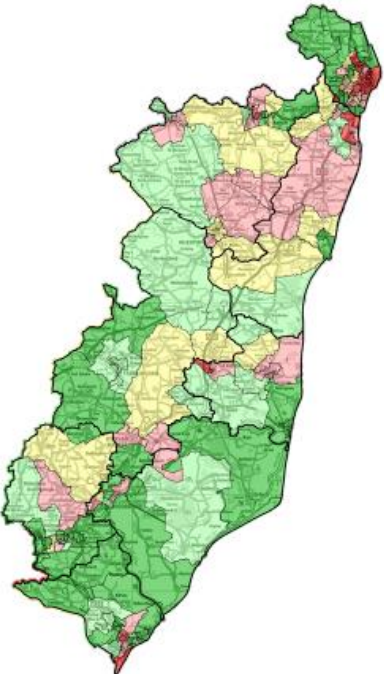
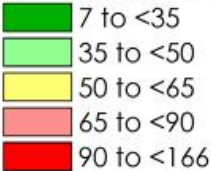
1 = most deprived 20% of areas in England
5 = least deprived 20% of areas in England



Source: DCLG Index of Multiple Deprivation 2019. Map © Crown copyright and database rights 2019 Ordnance Survey 100023395

Deprivation Children

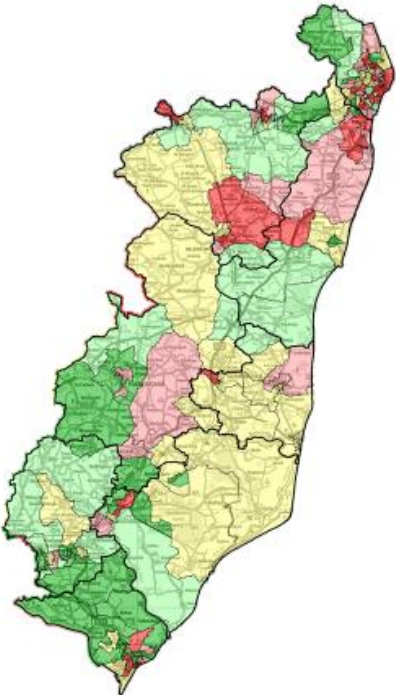
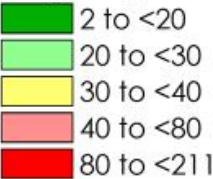
Children aged 0-15 income deprived



Source: DCLG Index of Multiple Deprivation 2019 and ONS 2017 mid-year estimates. Map © Crown copyright and database rights 2019 Ordnance Survey 100023395

Deprivation Older people

People aged 60+ income deprived



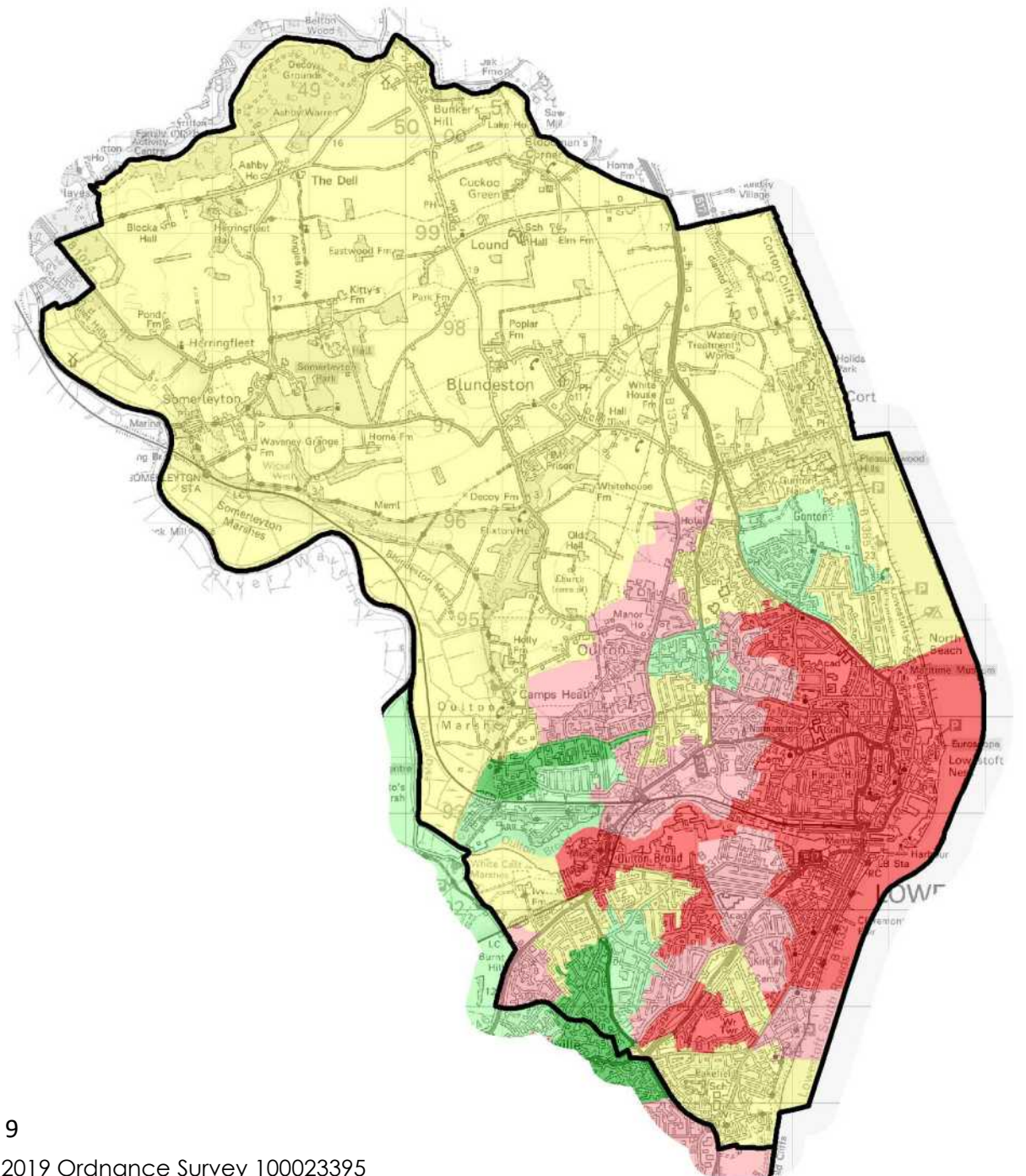
Source: DCLG Index of Multiple Deprivation 2019. Map © Crown copyright and database rights 2019 Ordnance Survey 100023395

Overall: Lowestoft and northern parishes CP

IMD quintile	Population	% of population
1	26,060	39%
2	14,880	23%
3	16,380	25%
4	5,890	9%
5	2,810	4%

1 = most deprived 20% of areas in England

5 = least deprived 20% of areas in England



Health and social care

Life expectancy

Suffolk Coastal
Waveney
Suffolk

Highest and lowest life expectancy in East Suffolk

Deben Ward (Woodbridge CP)	84.4	
Kirton Ward (Felixstowe CP)		93.1
Kirkley Ward (Lowestoft CP)	73.5	78.3

Life expectancy at birth for males	Life expectancy at birth for females
81.7	84.8
79.4	82.9
80.8	84.1



10.9 years

the gap in life expectancy for males between Deben Ward and Kirkley Ward



14.8 years

the gap in life expectancy for females between Kirton Ward and Kirkley Ward

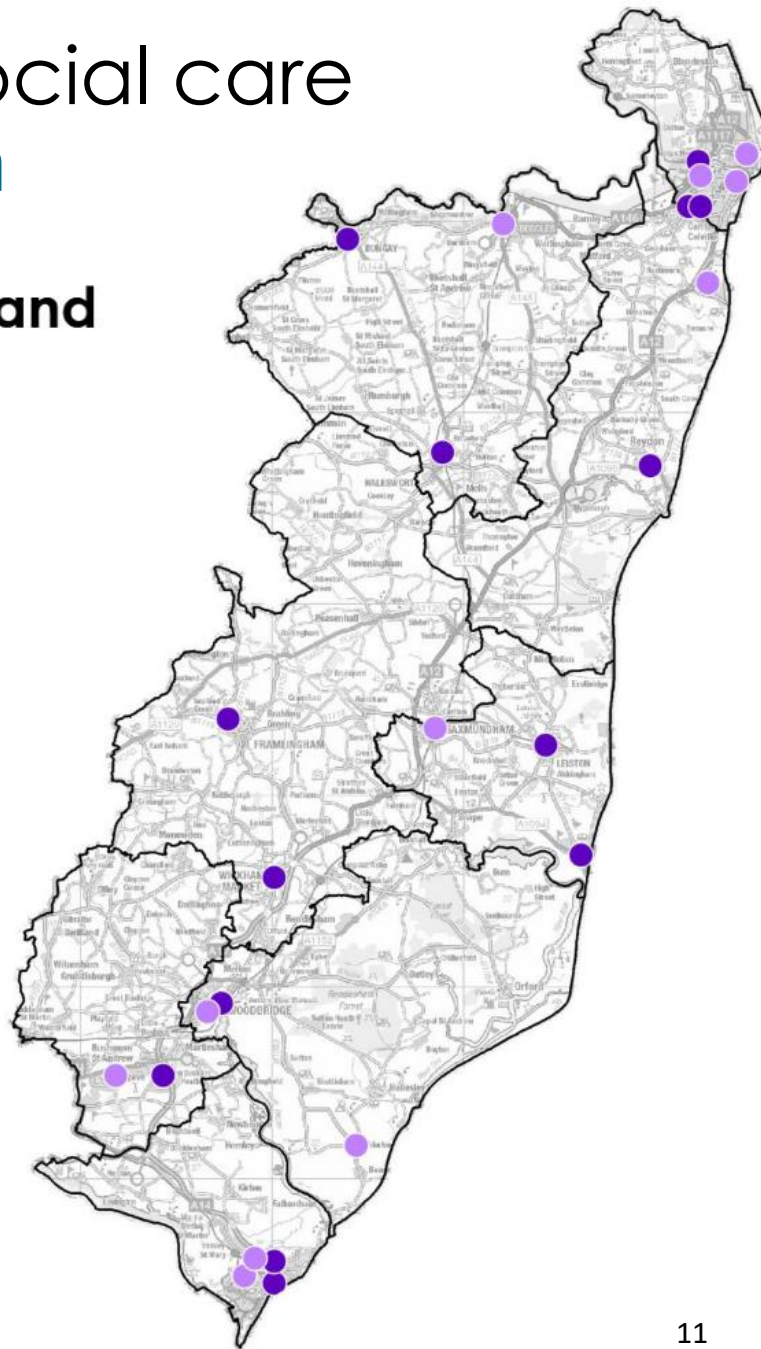
Health and social care

Mental health

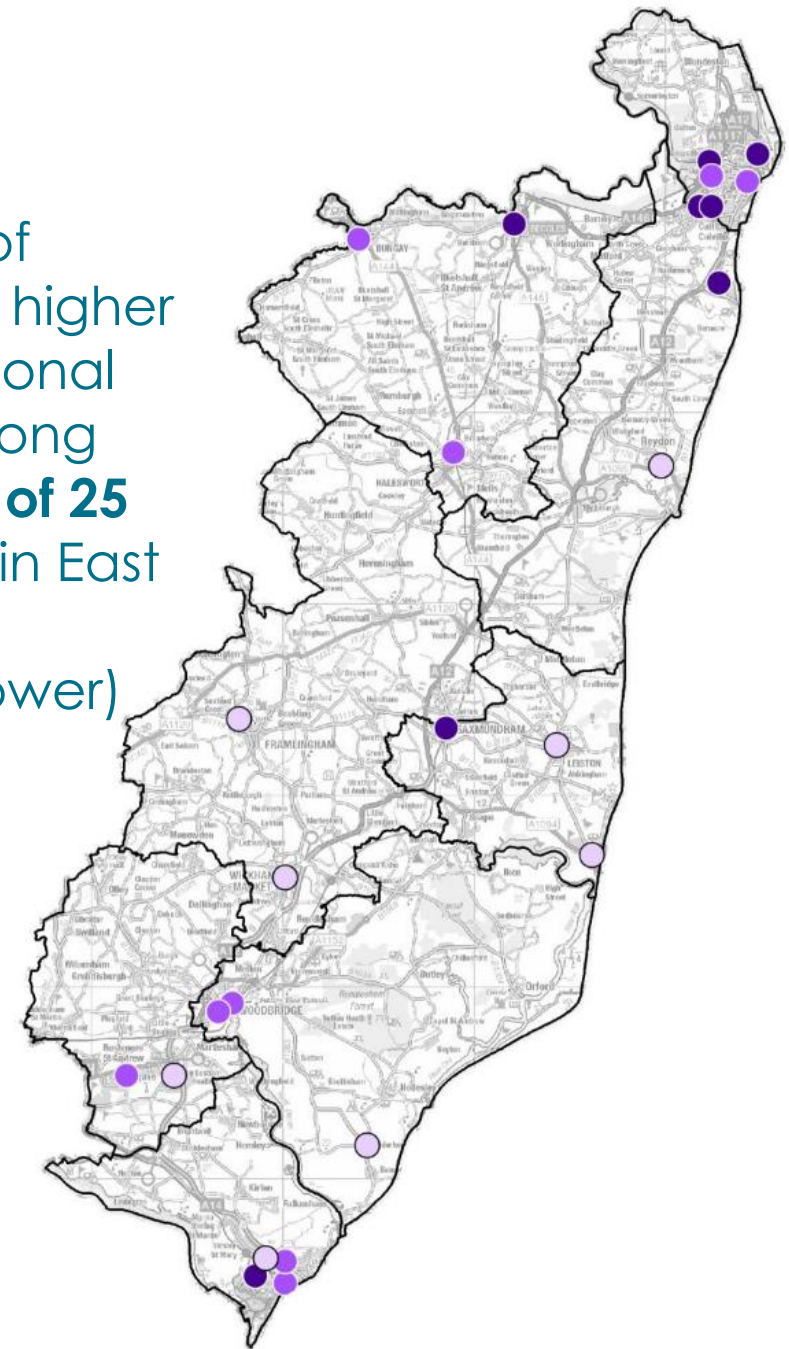
Compared to England

- Lower
- Similar
- Higher

Prevalence of **dementia** is higher than the national average among patients at **14 of 25** GP surgeries in East Suffolk (11 similar, 0 lower)



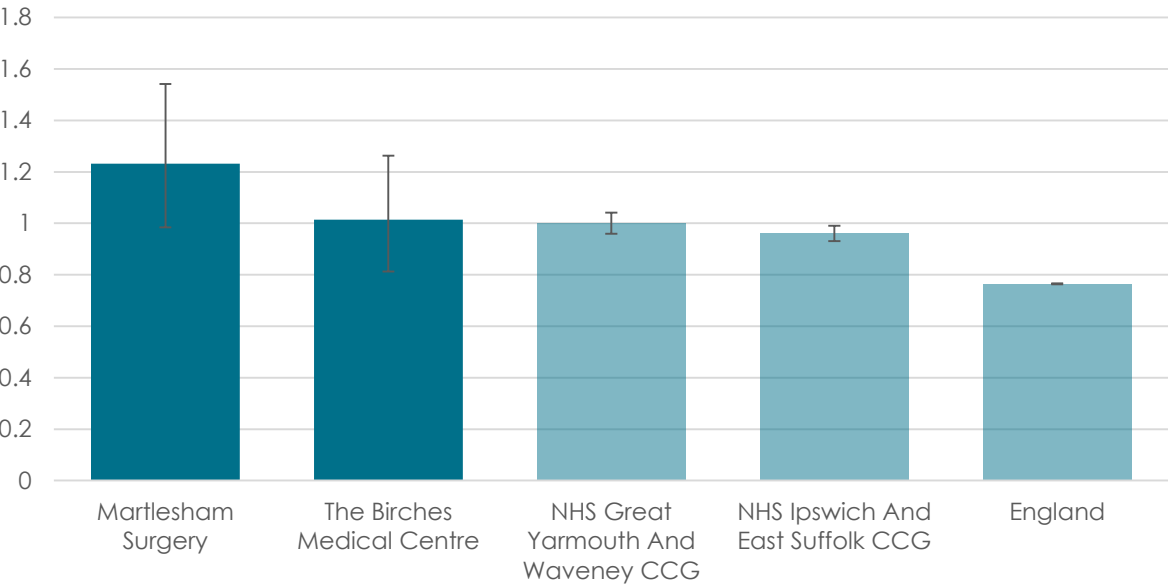
Prevalence of **depression** is higher than the national average among patients at **8 of 25** GP surgeries in East Suffolk (9 similar, 8 lower)



Health and social care

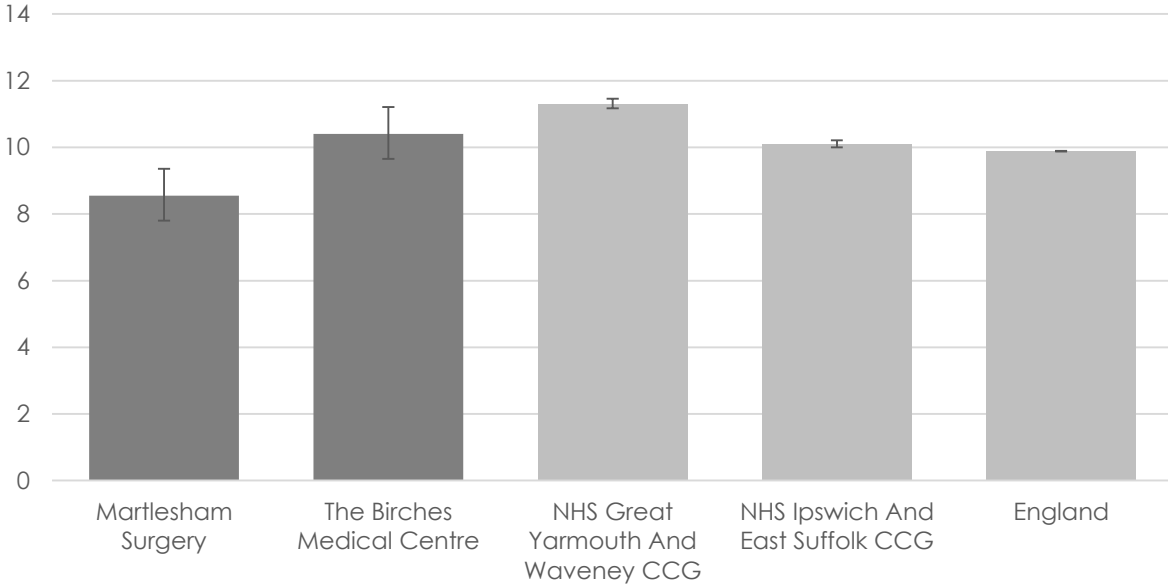
Mental health: Kesgrave, Martlesham and villages CP

Dementia: QOF prevalence (all ages)



Prevalence of dementia is higher than the national average among patients at both GP surgeries in the Kesgrave, Martlesham and villages Community Partnership area

Depression: Recorded prevalence (aged 18+)



Prevalence of depression is higher than the national average among patients at The Birches Medical Centre

Health and social care Childhood weight



Primary school children overweight
or obese

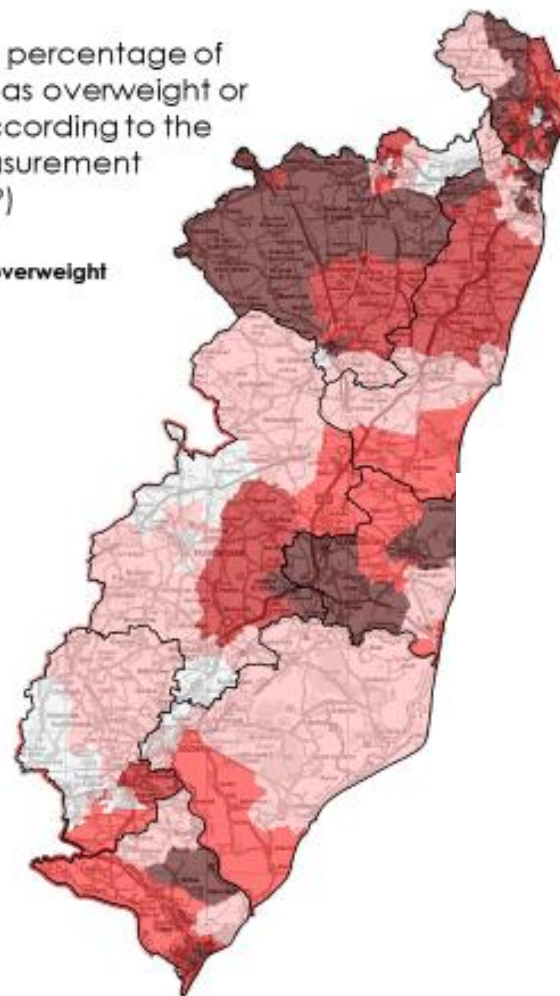
Lowest CP: Kesgrave & Martlesham 20.8%

Highest CP: Aldeburgh, Saxmundham & Leiston 32.5%

Suffolk: 26.3%

The map shows the percentage of children measured as overweight or very overweight according to the National Child Measurement Programme (NCMP)

% overweight or very overweight



Source: National Child Measurement Programme 2015-16 to 2017-18. Map © Crown copyright and database rights 2019 Ordnance Survey 100023395

Health and social care Weight and Activity



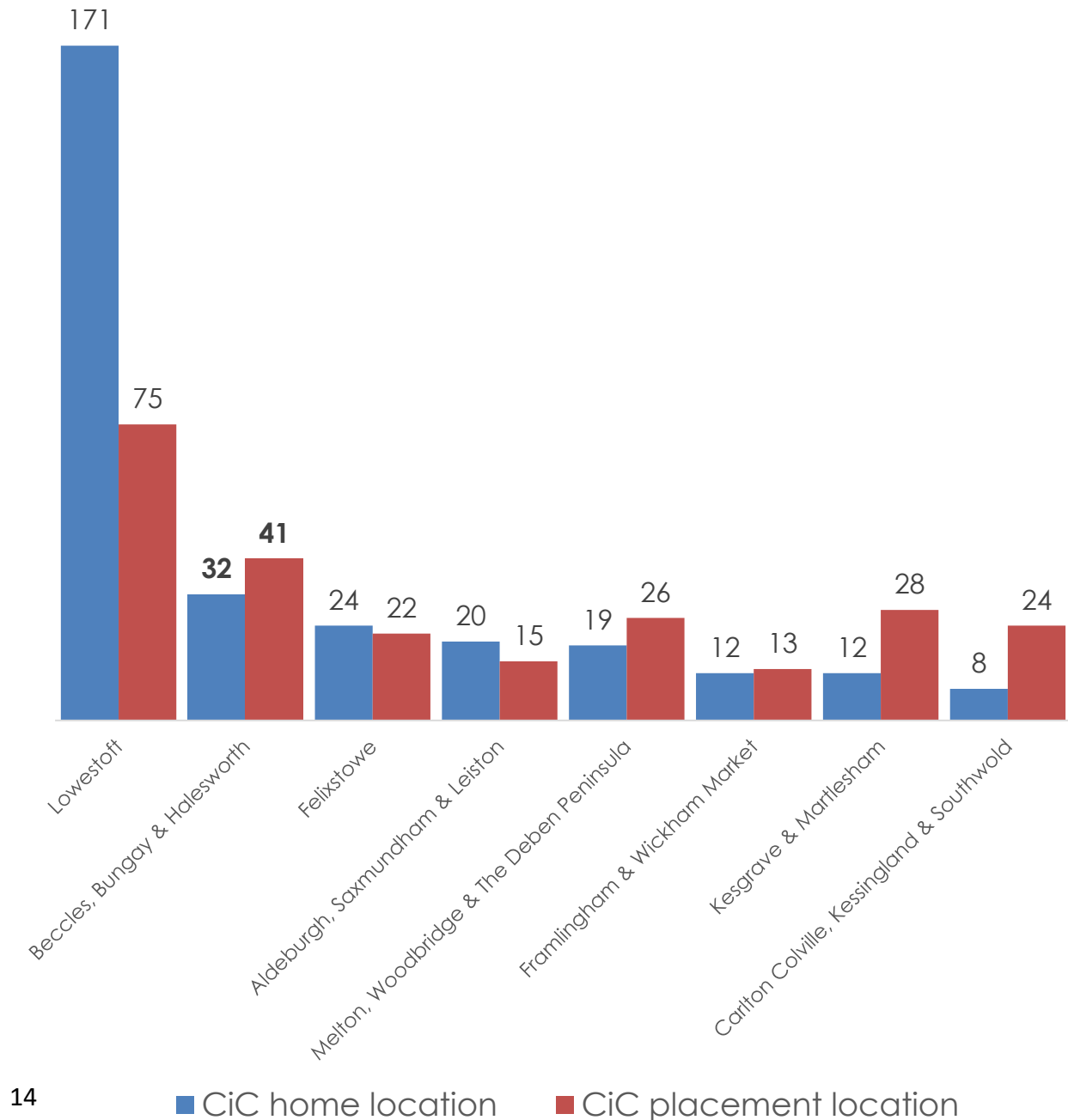
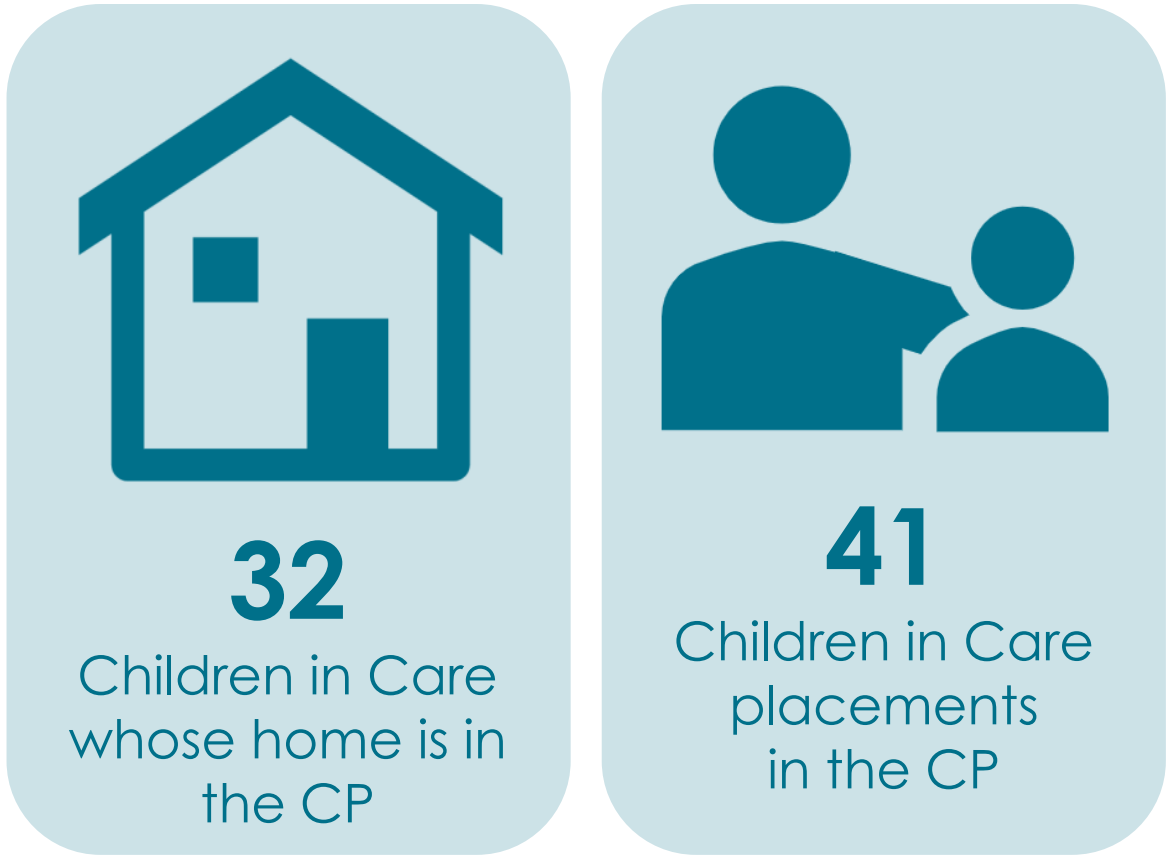
46.9%

of adults do not exercise

Lowest CP: Kesgrave & Martlesham 42.1%
Highest CP: Lowestoft 49.7%
Suffolk: 46.0%
UK average: 46.2%

Health and social care

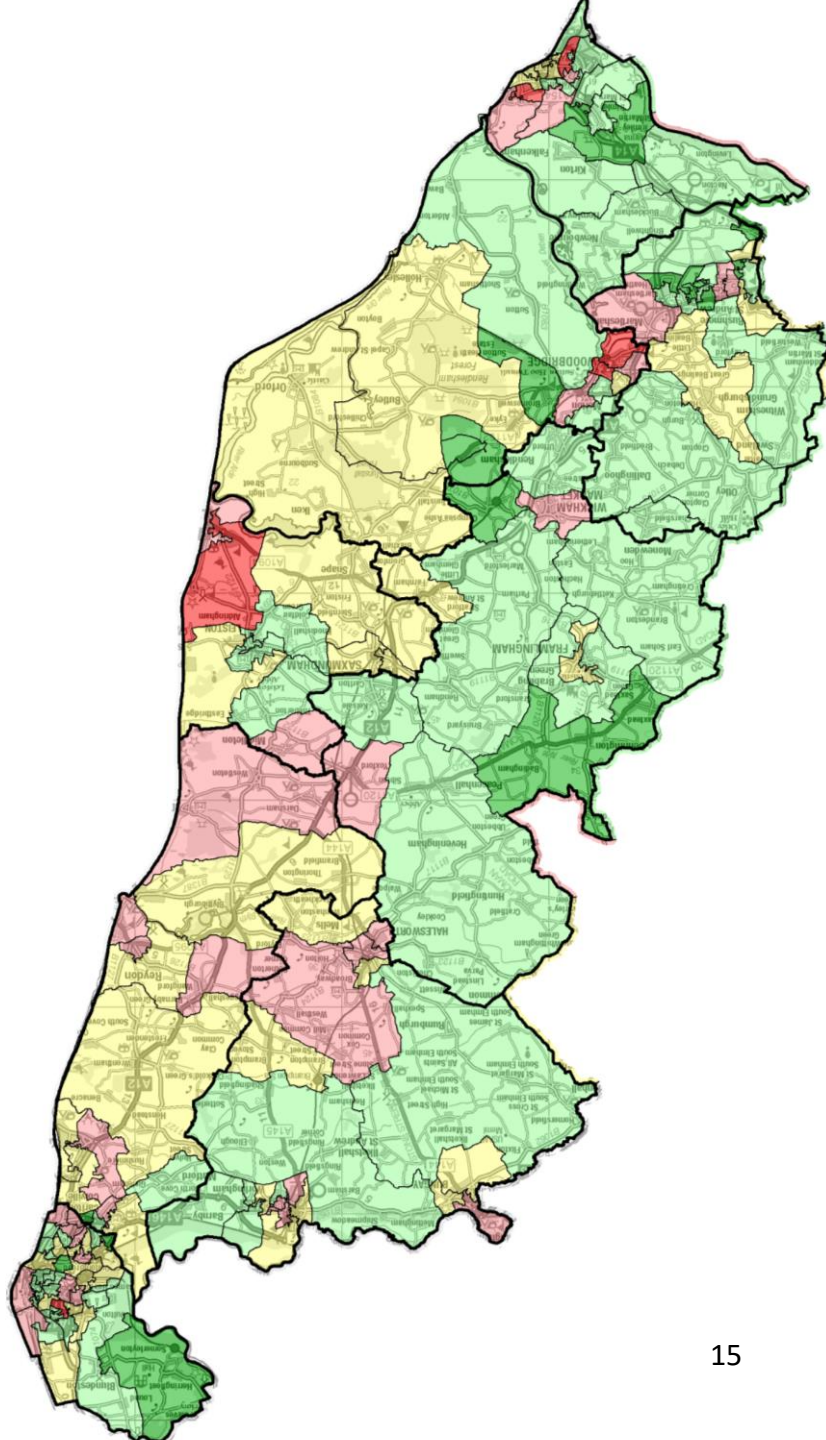
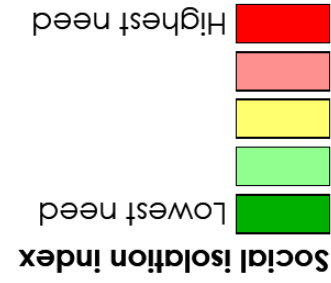
Children's care: Beccles, Bungay, Halesworth and villages CP



Health and social care

Social isolation

Social isolation



Source: DCLG Index of Multiple Deprivation 2019 and Experian 2016. Map © Crown copyright and database rights 2019 Ordnance Survey 100023395

Employment and education

Employment



Manufacturing

accounts for

1 in 9

jobs in East Suffolk,
compared to
1 in 10 across Suffolk
and 1 in 13 in England



Transport & storage

accounts for

1 in 10

jobs in East Suffolk,
compared to
1 in 17 across Suffolk
and 1 in 20 in England

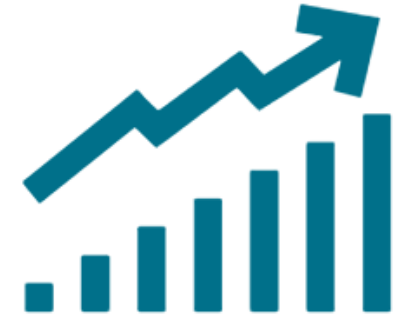


Hospitality

accounts for

1 in 10

jobs in East Suffolk,
compared to
1 in 14 across Suffolk
and 1 in 14 in England



Finance, property & insurance

accounts for

1 in 8

jobs in East Suffolk,
compared to
1 in 5 across Suffolk
and 1 in 4 in England

Employment and education

Benefit claimants



7.0%

of adults in receipt
of Universal Credit

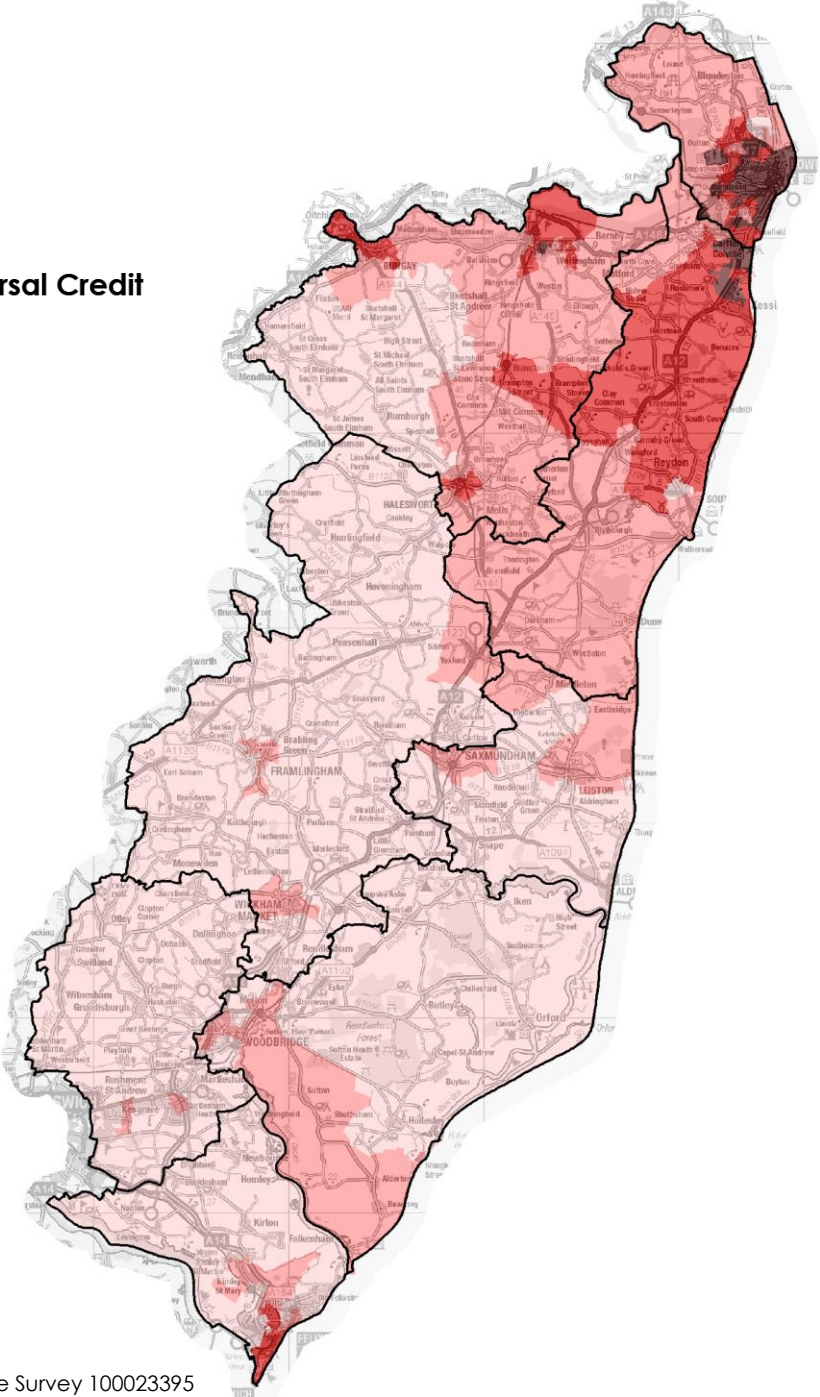
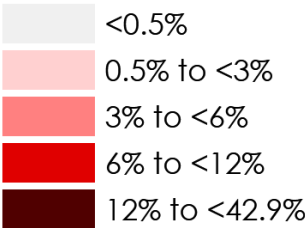
Suffolk average: **5.4%**

Highest CP: Lowestoft & northern

Parishes CP **15.7%**

Lowest CP: Kesgrave, Martlesham
& villages CP **1.7%**

% adults claiming Universal Credit



Employment and education

Education – Key Stage 2

Ofsted breakdown



62

Outstanding or Good



12

Require improvement
or Inadequate

Number of East Suffolk schools where the % of KS2 pupils...

■ Better than England average ■ Worse than England average



Employment and education

Education – Key Stage 4

Ofsted breakdown



10

Outstanding or Good

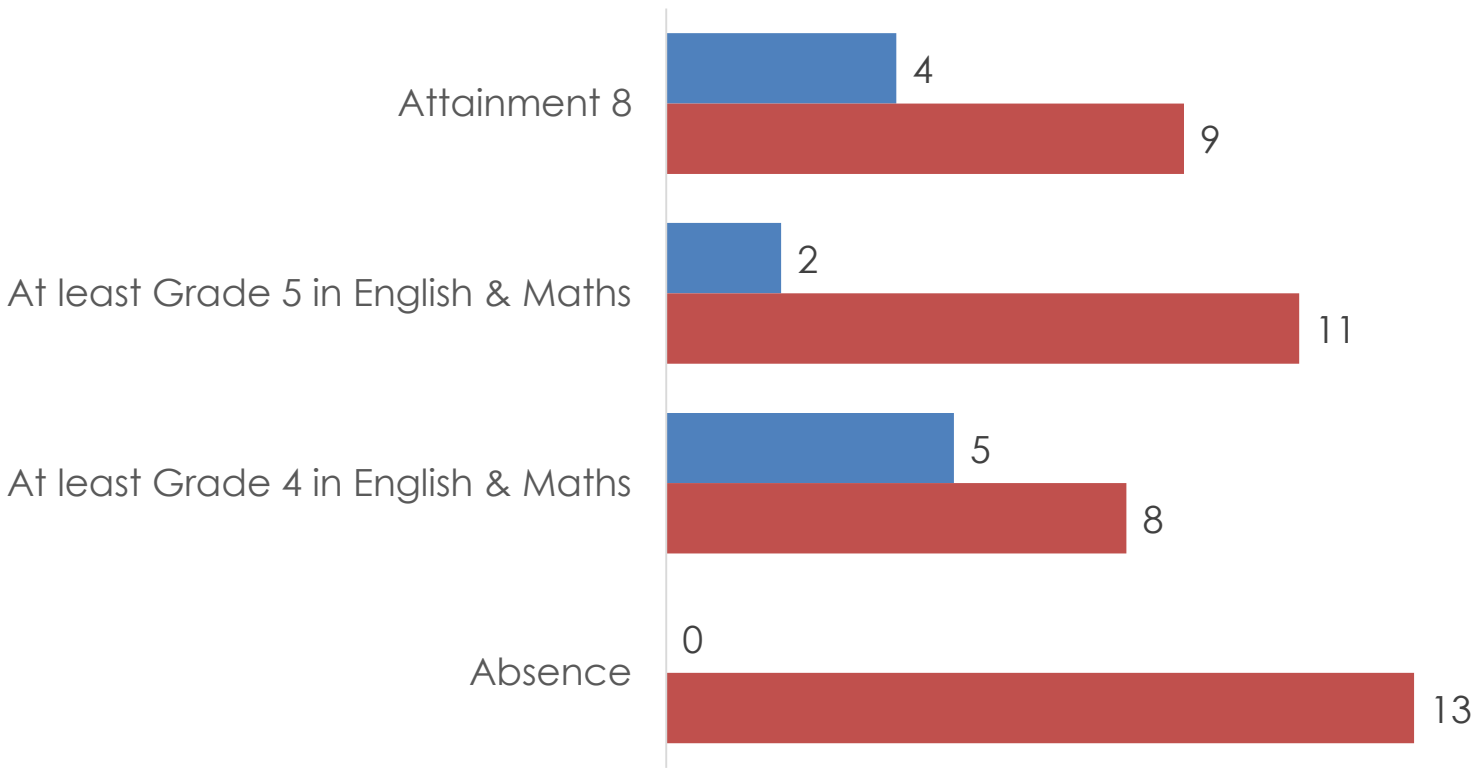


3

Require improvement
or Inadequate

Number of East Suffolk schools where the % of KS4 pupils...

■ Better than England average ■ Worse than England average



Housing Living environment



26,600

houses in poor condition;
24.2% of all houses

Suffolk average: **25.0%**
Lowest CP: Felixstowe Peninsular CP **18.3%**
Highest CP: Framlingham, Wickham Market & villages CP **44.0%**



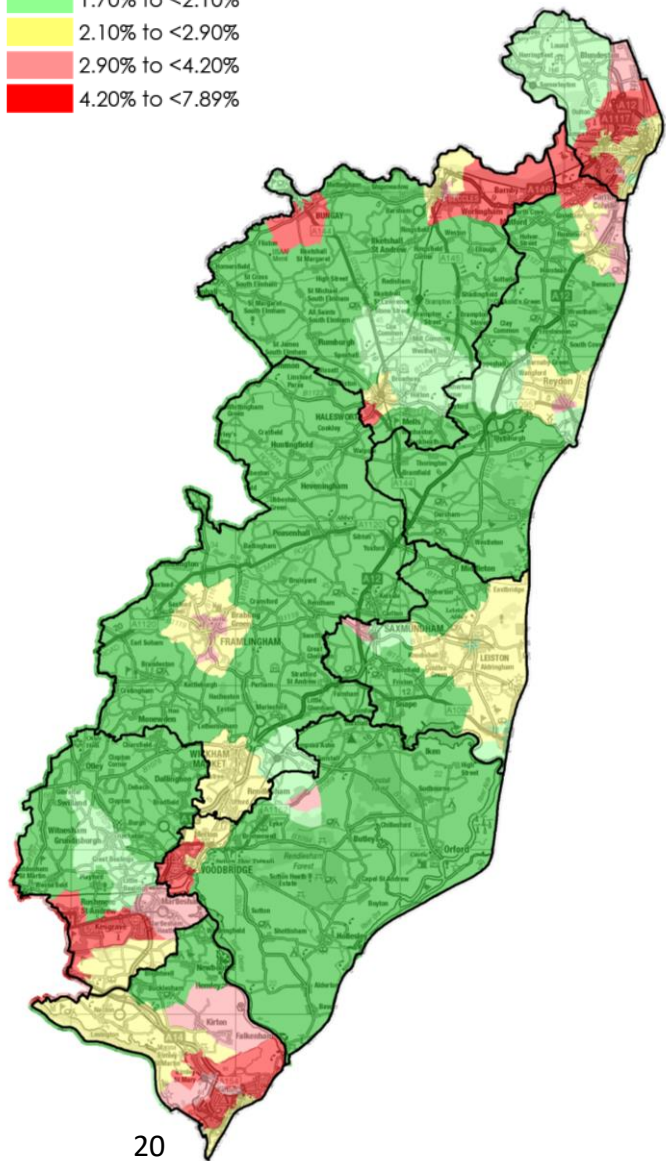
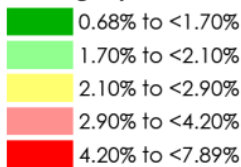
7,400

hard to heat homes;
6.8% of all houses

Suffolk average: **6.0%**
Lowest CP: Kesgrave, Martlesham & villages CP **3.3%**
Highest CP: Lowestoft & northern parishes CP **8.0%**

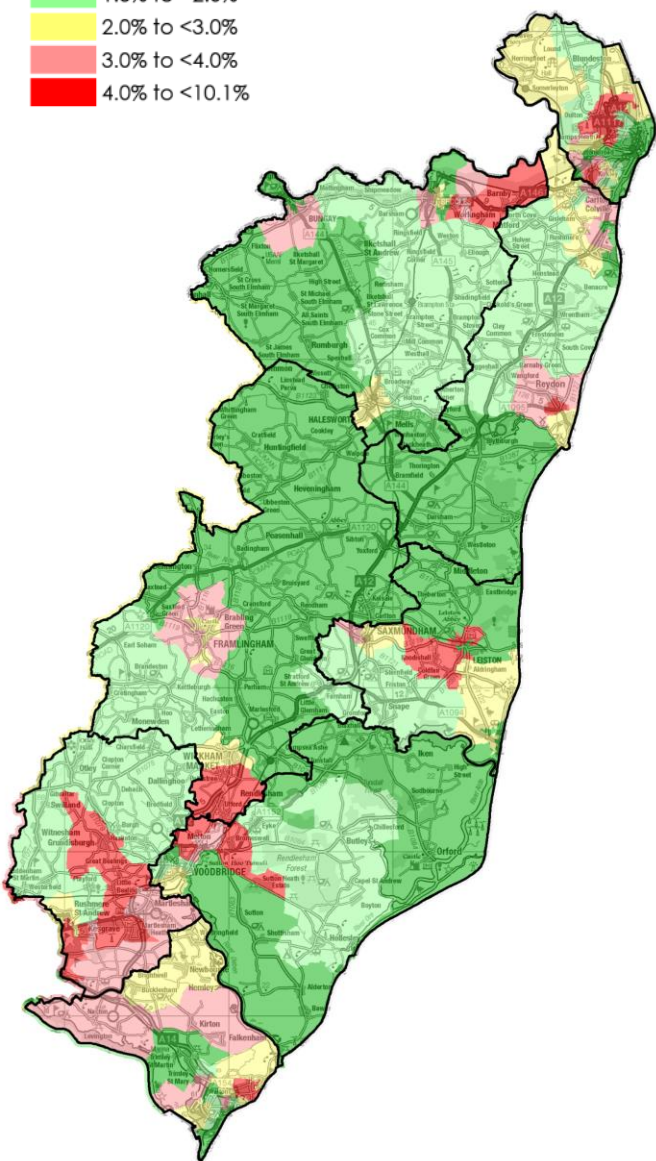
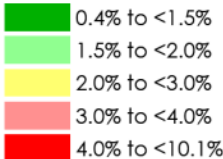
Housing in poor condition (IMD indicator)

Housing in poor condition



Hard to heat homes (IMD indicator)

Hard to heat homes



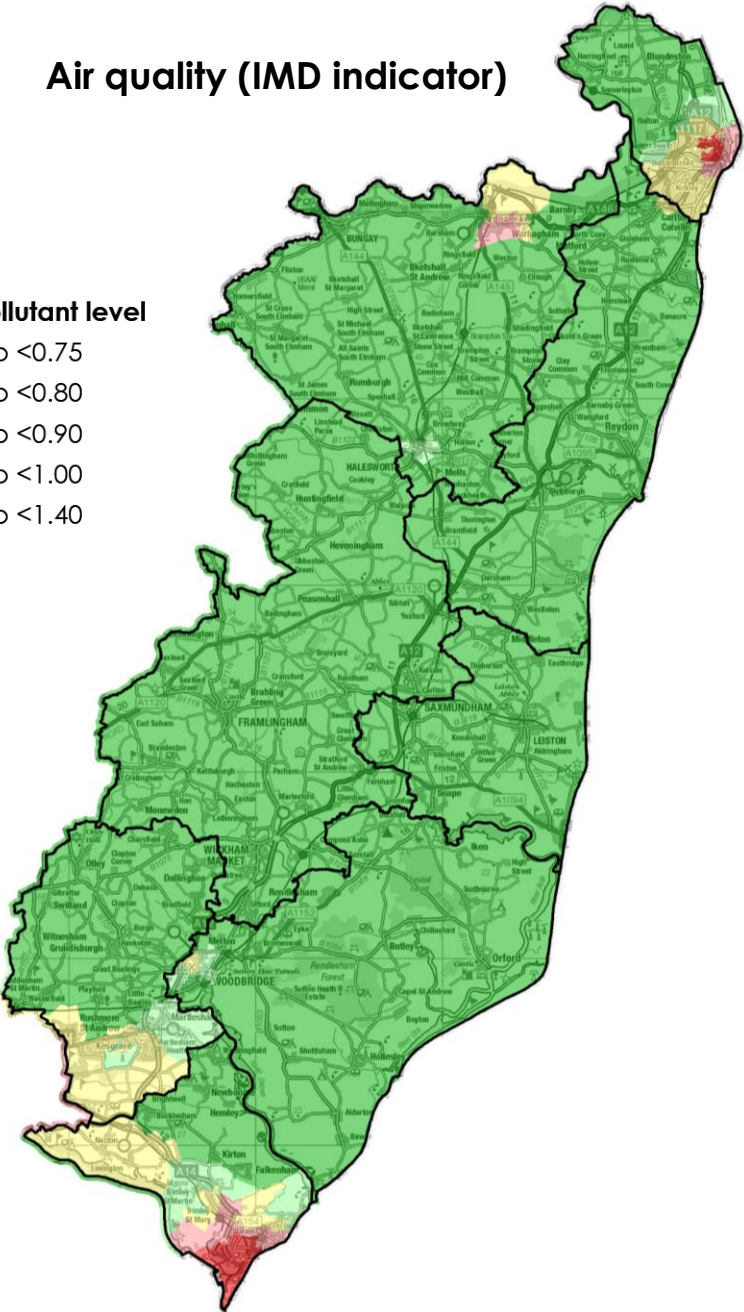
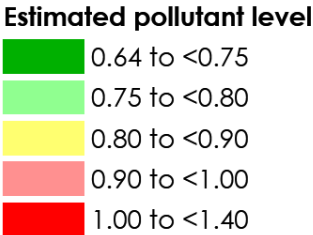
Environment

Air quality and attitudes towards climate change



- 33.9%** would make compromises to help the environment (UK 34.8%)
- 10.9%** do not buy something if it has too much packaging (UK 10.6%)
- 77.1%** recycle items rather than throwing away (UK 73.8%)
- 64.4%** make effort to cut down on water usage (UK 60.7%)
- 44.6%** have a reasonable knowledge of climate change (UK 45.6%)

Air quality (IMD indicator)



Community/services

Transport



73.2%

of homes are within
1/4 of a mile of a
frequent* bus
service

Lowest CP: Framlingham &
Wickham Market 38.3%
Highest CP: Kesgrave &
Martlesham 84.9%

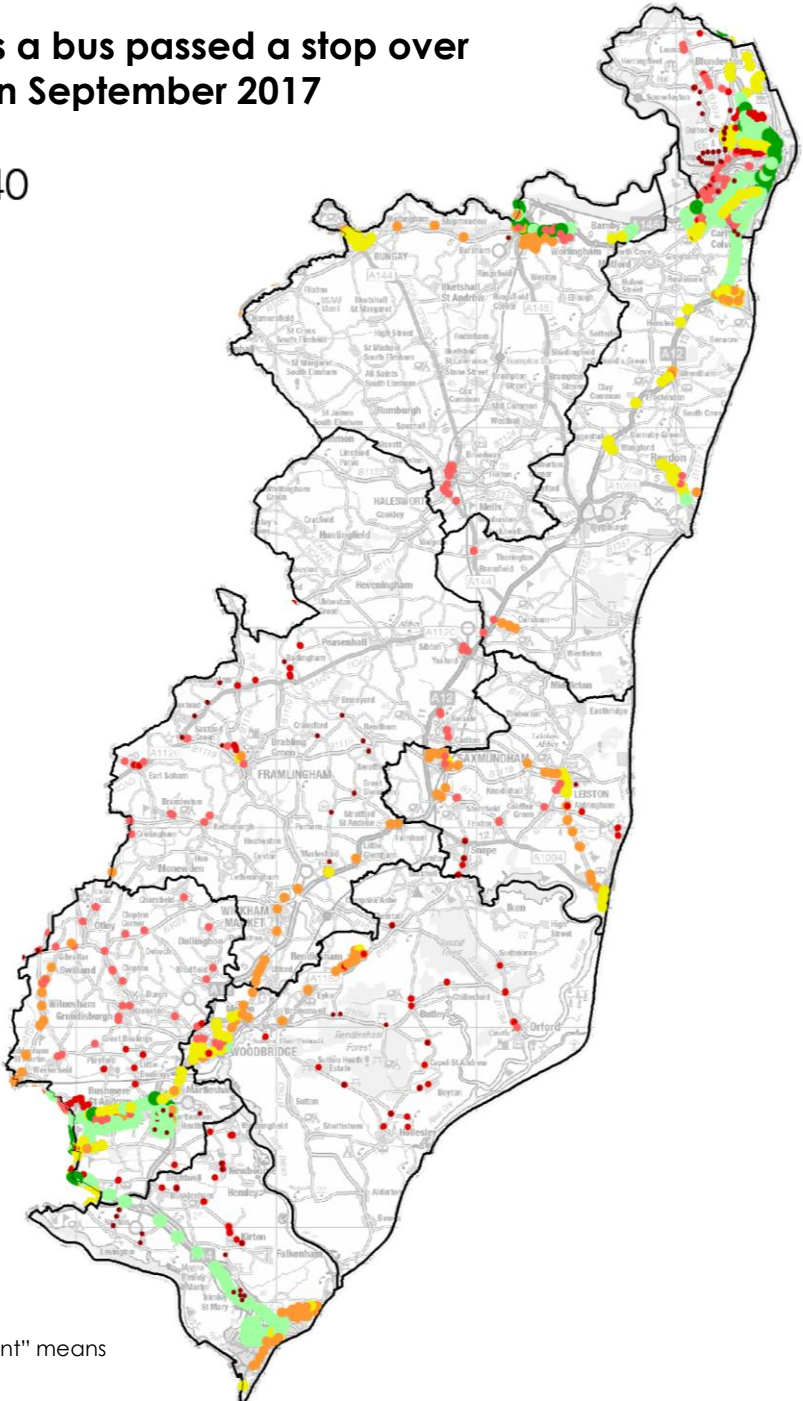


8.2%

of homes are more
than 2 miles from a
frequent* bus
service

Lowest CP: Kesgrave,
Martlesham & villages 0.0%
Highest CP: Beccles,
Bungay, Halesworth &
villages: 32.4%

Number of times a bus passed a stop over
a 3 day period in September 2017



Community Partnership Priorities

Lowestoft and northern parishes	Kesgrave, Martlesham and villages	Melton, Woodbridge and Deben Peninsula	Carlton Colville, Kessingland, Southwold and villages
1. Improve mental health and wellbeing (45)	1. Reduce social isolation & loneliness (27)	1. Active and sustainable transport provision (39)	1. Active and sustainable transport provision, particularly rural (27)
2.= Tackle childhood obesity (31)	2. Environmental care and sustainable transport (23)	2. Village Hub – bringing services to people (28)	2. Reduce social isolation and loneliness
2.= Reduce social isolation – all ages (31)	3. Support people to age well/Traffic and road safety (17)	3. Youth Engagement, opportunities and services (21)	3. Facilities, activities and employment for young people (20)

Felixstowe Peninsular	Beccles, Bungay, Halesworth and villages	Framlingham, Wickham Market and villages	Aldeburgh, Leiston, Saxmundham and villages
1. Community spaces and physical enhancements (35)	1. Active and sustainable transport solutions / community transport (47)	1. Developing opportunities for young people (24)	1. Transport and access to services (30)
2. Social isolation and loneliness (33)	2. Reduce social isolation and loneliness (42)	2.= Reduce social isolation and loneliness (22)	2. Economic Regeneration / High Streets (28)
3. Education – aspirations, ambition and standards (24)	3. Improve wellbeing and enable people to live healthy lives (34)	2.= Alternative, active and sustainable transport provision (22)	3. Housing that meets local needs (18)



East Suffolk Community Partnership Board

Monday 16th March 2020

Community Partnerships Overview of Progress

Community Partnership Workshops

Between 27th October and 27th November 2019, the new East Suffolk Community Partnerships were launched through a programme of eight workshops, one in each Community Partnership area. Attendance ranged from 30 to 80 participants per workshop.

Each workshop was focused around a tailored data pack produced by the SCC Knowledge Team. Three priorities were agreed by those present at each workshop, derived both from the data presented on the evening and from intelligence about local needs:

Community Partnership Priorities			
			
Lowestoft and northern parishes	Kesgrave, Martlesham and villages	Melton, Woodbridge and Deben Peninsula	Carlton Colville, Kessingland, Southwold and villages
1. Improve mental health and wellbeing (45)	1. Reduce social isolation & loneliness (27)	1. Active and sustainable transport provision (39)	1. Active and sustainable transport provision, particularly rural (27)
2.= Tackle childhood obesity (31)	2. Environmental care and sustainable transport (23)	2. Village Hub – bringing services to people (28)	2. Reduce social isolation and loneliness
2.= Reduce social isolation – all ages (31)	3. Support people to age well/Traffic and road safety (17)	3. Youth Engagement, opportunities and services (21)	3. Facilities, activities and employment for young people (20)
Felixstowe Peninsular	Beccles, Bungay, Halesworth and villages	Framlingham, Wickham Market and villages	Aldeburgh, Leiston, Saxmundham and villages
1. Community spaces and physical enhancements (35)	1. Active and sustainable transport solutions / community transport (47)	1. Developing opportunities for young people (24)	1. Transport and access to services (30)
2. Social isolation and loneliness (33)	2. Reduce social isolation and loneliness (42)	2.= Reduce social isolation and loneliness (22)	2. Economic Regeneration / High Streets (28)
3. Education – aspirations, ambition and standards (24)	3. Improve wellbeing and enable people to live healthy lives (34)	2.= Alternative, active and sustainable transport provision (22)	3. Housing that meets local needs (18)

Looking across all eight workshops and aggregating the total votes for each priority issue, the top priorities for East Suffolk are as follows:

	Priority	Number of Votes (across all eight CPs)
1	Reduce Social isolation and loneliness	201
2	Active and sustainable transport links	190
3	Improve mental health and wellbeing	150
4	Community 'hubs', buildings and spaces	121
5	Opportunities, activities and facilities for young people	118

East Suffolk Priorities

A workshop on Community Partnerships was held at the East Suffolk Partnership Forum on 15th November 2019. This focussed on an aggregated East Suffolk data pack (which will be presented at the Board meeting). The workshop was attended by more than 50 of the conference delegates, who agreed the following as their priorities:

- 1) Social Isolation – 5 Tables
- 2) Obesity and Healthy Weight – 3 Tables
- 3) Mental Health and Wellbeing – 3 tables
- 4) Crime – 2 Tables

The top two of these - Social Isolation and Loneliness / Active and Sustainable Transport Links - were top three priorities for six of the eight individual Community Partnerships. It is therefore proposed that these should be the key focus areas for the new East Suffolk Community Partnership Board.

First and Second Community Partnership Meetings

The first round of Community Partnership meetings took place between 27th January 2020 and 27th February 2020 and a second round of meetings has been arranged for each area prior to the end of the financial year to agree the allocation of their 2019/20 funding pot:

Community Partnership	Meeting 1	Meeting 2
Aldeburgh, Leiston, Saxmundham and villages	27 th January	23rd March (E)
Lowestoft and northern parishes	29 th January	11 th March (E)
Beccles, Bungay, Halesworth and villages	3 rd February	9th March (E)
Framlingham, Wickham Market and villages	6 th February	18 th March (E)
Carlton Colville, Kessingland, Southwold and villages	19 th February	18 th March (D)
Kesgrave, Rushmere St Andrew, Martlesham, Carlford and Fynn Valley	20 th February	31 st March (E)
Felixstowe Peninsular	24 th February	30 th March (D)
Melton, Woodbridge and Deben Peninsular	27 th February	30 th March (E)

Core members of the Community Partnerships are County and District Councillors, Town Councils, Parish Councils and Meetings, Suffolk Police, the Clinical Commissioning Groups, Community Action Suffolk (in advance of leading a process to secure VCSE nominations to the CPs), businesses and the Greenprint Forum.

The focus of each meeting was to further define the priorities for that Community Partnership, to identify the main causes of the problem, understand what is already in place and identify potential solutions to bridge the gap. Many have formed Task and Finish Groups to develop project ideas further prior to their next meeting but each Community Partnership Chair will provide a brief update on progress at the meeting.

Nicole Rickard
Head of Communities, East Suffolk Council



East Suffolk Community Partnership Board

Monday 16th March 2020

Social Isolation and Loneliness in East Suffolk

Background

A significant amount of work has already been undertaken on Social isolation in East Suffolk, including the ground-breaking hidden needs mapping and associated Hidden Needs Grant Programme, which has to date enabled eight innovative community projects to tackle social isolation and loneliness (amongst older people or families with limited resources) in the hidden need 'hot spots' identified through the mapping. These projects are:

1. Everyday ActivEast in Leiston, Felixstowe and Woodbridge
2. English Touring Opera 'Turtle Song' project for people with dementia and their carers
3. Thursday's at the Fisher - dementia friendly screenings at the Fisher Theatre in Bungay
4. Compassionate Companions end of life project on the Deben Peninsular
5. New Age UK Chinwags groups in Aldeburgh, Beccles, Wickham Market and Woodbridge
6. A new minibus for the Rose and Sweet William Club in Leiston
7. Relocation of the Beccles Men's Shed to a new home in the town
8. A School Volunteering programme at Melton Primary School

The programme was overseen by a multi-agency grant panel, which included the Suffolk Community Foundation (from whom the Suffolk Hidden Needs report originated), Community Action Suffolk, Suffolk County Council and East Suffolk Council. The difference between this programme and other grant schemes in the area was that each project had to have been supported by their respective Communities Officer, CAS Officer or SCC Building Community Capacity Officer and had to target a 'hot spot' area identified through the data pack.

Community Partnerships

As outlined in Report ES/0338, six of the eight Community Partnership workshops identified **Social Isolation & Loneliness** in their top three priorities, it was top overall in terms of combined number of votes and was also a clear priority at the East Suffolk Partnership Forum workshop in November 2019. Appendix A shows an overview of the notes from across the workshops, indicating potential priority groups and solutions.

There is a huge amount of work already going on to tackle Social Isolation and Loneliness in East Suffolk, including initiatives such as Good Neighbour Schemes (led by Community Action Suffolk), Meet Up Mondays (led by the Rural Coffee Caravan and Community Action Suffolk), Men's Sheds, Intergenerational activities and events, Talking Benches and many more. However, the Community Partnership workshops clearly indicated that there is more to be done.

Progress Update since the Community Partnership Workshops

Suffolk County Council Knowledge Team has been busy updating the Hidden Needs maps produced two years ago, but with a wider focus on all age groups (young people, working age and older people) and including a range of different factors that might contribute to Social Isolation and Loneliness.

This mapping will be presented at the March Community Partnership Board meeting.

It is proposed to re-form the Hidden Needs Steering Group to oversee activity around the Social Isolation and Loneliness priority on behalf of the CPB, to include Suffolk Community Foundation, Community Action Suffolk, Suffolk County Council, East Suffolk Council and any other partners who wish to be involved.

Funding Proposals

1 Relaunch Hidden Needs Grants Programme

It is proposed to expand and relaunch the Hidden Needs grant programme (which currently focusses on older people and families with limited access to resources), based upon the updated mapping and the priority groups/areas identified for 2020.

There is £40,264 remaining in the pot and a further £20,000 has been made available through the final funding allocation from the East Suffolk Partnership giving a total (as of end February 2020) of £60,264.

It is therefore proposed to contribute a further £40,000 from the CPB budget to take the amount of funding available to **over £100,000**. The upper grant limit for applications would be £10,000.

The Programme would be overseen by the Steering Group (outlined above) who would act as the Grants Panel, supported by the Funding Team at East Suffolk Council.

2. New Small Grants Fund

In addition, it is proposed to offer small grants in each Community Partnership area by providing a ringfenced pot of £2,500 per Community Partnership (i.e. a total of **£20,000 across the eight areas**) for start-up grants of up to £500 per project to kick-start small scale projects to reduce Social Isolation and Loneliness

These could include, but would not be limited to, the following:

- Good Neighbour Schemes
- Meet Up Mondays
- Talking/Listening Benches
- Men's Sheds
- Intergenerational Events
- ...and many more locally led ideas

The process of applying for these grants would be simpler and decision making quicker than the main fund. It is proposed that someone from each Community Partnership be involved in a virtual Panel to enable local input into the decision-making process.

It is therefore proposed to allocate a total of **£60,000** from the 2019/20 Community Partnership Board budget for the two Hidden Needs Grants programmes to ensure that we continue to support the wide range of community and VCSE-led initiatives that we know are making a difference in East Suffolk.

3. Rural Needs

It is clear that rural needs are a priority for all the Community Partnerships, even where the majority of the population live in more urban areas/towns. During the first round of Community Partnership meetings, access to services, employment and training opportunities and leisure/social activities was an obvious priority for communities, Town and Parish Councils, and the organisations working with them, in East Suffolk.

It is therefore proposed that we work through Community Action Suffolk to do further work around identifying the most rurally isolated/remote communities in East Suffolk that are also social isolation hot spots and undertake pro-active work to stimulate community activity focussed around a community 'hub' (village hall, community centre, church building etc.).

The aim of this would be to use existing assets to their full potential in terms of meeting the needs of the whole community and maximising the opportunities for social connectivity. The allocation could include some funding to enable new activities, for example sports equipment for a wellbeing hub, toys for a mother and toddler group or an urn and crockery for an intergenerational tea dance.

Community Action Suffolk are also keen to 'rural proof' the work of the eight Community Partnerships to ensure that funding is benefitting more remote rural communities. It is proposed that £15,000 of the 2019/20 budget be allocated for the above projects specifically targeting more rural communities in each Community Partnership area.

Nicole Rickard / Chris Abraham

East Suffolk Council / Community Action Suffolk

March 2020

Appendix 1

Community Partnership Workshop Notes - Social Isolation

Who?

- All ages x 2
- Young People
- Children
- Adults 45+
- Adults 65+
- Older Adults x 14
- Hidden needs for older people - need services, facilities and company
- Housebound
- Those with vulnerabilities
- People with depression
- People with dementia
- Those living in deprivation
- Widows
- Rural areas/living in villages x 5
- Young people who do not drive
- Young people impacted by social media
- Unemployed

Solutions...

- Friendship / Chat benches x 2
- Community lunches
- Volunteer schemes e.g. befriending schemes, home visits
- 'Street champions'
- Community hubs/spaces – health and wellbeing/social connections x 4
- Men's Sheds
- Improve community spaces for social interactions
- Community groups addressing isolation
- Meet Up Mondays
- Good Neighbour Schemes
- Social facilities for older people
- Improve reach of initiatives to ensure get to older people
- Intergenerational interaction opportunities x 3 and learning
- IT projects/training
- Mobile outreach services for rural areas
- Help people to move around to access services/ensure transport links people together x 2
- Encourage communication x 2
- Use of social media
- Community engagement x 2

Additional Context

- Need more information about different ages and why they are socially isolated
- Links to mental health and long-term health conditions – physical and emotional impact
- More likely to be victims of scams – vulnerable lonely people need protecting
- Linked to feeling valued
- Encourage more families into specific areas by providing more for them
- Opportunities for engagement and the work of VCS and community groups in the area
- Visibility of safe areas for people within towns



East Suffolk Community Partnership Board

Monday 16th March 2020

Focus on: Transport

Background:

The eight Community Partnership workshops in October/November 2019 identified two clear priorities for East Suffolk - **Social Isolation & Loneliness** and **Transport**.

The workshops identified many dimensions to the transport priority – for example connectivity, green vehicles, walking and cycling, community transport and alternative forms of transport provision – see Appendix for more details.

Since those workshops some initial work has been carried out with ESC & SCC to identify what transport and access to services data and modelling information is available for East Suffolk. What is clear is that this complex area will need a significant amount of focussed work to support the Board to make informed choices about how it can best use its influence and resources to achieve the most impact.

Proposal:

It is therefore proposed that an East Suffolk transport workshop/hothouse event be held in May/June to further define the issue, clarify the priorities and identify specific gaps in provision (either thematic e.g. young people, access to employment, evening and weekend transport etc. or geographic i.e. specific problems in specific places).

This hothouse session would include representatives from each Community Partnership plus relevant other organisations (ESC, SCC, CAS, Community Transport providers, Greenprint Forum etc.)

It is also clear that we need some expertise in East Suffolk to work with the Board to identify potential projects and help local organisations and groups to develop these.

Funding:

The funding available to the Board is £150,000 for 2019/20 and then £300,000 for the next three years – although individual Community Partnerships can also put forward proposals to spend.

Recommendations:

It is recommended that the Board allocate a total of **£75,000** from the 2019/20 Community Partnership Board budget to this priority for the conference/hothouse, additional support resources and project funding. However, it is also recommended that most of the funding would be ringfenced to support local project development and delivery.

Appendix 1

Community Partnership Workshop Notes - Transport

- Transport overall x 13
- Public transport x 10
- More up to date and detailed information on access to transport and service accessibility
- Need more data on provision of public transport
- Increase number of trips by public transport/bike/foot
- Rural transport x 10 [rural transport links to isolation] / regular bus services in villages x 3
- Transport to allow free movement around towns, rural areas and industrial business parks
- Accessible / wheelchair accessible transport for people with disabilities x 5
- Regular x 4 and Flexible x 2 Transport
- Green/sustainable transport – reduce pollution and congestion / Green buses x 3
- Run later / earlier times / evening transport x 3
- Integrated transport policy including community transport x 4
- Community transport – general x 5, more money x 2, lack of x 3
- Transport links/connectivity x 3
- More affordable/low-cost x 5
- Better access, particularly for young people x 4 / transport to college x 2

Who and Where?

- Transport for everyone!
- Prioritise young people and older people x 2
- Lack of bus services within short walk for older people
- Available links and transport for rural areas for both young and older age groups
- Transport for the elderly to allow access to community events, doctors, support groups x 2
- Lack of transport east of the A14
- Transport linking the villages to towns e.g. Halesworth
- Transport in the Oulton area
- Poor infrastructure through Martlesham increases volume of traffic
- Link up/reach areas of social housing
- To get people to doctor appointments to ensure treatments are not missed

Impact

- Negative impact of poor transport on education/employment opportunities for young people
- Negative impact of poor transport on adults on low income/benefits
- Impact on social mobility and isolation due to impact on social interactions

Walking, Cycling and Riding

- Network of safe cycling and walking routes x 8
- Quiet lanes to make county roads better places to cycle and walk
- Improve footpaths x 2 and cycle paths, especially in rural areas
- Separate cycle lanes from busy roads

- Walk to school routes that can be made safer/footpaths near schools are required
- Safe cycling for families and children going to school
- Lack of safe routes for horses/bridleways

Other

- Electrical charging points
- Via van app
- Public slipway onto river Deben
- Environment and transport
- Action to reduce carbon emissions and adapt to climate change and climate emergency
- Air quality
- More access to countryside