

Item :

DC/21/4083/FUL

Full planning permission is sought for the siting of a demountable workshop and three, 40ft containers for storage and parking for the Lions van and parking for 6 cars within the fenced area. This is to be used mainly for storage, maintenance and repairs of the towns Christmas lights by The Lions Club of Felixstowe, but also wider usage and storage to support the other activities undertaken by the charity.

Car Park , Garrison Lane, Felixstowe, IP11 7SH



# Summary

**No statutory, parish or third party objections to the scheme**

The proposal is to be determined at Planning Committee as the landowner is East Suffolk Council.

# Site Location Plan

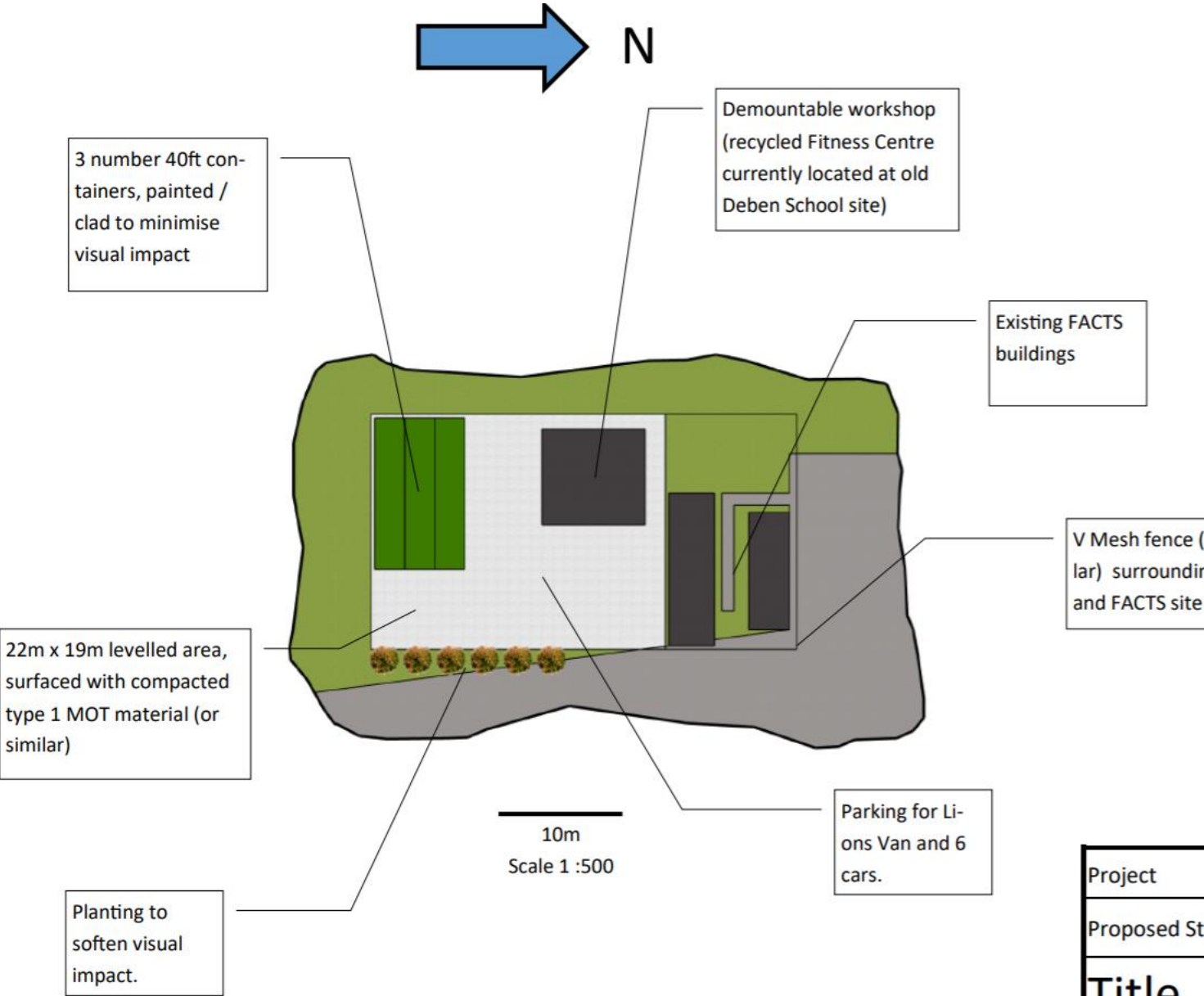


# Aerial Photograph



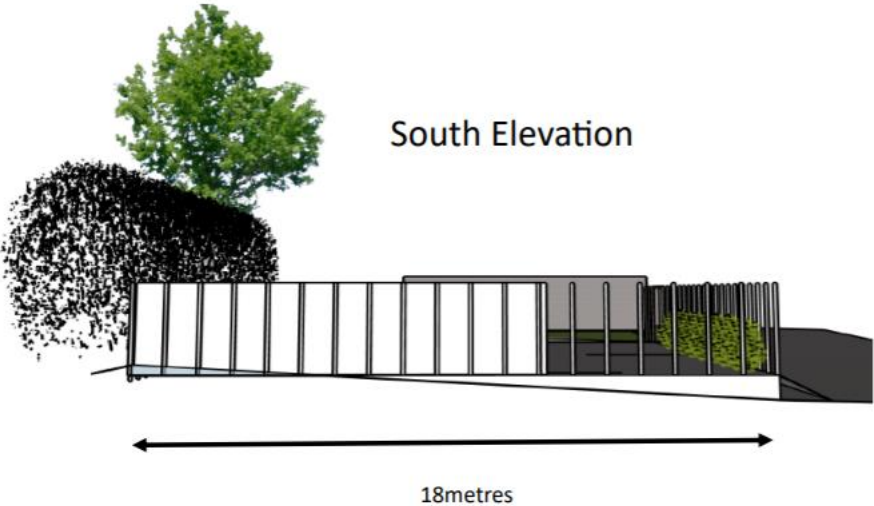


# Block plan

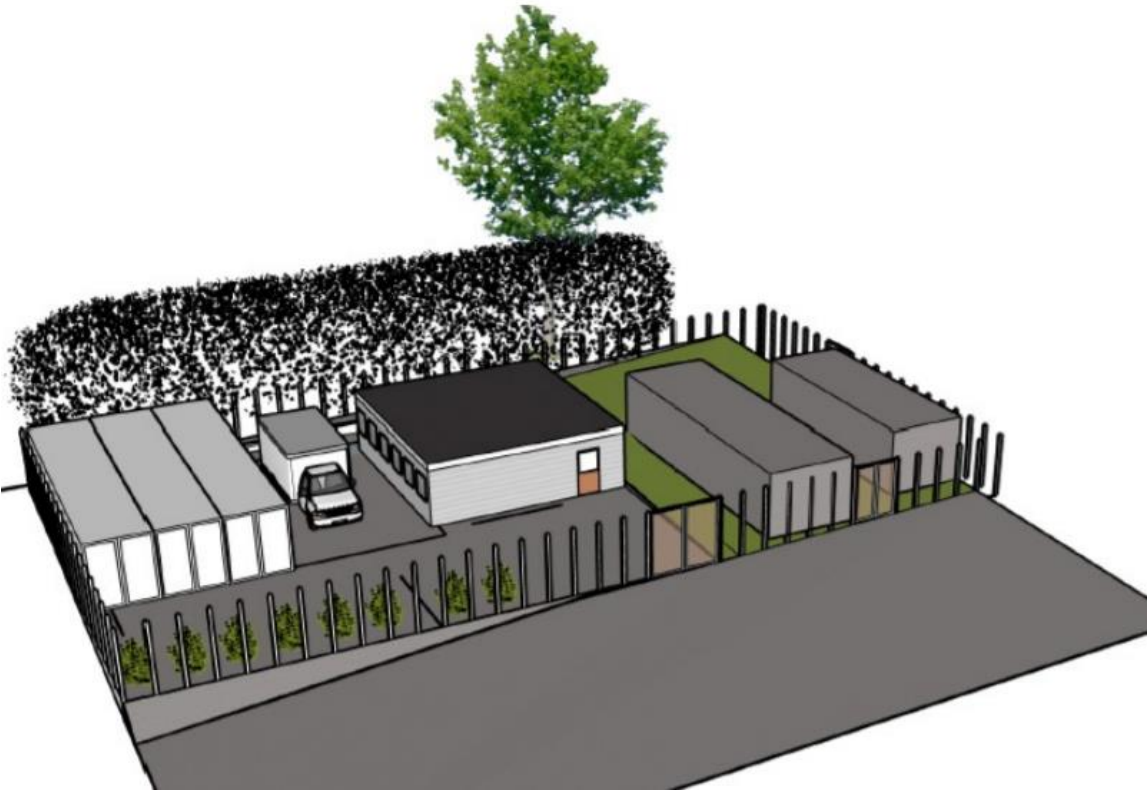
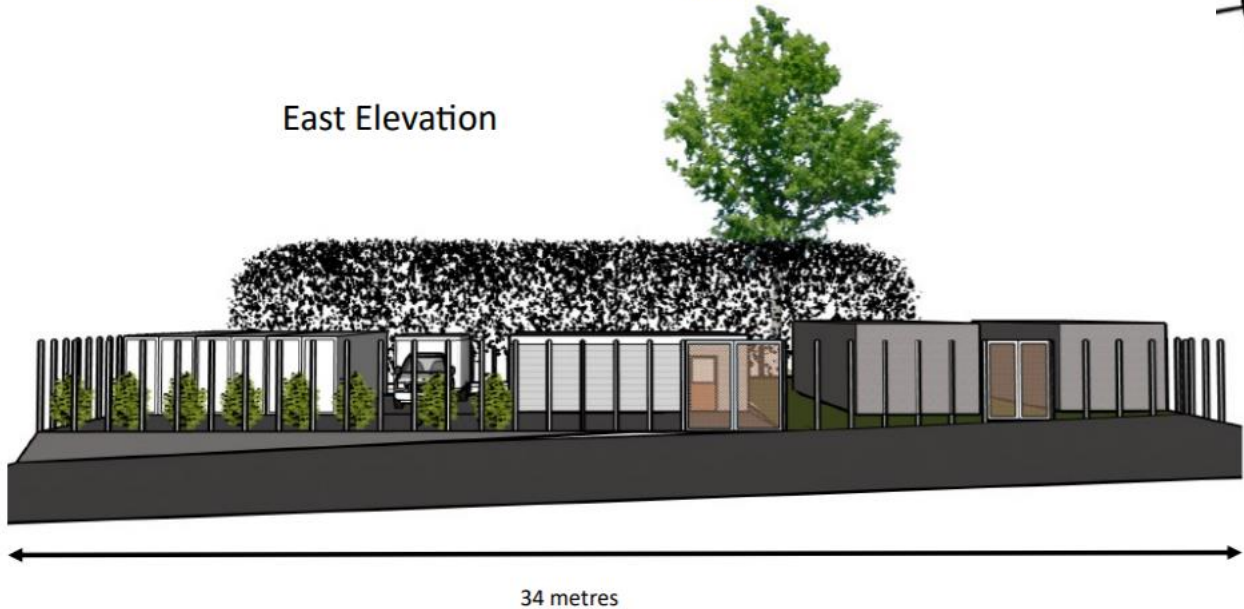


Proposed plan 3d visuals

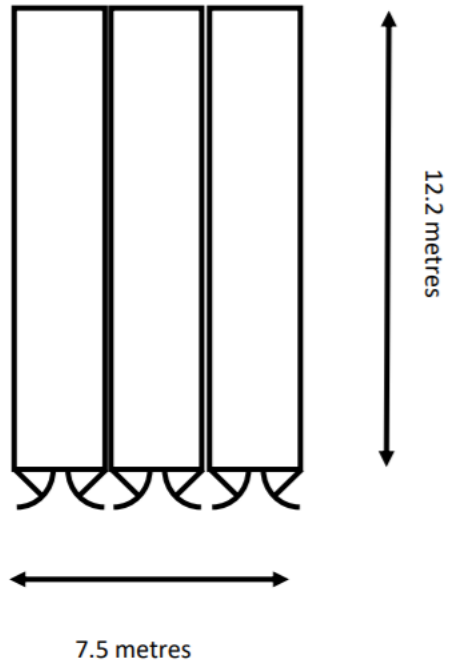
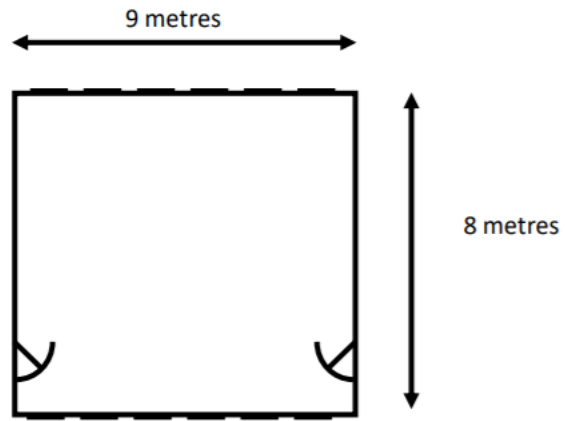
South Elevation



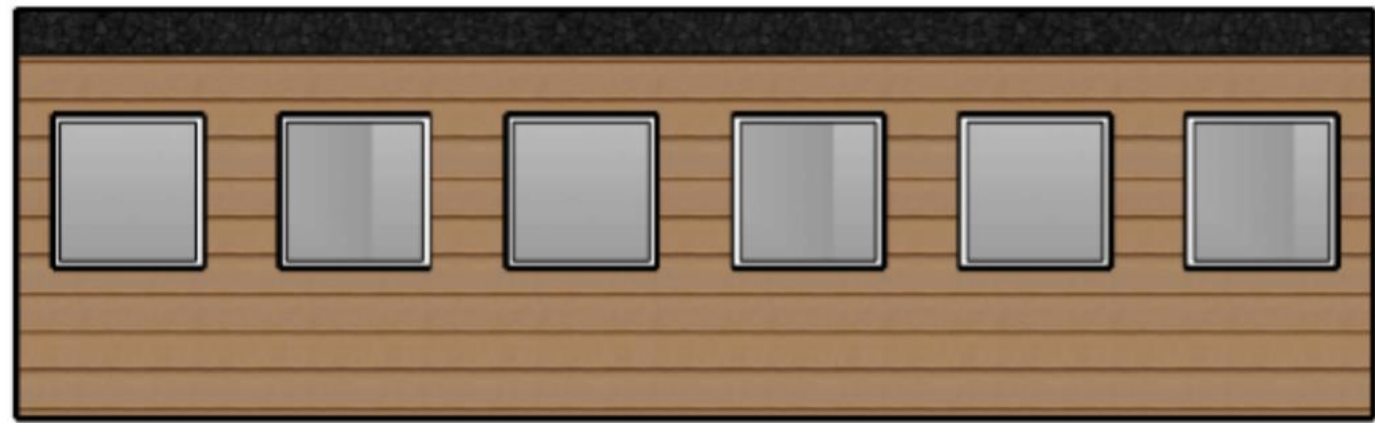
East Elevation



## Proposed plans



Container South & North Elevation



5m



5m



## Photos



View looking north



View looking south





Siting will be to the south of the FACTS buildings



## Demountable unit to be relocated from the former Deben school site



# Recommendation

**Recommend approval subject to conditions**

- **Time limit**
- **Approved plans**