

COASTAL PARTNERSHIP EAST

UPDATE REPORT



INTRODUCTION

Officially launched on 10th June 2016, Coastal Partnership East brings together the coastal management expertise from three local authorities into a single team. The Maritime Local Authorities of Great Yarmouth Borough Council, North Norfolk District Council, and East Suffolk Council face significant, diverse but also common challenges of a dynamic coastline.

Coastal Partnership East is responsible for 92km of the 173km of coastline in Norfolk and Suffolk, from Holkham in North Norfolk to Landguard Point in Felixstowe. There are approximately 352,000 people who live in the direct coastal zone and many more that work on and visit our coast.

The Norfolk and Suffolk coast is of recreational, environmental, economic and cultural importance but it is also home to industry (energy, ports and logistics, digital, food and drink and creative sector) agriculture and tourism. In addition, there are a large number of second and holiday homes situated in our coastal towns and villages.

Responding proactively to this situation, the three councils covering most of the Norfolk and Suffolk coast agreed to a partnership model to address these jointly shared issues. The partnership enables resources to be managed more effectively and with a higher degree of efficiency resulting in more positive and sustainable outcomes for our communities in the long-term.

OUR COAST

DELIVERING VALUE FOR MONEY

DEVELOPING OUR INNOVATIVE PROCUREMENT AND PARTNERSHIP APPROACHES

Between 2021 and 2027, Coastal Partnership East has a capital programme that consists of 25 projects with an estimated cost of £190m. This includes delivering the £67M Lowestoft Flood Risk Management Project and the new £8.4M Norfolk and Suffolk Coast Transition Programme following our successful Defra Innovative Resilience Fund bid.

To deliver these projects well over this 6-year period, we need to establish the most flexible mechanisms for procuring the expertise and resource needed in addition to our existing Dynamic Purchasing System, particularly for the larger and more complex projects. Our ability to deliver this programme to time and budget will be critical in maximising available funds for our most at-risk coastal communities in an increasingly challenging economic climate as well as enhancing our reputation with the funding bodies. To do this well, we have considered our expanding resource and procurement needs.

In June we shared the options with our Operational Officer Group and Board and recommended that we better utilise the existing SCAPE framework, already in use at North Norfolk District Council, East Suffolk Council and Great Yarmouth Borough Council, alongside our existing Dynamic Purchasing System. We aim to make better use of the capital delivery and professional services support it offers - notably with Balfour Beatty direct as a potential route for delivering this ambitious capital programme. This approach will also align with a similar approach being taken by the Water Management Alliance (WMA), who represent the Internal Drainage Boards across Norfolk and Suffolk, to build a shared capital programme and a pipeline of schemes. This will generate significant efficiencies and deliver additional socio-economic and environmental outcomes. There are significant benefits to taking this approach as we can build capacity, share resource, and give certainty to the Environment Agency (EA) regarding our ability to spend the Flood Defence Grant in Aid that is available. Our Board fully support the approach and our team are now progressing our ambition to create a Centre of Excellence in the East for our Flood and Coastal Erosion Risk Management work. This will be overseen with our WMA and EA partners through a new Delivery Board. All our existing suppliers will also benefit as we will be able to accelerate our programme and offer opportunities across the sector.



OUR COAST

REPAIRS & MAINTENANCE

Coastal Partnership East is responsible for repairs and maintenance on in excess of 58km coast protection defences along the coastline between Holkham in north Norfolk to Landguard Point in Felixstowe. We maintain structures such as access points, groynes, revetments, promenades, seawalls, beaches and rock armour.

As well as repairs and maintenance, the team carry out regular and important inspections so they understand what condition the structures are in and this informs future coastal management plans. We set out the work required and then appoint and manage the contractors. We also monitor beach levels, health and safety for the public and the conditions of the cliffs. To see our current works please visit [our website](#)

Total length of linear defences managed by Coastal Partnership East **58km**



Total number of assets managed by Coastal Partnership East **959**



CROMER



the promenade. The scheme is currently in the design phase and works are programmed to commence in quarter two of 2022 and will last 12 to 18 months.

Coastal Partnership East, on behalf of North Norfolk District Council, have contracted Mott Macdonald to complete the detailed design works for the Cromer Phase 2 Scheme.

This will include a rock revetment, west of the pier for approximately 300m to aid in the reduction of scour of the existing seawalls. Remedial works to a number of the timber groynes and aids to navigations as well as protection from scour to a small area along

We have created a local liaison group with the key stakeholders. The first meeting took place late July 2021, with the second local liaison group meeting planned to take place in November 2021. There are further local liaison group meetings planned to take place at key dates within the scheme. There is a website under development which will be updated with all relevant information as well as a newsletter that will be distributed at key milestones. Once the scheme is in the construction phase, there will be information boards in prominent locations outlining the need for the scheme and what works will be completed.

OUR COAST

MUNDESLEY

Coastal Partnership East, on behalf of North Norfolk District Council, have contracted Mott Macdonald to complete the detailed design works for the Mundesley Coastal Management Scheme.

This will consist of a rock revetment to the west which will protect the properties and holiday site on the cliff top. Remedial works to a number of the timber groynes and aids to navigation as well as protection from scour to a small area along the promenade. On the east promenade of Mundesley we are planning on completing improvement works to the promenade to make it accessible for all, this also includes widening a small area to ensure we are able to get machinery of the beach for any future repair and maintenance works. The scheme is currently in the design phase and works are programmed to commence in quarter two of 2022 and will last 12 to 18 months.

We have created a local liaison group with the key stakeholders. The first meeting took place late July 2021, with the second local liaison group meeting planned to take place in November 2021. There are further local liaison group meetings planned to take place at key dates within the scheme.

There is a website under development which will be updated with all relevant information and a newsletter will be distributed at key milestones. Once the scheme is in the construction phase, there will be information boards in prominent locations outlining the need for the scheme and what works will be completed.

HEMSBY

The coastline from Winterton to Great Yarmouth consists of sand and silt and has been subject to change for thousands of years. We commissioned Jacobs to provide an understanding of how and why the coast is changing and to develop designs for a rock berm to help slow the erosion at Hemsby.

After an initial consultation with the community and local community groups a preferred option of a rock berm was chosen. Based on this feedback a summary of the rock berm options was submitted to Great Yarmouth Borough Council's Environment Committee.

The planning application to Great Yarmouth Borough Council and marine licence application to the Marine Management Organisation for the rock berm were submitted on 1st November. This means that a funding strategy can be developed.



OUR COAST

LOWESTOFT

The [Lowestoft Flood Risk Management Project](#) is about developing a way forward to reduce the risk of flooding from the sea, rivers and extreme rainfall. The project has two elements, protection from fluvial and pluvial flooding along the Kirkley stream and from tidal flooding at Lake Lothing.

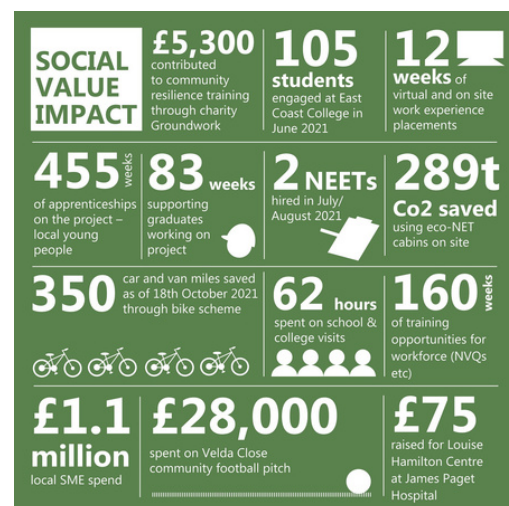
The fluvial and pluvial works have been led by Suffolk County Council and involve the installation of new flood walls and a pumping station at Velda Close. These works were completed in summer 2021. Property Level Resilience (PLR) measures have also been installed in 122 of 123 households. The PLR measures will be installed into the final household shortly. Following final checks, it is anticipated this element of the project will be complete in November 2021.



Construction on package one of the tidal floodwalls officially began in May 2021, with works continuing at a pace along Hamilton Road and Waveney Road. The start of construction on package two of the tidal floodwalls around the Royal Norfolk and Suffolk Yacht Club and South Pier has been delayed due to legal agreements not yet being in place. These works are now expected to start in January 2022 and will be split over two winter seasons, with work stopping in March 2022 and recommencing in October 2022. Work can only take place over the winter months due to the impact construction would have on tourism in the summer.

Work on the concept design of the 40m tidal barrier is now underway which will be completed by the end of the year. The outline and detailed design will then take place next year. As part of the new design a portion of the North tug arm will need to be demolished, which may result in the need for further ground investigations.

In October the project launched a [Virtual Careers Fair](#) at the Norfolk and Suffolk Coast Forum Conference. The careers fair offers young people an unrivalled opportunity to explore routes into civil engineering, from higher education to apprenticeships, and find out about opportunities local to the region. In the first seven days the fair was accessed by 124 times, with a session duration of 11 minutes – much longer than the norm. Further community engagement activities have also taken place, including work placements, apprenticeships, and the hiring of two NEETs. An overview of activities can be seen in the below infographic.



OUR COAST

PAKEFIELD



The recent erosion seen at Pakefield since 2019 has exceeded all predictions. There are now four clifftop properties South of Arbor Lane that are at risk of being lost to erosion in the near future and the caravan park have already rolled back static vans and lost concrete bases. To fully understand the future risks and look at possible management options for the frontage, Coastal Partnership East, on behalf of East Suffolk Council, have contracted Mott McDonald to assist in the development of short and longer-term solutions, reviewing the Shoreline Management Plan, and developing an options appraisal study, leading to a preferred option, outline design, planning and short form business case for Pakefield. In a bid to protect the southern end of the frontage whilst this takes place, emergency temporary works have been granted funding by a private/public partnership of Pathfinder funds, councillor grants and contributions from local business owners and private individuals. This was given permission to buy property owners some time over the winter, whilst the options appraisal was carried out, however, the study has shown that any scheme would not be in construction until 2025 and the temporary measure cannot be guaranteed to hold up under weather and tidal events.



We created a [virtual room](#) to share information with the community and are currently asking for their views on what they value about Pakefield. We held a drop-in event in Pakefield Church Hall to bring the virtual room to the community, which was well attended. The Community Steering Group have started to hold further community engagement events to raise awareness and discuss fundraising, we will continue to work closely with the community to build resilience and explore adaptation options.

OUR COAST

SOUTHWOLD



The Southwold to Walberswick Flood and Coast Board was set up in February 2021 and members include: Coastal Partnership East, East Suffolk Council, Suffolk County Council, the Environment Agency, Natural England, Southwold Town Council, Reydon Parish Council, Walberswick Parish Council, Blyth Estuary Partnership, Southwold and Reydon Society, and local landowners.

The Board will take a strategic overview of coastal protection and flood prevention projects from Easton Broad in the North, to Westwood Marshes in the South and the A12 in the West, and review plans and provide guidance/ recommendation and support for protection where possible and resilience where unaffordable or unsustainable.

The Board will seek to:

- Integrate coastal protection plans in different areas and from different agencies on the Southwold to Walberswick coast.
- Interrogate monitoring and data provided by responsible agencies for erosion and flooding events.
- Receive updates around predictions from the responsible agencies for future events and possible options for resilience.
- Evaluate the risk and cost of such a future event to the community.
- Investigate funding for these plans.
- Work with responsible agencies and the community to devise resilience measures if the funding is not available
- Review plans from the responsible agencies to create a forward-looking response to sea level rise and climate change locally in the ranges of 10, 20, 50, 100 and 200 years.



OUR COAST

NORFOLK & SUFFOLK COAST & ESTUARY CONFERENCE

Since the start of the global pandemic in early 2020 how we engage our communities, keep them involved in and informed of our work on the coast and continue to make good progress, has been challenging. Coastal Partnership East reacted swiftly to that challenge and chose to invest time into researching appropriate virtual platforms to enable that engagement to continue. Since April 2020 communities along the Norfolk and Suffolk coast have found themselves still able to play a full part in shaping developments on the coast and to have their voices heard and changes made as a result of their contributions.

This technology paid additional dividends in reaching age groups which have been previously difficult to fully engage, as well as returning figures that demonstrated more people were engaging with our work. In short, we were reaching more people from a wider demographic with greater success.

With many industries still choosing to host conferences virtually, despite the easing of restrictions, it therefore seemed sensible to make use of the knowledge we had gained in virtual engagement, in the delivery of the first Norfolk and Suffolk Coast Forum coastal and estuarine conference. Not only was this the inaugural conference of both forums but was the first with the Anglian (Eastern) Regional Flood and Coastal Committee as a partner.

The additional challenge was also to view how we might better engage with students across Norfolk and Suffolk, encouraging the next generation of those wanting to work on our coast.

Additionally, having never hosted a virtual conference previously, we were unsure whether we could attract the level of sponsorship required to 'build' an event that would provide return for investment to both delegate and sponsor.

With agreement from both Forums, the conference theme was set to reflect the FCERM 2050 strategy, working with people, nature and science to develop climate resilient coasts and estuaries.

288 people joined the conference on the day.



OUR COAST

NORFOLK & SUFFOLK COAST TRANSITION PROGRAMME

The Norfolk & Suffolk Coast Transition Programme developed by Coastal Partnership East is one of 25 projects across England that has been awarded funding by Defra to develop innovative solutions to flood and coastal resilience in their communities.

Norfolk and Suffolk have some of the fastest eroding coasts in Europe, with over 2500 homes at direct erosion risk and thousands more properties and businesses directly and indirectly affected by loss of property, infrastructure and utilities within the lifetime of the Shoreline Management Plan. Recent national reports and enquiries have recommended that more is done to support coastal adaptation and resilience including the Climate Change Committee report to Government this June (2021). The framework for transitioning our coast is now in place. Our Innovative Resilience Fund proposal seeks to implement an ambitious resilience programme for the Norfolk and Suffolk coast, that delivers real adaptation and resilience options for our communities. Our proposal offers a complete suite of planning, engagement, technical, financial and policy tools to support coastal transition for Norfolk and Suffolk communities, which could be applied to the rest of the UK coast. We have already established mechanisms to physically roll back homes, relocate properties and have examples of where this has been successful. The next step is to roll this out further with pilot communities and explore mechanisms to self-finance future solutions of this kind. In our four pilot locations of Thorpeness, Great Yarmouth, Hemsby and Trimingham, we already have strong partnerships in place with communities, businesses and partners. Of the four pilot areas, three places have been selected as being at high risk to erosion these are Hemsby, Trimingham and Thorpeness with a total of 298 homes at erosion risk in the next 50-100 years, a further 200+ non-residential properties and business premises and in all locations a key road, utilities or community and heritage assets such as a church or village hall are also at risk.

The map below shows the study area including our pilot places:

- Trimingham, Norfolk
- Hemsby, Norfolk
- Great Yarmouth, Norfolk
- Thorpeness, Suffolk

Learning and good practice will also be shared with 'twin' communities such as:

- Walcott, Norfolk
- Corton, Suffolk
- Gunton, Suffolk
- Pakefield, Suffolk



OUR TEAM

MEET THE BOARD

Our Board is responsible for providing strategic direction for and champions the partnership. It ensures the effective and equitable delivery of coastal management services across the Partnership area, agrees the overall work programme, and facilitates appropriate resources. The Board does not have decision making powers; it makes recommendations to each partner authority.



Cllr Penny Carpenter
Chairman (in rotation) CPE,
Chairman Environment Committee
Great Yarmouth Borough Council



Cllr Angie Fitch-Tillett
Cabinet Member for
Coastal Management
North Norfolk District Council



Cllr David Ritchie
Cabinet Member for Planning
and Coastal Management
East Suffolk Council



Cllr James Bensly
East Flegg Ward Councillor
Vice Chairman
Environment Committee
Great Yarmouth Borough Council



Cllr Dr Clive Stockton
District Councillor
for Bacton Ward
North Norfolk District Council



Cllr James Mallinder
Cabinet Member for
the Environment
East Suffolk Council

Our Operational Officer Group (OOG) provides operational guidance and considers staffing matters. The OOG supports the functions of the Board.



Jane Beck
Head of Property and
Asset Management
Great Yarmouth Borough Council



Steve Blatch
Chief Executive
North Norfolk
District Council



Nick Khan
Strategic Director
East Suffolk Council



Philip Ridley
Head of Planning and
Coastal Management
East Suffolk Council

OUR TEAM

MEET THE TEAM



Karen Thomas
Head of Coastal
Partnership East



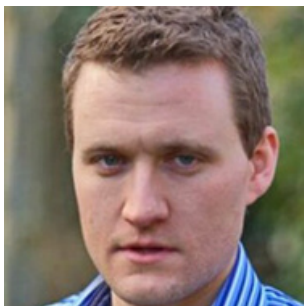
Sharon Bleese
Coastal Manager
(South)



Rob Goodliffe
Coastal Manager
(North)



Tamzen Pope
Coastal Engineering
Manager



Paul Mackie
Coastal Strategic
Funding Manager



Paul Patterson
Senior Coastal
Engineer



Brian Farrow
Coastal Engineer



Madeline Fallon
Senior Coastal
Advisor South



Thomas Yeung
Senior Technical
Funding Officer



Sharon Richardson
Senior Partnerships &
Engagement Advisor



Keith Roper
Coastal Officer
(Repairs & Maintenance)



Anne Casey
Coastal Adaptation
Officer



Tom Chalker
Funding Officer



Warren Hoskins-Davies
Coastal Engineering
Assistant



Charlotte Flight
Engagement Officer



Fiona Keenaghan
Assistant Coastal
Engineer

OUR TEAM

MEET THE TEAM



Thomas Walker
Coastal Management
Technical Support
Officer



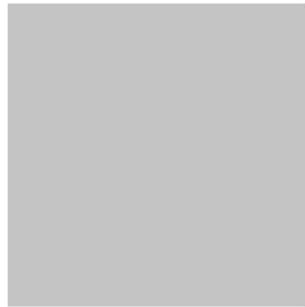
Isobel Steen
Coastal Projects
Coordinator



Alysha Stockman
Partnerships &
Engagement
Support Officer



Thomas Hayden
Coastal Engineering
Support Officer



Chloe Bragg
Funding & Strategy
Research Admin
Apprentice



Sophie Day
Senior Research
Associate on
secondment

CONTACT US



coastalmanagement@eastsoffolk.gov.uk



www.coasteast.org.uk



[@CPE_NandS](https://twitter.com/CPE_NandS)



[Coastal Partnership East](https://www.linkedin.com/company/coastal-partnership-east)



[@CPENandS](https://www.facebook.com/CPENandS)



[@cpe_nands](https://www.instagram.com/cpe_nands)