

Item: 9

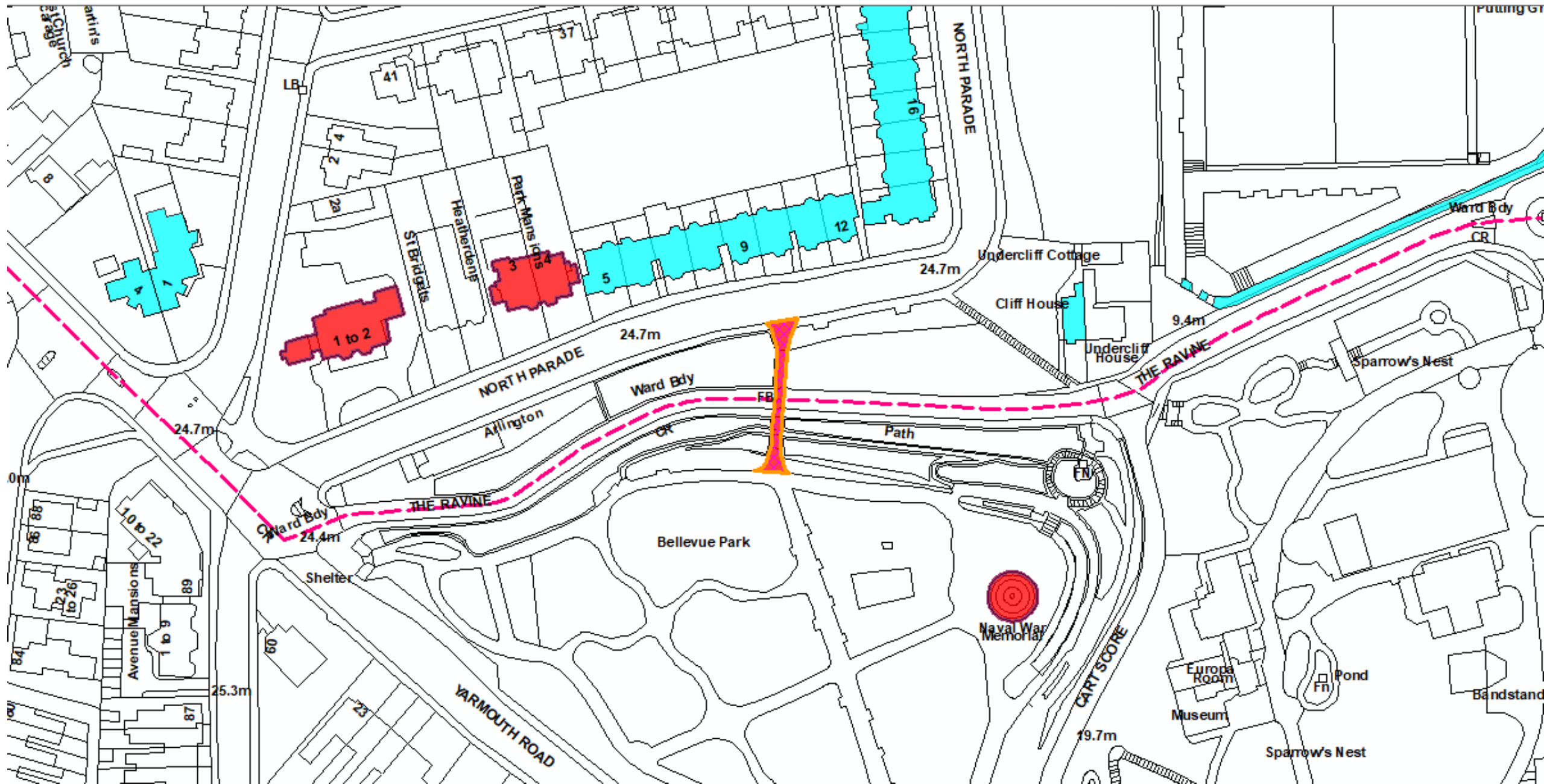
DC/21/5574/LBC

Repair & Refurbishment of Existing Pedestrian
Bridge

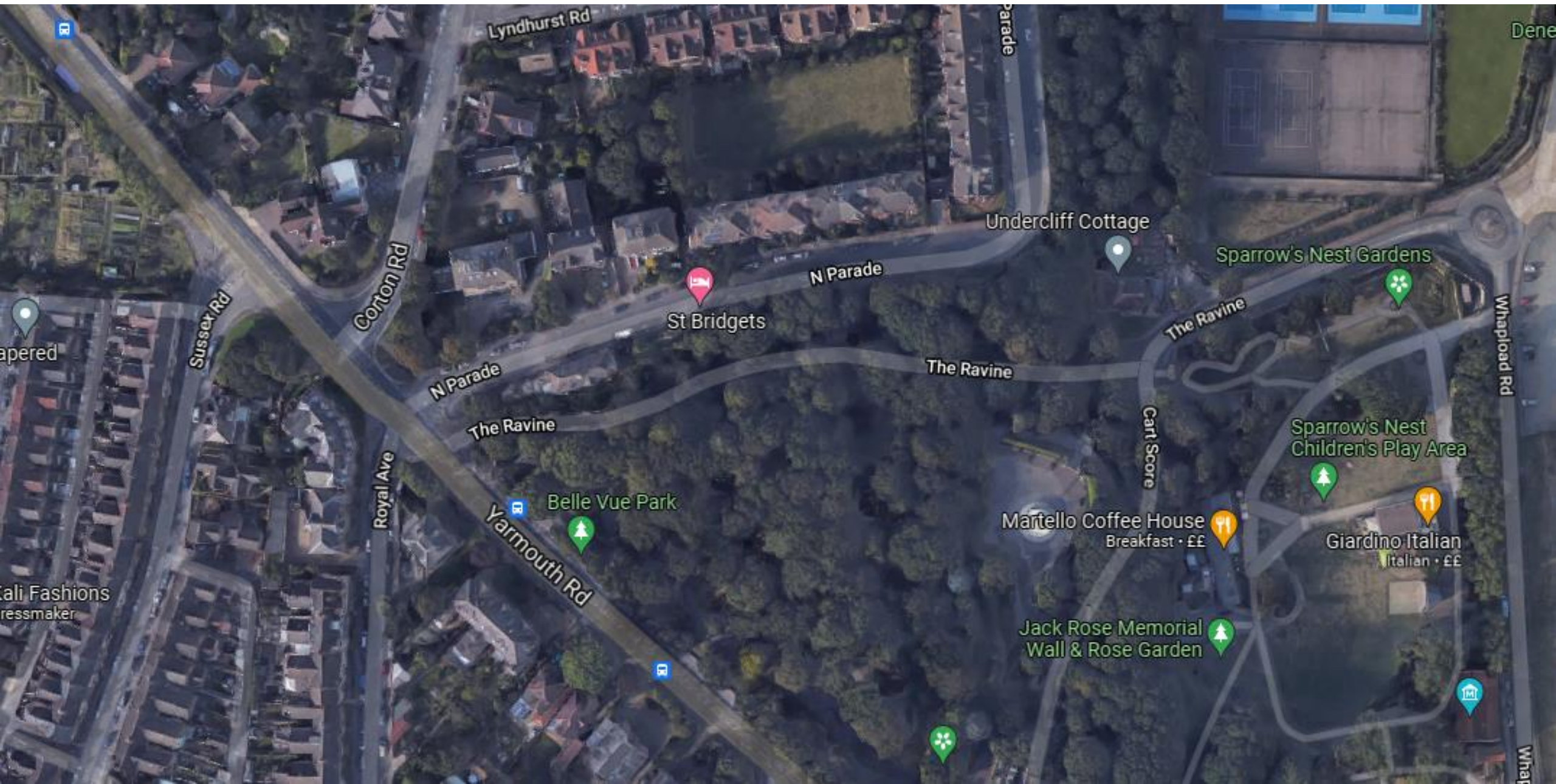
Jubilee Bridge, The Ravine, Lowestoft, Suffolk



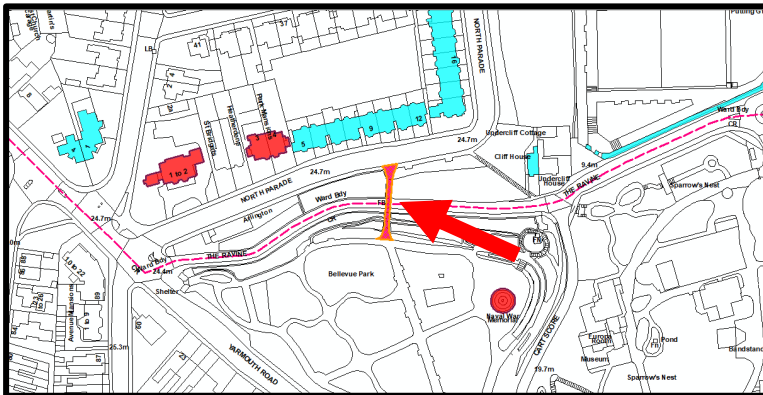
Site Location Plan



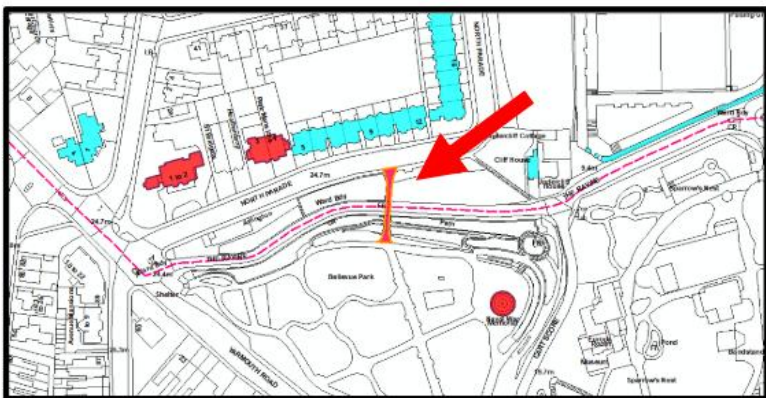
Aerial Photograph



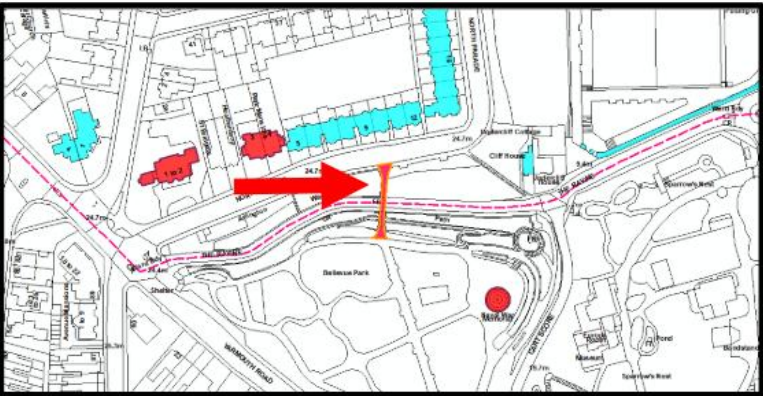
Photographs – c1910



Photographs



Photographs



Photographs – Current Condition



WROUGHT IRON ANGLE SECTION
BRIDGE BEAM BOTTOM FLANGE
LATERAL RESTRAINT MEMBERS.

BRIDGE PLAN BRACING
MEMBERS COMPRISING MILD
STEEL RODS WITH THREADED
ENDS FOR TENSIONING.

WROUGHT IRON FLAT BAR
CROSSED DIAGONAL BRACING
(VERTICAL ORIENTATION) TO
ENDS OF BRIDGE.

WROUGHT IRON FLAT BAR
CROSSED DIAGONAL BRACING
BETWEEN BRIDGE BEAM
BEARING POINTS.

BRICKWORK BRIDGE ABUTMENT

GENERAL VIEW OF SOUTHERN BRIDGE ABUTMENT
SHOWING ARRANGEMENT OF WROUGHT IRON
VERTICAL AND PLAN BRACING MEMBERS



WROUGHT IRON ANGLE SECTION
PRINCIPAL BRIDGE BEAM
BOTTOM FLANGE LATERAL
RESTRAINT MEMBERS.

BRIDGE PLAN BRACING
MEMBERS COMPRISING MILD
STEEL RODS WITH THREADED
ENDS FOR TENSIONING.

FABRICATED MILD STEEL PLAN
BRACING CONNECTORS ALLOW
TENSIONING OF THE BRACING
ROD MEMBERS.

CORRUGATED UNDERSIDE TO
EXISTING CONCRETE BRIDGE
DECK

GENERAL VIEW OF UNDERSIDE OF BRIDGE DECK
SHOWING PLAN BRACING MEMBER ARRANGEMENT

Photographs – Current Condition



STRUCTURAL TEE-SECTION CROSS-BEAMS PROVIDING HORIZONTAL TIE BETWEEN WROUGHT IRON BUILT-UP PRINCIPAL BRIDGE BEAMS.

WROUGHT IRON ANGLE SECTION PRINCIPAL BRIDGE BEAM BOTTOM FLANGE LATERAL RESTRAINT MEMBERS.

WROUGHT IRON BUILT-UP AND RIVETED PRINCIPAL BRIDGE BEAMS.

BRIDGE PLAN BRACING MEMBERS COMPRISING MILD STEEL RODS WITH THREADED ENDS FOR TENSIONING.

GENERAL VIEW OF UNDERSIDE OF BRIDGE DECK SHOWING PLAN BRACING MEMBER ARRANGEMENT AND BOTTOM FLANGE RESTRAINTS TO PRINCIPAL BRIDGE BEAMS

Photographs – Current Condition



SEVERELY CORRODED AND DELAMINATED WROUGHT IRON ANGLE SECTION CROSS-MEMBERS. TO BE REPLACED WITH NEW FABRICATED S275J0 MILD STEEL MEMBERS TO MATCH SIZE AND GEOMETRY OF ORIGINAL MEMBERS WITH NEW END FIXINGS.

SEVERELY CORRODED AND DELAMINATED WROUGHT IRON FLAT BAR CROSSED DIAGONAL BRACING MEMBERS. TO BE REMOVED AND REPLACED WITH NEW FABRICATED S275J0 MILD STEEL MEMBERS TO MATCH SIZE AND GEOMETRY OF ORIGINAL MEMBERS WITH NEW END FIXINGS.



SEVERELY CORRODED AND DELAMINATED WROUGHT IRON FLAT BAR CROSSED DIAGONAL BRACING MEMBERS. TO BE REMOVED AND REPLACED WITH NEW FABRICATED S275J0 MILD STEEL MEMBERS TO MATCH SIZE AND GEOMETRY OF ORIGINAL MEMBERS WITH NEW END FIXINGS.

SEVERELY CORRODED PLAN BRACING ROD MEMBERS SHOWING SIGNIFICANT NECKING TO ENDS OF MEMBERS. TO BE REMOVED AND REPLACED WITH NEW FABRICATED S275J0 MILD STEEL MEMBERS TO MATCH SIZE AND GEOMETRY OF ORIGINAL MEMBERS WITH NEW END FIXINGS.

SEVERELY CORRODED AND DELAMINATION WROUGHT IRON PLAN BRACING TO PRINCIPAL BRIDGE BEAM CONNECTION PLATE. TO BE REMOVED AND REPLACED WITH NEW FABRICATED S275J0 MILD STEEL MEMBERS TO MATCH SIZE AND GEOMETRY OF ORIGINAL MEMBERS WITH NEW END FIXINGS.



SEVERELY CORRODED AND DELAMINATED WROUGHT IRON FLAT BAR CROSSED DIAGONAL BRACING MEMBERS. TO BE REMOVED AND REPLACED WITH NEW FABRICATED S275J0 MILD STEEL MEMBERS TO MATCH SIZE AND GEOMETRY OF ORIGINAL MEMBERS WITH NEW END FIXINGS.

SEVERELY CORRODED PLAN BRACING ROD MEMBERS SHOWING SIGNIFICANT NECKING TO ENDS OF MEMBERS. TO BE REMOVED AND REPLACED WITH NEW FABRICATED S275J0 MILD STEEL MEMBERS TO MATCH SIZE AND GEOMETRY OF ORIGINAL MEMBERS WITH NEW END FIXINGS.

SEVERELY CORRODED AND DELAMINATED WROUGHT IRON PLAN BRACING TO PRINCIPAL BRIDGE BEAM CONNECTION PLATE. TO BE REMOVED AND REPLACED WITH NEW FABRICATED S275J0 MILD STEEL MEMBERS TO MATCH SIZE AND GEOMETRY OF ORIGINAL MEMBERS WITH NEW END FIXINGS.

PHOTOGRAPHS SHOWING SEVERE CORROSION AND DELAMINATION TO VERTICAL AND PLAN BRACING MEMBERS CLOSE TO SOUTHERN BRIDGE ABUTMENT

(SIMILAR LEVELS AND LOCATIONS OF CORROSION PRESENT ADJACENT NORTHERN ABUTMENT)

Photographs – Current Condition



DAMAGED AND DEFECTIVE SURFACE WATER DRAINAGE RAINWATER DOWNPIPES AND CONNECTIONS WITH GULLY POTS ON NORTHERN BRIDGE ABUTMENT

TO BE REPLACED WITH NEW 100mm Ø CAST IRON RAINWATER DOWNPIPES WITH NEW
CONNECTIONS TO NEWLY INSTALLED uPVC GULLY POTS



COMMEMORATIVE CARVED STONE PLACARDS ON SOUTHERN BRIDGE ABUTMENT PIERS

TO BE CLEANED AND RE-PAINTED WITH CARVED LETTERING RE-PAINTED BLUE AS EXISTING
(BELIEVED TO BE SAND-STONE)

Photographs – Current Condition



EXISTING NON-ORIGINAL FABRICATED MILD STEEL LATTICE TYPE HAND RAIL INFILL PANELS (10 No. TOTAL, 5 No. PER SIDE) WITH BOLTED CONNECTIONS WITH SUPPORTING MASONRY BRIDGE ABUTMENTS AND FABRICATED MILD STEEL BALUSTERS. REFER TO DRAWING No. 20223_EX03 FOR DETAILS.

EXISTING NON-ORIGINAL FABRICATED MILD STEEL BALUSTERS SUPPORTING HAND RAIL INFILL PANELS. REFER TO DRAWING No. 20223_EX03 FOR DETAILS.

BOLTED CONNECTIONS (AND SPACER TUBES) SECURING BOTTOM CHORD ANGLE SECTION OF HAND RAIL INFILL PANELS TO CONCRETE BRIDGE DECK TO PROVIDING INTERMEDIATE LATERAL RESTRAINT AND VERTICAL SUPPORT.

WHEN REFURBISHED HAND RAIL PANELS ARE REPLACED PROVIDE NEW GALVANISED M12 Gr 8.8 RESIN ANCHORED FIXINGS (STUD, WASHER, NUTS & SPACERS) SECURED INTO CONCRETE USING HILT HIT-HY 200-A RESIN (OR SIMILAR EQUIVALENT) WITH MINIMUM 100mm EMBEDMENT INTO CONCRETE.



TYPICAL VIEWS SHOWING LEVELS OF SEVERE CORROSION, SECTION LOSS AND PERFORATION TO FABRICATED MILD STEEL HAND RAIL BALUSTER SECTIONS.

ALL 8 No. HAND RAIL BALUSTERS ARE TO BE REPLACED WITH NEW ITEMS FABRICATED IN GRADE S275J0 STEEL AND GALVANISED PRIOR TO PAINTING. REFER TO DETAILING AND SPECIFICATION OF NEW HAND RAIL BALUSTERS ABOVE.

TYPICAL VIEW OF EXISTING NON-ORIGINAL FABRICATED MILD STEEL HAND RAIL INFILL PANELS & BALUSTERS

TYPICAL VIEWS SHOWING SEVERE LEVELS OF CORROSION AND SECTION LOSS PRESENT IN EXISTING FABRICATED MILD STEEL HAND RAIL BALUSTERS

Proposed Works



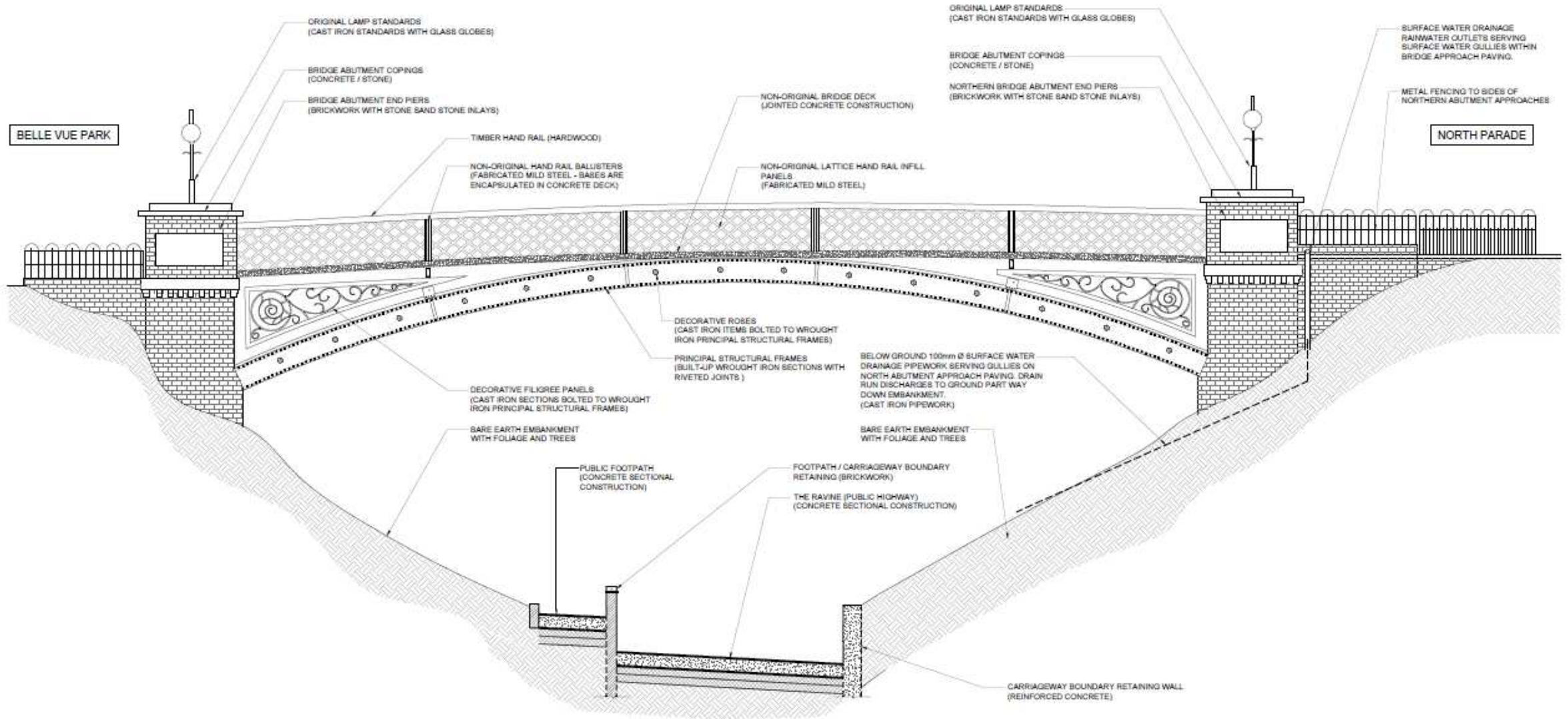
ORIGINAL LANTERNS TO BE RESTORED AND RECOMMISSIONED.
4 No. IN TOTAL, 1 No. PER ABUTMENT PIER.

LOCATION OF ORIGINAL WROUGHT IRON ACCESS GATES TO BE REMOVED, BLAST CLEANED, REPAIRED AND REFITTED.

EXISTING DAMAGED SURFACE DRAINAGE GULLYS TO BE REMOVED AND REPLACED WITH NEW uPVC TRAPPED YARD GULLY POTS WITH GALVANISED STEEL GRATINGS CONNECTED TO NEW RAIN WATER DOWNPIPES.
CONCRETE PAVING TO MADE GOOD TO MATCH EXISTING ONCE GULLIES HAVE BEEN INSTALLED.

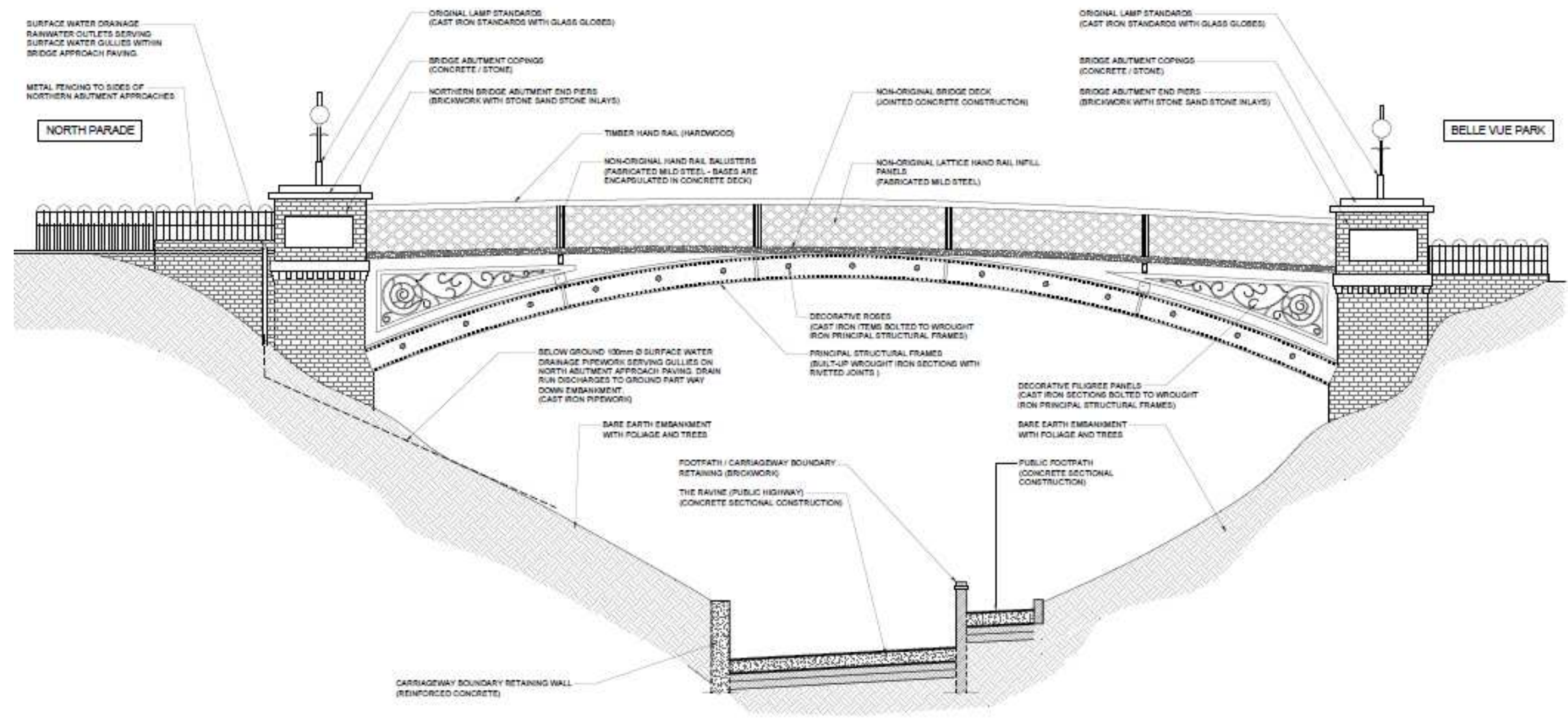
NORTHERN BRIDGE APPROACH FROM NORTH PARADE
SHOWING LOCATION OF ORIGINAL ACCESS GATES

Existing Elevations



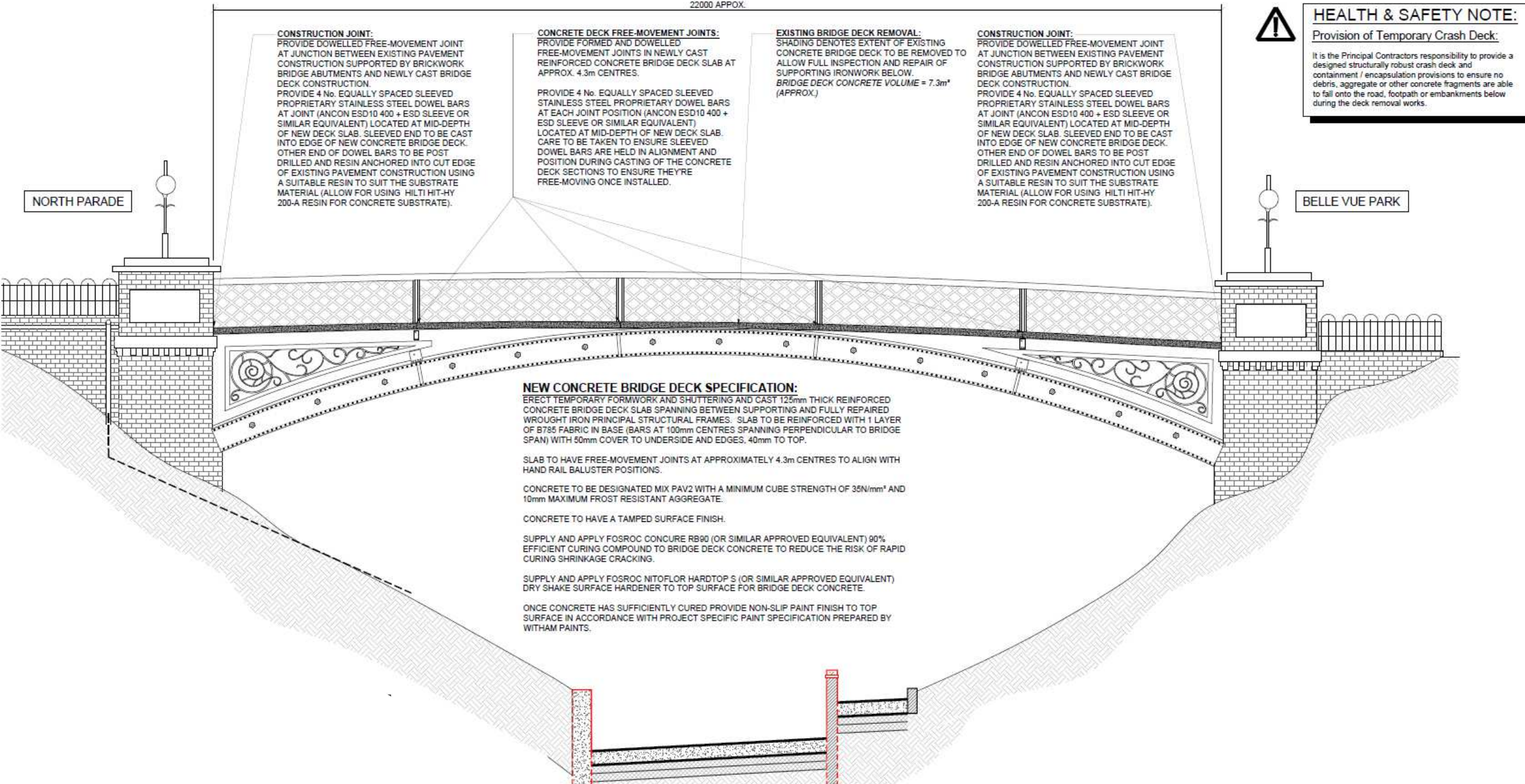
EAST ELEVATION
SCALE 1:50

Existing Elevations

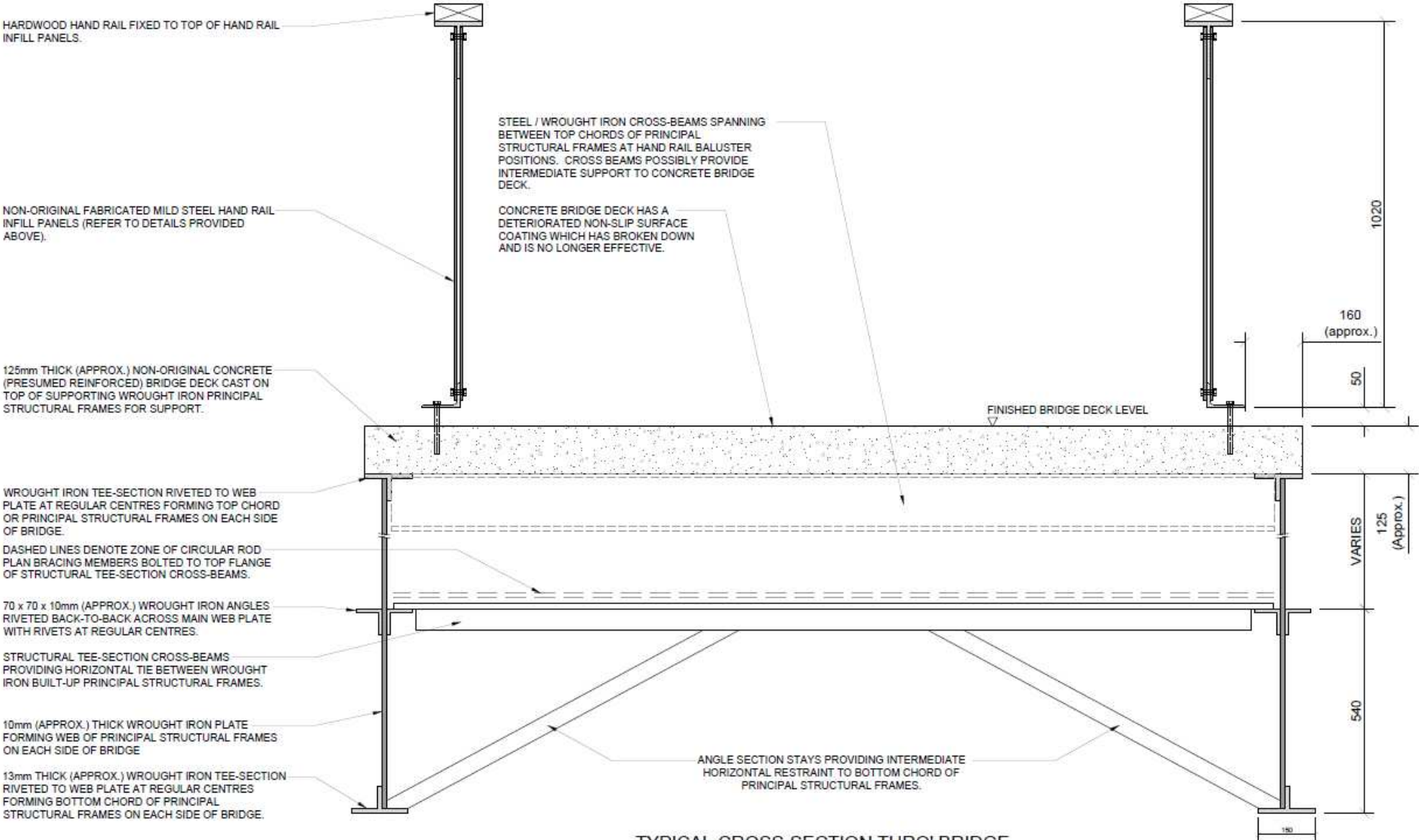


WEST ELEVATION
SCALE 1:50

Proposed Elevations



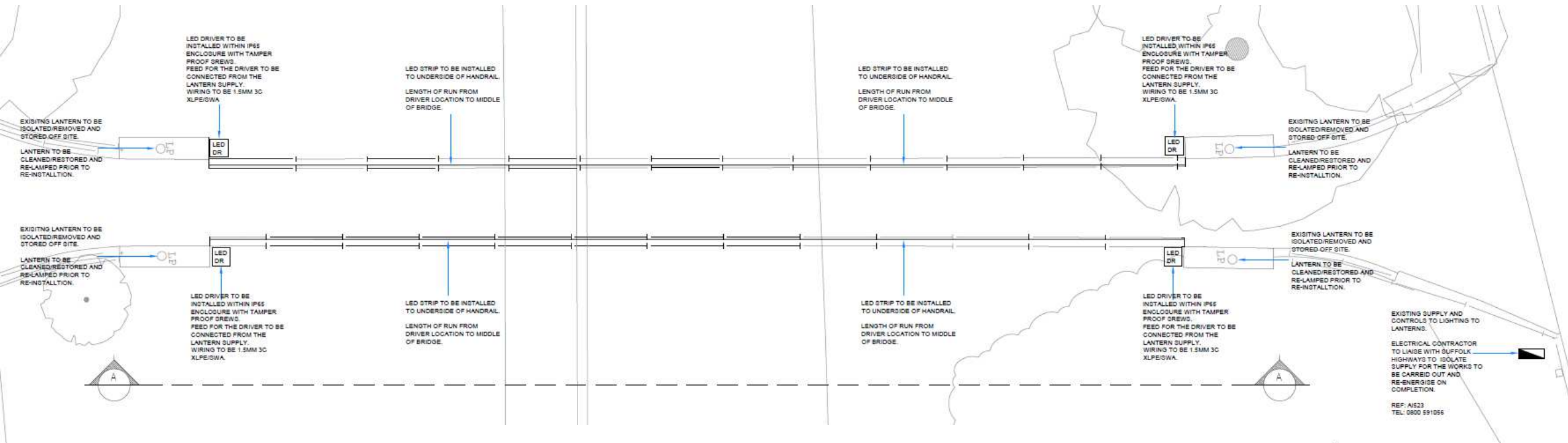
Proposed Cross Section




TYPICAL CROSS-SECTION THRO' BRIDGE
DECK & HAND RAILS

SCALE 1:10

Proposed Lighting



Material Planning Considerations and Key Issues

- Impact on Listed structure
 - Registered Park and Garden
 - North Lowestoft Conservation Area
- 
- A teal-colored decorative shape, resembling a stylized hill or a wave, is positioned in the bottom right corner of the slide.

Recommendation

Recommended for approval subject the conditions as outlined within the report – summarised below, and subject to the submission of an amended drawing to detail the exact location and size of the proposed enclosure:

- **Standard Time limit**
- **Approved Plans**
- **Colour details**
- **Details of proposed rail replacements**

(As per Page 186 - 187 of the report)



Slides from Objector







Slides from Ward Member



