



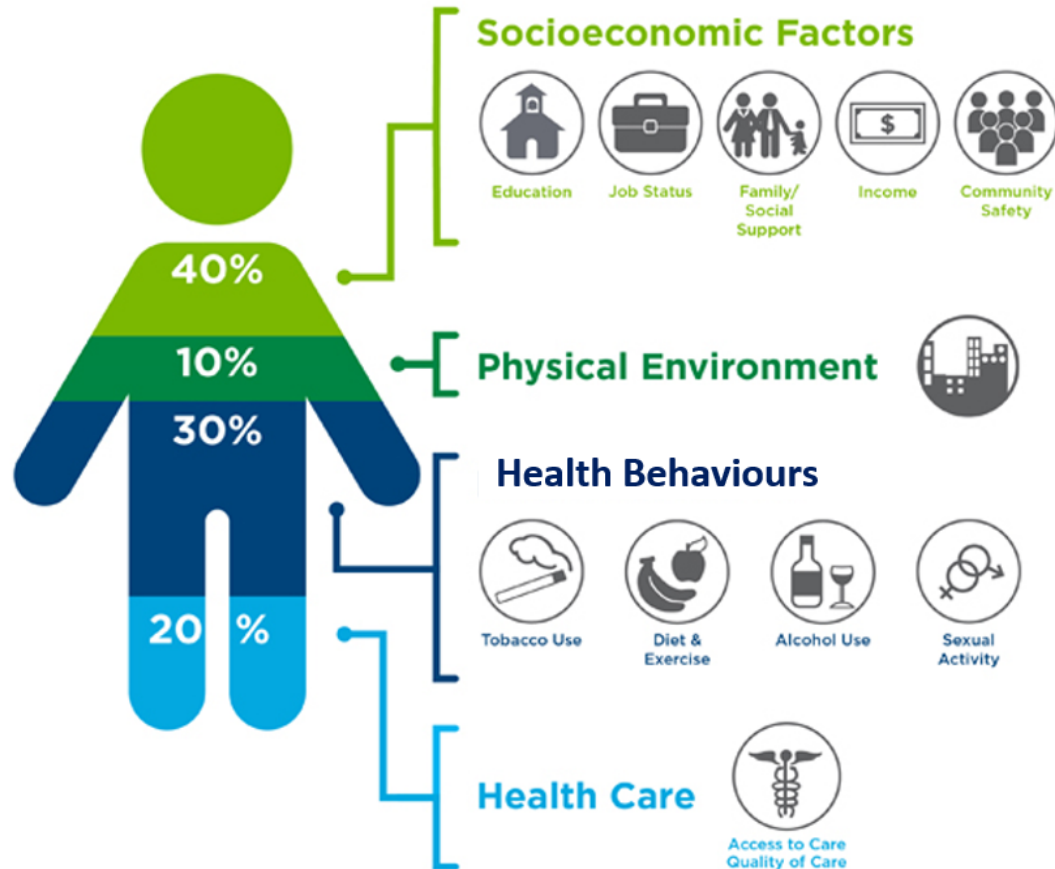
East Suffolk  
**Marmot**  
**Place**

# Marmot Review



- In late 2008, Professor Sir Michael Marmot was asked to chair an independent review to propose evidence-based strategies for reducing health inequalities
- In 2010 'Fair Society, Healthy Lives' was published
- Six principles (now developed / expanded to eight principles)
- In 2020 'The Marmot Review 10 Years On' was published
- Lives Cut Short was published in 2024

# The 'building blocks' of health



- Our health outcomes depend on a range of different things
- Only 20% of our health is down to our access to, and the quality of, health care
- 80% is down to 'wider' or 'social' determinants of health – also known as the 'building blocks' of health



# Why does this matter?

- Inequality is a persistent and growing issue, particularly over the last decade, and was exacerbated by the COVID-19 pandemic
- After a century of improving outcomes, we face stagnation and, in many areas, poorer outcomes
- Inequalities are widening within and between communities
- Life expectancy is stalling across the country and for the poorest 10% of women in England, it has declined



# Why become a Marmot Place?



- Household income has grown by 22% for the richest 10% of families in the past 20 years, compared to 8% for the poorest 10%
- Men's healthy life expectancy increases 4.3 years on average for every 10% increase in the employment rate where they live
- Three times as many people die by age 60 in the most deprived areas compared to the least deprived areas
- In deprived neighbourhoods only 4% of people live in areas with a lot of green space
- 36% of children with more than 10% absence get English and Maths GCSEs – compared to 85% with no absences
- Young people with a degree earn 58% more p/hour than those with no/low qualifications
- 1 in 5 people live in private rented homes that are non-decent (1 in 10 social rented)
- 1 in 4 children in the private rented sector move home three+ times by the age of 15

# Why East Suffolk?



- More than 30,000 East Suffolk residents live in Core20 areas – the most deprived 20% of the population nationally – mainly in Lowestoft
- Lots of East Suffolk jobs are insecure, low wage and/or zero hours
- Children leaving care have much worse outcomes than their peers
- People in some areas of East Suffolk live ten years less than neighbours a few miles away (and fewer of these years in good health)
- Half of all households in poverty include someone with a disability
- Many residents are still struggling with the cost of living
- Things are getting worse, not better, and frustration and disempowerment is impacting on cohesion and leading to an increasing focus on ‘otherness’

# ...but aren't we already 'Tackling Inequalities?'



- Yes...but the dial isn't shifting quickly enough.
- What we are doing isn't having enough impact, so it needs senior level, multi-agency focus and greater attention
- We need to move away from short-term funding for one-off projects and 'pilots'
- Collectively we are not investing enough time and money in prevention – our resources are aimed at the crisis/critical end of the spectrum
- Perfect timing to influence design of services as we move through LGR



# Marmot Place Principles



Give every child the best start in life.



Enable all children, young people and adults to maximise their capabilities and have control over their lives.



Create fair employment and good work for all.



Ensure a healthy standard of living for all.



Create and develop healthy and sustainable places and communities.



Strengthen the role and impact of ill health prevention.



Tackle racism, discrimination and their outcomes.

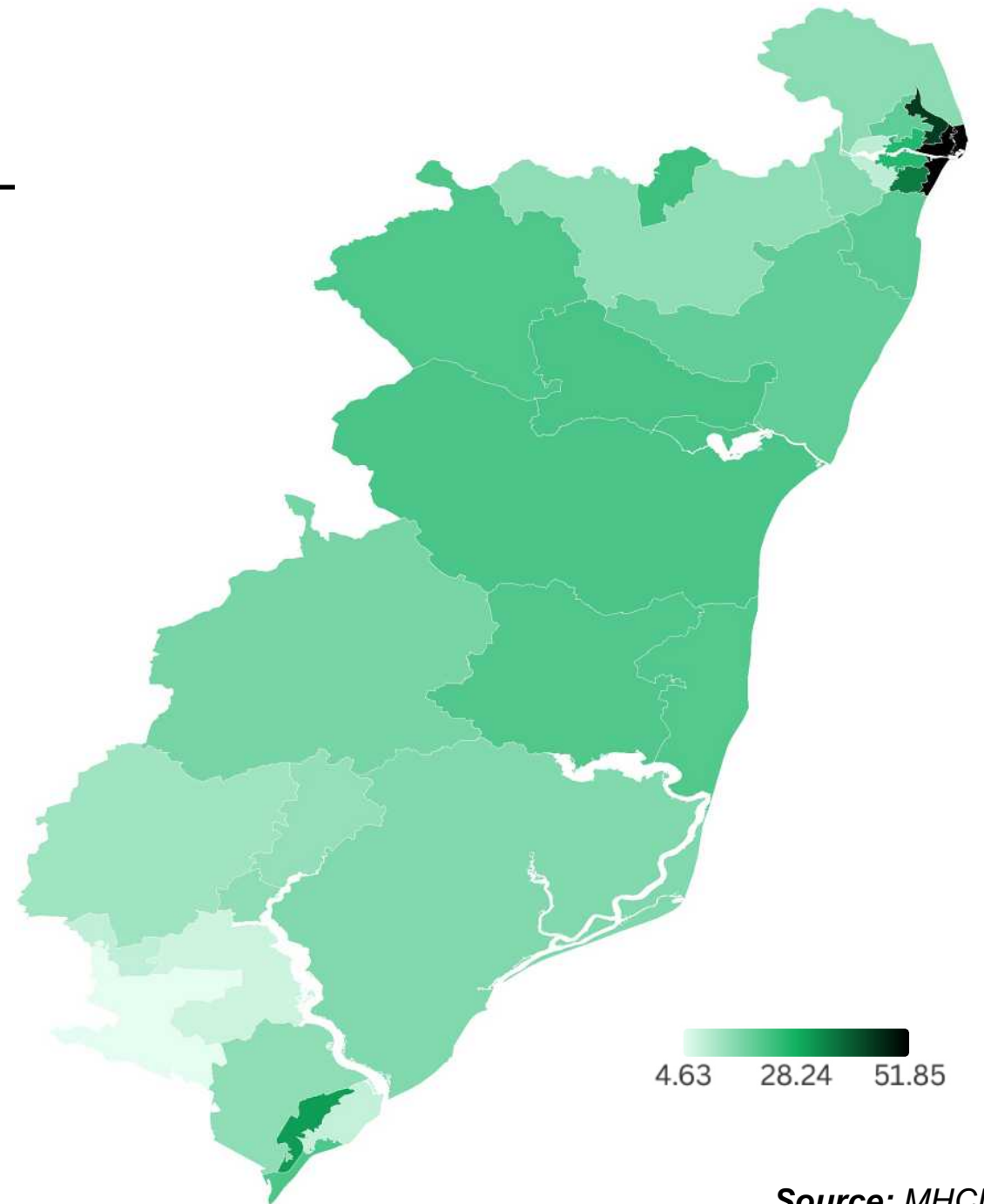
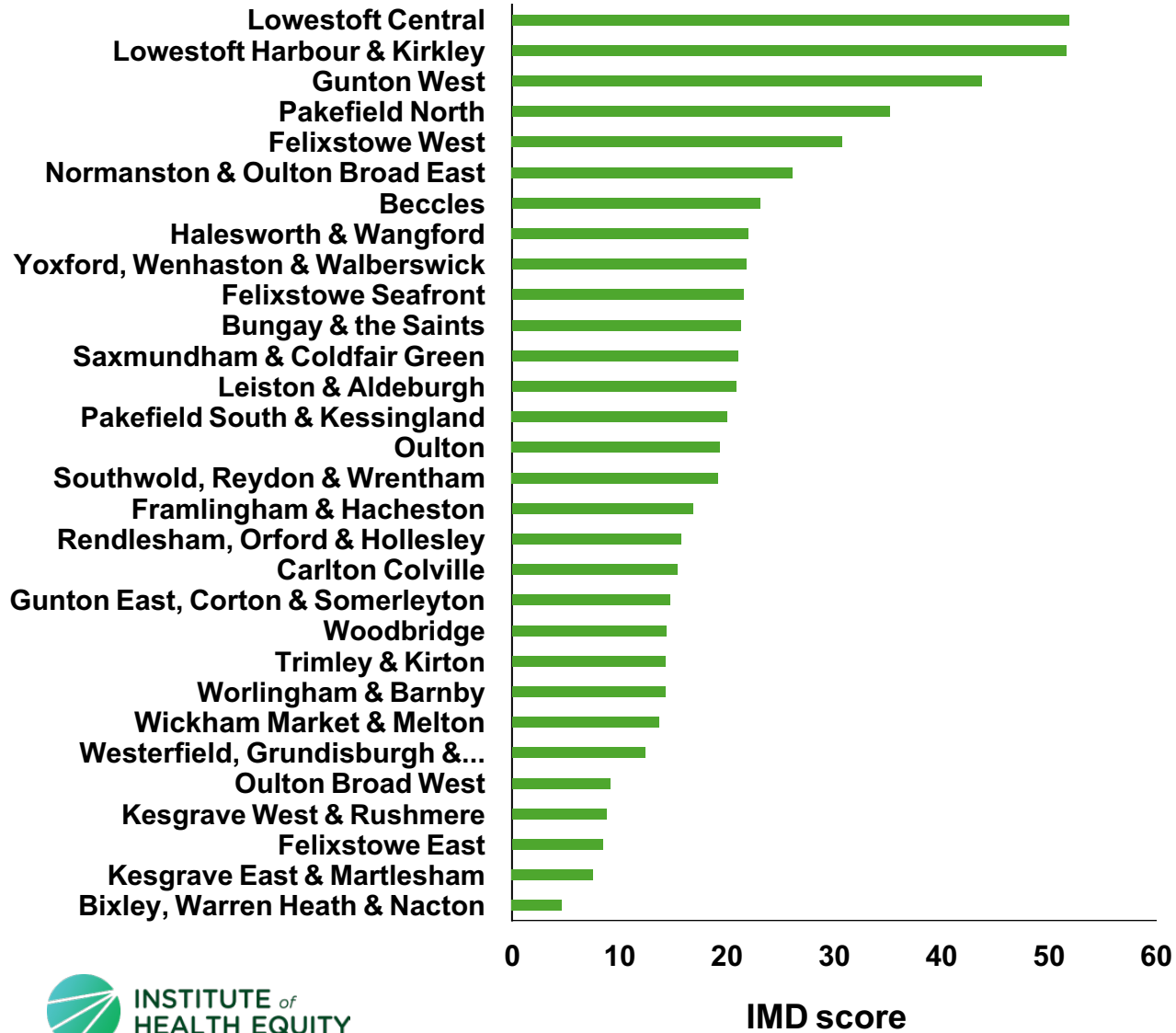


Pursue environmental sustainability and health equity together.

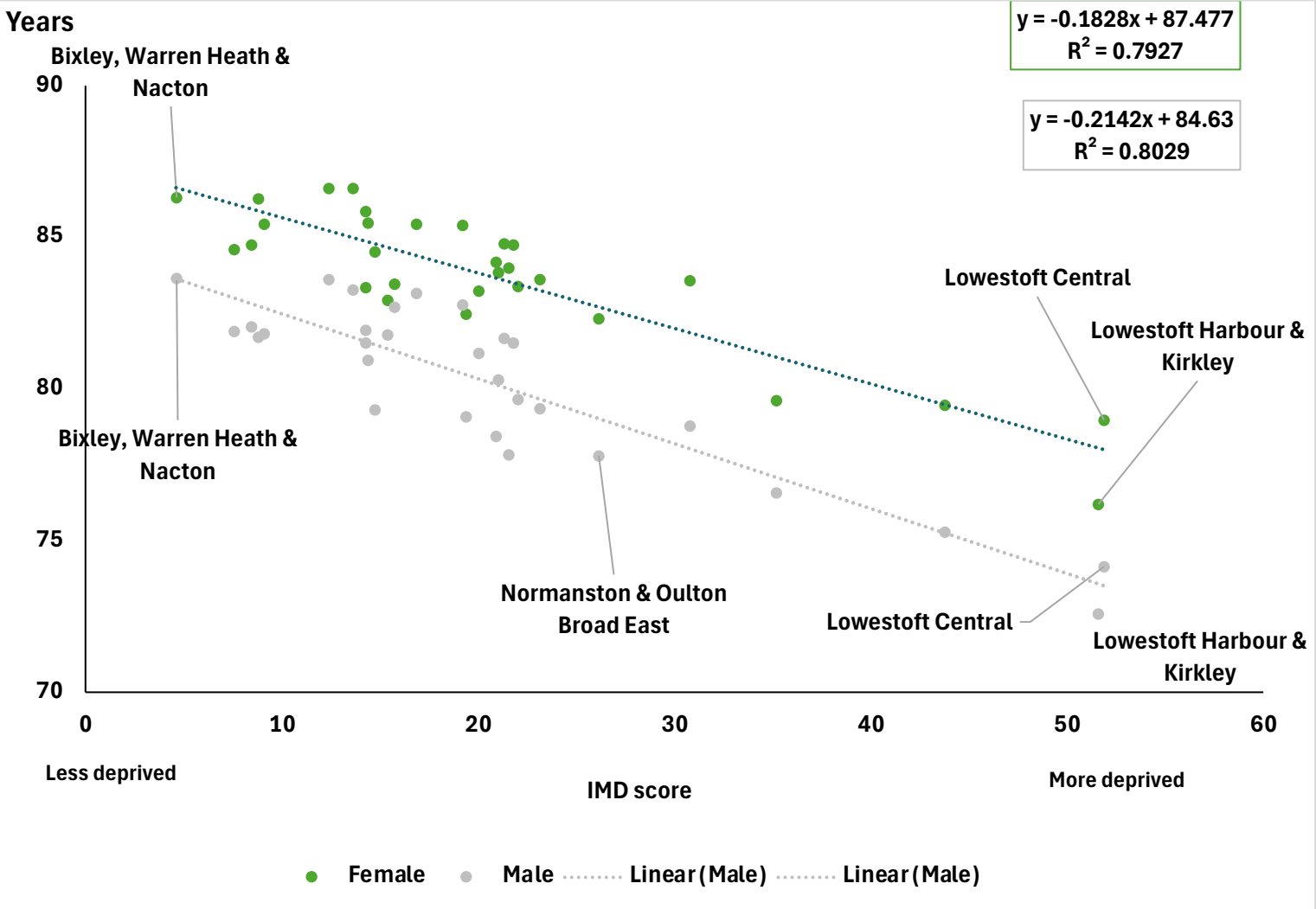
# Key information about the programme

- **Duration** – initially two-years to renew focus on inequalities...system change is the main goal
- **Who** – Everyone! Led by ESC, SCC and the two ICBs working with UCL Institute for Health Equity
- **When** – Started in September, launch event 27th November with Sir Michael Marmot
- **Structure** - Advisory Board, Steering Group, Operations Group, Wide Stakeholder Network and ESC Group
- **Phasing** - three key phases
- **Focus** – 8 Marmot Principles – thematic and place focus... where can we have most impact?

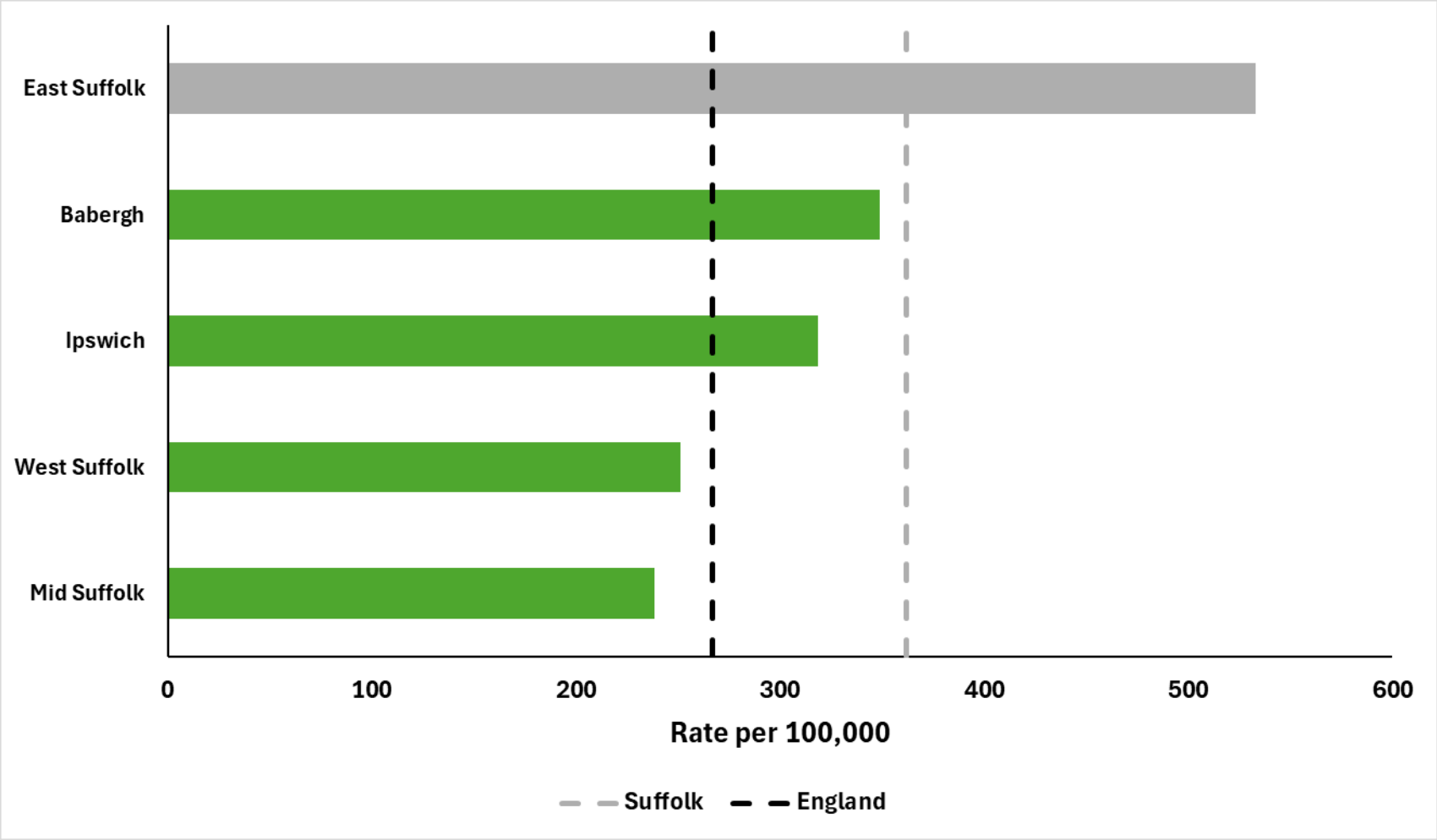
# IMD score, East Suffolk MSOAs, 2025



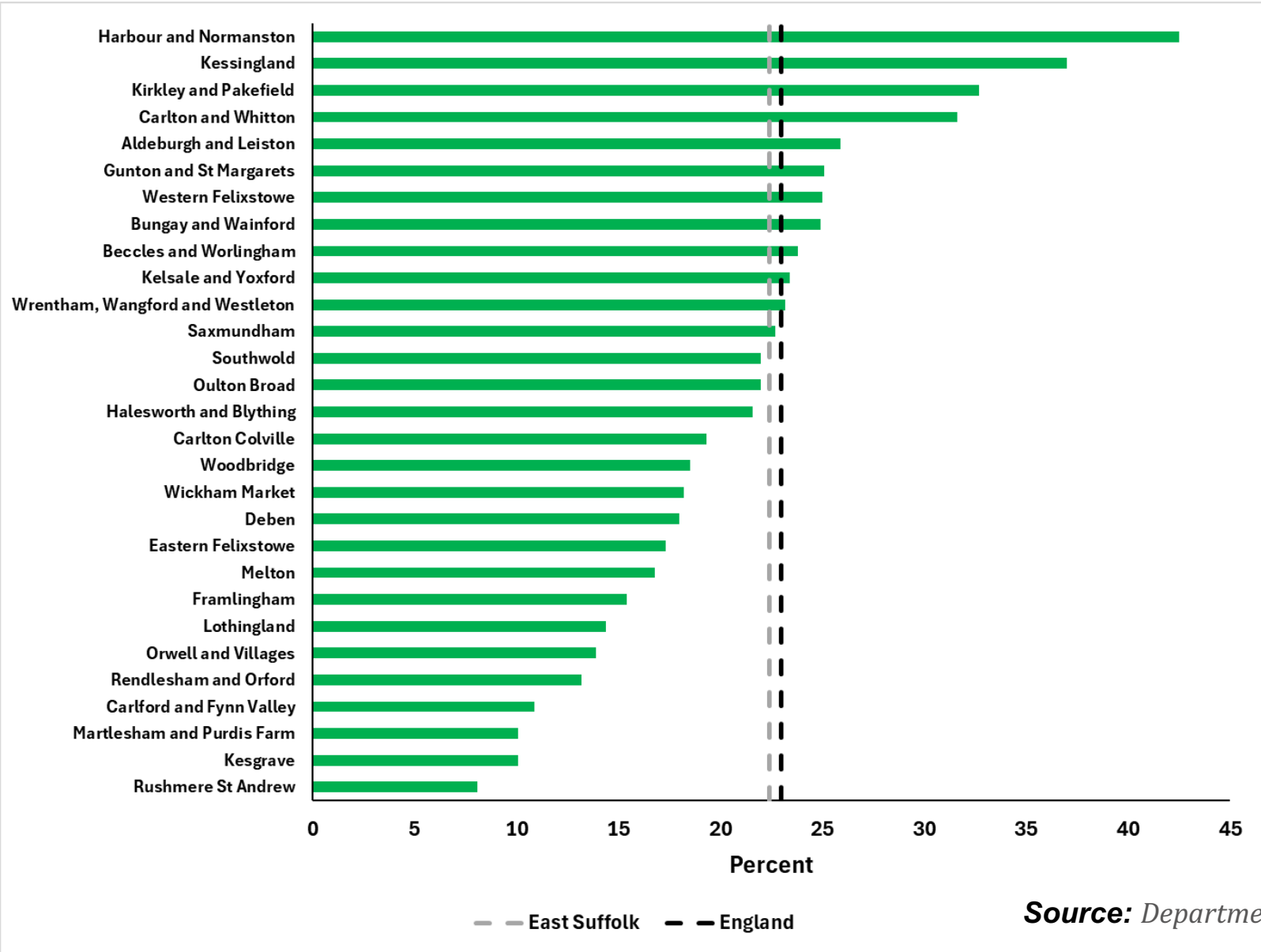
# Life expectancy, male and female, and deprivation (IMD score 2025), East Suffolk MSOAs, 2019-23



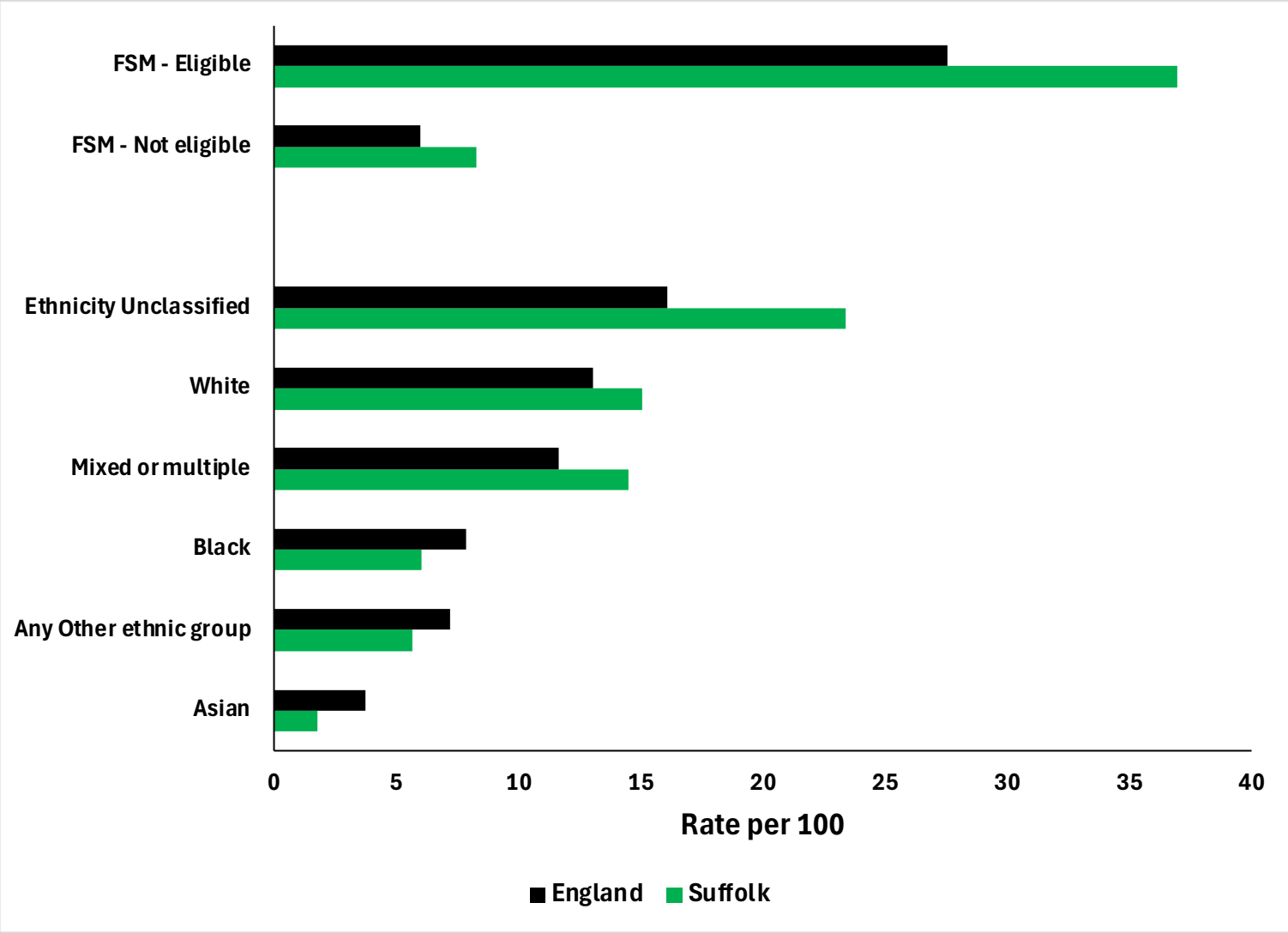
# Hospital admissions as a result of self-harm aged 10-24, per 100,000, Suffolk lower tier local authorities, Suffolk, and England, 2023/24



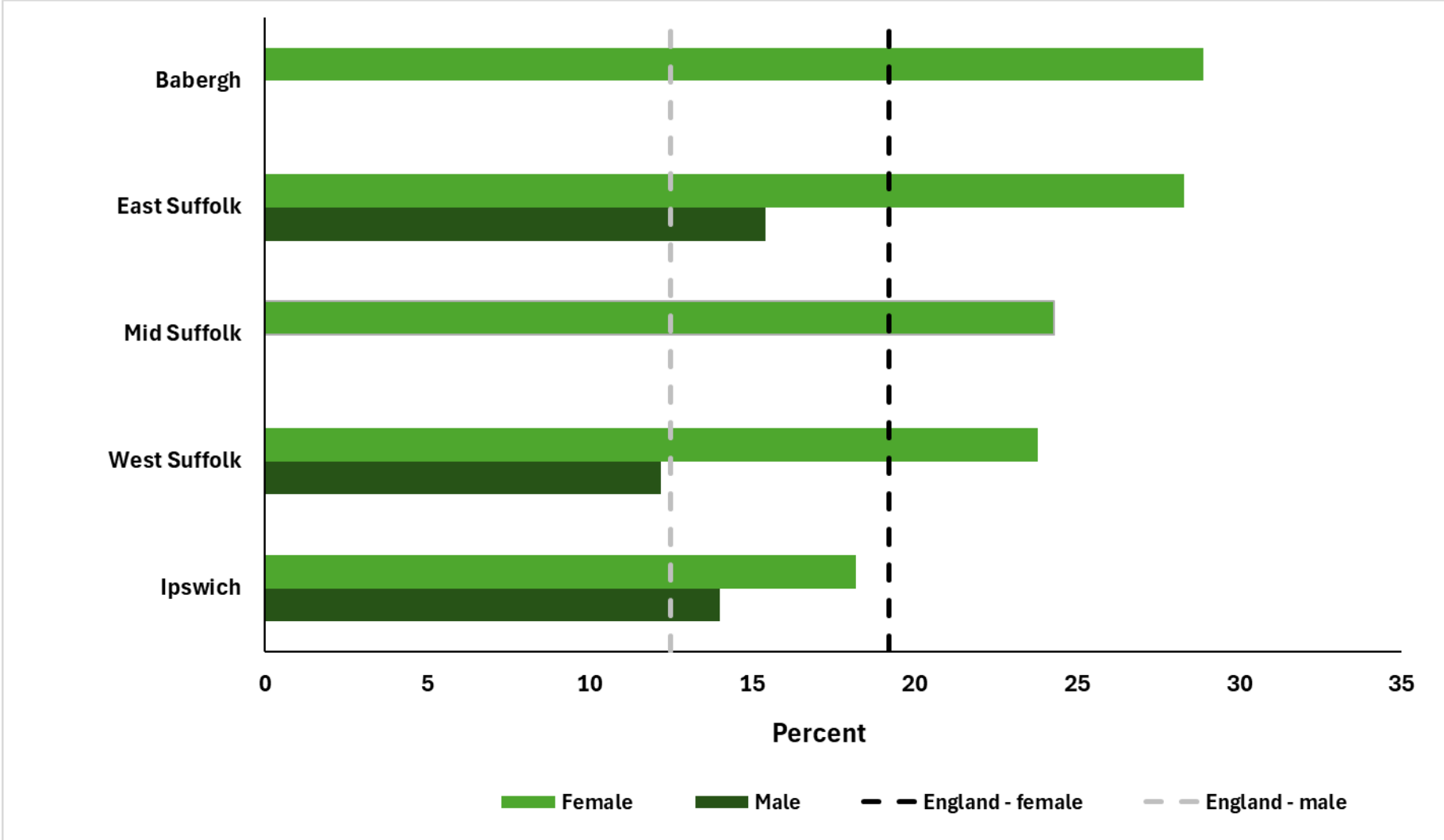
# Children in relative low-income families, percent, East Suffolk wards, East Suffolk, and UK, 2024



# Suspension rate in state funded secondary schools by ethnic group and FSM status, percent, Suffolk, and England, 2023/24

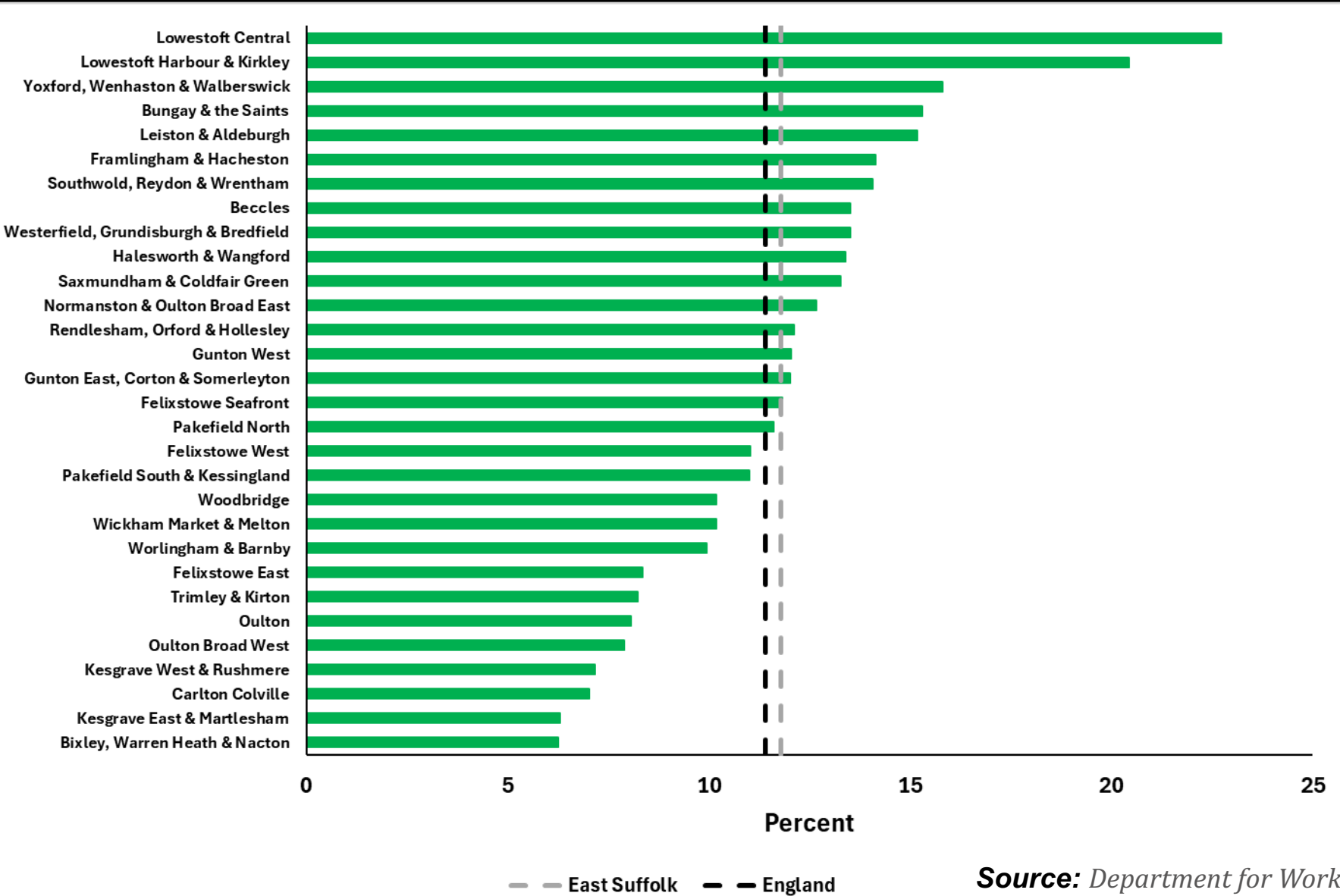


# Employees earning below the living wage, by sex, East Suffolk Lower Tier Local Authorities, and England, 2024



\*Employees earning under the living wage, £12.60 per hour in 2024, as defined by the Living Wage Foundation.

# Fuel poverty estimates, percent, East Suffolk MSOA's and East Suffolk, and England, 2023





PARKLAND / FIELDS

OUT OF TOWN SHOPPING

HIGH SCHOOL

BROWNFIELD LAND

HILLTOP

BUSINESS PARK

FACTORIES

PORT

CENTRAL

HOSPITAL / WALK IN CLINIC

COUNCIL OFFICES

PRIMARY SCHOOL

EAST COAST

BUS STATION

FOOD BANK

POLICE STATION

FIRE STATION

COMMUNITY CENTRE

WESTWAY

GP

UNIVERSITY

GREENFIELD

?

!

35

!

33

?

31

!

29

11

!

13

!

15

?

!

# Questions

