

# Item 6

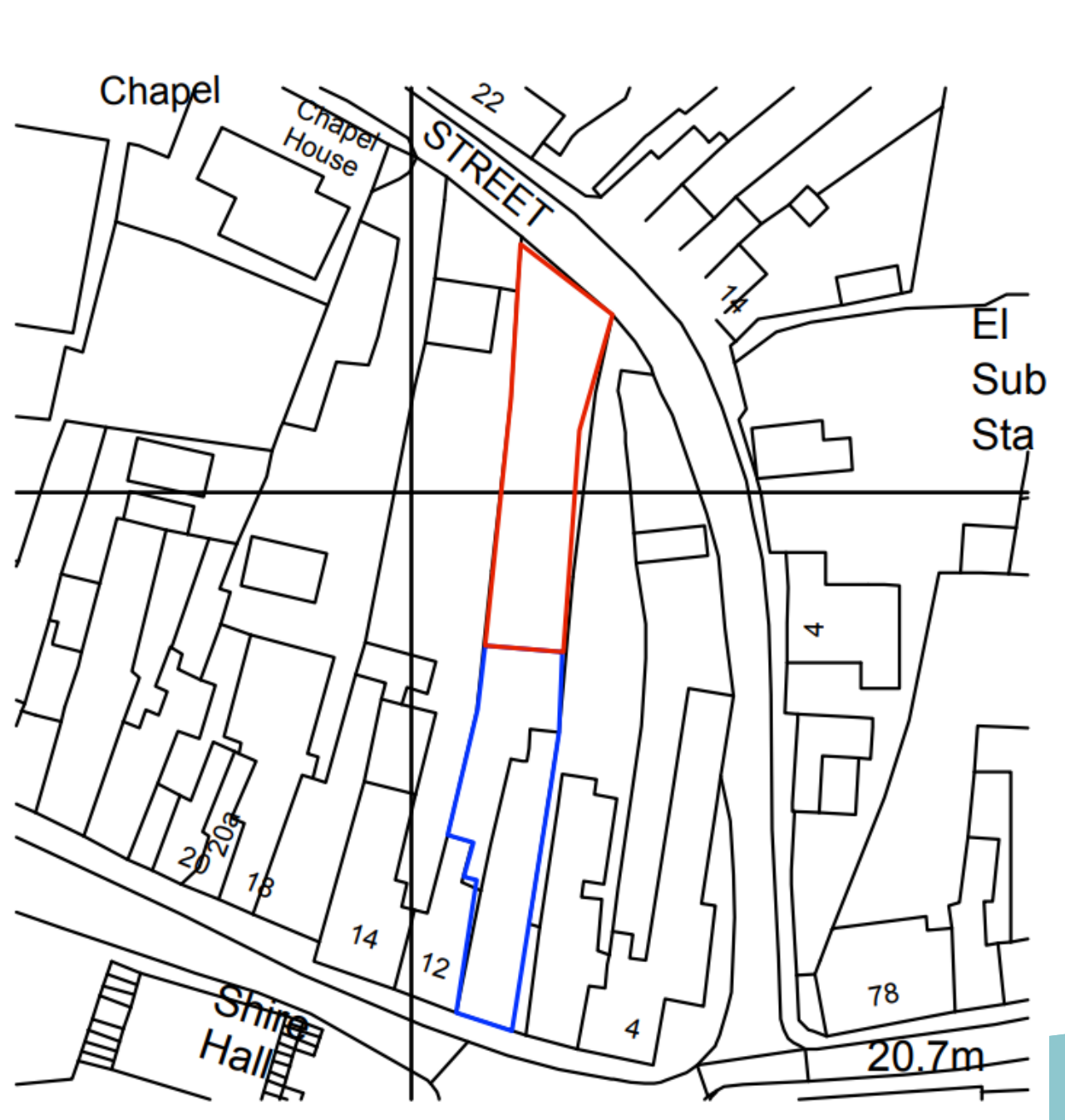
DC/21/5748/FUL

Erection of one new two-bedroom market dwelling

Land to the rear of 10-12 Market Hill, Woodbridge



Application site



# Aerial view



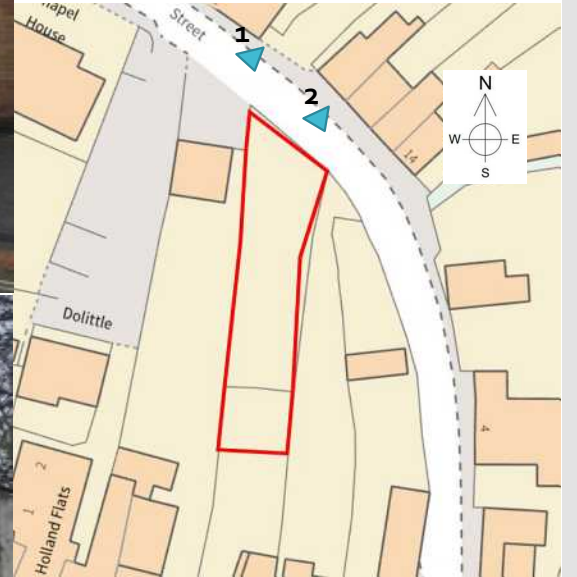


# Photos

1



2

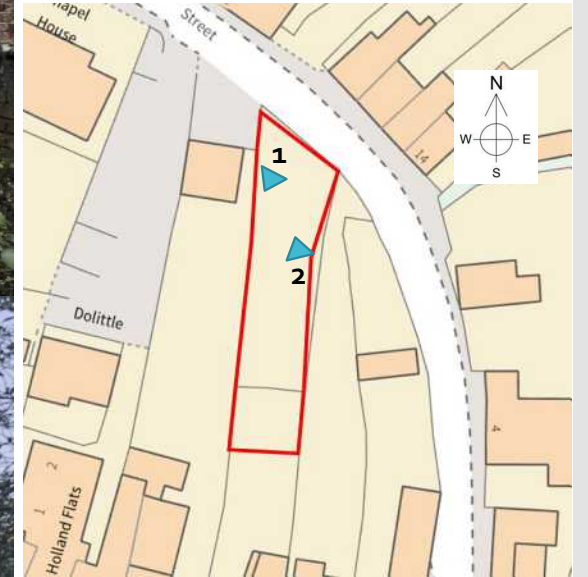


# Photos

1



2





# Photos

1



2



# Block Plan

Existing



Proposed





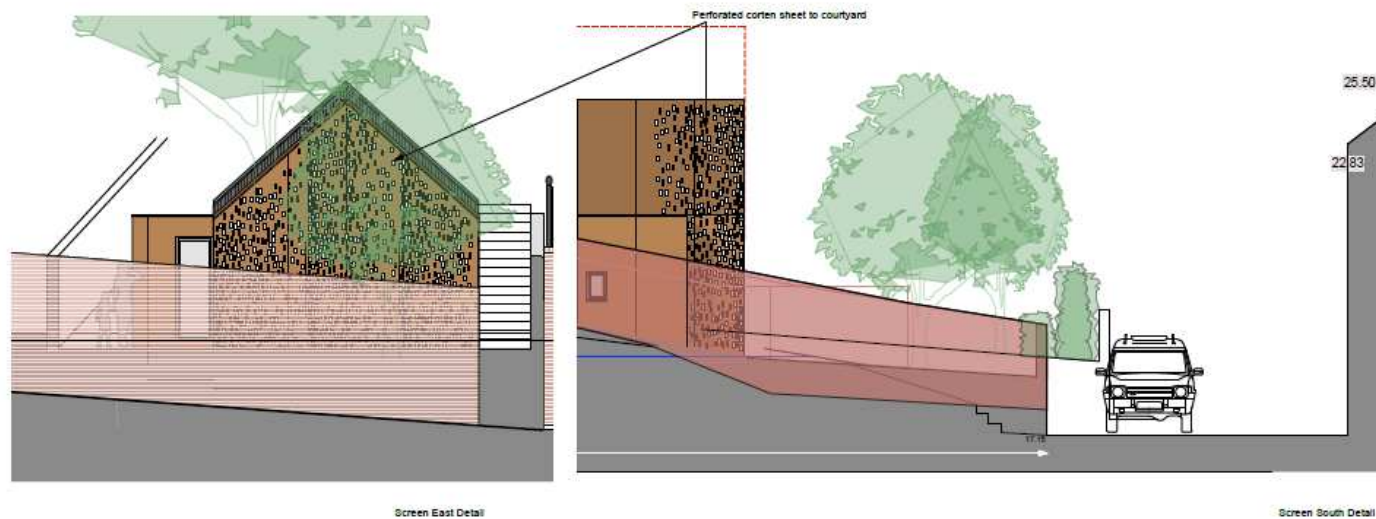
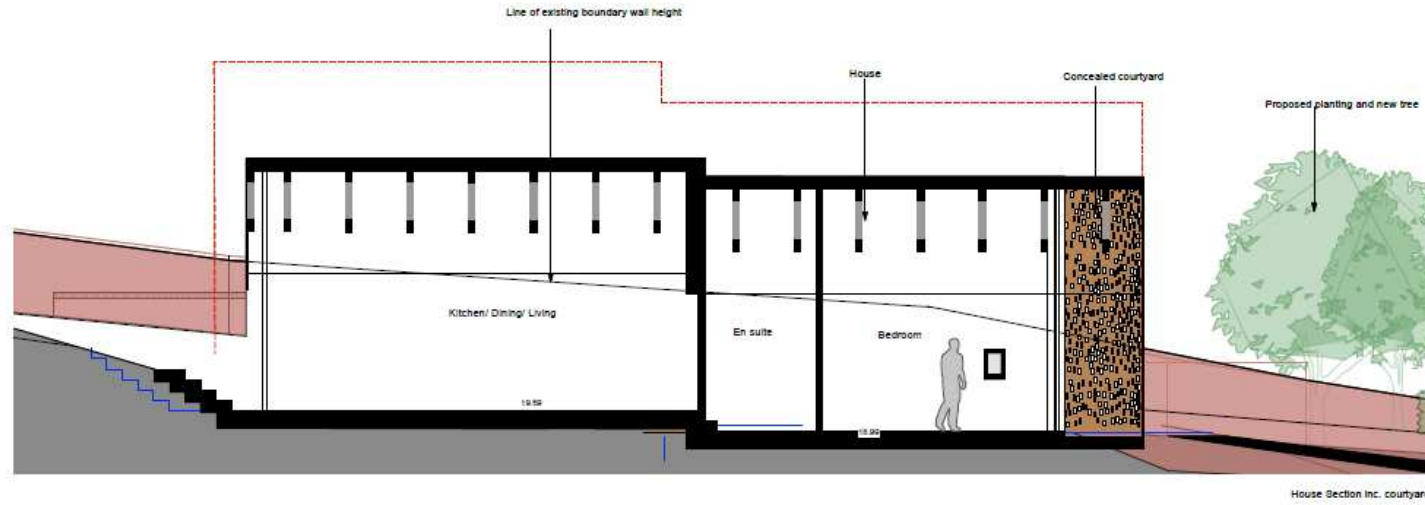
The floor plan shows a 3-bedroom house with a private garden. The layout includes a living area, kitchen, dining room, and three bedrooms. The house is situated on a plot with a double yellow line and a ramp. The plan is annotated with various measurements and labels, including 'UK 4h', 'Stump', 'Tow', 'EL', 'Ramp', 'Double yellow line', 'Private garden', and 'Bulbosa Buttress'.



# Elevations



# Concealed courtyard





# Recommendation

**APPROVE** subject to the following conditions:

1. Timescale (3 years);
2. Approved drawings;
3. Materials;
4. Submission of Remediation Method Statement (Pre-commencement);
5. Notification of commencement of remedial works;
6. Submission of validation report;
7. Discovery of unexpected contamination;
8. Provision of secure cycle storage;
9. Means to prevent surface water run-off from entering highway (Pre-commencement);
10. Provision of refuse/recycling storage and presentation area;
11. No removal of hedgerows, trees or shrubs within breeding bird season;
12. Submission of Arboricultural Method Statement;
13. No removal of retained trees and shrubs;
14. Submission of a scheme of landscaping works;
15. Implementation of landscaping works;
16. Submission of a Construction Methodology Statement (Pre-commencement).