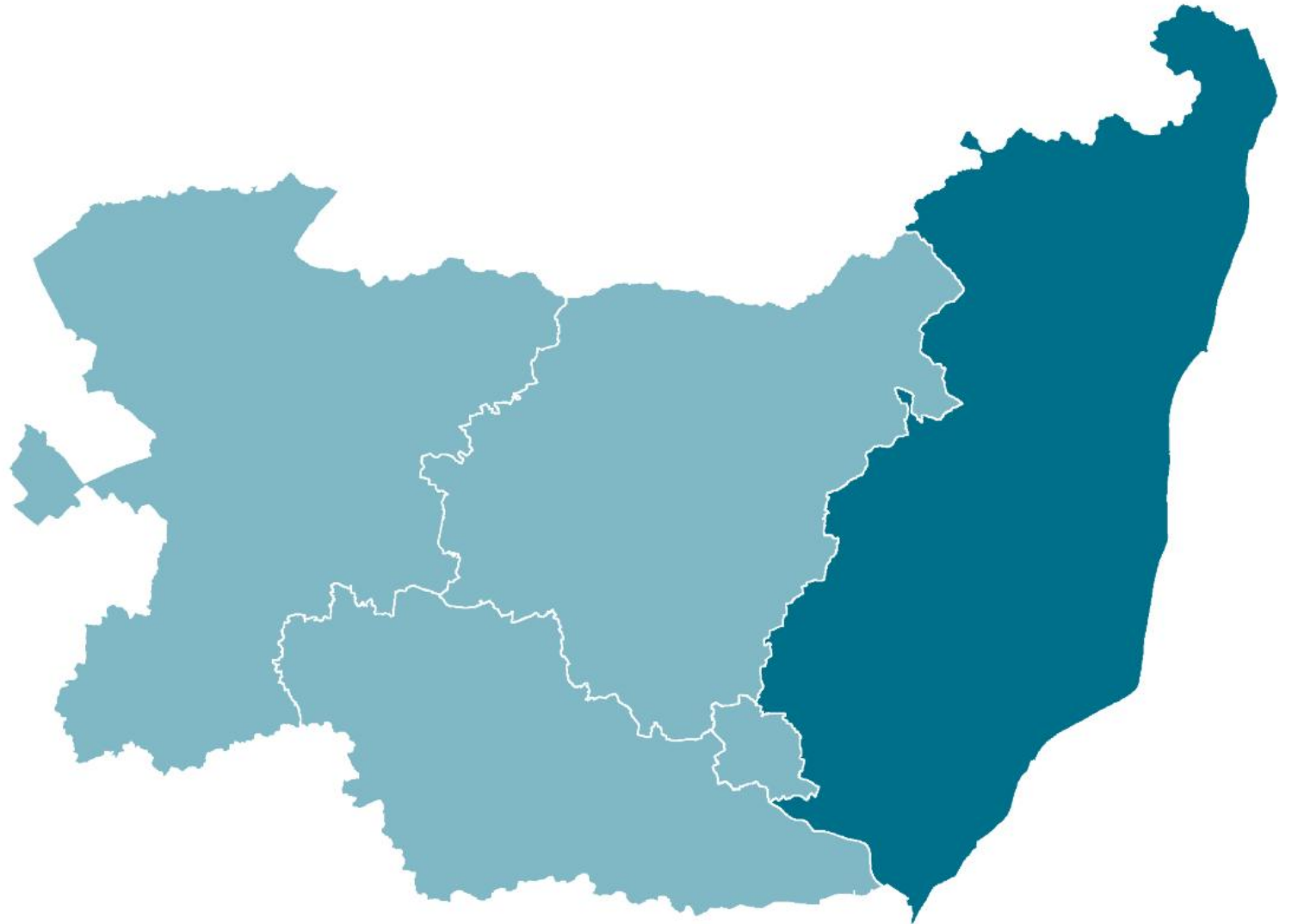


# East Suffolk

## Profile

Q3 2021/22



# Population – Kesgrave

## Key Facts



Total population

**15,822**



Largest age group

**10-15 &  
45-49**



Smallest age group

**80-84**



Just over

**1 in 3**

people are aged under 16

21.6%



More than

**1 in 6**

people are  
aged 65+

15.8%



**475**

people aged 85 or  
over

3.0% of total population

# Population – Martlesham and Purdis Farm

## Key Facts



Total population

**7,558**



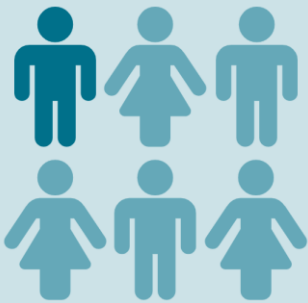
Largest age group

**70-74**



Smallest age group

**85+**



Just over

**1 in 6**

people are aged  
under 16



More than

**1 in 3**

people are aged 65+



Just over

**256**

people aged 85 or over

15.7%

25.3%

3.4% of total population

# Population – Rushmere

## Key Facts



Total population

**8,114**



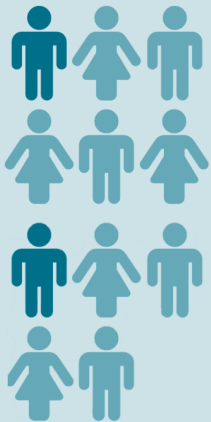
Largest age group

**10-14 &  
50-54**



Smallest age group

**85+**



Just under

**1 in 11**

people are aged  
under 16



More than

**1 in 6**

people are aged  
65-85



**235**

people aged 85+

22.0%

16.6%

2.9% of total population

# Population – Rushmere St. Andrew

## Key Facts



Total population

**4,525**



Largest age group

**50-54**



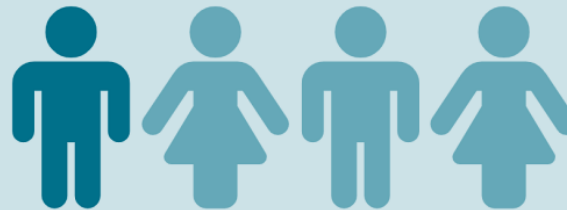
Smallest age group

**25-29**



Just over  
**1 in 6**  
people are aged  
under 16

16%



More than  
**1 in 4**  
people are aged 65- 85

21.5%



**199**  
people aged 85+

4.4% of total population

# Population – Carlford and Fynn Valley

## Key Facts



Total population

**8,486**



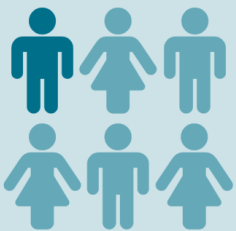
Largest age group

**50-54**



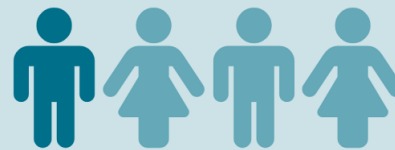
Smallest age group

**25-29 &  
30-34**



Just over  
**1 in 6**  
people are aged  
under 16

16.3%



Just over  
**1 in 28**  
people are aged 65-85

24.9%



**1383**  
people aged 85+

4.4% of total population

# Population – Kesgrave, Martlesham & Villages

## Key Facts



Total population

**44,505**



Largest age group

**50-54**



Smallest age group

**25-29 &  
30-34**



Just over

**1 in 5**

people are aged  
under 16

21.6%



Just under

**1 in 5**

people are aged 65-  
85

15.8%



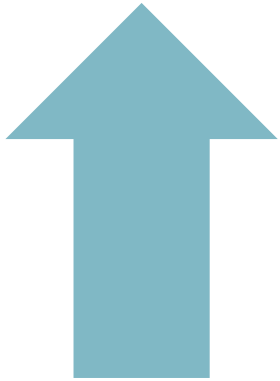
**1383**

people aged 85+

3.0% of total population

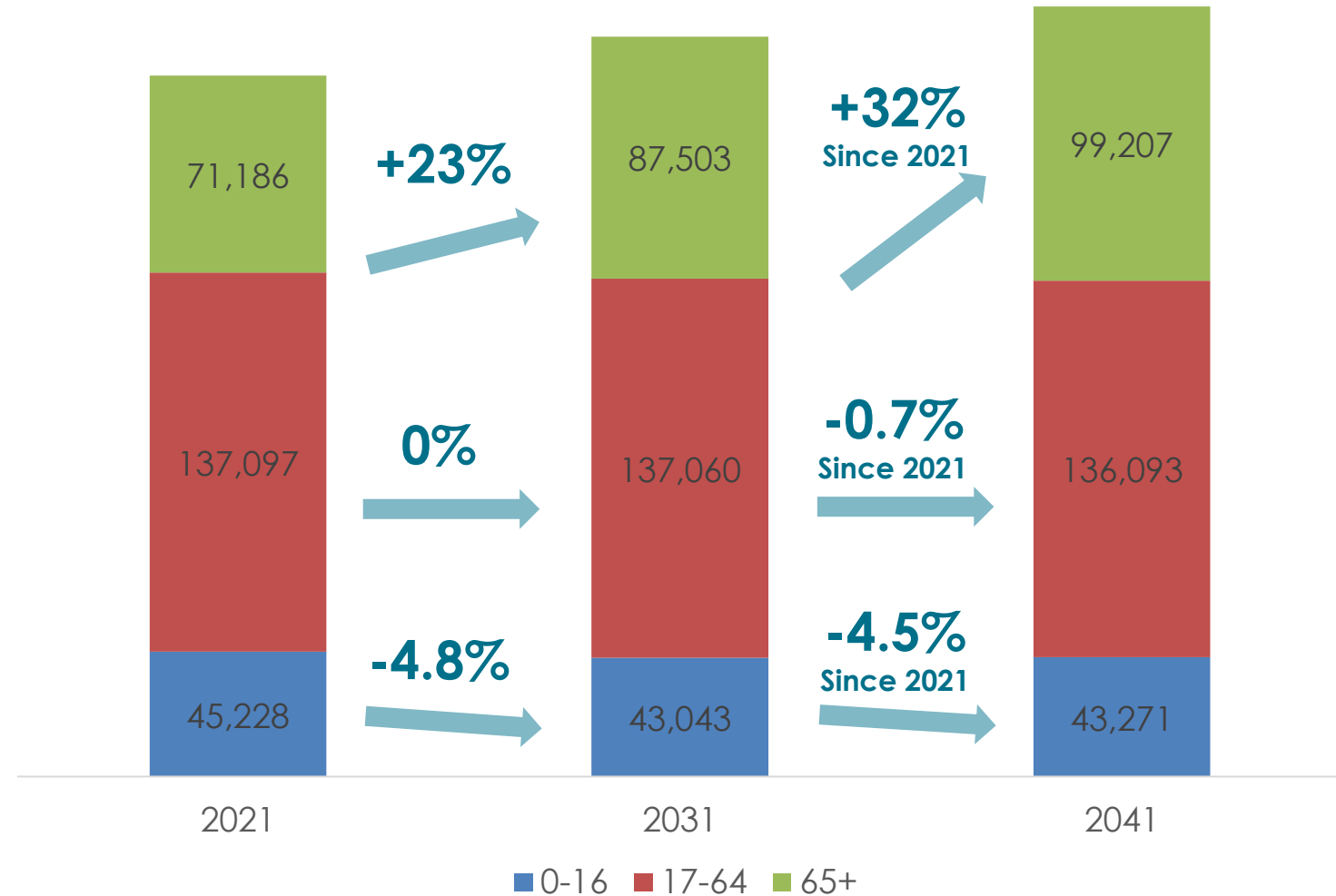
# Population Trends

The population of **East Suffolk** has grown by **4.4%** over the past decade



In the same period the **Suffolk** population grew by **5.5%** and the **Great Britain** population by **6.9%**

East Suffolk population projection by children, working-age and elderly age groups



# Deprivation

## Key facts



**15,400**

people affected by  
income deprivation

**11.4%**

**Suffolk average 10.2%**



**9.8%**

of working age  
people affected by  
employment  
deprivation

**Suffolk average 8.3%**  
**13,200 people**



**6,350**

children affected by  
income deprivation

**15.2%**

**Suffolk average 13.6%**



**9,160**

older people affected  
by income deprivation

**10.5%**

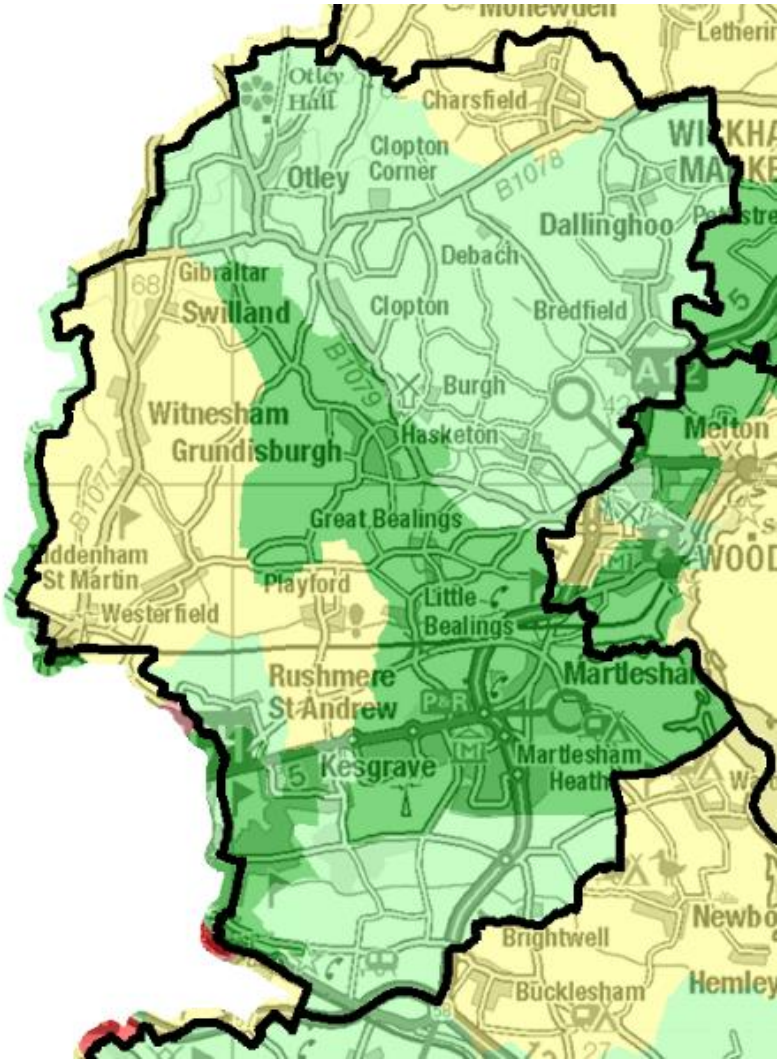
**Suffolk average 10.2%**

# Deprivation

## Overall

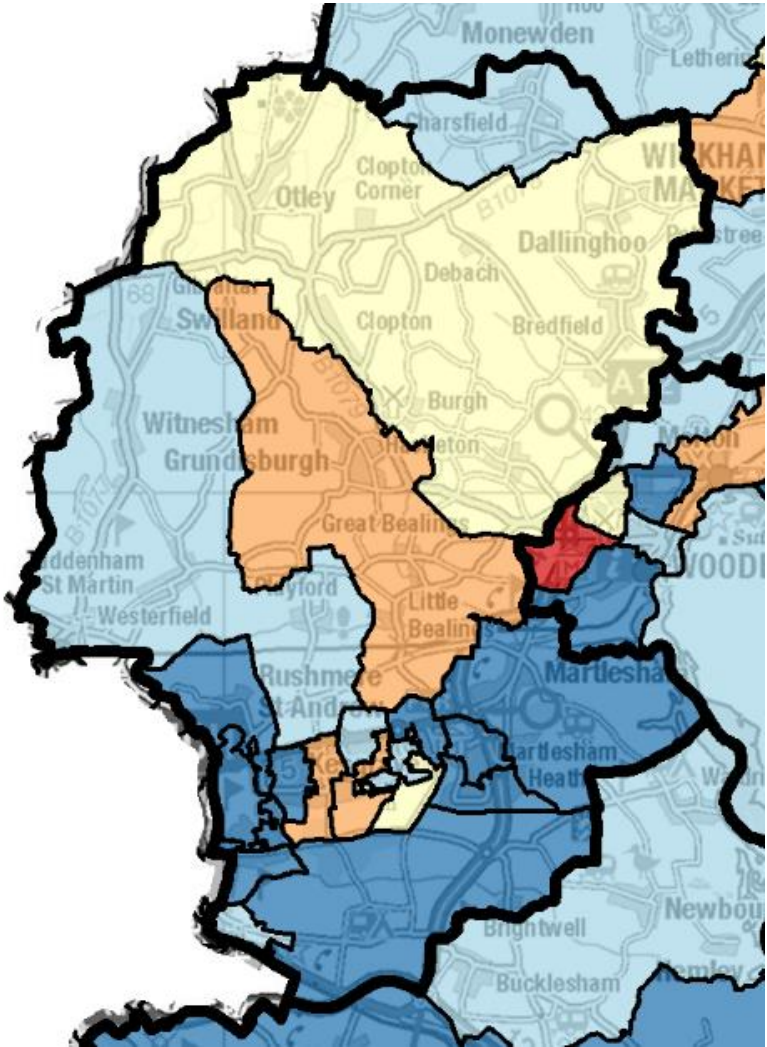
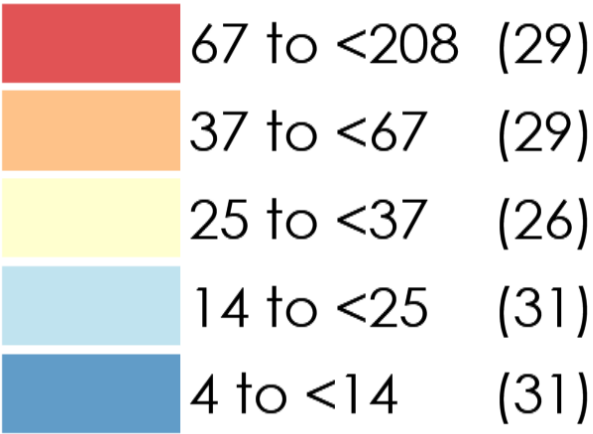
IMD quintile	Population	% of population
1	31,189	12%
2	50,447	20%
3	71,601	29%
4	39,936	16%
5	57,200	23%

1 = most deprived 20% of areas in England  
5 = least deprived 20% of areas in England



# Deprivation Children

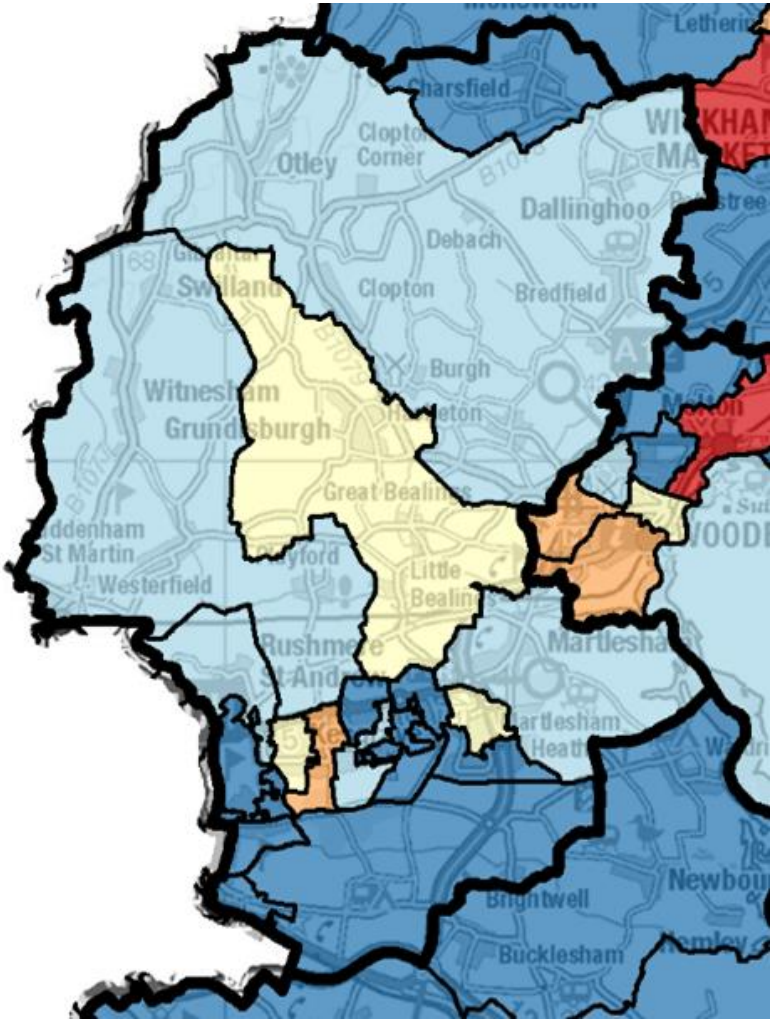
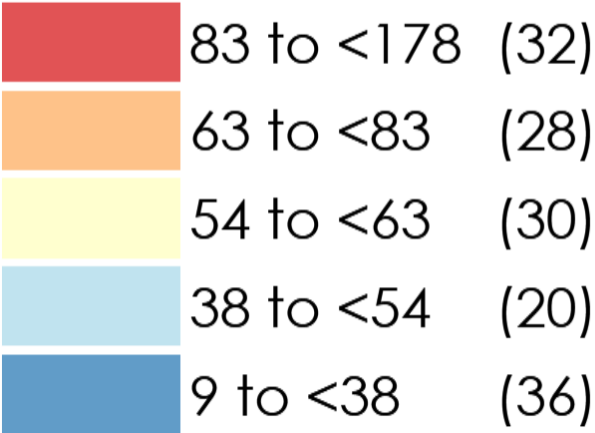
## Children aged 0-15 income deprived



# Deprivation

## Older people

### People aged 60+ income deprived



# Health and social care

## Life expectancy

	Life expectancy at birth for males	Life expectancy at birth for females
East Suffolk	80.7	83.8
Suffolk	80.9	84.3
England	79.8	83.4
Our CP area	83.2	86.3

### Highest and lowest life expectancy in East Suffolk

Melton Ward (Melton, Woodbridge & Deben Peninsula CP)	85.9	90.5
Harbour & Normanston Ward (Lowestoft and NP CP)	75.1	80.5



8.1 years

the gap in life expectancy for males between our CP area and Harbour & Normanston Ward



5.8 years

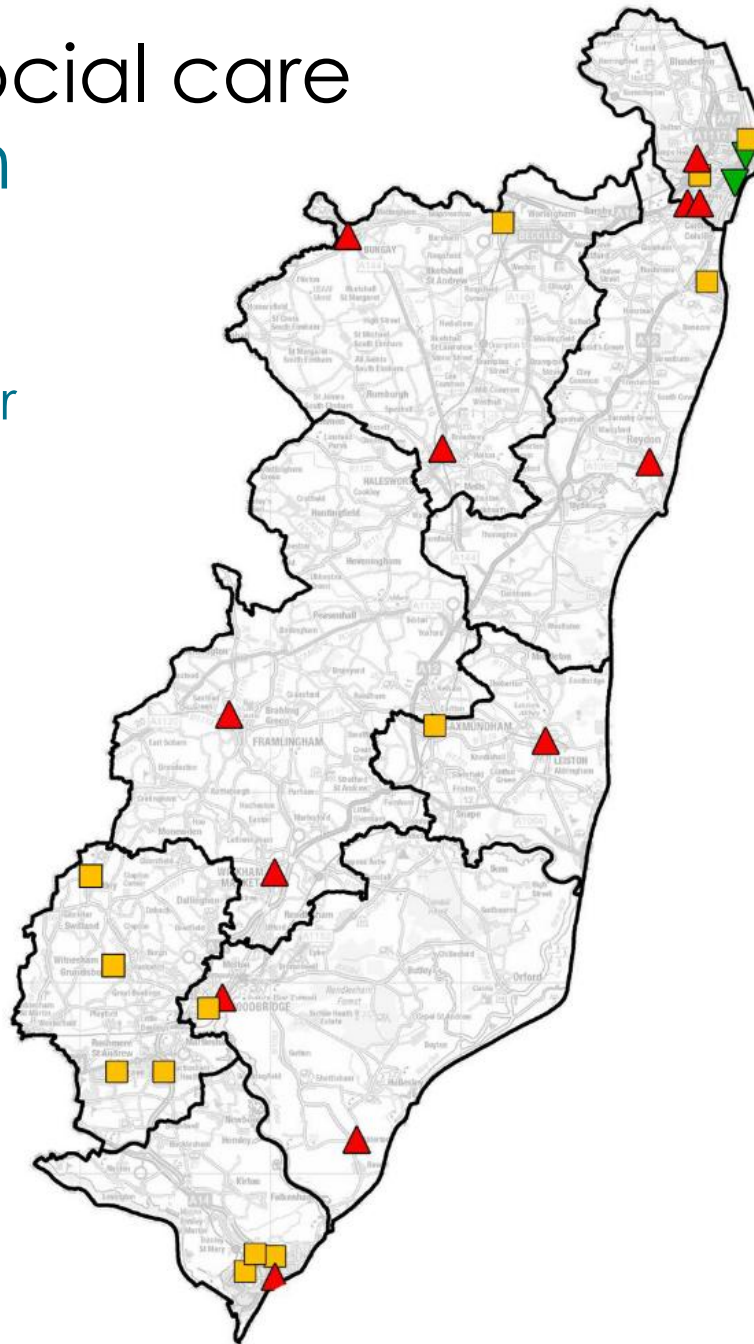
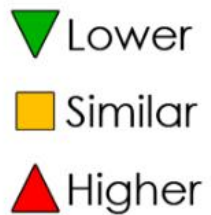
the gap in life expectancy for females between our CP area and Harbour & Normanston Ward

# Health and social care

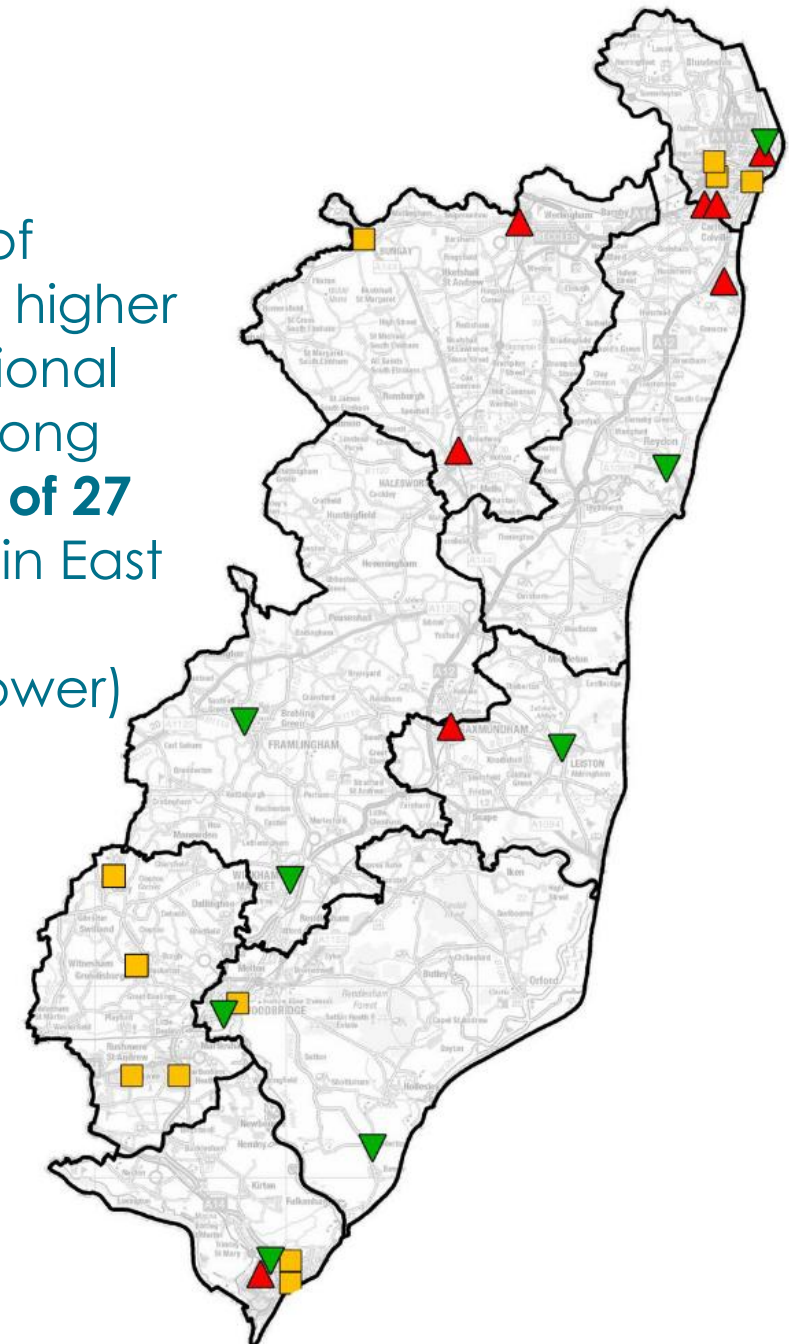
## Mental health

Prevalence of **dementia** is higher than the national average among patients at **12 of 27** GP surgeries in East Suffolk (11 similar, 2 lower)

### Compared to England



Prevalence of **depression** is higher than the national average among patients at **8 of 27** GP surgeries in East Suffolk (9 similar, 8 lower)



# Health and social care

## Childhood weight



Primary school children overweight  
or obese

Lowest CP: Southwold & Kessingland 20.1%

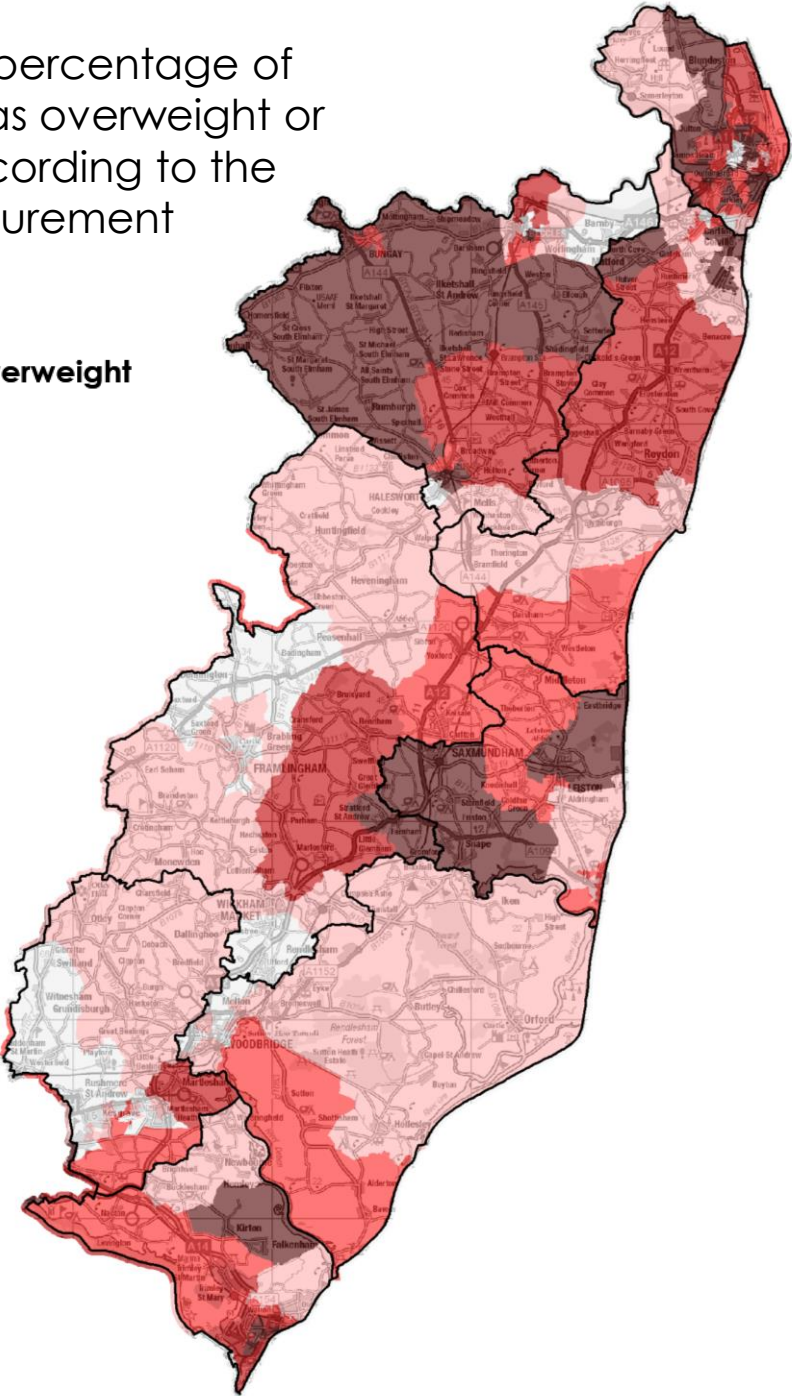
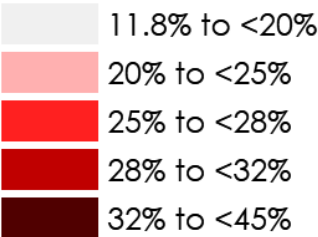
Our CP: 20.7%

Highest CP: Felixstowe 27.9%

Suffolk: 27.5%

The map shows the percentage of children measured as overweight or very overweight according to the National Child Measurement Programme (NCMP)

% overweight or very overweight

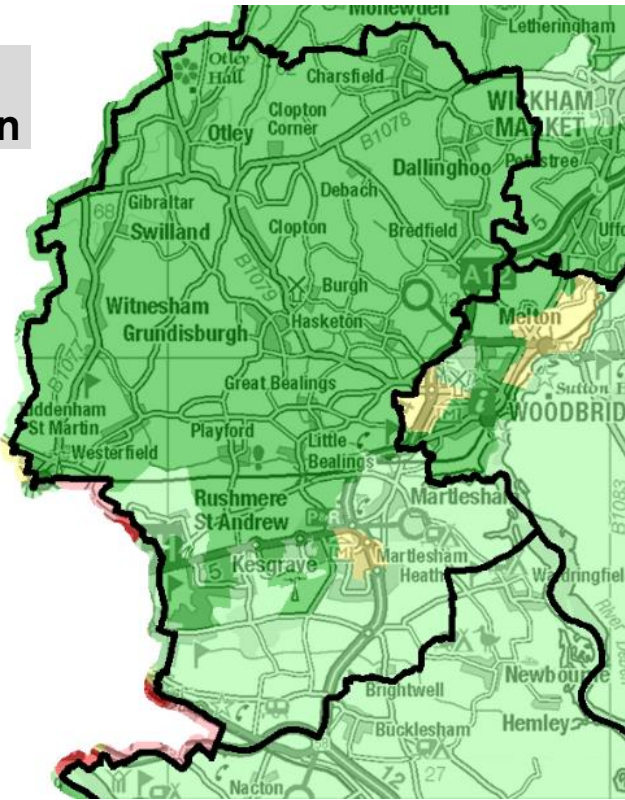


# Health and social care

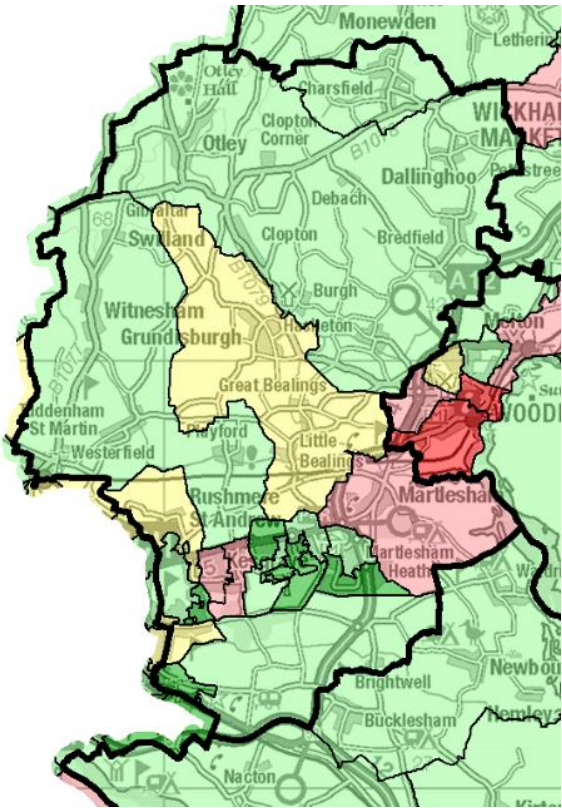
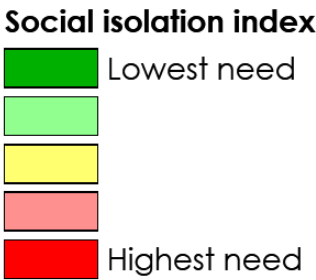
## Disability and social isolation

IMD health deprivation and disability domain

IMD quintile	Population	% of population
1	23,309	9%
2	50,505	20%
3	50,522	20%
4	78,387	31%
5	47,650	19%



Social isolation

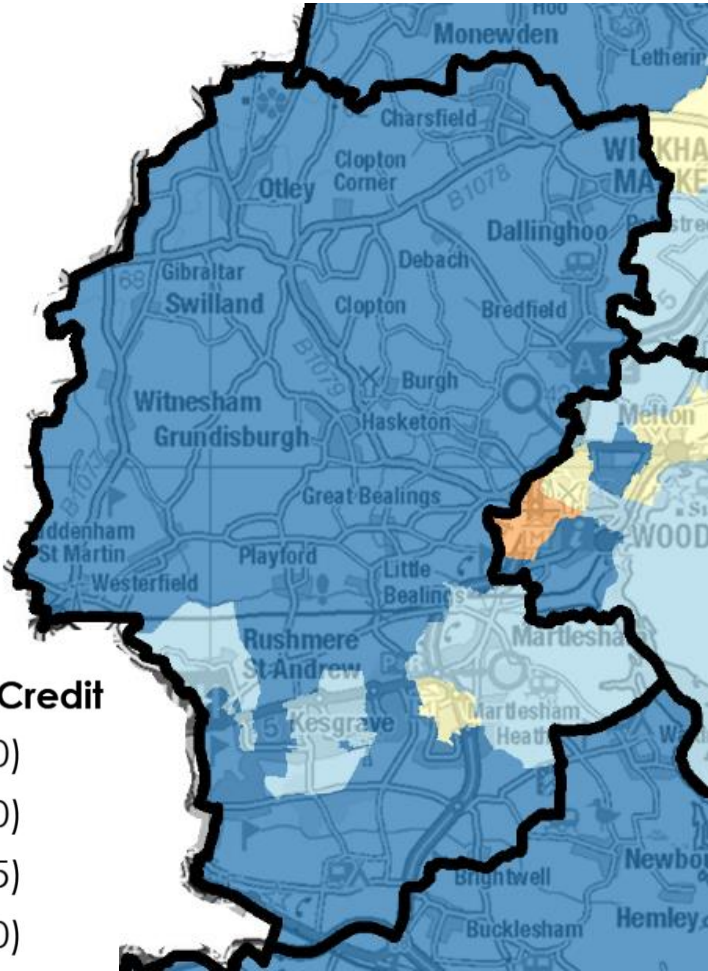
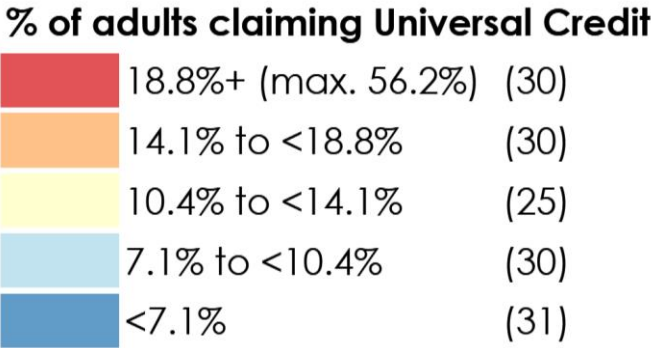


# Employment and education Benefit claimants



**14.5%**  
of adults in receipt  
of Universal Credit

Suffolk average: 13.5%  
Highest CP: Lowestoft 24.6%  
Lowest CP: Kesgrave & Martlesham 6.7%



# Employment and education

## Education – Key Stage 2

### Ofsted breakdown



10\*

Outstanding or Good

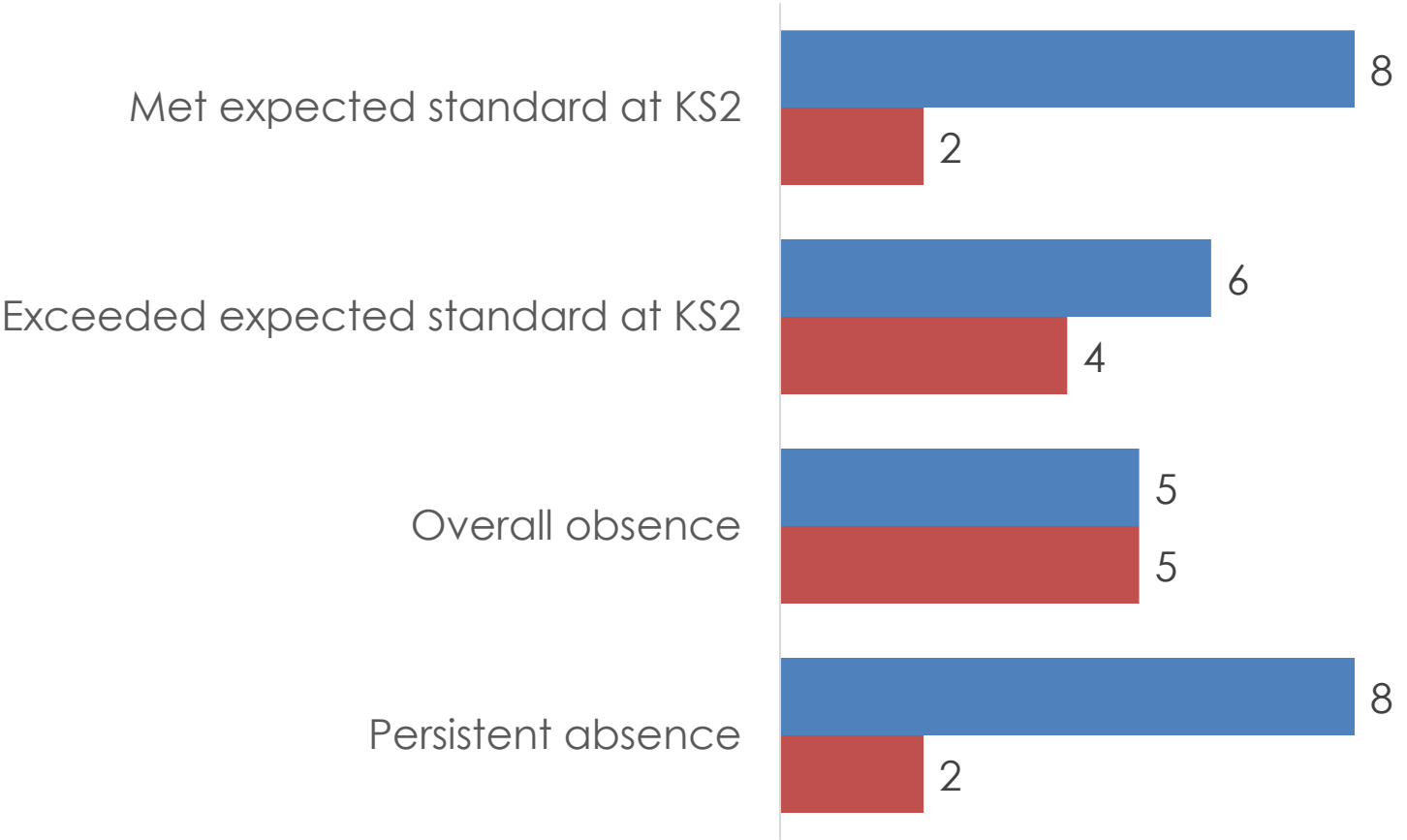


0

Require improvement  
or Inadequate

### Number of our CP Primary schools where the % of KS2 pupils...

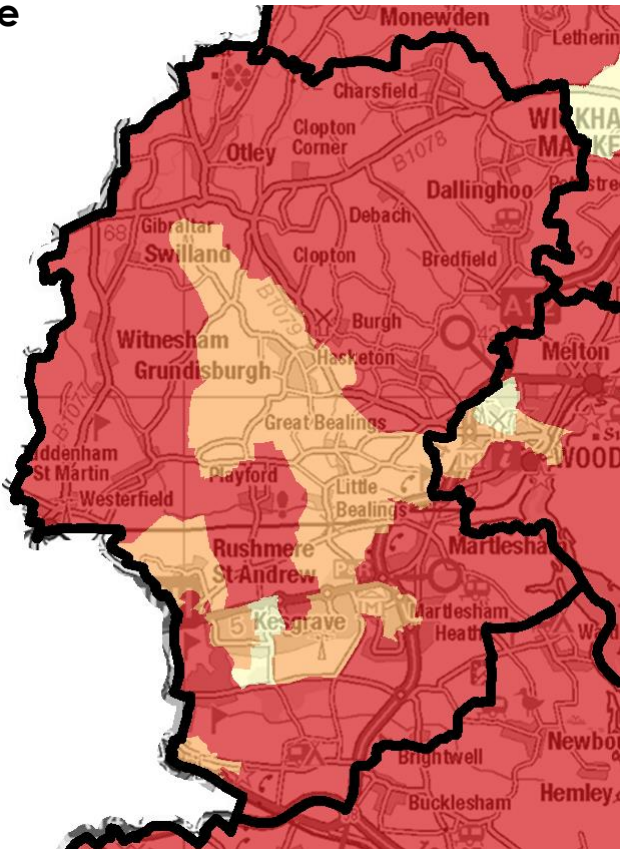
■ Better than England average   ■ Worse than England average



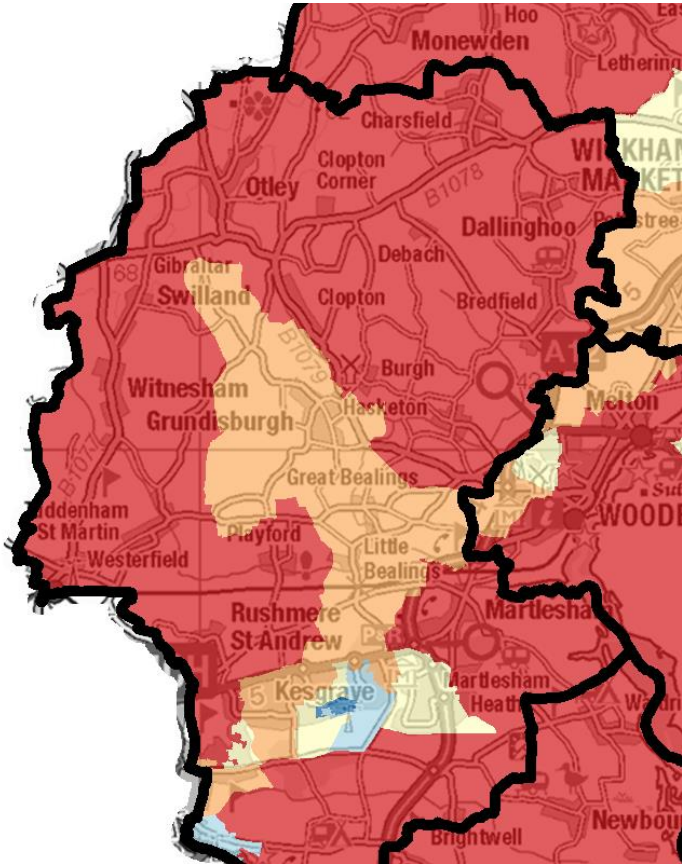
# Housing

## Prices and affordability

Average house price for the year to December 2020



Median house price to income ratio



Almost 9 in 10 (85%) of the eligible population have had their second vaccine dose in our CP area. However this varies within East Suffolk. For example in Lowestoft central only 64% of the eligible population have received a second dose...

Percentage of people aged 12+ vaccinated up to and including 7 December 2021:

