

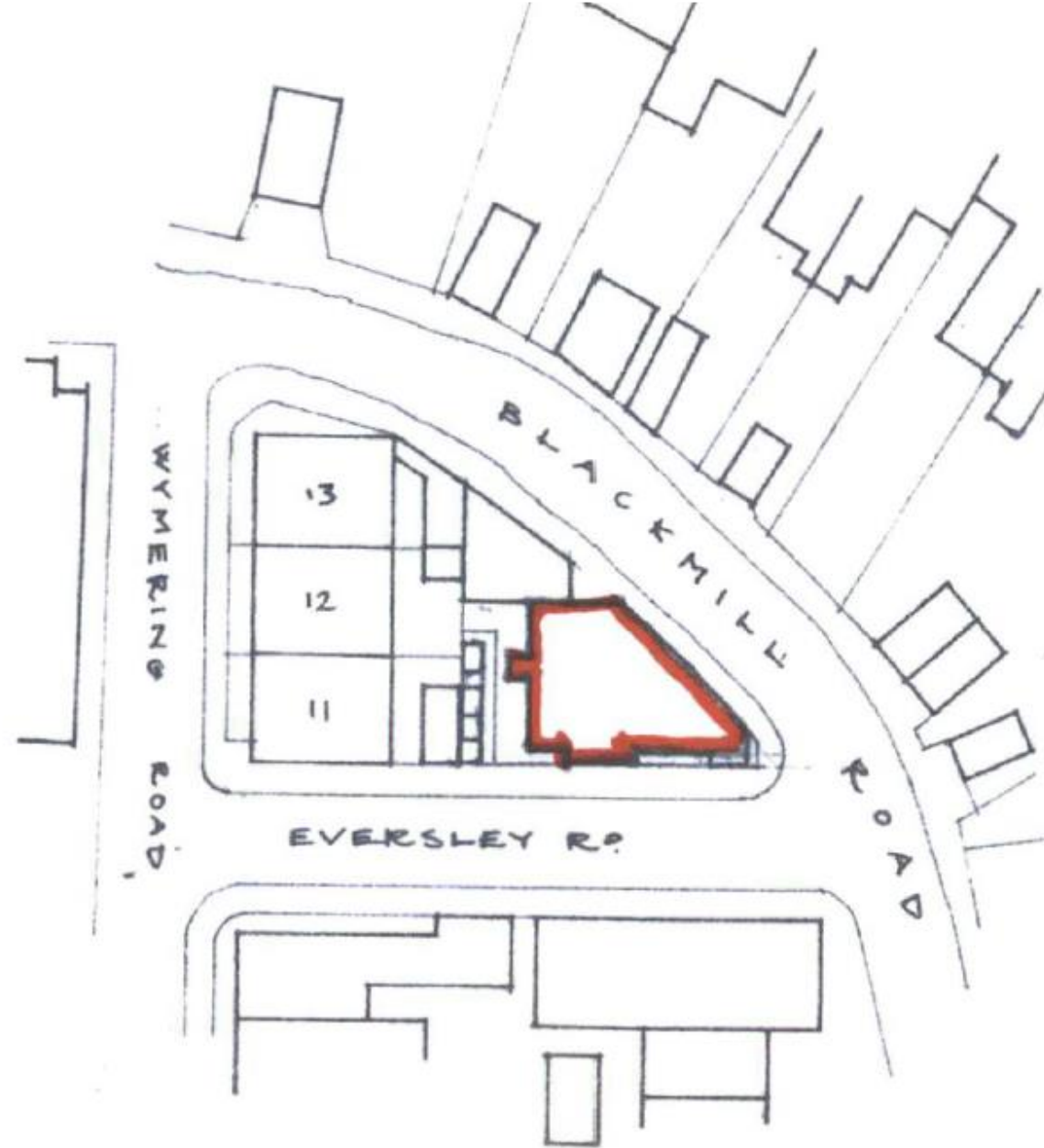
Item 10:

DC/21/3789/FUL

Application to amend the development comprising the construction of a glazed roof pavilion - amended design to that approved under planning permission ref. DC/18/2428/FUL.

3 White Point, Eversley Road, Southwold, IP18 6AW

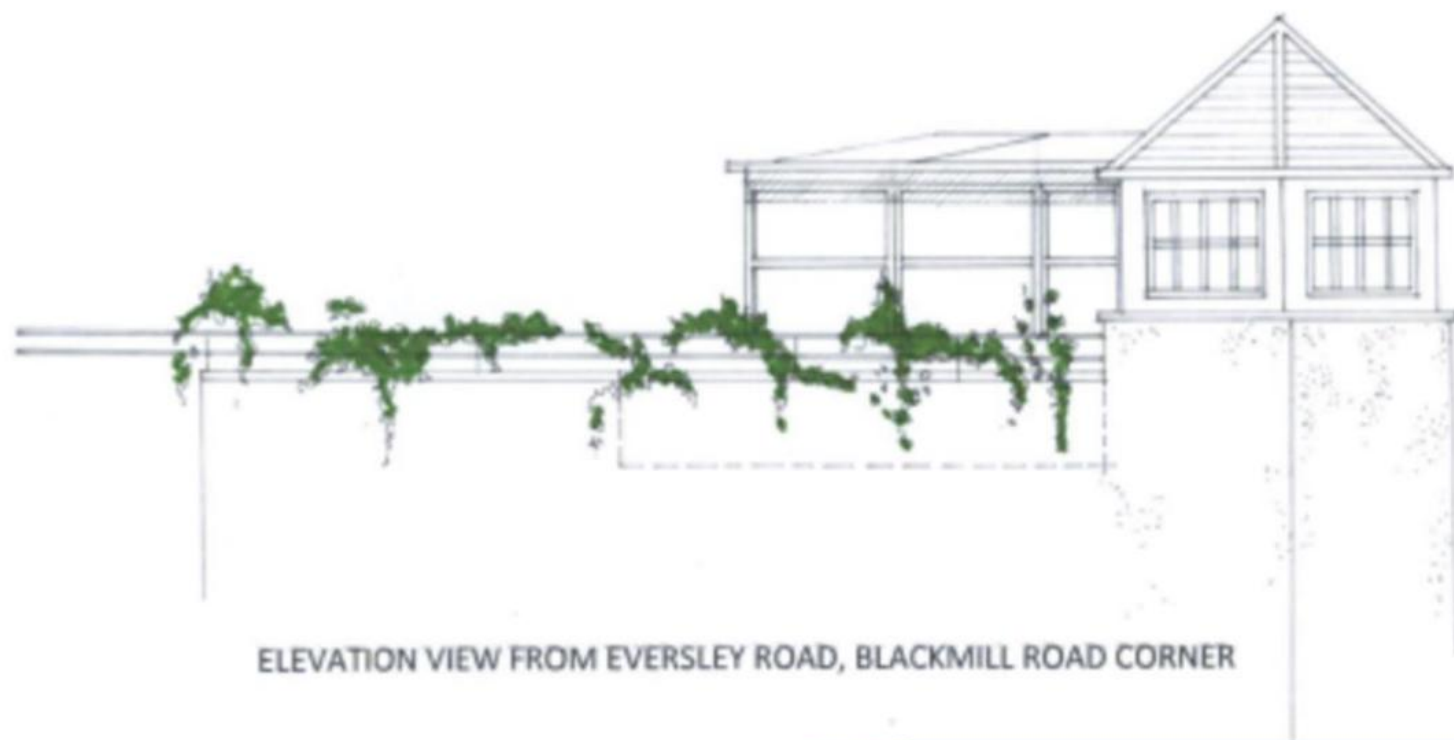




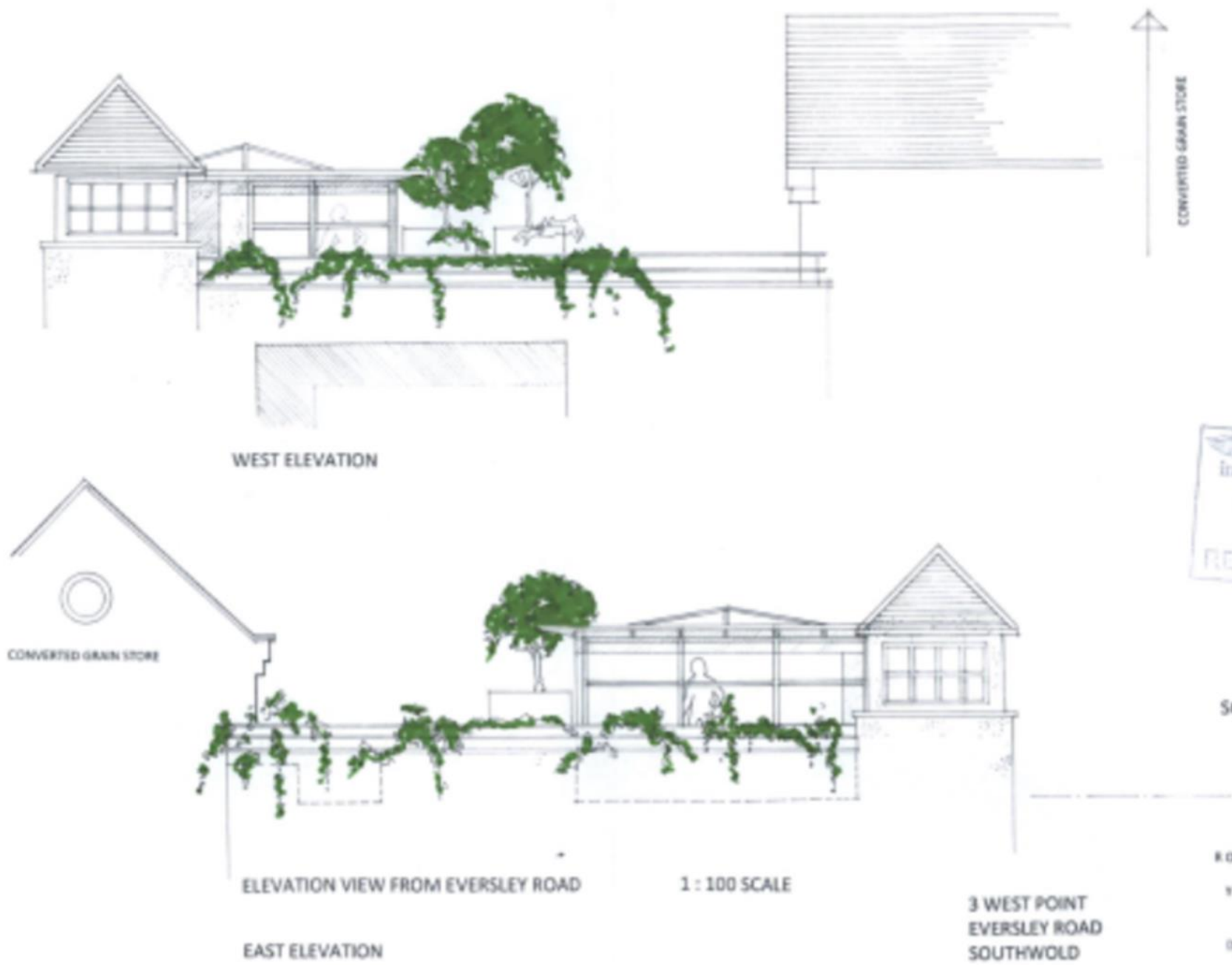
block plan 1:500



Approved  
Scheme  
DC/18/2428/FUL



Approved  
Scheme  
DC/18/2428/FUL































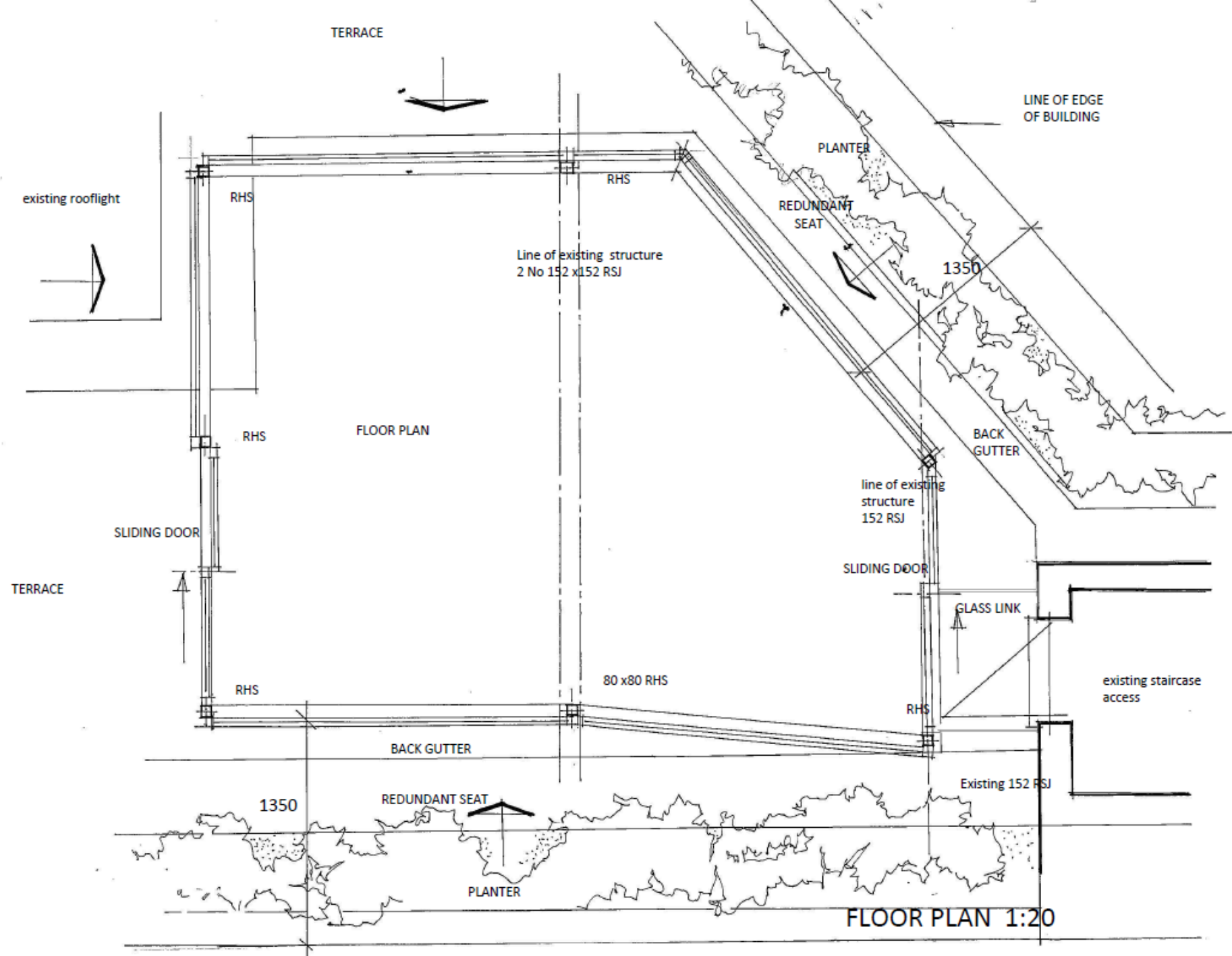










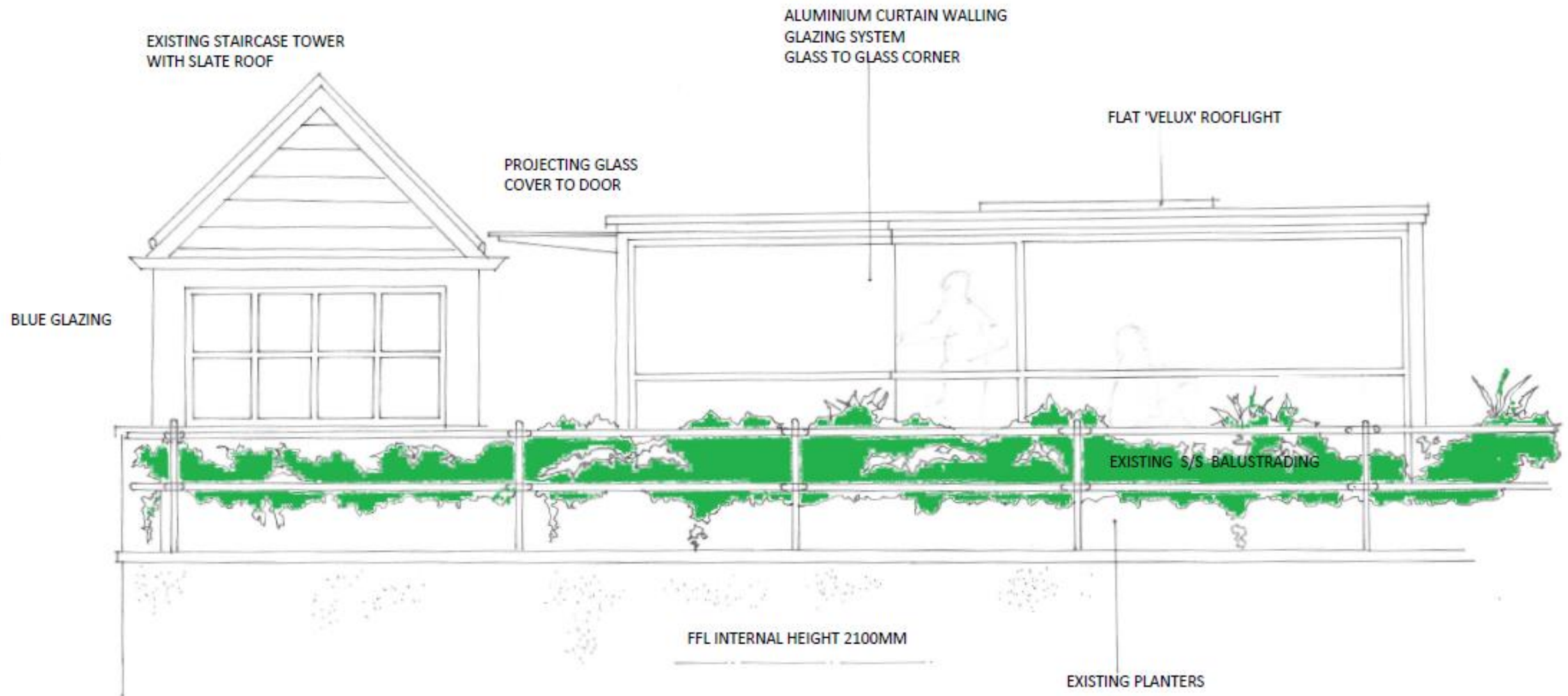




NOTE:-  
AREA OF BUILDING  
REDUCTION



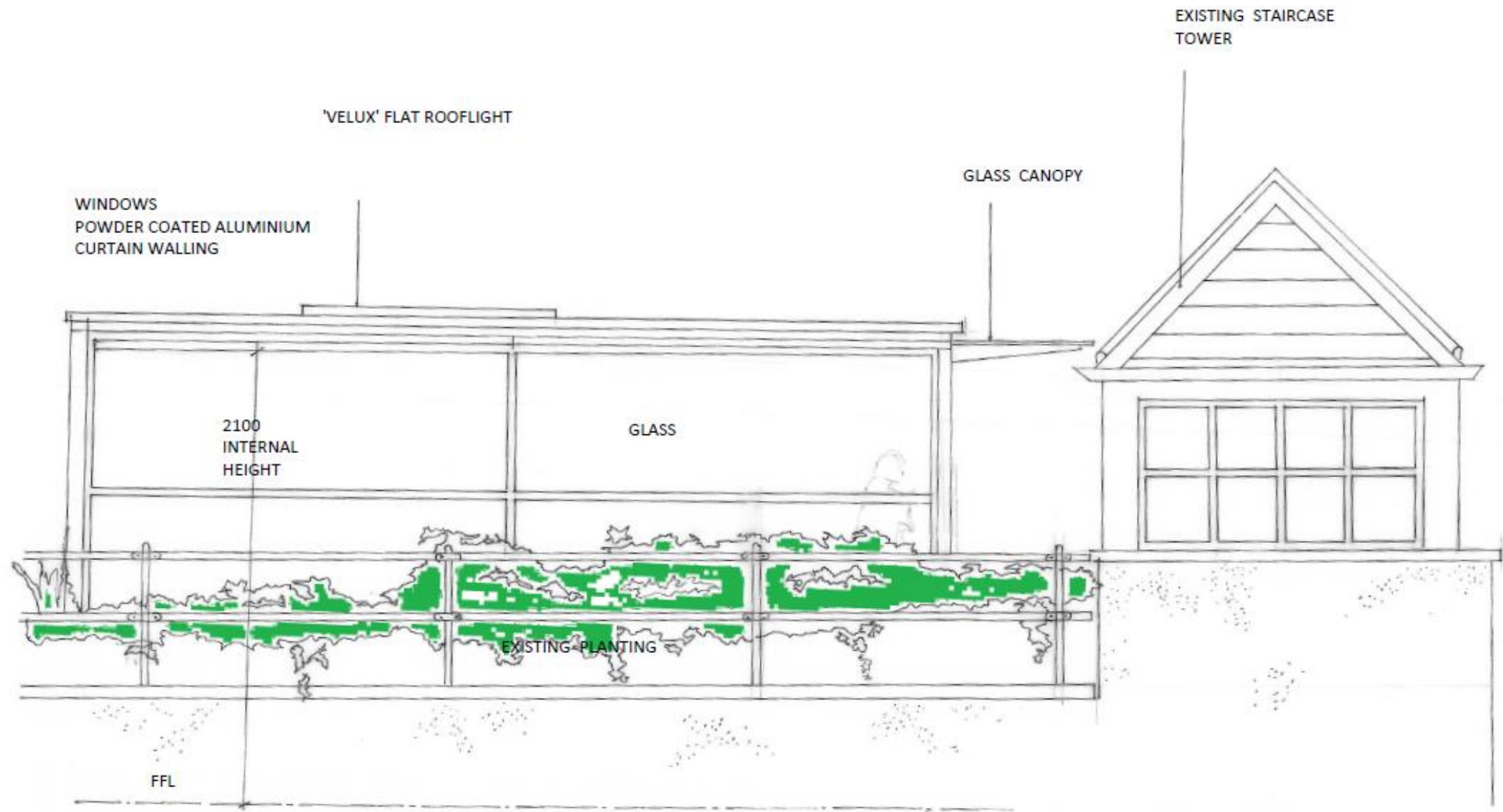




WEST ELEVATION  
3 WHITE POINT: SOUTHWOLD

1:20 @A3

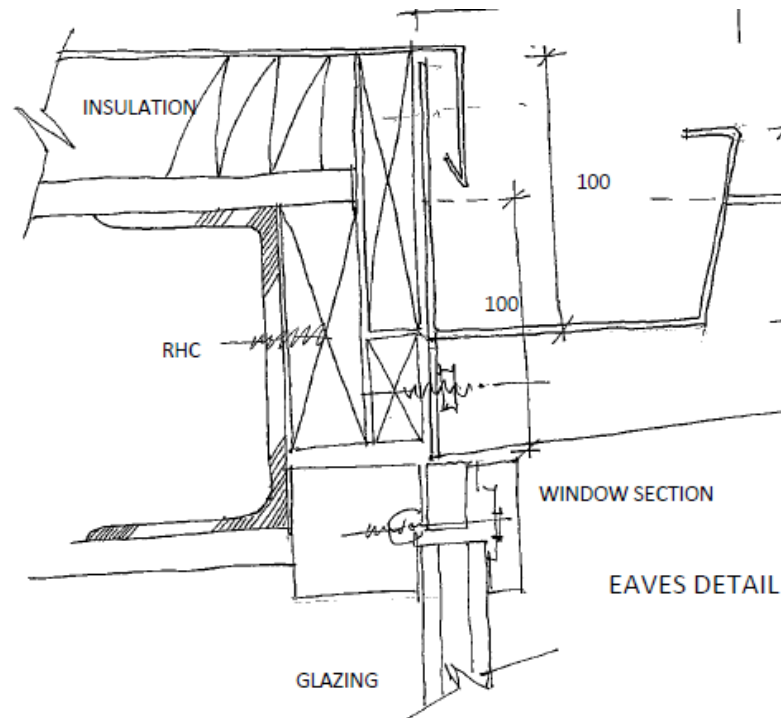
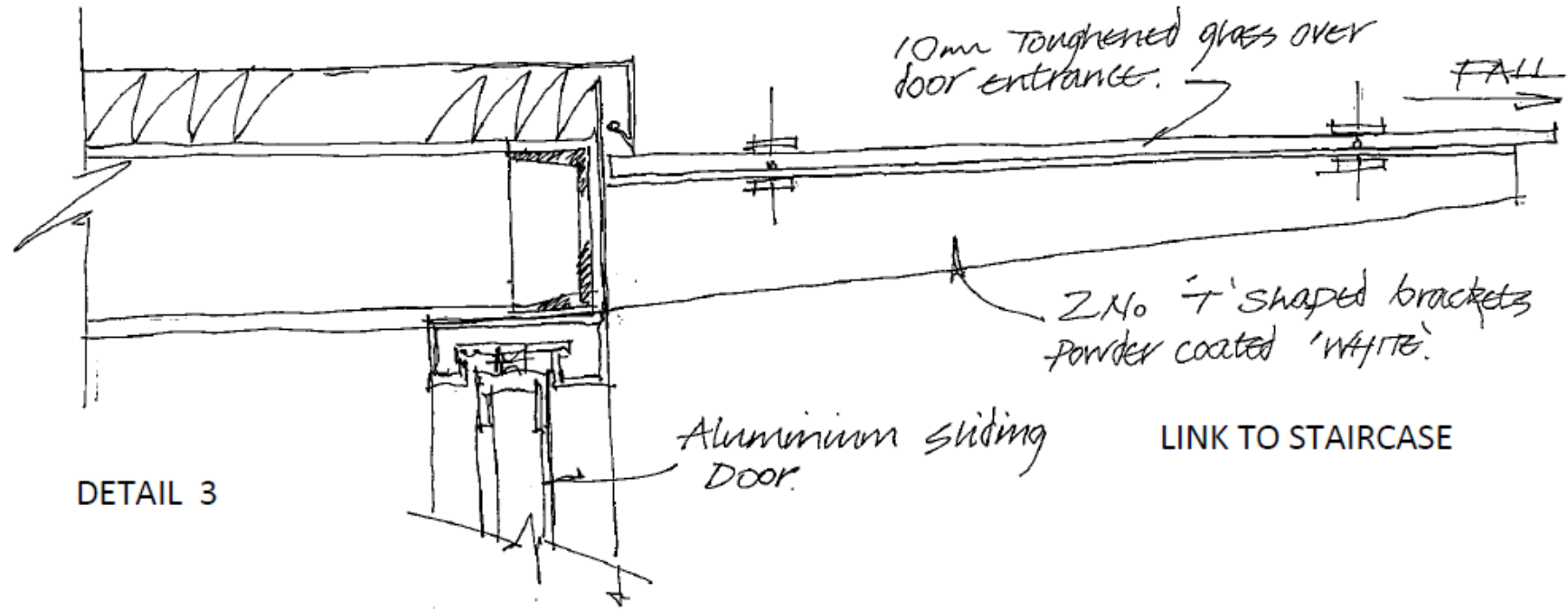
DRG 04



NORTH EAST ELEVATION  
3 WHITE POINT : SOUTHWOLD

1:20 @ A3

DRG 03





# Material Considerations and Key Issues

- Design and Conservation Area impact
- Residential amenity
- As-Built development compared to the approved scheme

# Recommendation

**Approve with conditions; as recommended on page 172 of the Committee Report.**