

Item: 6

DC/20/1049/VOC

Variation of Conditions 4 and 6 of DC/17/3981/OUT –
Construction of up to 200 dwellings

Land south of Chediston Street, Halesworth



Site Location Plan



Photographs



Location of approved
roundabout



Location of
approved
roundabout



Proposed revised access
point on Roman Way



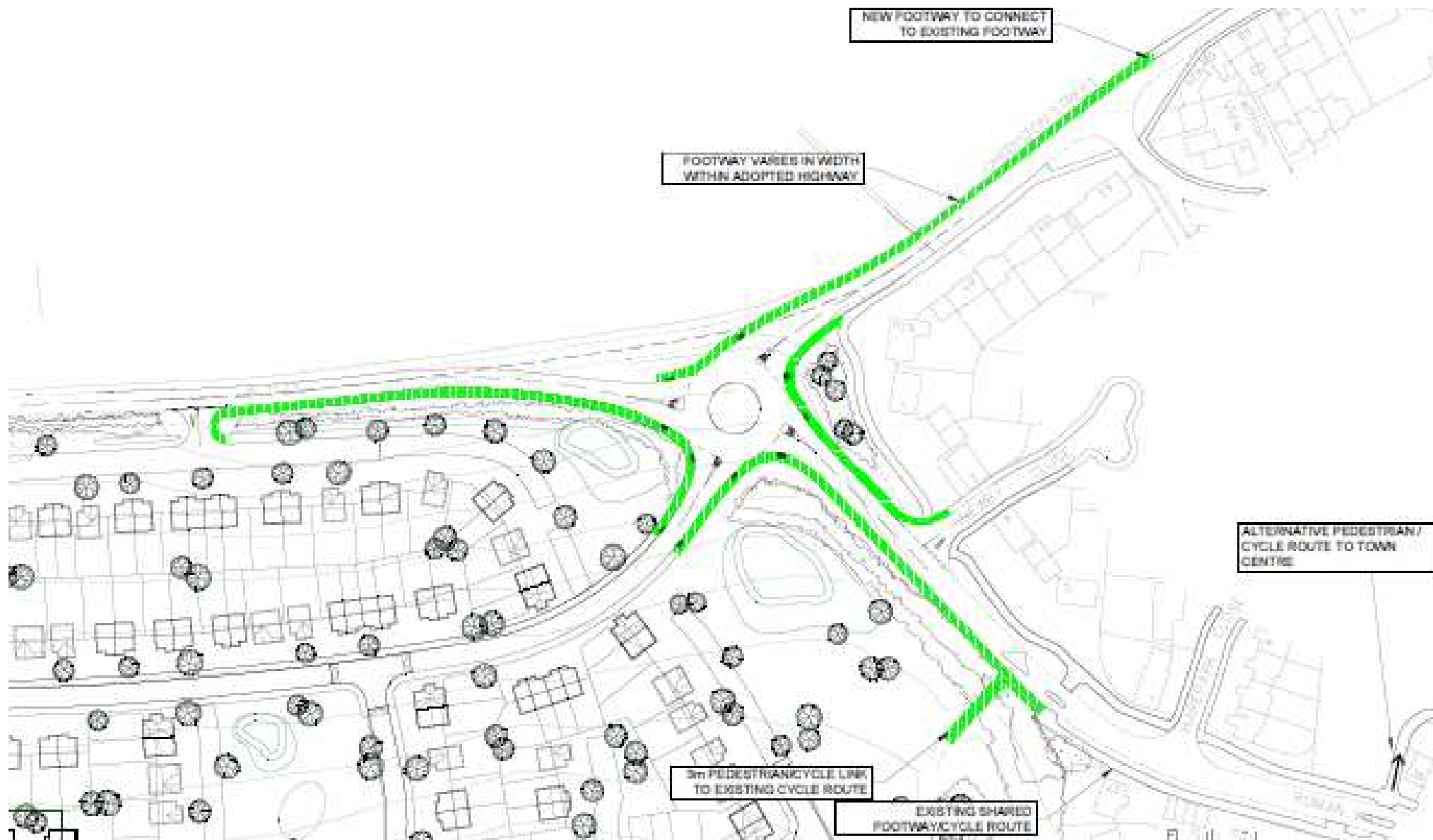
View of Proposed Access Point



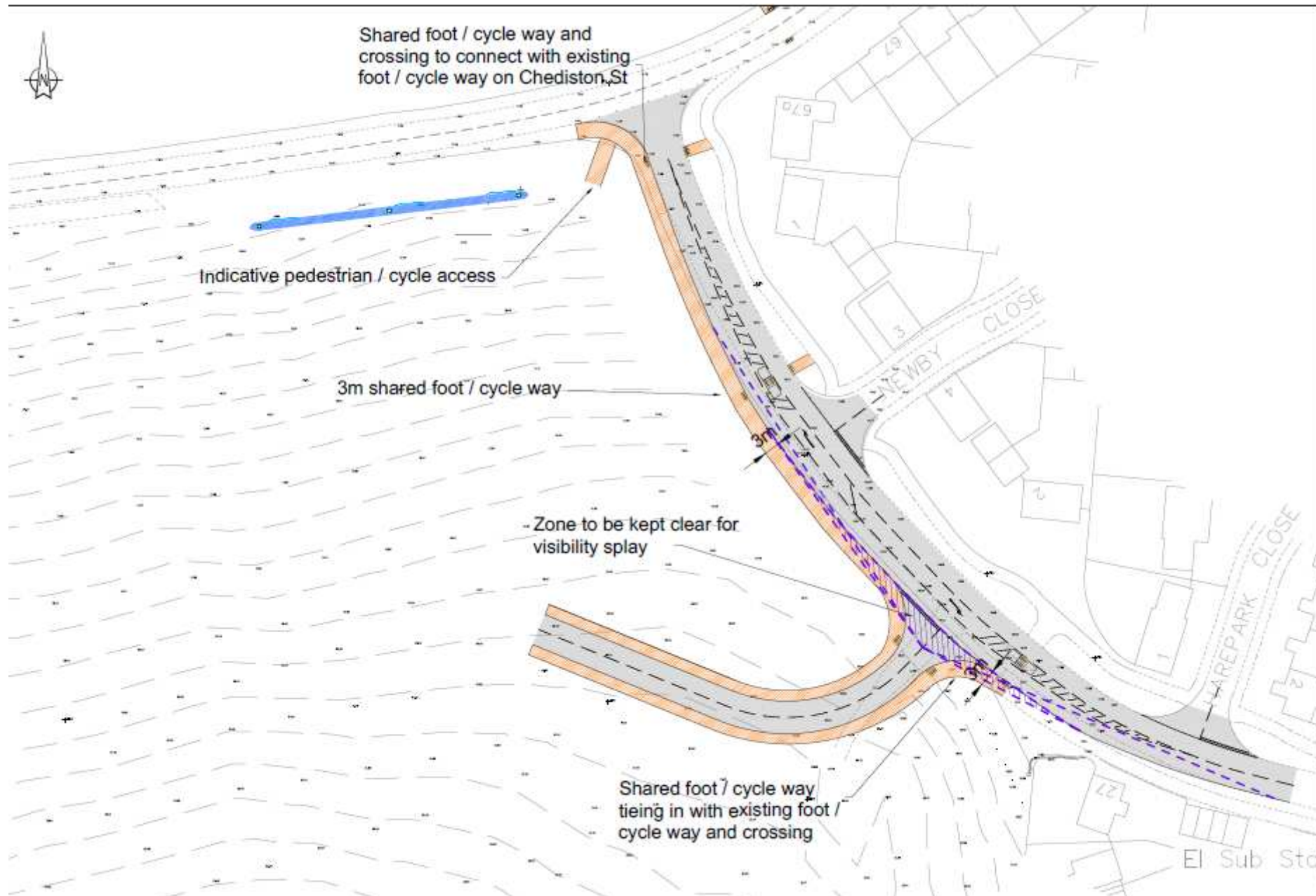
View south-east along
Roman Way from
proposed access point



View north along
Roman Way from
proposed access
point towards
Chediston Street




Roundabout
approved under
DC/17/3981/OUT



Proposed revised access

Material Planning Considerations and Key Issues

- Highway Issues:
 - - Traffic Survey
 - - Junction Capacity/congestion
 - Ecology
- 
- A teal-colored decorative shape, resembling a stylized hill or a wedge, is located in the bottom right corner of the slide.

Recommendation

Approve subject to a variation of the S106 Agreement and the conditions outlined in the report



