

Item 9:

DC/23/2832/RG3

Public realm / landscaping works at Royal Plain; Royal Green; and South Quay, Lowestoft.



Site Location Plan





Royal Plain



Royal Plain



Royal Plain



Royal Plain



Royal Green



Royal Green



Royal Green



Royal Green



South Quay



South Quay



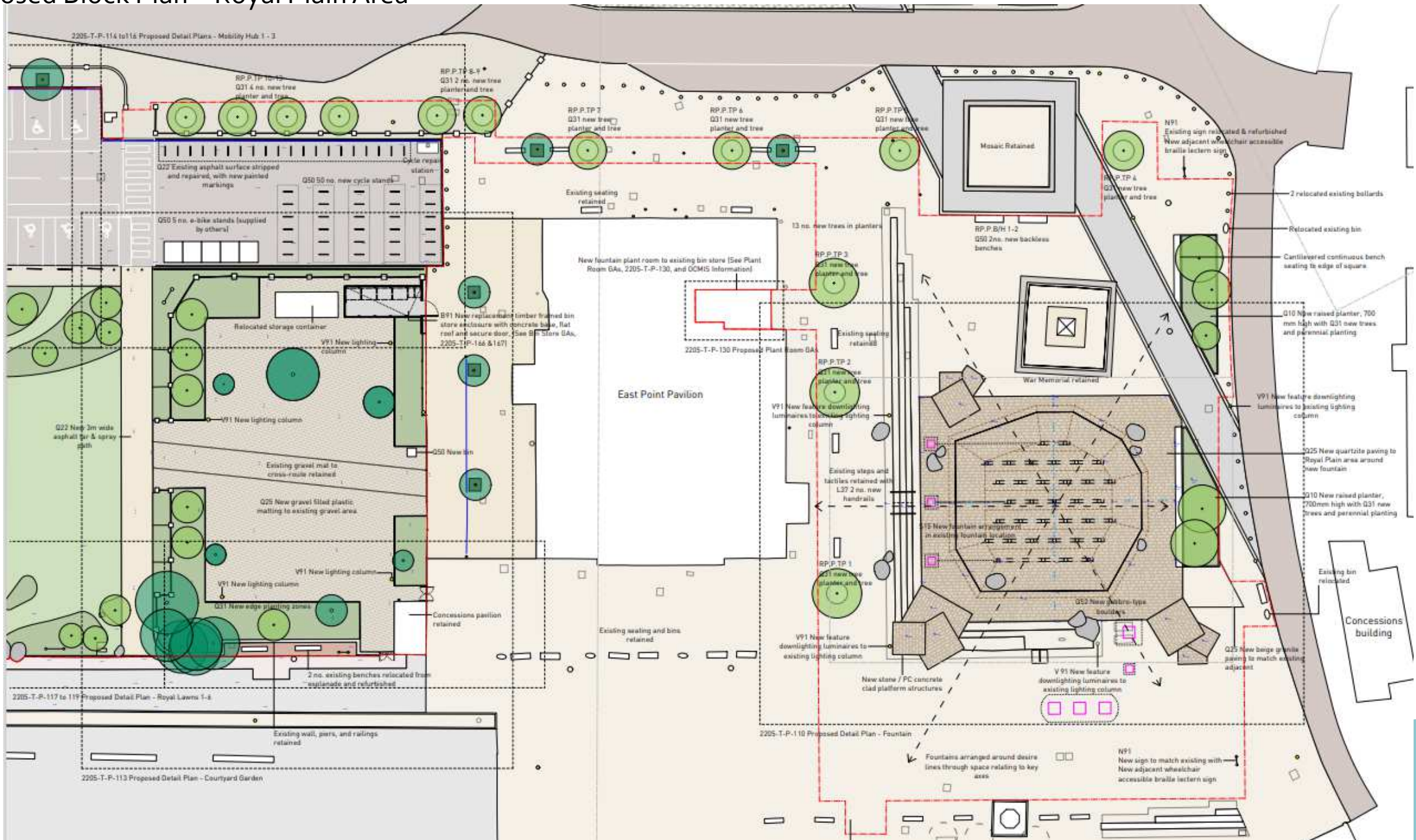
South Quay



South Quay



Proposed Block Plan – Royal Plain Area



Proposed Visuals – Royal Plain Area

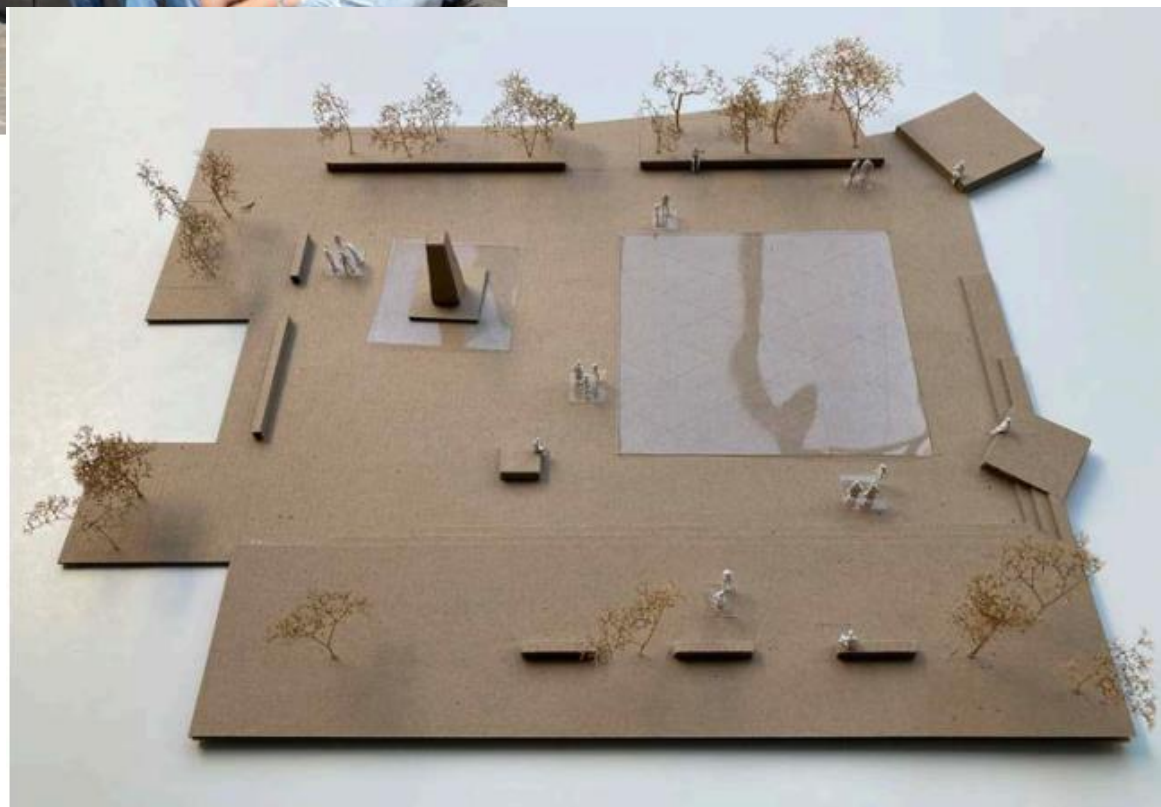




Raised planter edges to fountain space. north side



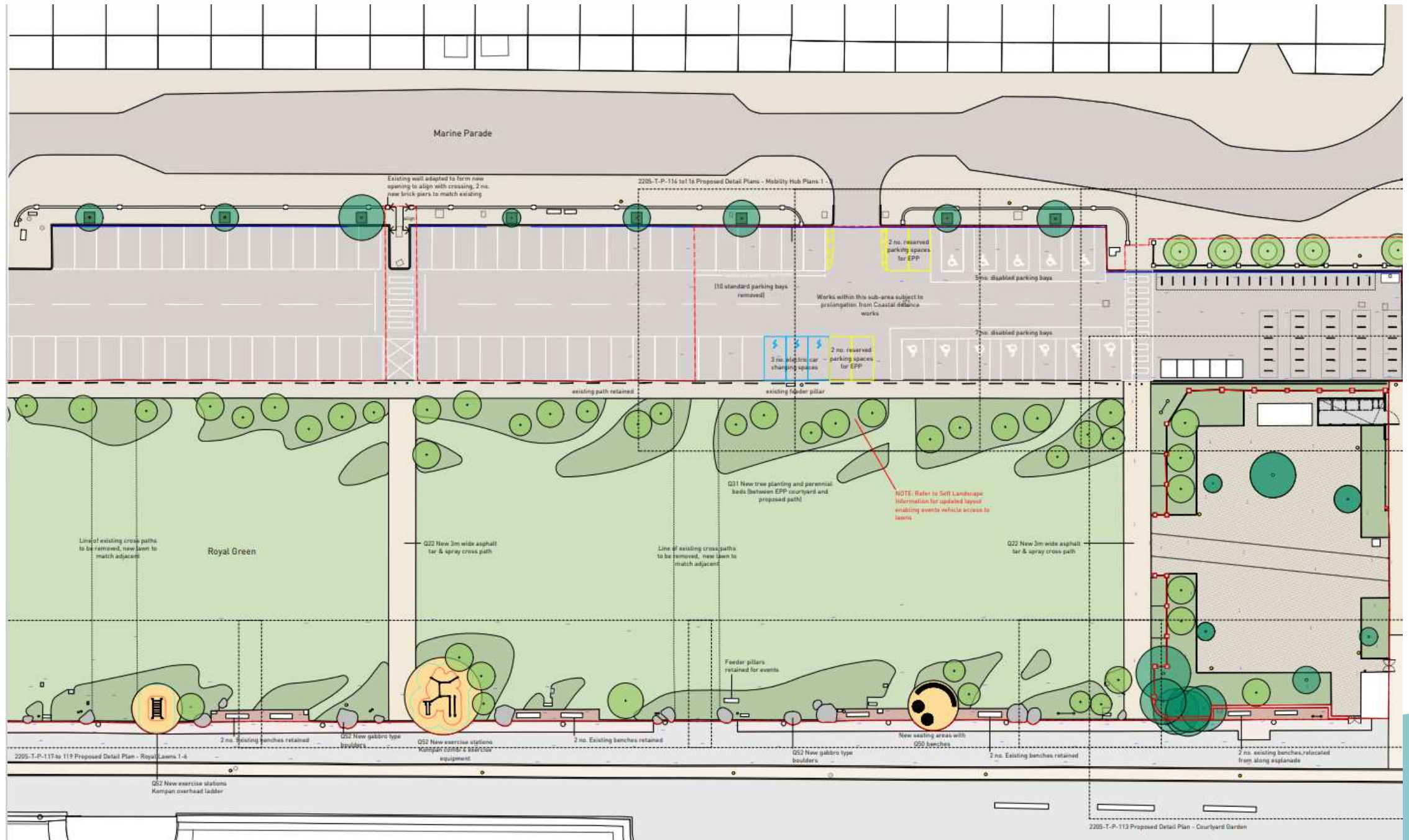
Material samples (WIP) - grey and beige granites, and porphyrys



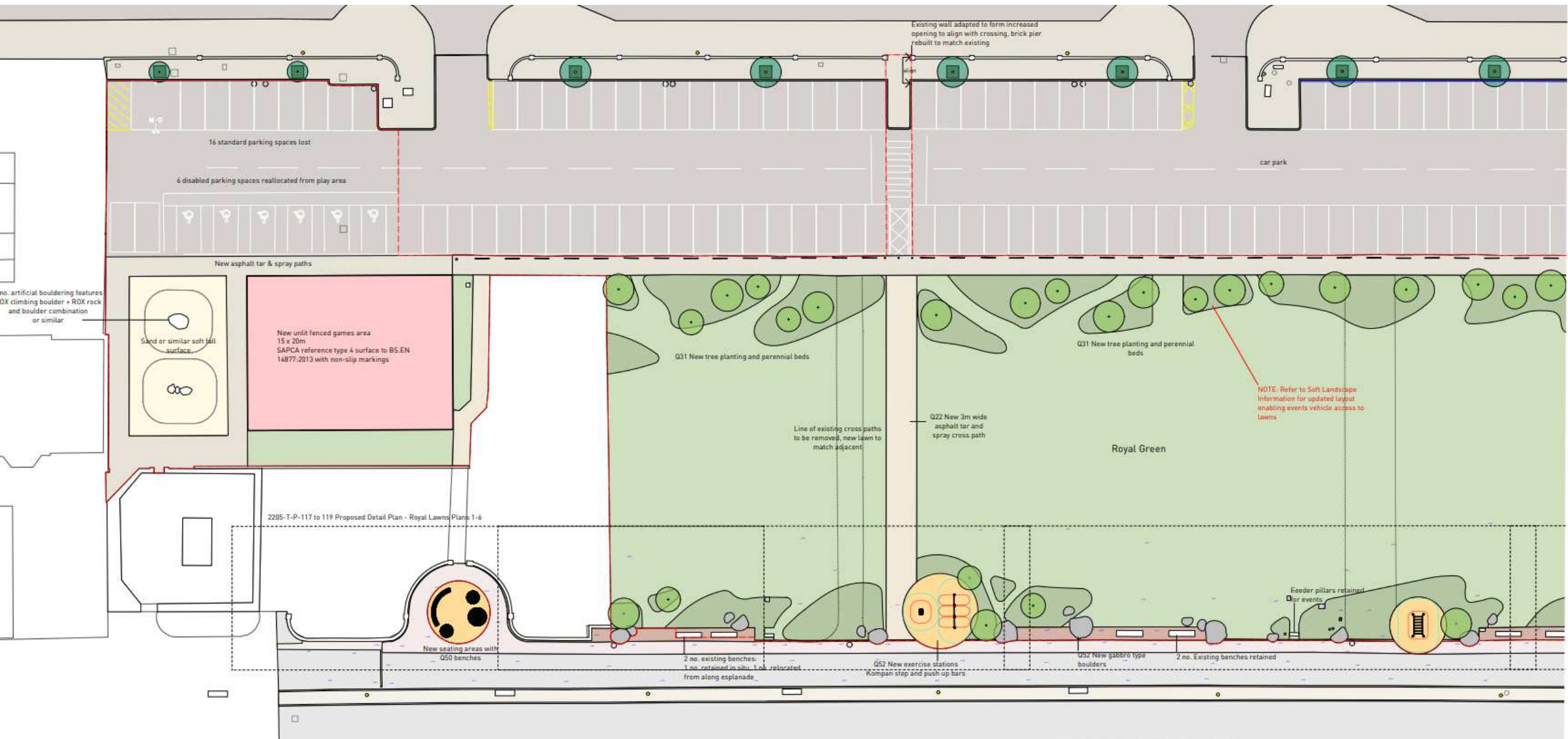
Royal Plain study model, showing new and existing seating around edges, with tree planting



Proposed Block Plan – Royal Green Area



Proposed Block Plan – Royal Green Area





Informal esplanade edge with seating set amongst coastal perennial planting



Outdoor fixed gym equipment (Kompan) - as proposed along esplanade edge



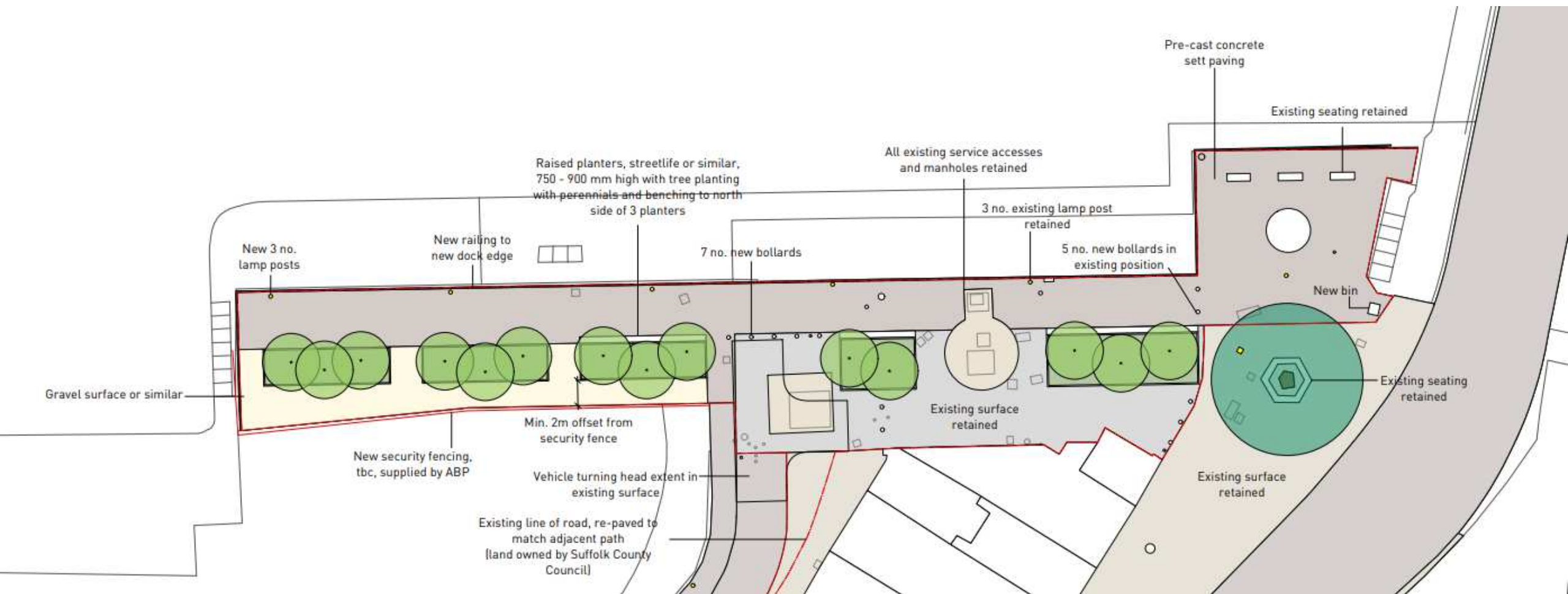
Play for older children - like new facilities proposed to south end of Royal Green



Proposed Visual – Royal Green Area



Proposed Block Plan – South Quay





Raised planters with integral seating (Streetlife)



Material samples (WIP) - precast concretes and resin bonded gravels



Proposed Visual – South Quay







Key Issues and Material Considerations

- Principle of Development
- Conservation Area and Setting of Listed Buildings
- Public Realm Improvements and Community Benefit

Recommendation

Authority to Approve,

subject to any final (minor) design revisions; and receipt of comments from the Local Lead Flood Authority (LLFA) and Suffolk Highways Authority confirming no objections.

Conditions (summarised) as per the published Update Sheet.

- Three-year time limit to commence development;
- Development to be carried out in accordance with the approved plans;
- Full planting details including implementation and long-term management;
- Full details of floor finish, boundaries etc for the new bouldering area and a new fenced games area in place of the existing car park to the south end of Royal Green.
- Implementation of mitigation and enhancement measures within the Preliminary Ecological Appraisal; and
- Any conditions recommended by the Highways Authority and LLFA (where appropriate and applicable).