



## Felixstowe Peninsula Community Partnership Meeting

Tuesday 12 March 2024, 2pm

Trimley Sports and Social Club, High Road, Trimley St Martin, IP11 0RJ

---

### Partnership Priorities

- Supporting the community through the challenges relating to the rising cost of living and fuel.
  - Improving the physical health and wellbeing of primary school children.
  - Increase physical and social activity in adults
- 

### Meeting Goals

1. To consider the decisions made at the CP Board meeting on 7 March 2024 and any issues to escalate to the next Board meeting.
2. To review and establish the CP's priorities for the year ahead.
3. To agree potential projects to tackle our three agreed priorities, including what the CP wants to achieve, and who will lead these.

Standing Items		Lead	Supporting papers
1	Action Notes ( <i>5 minutes</i> )	Matt Makin, ESC Democratic Services Officer	Attached
2	Where are we now? ( <i>15 minutes</i> ) <ul style="list-style-type: none"><li>• Community Partnership Board Update</li></ul> <p><i>Does the CP want to escalate anything to the next CP Board meeting?</i></p> <p><i>Are there opportunities to work with the Board/other CPs on specific projects?</i></p>	Nicole Rickard, ESC Head of Communities and Leisure	To follow

3	<p>Workshop Session</p> <ul style="list-style-type: none"> <li>• 2023 round up of projects and updates.</li> <li>• A look at our refreshed data pack.</li> <li>• Group discussions (2's or 3's) on new priorities and 'diamond 9'</li> <li>• Final discussion and vote for top 3 priorities.</li> </ul> <p>Next steps:</p> <ul style="list-style-type: none"> <li>• Develop details of new priorities and make them SMART</li> </ul> <p>Identify who is best placed to deliver project(s) and what needs to happen between now and the next meeting.</p>	All (facilitated by Chloe)	Attached
4	Date of next meeting – to be confirmed	All	None

<p><b>Chair:</b> Rosie Smithson (East Suffolk Council)</p> <p><b>Vice-Chair:</b> Shez Hopkins (Level Two Youth Project)</p> <p><b>Communities Officer:</b> Chloe Lee  <a href="mailto:chloe.lee@eastsoffolk.gov.uk">chloe.lee@eastsoffolk.gov.uk</a></p>	<p><b>Partnership Organisations:</b></p> <p>East Suffolk Council  Suffolk County Council  Local Town and Parish Councils  Suffolk Constabulary  Ipswich and East Suffolk Clinical Commissioning Group  Community Action Suffolk  Felixstowe Forward  Business Community  Youth Community  Environment</p>
--	---

**Filming, Videoing, Photography and Audio Recording at Partnership Meetings**

Members of the partnership may record / film / photograph or broadcast this meeting.

The Council cannot guarantee public seating areas will not be filmed or recorded. By entering the Conference Room and sitting in the public seating area, those present will be deemed to have consented to the possible use of filmed images and sound recordings. If you do not wish to be recorded, please speak to a member of the Democratic Services team at the earliest opportunity.

If you require this document in large print, audio or Braille or in a different language, please contact the Democratic Services Team on 01502 523521 or email:  
[democraticservices@eastsoffolk.gov.uk](mailto:democraticservices@eastsoffolk.gov.uk)



## **Felixstowe Peninsula Community Partnership**

### **Action Notes of the Meeting held on Monday 4 December 2023, 10.30am at Felixstowe Library**

#### Core Membership present:

ESC Councillors – Seamus Bennett, Jan Candy, Mike Deacon, Amanda Folley, Mark Jepson, Lee Reeves, Rosie Smithson (CP Chair).

SCC Councillors – Stuart Bird.

Town and Parish Councils – Ann Colvill (Kirton and Falkenham Parish Council), Rhea Gardner (Buckleham Parish Council), Colin Reid (Waldringfield Parish Council), Michael Sharman (Felixstowe Town Council), Yvonne Smart (Trimley St Martin Parish Council), Ash Tadjrishi (Felixstowe Town Council Clerk).

Partnership Organisations – Paul Borroughs (Felixstowe Chamber of Trade and Commerce), Shez Hopkins (Level Two Youth Project & CP Vice-Chair), Sarah Wilson (Community Representative).

Others present – Jo Belfield (ESC Communities Officer), Luke Bennett (ESC Partnerships Manager), Liss Coates (Pushchair Pitstop), Rebecca Foster (ESC Financial Inclusion Officer), Chloe Lee (ESC Communities Officer), Matt Makin (ESC Democratic Services Officer), Agnes Ogundiran (ESC Political Group Support Officer).

Apologies for absence received – Cathy Couchman (Waldringfield Parish Council), Mike Ninmey (East Suffolk Council), Hayley Stearn (Felixstowe Connect INT).

<b>Item</b>	<b>Discussion</b>
<b>1.</b>	<b>Action Notes</b>  The action notes were agreed by consensus and the Community Partnership received updates on the actions agreed.
<b>2.</b>	<b>Community Partnership Board Update</b>  Luke Bennett (LB) summarised the report circulated with the meeting agenda, which gave an update on the most recent meeting of the Community Partnership Board.

	<p>LB added that the Board would be a statutory consultee for the UK Shared Prosperity Fund.</p> <p>LB encouraged everyone to attend the Community Partnership Forum taking place at Trinity Park, near Ipswich on Friday 22 March 2024*.</p> <p>LB discussed an upcoming proposal for tackling inequalities work with the Community Partnership, which would be presented to the Board at its next meeting.</p> <p>*booking link - <a href="https://www.eelga.gov.uk/events/the-east-suffolk-community-partnership-annual-forum/">https://www.eelga.gov.uk/events/the-east-suffolk-community-partnership-annual-forum/</a></p>
<p><b>3.</b></p>	<p><b>Current Projects Update</b></p> <p>Chloe Lee (CL) invited the task and finish groups to provide updates on their work since the last meeting.</p> <p><u>Active Adult/Active Youth (Sarah Wilson)</u></p> <ul style="list-style-type: none"> <li>• Youth budget - £10,000 allocated for a youth forum, learning to swim, and the skate park project.</li> <li>• Adult budget – funding provided for Active Lives (curling and seated dancing), improvements to Felixstowe Bowls Club and Kirton &amp; Falkenham Bowls Club, £1,000 left to allocate.</li> <li>• Discussions took place on linking to Feel Good Suffolk – CL said she would take this away.</li> </ul> <p><b>ACTION</b> – CL to explore linking Active Adult/Active Youth to Feel Good Suffolk.</p> <p><u>Clothes Bank (Shez Hopkins)</u></p> <ul style="list-style-type: none"> <li>• Work continues on a prom/interview clothing bank, to offer to Felixstowe residents via Pushchair Pitstop during January and February 2024.</li> <li>• Working in partnership with Suffolk New College for fittings and alterations, as well as hair/beauty support for prom events.</li> </ul> <p><u>Health (Mark Jepson)</u></p> <ul style="list-style-type: none"> <li>• Orwell Hotel secured as a venue for the Health Fair.</li> <li>• Work continues to secure a sponsor for the event.</li> <li>• “Save the date” invitations have been distributed and early bookings are encouraging.</li> </ul>

<p><b>4.</b></p>	<p><b>Community issues, including Youth Voice themes</b></p> <p>Rosie Smithson (RS) commented on her disappointment in a lack of response from the CEO of the Unity Schools Partnership or Therese Coffey MP to her letter about the cost of uniform for Felixstowe School.</p> <p>Amanda Folley (AF) was concerned about the increase in homelessness in Felixstowe, highlighting one instance where a homeless person’s belongings were removed by East Suffolk Council and another where a homeless person felt intimidated by Council staff.</p>
<p><b>5.</b></p>	<p><b>Date of the next meeting</b></p> <p>4 March 2024, 1.00pm, Felixstowe Library.</p> <p>RS noted that this may change as the intention was for the next meeting to include a wider cross-section of the community to review and set the Community Partnership’s priorities for 2024/25.</p>
<p><b>6.</b></p>	<p><b>Review of Core Membership</b></p> <p>It was agreed by consensus that Liss Coates, from Pushchair Pitstop, would be added to the core membership.</p> <p><b>ACTION</b> – Liss Coates (Pushchair Pitstop) to be added to the core membership.</p>
<p><b>7.</b></p>	<p><b>Cost of living support – what can we do?</b></p> <p>CL presented a proposal the existing cost of living support fund be topped up to £10,000. This was proposed by Amanda Folley, seconded by Mike Deacon and by a unanimous vote <b>APPROVED</b>.</p> <p><b>ACTION</b> – Cost of living support fund to be topped up to £10,000.</p> <p>CL led the Community Partnership in a workshop exercise to identify other ways the Community Partnership could support the community in respect of cost of living.</p> <p>The attendees split into five groups to discuss possible options. Each group fed back to the meeting what they had identified:</p> <ul style="list-style-type: none"> <li>• Information leaflet, targeted to people not online or IT confident.</li> <li>• Strategic support for teenagers.</li> </ul>

- Co-ordination between existing projects in the community, to deliver collaborative projects and share information.
- Enhance the out of hours emergency phoneline for homeless/in-need people.
- Community car sharing scheme.
- Parish Pantry volunteering support scheme.
- Dental support (DentAid).
- A mobile pop-up shop for multi-agency support.
- Support for Felixstowe Town Council’s project for communication across the peninsula.
- Felixstowe Lions cots and beds project.
- Pilot scheme for heated ponchos, for people being discharged from hospital.

Following discussion, the following actions were agreed:

**ACTION** – £3,000 to be allocated to produce and distribute a cost of living support information leaflet and £10,000 to be allocated for the “Push the Limits” project (proposed by Jan Candy, seconded by Seamus Bennett, agreed unanimously).

**ACTION** – Chloe Lee to contact rural parish clerks regarding the distribution of information leaflets.

**ACTION** – The Community Partnership to revisit support to high schools when reviewing its priorities at the next meeting.

**ACTION** – Mark Jepson to investigate community co-ordination via COMPASS.

**ACTION** – Rosie Smithson to investigate heated ponchos.

The meeting concluded at 12.40pm.



## Felixstowe Peninsula Community Partnership

### **Action Notes of the Follow Up Meeting held on Wednesday 20 December 2023, 9.30am via Microsoft Teams**

Core Membership present:

ESC Councillors – Seamus Bennett, Mark Jepson, Lee Reeves, Rosie Smithson (CP Chair).

Partnership Organisations – Hayley Stearn (Felixstowe Connect INT)

Others present – Chloe Lee (ESC Communities Officer), Matt Makin (ESC Democratic Services Officer)

Apologies for absence received – Paul Borrourghs (Felixstowe Chamber of Trade and Commerce), Jan Candy (East Suffolk Council), Ann Colvill, Colin Reid (Waldringfield Parish Council), Yvonne Smart (Trimley St Martin Parish Council), Sarah Wilson (Community Representative)

Item	Discussion
<b>1.</b>	<p><b>Lions Club funding proposal</b></p> <p>Rosie Smithson (RS) summarised a funding request from the Felixstowe Lions Club, to support a pilot project related to improving sleep for families.</p> <p>This project had been discussed at the meeting on 4 December 2023 where it was noted that Pushchair Pitstop ran a similar project; it had since been established the latter was not a comparable project.</p> <p>Chloe Lee (CL) discussed the importance of this project and gave examples of families in the Community Partnership area that would benefit from it.</p> <p>Following general discussion, it was agreed by consensus (including written support from Jan Candy) that the project would be supported, pending a formal outcome proposal being submitted and approved.</p> <p><b>ACTION</b> – to support the Felixstowe Lions Club pilot project, pending the submission and approval of a formal outcome proposal.</p>

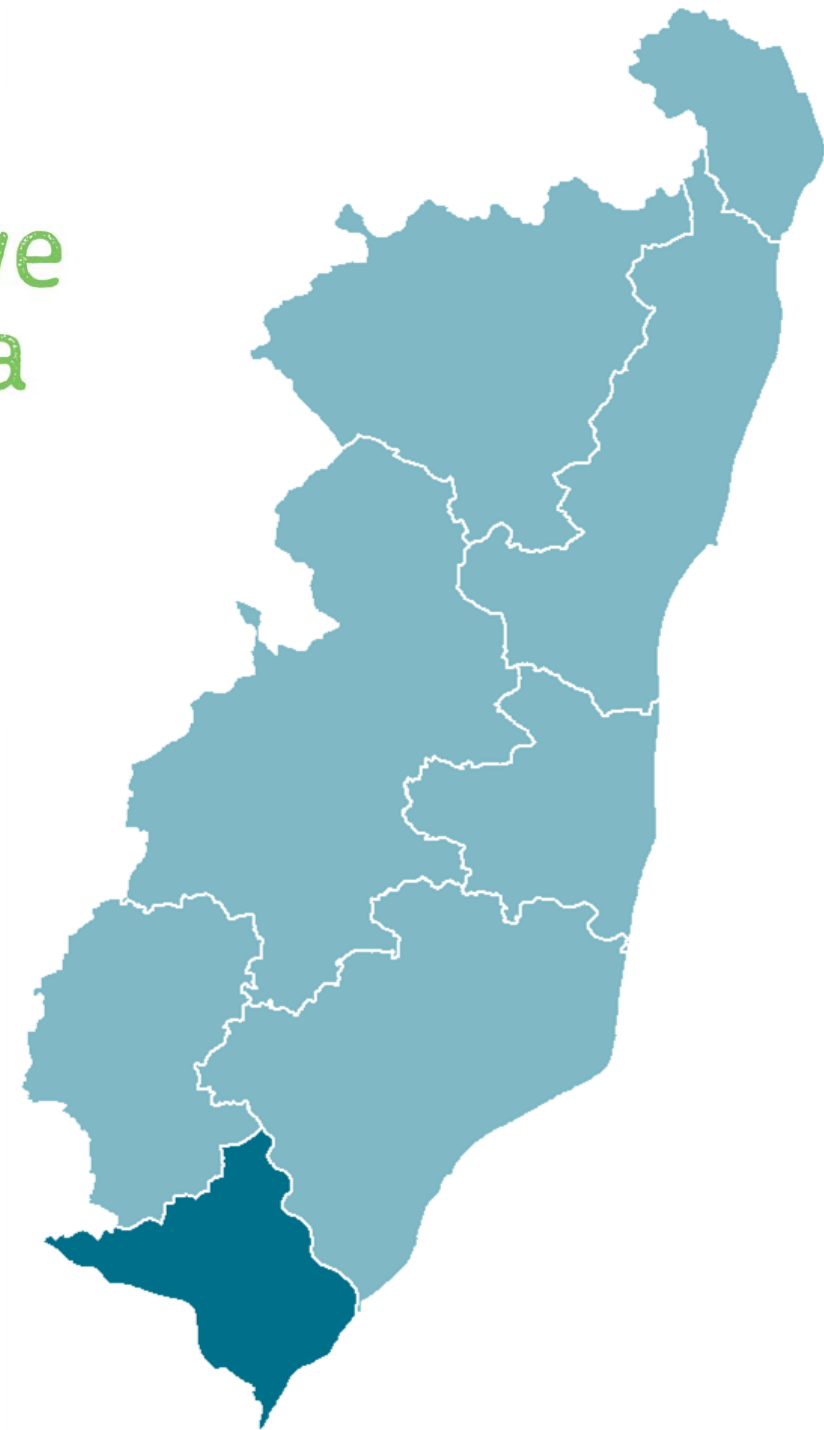
The meeting concluded at 9.50am.



East Suffolk  
Community  
Partnerships

*Bringing ideas to life*

Felixstowe  
Peninsula



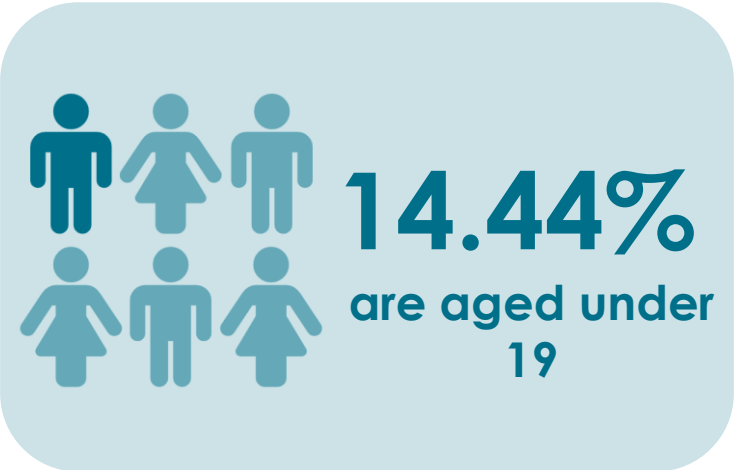
# Data profile

2023/24

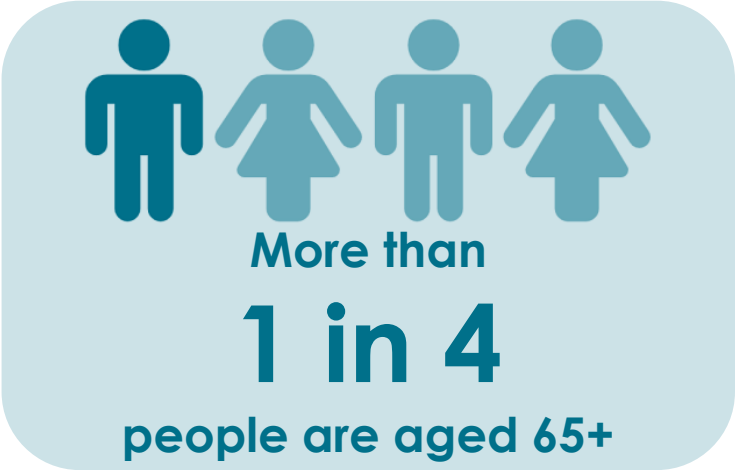


# Population

## Key facts



15.5%; East Suffolk average



29.2%; East Suffolk average 27.7%



4.3% of total population; national average 2.5%

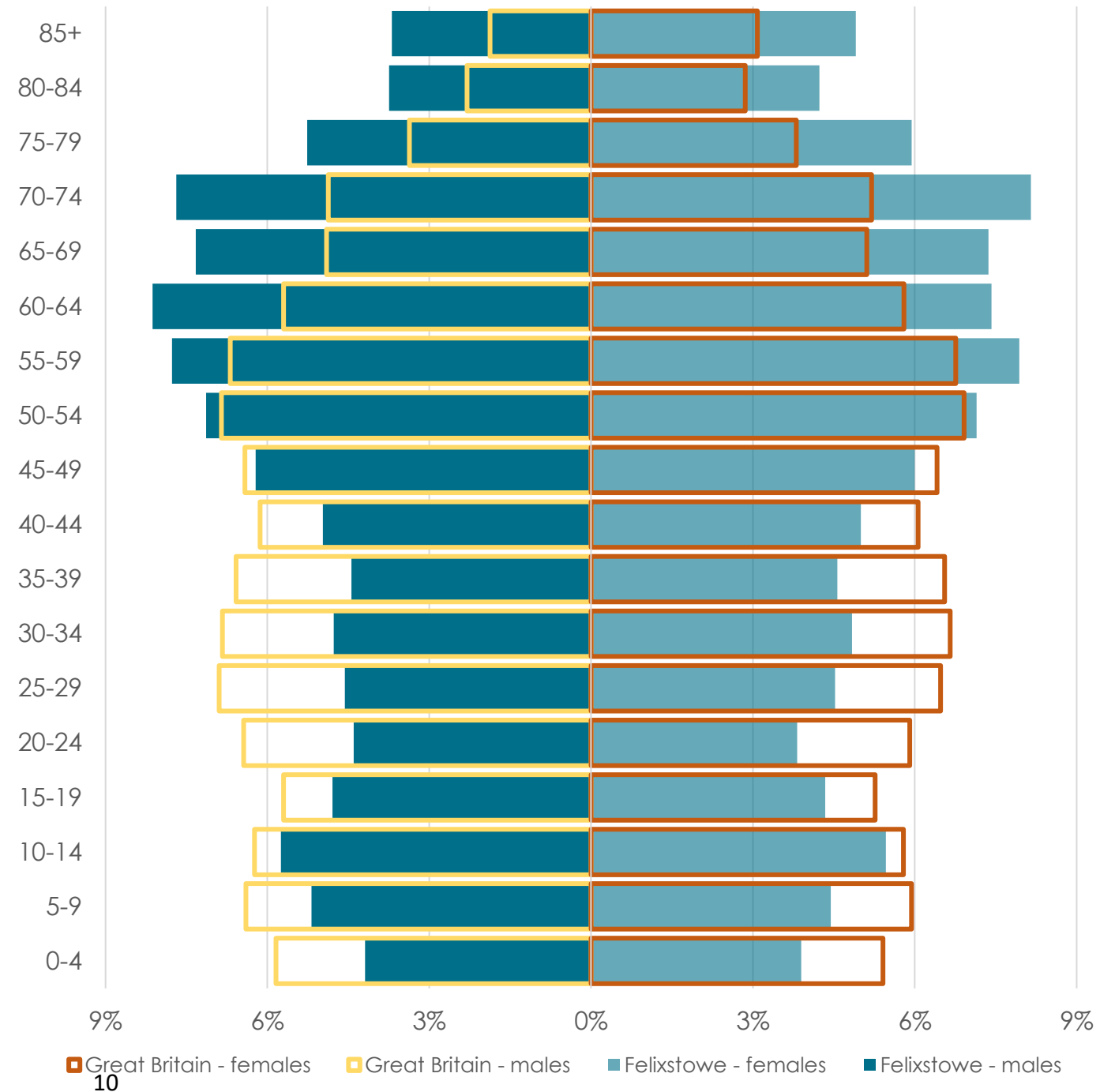
# Population Age breakdown

The age pyramid shows the age breakdown of the population of Felixstowe Pensinsula against the national average

Most over-represented age group: **85+**

Most under-represented age group: **20-24**

All groups below the age of 50 account for a smaller proportion of the Felixstowe Peninsula population than they do across Great Britain as a whole



# Deprivation

## Key facts



**3,434**

people affected by  
income deprivation

9.8%

Suffolk average 10.2%



**9.4%**

of working age people  
affected by  
employment  
deprivation

Suffolk average 8.3%  
1,730 people



**730**

children affected by  
income deprivation

13.4%

Suffolk average 13.6%



**941**

older people affected  
by income deprivation

9.2%

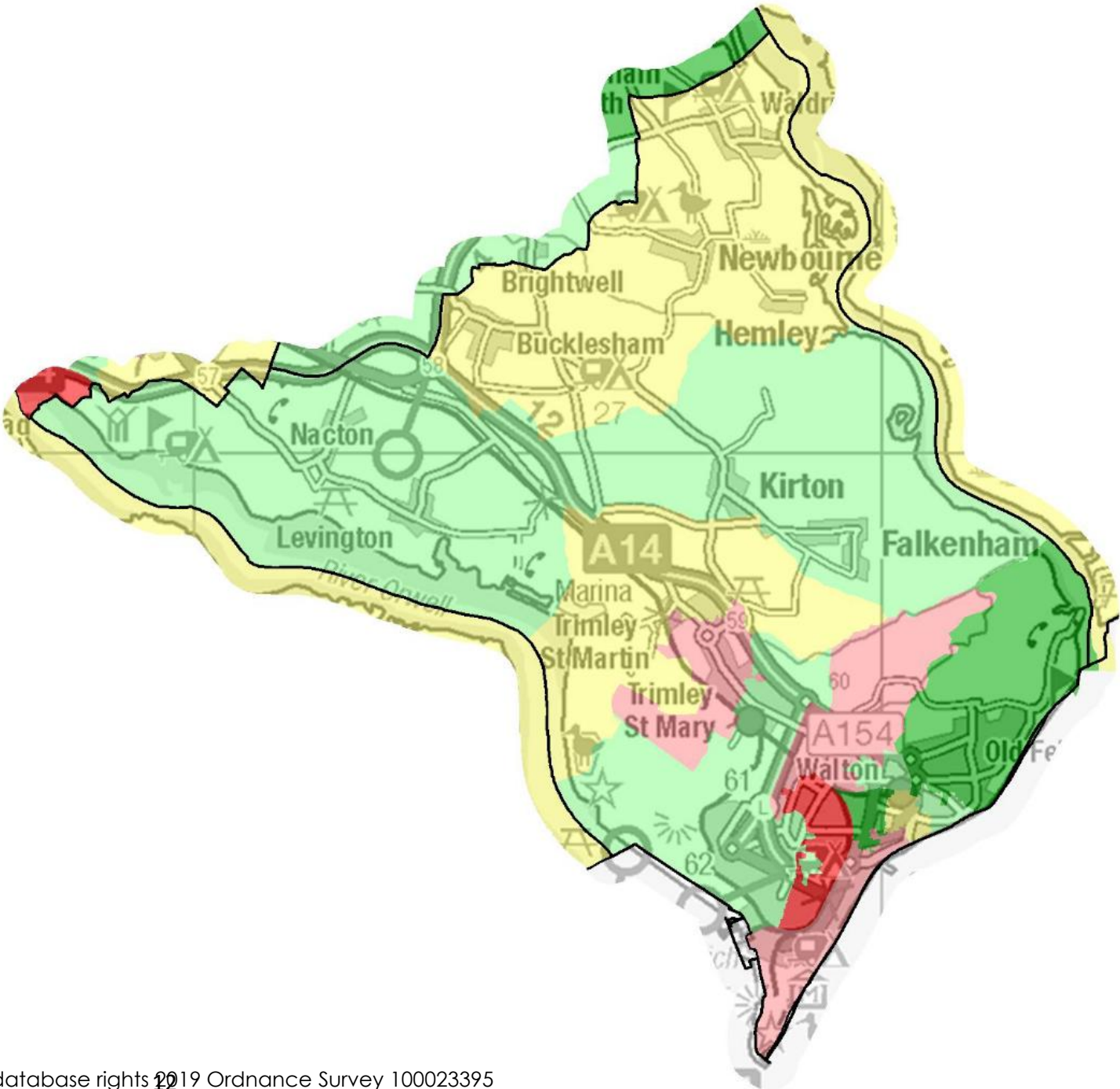
Suffolk average 10.2%

Source: DCLG Index of Multiple Deprivation 2019 and ONS 2020 mid-year population estimates  
English indices of deprivation – GOV.UK

# Deprivation Overall

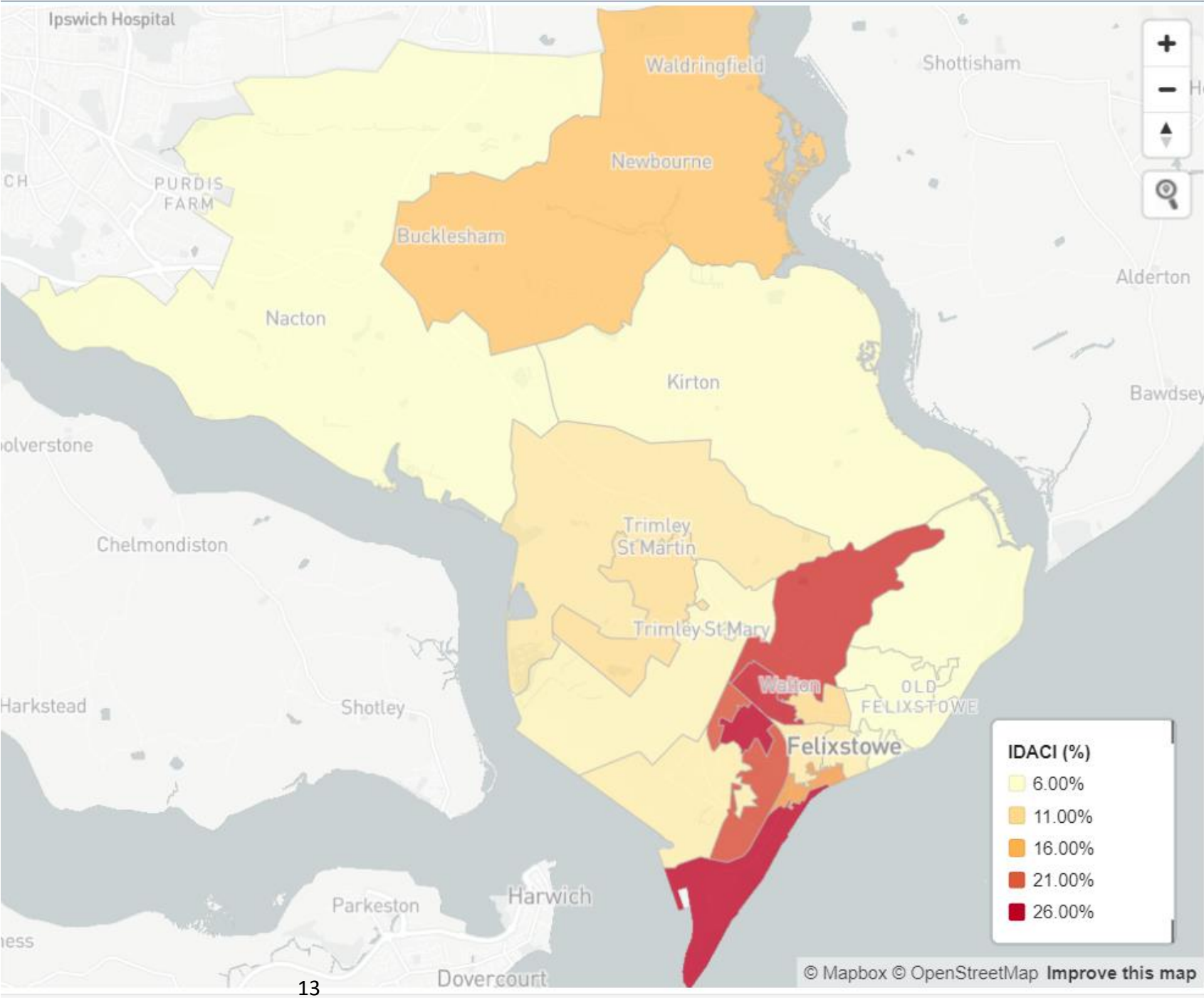
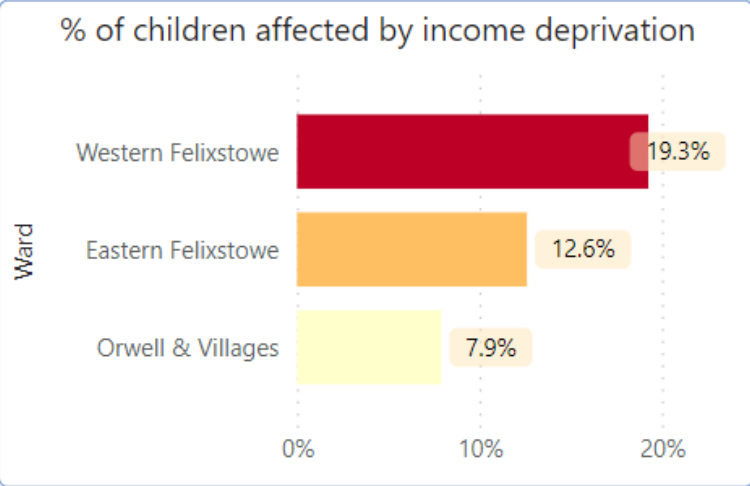
IMD quintile	Population	% of population
1	3,300	10%
2	9,620	28%
3	4,580	13%
4	10,010	29%
5	6,830	20%

1 = most deprived 20% of areas in England  
 5 = least deprived 20% of areas in England



# Deprivation Children

**13.4%**  
 Children affected by income deprivation  
 Suffolk average 13.6%

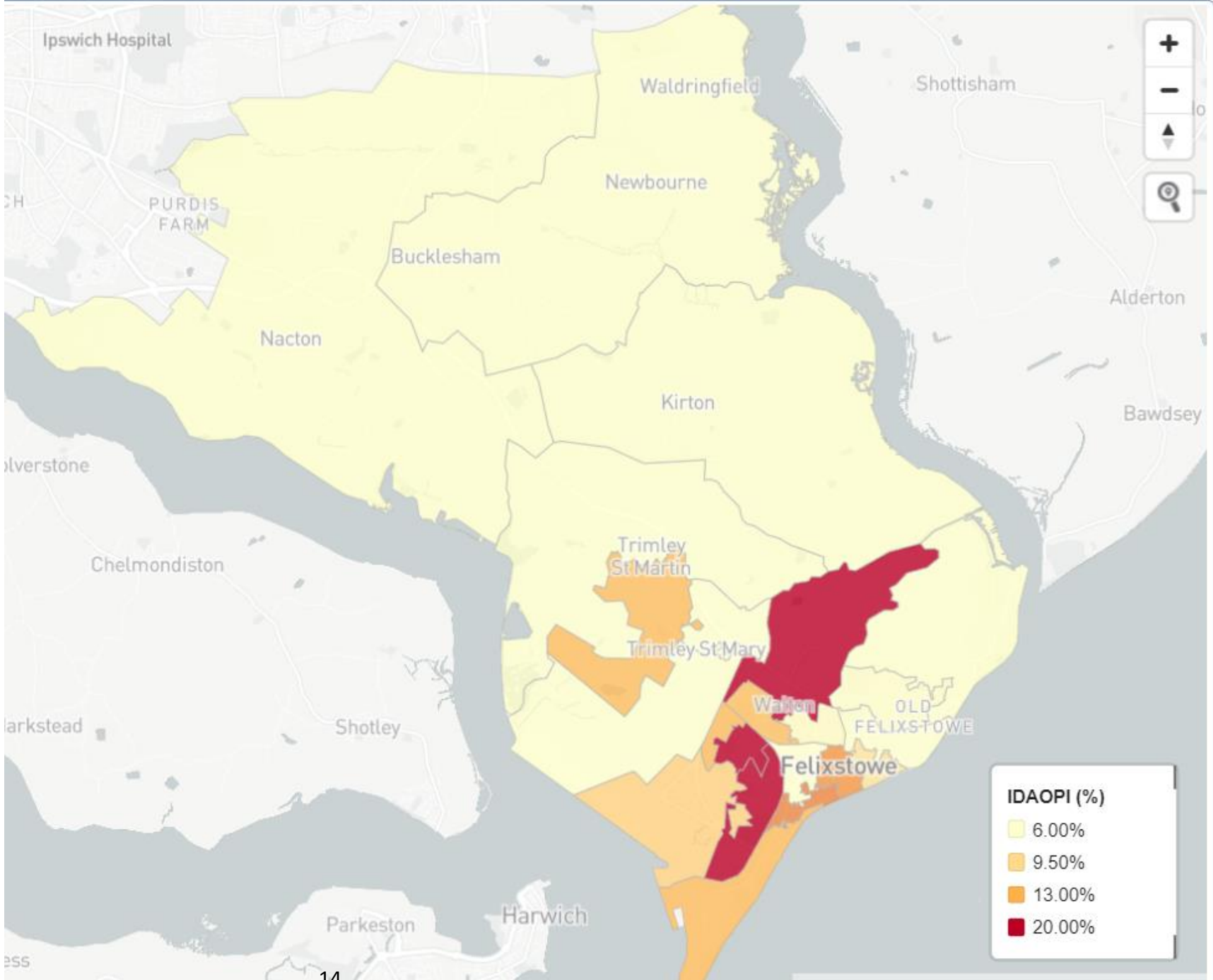
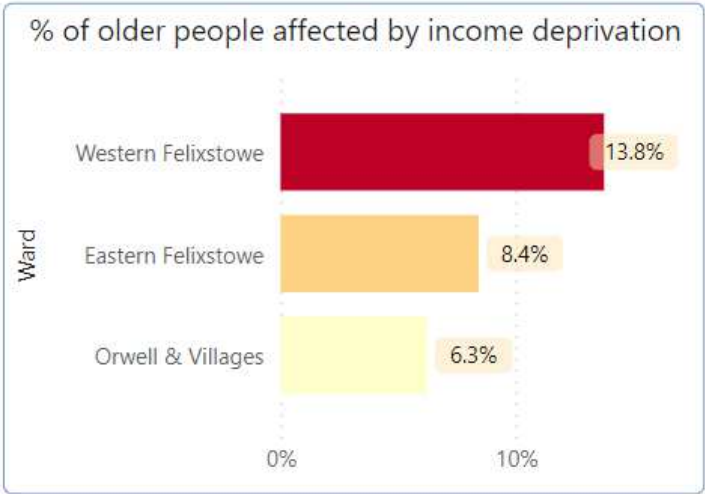


Sources: English indices of deprivation – GOV.UK



# Deprivation Older people

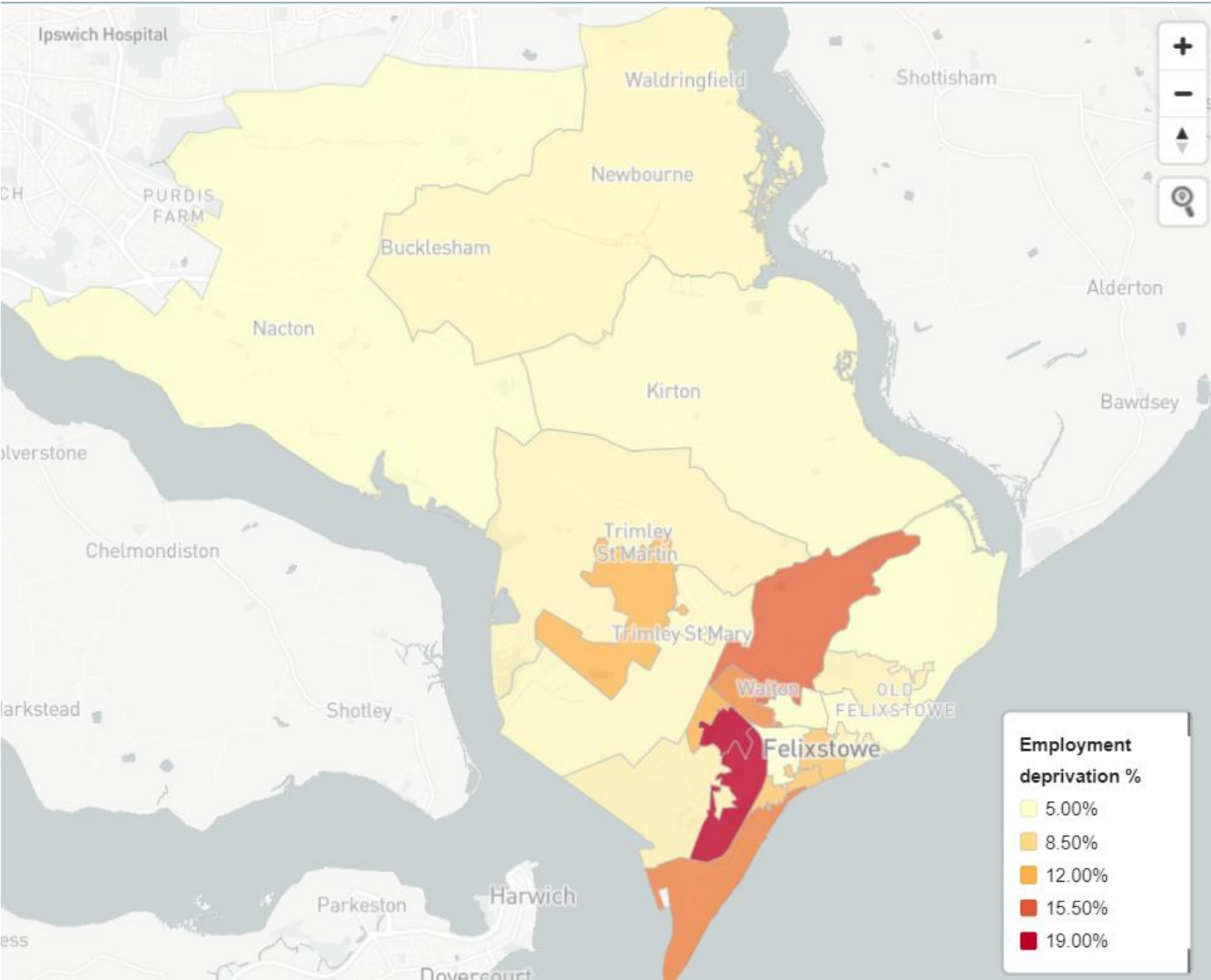
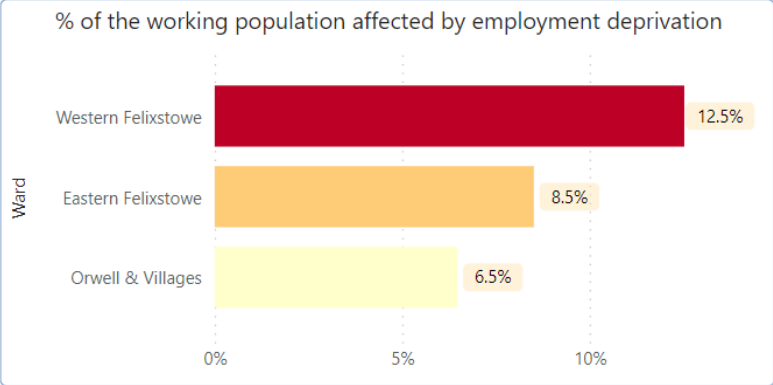
**9.2%**  
older people affected by  
income deprivation  
**Suffolk average 10.2%**



Sources: English indices of deprivation – GOV.UK

# Deprivation Employment

**9.4%**  
working people affected by  
income deprivation  
**Suffolk average 8.3%**

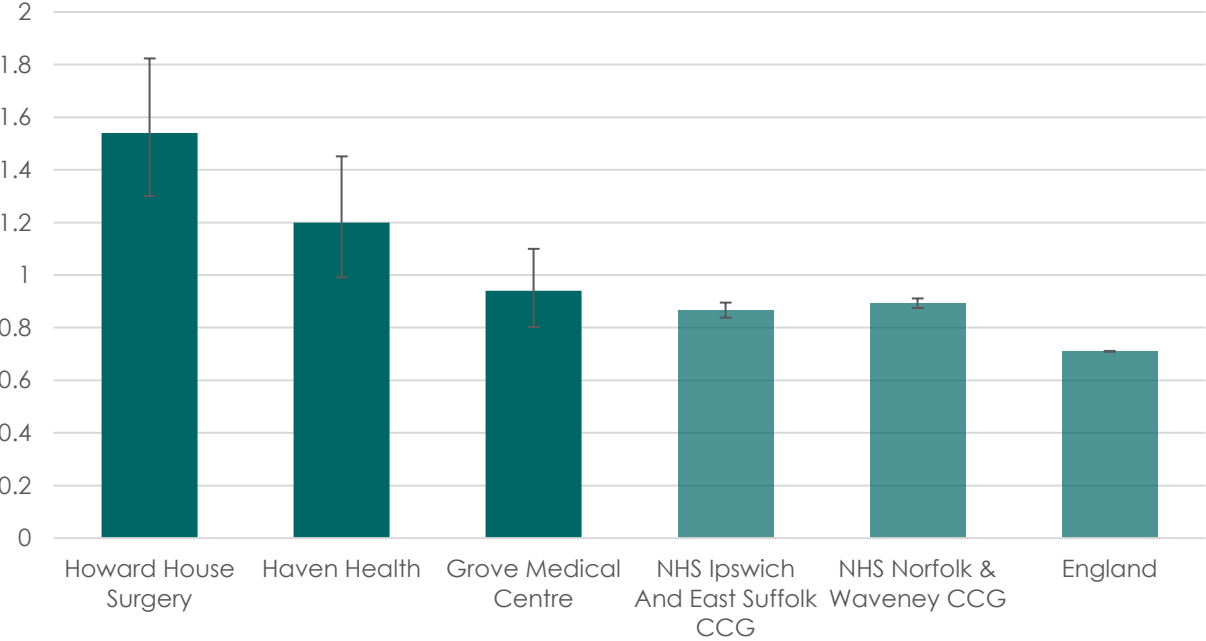


Sources: English indices of deprivation – GOV.UK

# Health and social care

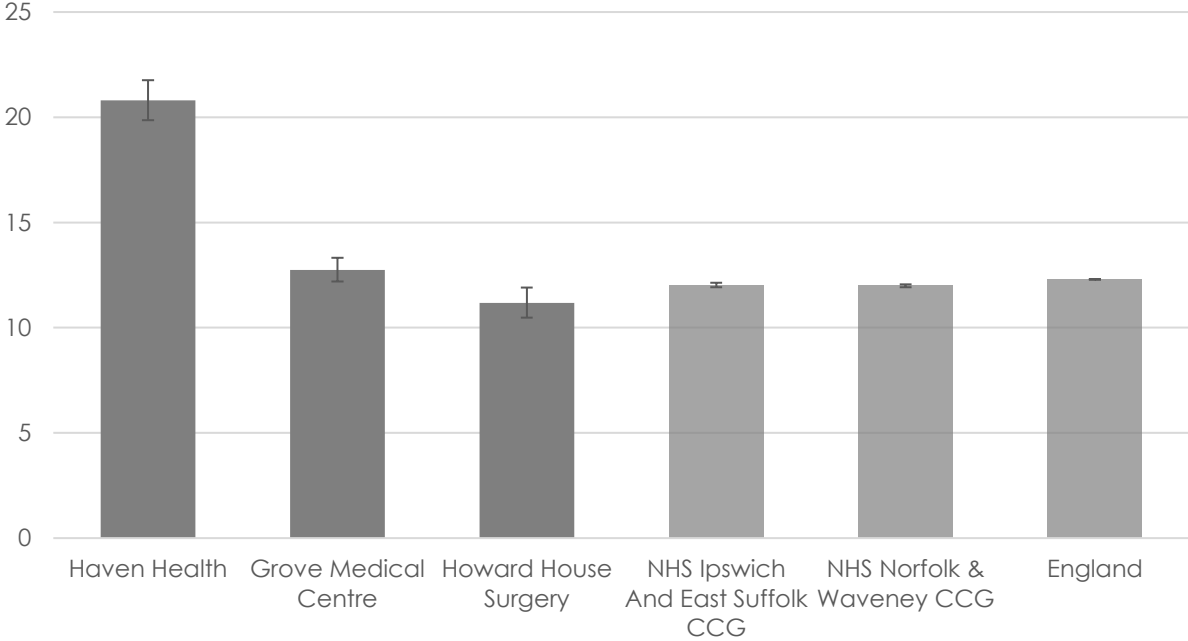
## Mental health

Dementia: QOF prevalance (all ages)



Prevalence of dementia is higher than the national average among patients at Grove Medical Centre, Howard House Surgery and Haven Health

Depression: recorded prevalence (aged 18+)



Prevalence of depression is higher than the national average among patients at Haven Health and Grove Medical Centre

Source: Quality and Outcomes Framework (QOF). Accessed via fingertips.phe.org.uk

Error bars show Upper and Lower confidence limits. These are 95% confidence limits, meaning that there is a 95% probability that the true value lies within the two confidence limits.



# Health and social care

## Mental health

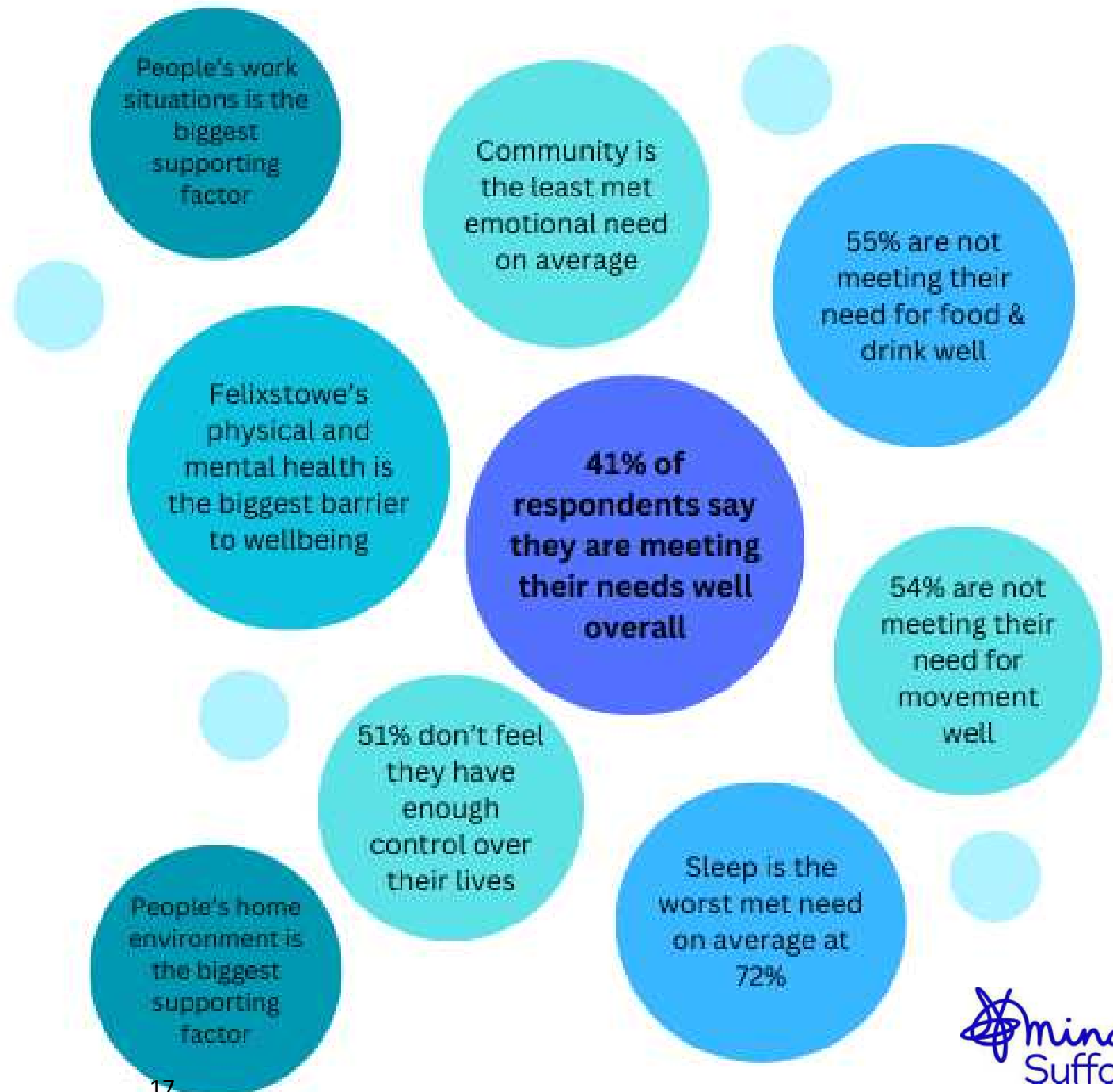
Key findings from Wellbeing in Felixstowe Report

**Sleep helps calm emotions and repairs our body.**

**Community is met when we feel we're part of a group.**

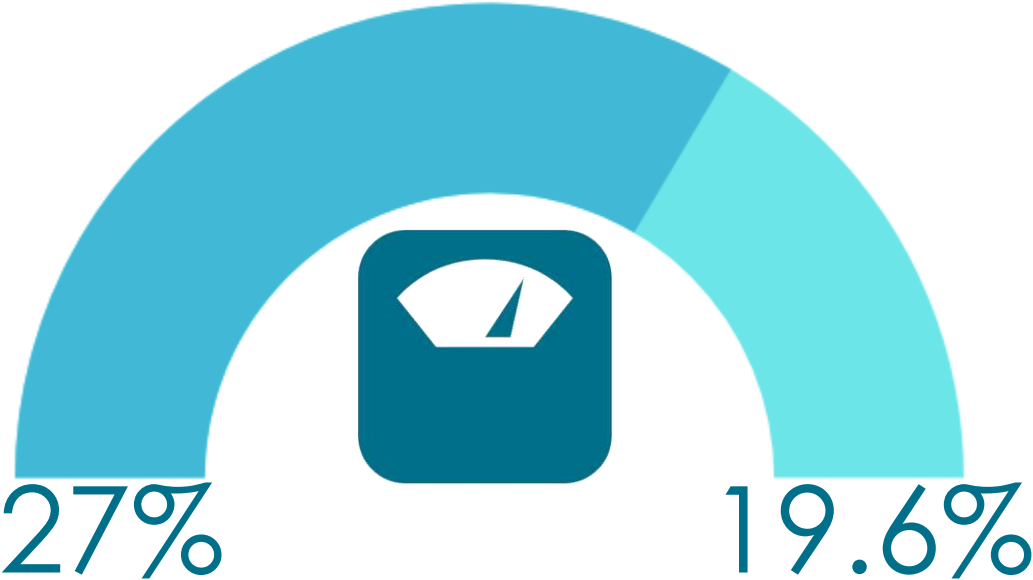
**Control is feeling we are free to make choices for ourselves.**

**Food & Drink is about feeling you get energy, nutrition and pleasure from your diet.**



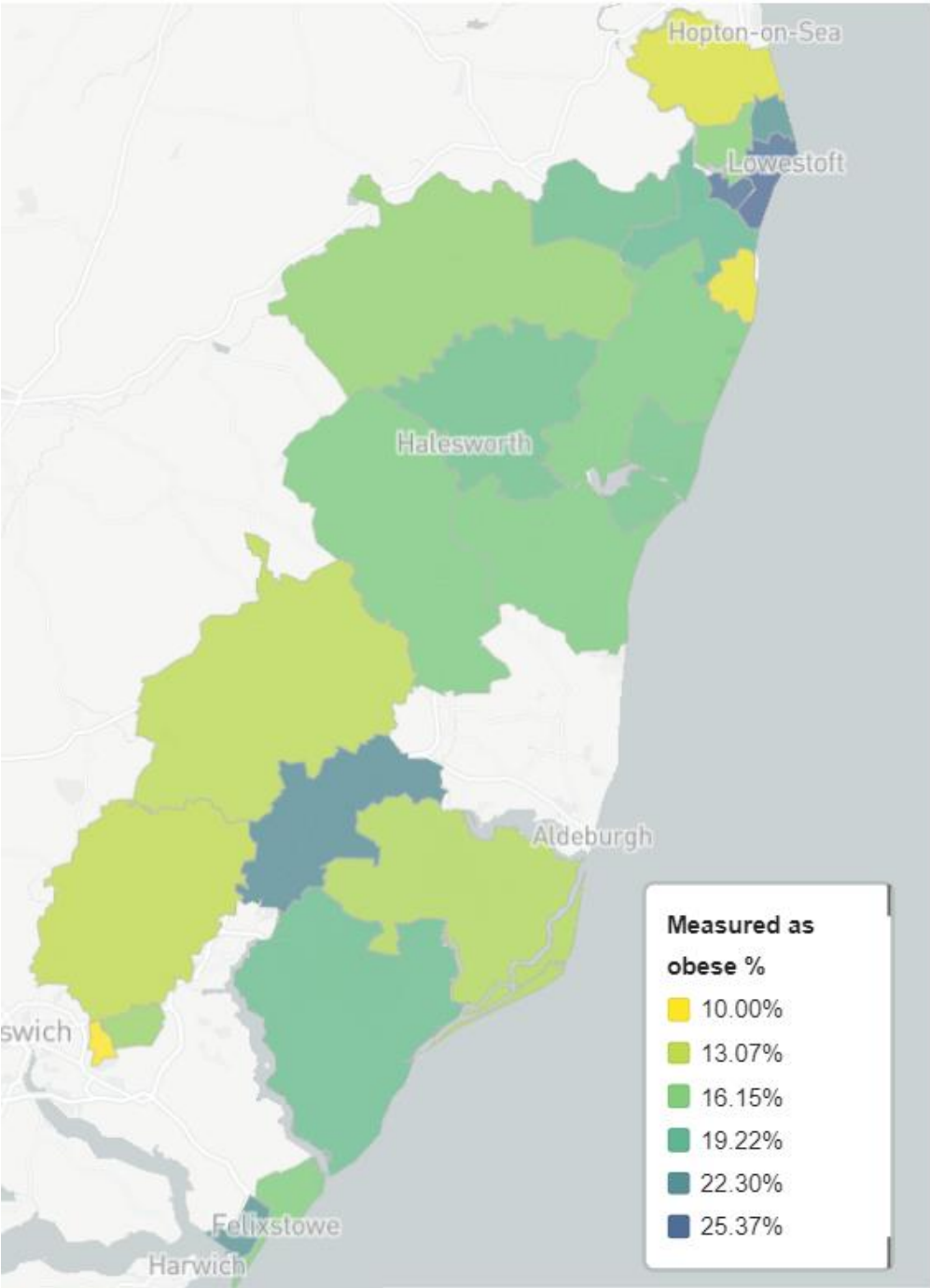
# Health and social care

## Childhood weight



Year 6 children  
overweight or obese  
This has significantly decreased  
from 27% to 19.6%

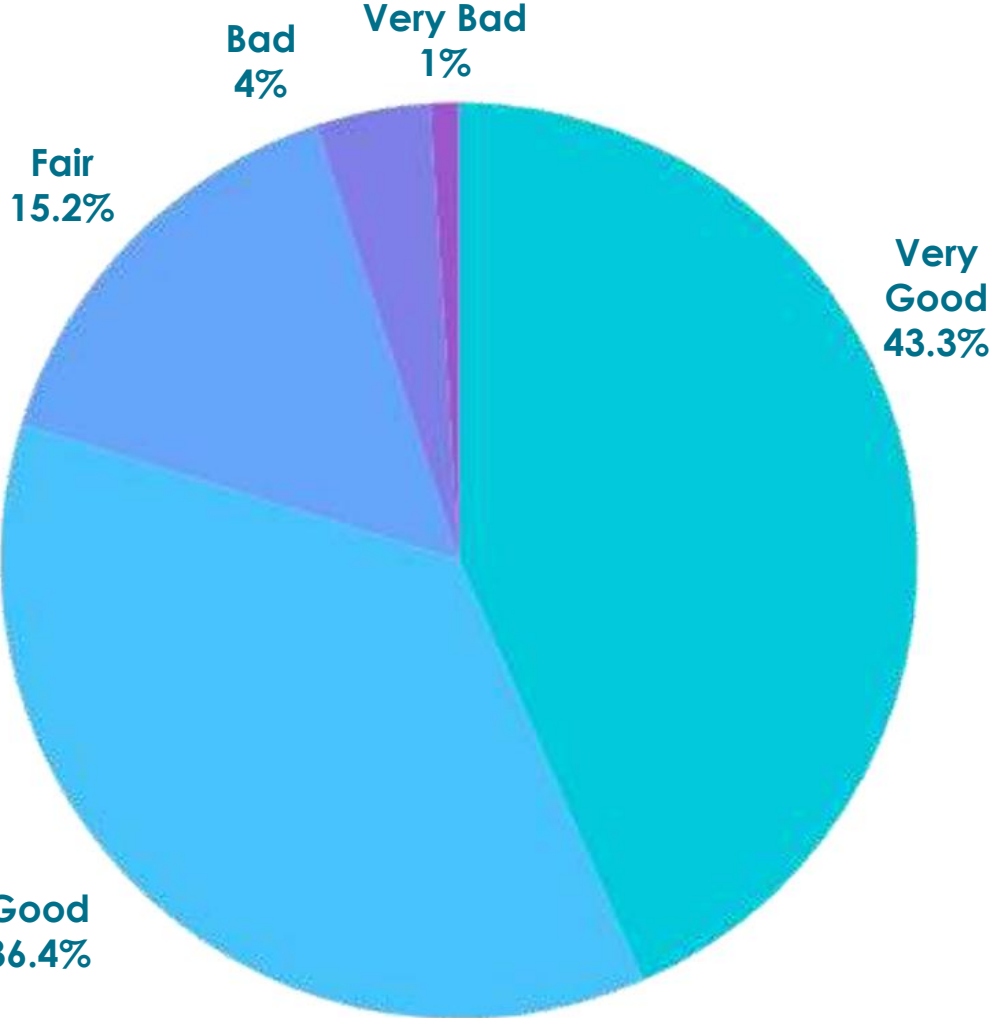
East Suffolk Average 18.7%



Source: Obesity Profile – OHID (phe.org.uk)

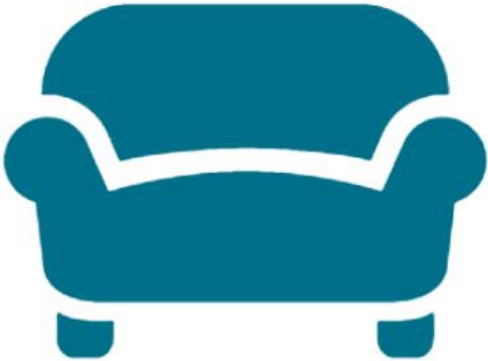
# Health and social care

## Adult Self-reported health



**38.9%**  
of adults complete 2+ hours of exercise per week

Lowest CP: Lowestoft 37.3%  
Highest CP: Kesgrave & Martlesham 43.9%  
UK average: 39.1%



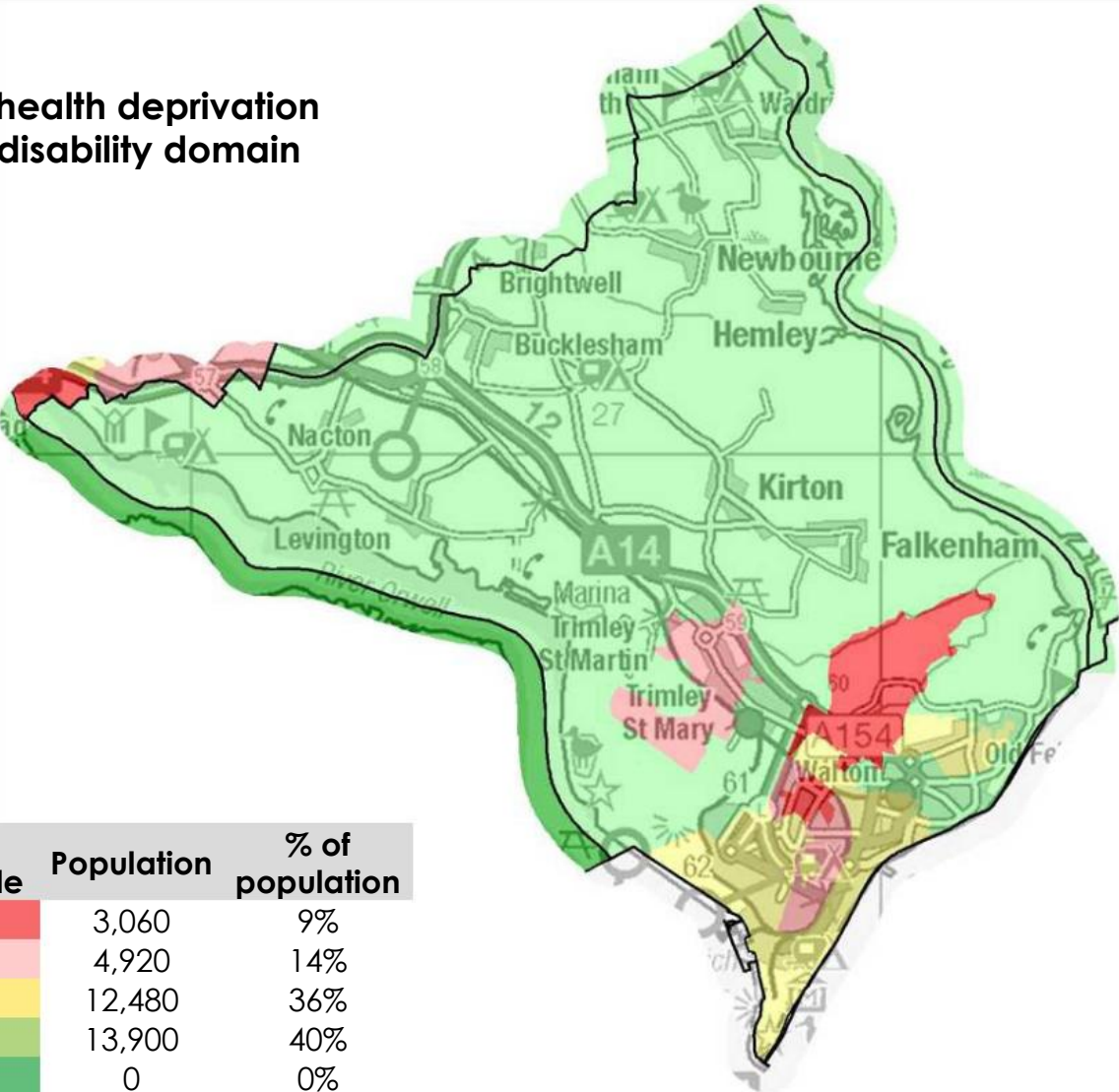
**29.7%**  
of adults do not exercise

Lowest CP: Kesgrave & Martlesham 22.1%  
Highest CP: Lowestoft 32.0%  
UK average: 29.5%

# Health and social care

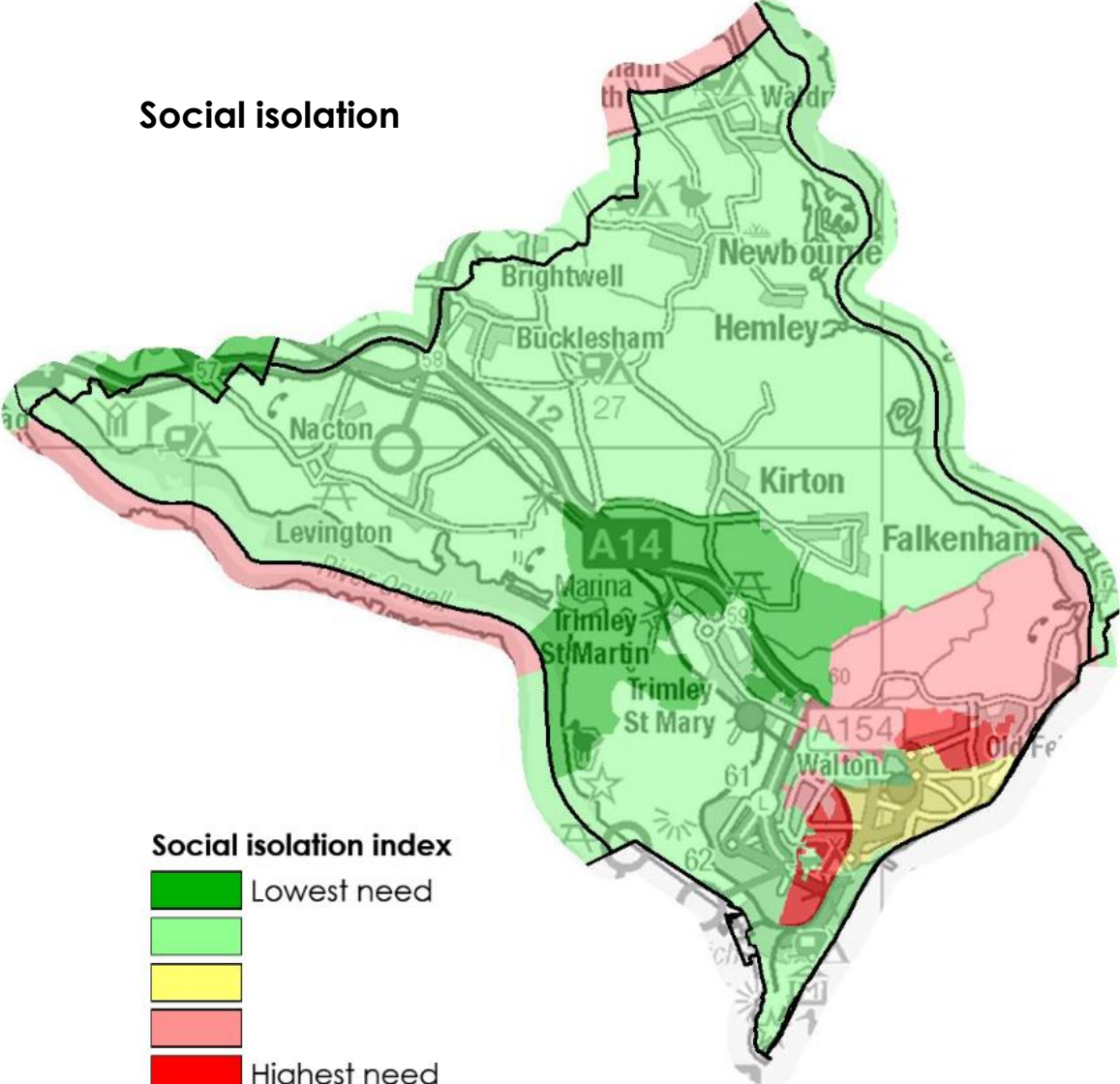
## Disability and social isolation

IMD health deprivation and disability domain



IMD quintile	Population	% of population
1	3,060	9%
2	4,920	14%
3	12,480	36%
4	13,900	40%
5	0	0%

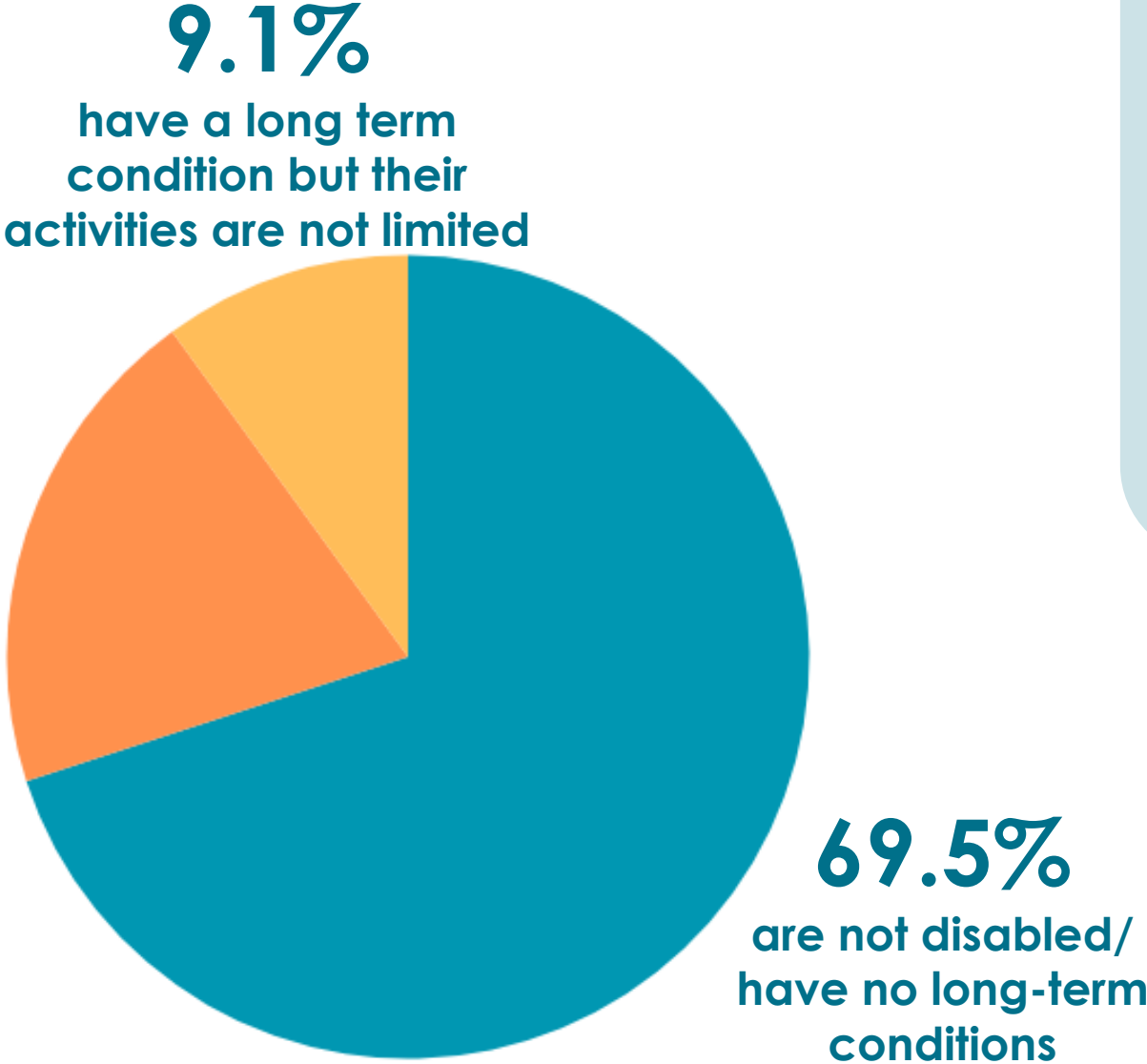
Social isolation



Social isolation index	Need level
Green	Lowest need
Light Green	
Yellow	
Pink	
Red	Highest need

Source: DCLG Index of Multiple Deprivation 2019. Map © Crown copyright and database rights 2019 Ordnance Survey 100023395

# Health and social care Disability and carers



**21.4%**  
are disabled under the equalities act

Of those disabled under the Equalities Act, 8.8% said their day-to-day activities are limited a lot and 12.6% said a little.

**9.4%**  
of residents provide some kind of unpaid care

**3%** of which, provide over 50 hours a week

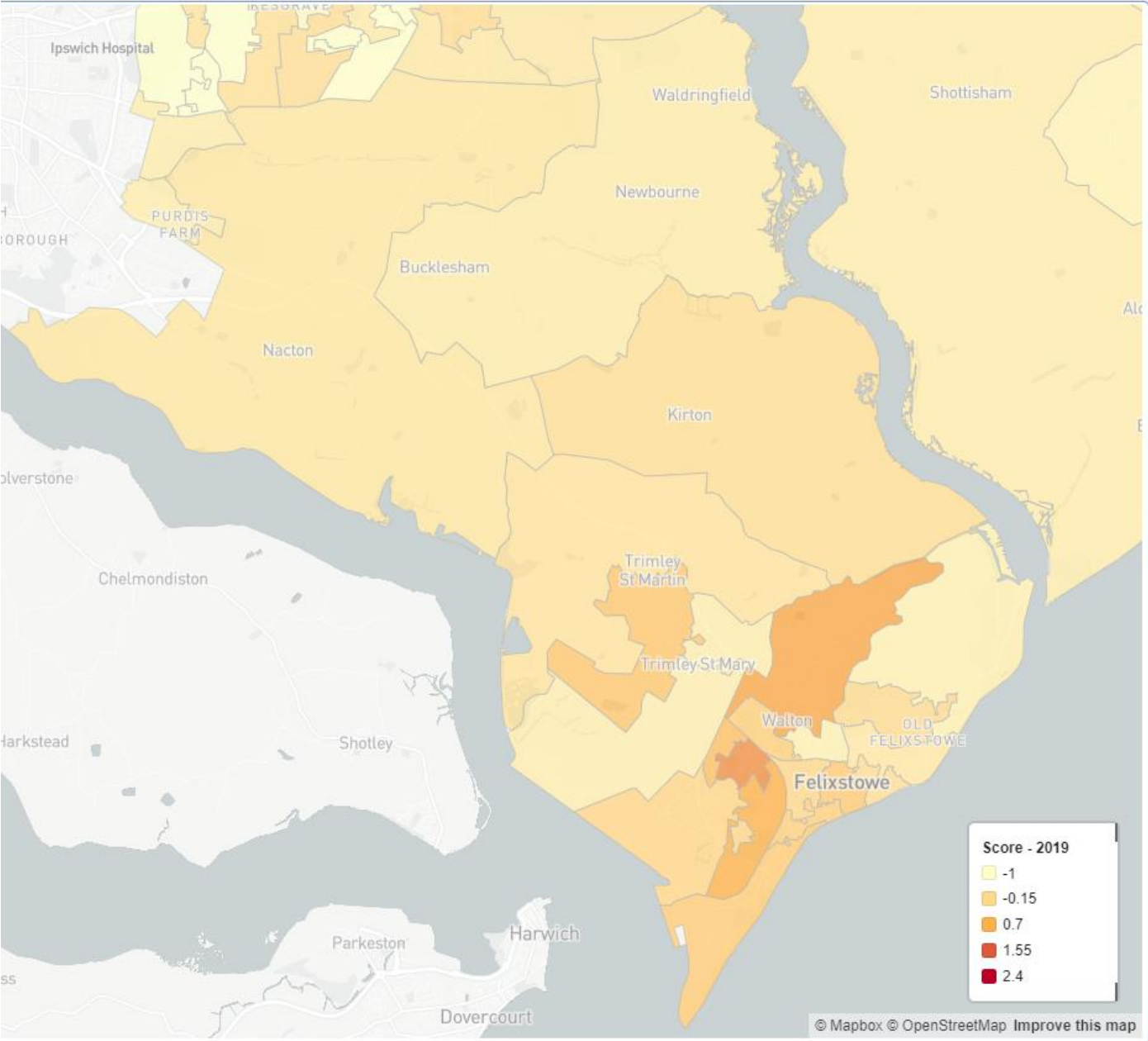


# Health and social care Disability

**This domain measures the risk of premature death and impairment of quality of life through poor physical or mental health.**

**It measures morbidity, disability and premature mortality but not aspects of behaviour or environment that may be predictive of future health deprivation.**

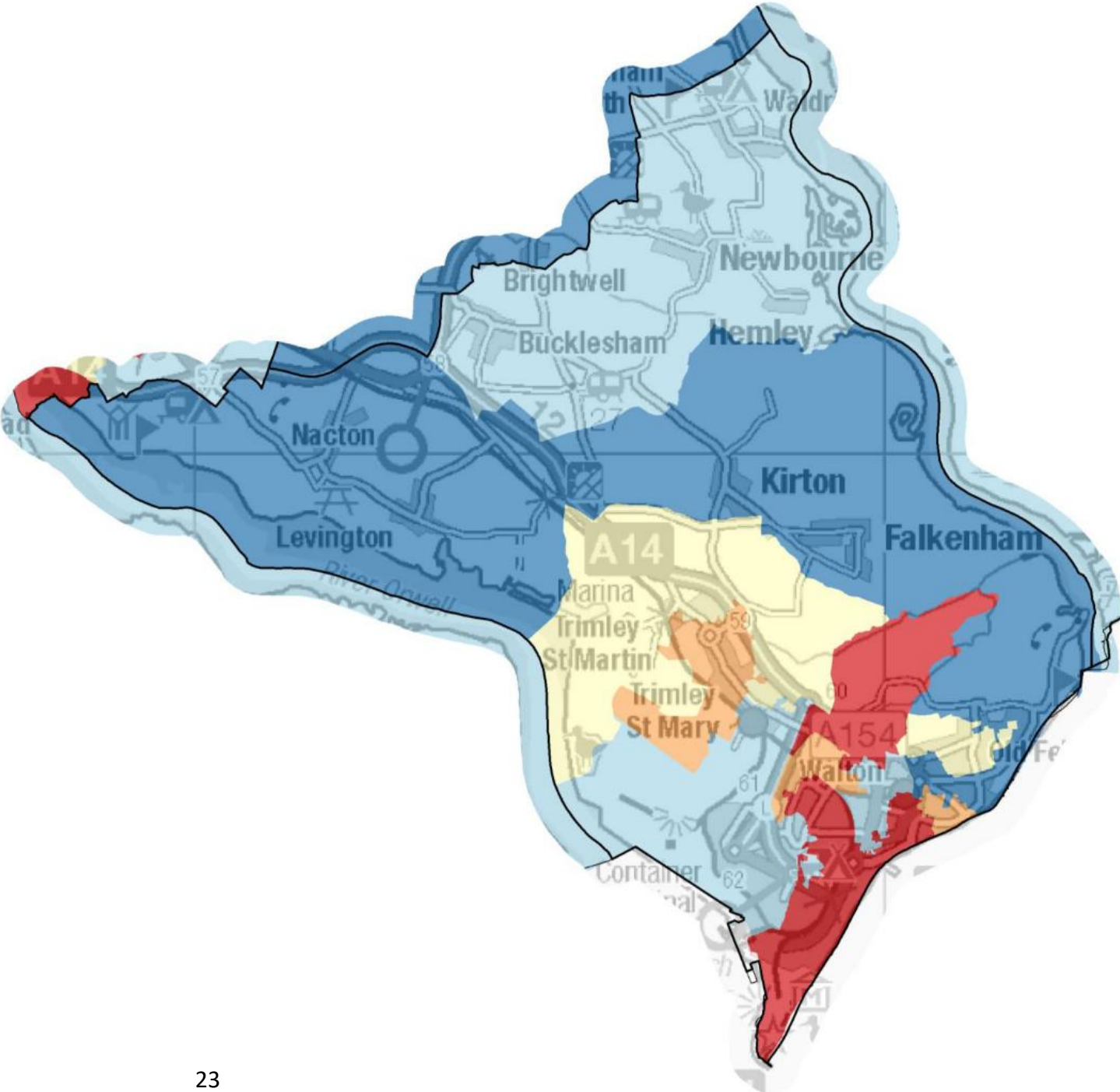
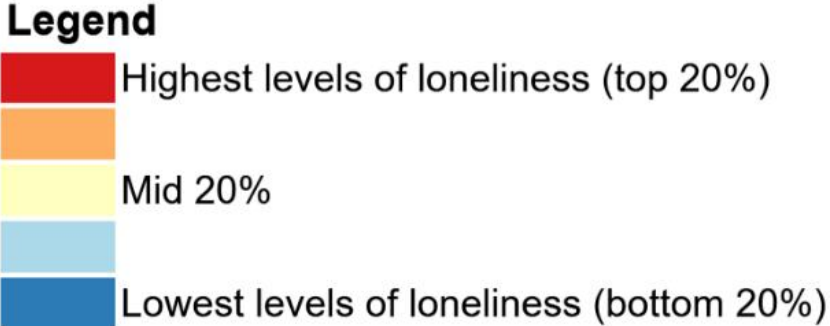
**The higher the IMD score, the more deprived an area is.**



Sources: English indices of deprivation – GOV.UK

# Health and social care Loneliness

Age UK loneliness research



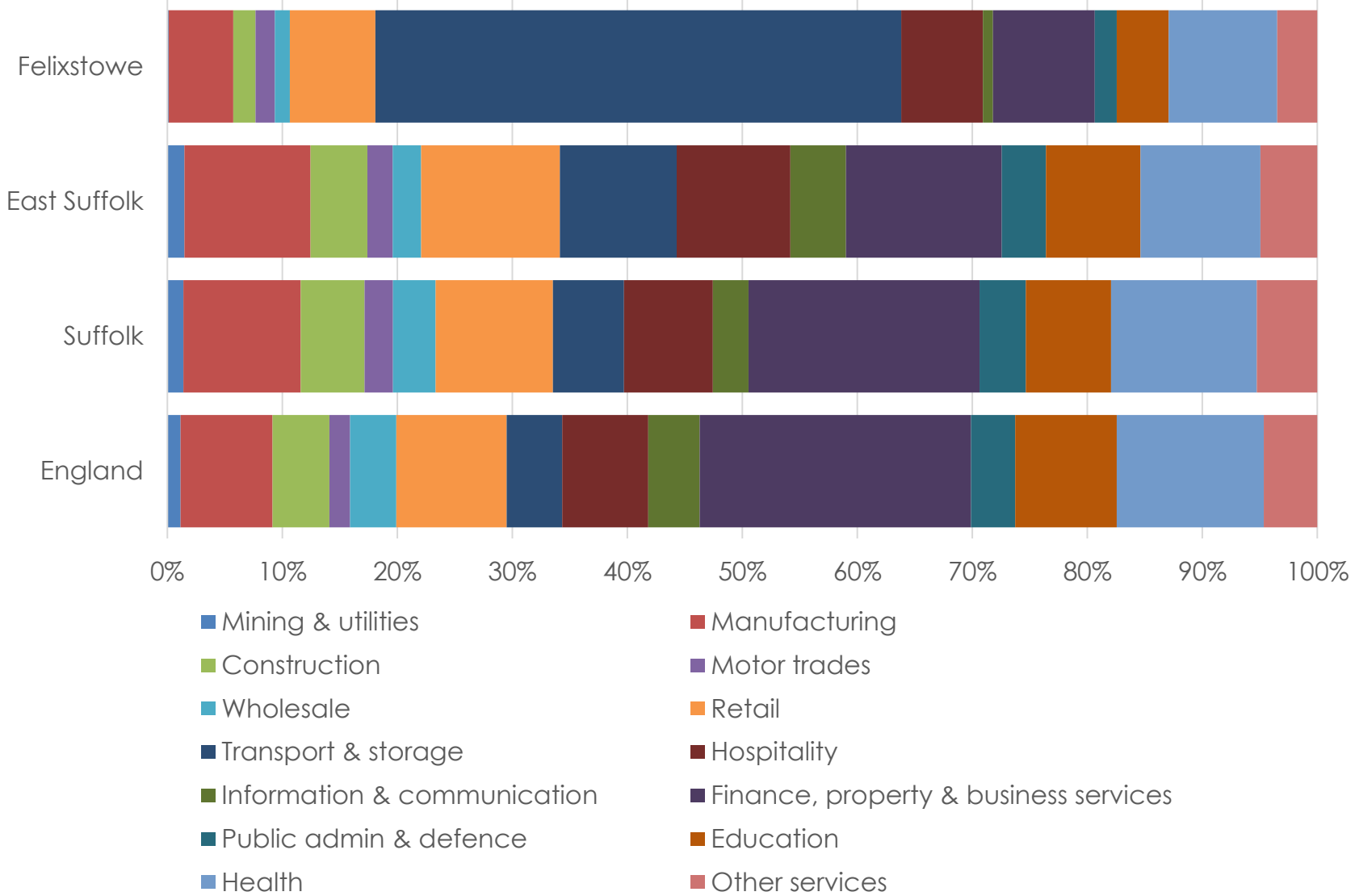
Source: Age UK 2016. Map © Crown copyright and database rights 2022 C

# Employment and education

## Employment



**Transport & storage**  
accounts for almost  
**1 in 2**  
jobs in Felixstowe 1 in 17  
across Suffolk and 1 in 20  
in England



Source: ONS Business Register and Employment Survey 2020

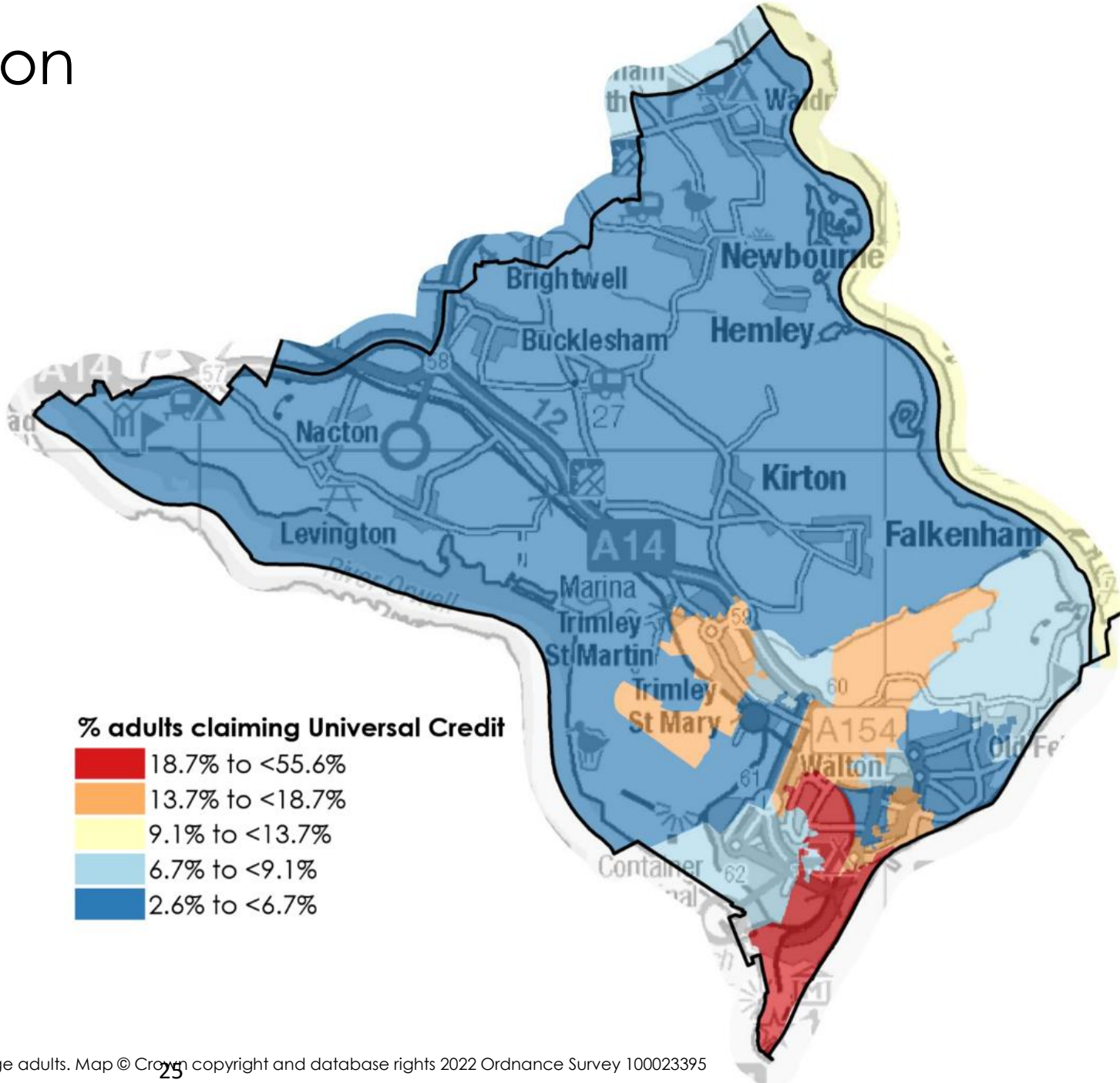


# Employment and education Benefit claimants



**10.7%**

of adults in receipt of  
Universal Credit



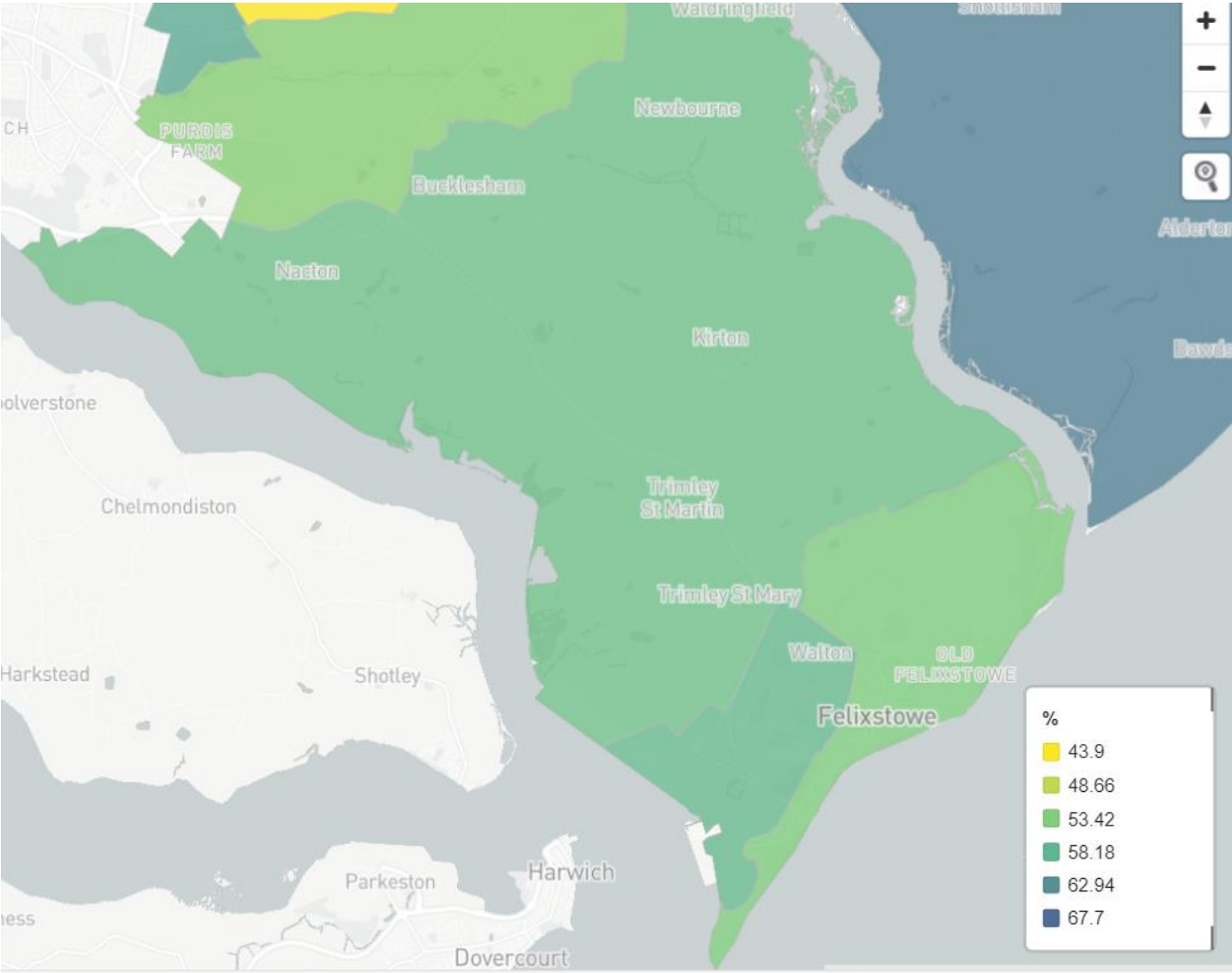
# Employment and education

## Universal Credit claimants not in employment



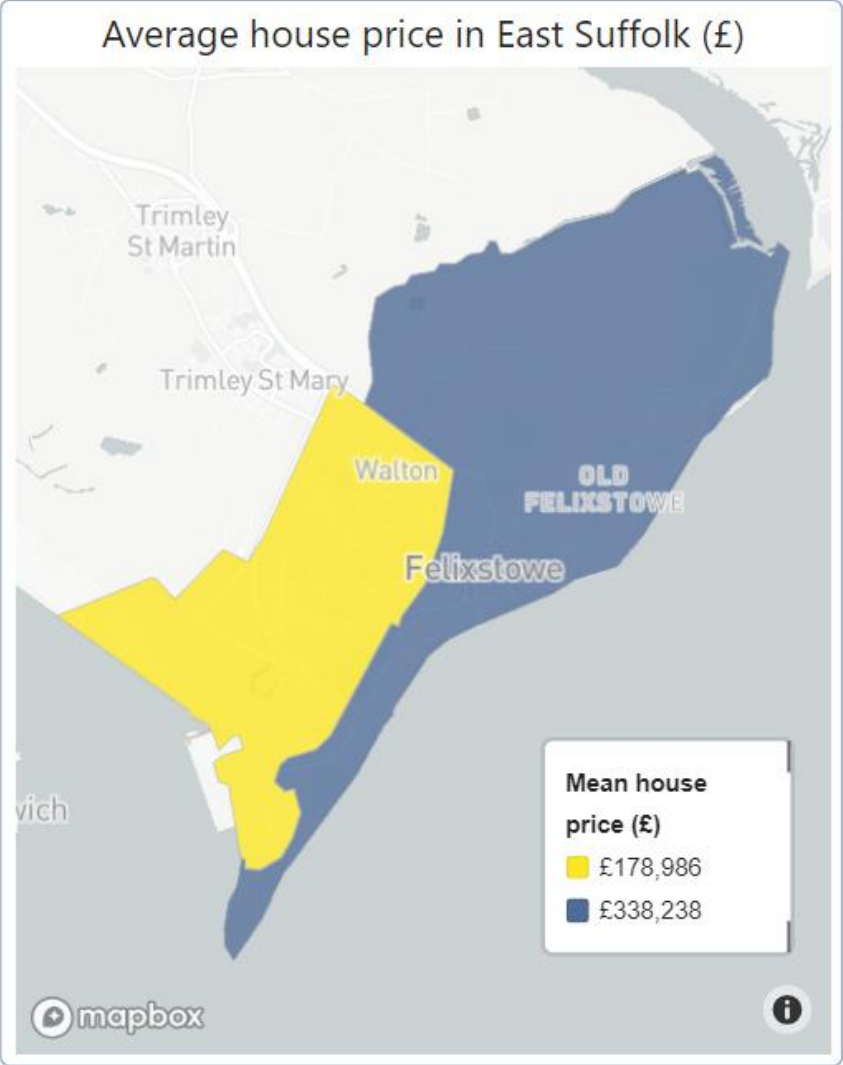
**56%**

of adults in receipt of Universal Credit are not in employment



Source: Stat-Xplore – Log in (dwp.gov.uk)

# Housing Prices and tenure



Owned outright	43.8%
Owned with a mortgage or loan	24.5%
Shared ownership	0.3%
Rented from council or equivalent	2.3%
Rented from social landlord	11.6%
Rented from private landlord or letting agency	15.6%
Rented from other private owners	1.9%
Occupiers living rent free	0%

Source: ons.gov.uk Data taken from Dec 21 - 22

# Housing

## Central Heating and Fuel Poverty



**2,830**

houses in poor condition;  
18.3% of all houses, the  
lowest proportion of any CP

Highest CP: Framlingham &  
Wickham Market 44.0%



**520**

hard to heat homes;  
3.3% of all houses

Lowest CP: Kesgrave & Martlesham 1.4%  
Highest CP: Lowestoft 3.7%

**13.3%**

of households in fuel poverty

Suffolk average 14.5%

**75%**

have mains gas  
central heating, with  
oil then electric  
following.

**236** households have  
responded as having no  
form of central heating.

This equates to **1.5%**



# Environment

## Air quality and attitudes towards climate change



**48.5%** pay more for green products (UK 50.7%)



**2.6%** do not buy something due to too much packaging (UK 2.7%)



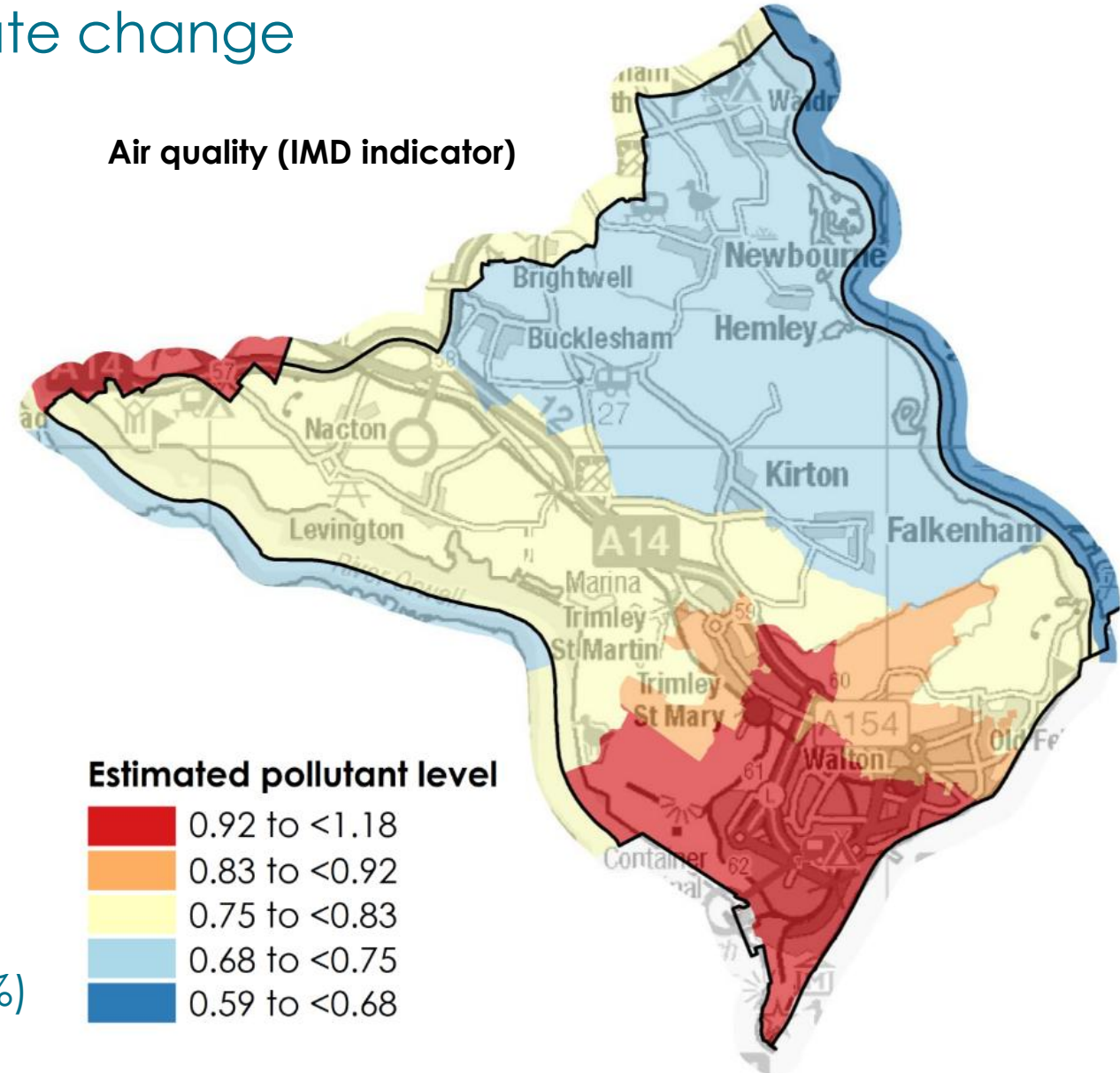
**52.8%** recycle items rather than throwing away (UK 50.9%)



**30.9%** make effort to cut down on water usage (UK 29.3%)



**45.6%** have a reasonable knowledge of climate change (UK 46.2%)



# Environment

## Cars and travel to work



**54.7%** method of travel to work is a car or van



**8.4%** method of travel to work is on foot



**3.3%** method of travel to work is a bicycle



**1%** method of travel to work is on a bus

Those that travel to work mainly report travelling less than 5km

## Population mainly working from home (2021)



Felixstowe Peninsula  
27.5%



Suffolk  
26.5%



England  
31.5%



**83.4%**

of homes are within 1/4 of a mile of a frequent\* bus service, the 2<sup>nd</sup> highest of any CP



**1.0%**

of homes are more than 2 miles from a frequent\* bus service, the 3<sup>rd</sup> lowest of any CP

# Population by Parish

<b>Parish name</b>	<b>Population</b>
Felixstowe	24,560
Trimley St. Mary	3,830
Trimley St. Martin	2,130
Kirton	1,190
Nacton	870
Bucklesham	550
Waldringfield	460
Newbourne + Hemley	320
Levington + Stratton Hall	240
Falkenham	180