



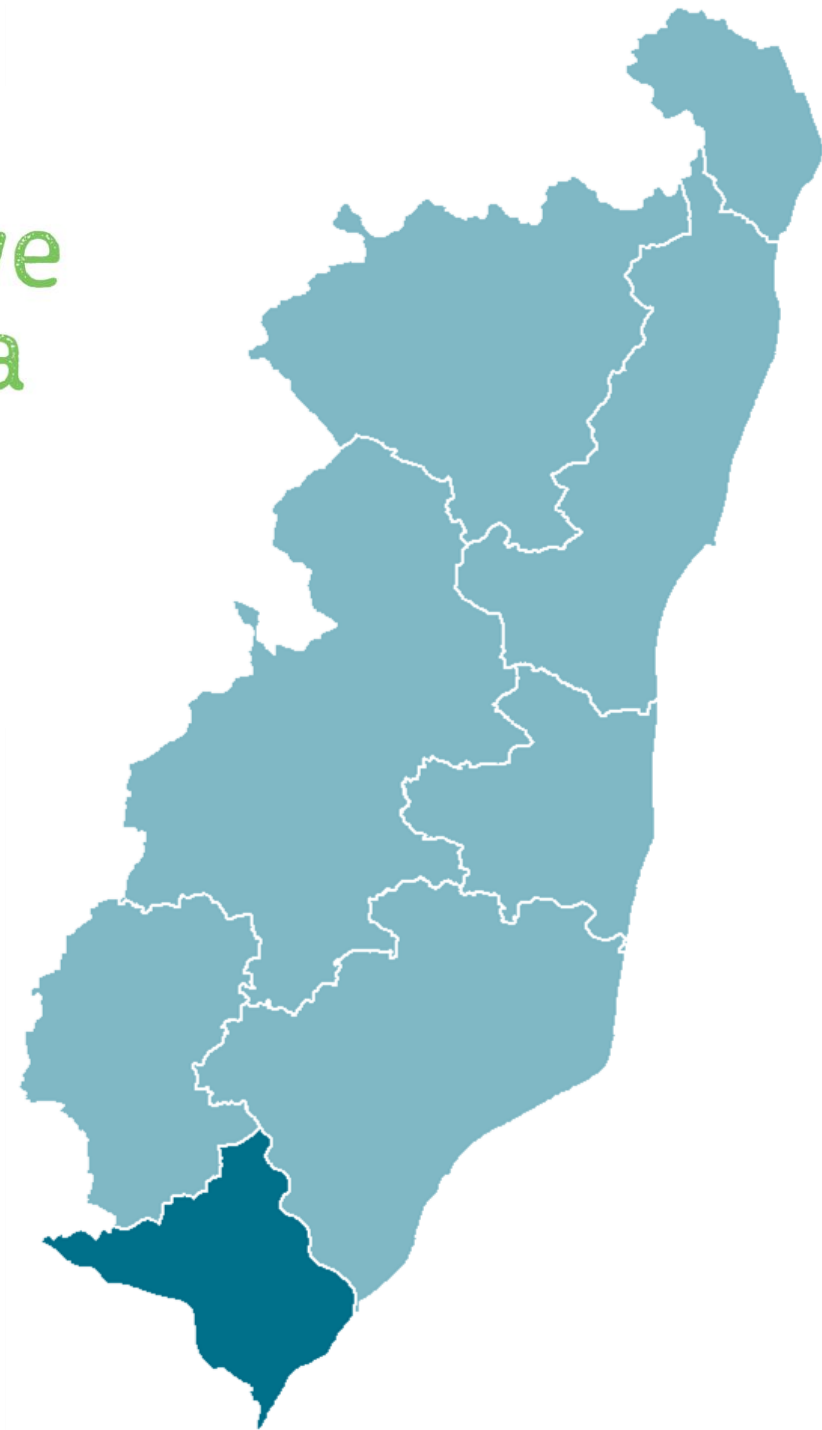
East Suffolk
Community
Partnerships

Bringing ideas to life

Felixstowe
Peninsula

Data profile

2023/24



Population

Key facts



Total population

34,349



Largest age group

70-74



Smallest age group

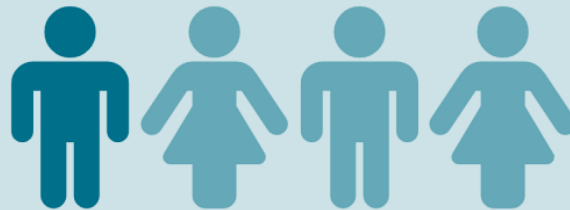
80-84



14.44%

are aged under
19

15.5%; East Suffolk average



More than

1 in 4

people are aged 65+

29.2%; East Suffolk average 27.7%



1,483

people aged 85 or
over

4.3% of total population; national
average 2.5%

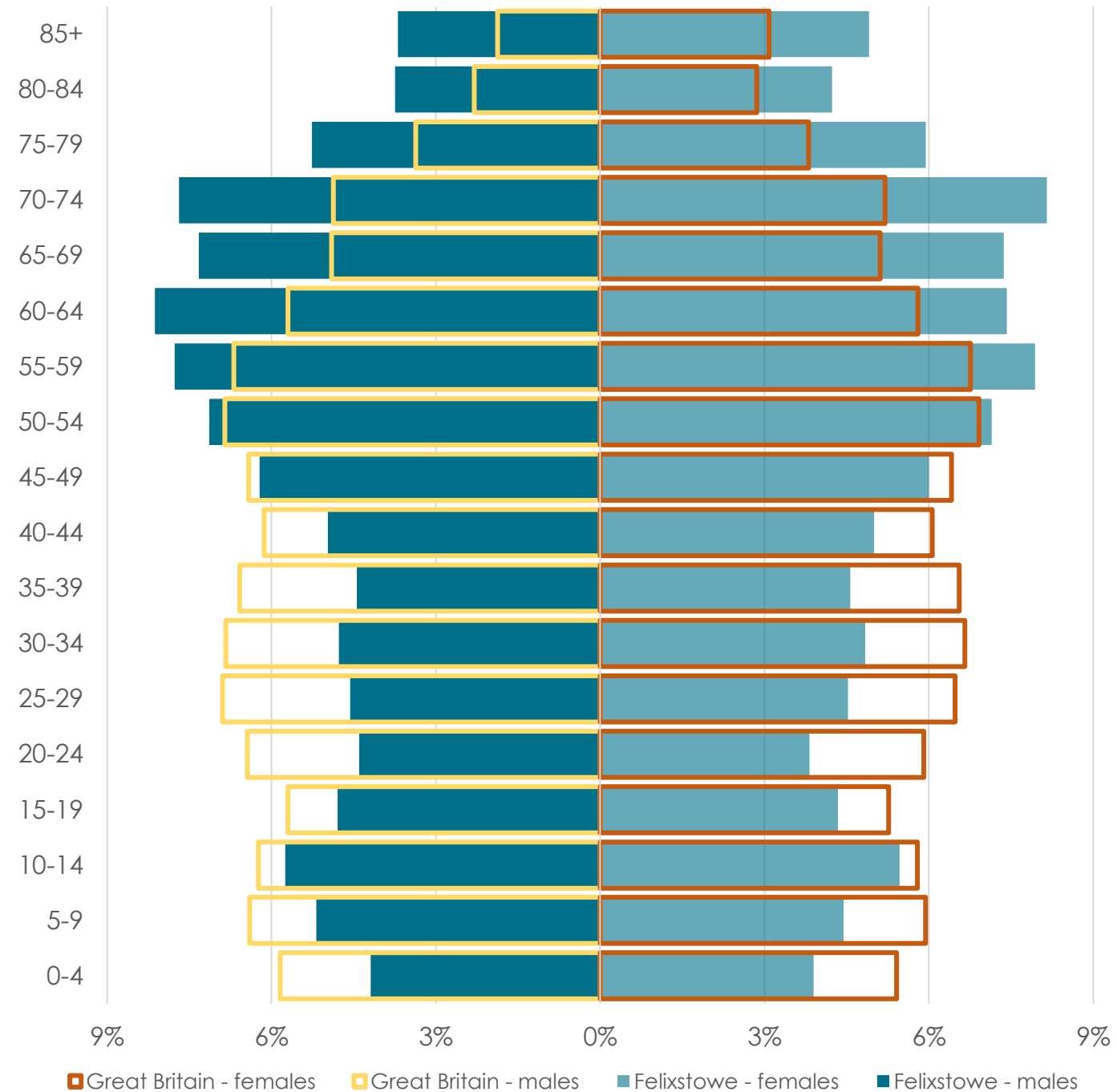
Population Age breakdown

The age pyramid shows the age breakdown of the population of Felixstowe Pensinsula against the national average

Most over-represented age group: **85+**

Most under-represented age group: **20-24**

All groups below the age of 50 account for a smaller proportion of the Felixstowe Peninsula population than they do across Great Britain as a whole



Deprivation

Key facts



3,434

people affected by
income deprivation

9.8%

Suffolk average 10.2%



9.4%

of working age people
affected by
employment
deprivation

Suffolk average 8.3%
1,730 people



730

children affected by
income deprivation

13.4%

Suffolk average 13.6%



941

older people affected
by income deprivation

9.2%

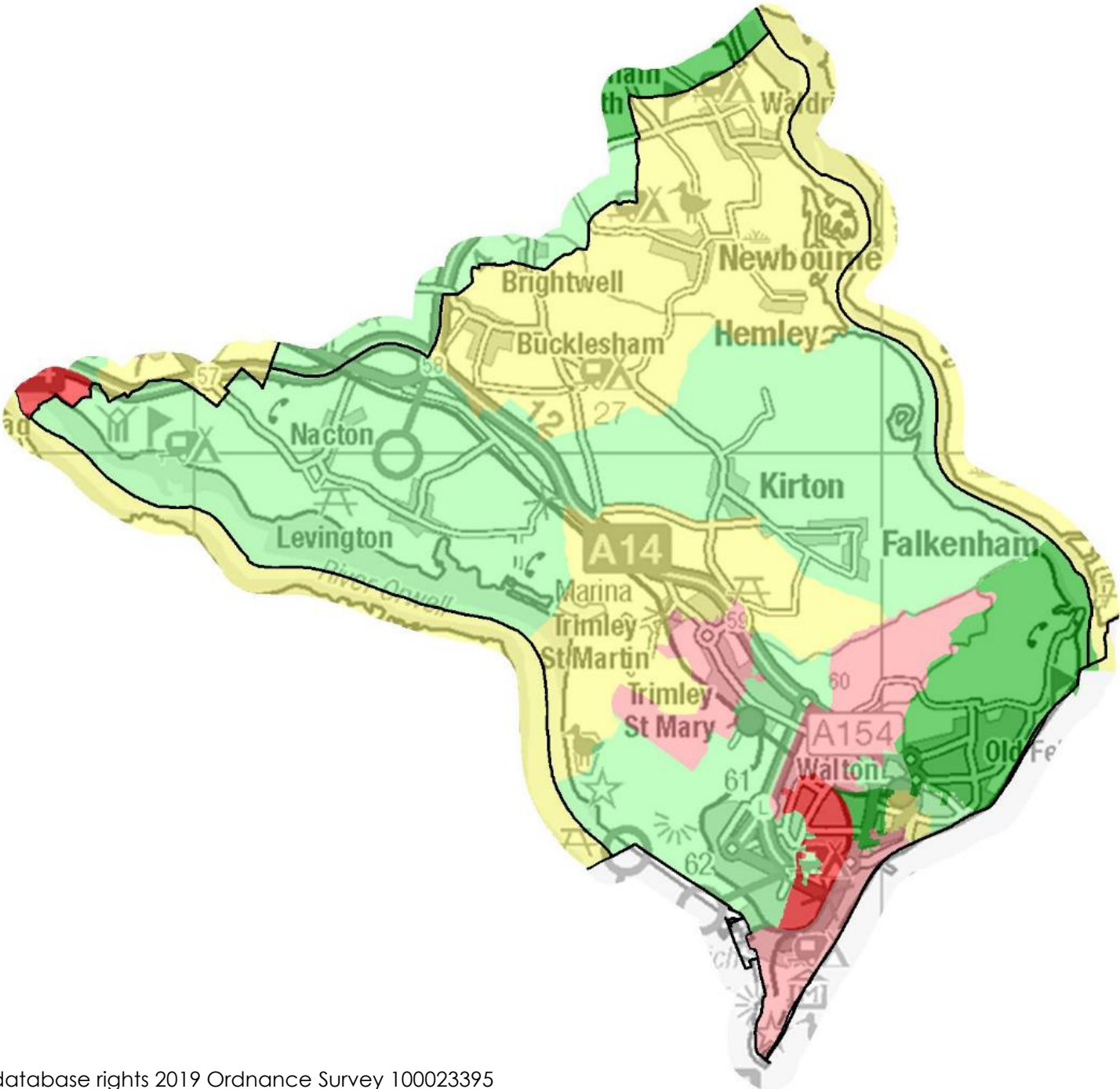
Suffolk average 10.2%

Source: DCLG Index of Multiple Deprivation 2019 and ONS 2020 mid-year population estimates
English indices of deprivation – GOV.UK

Deprivation Overall

IMD quintile	Population	% of population
1	3,300	10%
2	9,620	28%
3	4,580	13%
4	10,010	29%
5	6,830	20%

1 = most deprived 20% of areas in England
5 = least deprived 20% of areas in England

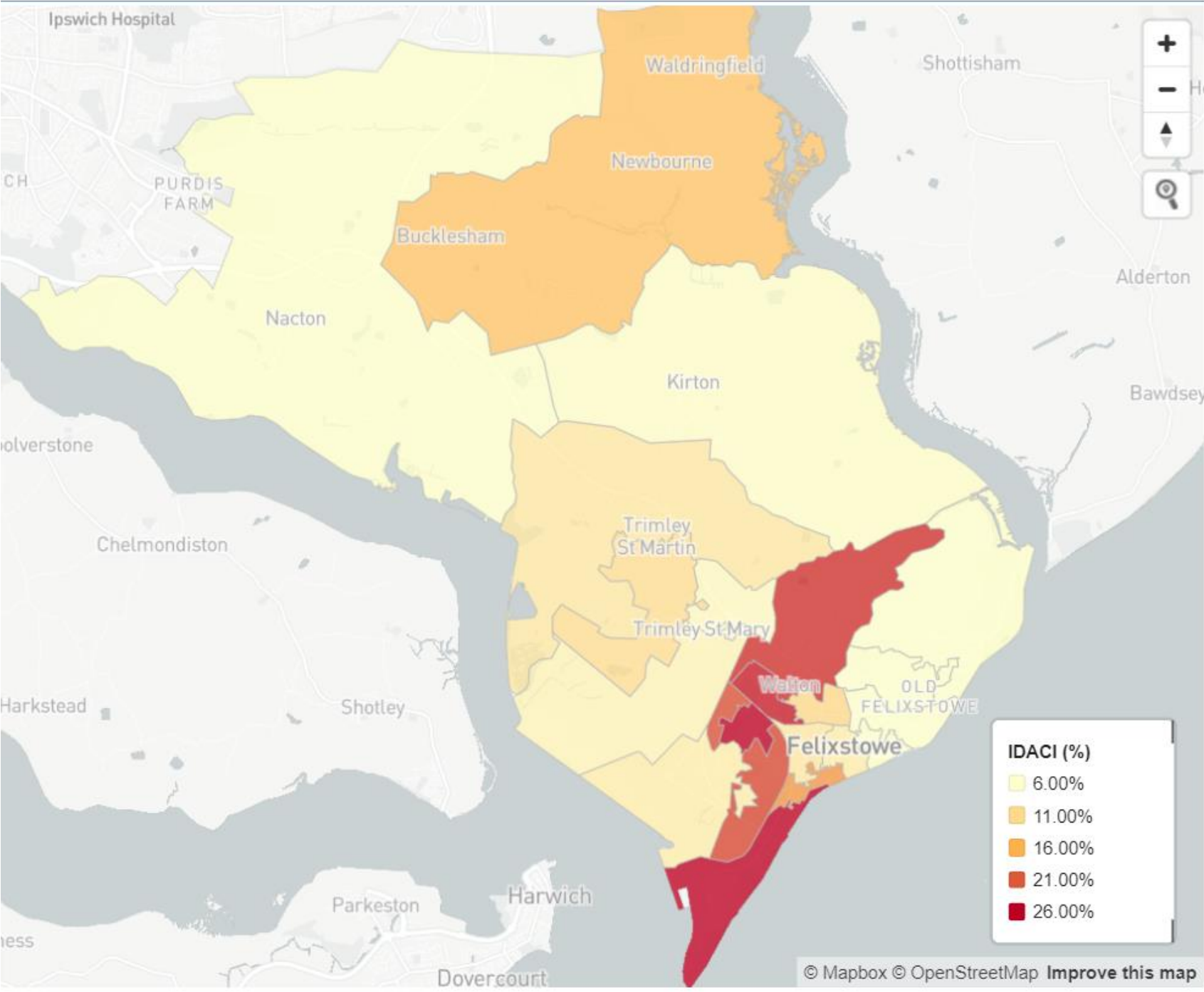
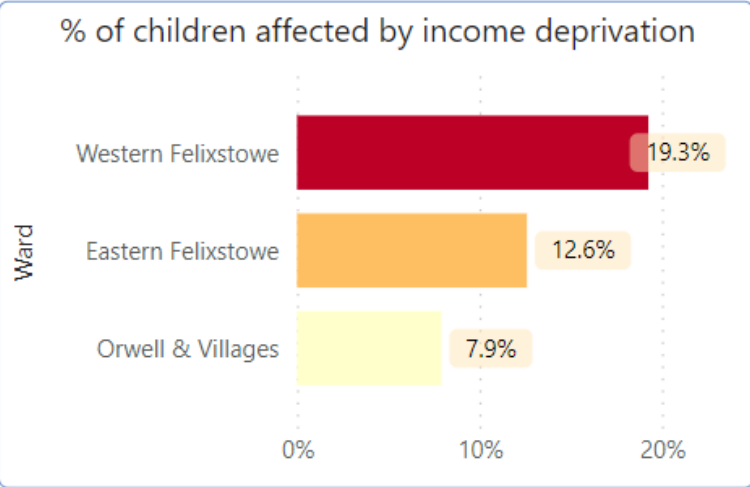


Source: DCLG Index of Multiple Deprivation 2019. Map © Crown copyright and database rights 2019 Ordnance Survey 100023395

Deprivation Children

13.4%
Children affected by
income deprivation

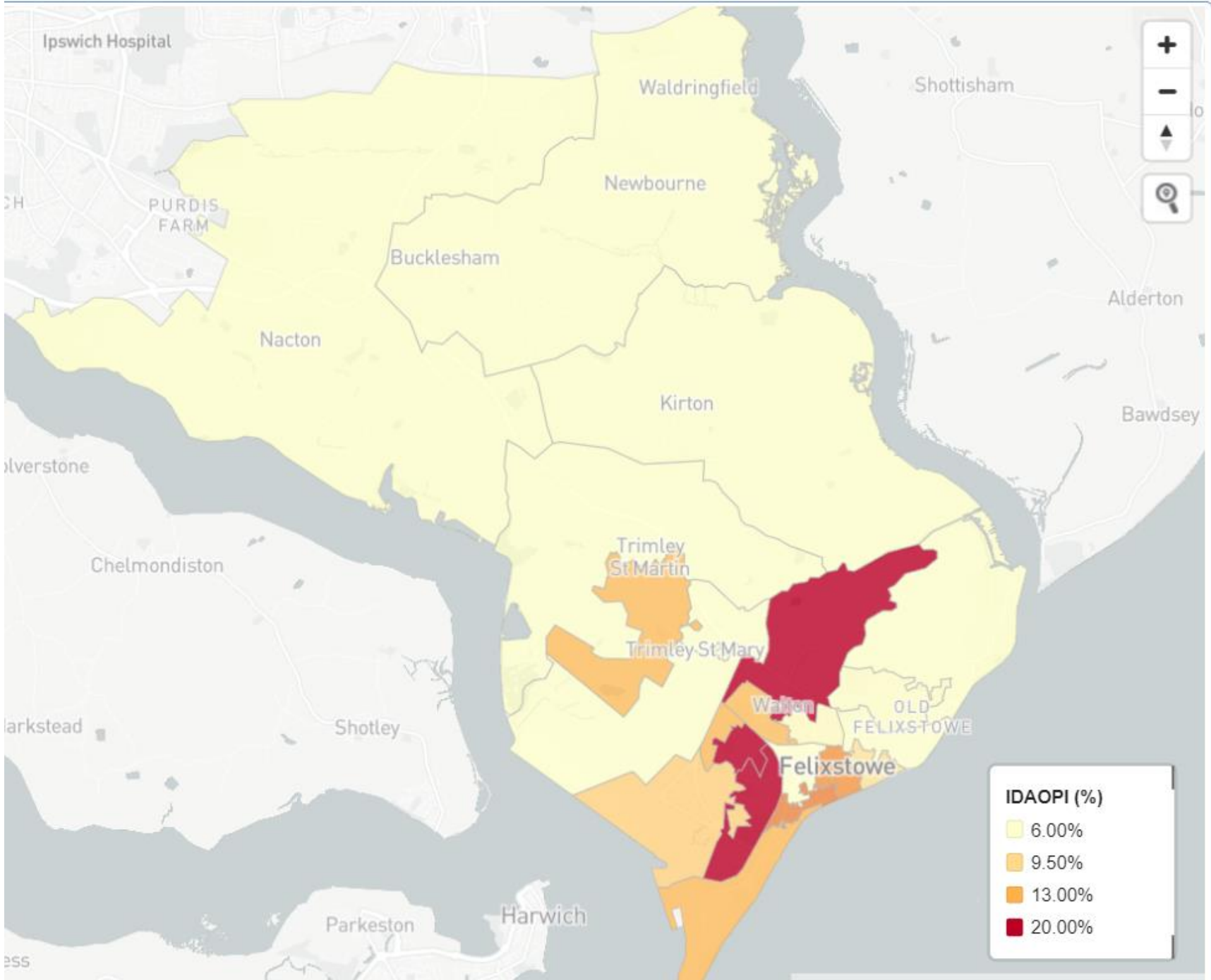
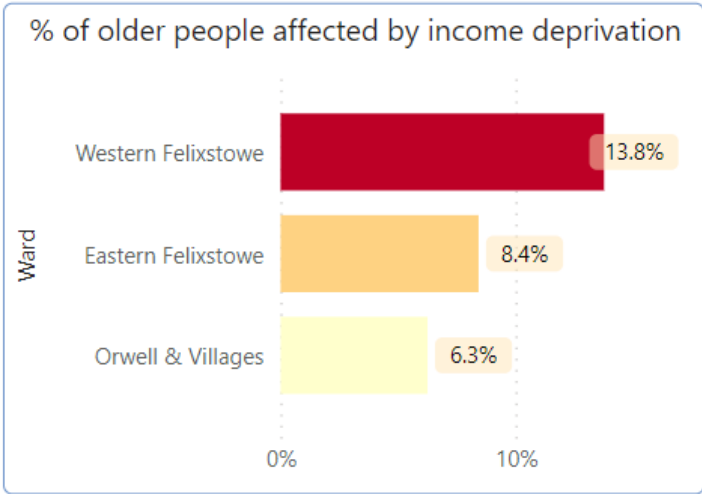
Suffolk average 13.6%



Sources: English indices of deprivation – GOV.UK

Deprivation Older people

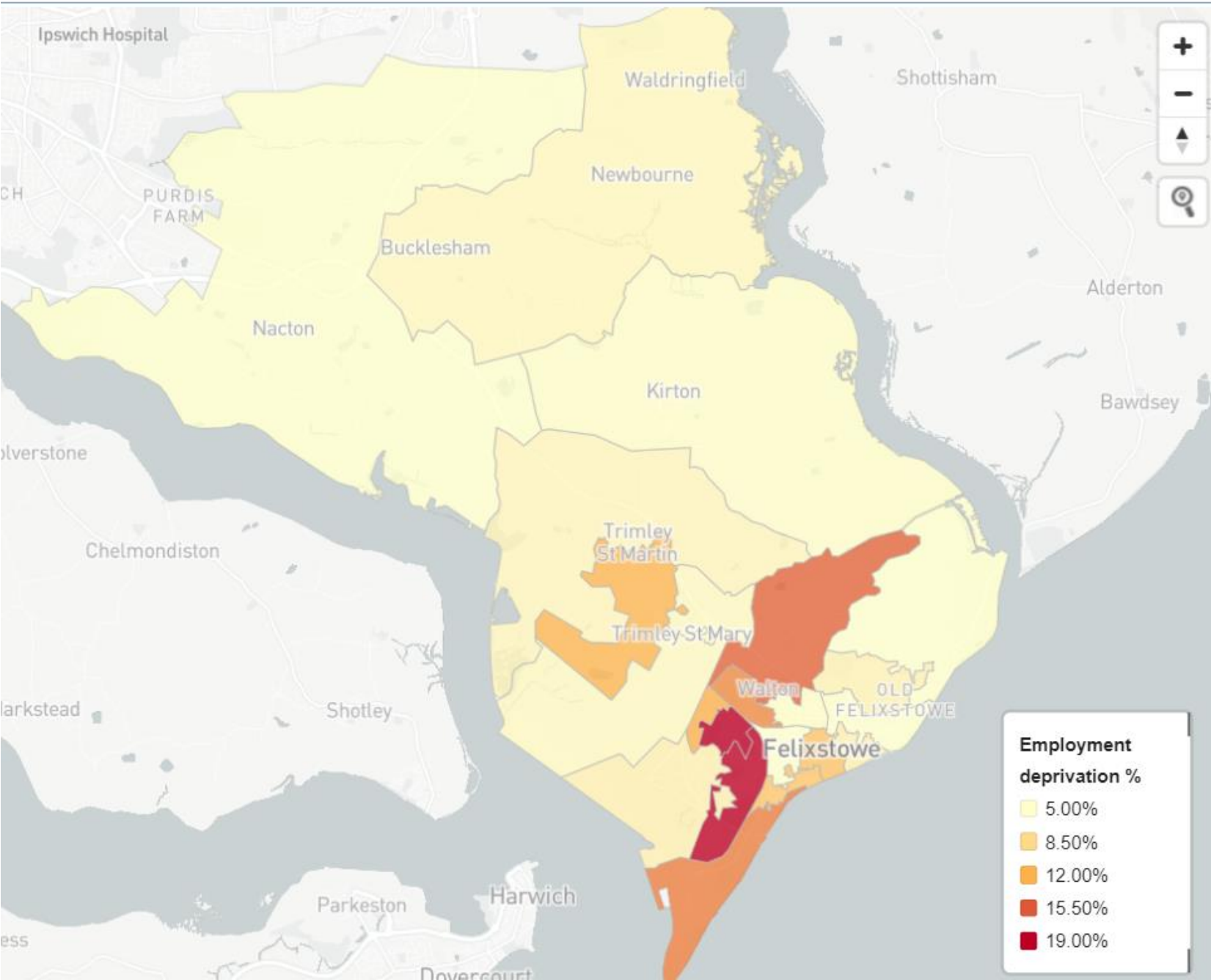
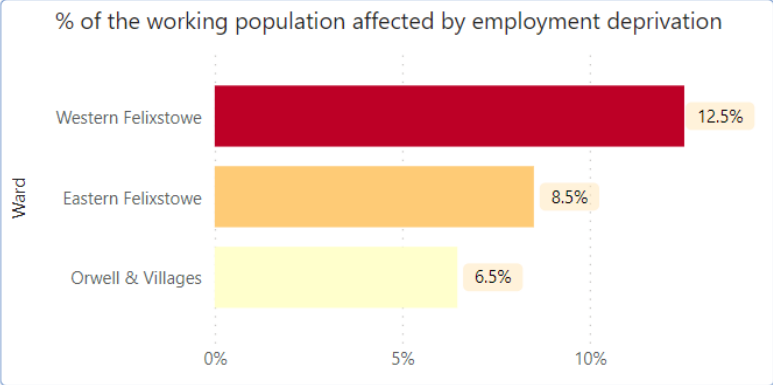
9.2%
older people affected by
income deprivation
Suffolk average 10.2%



Sources: English indices of deprivation – GOV.UK

Deprivation Employment

9.4%
working people affected by
income deprivation
Suffolk average 8.3%

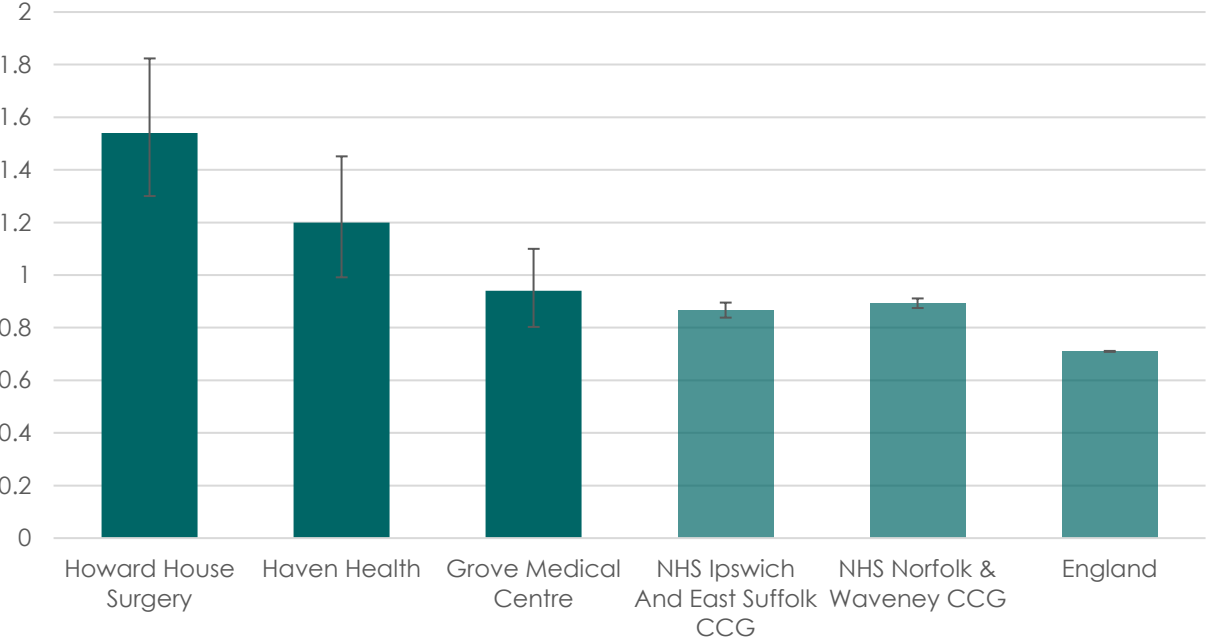


Sources: English indices of deprivation – GOV.UK

Health and social care

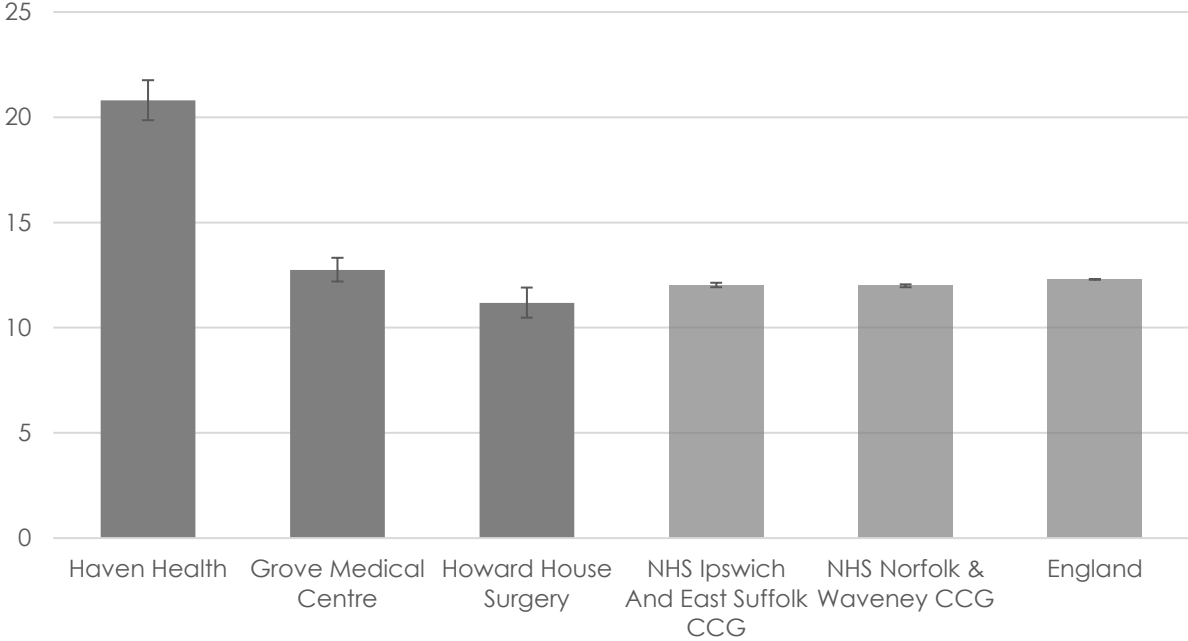
Mental health

Dementia: QOF prevalance (all ages)



Prevalence of dementia is higher than the national average among patients at Grove Medical Centre, Howard House Surgery and Haven Health

Depression: recorded prevalence (aged 18+)



Prevalence of depression is higher than the national average among patients at Haven Health and Grove Medical Centre

Source: Quality and Outcomes Framework (QOF). Accessed via fingertips.phe.org.uk

Error bars show Upper and Lower confidence limits. These are 95% confidence limits, meaning that there is a 95% probability that the true value lies within the two confidence limits.

Health and social care

Mental health

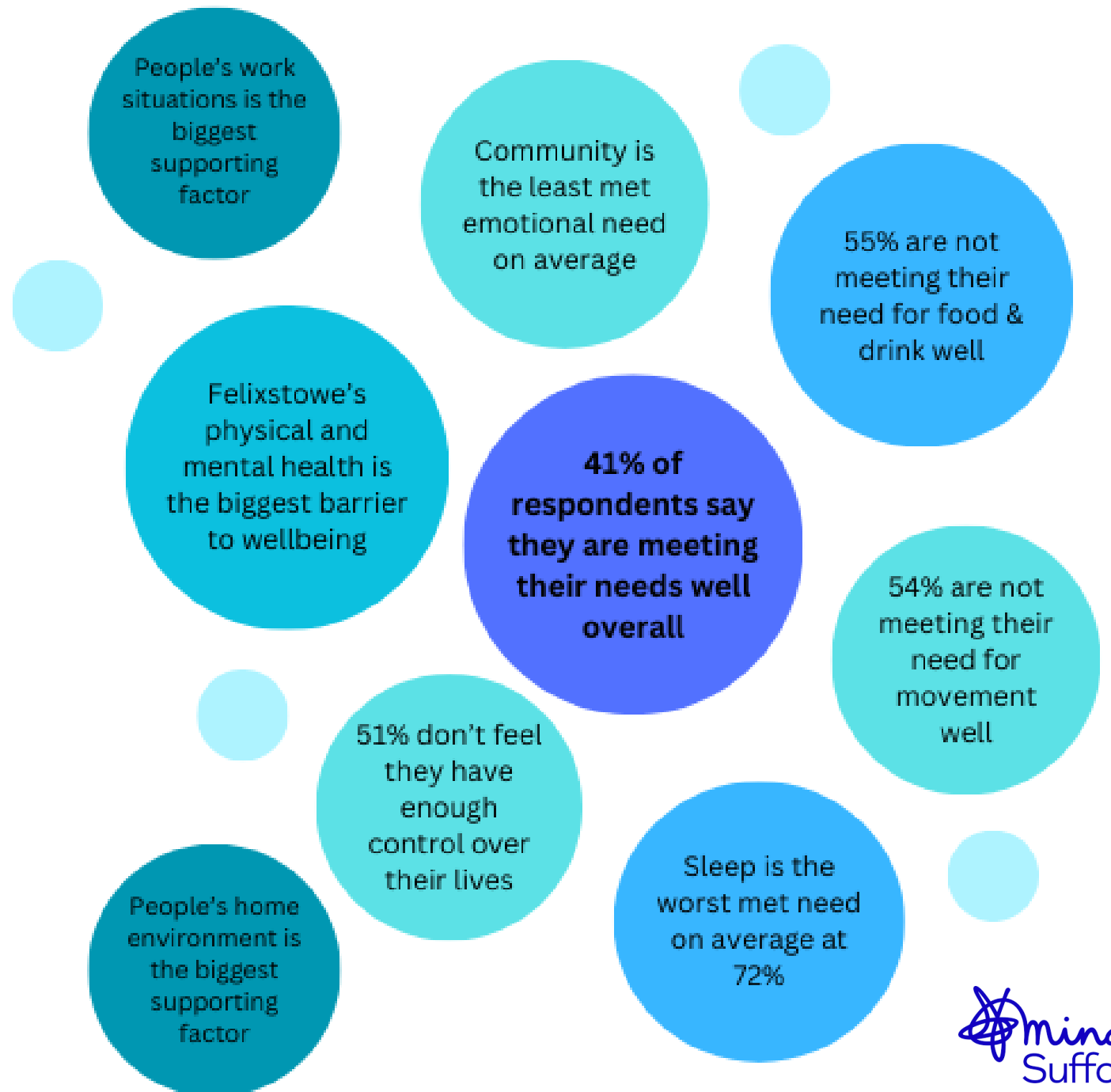
Key findings from Wellbeing in Felixstowe Report

Sleep helps calm emotions and repairs our body.

Community is met when we feel we're part of a group.

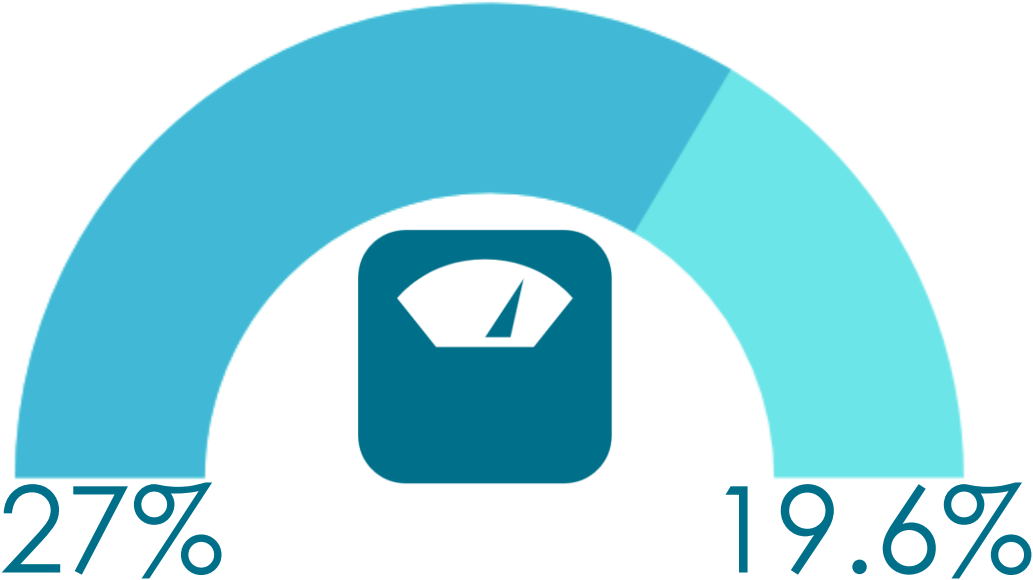
Control is feeling we are free to make choices for ourselves.

Food & Drink is about feeling you get energy, nutrition and pleasure from your diet.



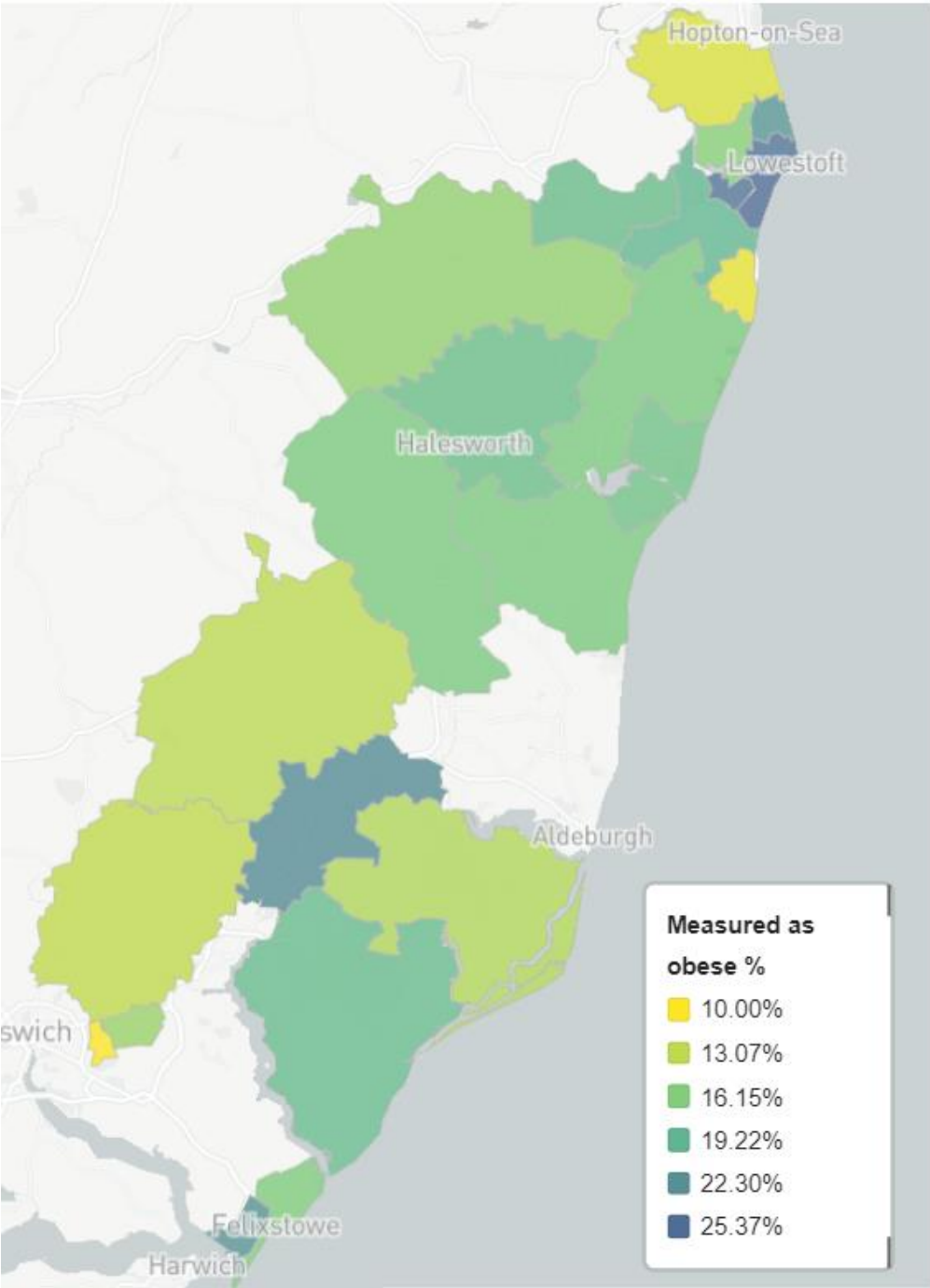
Health and social care

Childhood weight



Year 6 children
overweight or obese
This has significantly decreased
from 27% to 19.6%

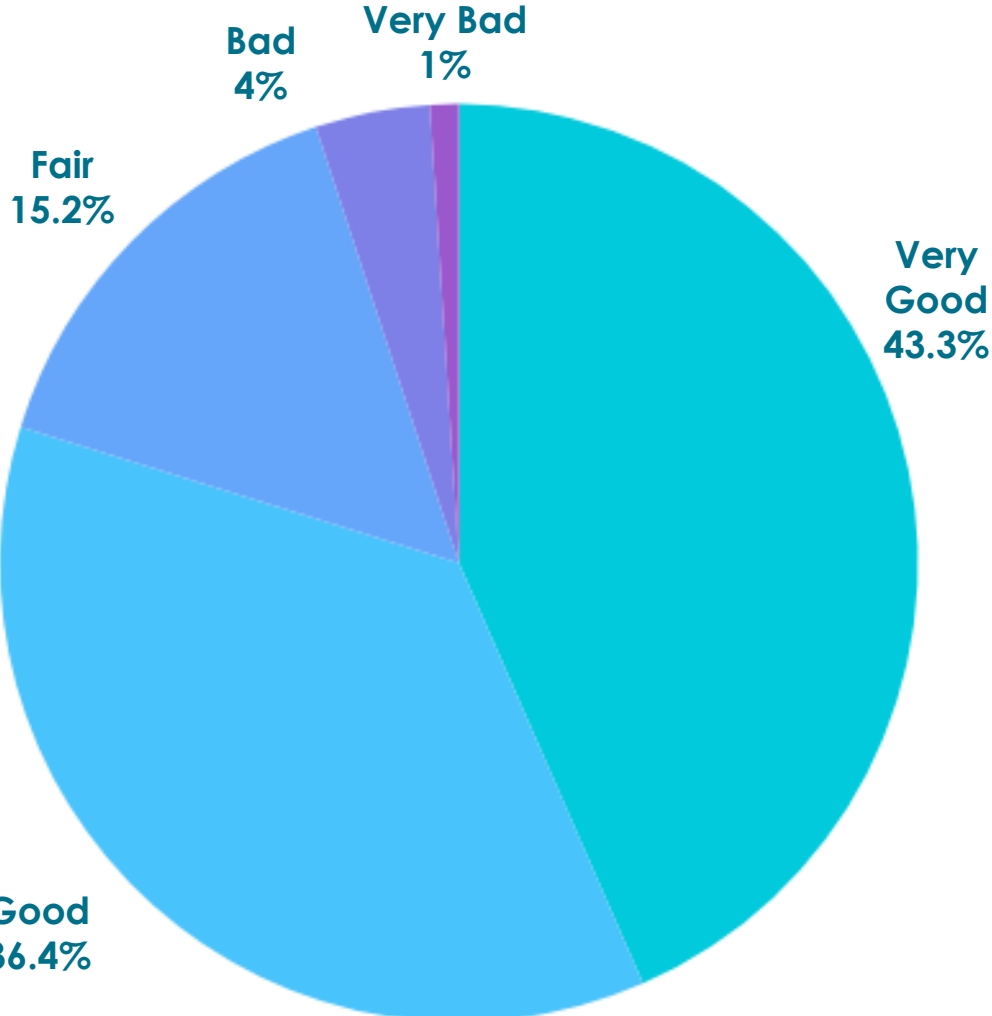
East Suffolk Average 18.7%



Source: Obesity Profile – OHID (phe.org.uk)

Health and social care

Adult Self-reported health



38.9%
of adults complete 2+ hours of exercise per week

Lowest CP: Lowestoft 37.3%
Highest CP: Kesgrave & Martlesham 43.9%
UK average: 39.1%



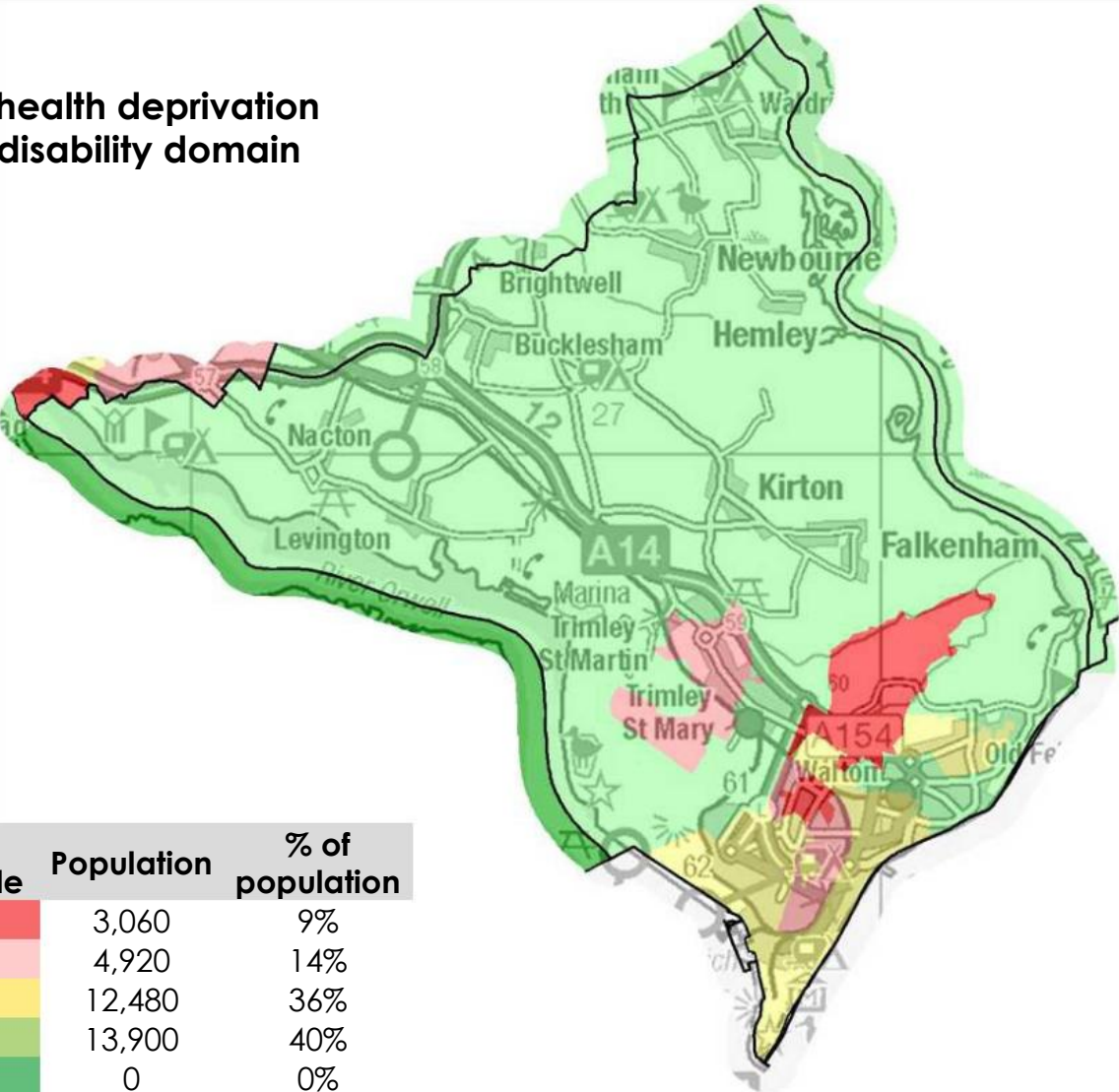
29.7%
of adults do not exercise

Lowest CP: Kesgrave & Martlesham 22.1%
Highest CP: Lowestoft 32.0%
UK average: 29.5%

Health and social care

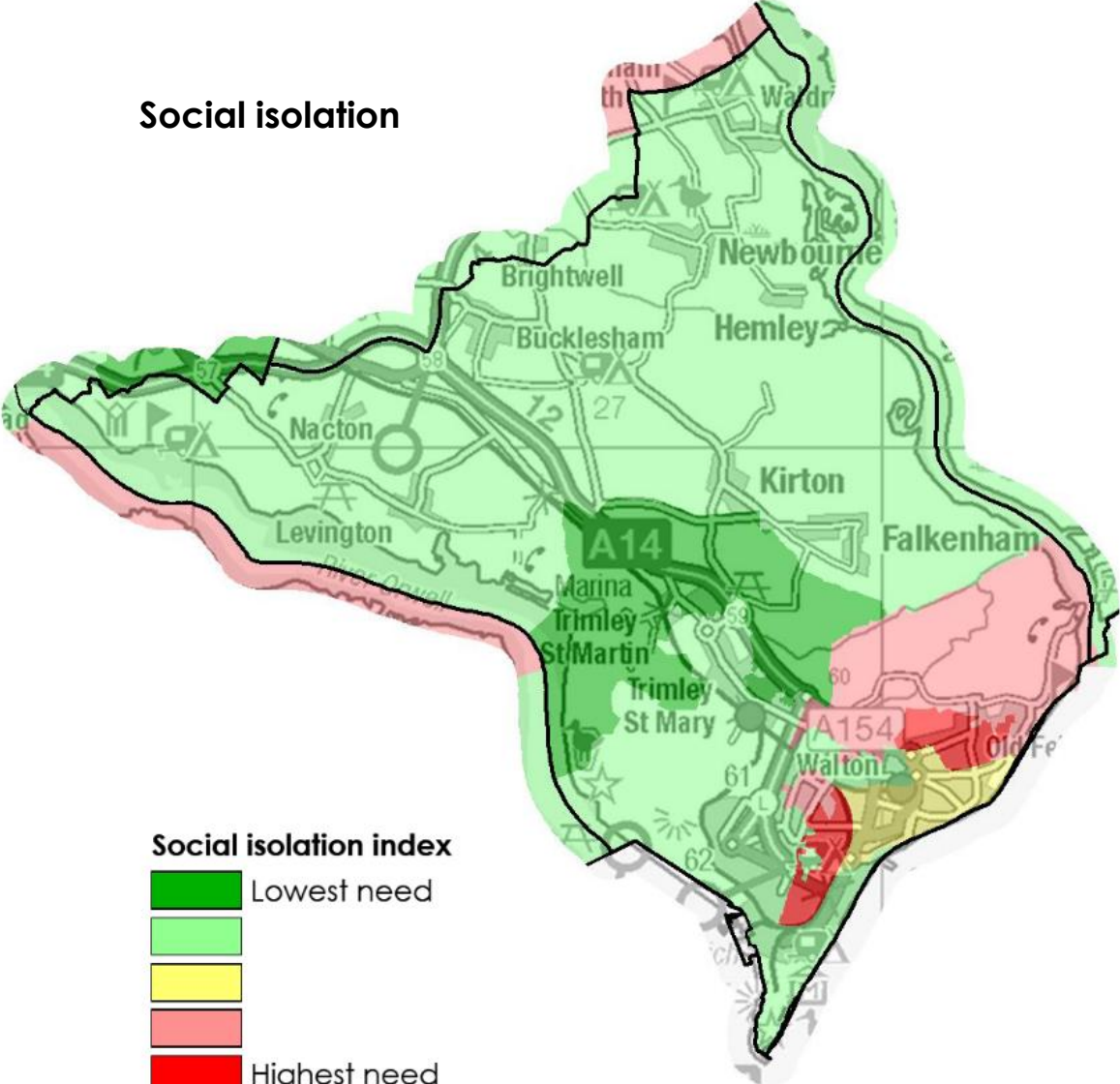
Disability and social isolation

IMD health deprivation and disability domain



IMD quintile	Population	% of population
1	3,060	9%
2	4,920	14%
3	12,480	36%
4	13,900	40%
5	0	0%

Social isolation



Social isolation index

- Lowest need
-
-
-
- Highest need

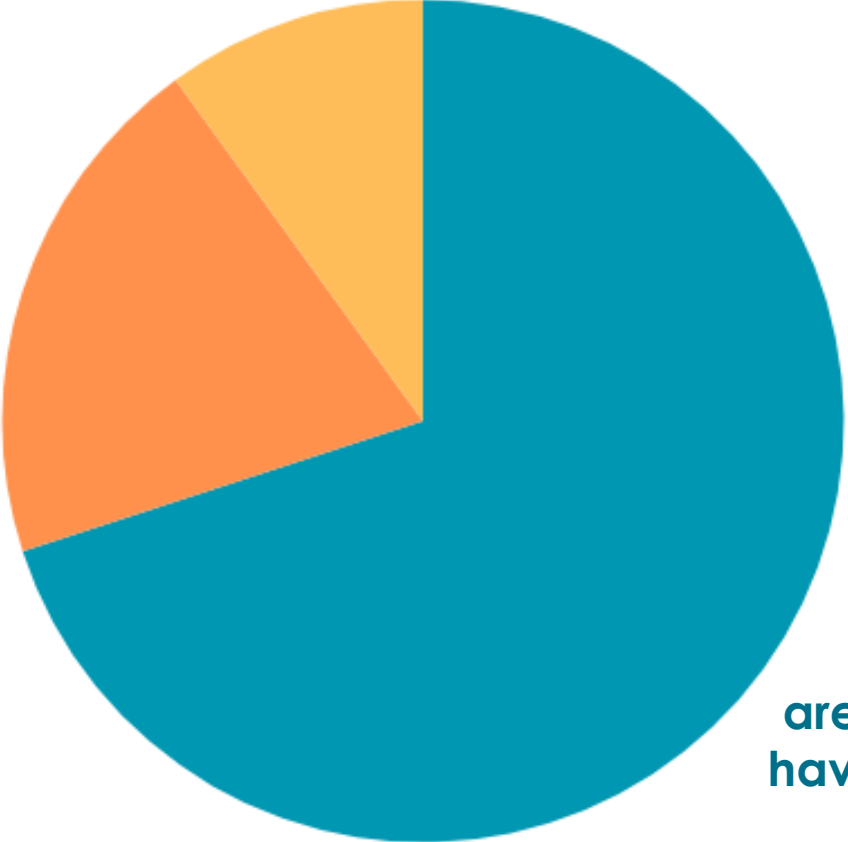
Source: DCLG Index of Multiple Deprivation 2019. Map © Crown copyright and database rights 2019 Ordnance Survey 100023395

Health and social care Disability and carers

9.1%
have a long term
condition but their
activities are not limited

21.4%
are disabled under
the equalities act

Of those disabled under the
Equalities Act, 8.8% said
their day-to-day activities
are limited a lot and 12.6%
said a little.



69.5%
are not disabled/
have no long-term
conditions

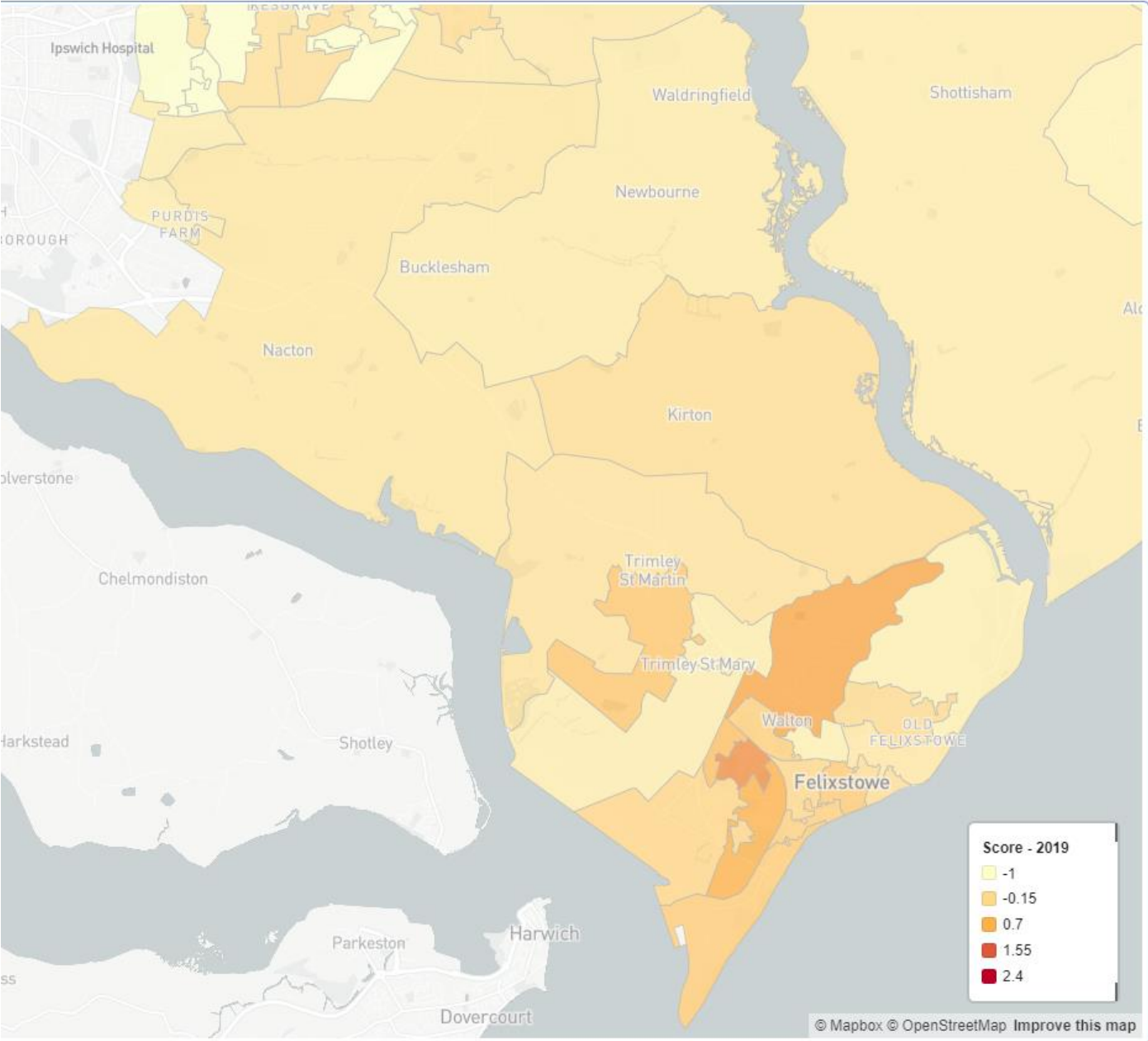
9.4%
of residents provide
some kind of unpaid
care
3% of which,
provide over 50 hours
a week

Health and social care Disability

This domain measures the risk of premature death and impairment of quality of life through poor physical or mental health.

It measures morbidity, disability and premature mortality but not aspects of behaviour or environment that may be predictive of future health deprivation.

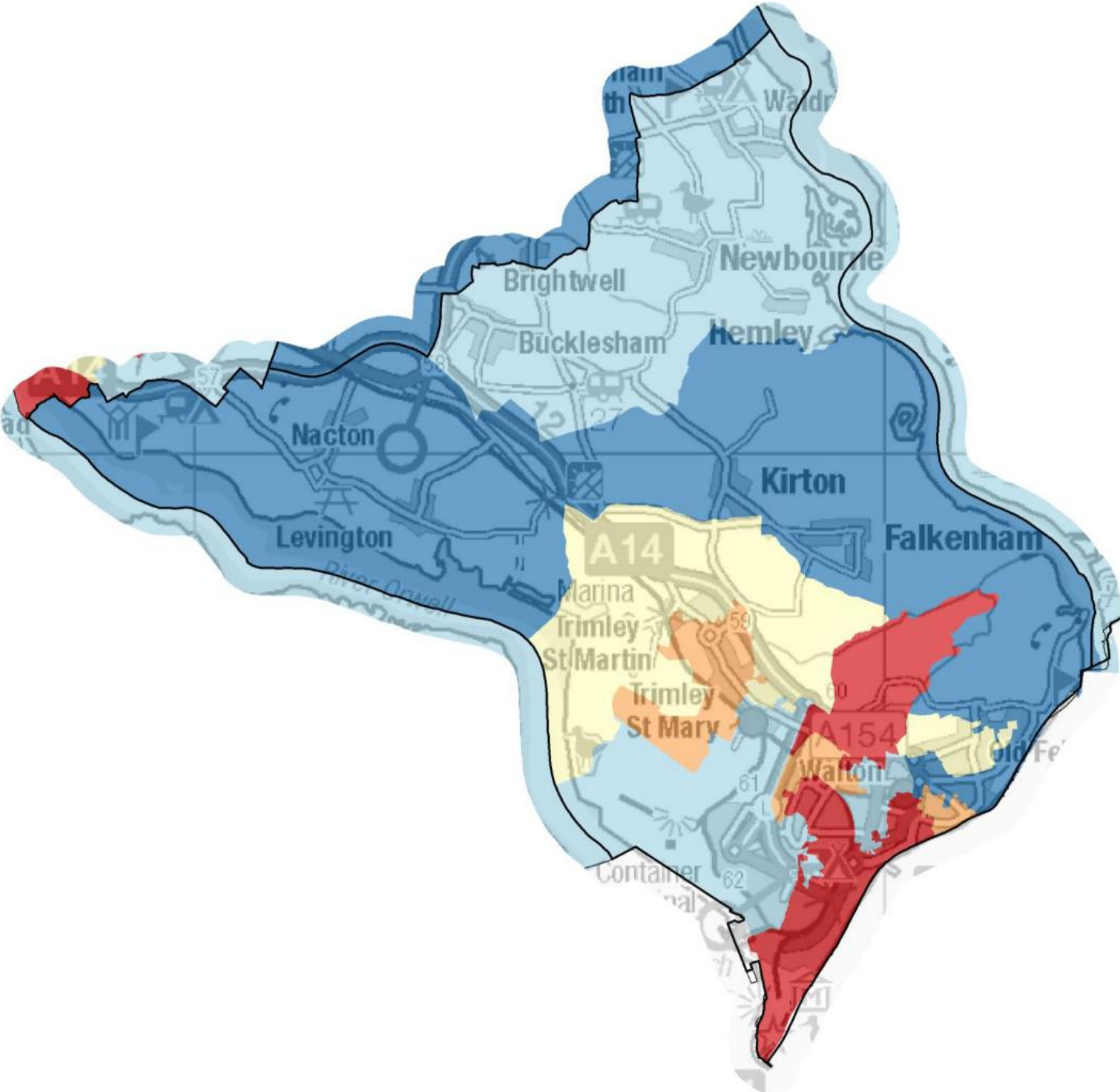
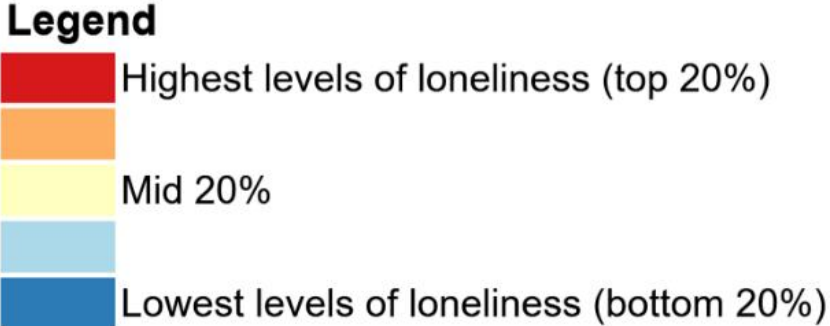
The higher the IMD score, the more deprived an area is.



Sources: English indices of deprivation – GOV.UK

Health and social care Loneliness

Age UK loneliness research



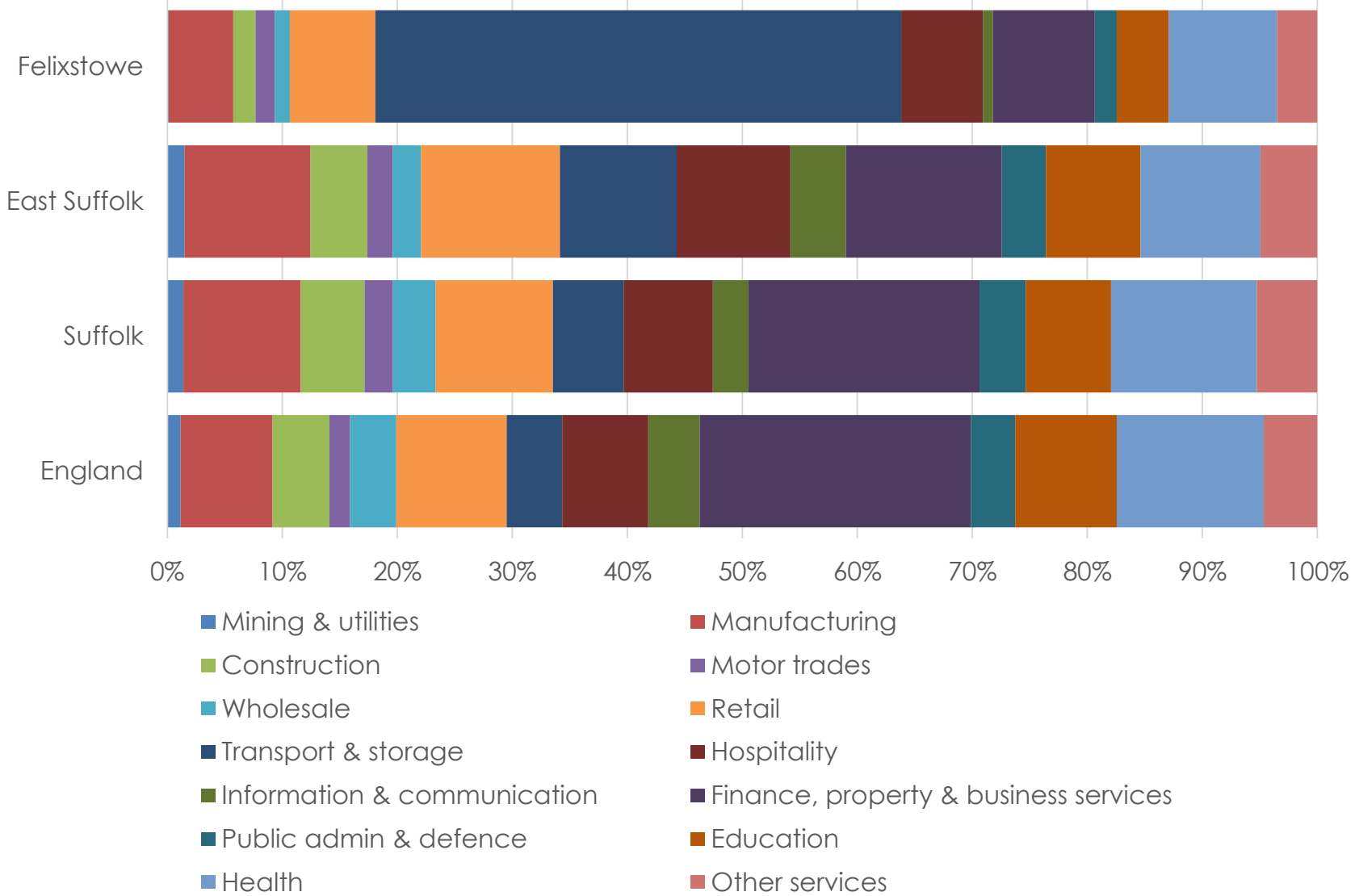
Source: Age UK 2016. Map © Crown copyright and database rights 2022 C

Employment and education

Employment



Transport & storage
accounts for almost
1 in 2
jobs in Felixstowe 1 in 17
across Suffolk and 1 in 20
in England



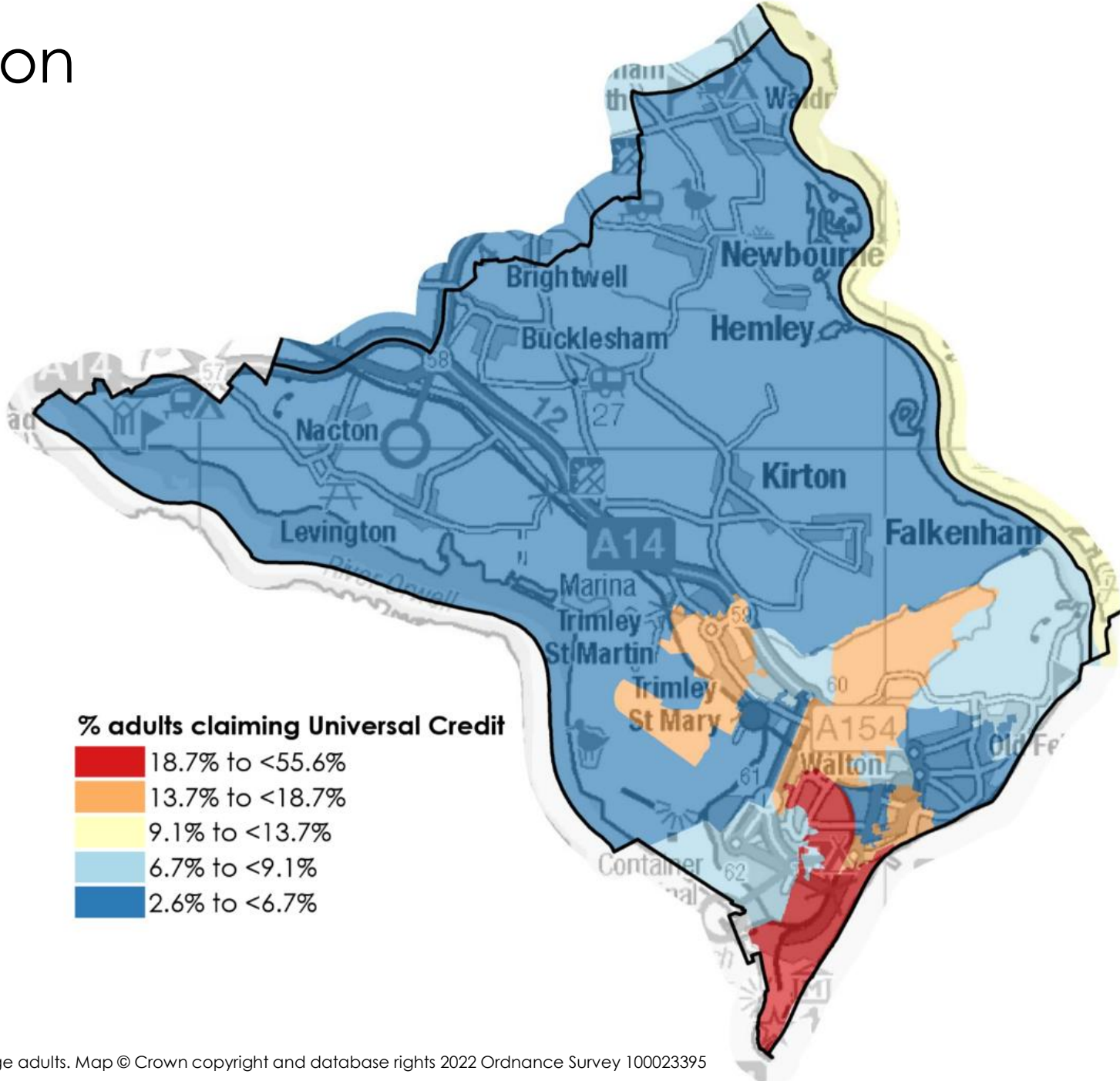
Source: ONS Business Register and Employment Survey 2020

Employment and education Benefit claimants



10.7%

of adults in receipt of
Universal Credit



Source: DWP, provisional January 2022 data applied to ONS 2020 mid-year estimates of working age adults. Map © Crown copyright and database rights 2022 Ordnance Survey 100023395

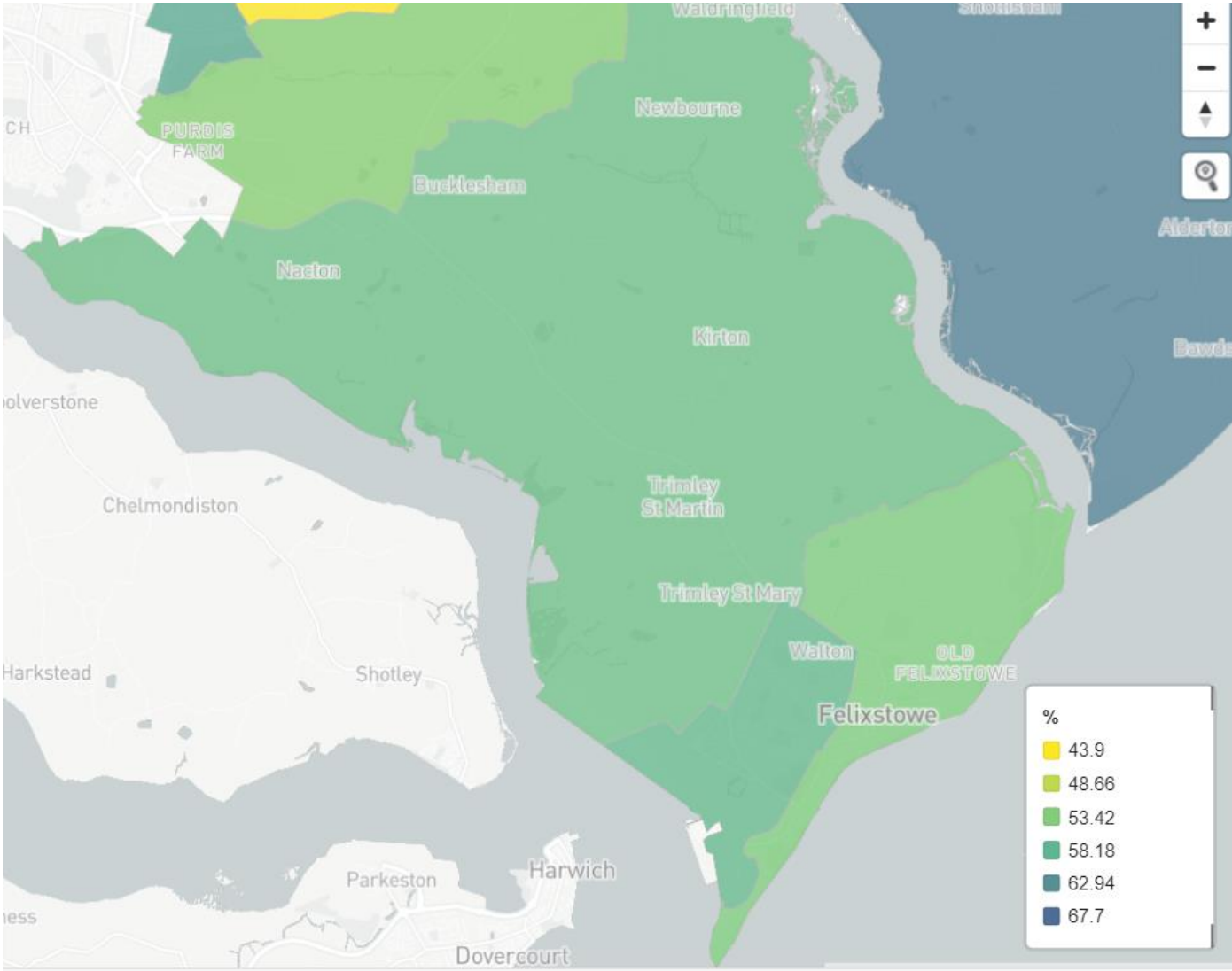
Employment and education

Universal Credit claimants not in employment



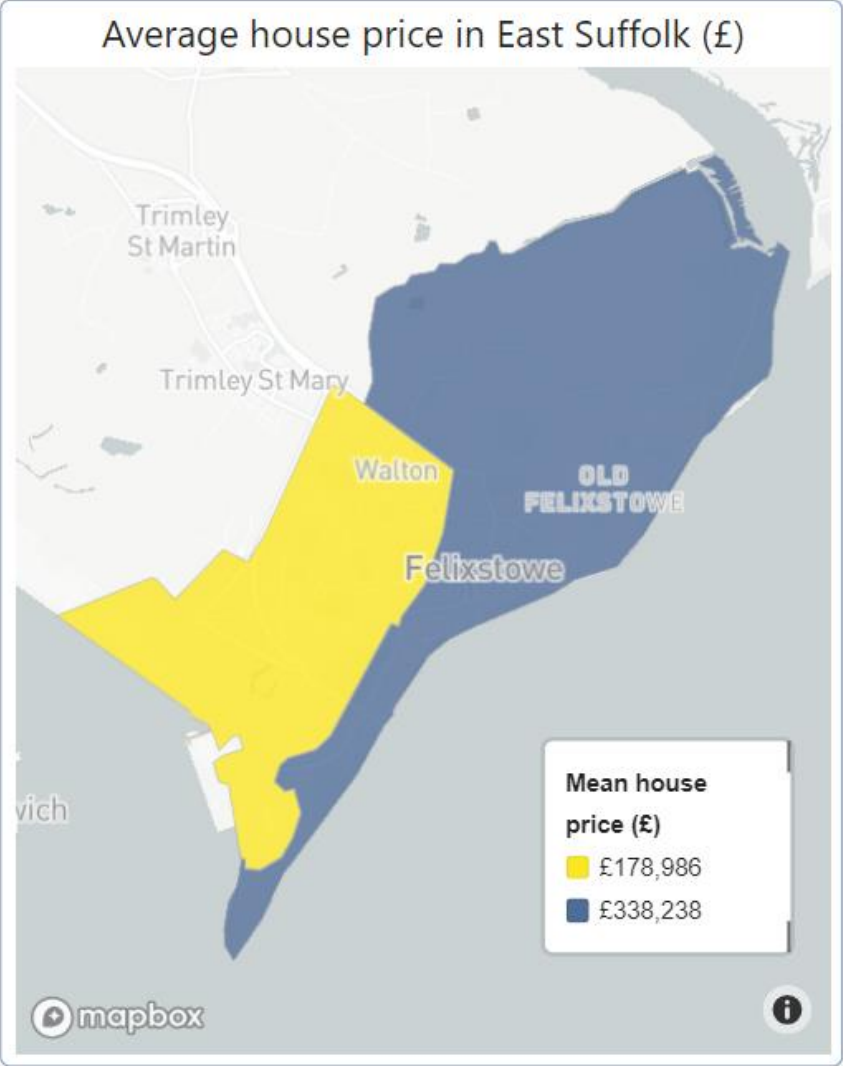
56%

of adults in receipt of Universal Credit are not in employment



Source: Stat-Xplore – Log in (dwp.gov.uk)

Housing Prices and tenure



Owned outright	43.8%
Owned with a mortgage or loan	24.5%
Shared ownership	0.3%
Rented from council or equivalent	2.3%
Rented from social landlord	11.6%
Rented from private landlord or letting agency	15.6%
Rented from other private owners	1.9%
Occupiers living rent free	0%

Source: ons.gov.uk Data taken from Dec 21 - 22

Housing

Central Heating and Fuel Poverty



2,830

houses in poor condition;
18.3% of all houses, the
lowest proportion of any CP

Highest CP: Framlingham &
Wickham Market 44.0%



520

hard to heat homes;
3.3% of all houses

Lowest CP: Kesgrave & Martlesham 1.4%
Highest CP: Lowestoft 3.7%

13.3%

of households in fuel poverty

Suffolk average 14.5%

75%

have mains gas
central heating, with
oil then electric
following.

236 households have
responded as having no
form of central heating.

This equates to **1.5%**

Environment

Air quality and attitudes towards climate change



48.5% pay more for green products (UK 50.7%)



2.6% do not buy something due to too much packaging (UK 2.7%)



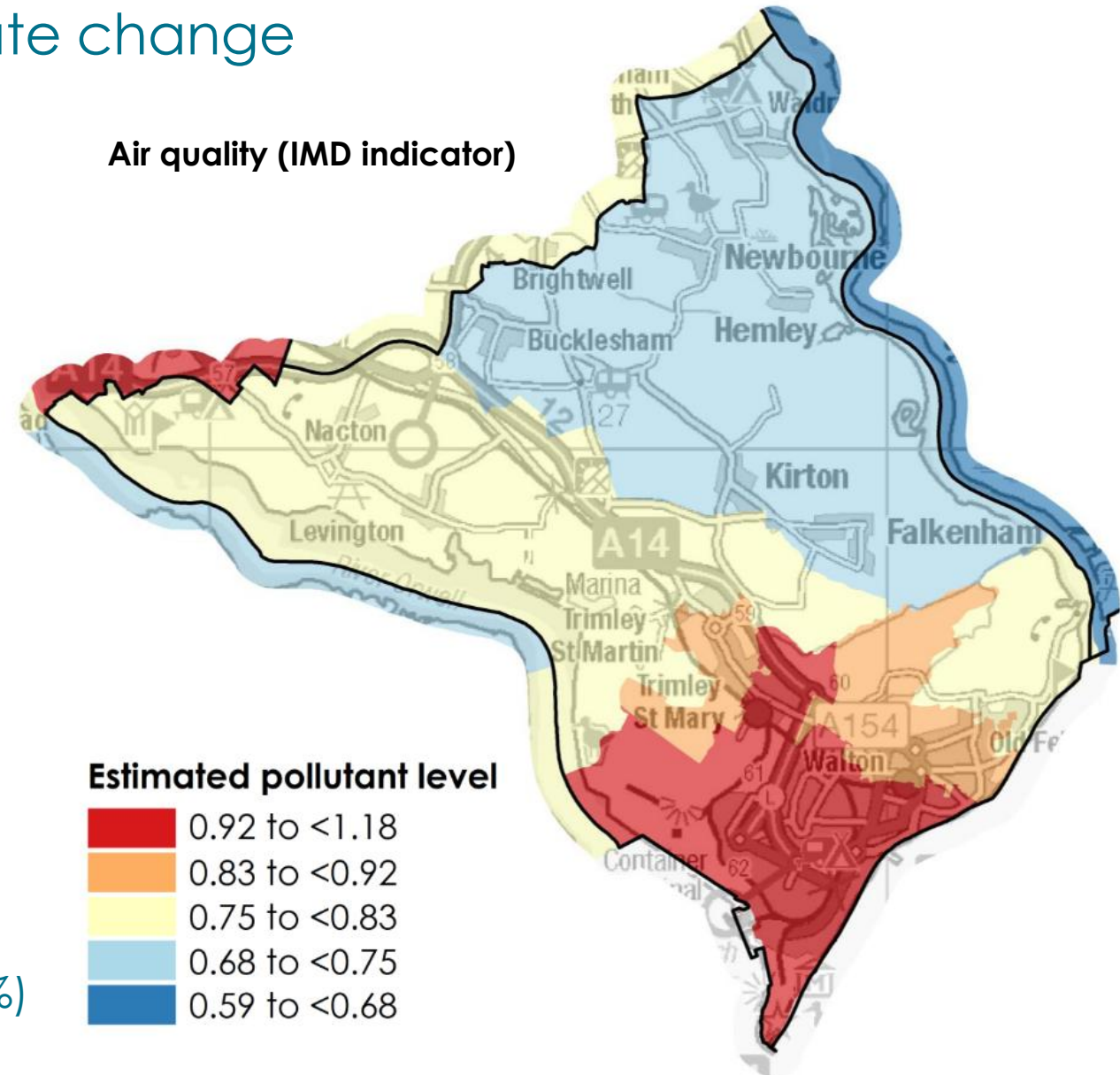
52.8% recycle items rather than throwing away (UK 50.9%)



30.9% make effort to cut down on water usage (UK 29.3%)



45.6% have a reasonable knowledge of climate change (UK 46.2%)



Environment

Cars and travel to work



54.7% method of travel to work is a car or van



8.4% method of travel to work is on foot



3.3% method of travel to work is a bicycle



1% method of travel to work is on a bus

Those that travel to work mainly report travelling less than 5km

Population mainly working from home (2021)



Felixstowe Peninsula
27.5%



Suffolk
26.5%



England
31.5%



83.4%

of homes are within 1/4 of a mile of a frequent* bus service, the 2nd highest of any CP



1.0%

of homes are more than 2 miles from a frequent* bus service, the 3rd lowest of any CP

Population by Parish

Parish name	Population
Felixstowe	24,560
Trimley St. Mary	3,830
Trimley St. Martin	2,130
Kirton	1,190
Nacton	870
Bucklesham	550
Waldringfield	460
Newbourne + Hemley	320
Levington + Stratton Hall	240
Falkenham	180