



Habitats Regulations Assessment Screening Statement

**Draft Rural Development
Supplementary Planning Document**

November 2023

Contents

1. Introduction	1
2. Protected sites covered by this report	1
3. Rural Development Supplementary Planning Document	1
4. Other Plans and Projects	1
5. Assessment of likely significant effects of the Draft Rural Development Supplementary Planning Document (SPD) on Habitat sites.....	3
7. Summary and conclusions	10
Appendix 1: Sources of background information	11
Appendix 2: Locations of Habitat sites	12
Habitat sites within 20km of the East Suffolk Council- Waveney Local Plan Area	12
Habitat sites within 20km of the East Suffolk Council- Suffolk Coastal Local Plan Area	16
Appendix 3: Relevant Habitat sites	20
Appendix 4: Natural England Consultation Response.....	30

1. Introduction

1.1 The Conservation of Habitats and Species Regulations (2017) (as amended) provide protection for sites that are of exceptional importance in respect of rare, endangered or vulnerable natural habitats and species. The network consists of Special Areas of Conservation (SACs) and Special Protection Areas (SPAs). Both types can also be referred to as European Sites. The National Planning Policy Framework (NPPF) states that Ramsar sites should be afforded the same level of protection and refers to SACs, SPAs and Ramsar sites as 'Habitat Sites'.

1.2 The requirement to undertake Habitats Regulation Assessment (HRA) of plans and projects is set out in the Conservation of Habitats and Species Regulations (2017) (as amended).

1.3 Regulation 105 of the Conservation of Habitats and Species Regulations (2017) states:

'Where a land use plan:

(a) Is likely to have a significant effect on a European site or a European offshore marine site (either alone or in combination with other plans or projects), and

(b) Is not directly connected with or necessary to the management of the site, The plan-making authority for that plan must, before the plan is given effect, make an appropriate assessment of the implications for the site in view of that site's conservation objectives.'

1.4 The HRA is therefore undertaken in stages and should conclude whether or not a proposal or policy would adversely affect the integrity of any sites.

Stage 1: Determining whether a plan is likely to have a significant effect on a European site. This needs to take account of the likely impacts in combination with other relevant plans and projects. This assessment should be made using the precautionary principle. The screening assessment must reflect the outcomes of the 2018 judgement of the Court of Justice of the European

Union¹, which has ruled that where mitigation is necessary this must be identified through an Appropriate Assessment.

Stage 2: Carrying out Appropriate Assessment and ascertaining the effect on site integrity. The effects of the plan on the conservation objectives of sites should be assessed, to ascertain whether the plan has an adverse effect on the integrity of a European site.

Stage 3: Identifying mitigation measures and alternative solutions. The aim of this stage is to find ways of avoiding or significantly reducing adverse impacts, so that site integrity is no longer at risk. If there are still likely to be negative impacts, the option should be dropped, unless exceptionally it can be justified by imperative reasons of overriding public interest.

1.5 The draft Rural Development Supplementary Planning Document (SPD) is being produced by East Suffolk Council. The SPD will apply to the whole of the East Suffolk Council area, outside of the Broads. This report considers whether there are likely to be significant effects on protected Habitat sites and where a full Appropriate Assessment may be required.

1.6 East Suffolk (outside of the Broads) is covered by two Local Plans, the East Suffolk Council - Suffolk Coastal Local Plan adopted September 2020 and the Waveney Local Plan adopted March 2019.

1.7 Both Local Plans were subject to Habitats Regulations Assessment as part of their production. Where screening identified a likely significant effect, Appropriate Assessment was undertaken and the mitigation measures identified were incorporated within the Plans, resulting in conclusions that the plans will not lead to any adverse effects on Habitat sites within and in the vicinity of the (then) Suffolk Coastal and Waveney Districts. Both Appropriate Assessments identified recreational disturbance particularly from dog walkers as a significant effect. The Council has subsequently produced a Recreational Avoidance and Mitigation Strategy (RAMS) and requires payment towards

¹ C-323/17 – People over Wind, Peter Sweetman v Coillte Teoranta

mitigation from residential developments within 13km of the protected Habitat sites.

2. Protected sites covered by this report

- 2.1 Sites included in this assessment are listed in Table 1. This includes all sites that are within 20km of East Suffolk. The locations of the sites are shown on maps in Appendix 2 and the Qualifying Features and Conservation Objectives of the sites are contained in Appendix 3, along with a summary of the pressures and threats as documented in the Appropriate Assessments for the Local Plans.

Table 1: Relevant Habitat sites

Name
Alde-Ore and Butley Estuaries SAC,
Alde-Ore Estuary SPA, Ramsar
Benacre to Easton Bavents SPA
Benacre to Easton Bavents Lagoons SAC
Breydon Water SPA, Ramsar
Broadland SPA, Ramsar
Deben Estuary SPA, Ramsar
Dew's Ponds SAC
Great Yarmouth North Denes SPA
Haisborough, Hammond and Winterton SAC
Minsmere to Walberswick Heaths & Marshes SAC
Minsmere – Walberswick SPA, Ramsar
Norfolk Valley Fens SAC
Outer Thames Estuary SPA
Orfordness – Shingle Street SAC
Sandlings SPA
Southern North Sea SAC
Staverton Park and The Thicks, Wantisden SAC
Stour and Orwell Estuaries SPA, Ramsar
The Broads SAC
Winterton-Horsey Dunes SAC

3. Rural Development Supplementary Planning Document

- 3.1 This HRA report reviews the draft Rural Development Supplementary Planning Document (SPD).
- 3.2 The draft Rural Development SPD provides information and advice concerning the implementation of the Council’s Local Plan policies that relate to development in rural areas. This SPD covers a broad range of rural issues and topics including guidance on barn conversions, rural worker dwellings, farm diversification, rural annexes, economic development, equestrian development and more. The guidance contained in the draft SPD will assist in the implementation of Local Plan and Neighbourhood Plan policies for East Suffolk. The SPD, when adopted, will be a material consideration in the determination of applications for planning permission. The SPD does not cover parts of East Suffolk that are within the Broads, for which the Broads Authority is the local planning authority.
- 3.3 The introduction to the SPD explains the policy context, the purpose of the SPD, and some information about the preparation of the SPD. As this section is descriptive it has not been included in the screening table in section 5 of this report.
- 3.4 Other chapters in the SPD provide detailed guidance on different aspects of rural development. These chapters cover a number of aspects and considerations, including: rural workers dwellings, annexes, residential curtilages, rural buildings and barn conversions, economic development, equestrian development, tourism, renewable energy generation, wastewater management.

4. Other Plans and Projects

- 4.1 Regulation 105 of the Habitats Regulations requires consideration to be given to whether a Plan will have an effect either alone or in combination with other plans or projects.
- 4.2 As noted in the introduction, the other key plans are the Local Plans. The Local Plans set out the broad scale and distribution of development across the area of East Suffolk formerly covered by Suffolk Coastal District and Waveney District.
- 4.3 The draft Rural development Supplementary Planning Document (SPD) adds specific detail a number of policies within the Suffolk Coastal Local Plan and the Waveney Local Plan:

Suffolk Coastal Local Plan:

- Policy SCLP4.5: Economic Development in Rural Areas
- Policy SCLP4.6: Conversion and Replacement of Rural Buildings for Employment Use
- Policy SCLP4.7: Farm Diversification
- Policy SCLP5.5: Conversion of Buildings in the Countryside for Housing
- Policy SCLP5.6: Rural Workers Dwellings
- Policy SCLP5.13 Residential Annexes
- Policy SCLP5.14: Extensions to Residential Curtilages
- Policy SCLP6.1: Tourism
- Policy SCLP6.2: Tourism Destinations
- Policy SCLP6.3: Tourism within the AONB and Heritage Coast
- Policy SCLP6.4: Tourism outside of the AONB and Heritage Coast
- Policy SCLP6.5: New Tourist Accommodation
- Policy SCLP7.1: Sustainable Transport
- Policy SCLP9.1: Low Carbon & Renewable Energy
- Policy SCLP9.2: Sustainable Construction
- Policy SCLP10.1: Biodiversity and Geodiversity
- Policy SCLP10.3: Environmental Quality
- Policy SCLP10.4: Landscape Character
- Policy SCLP11.1: Design Quality
- Policy SCLP11.2: Residential Amenity
- Policy SCLP11.3: Historic Environment

Waveney Local Plan:

- Policy WLP8.8: Rural Workers Dwellings in the Countryside
- Policy WLP8.10: Residential Annexes in the Countryside
- Policy WLP8.11: Conversion of Rural Buildings to Residential Use
- Policy WLP8.14: Conversion and Replacement of Rural Buildings for Employment Use
- Policy WLP8.15: New Self Catering Tourist Accommodation
- Policy WLP8.21: Sustainable Transport
- Policy WLP8.27: Renewable and Low Carbon Energy
- Policy WLP8.28: Sustainable Construction
- Policy WLP8.29: Design
- Policy WLP8.31: Lifetime Design
- Policy WLP8.34: Biodiversity and Geodiversity
- Policy WLP8.35: Landscape Character
- Policy WLP8.37: Historic Environment

4.4 A screening process considered each policy in the Suffolk Coastal and Waveney Local Plans and concluded whether significant effects were likely and if Appropriate Assessment was therefore needed. The Appropriate Assessments of the Suffolk Coastal and Waveney Local Plans considered the following themes:

- Recreation pressure,
- Air quality and traffic emissions,
- Biodiversity net gain,
- Urbanisation,
- Water quality, resources and treatment, and
- Flood risk and coastal erosion.

4.5 Mitigation measures were identified within the Appropriate Assessments and incorporated within both Local Plans, resulting in a conclusion that neither plan would lead to any adverse effects on Habitat sites within and in the vicinity of the (then) Suffolk Coastal and Waveney Districts.

5. Assessment of likely significant effects of the Draft Rural Development Supplementary Planning Document (SPD) on Habitat sites

- 5.1 Table 3 below considers each relevant section of the draft Rural Development Supplementary Planning Document (SPD) in relation to whether there is potential for a likely significant effect on protected Habitat sites. This constitutes Stage 1 as set out under paragraph 1.4 above. Consideration is given to the characteristics and location of the protected sites. The relevant sections are considered within the context of the Local Plan policies from which they hang and which have themselves been subject to Habitats Regulations Assessment, as set out in section 4 above.

Table 3: Likely significant effects of the Draft Rural Development Supplementary Planning Document

Chapter	Assessment of potential impact on Habitat sites	Habitat sites that could possibly be affected	Likely significant effect identified	AA needed?
Rural Workers Dwellings	<p>This chapter sets out circumstances when rural workers dwelling may be permitted. Including information relating to evidence requirements, design and the use of occupancy conditions. The guidance is clear that the use of this policy must not result in a proliferation of housing in the countryside.</p> <p>The guidance contained here clarifies the approach to rural workers dwellings but does not in itself promote new development beyond what is permissible under the Local Plan policy and will therefore not lead to likely significant effects on Habitat Sites.</p>	None	None	No
Rural Annexes	<p>This chapter clarifies the approach to the consideration of residential annexes in the countryside. It includes guidance around when planning permission may or may not be required and the design of annexes.</p>	None	None	No

Chapter	Assessment of potential impact on Habitat sites	Habitat sites that could possibly be affected	Likely significant effect identified	AA needed?
	<p>The chapter provides further detail for those considering annex development. The guidance contained here does not in itself promote new development beyond what is accounted for in the Local Plan and will therefore not lead to likely significant effects on Habitat Sites.</p>			
<p>Rural Residential Curtilage Expansion</p>	<p>This chapter sets out guidance to explain which uses are regarded as residential and when planning permission is required for a change of use of land from agricultural to residential. It includes consideration of biodiversity impacts and clarifies that the primary objective of the Rural SPD is to protect and enhance the local ecology and biodiversity and that this will take precedence over extensions to residential curtilage.</p> <p>The guidance in this chapter seeks to minimise impacts on biodiversity and does not in itself promote new development and will therefore not lead to likely significant effects on Habitat Sites.</p>	<p>None</p>	<p>None</p>	<p>No</p>

Chapter	Assessment of potential impact on Habitat sites	Habitat sites that could possibly be affected	Likely significant effect identified	AA needed?
Rural Buildings and Barn Conversions	<p>This chapter sets out guidance for the consideration of proposals to convert rural buildings and barns. It includes guidance on design, scale, heritage, landscape impacts, and biodiversity impacts (including ecological assessment requirements). It also includes guidance around the prior approval process and clarifies that the Habitat Directive and Habitat’s Regulations will apply to prior approval applications.</p> <p>The guidance in this chapter does not in itself promote new development beyond what is accounted for in Local Plan policy and will therefore not lead to likely significant effects on Habitat Sites.</p>	None	None	No
Economic Development	<p>This chapter explains the consideration of applications for economic development type uses in rural areas. It covers specific guidance on:</p> <ul style="list-style-type: none"> • Factories and Workshops • Development of Former Airfields • Storage and Distribution 	None	None	No

Chapter	Assessment of potential impact on Habitat sites	Habitat sites that could possibly be affected	Likely significant effect identified	AA needed?
	<ul style="list-style-type: none"> • Farm Diversification • Dog Paddocks <p>as well as more general guidance including: location, access, amenity, design, and landscaping.</p> <p>The guidance in this chapter does not in itself promote new development beyond what is accounted for in Local Plan policy and will therefore not lead to likely significant effects on Habitat Sites.</p>			
Equestrian Development	<p>This chapter sets out the Council’s expectations regarding equestrian development proposals, including clarifying when planning permission is required. Guidance is provided in relation to wildlife and landscape impact, heritage impacts, access and environmental protection considerations.</p> <p>The guidance aims to support applicants and does not in itself promote new development beyond what is accounted for in Local Plan policy and will therefore not</p>	None	None	No

Chapter	Assessment of potential impact on Habitat sites	Habitat sites that could possibly be affected	Likely significant effect identified	AA needed?
	lead to likely significant effects on Habitat Sites.			
Tourism	<p>This chapter sets out guidance regarding tourism uses in rural areas. It includes specific clarification of RAMS considerations in relation to tourism uses.</p> <p>The guidance in this chapter does not in itself promote new development beyond what is accounted for in Local Plan policy and will therefore not lead to likely significant effects on Habitat Sites.</p>	None	None	No
Small Scale Renewable Energy Generation	<p>This chapter provides guidance for applicants looking to develop small scale on-site renewable and low carbon energy generation in rural areas. It includes on guidance on whether planning permission is required.</p> <p>The guidance aims to support applicants and does not in itself promote new development and will therefore not lead to likely significant effects on Habitat Sites.</p>	None	None	No

Chapter	Assessment of potential impact on Habitat sites	Habitat sites that could possibly be affected	Likely significant effect identified	AA needed?
Wastewater Management in Rural Areas	<p>This section provides guidance in relation to development in rural areas with no connection to the public sewerage system.</p> <p>The guidance aims to support applicants and does not in itself promote new development and will therefore not lead to likely significant effects on Habitat Sites.</p>	None	None	No

7. Summary and conclusions

- 7.1 The draft Rural Development Supplementary Planning Document (SPD) provides additional guidance to inform the determination of planning applications alongside the Waveney and Suffolk Coastal Local Plans. The draft Rural Development SPD provides further guidance and advice concerning the implementation of the Council's Local Plan policies that relate to development in rural areas. The guidance contained in the draft SPD will assist in the implementation of Local Plan and Neighbourhood Plan policies. The SPD, when adopted, will be a material consideration in the determining of applications for planning permission.
- 7.2 Implementation of the Rural Development Supplementary Planning Document will not lead to likely significant effects on protected Habitat sites.
- 7.3 Natural England were consulted on a draft of this Screening Statement as statutory nature conservation body and their views were taken into account in finalising this screening statement. Their response is contained in Appendix 4.

Signed:  Dated: 13 November 2023

Andrea McMillan
Planning Manager (Policy, Delivery and Specialist Services)
East Suffolk Council

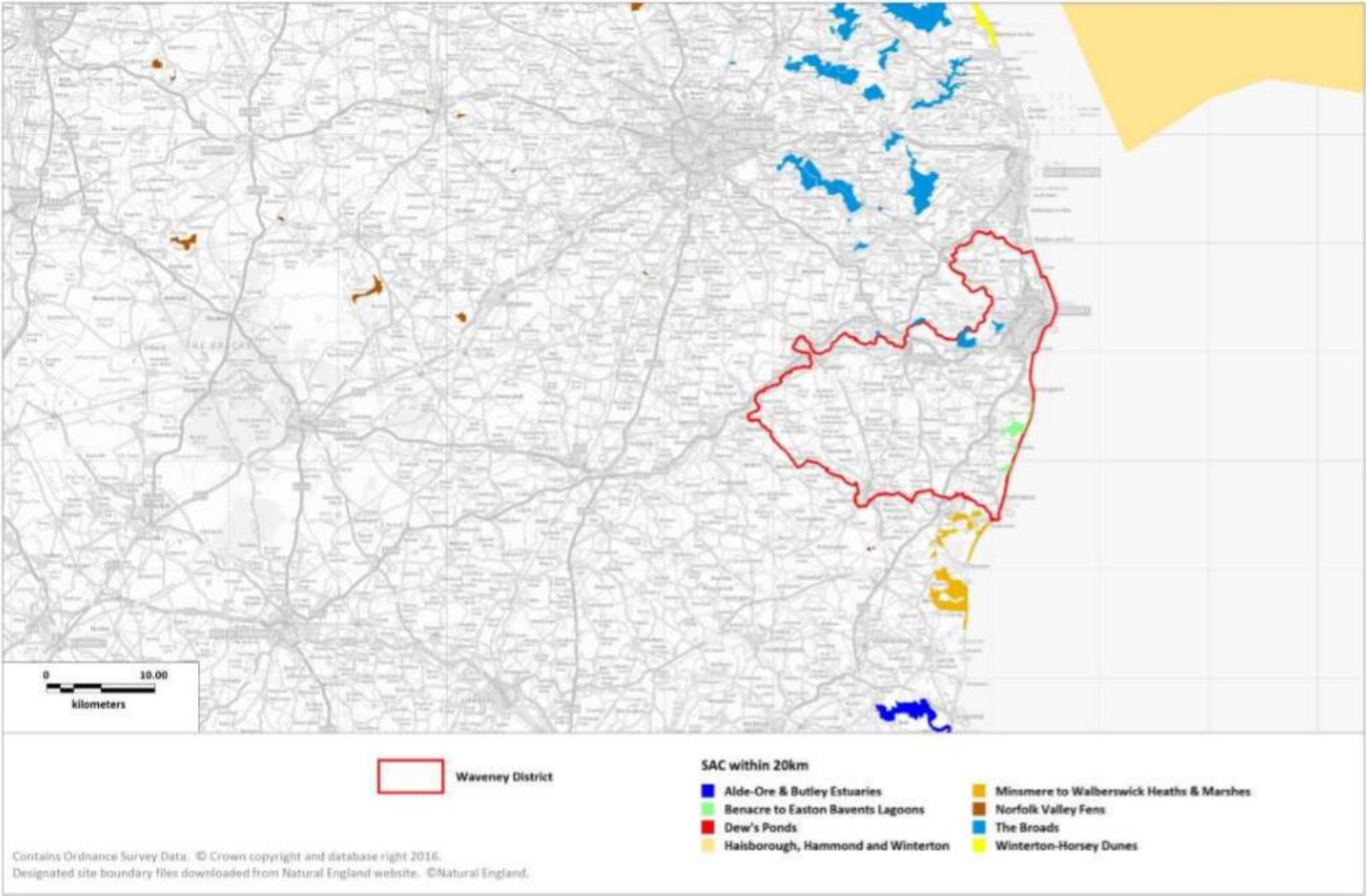
Appendix 1: Sources of background information

- East Suffolk Council – Suffolk Coastal Local Plan (September 2020)
- East Suffolk Council – Waveney Local Plan (March 2019)
- Habitats Regulations Assessment for the Suffolk Coastal Local Plan at Final Draft Plan stage (incorporating Main Modifications) (May 2020)
- The Habitats Regulations Assessment of the Waveney Local Plan (December 2018)
- Habitats Regulations Assessment Recreational Disturbance Avoidance and Mitigation Strategy for Ipswich Borough, Babergh District, Mid Suffolk District and East Suffolk Councils (May 2019)

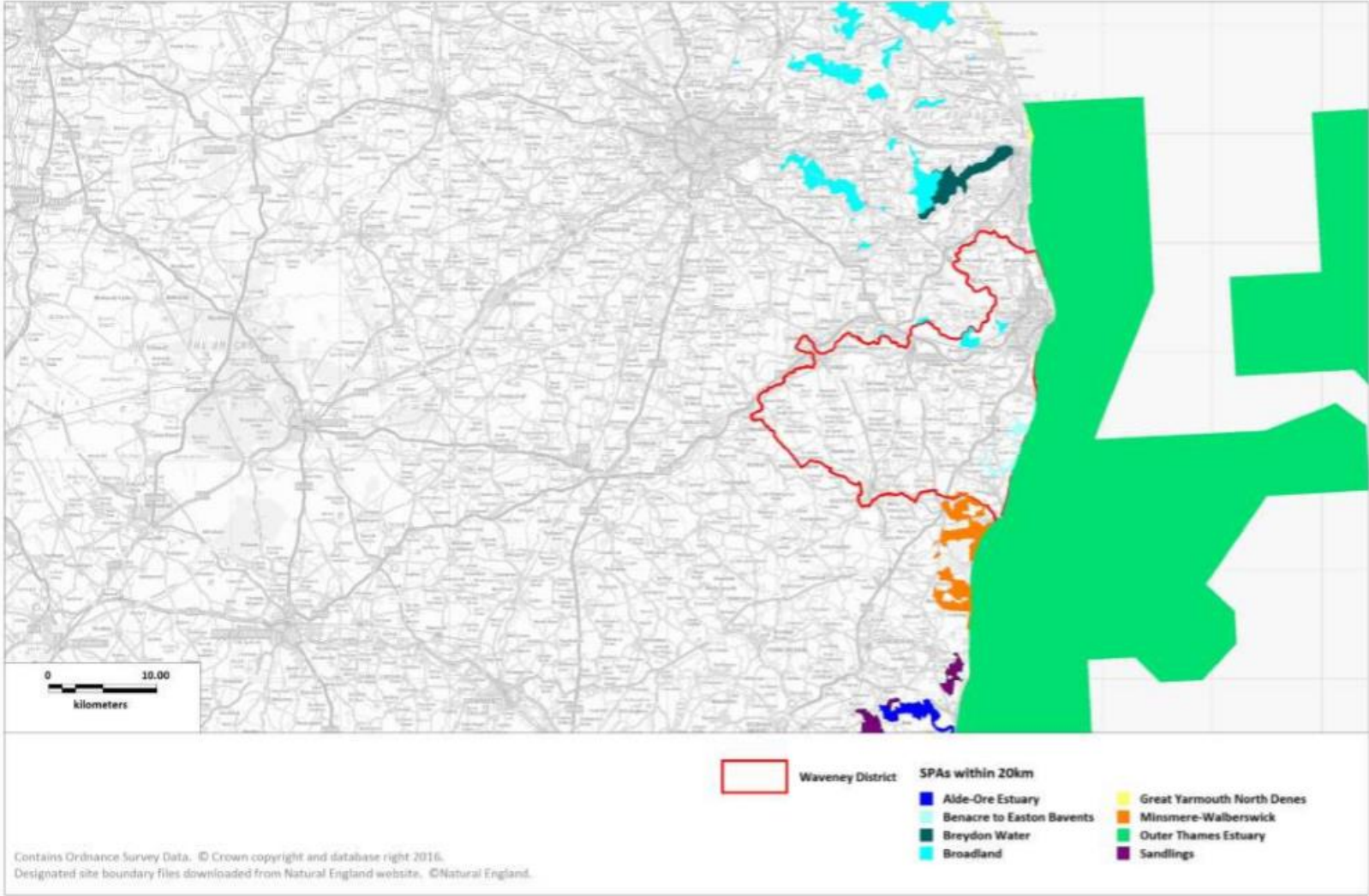
Appendix 2: Locations of Habitat sites

Habitat sites within 20km of the East Suffolk Council-
Waveney Local Plan Area

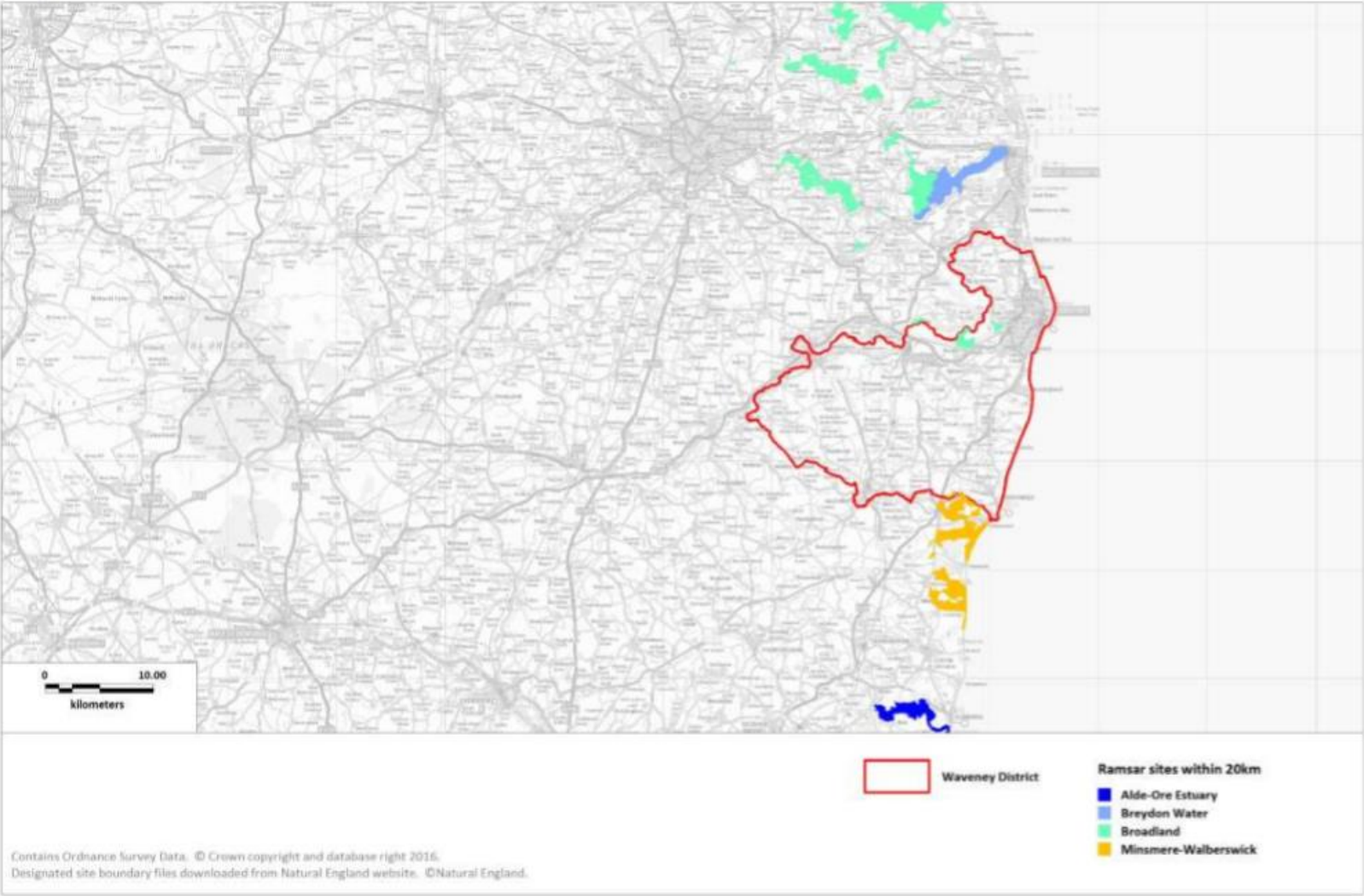
Map 1: SACs



Map 2: SPAs

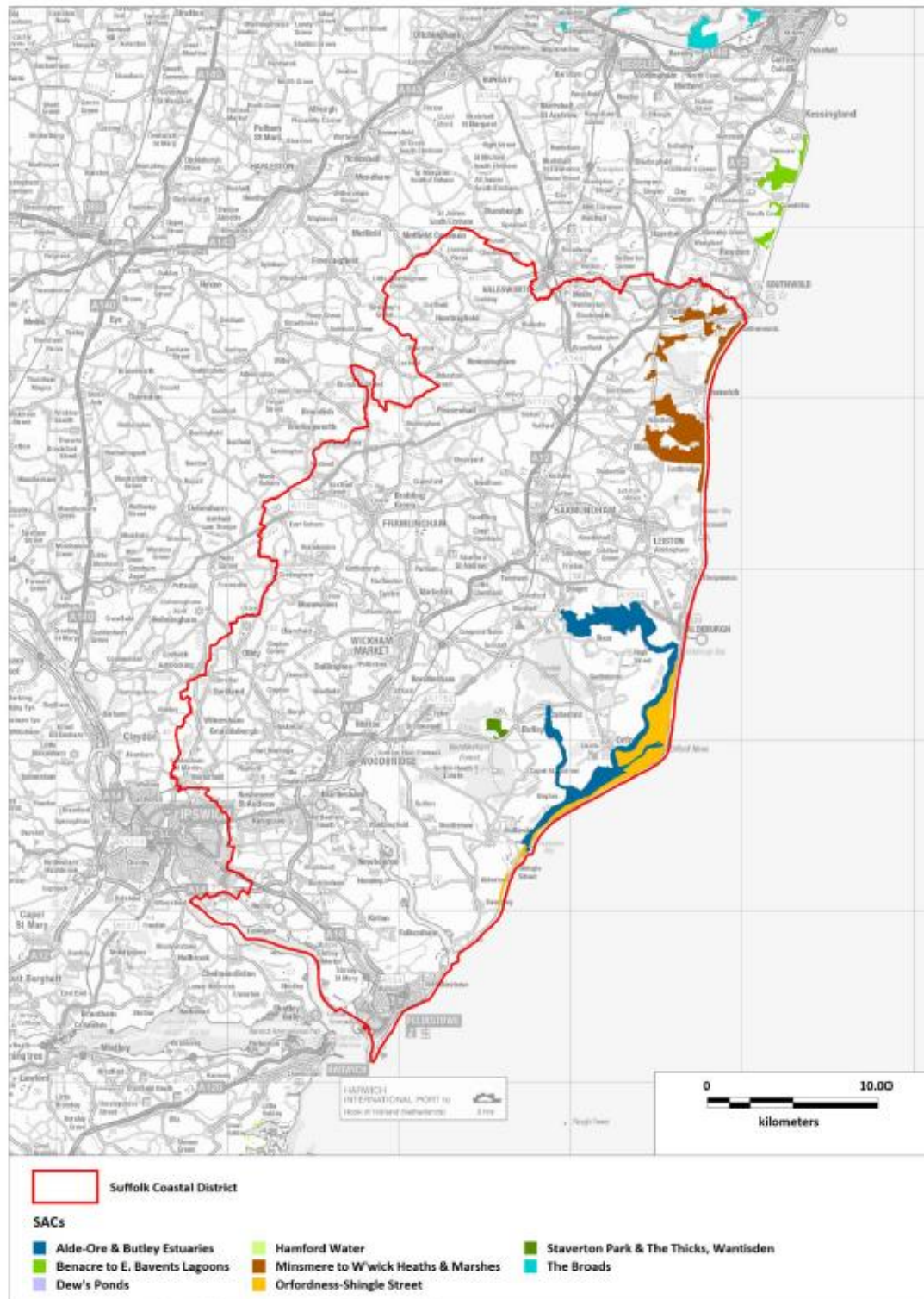


Map 3: Ramsar Sites



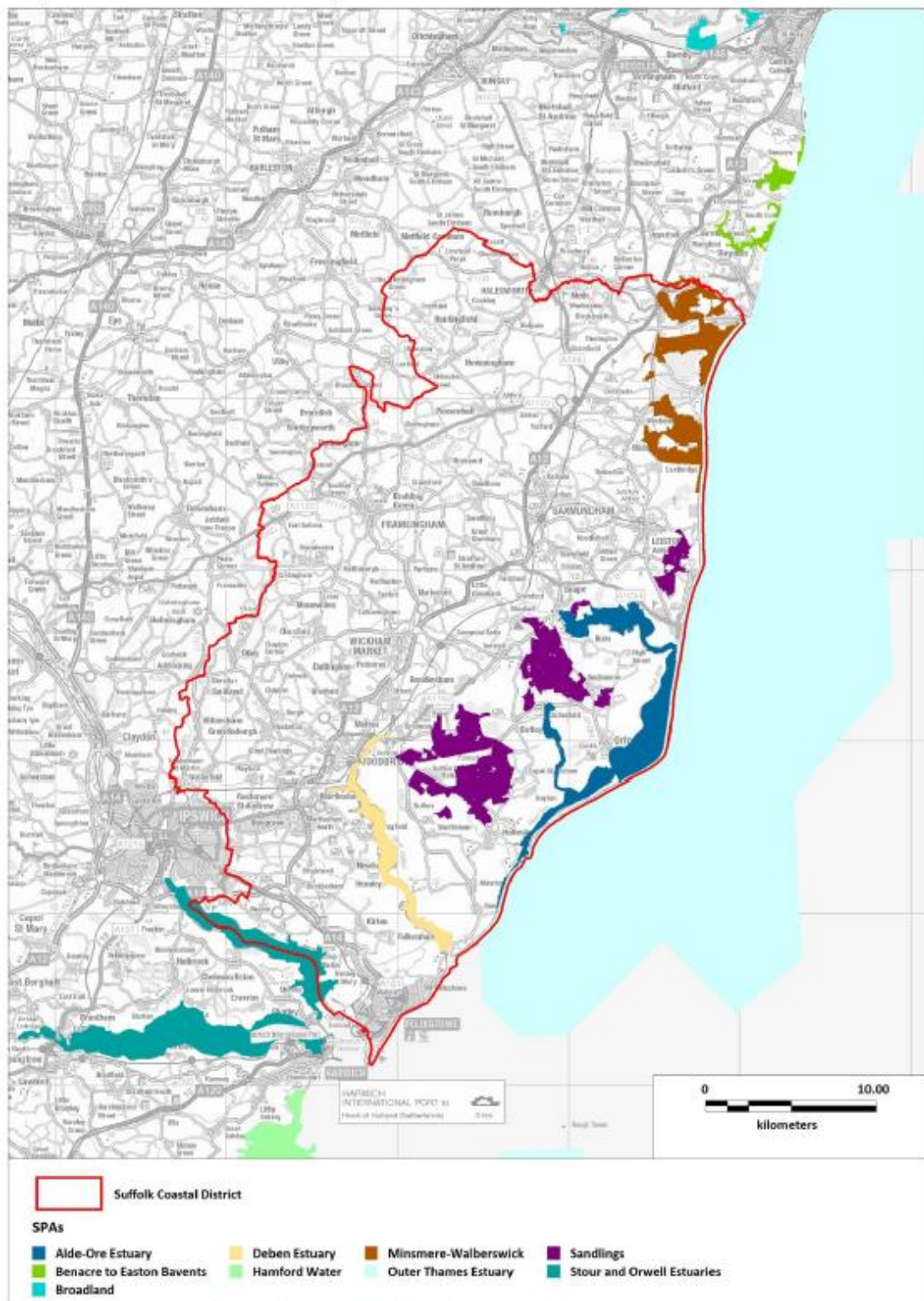
Habitat sites within 20km of the East Suffolk Council- Suffolk Coastal Local Plan Area

Map 1: SAC sites where boundary within 20km of Suffolk Coastal District



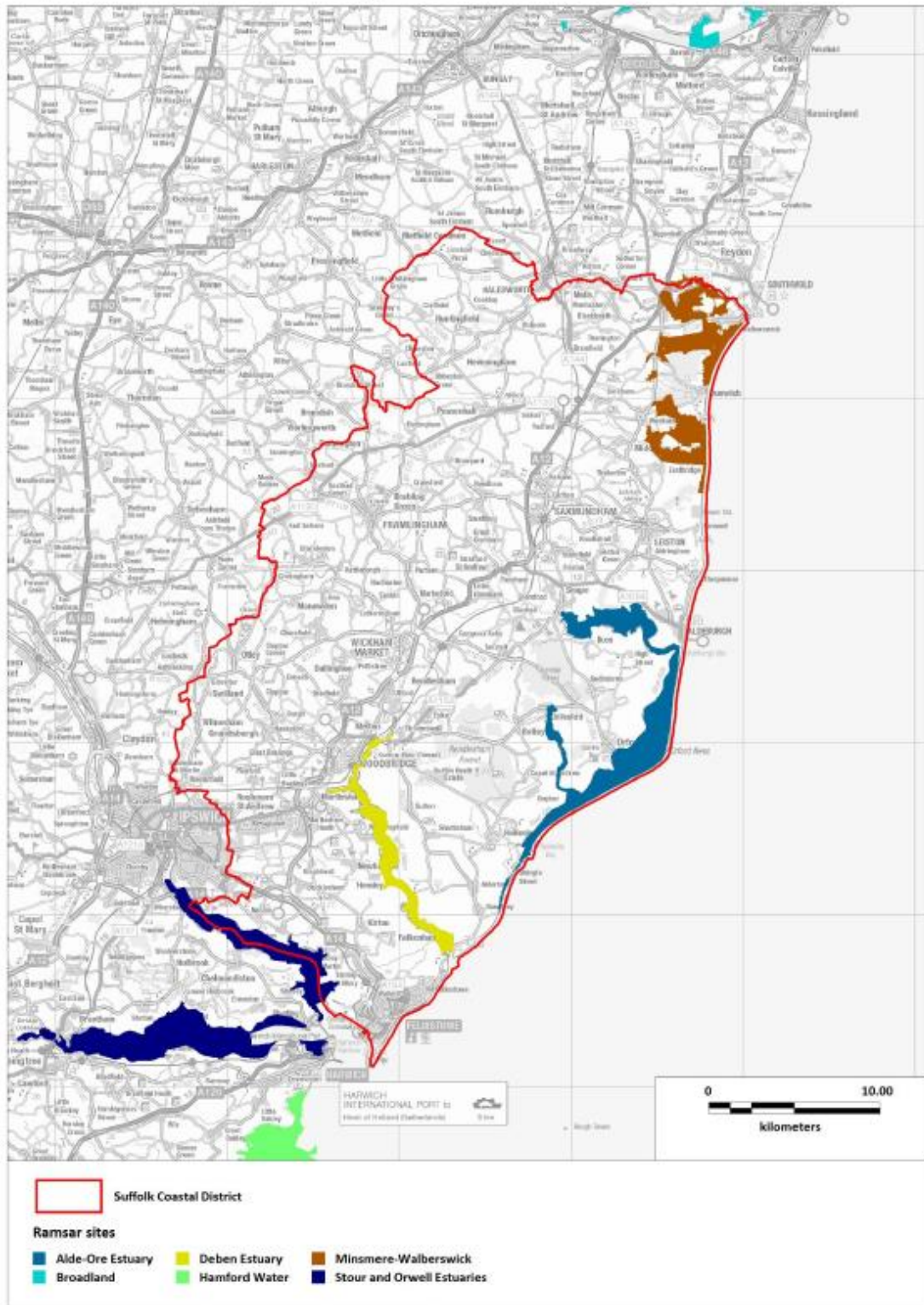
Contains Ordnance Survey Data. © Crown copyright and database right 2017.
 Contains Natural England information © Natural England and Database Right. All rights Reserved.

Map 2: SPA sites where boundary within 20km of Suffolk Coastal District



Contains Ordnance Survey Data. © Crown copyright and database right 2017.
 Contains Natural England Information © Natural England and Database Right. All rights Reserved.

Map 3: Ramsar sites where boundary within 20km of Suffolk Coastal District



Contains Ordnance Survey Data, © Crown copyright and database right 2017.
Contains Natural England Information © Natural England and Database Right. All rights Reserved.

Appendix 3: Relevant Habitat sites

Name	Qualifying features	Conservation Objectives	Pressure and threats (as summarised in the Habitats Regulations Assessment for the Suffolk Coastal Local Plan at Final Draft Plan Stage (December 2018))
Special Areas of Conservation			
Alde-Ore and Butley Estuaries	H1130:Estuaries H1140: Mudflats and sandflats not covered by seawater at low tide; Intertidal mudflats and sandflats H1330: Atlantic salt meadows	Ensure that the integrity of the site is maintained or restored as appropriate, and ensure that the site contributes to achieving the Favourable Conservation Status of its Qualifying Features by maintaining or restoring: The extent and distribution of qualifying natural habitats; The structure and function (including typical species) of qualifying natural habitats; The supporting processes on which qualifying natural habitats rely.	Hydrological changes, public access/disturbance, inappropriate coastal management, coastal squeeze, inappropriate pest control, changes in species distributions, invasive species, air pollution, fisheries (commercial marine and estuarine) (Alde-Ore and Butley Estuaries SAC and Alde-Ore SPA)
Benacre to Easton Barents Lagoons	H1150# Coastal lagoons, A195(B) <i>Sterna albifrons</i> : Little tern A021(B) <i>Botaurus stellaris</i> : Great bittern A081(B) <i>Circus aeruginosus</i> : Eurasian marsh harrier	Ensure that the integrity of the site is maintained or restored as appropriate, and ensure that the site contributes to achieving the Favourable Conservation Status of its Qualifying Features, by maintaining or restoring; The extent and distribution of qualifying natural habitats,	Public access/disturbance, water pollution, physical modification, changes in species distributions, fisheries (marine and estuarine).

		The structure and function (including typical species) of qualifying natural habitats, and, The supporting processes on which qualifying natural habitats rely.	
Dew's Ponds	S1166 Triturus cristatus: Great crested newt	Ensure that the integrity of the site is maintained or restored as appropriate, and ensure that the site contributes to achieving the Favourable Conservation Status of its Qualifying Features, by maintaining or restoring; The extent and distribution of the habitats of qualifying species, The structure and function of the habitats of qualifying species, The supporting processes on which the habitats of qualifying species rely, The populations of qualifying species, and, The distribution of qualifying species within the site.	None identified
Minsmere to Walberswick Heaths and Marshes	H4030 European dry heaths H1210 Annual vegetation of drift lines H1220 Perennial vegetation of stony banks A052(B) Anas crecca: Eurasian teal A021(B) Botaurus stellaris: Great bittern A081(B) Circus aeruginosus: Eurasian marsh harrier	Ensure that the integrity of the site is maintained or restored as appropriate, and ensure that the site contributes to achieving the Favourable Conservation Status of its Qualifying Features, by maintaining or restoring; The extent and distribution of qualifying natural habitats and habitats,	Coastal squeeze, public access/disturbance, changes in species distributions, invasive species, inappropriate pest control, air pollution, water pollution, deer, fisheries (commercial marine and estuarine)

	<p>A082(NB) Circus cyaneus: Hen harrier A224(B) Caprimulgus europaeus: European nightjar A056(B) Anas clypeata: Northern shoveler A056(NB) Anas clypeata: Northern shoveler A051(B) Anas strepera: Gadwall A051(NB) Anas strepera: Gadwall A132(B) Recurvirostra avosetta: Pied avocet A195(B) Sterna albifrons: Little tern A394(NB) Anser albifrons albifrons: Greater white-fronted goose</p>	<p>The structure and function (including typical species) of qualifying natural habitats, and, The supporting processes on which qualifying natural habitats rely.</p>	
<p>Orfordness – Shingle Street</p>	<p>H1150: Coastal Lagoons H1210: Annual vegetation of drift lines H1220: Perennial vegetation of stony banks; Coastal shingle vegetation outside the reach of waves</p>	<p>Ensure that the integrity of the site is maintained or restored as appropriate, and ensure that the site contributes to achieving the Favourable Conservation Status of its Qualifying Features by maintaining or restoring: The extent and distribution of qualifying natural habitats; The structure and function (including typical species) of qualifying natural habitats; and The supporting processes on which qualifying natural habitats rely.</p>	<p>Not identified in Suffolk Coastal Final Draft Local Plan HRA.</p>

<p>Staverton Park and The Thicks, Wantisden</p>	<p>H9190: Old acidophilous oak woods with <i>Quercus robur</i> on sandy plains; Dry oak-dominated woodland.</p>	<p>Ensure that the integrity of the site is maintained or restored as appropriate, and ensure that the site contributes to achieving the Favourable Conservation Status of its Qualifying Features by maintaining or restoring: The extent and distribution of qualifying natural habitats; The structure and function (including typical species) of qualifying natural habitats; and The supporting processes on which qualifying natural habitats rely.</p>	<p>Woodland management, disease, atmospheric pollution.</p>
<p>The Broads</p>	<p>H7210# Calcareous fens with <i>Cladium mariscus</i> and species of the <i>Caricion davallianae</i> S1016 <i>Vertigo moulinsiana</i>: Desmoulin's whorl snail H7230 Alkaline fens H6410 <i>Molinia</i> meadows on calcareous, peaty or clayey-silt-laden soils (<i>Molinion caeruleae</i>) H91E0# Alluvial forests with <i>Alnus glutinosa</i> and <i>Fraxinus excelsior</i> (<i>Alno-Padion</i>, <i>Alnion incanae</i>, <i>Salicion albae</i>) H7140 Transition mires and quaking bogs</p>	<p>Ensure that the integrity of the site is maintained or restored as appropriate, and ensure that the site contributes to achieving the Favourable Conservation Status of its Qualifying Features, by maintaining or restoring; The extent and distribution of qualifying natural habitats and habitats of qualifying species, The structure and function (including typical species) of qualifying natural habitats, The structure and function of the habitats of qualifying species, The supporting processes on which qualifying natural habitats and the habitats of qualifying species rely,</p>	<p>Water pollution, climate change, invasive species, siltation, inappropriate water levels, hydrological changes, water abstraction, change in land management, inappropriate ditch management, inappropriate scrub control, changes in species distributions, public access/disturbance, undergrazing, drainage, direct impact from 3rd party</p>

	<p>H3140 Hard oligo-mesotrophic waters with benthic vegetation of Chara spp</p> <p>H3150 Natural eutrophic lakes with Magnopotamion or Hydrocharition-type vegetation</p> <p>S1355 Lutra lutra: Otter</p> <p>S1903 Liparis loeselii: Fen orchid</p> <p>S4056 Anisus vorticulus: Little ramshorn whirlpool snail</p>	<p>The populations of qualifying species, and, The distribution of qualifying species within the site.</p>	
Special Protection Areas			
<p>Alde-Ore Estuary (also Ramsar site)</p>	<p>A081: Eurasian marsh harrier (breeding)</p> <p>A132: Pied avocet (non-breeding)</p> <p>A132: Pied avocet (breeding)</p> <p>A151: Ruff (non-breeding)</p> <p>A162: Common redshank (non-breeding)</p> <p>A183: Lesser black-backed gull (breeding)</p> <p>A191: Sandwich tern (breeding)</p> <p>A195: Little tern (breeding)</p>	<p>Ensure that the integrity of the site is maintained or restored as appropriate, and ensure that the site contributes to achieving the aims of the Wild Birds Directive, by maintaining or restoring:</p> <p>The extent and distribution of the habitats of the qualifying features;</p> <p>The structure and function of the habitats of the qualifying features;</p> <p>The supporting processes on which the habitats of the qualifying features rely;</p> <p>The population of each of the qualifying features; and</p> <p>The distribution of the qualifying features within the site.</p>	<p>Hydrological changes, public access/disturbance, inappropriate coastal management, coastal squeeze, inappropriate pest control, changes in species distributions, invasive species, air pollution, fisheries (commercial marine and estuarine)</p> <p>(Alde-Ore and Butley Estuaries SAC and Alde-Ore SPA)</p>
<p>Benacre to Easton Bvents</p>	<p>H1150# Coastal lagoons, A195(B) Sterna albifrons: Little tern</p>	<p>Ensure that the integrity of the site is maintained or restored as appropriate, and ensure that the site contributes to</p>	<p>Public access/disturbance, water pollution, physical modification, changes</p>

	<p>A021(B) <i>Botaurus stellaris</i>: Great bittern A081(B) <i>Circus aeruginosus</i>: Eurasian marsh harrier</p>	<p>achieving the aims of the Wild Birds Directive, by maintaining or restoring; The extent and distribution of the habitats of the qualifying features, The structure and function of the habitats of the qualifying features, The supporting processes on which the habitats of the qualifying features rely, The population of each of the qualifying features, and, The distribution of the qualifying features within the site.</p>	<p>in species distributions, fisheries (marine and estuarine).</p>
<p>Broadlands (also Ramsar site)</p>	<p>H7210# Calcareous fens with <i>Cladium mariscus</i> and species of the <i>Caricion davallianae</i> S1016 <i>Vertigo moulinsiana</i>: Desmoulin's whorl snail H7230 Alkaline fens H6410 <i>Molinia</i> meadows on calcareous, peaty or clayey-silt-laden soils (<i>Molinion caeruleae</i>) H91E0# Alluvial forests with <i>Alnus glutinosa</i> and <i>Fraxinus excelsior</i> (<i>Alno-Padion</i>, <i>Alnion incanae</i>, <i>Salicion albae</i>) H7140 Transition mires and quaking bogs H3140 Hard oligo-mesotrophic waters with benthic vegetation of <i>Chara</i> spp</p>	<p>Ensure that the integrity of the site is maintained or restored as appropriate, and ensure that the site contributes to achieving the Favourable Conservation Status of its Qualifying Features, by maintaining or restoring; The extent and distribution of qualifying natural habitats and habitats of qualifying species, The structure and function (including typical species) of qualifying natural habitats, The structure and function of the habitats of qualifying species, The supporting processes on which qualifying natural habitats and the habitats of qualifying species rely, The populations of qualifying species, and,</p>	<p>Water pollution, climate change, invasive species, siltation, inappropriate water levels, hydrological changes, water abstraction, change in land management, inappropriate ditch management, inappropriate scrub control, changes in species distributions, public access/disturbance, undergrazing, drainage, direct impact from 3rd party</p>

	H3150 Natural eutrophic lakes with Magnopotamion or Hydrocharition-type vegetation S1355 Lutra lutra: Otter S1903 Liparis loeselii: Fen orchid S4056 Anisus vorticulus: Little ramshorn whirlpool snail	The distribution of qualifying species within the site.	
Deben Estuary (also Ramsar site)	A046a: Dark bellied brent goose (non-breeding) A132: Pied avocet (non-breeding)	Ensure that the integrity of the site is maintained or restored as appropriate, and ensure that the site contributes to achieving the aims of the Wild Birds Directive, by maintaining or restoring: The extent and distribution of the habitats of the qualifying features; The structure and function of the habitats of the qualifying features; The supporting processes on which the habitats of the qualifying features rely; The population of each of the qualifying features; and The distribution of the qualifying features within the site.	Coastal squeeze, disturbance to birds, water and air pollution.
Outer Thames Estuary	A001: Red-throated Diver (Non-breeding) A195: Common Tern (Breeding) A193: Little Tern (Breeding)	Ensure that the integrity of the site is maintained or restored as appropriate, and ensure that the site contributes to achieving the aims of the Wild Birds Directive, by maintaining or restoring: The extent and distribution of the habitats of the qualifying features;	Not identified in Suffolk Coastal Final Draft Local Plan HRA. SIP identifies fisheries.

		<p>The structure and function of the habitats of the qualifying features; The supporting processes on which the habitats of the qualifying features rely; The population of each of the qualifying features; and The distribution of the qualifying features within the site.</p>	
<p>Minsmere to Walberswick (also Ramsar site)</p>	<p>H4030 European dry heaths H1210 Annual vegetation of drift lines H1220 Perennial vegetation of stony banks A052(B) Anas crecca: Eurasian teal A021(B) Botaurus stellaris: Great bittern A081(B) Circus aeruginosus: Eurasian marsh harrier A082(NB) Circus cyaneus: Hen harrier A224(B) Caprimulgus europaeus: European nightjar A056(B) Anas clypeata: Northern shoveler A056(NB) Anas clypeata: Northern shoveler A051(B) Anas strepera: Gadwall A051(NB) Anas strepera: Gadwall</p>	<p>Ensure that the integrity of the site is maintained or restored as appropriate, and ensure that the site contributes to achieving the aims of the Wild Birds Directive, by maintaining or restoring; The extent and distribution of the habitats of the qualifying features, The structure and function of the habitats of the qualifying features, The supporting processes on which the habitats of the qualifying features rely, The population of each of the qualifying features, and, The distribution of the qualifying features within the site.</p>	<p>Coastal squeeze, public access/disturbance, changes in species distributions, invasive species, inappropriate pest control, air pollution, water pollution, deer, fisheries (commercial marine and estuarine)</p>

	<p>A132(B) <i>Recurvirostra avosetta</i>: Pied avocet A195(B) <i>Sterna albifrons</i>: Little tern A394(NB) <i>Anser albifrons albifrons</i>: Greater white-fronted goose</p>		
Outer Thames Estuary	<p>A001 (W) <i>Gavia stellata</i> Red-throated Diver A195 (B) <i>Sterna hirundo</i> Common Tern A193 (B) <i>Sternula albifrons</i> Little Tern</p>	<p>Ensure that the integrity of the site is maintained or restored as appropriate, and ensure that the site contributes to achieving the aims of the Wild Birds Directive, by maintaining or restoring; The extent and distribution of the habitats of the qualifying features, The structure and function of the habitats of the qualifying features, The supporting processes on which the habitats of the qualifying features rely, The population of each of the qualifying features, and, The distribution of the qualifying features within the site.</p>	<p>Not identified in Suffolk Coastal Final Draft Local Plan HRA. SIP identifies fisheries.</p>
Sandlings	<p>A224: European nightjar (breeding) A246: Woodlark (breeding)</p>	<p>Ensure that the integrity of the site is maintained or restored as appropriate, and ensure that the site contributes to achieving the aims of the Wild Birds Directive, by maintaining or restoring: The extent and distribution of the habitats of the qualifying features;</p>	<p>Changes in species distributions, inappropriate scrub control, deer, air pollution, public access/disturbance.</p>

		<p>The structure and function of the habitats of the qualifying features; The supporting processes on which the habitats of the qualifying features rely; The population of each of the qualifying features; and The distribution of the qualifying features within the site.</p>	
<p>Stour and Orwell Estuaries (also Ramsar site)</p>	<p>A046a: Dark bellied brent goose (non-breeding) A054: Northern pintail (non-breeding) A132: Pied avocet (non-breeding) A141: Grey plover (non-breeding) A143: Red knot (non-breeding) A149: Dunlin (non-breeding) A156: Black-tailed godwit (non-breeding) A162: Common redshank (non-breeding) Waterbird assemblage</p>	<p>Ensure that the integrity of the site is maintained or restored as appropriate, and ensure that the site contributes to achieving the aims of the Wild Birds Directive, by maintaining or restoring: The extent and distribution of the habitats of the qualifying features; The structure and function of the habitats of the qualifying features; The supporting processes on which the habitats of the qualifying features rely; The population of each of the qualifying features; and The distribution of the qualifying features within the site.</p>	<p>Coastal squeeze, disturbance to birds, air pollution and new development.</p>

Appendix 4: Natural England Consultation Response

East Suffolk Council - Rural Development Supplementary Planning Document: SEA & HR...



SM-NE-Consultations (NE)

To Laura Mundy



Reply

Reply All

Forward



Thu 10/08/2023 16:15

Follow up. Start by 25 August 2023. Due by 25 August 2023.

Dear Laura Mundy,

Our ref: 444620

East Suffolk Council - Rural Development Supplementary Planning Document: SEA & HRA Screening Consultation

Thank you for your consultation on the above dated 3 August 2023.

Natural England is a non-departmental public body. Our statutory purpose is to ensure that the natural environment is conserved, enhanced, and managed for the benefit of present and future generations, thereby contributing to sustainable development.

Natural England is not able to provide specific advice on this document and therefore has no comment to make on its details.

The lack of comment from Natural England should not be interpreted as a statement that there are no impacts on the natural environment. Other bodies and individuals may wish to make comments that might help the Local Planning Authority (LPA) to fully take account of any environmental risks and opportunities relating to this document.

Should the proposal be amended in a way which significantly affects its impact on the natural environment, then in accordance with Section 4 of the Natural Environment and Rural Communities Act 2006, please consult Natural England again.

Yours sincerely,

Dominic Rogers
Consultations Team
Natural England
Hornbeam House, Electra Way
Crewe, Cheshire, CW1 6GJ

Enquiries line:

Email:

www.gov.uk/natural-england

