

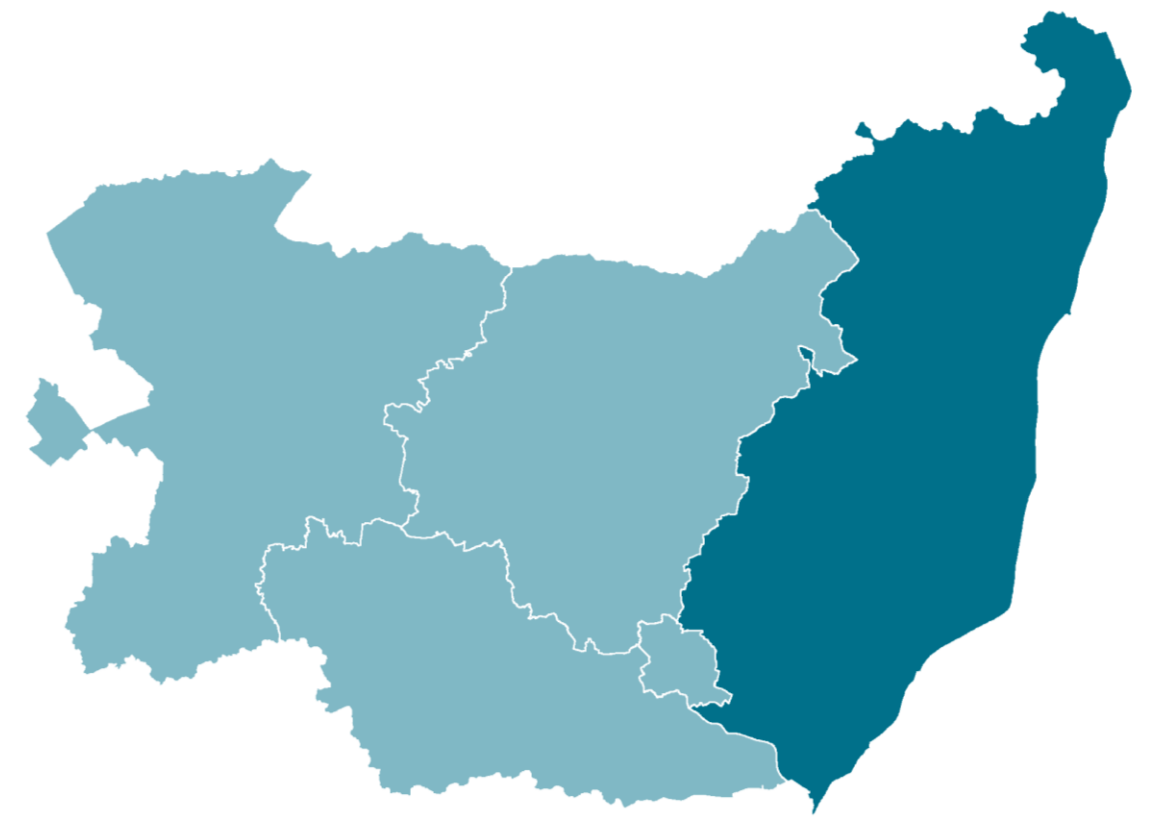


# East Suffolk Profile May 2024

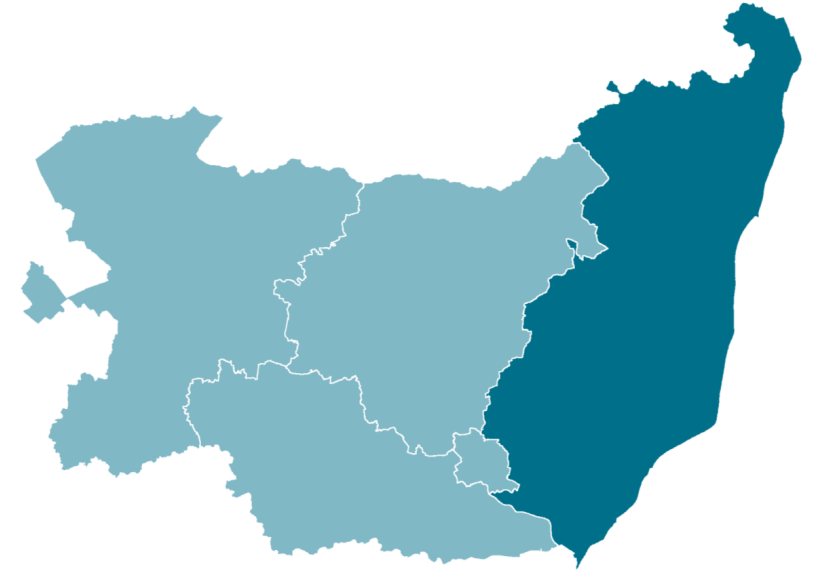
---



East Suffolk  
Community  
Partnerships  
*Bringing ideas to life*



# Population



East Suffolk  
Community  
Partnerships

*Bringing ideas to life*

# Population

## Key facts



Total population

**246,058**



Largest age group

**70-74**



Smallest age group

**80-84**

**94%**

of East Suffolk residents  
were born in the UK



There are **68,309**  
people aged over 65 in  
East Suffolk



**3,766**  
people aged 90 or  
over

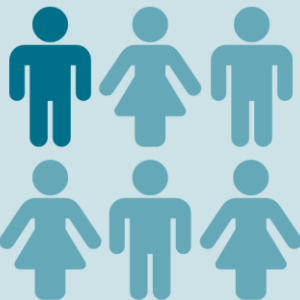
# Population

## Key facts



More than **1 in 4**  
people are aged 65+

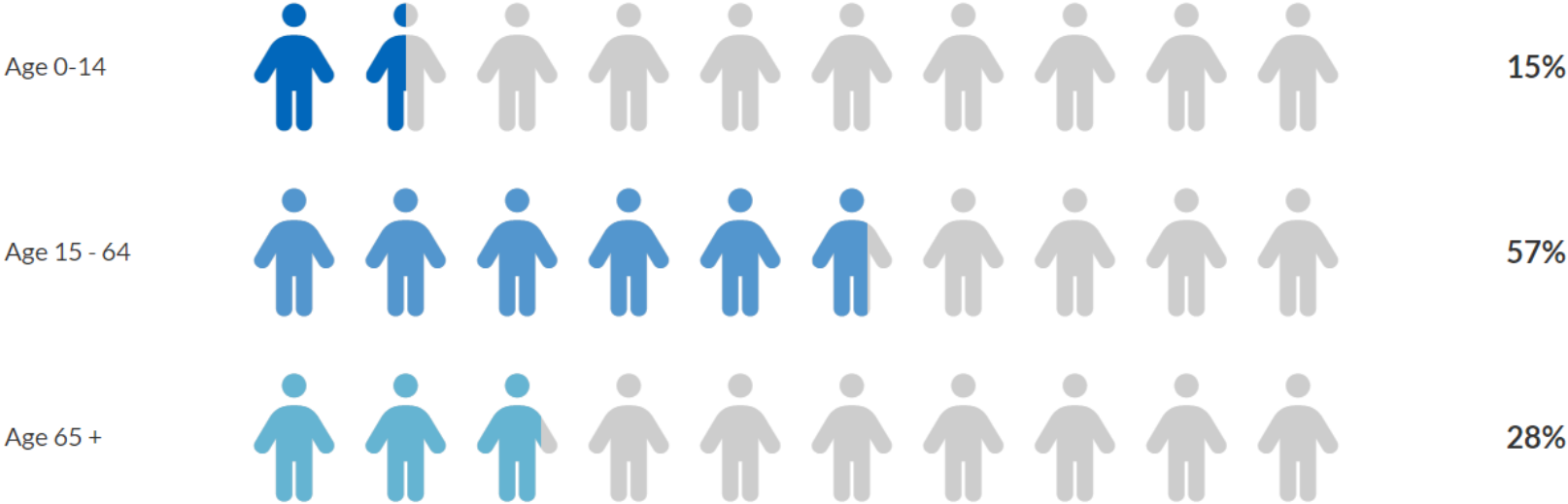
27.8%; national average 18.4%



Just over  
**1 in 6**  
are aged 16 and  
under

16.0% v national average 18.6%

Population by broad age group for East Suffolk (2021)



Source: ONS 2020 mid-year population estimates

# Population Age breakdown

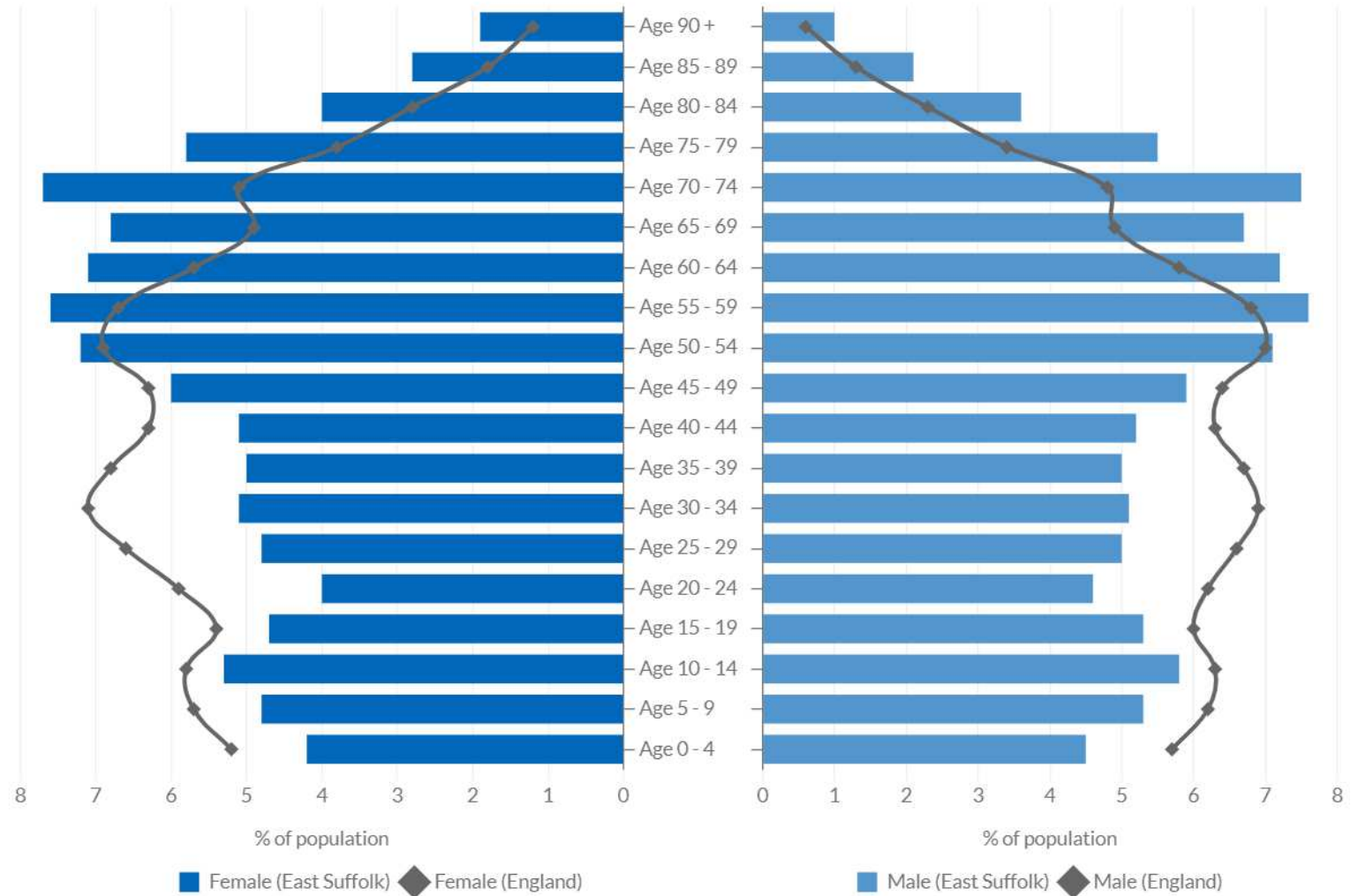
The age pyramid shows the age breakdown of the population of East Suffolk against the national average

Most over-represented age group: **85+**

Most under-represented age group: **25-29**

All groups below the age of 50 account for a smaller proportion of the East Suffolk population than they do across England as a whole

Percentage of population by 5-year age groups (2021)



Source: ONS, Census 2021



29,770

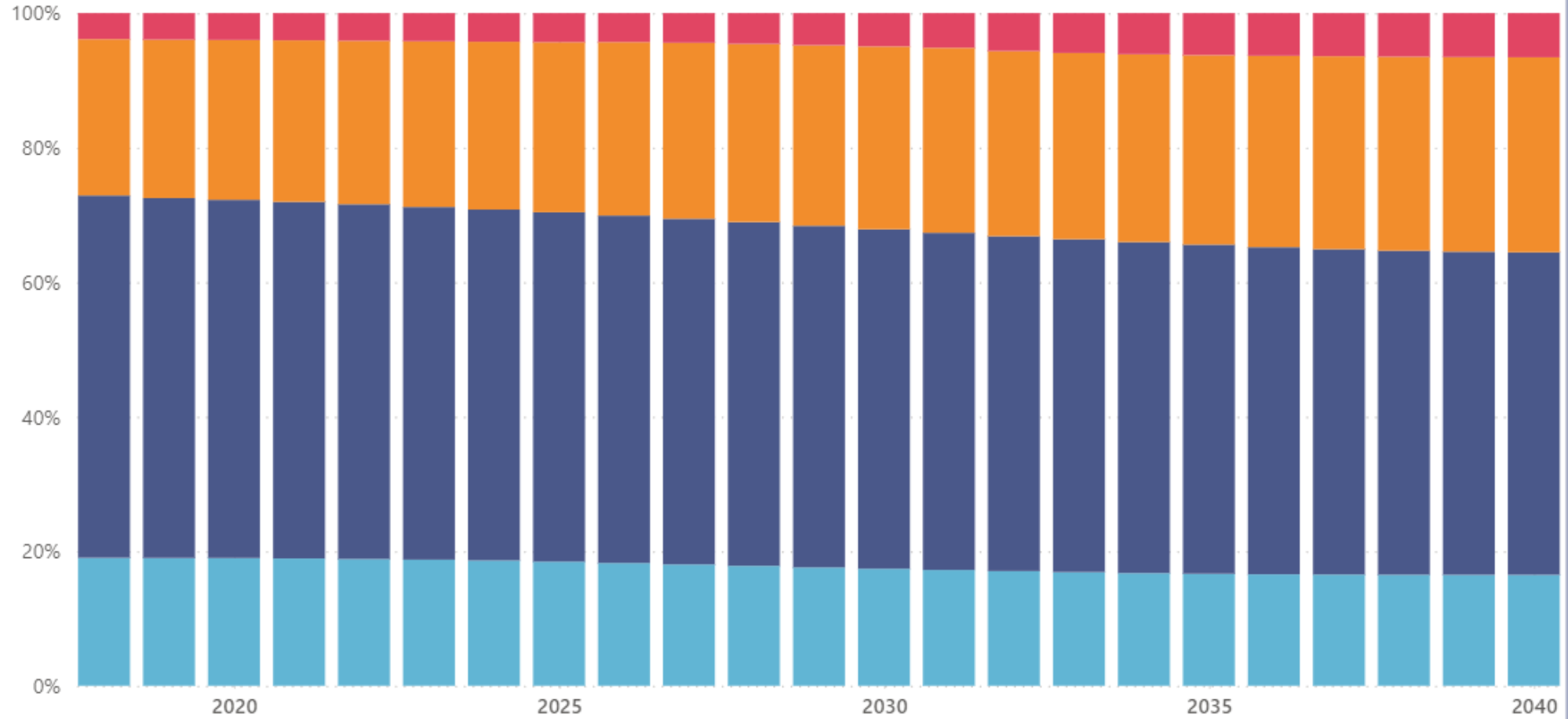
Projected population change over selected period

12.0%

Percentage projected population change over selected period

### Projected proportion of population by Broad Age Group

Broad age group ● Under 18 ● 18 to 64 ● 65 to 84 ● 85+



2018

2040

Enter years from 2018 to 2043

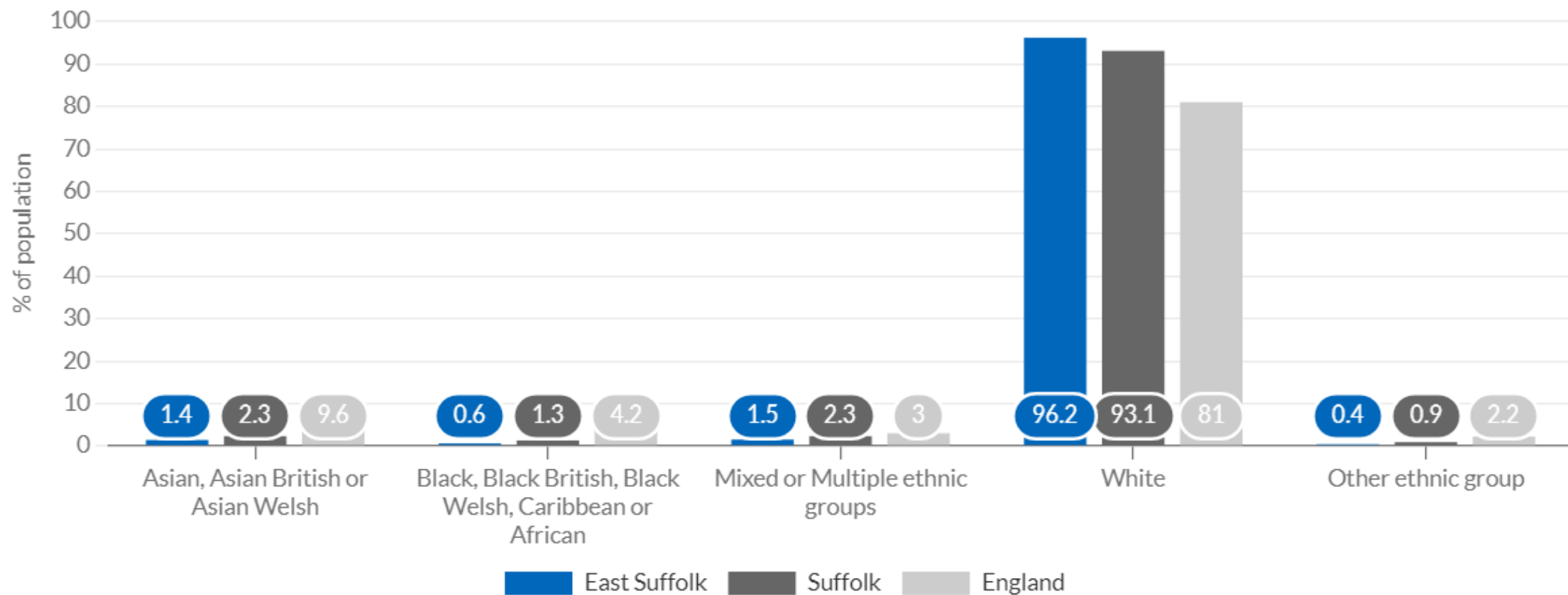
Projection to 2030

Projection to 2040

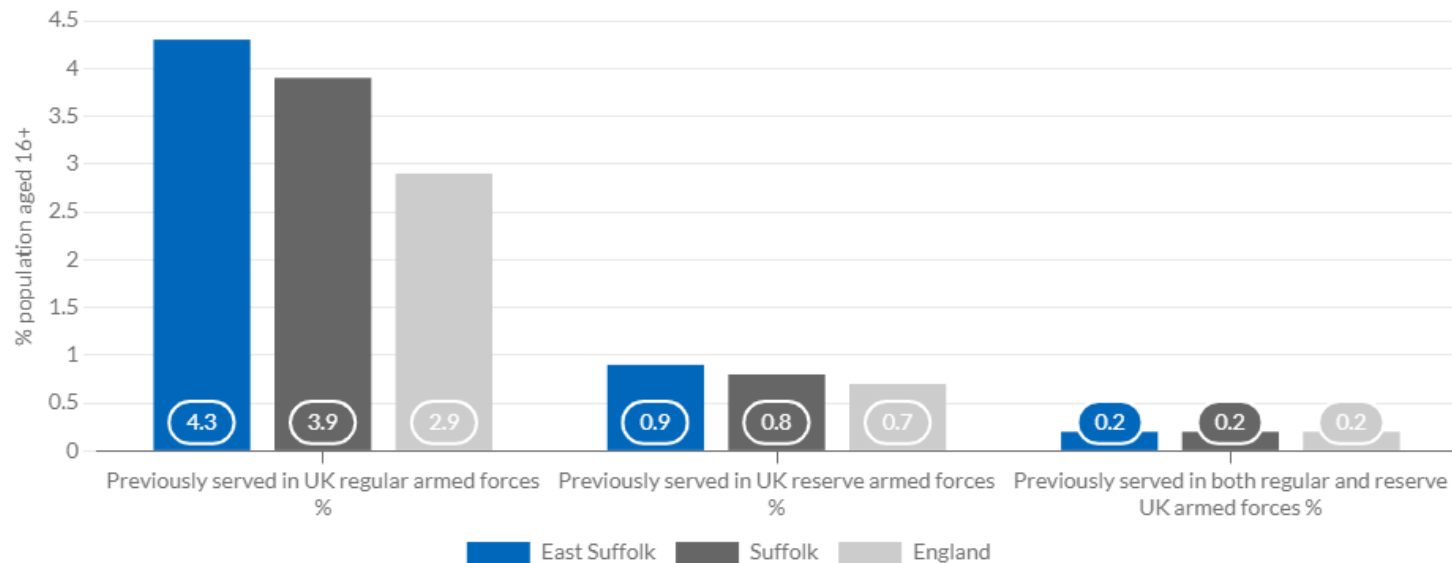
## Ethnicity

This section displays census data about the number and percentage of people from each ethnic group. The way people describe their ethnic group is based on their culture, family background, identity or physical appearance.

### Broad ethnic groups (2021)



### Previously served in UK armed forces (2021)



Source: ONS, Census 2021

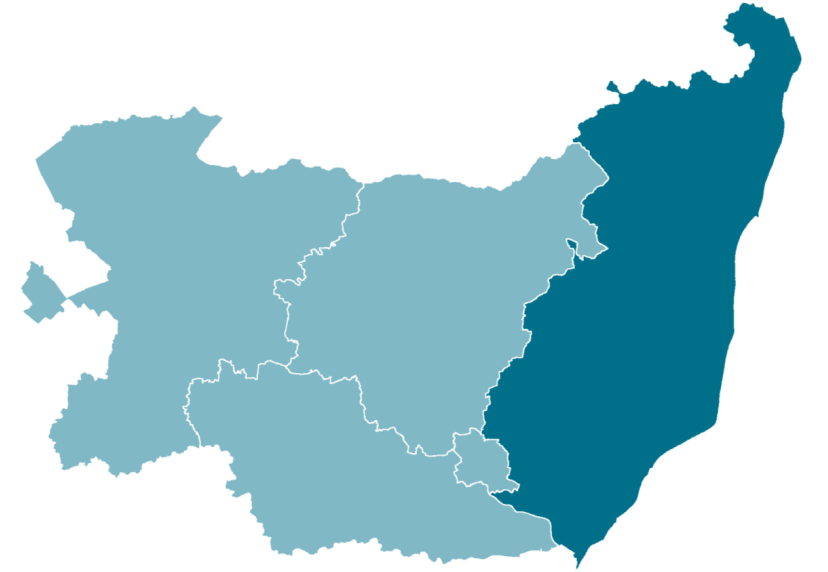


	East Suffolk	Suffolk	England
Previously served in UK regular armed forces	8,918	24,371	1,325,353
Previously served in UK regular armed forces (%)	4.3	3.9	2.9
Previously served in UK reserve armed forces	1,864	5,202	338,520
Previously served in UK reserve armed forces (%)	0.9	0.8	0.7
Previously served in both regular and reserve UK armed forces	510	1,403	73,908
Previously served in both regular and reserve UK armed forces (%)	0.2	0.2	0.2
Has not previously served in any UK armed forces	195,425	599,386	44,269,176
Has not previously served in any UK armed forces (%)	94.5	95.1	96.2

Date: 2021 | Source: ONS, Census 2021



# Deprivation

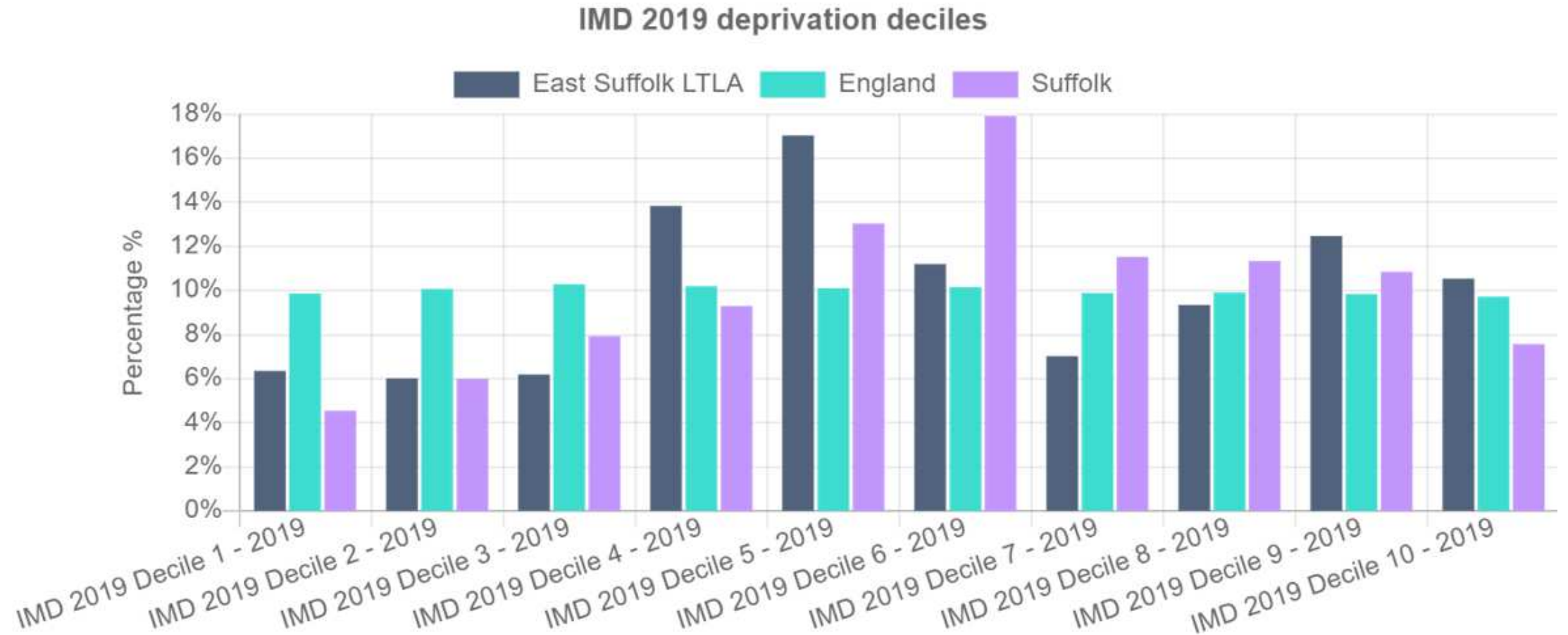


East Suffolk  
Community  
Partnerships

*Bringing ideas to life*

# Deprivation in East Suffolk

Proportion of people in each deprivation decile



Source: Ministry of Housing Communities and Local Government (MHCLG) 2019

# Deprivation

## Key facts



**15,270**

people affected by  
income deprivation

11.5%

Suffolk average 10.1%



**9.9%**

of working age  
people affected by  
employment  
deprivation

Suffolk average 8.3%  
13,630 people



**6,350**

children affected by  
income deprivation

15.2%

Suffolk average 13.6%



**9,160**

older people affected  
by income deprivation

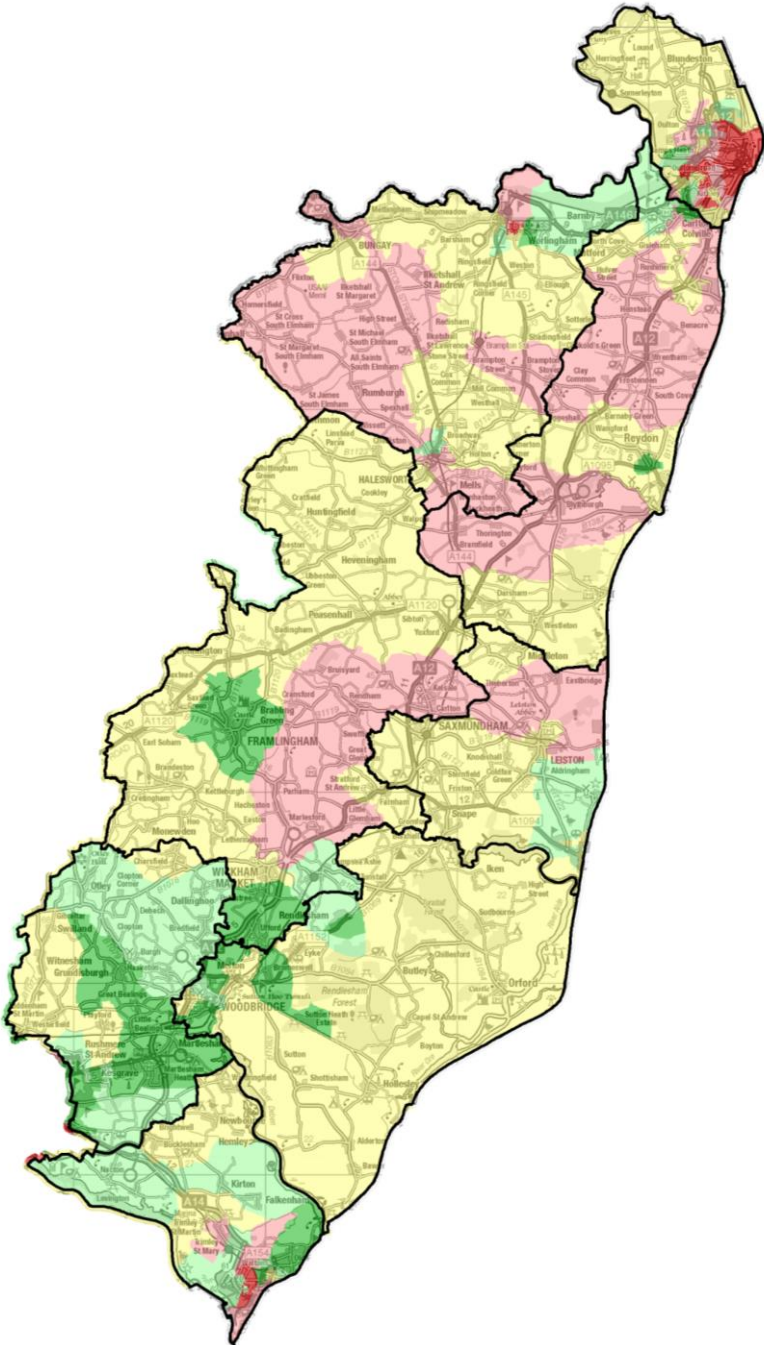
10.5%

Suffolk average 10.2%

# Deprivation Overall

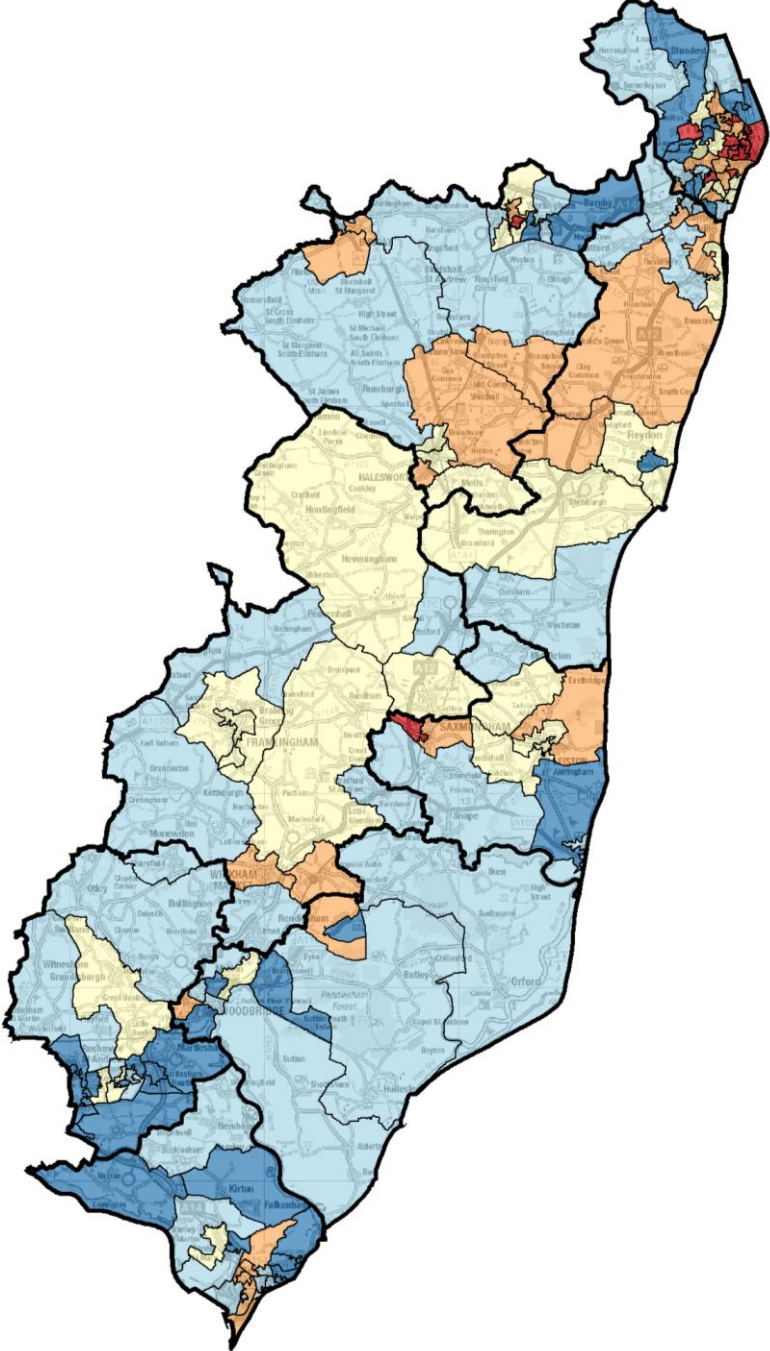
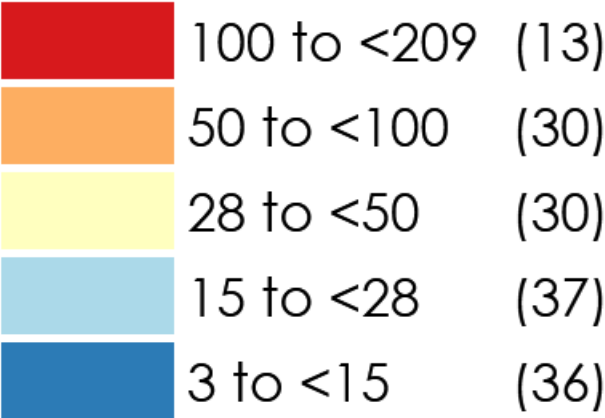
IMD quintile	Population	% of population	
1	30,032	12.2%	(12%)
2	51,048	20.7%	(20%)
3	71,205	28.8%	(29%)
4	38,992	15.8%	(16%)
5	55,803	22.6%	(23%)

1 = most deprived 20% of areas in England  
 5 = least deprived 20% of areas in England



# Deprivation Children

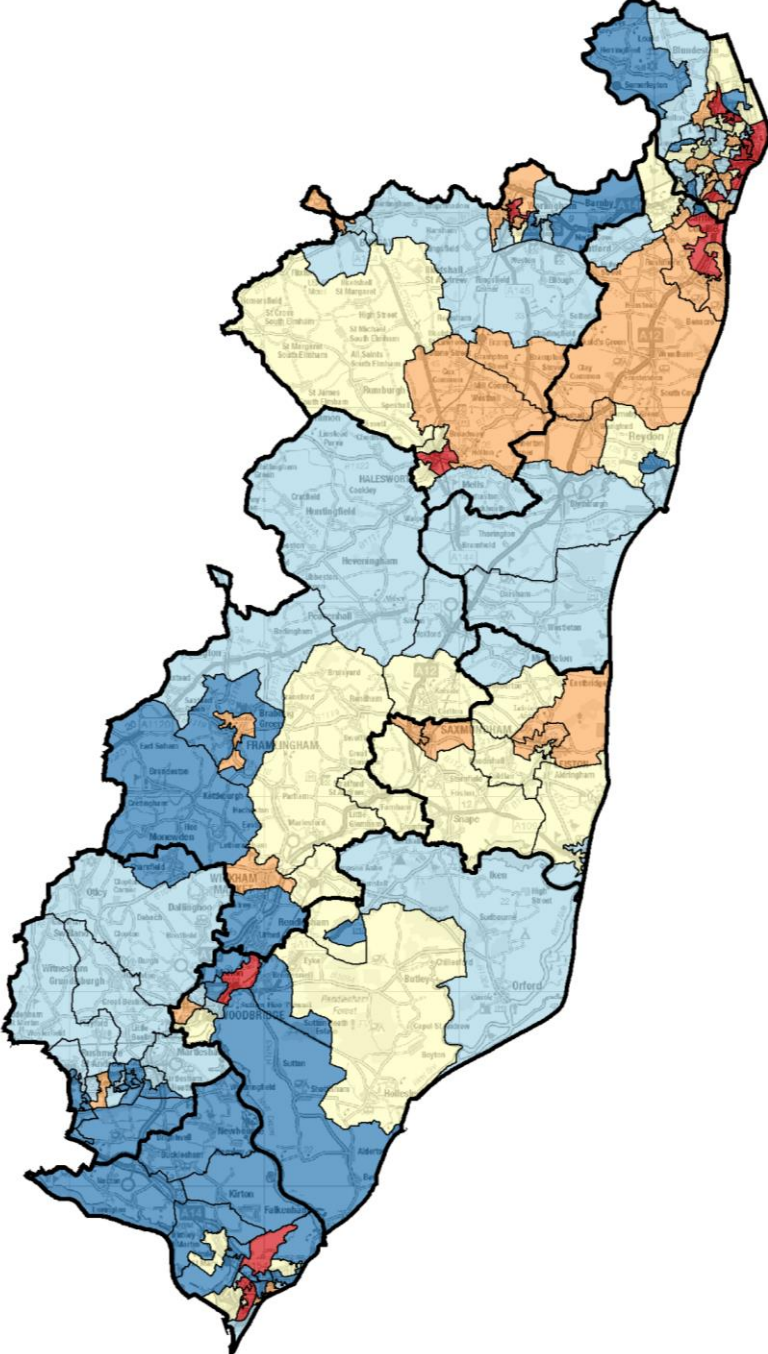
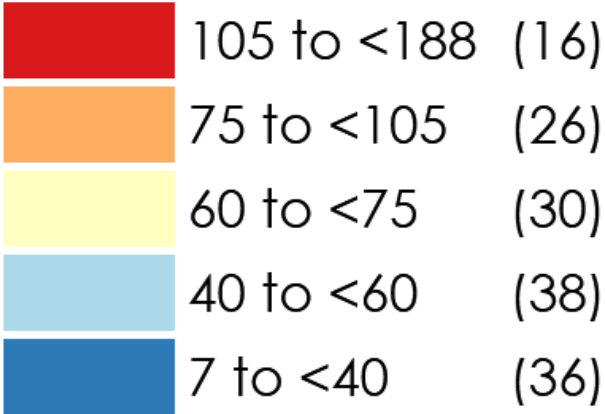
## Children aged 0-15 income deprived



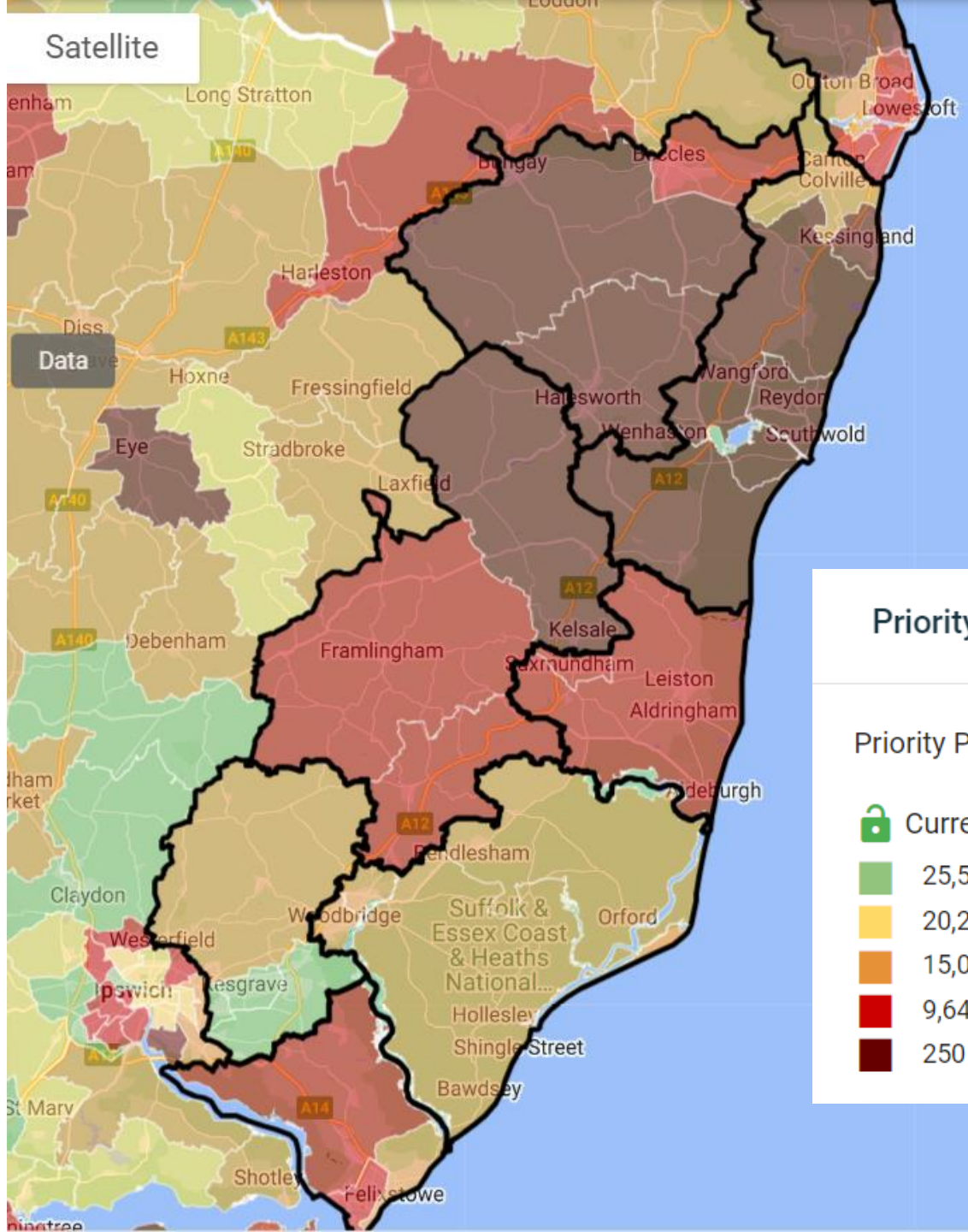


# Deprivation Older people

## Older people aged 60+ income deprived









Satellite



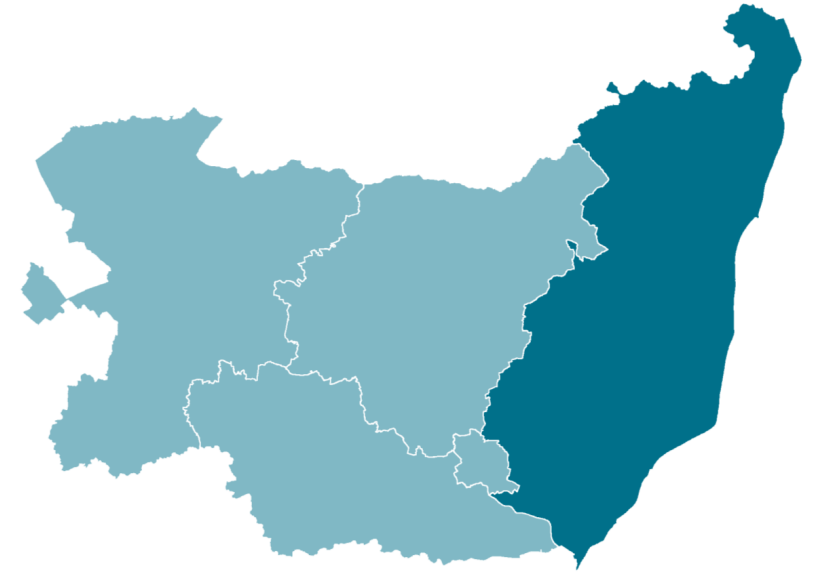
## Priority Places for Food Index (Rank)



Priority Places for Food Index Rank (1=highest priority)

-  Current Level: **Electoral Wards/Divisions**
-  25,507 - 33,710
-  20,266 - 25,507
-  15,053 - 20,261
-  9,645 - 15,046
-  250 - 9,645

# Health and Wellbeing



East Suffolk  
Community  
Partnerships

*Bringing ideas to life*



# Health and social care

## Life expectancy

**East Suffolk**  
**Suffolk**  
**England**

	Life expectancy at birth for males	Life expectancy at birth for females
East Suffolk	79.9	83.5
Suffolk	80.3	83.9
England	78.9	82.8

### Highest and lowest life expectancy in East Suffolk

Melton Ward (Melton, Woodbridge & Deben Peninsula CP)	84.5	90.0
Carlford & Fynn Valley (Kesgrave & Martlesham CP)		
Harbour & Normanston Ward (Lowestoff and NP CP)	75.1	79.9



**9.3 years**

the gap in life expectancy for males between Melton Ward/Carlford & Fynn Valley Ward and Harbour & Normanston Ward



**10.1 years**

the gap in life expectancy for females between Melton Ward and Harbour & Normanston Ward

- The top 5 drivers of the life expectancy gap between our most and least deprived communities are circulatory disease, cancer, respiratory, COVID-19 and external causes (RTA's, poisoning, suicide, injuries)
- Circulatory conditions make the largest contribution to the gap in men, and the second largest for women, while cancer makes the largest contribution in women and the second largest in men.
- The risk factors that drive the most death and disability are tobacco (by far the biggest individual causal risk factor), diabetes, high BMI, dietary risks, high blood pressure, alcohol use and high LDL (bad cholesterol).
- These risk factors are “modifiable”, meaning we can do something about them
- Action to tackle these risks will prevent people developing these conditions and reduce health inequalities.

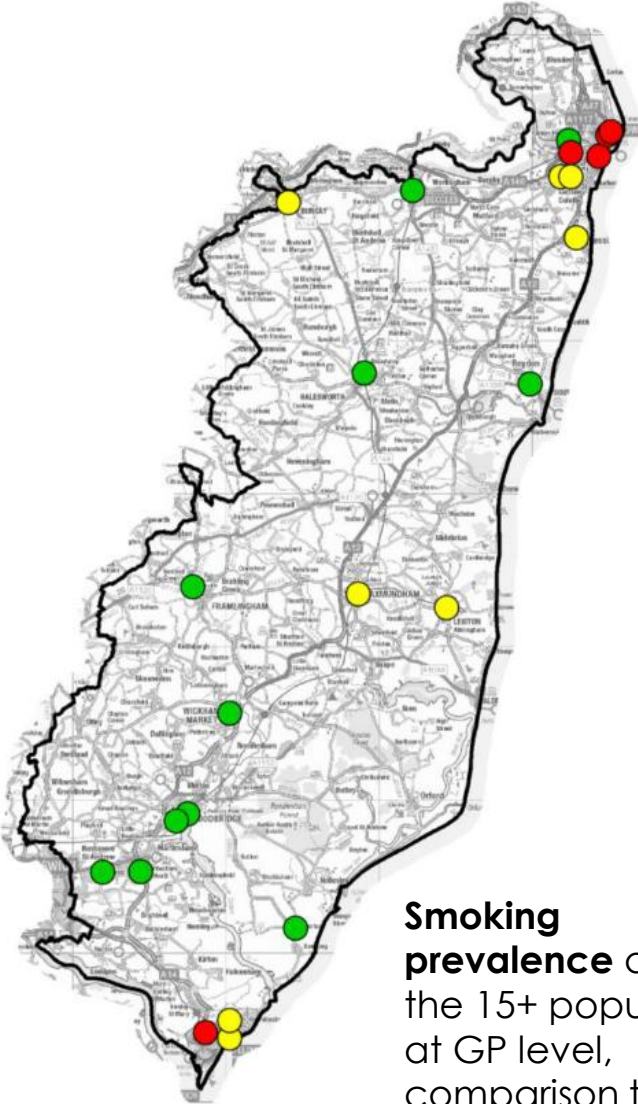
	Preventable Diseases Causing Highest Health Care Demand					
Risk Factor	Cardiovascular Disease	Diabetes	Respiratory	Frailty	Dementia	Falls
Smoking						
Alcohol						
Healthy Weight						
Physical Activity						
Isolation and Loneliness						
Support for Carers						
Blood Pressure						
AF Control						
Diabetes Control						

# Health and social care

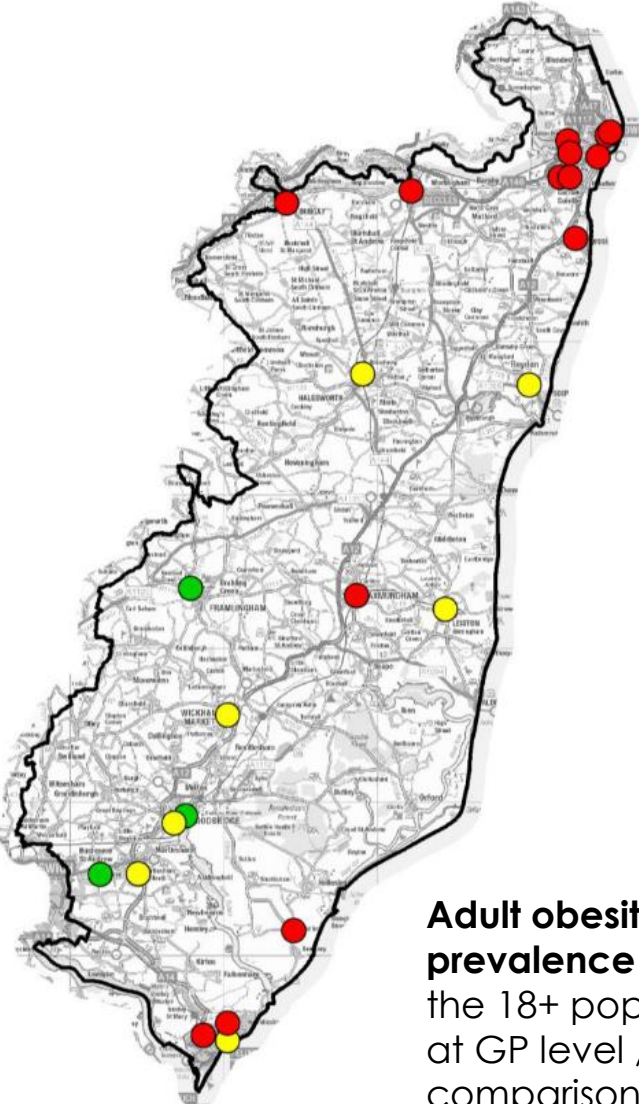
## Smoking, obesity & mental ill-health

### Compared to England...

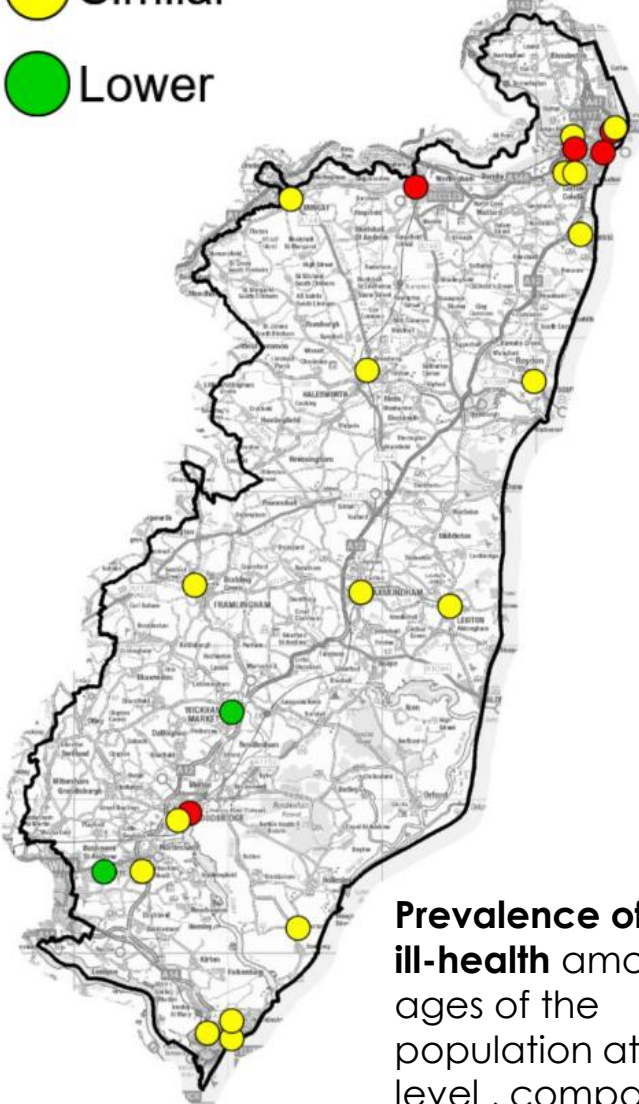
- Higher
- Similar
- Lower



**Smoking prevalence** among the 15+ population at GP level, comparison to England



**Adult obesity prevalence** among the 18+ population at GP level, comparison to England



**Prevalence of mental ill-health** among all ages of the population at GP level, comparison to England

Source: OHID Fingertips



# Health and social care

## Childhood weight



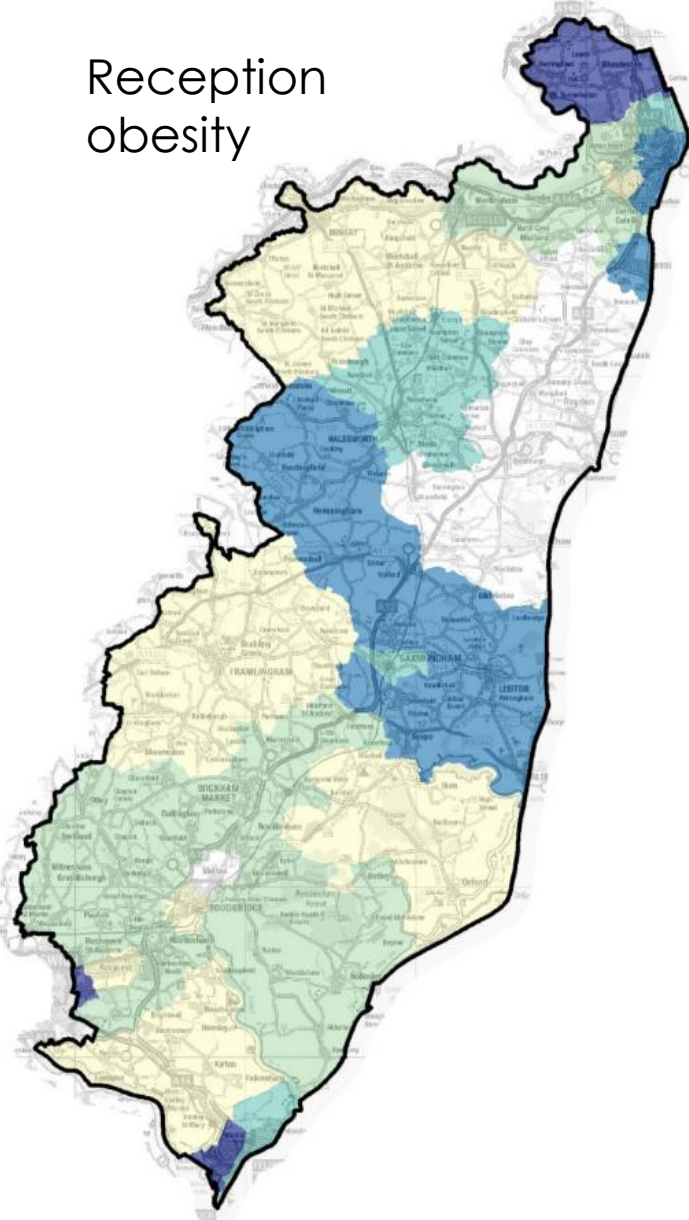
Reception  
year pupils  
obese



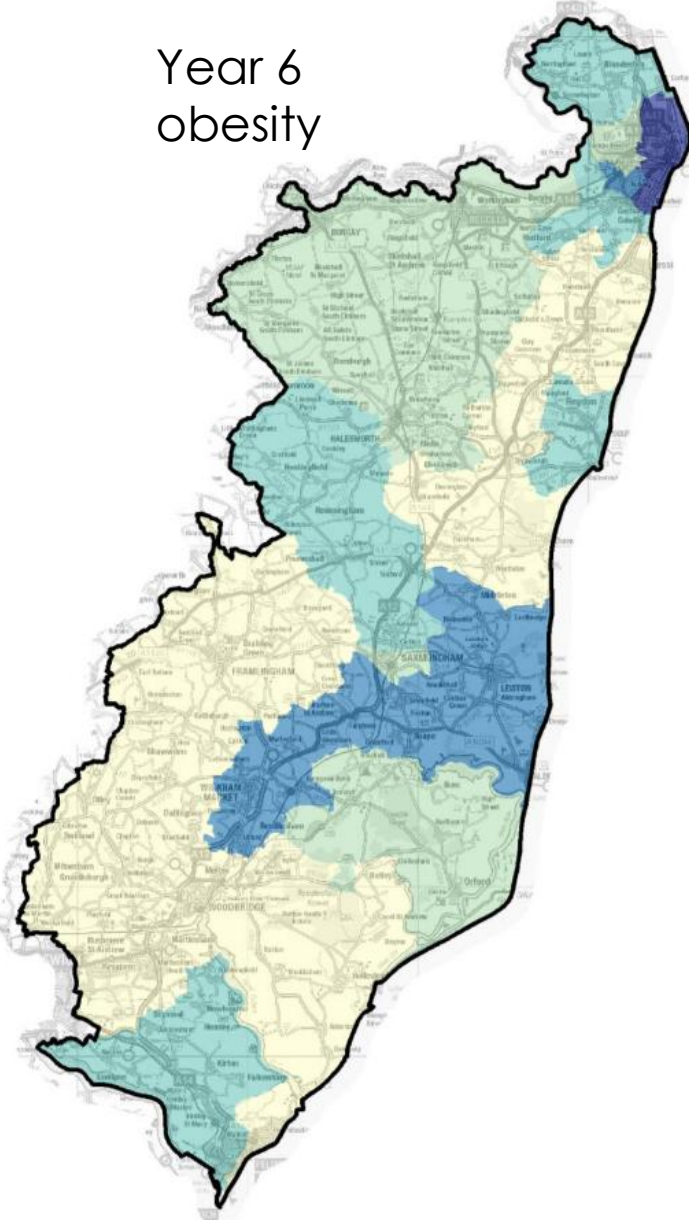
Year 6  
pupils  
obese

The maps show the percentage of children measured as obese according to the National Child Measurement Programme (NCMP)

Reception  
obesity

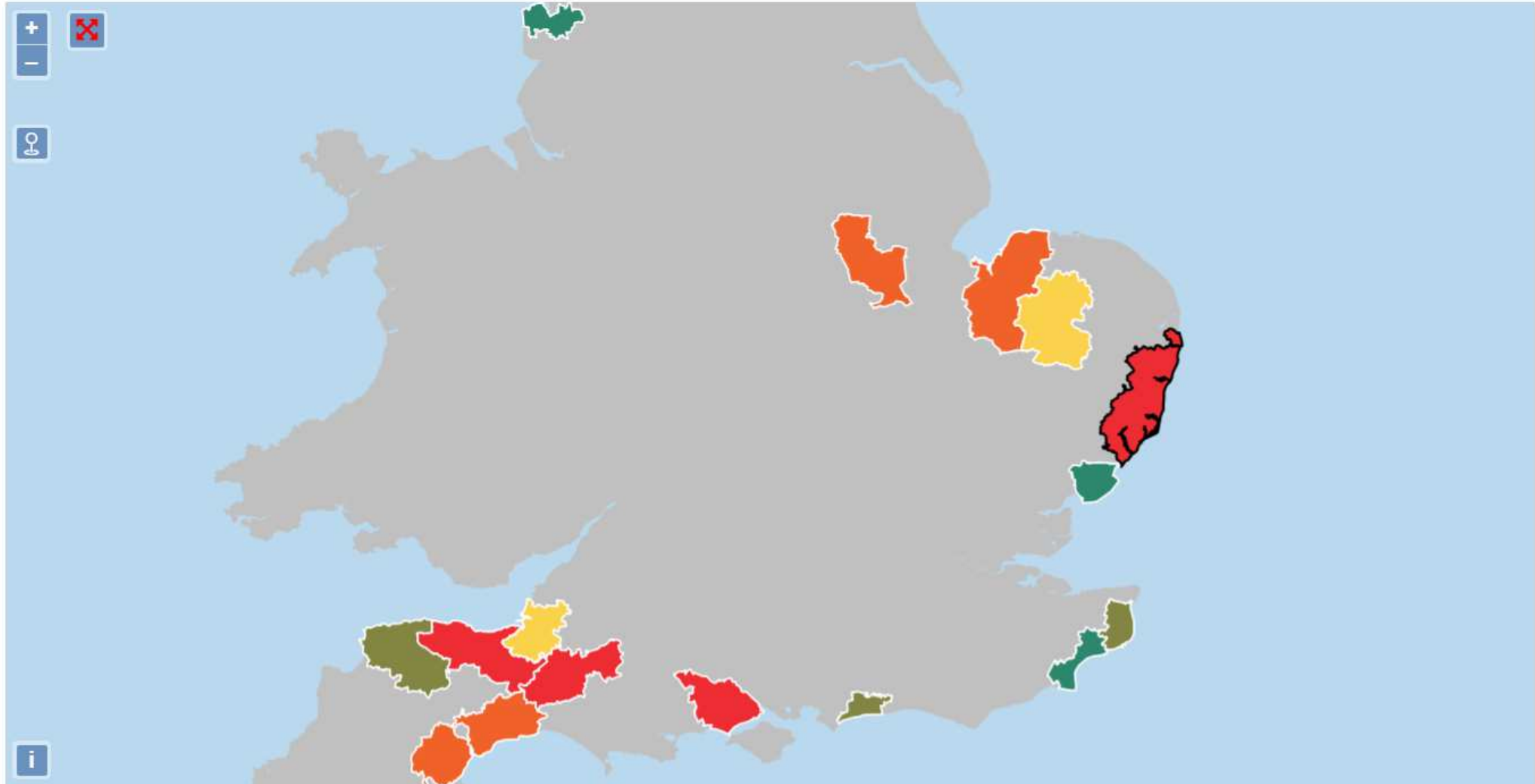


Year 6  
obesity



## Number of people per publicly accessible sports facility for East Suffolk and East Suffolk CIPFA nearest neighbours (2023)

1sts quintile

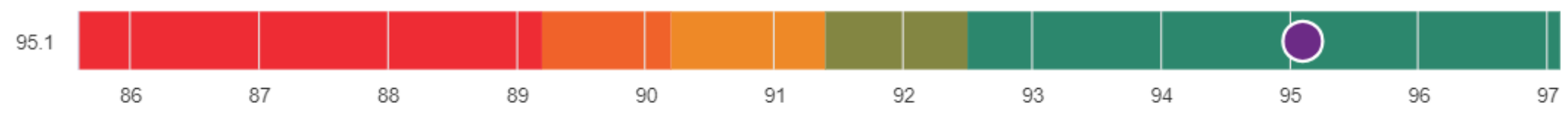


Source:

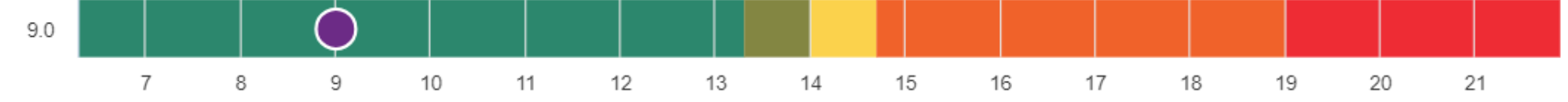
Office for National Statistics, Access to sports facilities and other amenities in your local area, [Number of people per publicly accessible sports facility](#), Data updated: 14 Mar 2024.

## East Suffolk (Quantiles of East Suffolk CIPFA nearest neighbours)

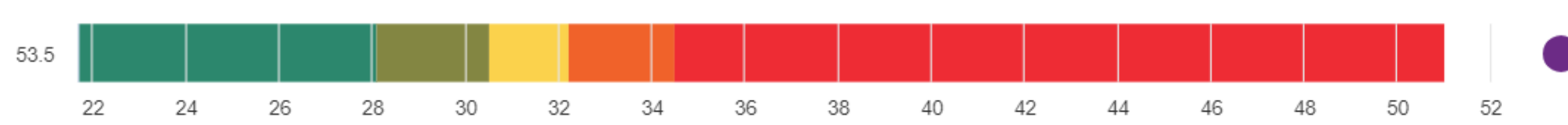
**% of adults who have participated in an activity in the last year 2022 %**



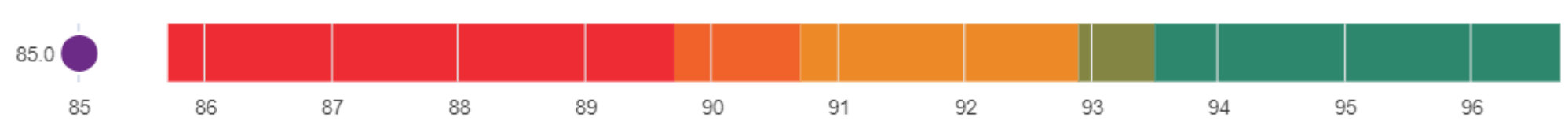
**% of adults who are inactive (No activity) 2022 %**



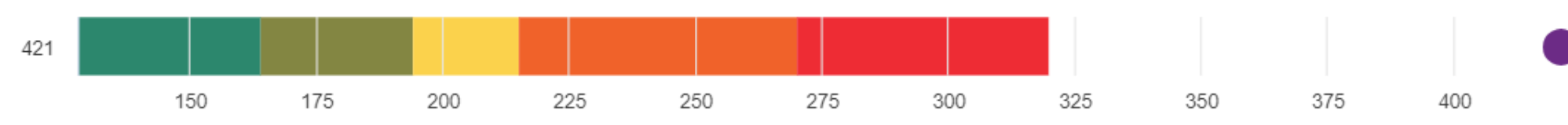
**% of those children who are less active (0 mins a day) 2022/23 (academic) % of children**



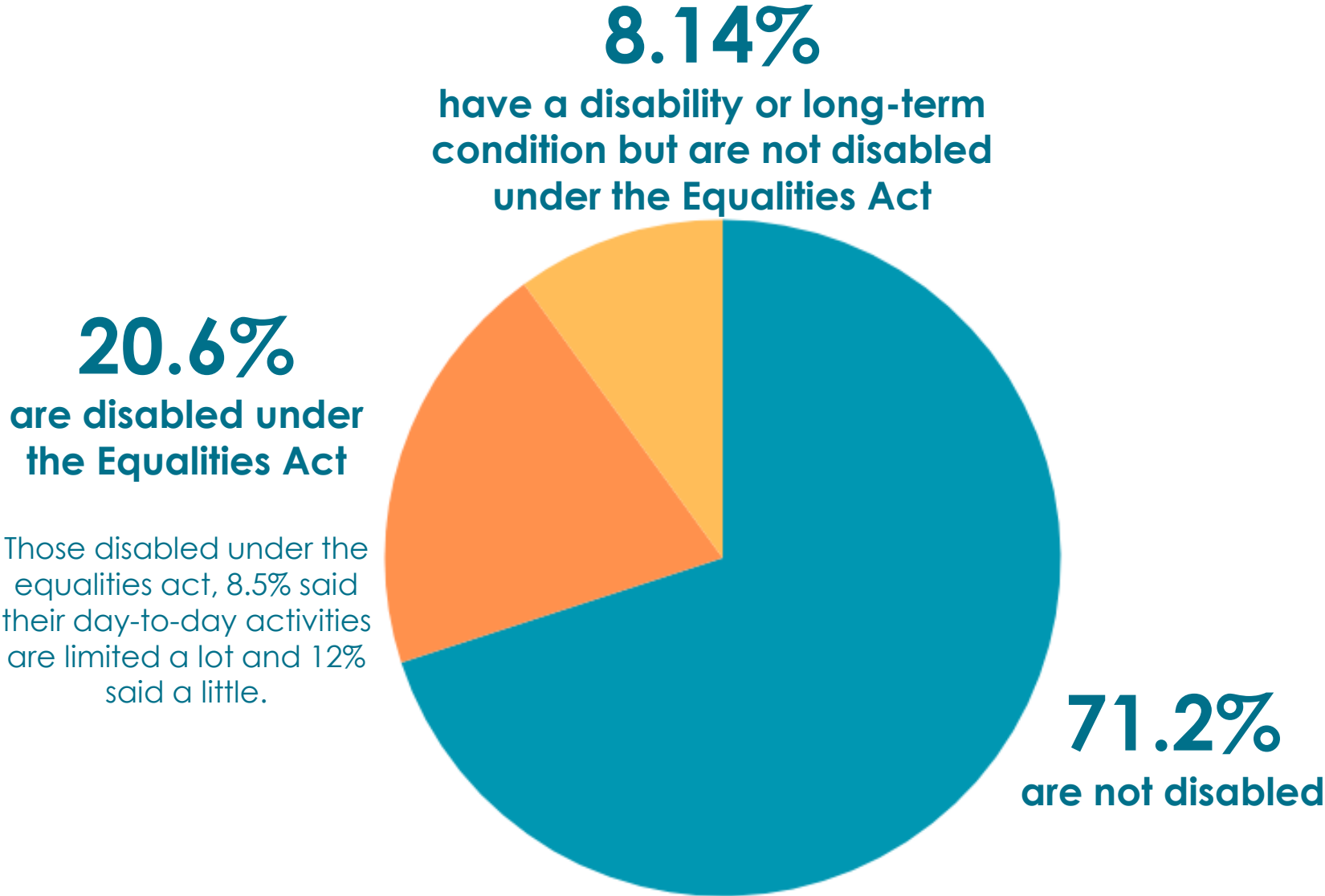
**% of children who participated in an activity once a week or more 2022/23 (academic) % of children**



**People per publicly accessible sports facility 2023 People**



# Health and social care Disability and carers



Those disabled under the equalities act, 8.5% said their day-to-day activities are limited a lot and 12% said a little.

**10%**  
of residents provide some kind of unpaid care

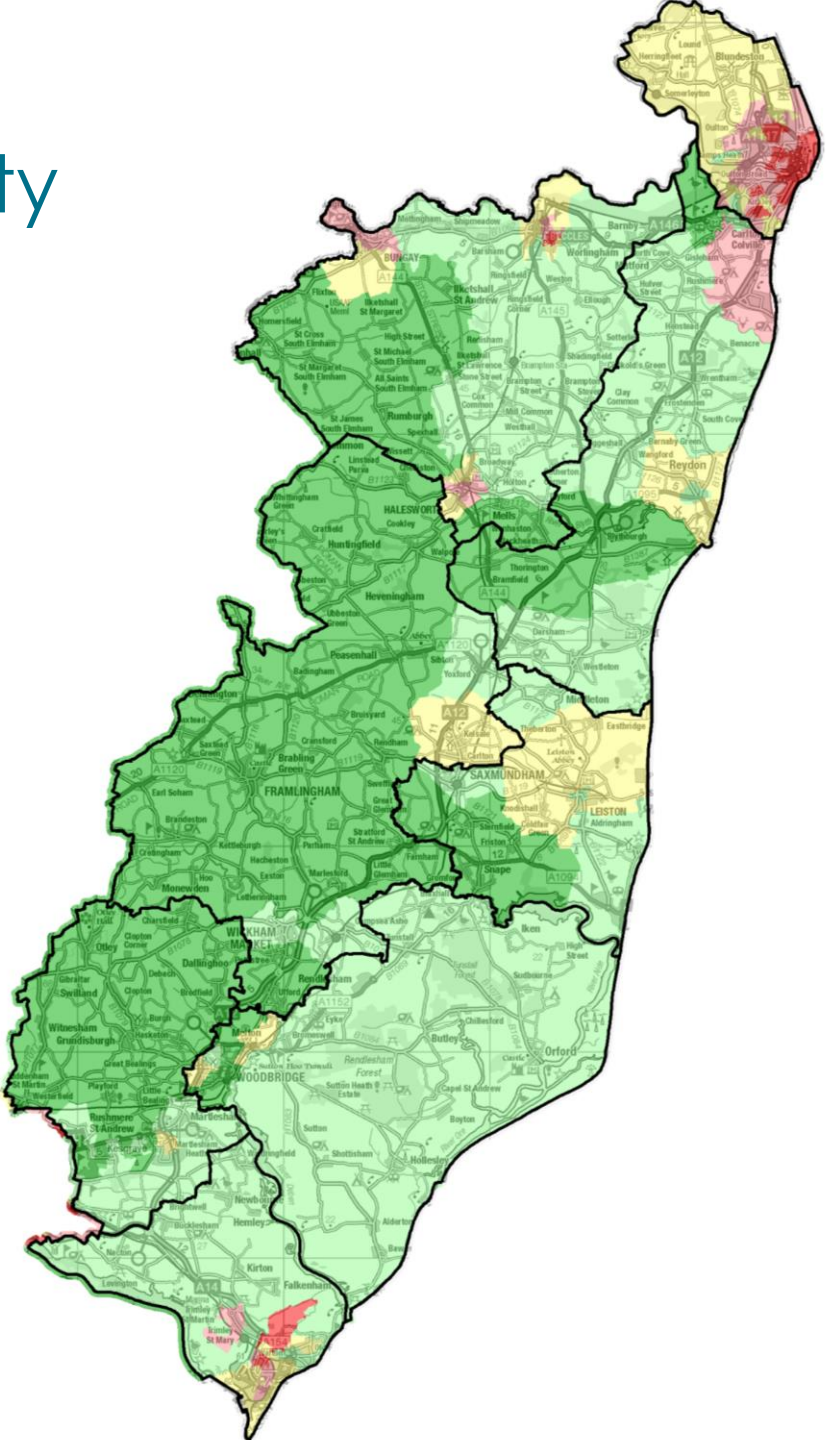
**3.1%** of these provide over 50 hours of care a week

# Health and social care

## Health Deprivation and Disability

### IMD health deprivation and disability domain

IMD quintile	Population	% of population
1	23,033	9.3%
2	50,067	20.3%
3	49,938	20.2%
4	77,126	31.2%
5	46,916	19.0%

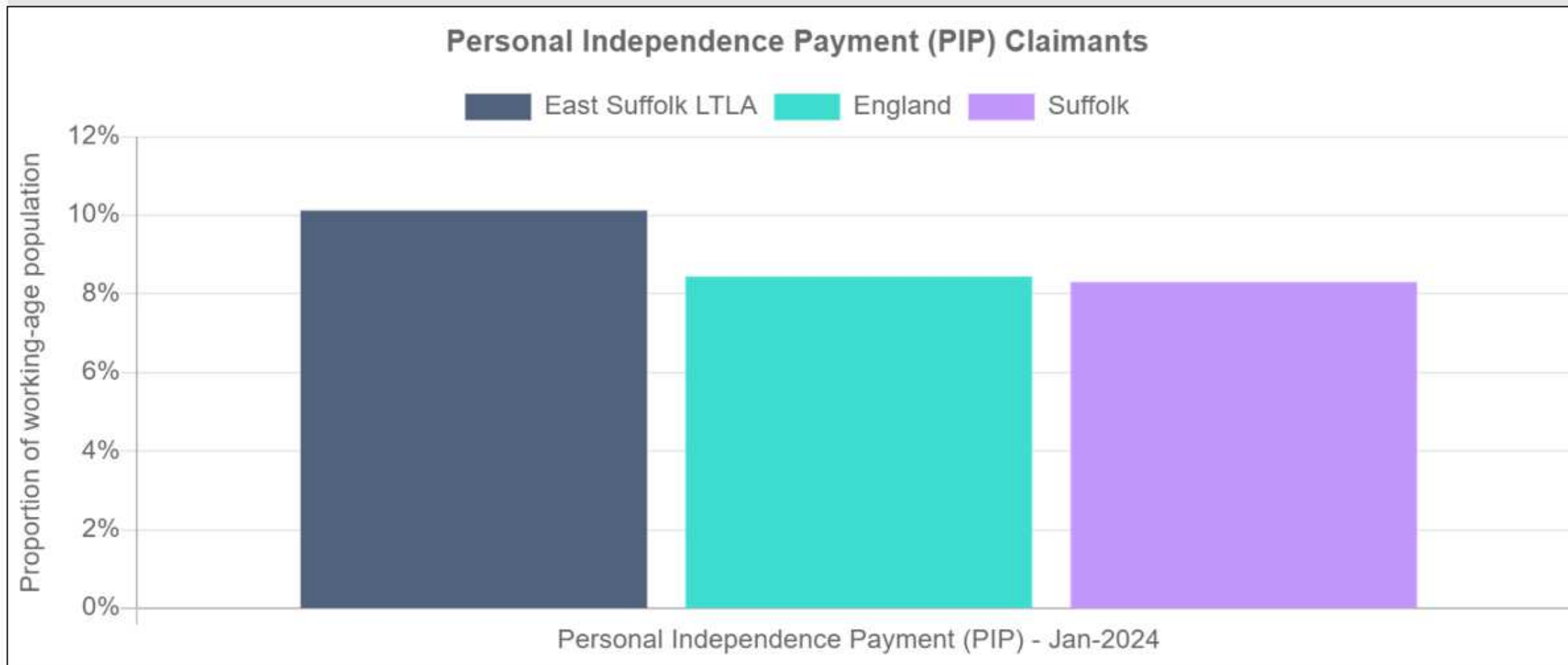


Sources: ONS 2022 mid-year population estimates, DCLG Index of Multiple Deprivation 2019 and Experian 2016Map © Crown copyright. All rights reserved. Suffolk County Council Licence No. AC0000849963 2024



A higher proportion of people in East Suffolk LTLA are claiming Personal Independence Payment (10.12%) than in England (8.44%) and a higher proportion than in Suffolk (8.30%).

### Personal Independence Payment (PIP) Claimants

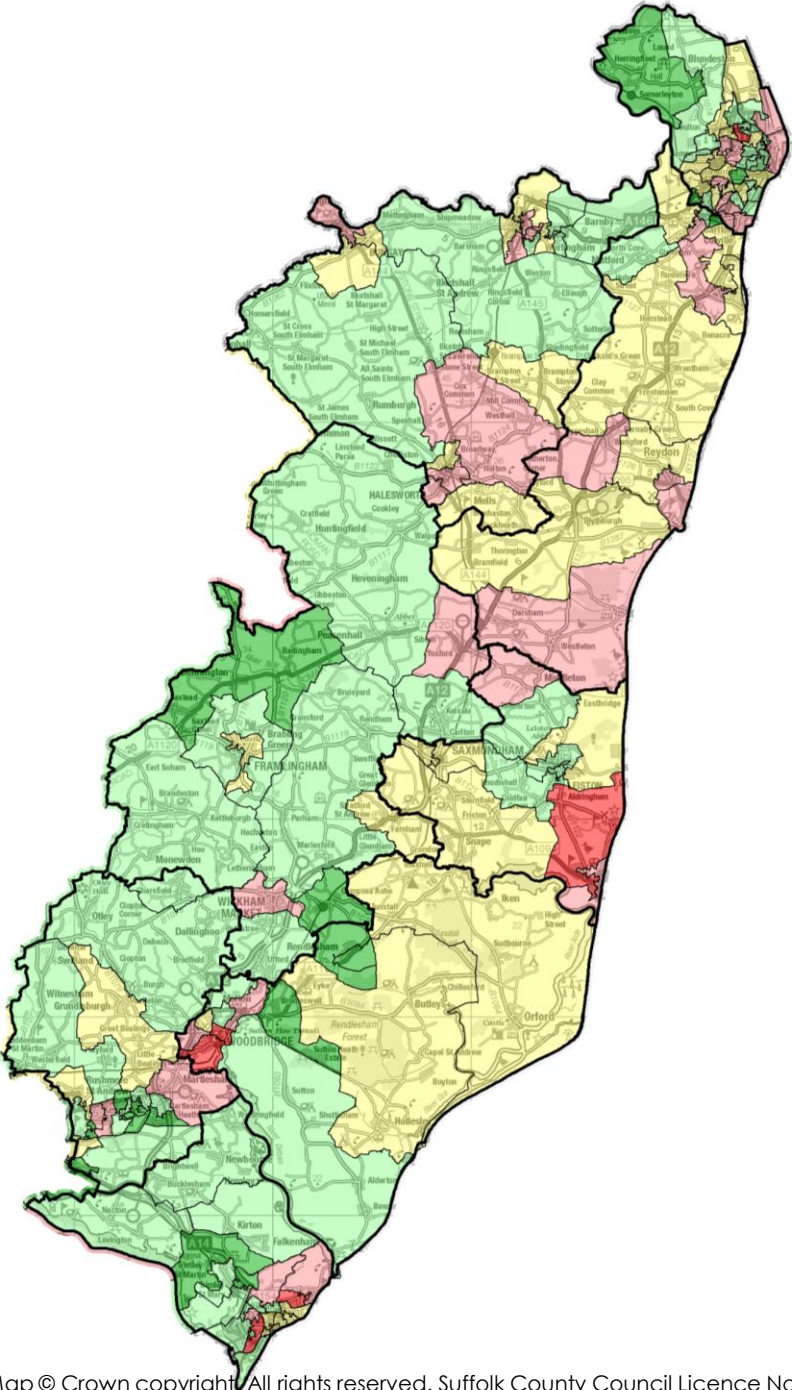
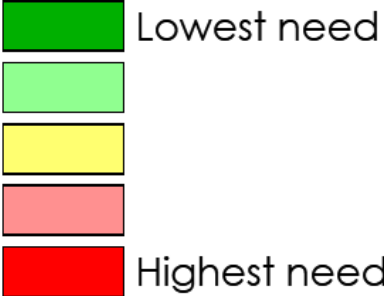


Source: Department for Work and Pensions (DWP)

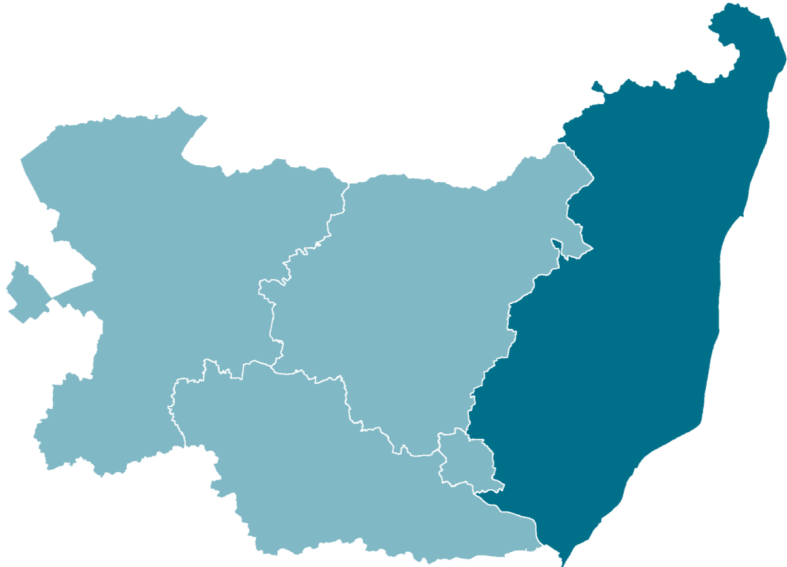
# Health and social care

## Social Isolation

### Social isolation index



# Employment, Education and Benefits



East Suffolk  
Community  
Partnerships

*Bringing ideas to life*

## Earnings by place of residence (2023)

	East Suffolk (Pounds)	East (Pounds)	Great Britain (Pounds)
<b>Gross Weekly Pay</b>			
Full-Time Workers	633.8	705.7	682.6
Male Full-Time Workers	685.5	755.6	728.3
Female Full-Time Workers	551.9	635.3	628.8
<b>Hourly Pay - Excluding Overtime</b>			
Full-Time Workers	15.82	17.89	17.49
Male Full-Time Workers	16.61	18.79	18.15
Female Full-Time Workers	14.67	16.85	16.64

Source: ONS annual survey of hours and earnings - resident analysis

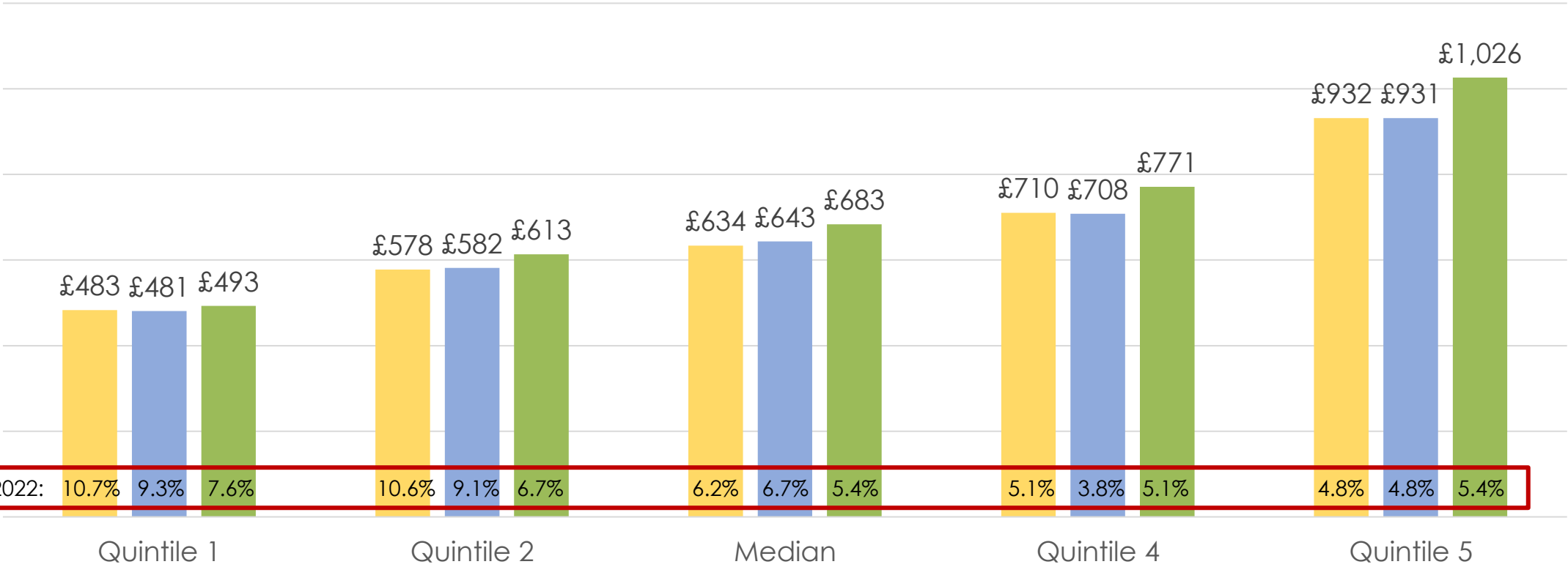
Notes: Median earnings in pounds for employees living in the area.

# Employment and education

## Income

### Gross weekly full-time pay by quintile, East Suffolk residents vs. Suffolk & England, 2023

East Suffolk Suffolk England



Source: ONS, Annual Survey of Hours and Earnings, 2023. (Note – we focus on weekly pay rather than annual pay, as the latter relates to employees who have been in the same job for more than a year. Therefore, the weekly pay data provides a better idea of differences and changes over 2023 than the annual pay data would.)

# Employment and education Benefit claimants

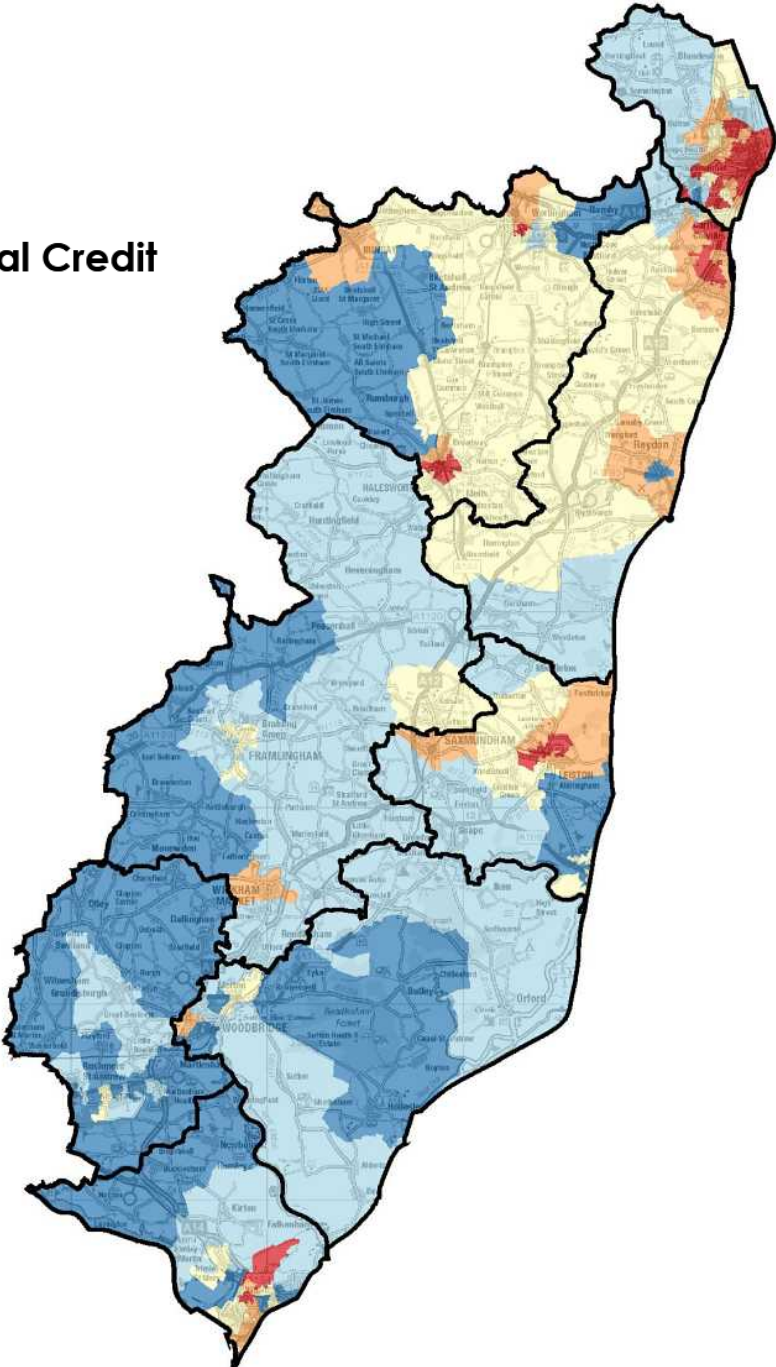
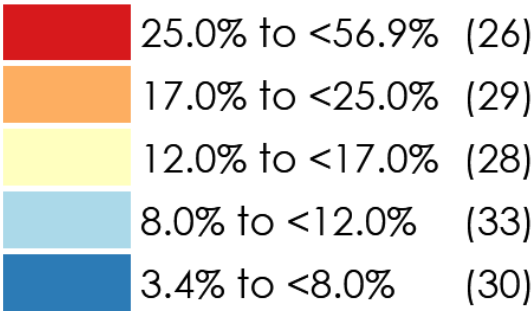


**16.7%**

of adults in receipt  
of Universal Credit

Increase from 14.5%  
Suffolk average: 15.3%  
Highest CP: Lowestoft 26.9%  
Lowest CP: Kesgrave & Martlesham 7.7%

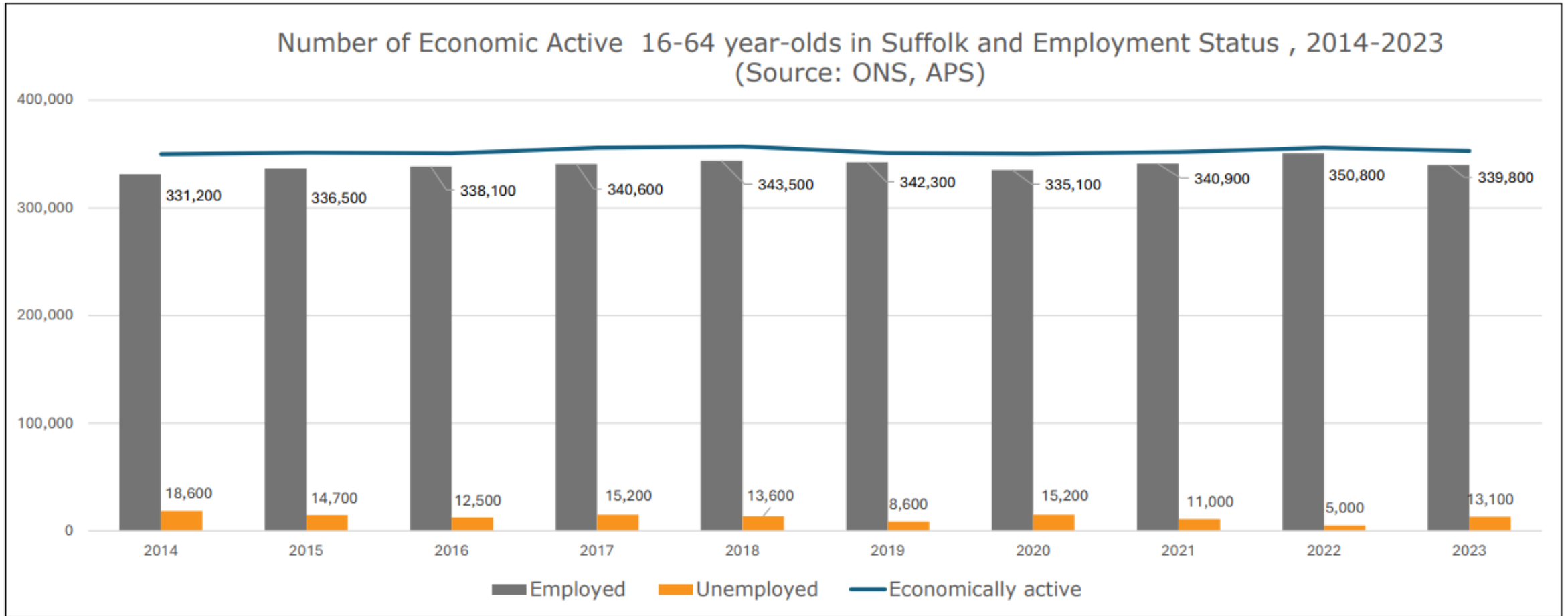
## % of adults claiming Universal Credit



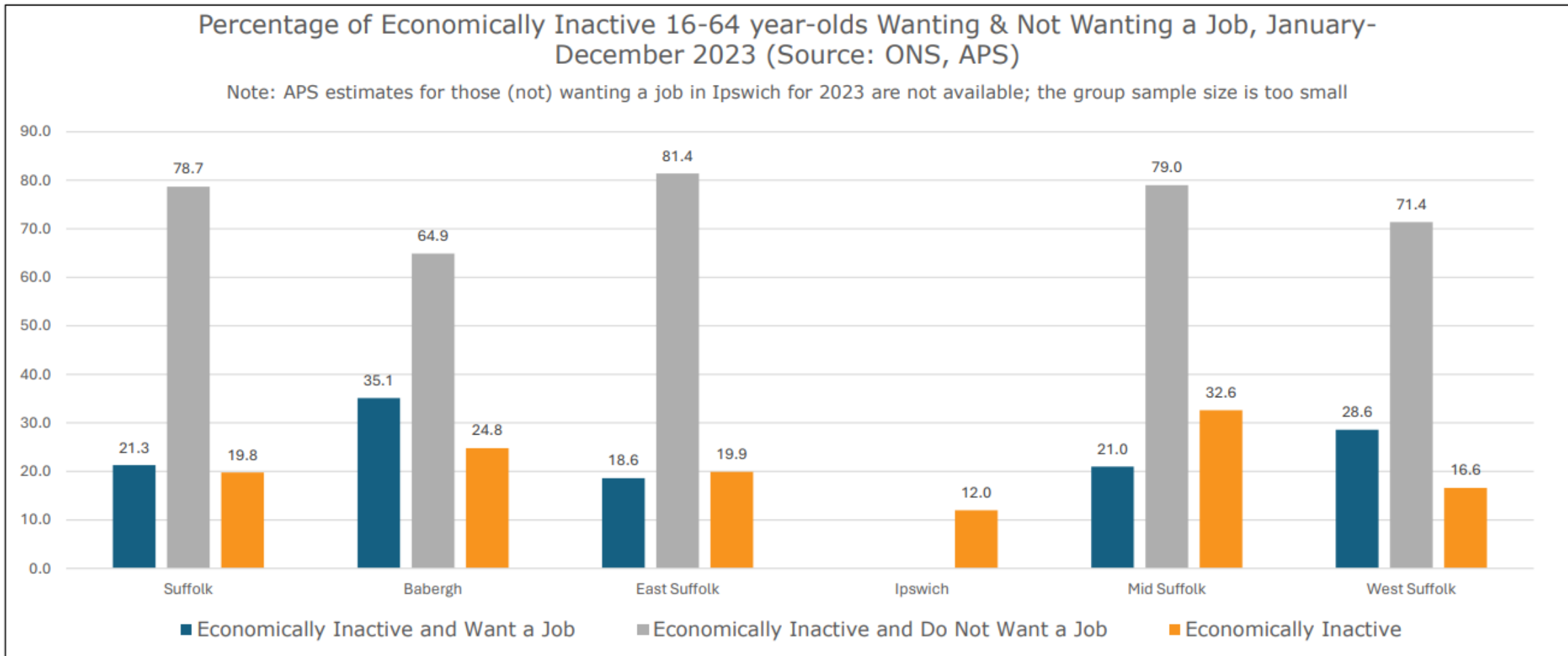
Source: DWP, March 2024 data applied to ONS 2022 mid-year estimates of working age (18-64) adults. Map © Crown copyright. All rights reserved. Suffolk County Council Licence No. AC0000849963 2024



The proportion of economically active 16-64 year-olds in Suffolk in employment has fluctuated significantly. There was a decline from 350,800 (80% of 16-64-year-olds) in 2022 to 339,800 (77.2%) in 2023, the lowest annual number in employment since 2016 except for the pandemic-related fall in 2020.

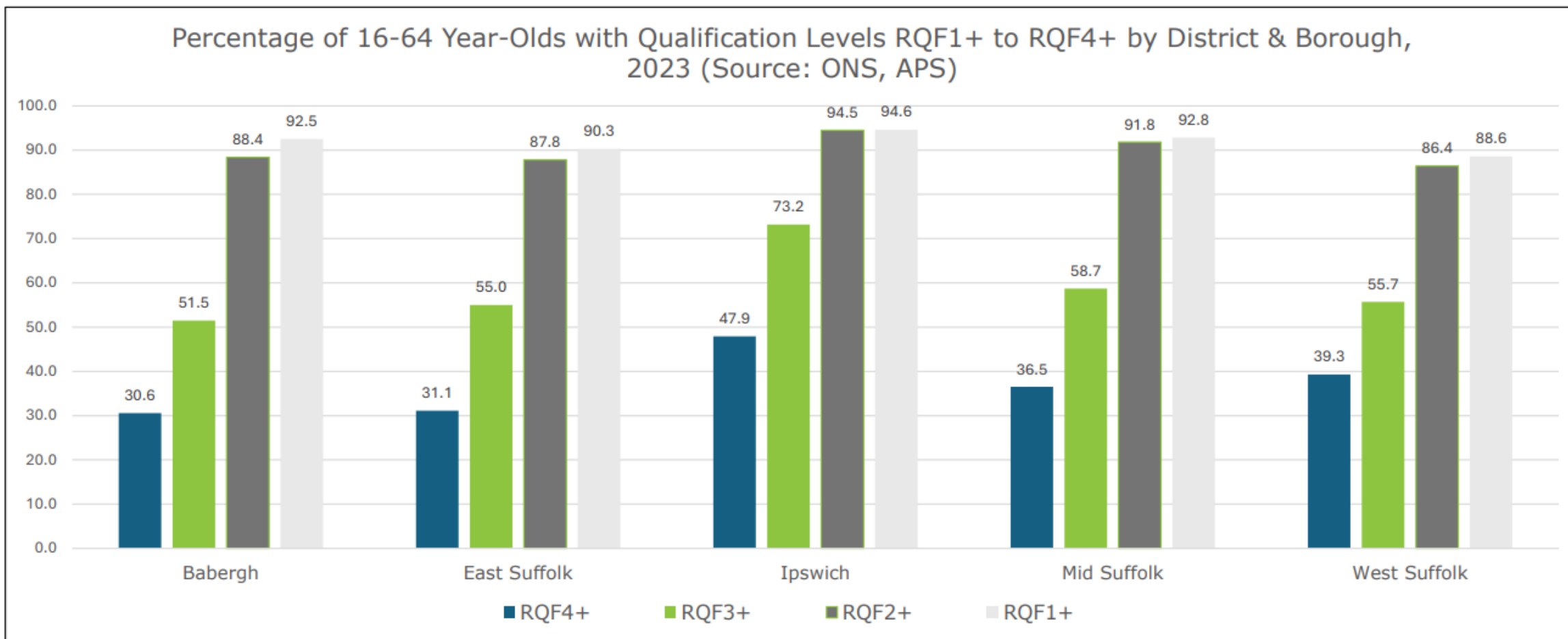


There is a wide variance across districts and boroughs in the percentage of economically inactive 16–64 year-olds who do want a job; Babergh and West Suffolk both have a higher proportion (35.1% and 28.6% respectively) than the Suffolk average of 21.3% whilst East Suffolk has 18.6%.





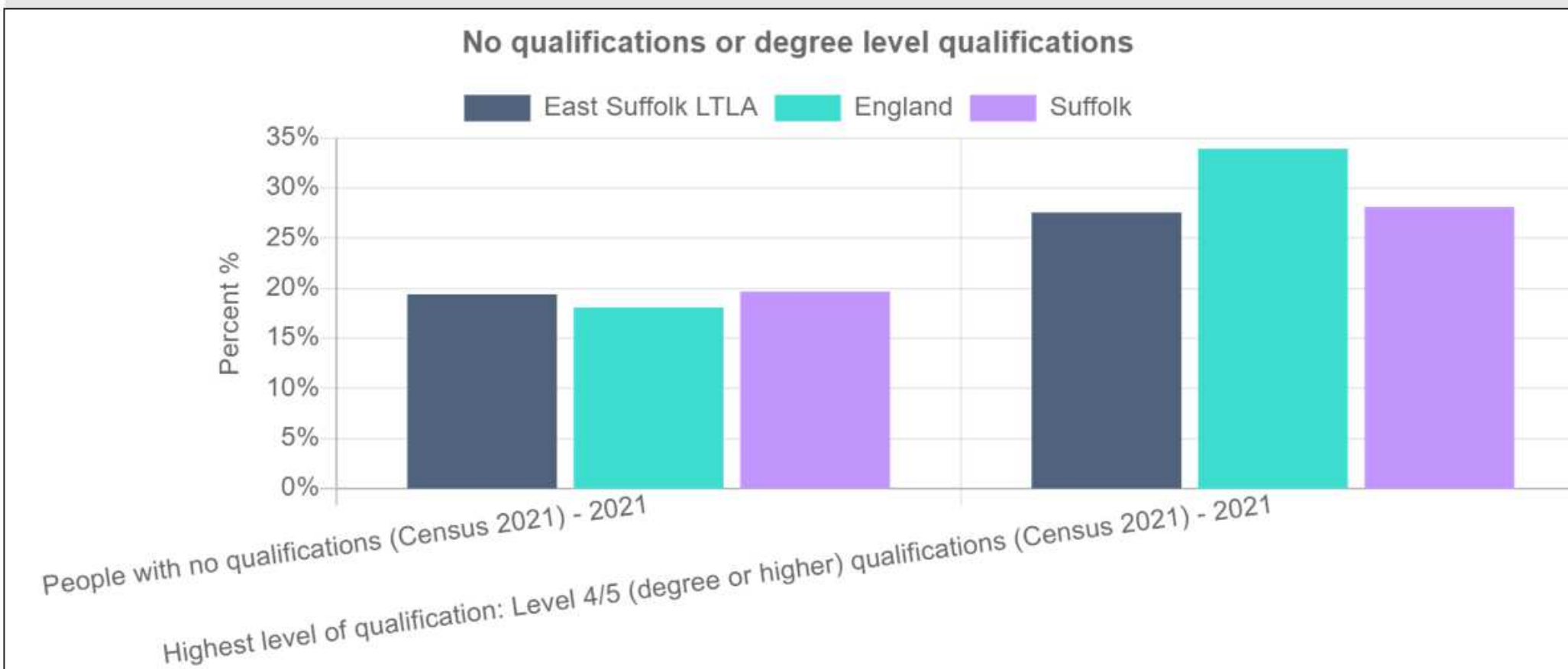
Ipswich has a substantially higher proportion at all qualification levels from Regulated Qualification Framework (RQF) level one upwards. However, all other districts have a substantially lower proportion of qualifications at level three or more and level four or more than the national average.



There are 40,105 people in East Suffolk with no qualifications - 19.40% of all people aged over 16. This is higher than the average for England (18.08%) and lower than the average in Suffolk (19.68%).

There are 56,968 people with degree level qualifications in East Suffolk, which is 27.56% of people aged 16+. This is lower than the average in England (33.92%) and in Suffolk (28.12%).

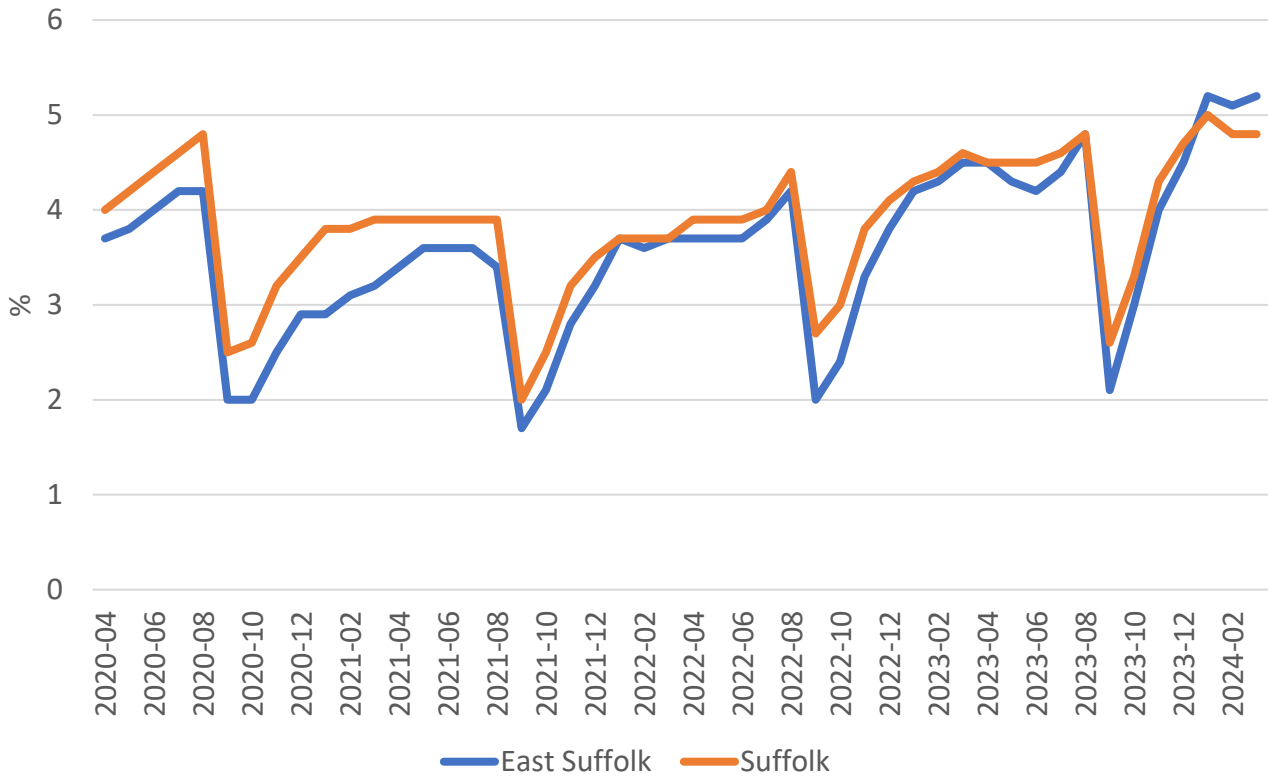
### No qualifications or degree level and above



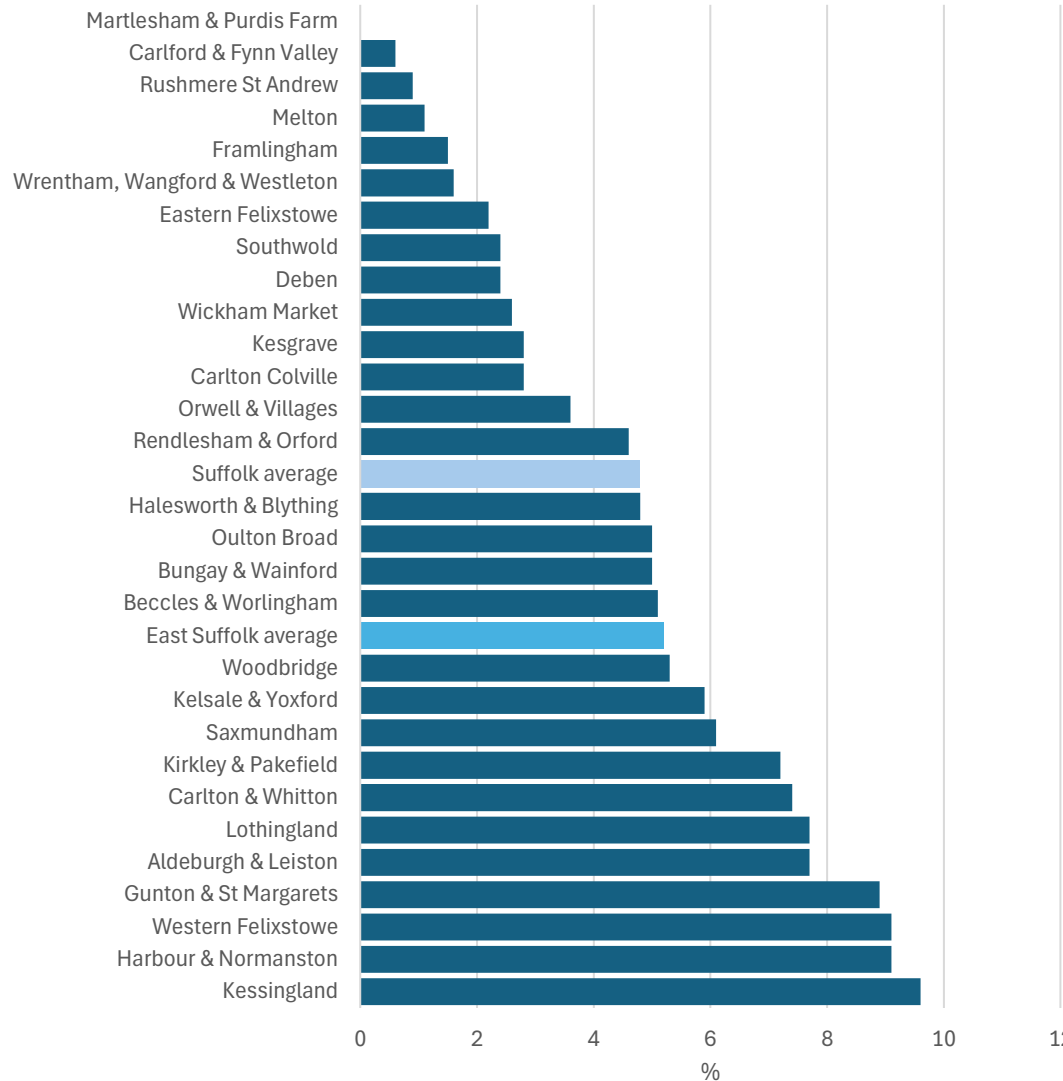
# Employment and education

## 16-17s Not in employment, education or training (NEET)

% 16-17-year olds NEET, 2020-2024

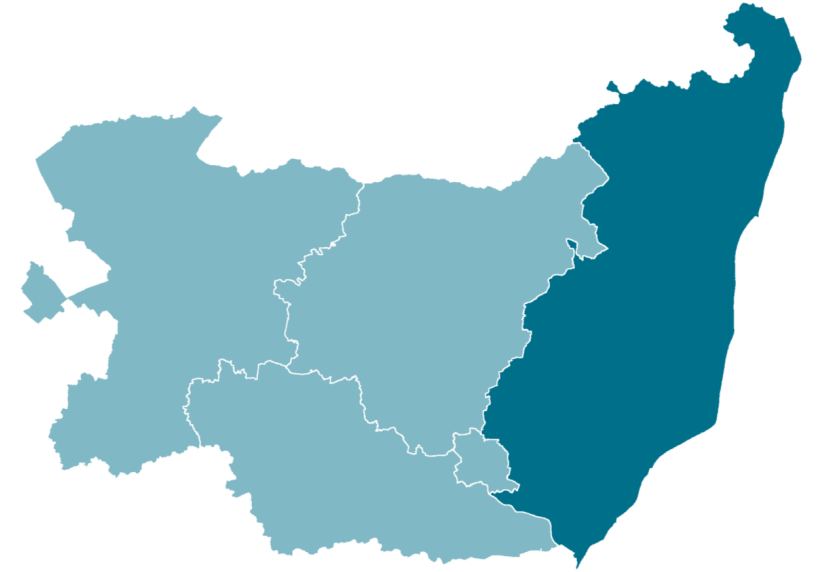


% 16-17-year-olds NEET in East Suffolk Wards, March 2024



Source: Suffolk County Council

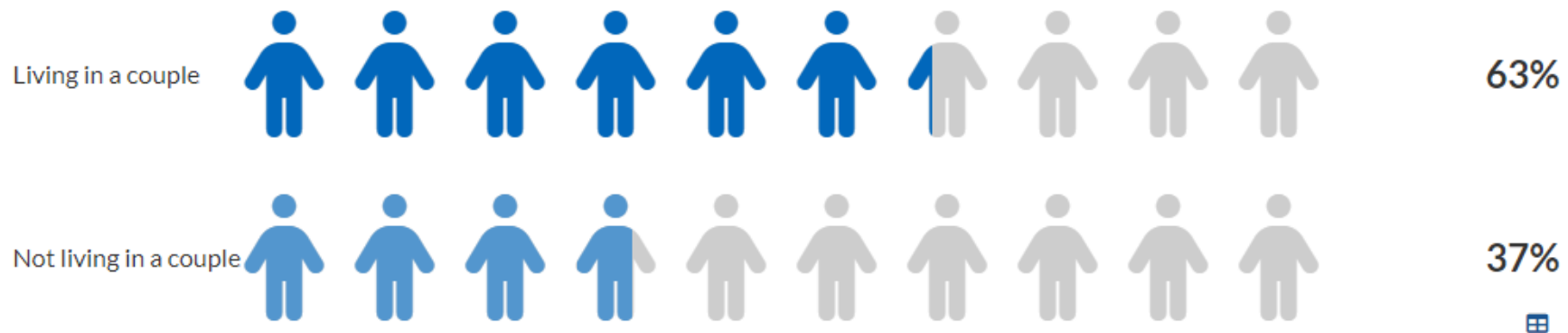
# Housing



East Suffolk  
Community  
Partnerships

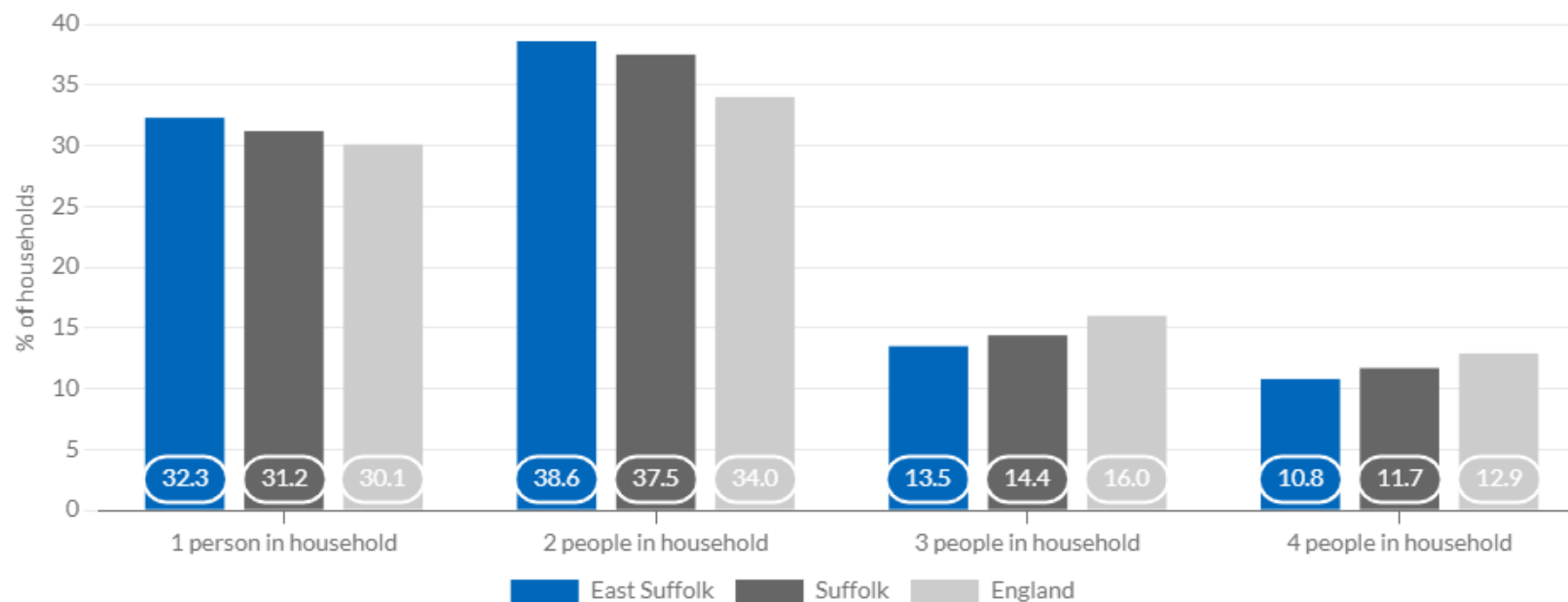
*Bringing ideas to life*

## Living arrangements for East Suffolk (2021)



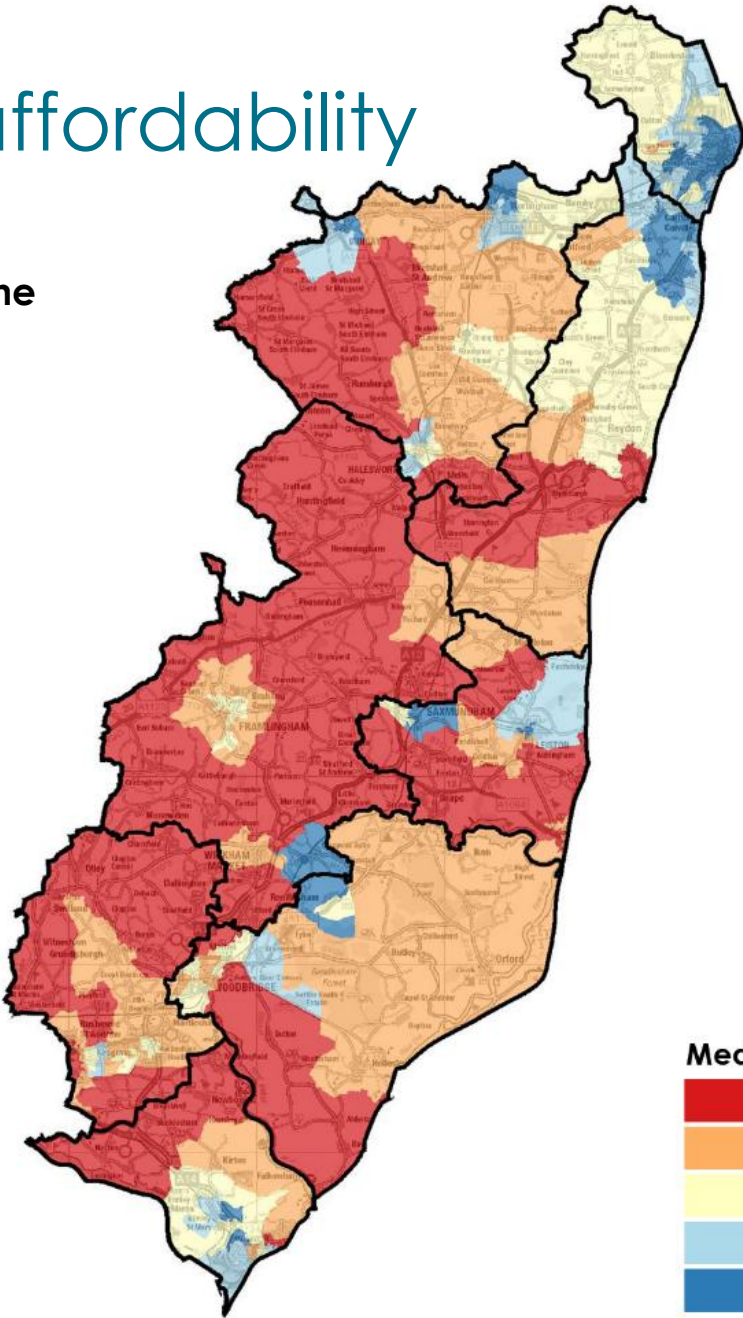
## Household Size

### Households with 1-4 people in household (2021)



# Housing Prices and affordability

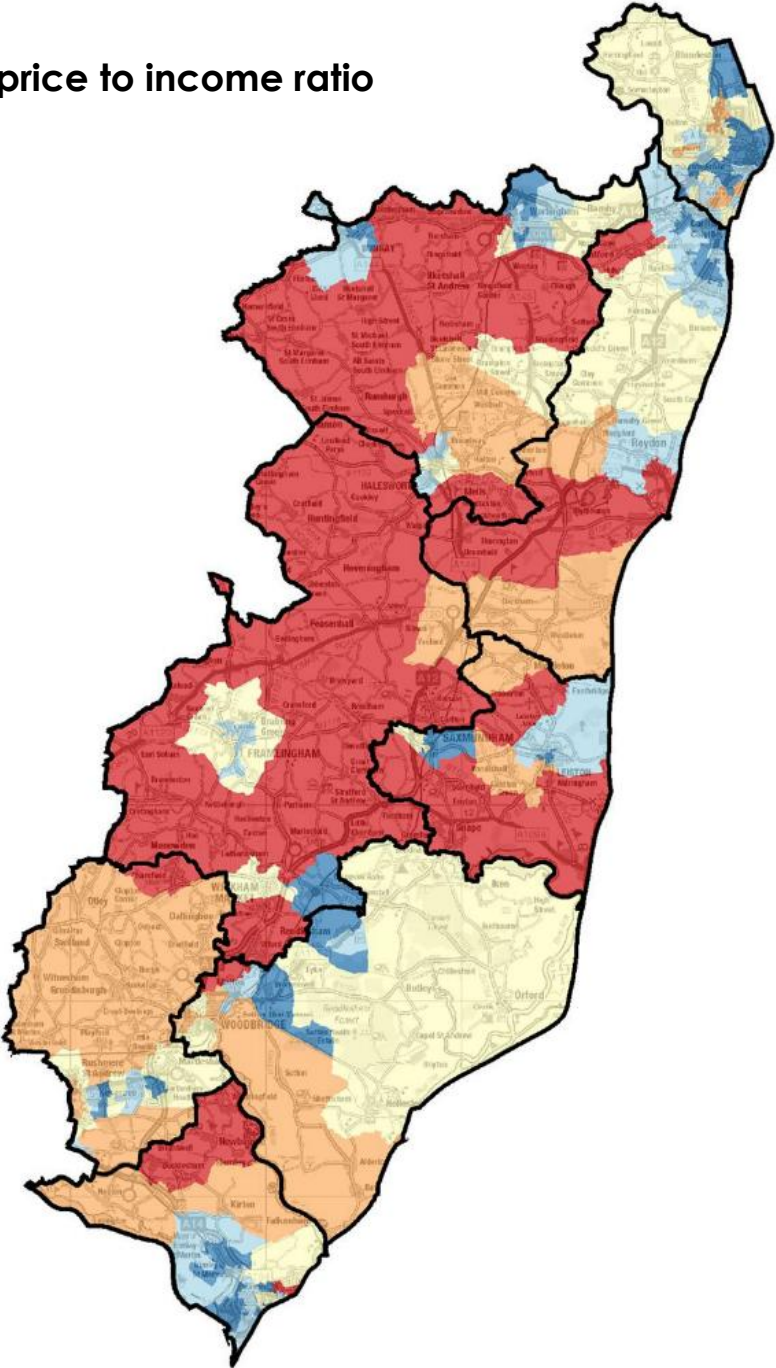
Average house price for the year to March 2023



**Median house price paid**

£450,000 to £701,000	(19)
£350,000 to £450,000	(29)
£290,000 to £350,000	(30)
£240,000 to £290,000	(36)
£130,000 to £240,000	(32)

Median house price to income ratio



**Median house price to income ratio**

9.0 to 15.6	(17)
7.5 to 9.0	(19)
6.5 to 7.5	(35)
5.6 to 6.5	(41)
3.8 to 5.6	(34)

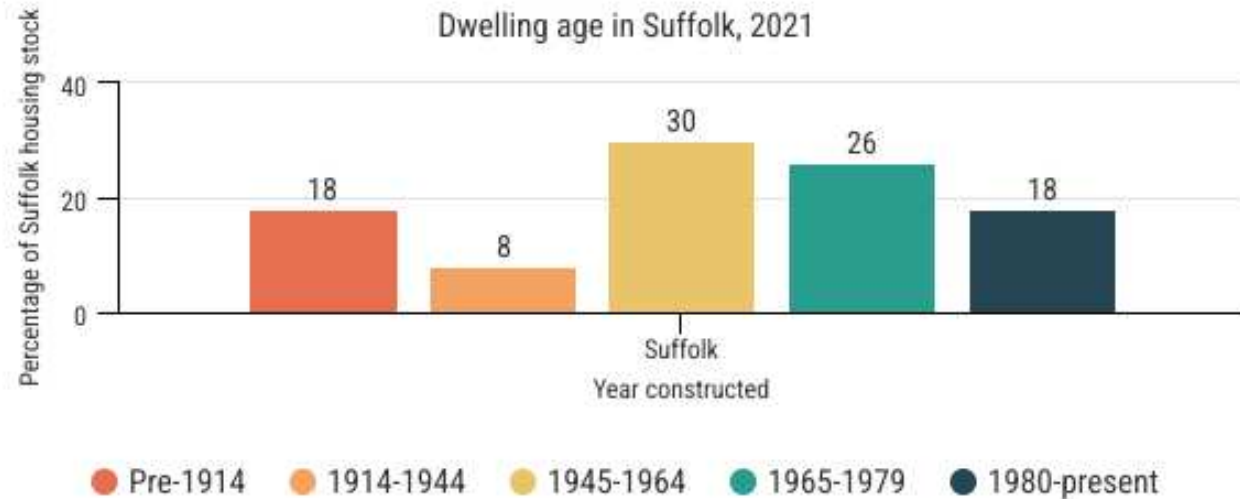
Source: ONS. Map © Crown copyright. All rights reserved. Suffolk County Council Licence No. AC0000849963 2024



## Dwelling age

- 18% of Suffolk's housing stock is constructed pre-1914 (62,950 households)

- 80% of the households we will be living in by 2050 are already built

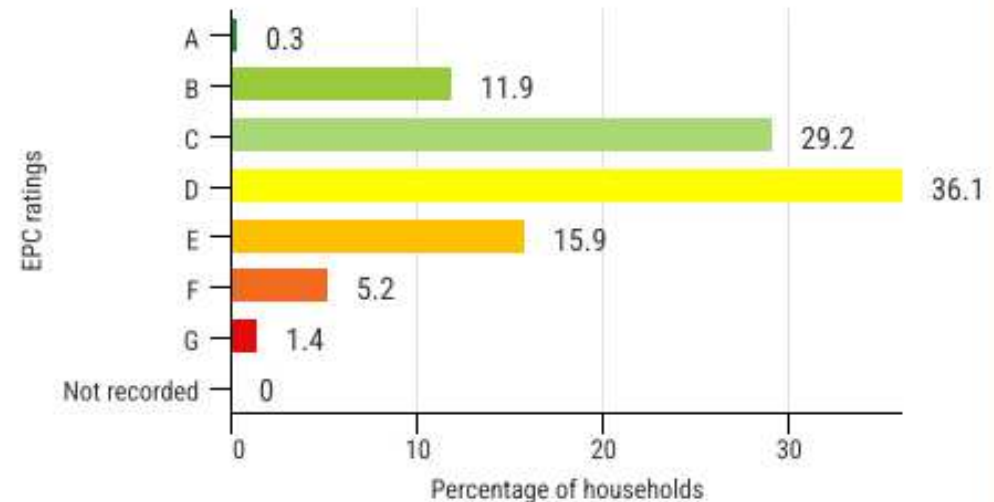


## Energy efficiency

- 41% of Suffolk dwellings have an EPC rating of band C and above
- 14.1% of Suffolk households (47,450) are estimated to be fuel poor in 2021
- The fuel poverty gap in England for 2023 was estimated at £417, an increase of 20% from 2022

*\*Estimate of the costs required for a household to no longer be classified as fuel poor*

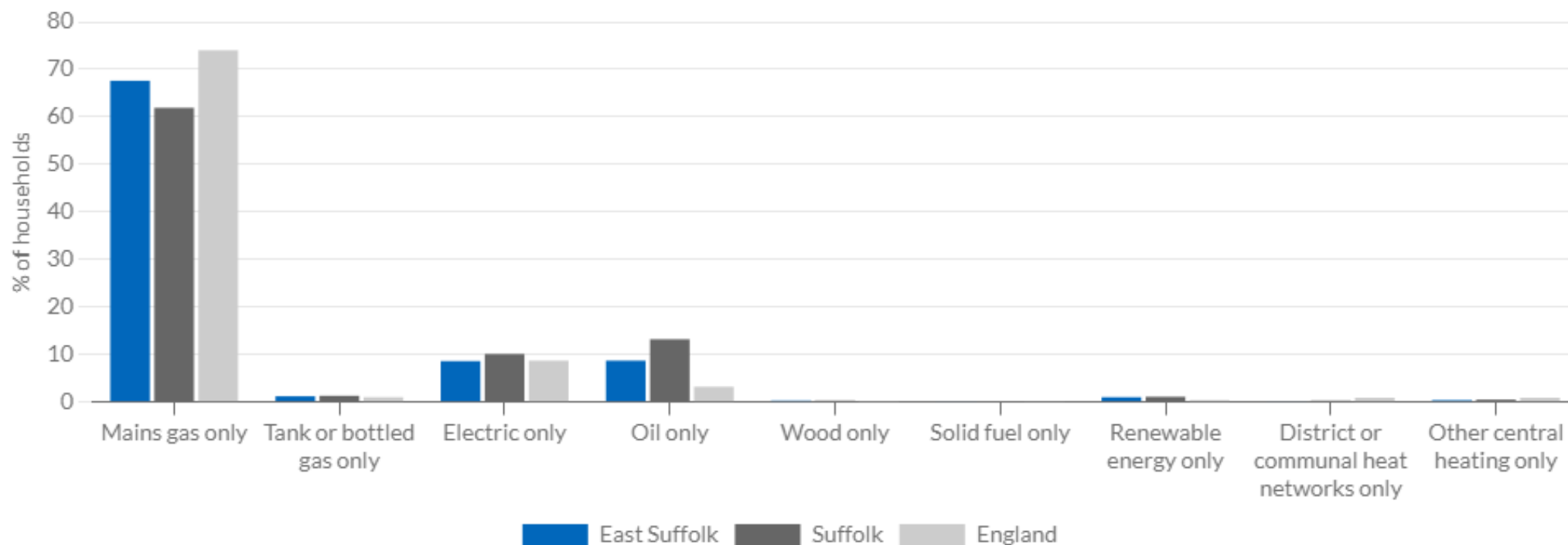
Percentage of Suffolk's housing stock by EPC band, Q2 2023



## Central Heating

Data from the 2021 census shows that **1,564** households in **East Suffolk** responded as having no form of central heating, which is **1.4%** of households. This compares to a value of **1.5%** for **England**.

Central heating by type (2021)

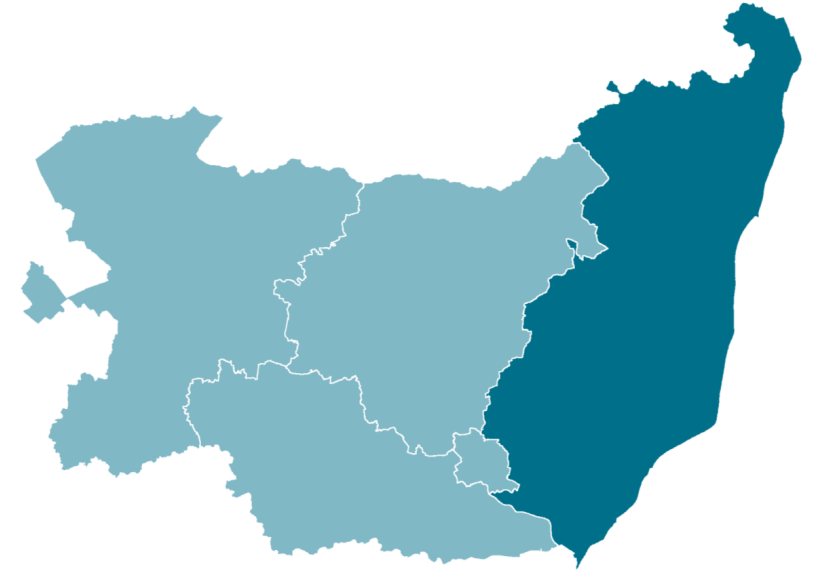




# Suffolk Housing and Health Needs Assessment

- Housing and health are inextricably linked - unsuitable and unaffordable housing contributes to health inequalities across Suffolk
- Homes in Suffolk are increasingly unaffordable, with house prices outpacing income growth by almost double over the last 20 years, disproportionately affecting those on lower incomes
- Our population continues to age, requiring more homes to support independent living.
- The majority of Suffolk's housing will require extensive upgrades to remain suitable.
- Alongside affordability issues, many households live in homes with poor energy performance
- Cold and damp properties impact on health, but improvements are costly/unviable without subsidies only available to those on the lowest incomes because of the high cost of retrofitting
- There are a significant number of older properties that cannot be improved (due to building codes and regulations, structural issues, and preservation rules among other challenges)
- Rising homelessness and the social housing waiting list demonstrate the gap between housing need and supply

# Community Safety

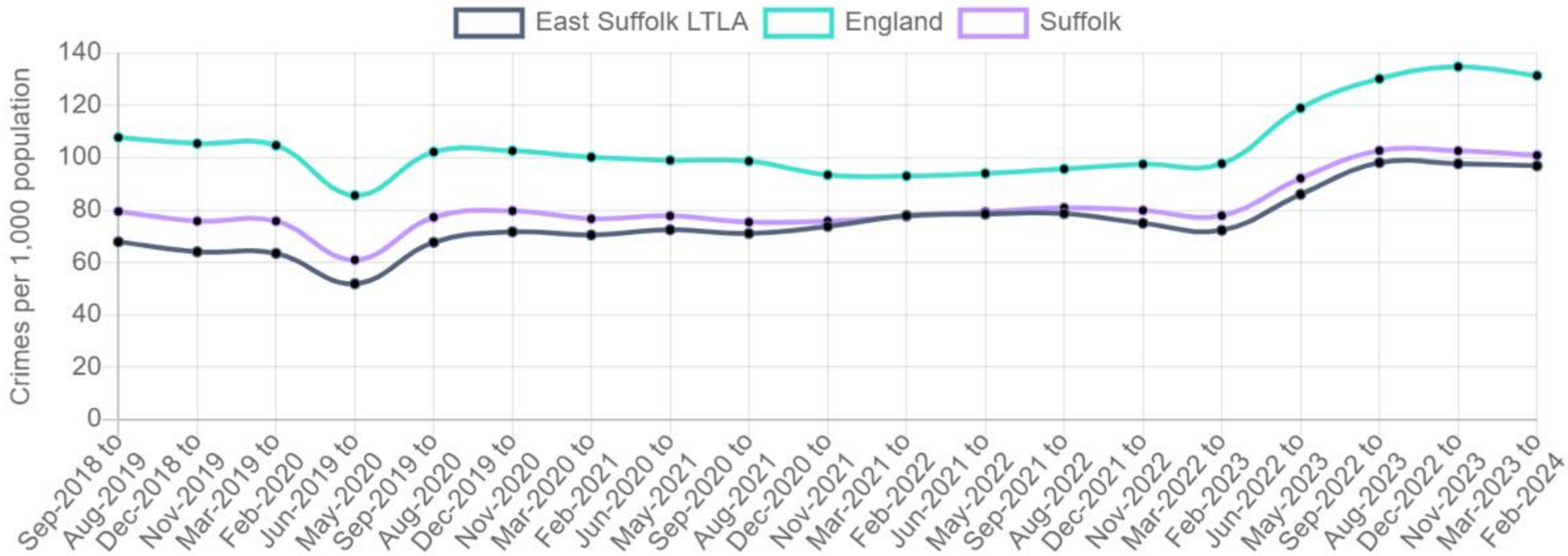


East Suffolk  
Community  
Partnerships

*Bringing ideas to life*

## 12 month total crime rate (time series)

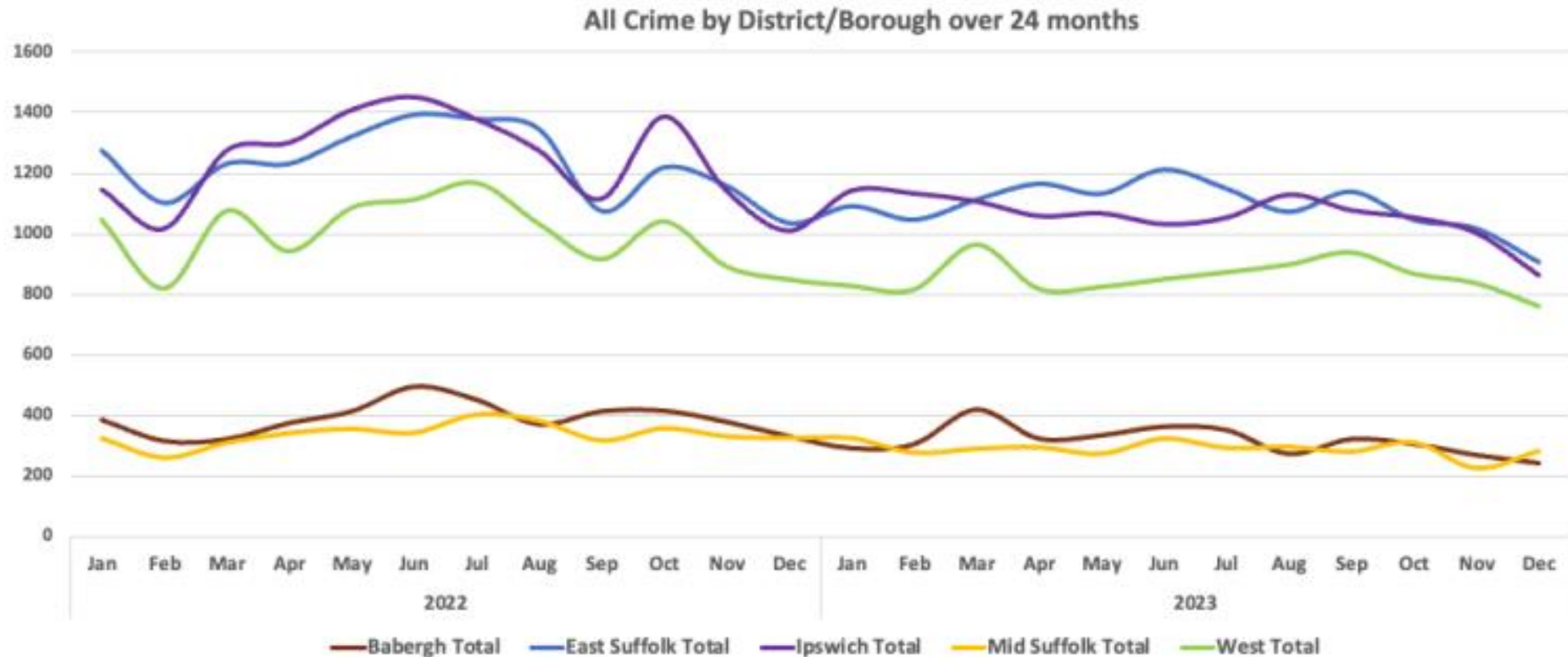
### 12 month total crime rate (time series)



Source: Police UK

# Suffolk Crime and Disorder Overview

The overall level of recorded crime in Suffolk has been declining over the last 24 months and 12 months as shown in the chart below. There were 43,328 crimes recorded from January 2023 to the end of December 2024.



## East Suffolk CSP

- 53% increase in shoplifting (577 in 2022 compared to 884 in 2023)
- 20% increase in vehicle offences, mainly related to unauthorised taking of a vehicle (457 in 2022 compared to 547 in 2023)
- 14% increase in possession of weapons (147 in 2022 compared to 169 in 2023)
- 27% reduction in sexual offences, mainly related to a large reduction in reported rape offences (753 in 2022 compared to 546 in 2023)
- 27% reduction in public order offences (1597 in 2022 compared to 1170 in 2023)
- 19% reduction in robbery (62 in 2022 compared to 50 in 2023)
- 16% reduction in violence against the person offences (6483 in 2022 compared to 5455 in 2023)

## SSCB PRIORITIES

### **Criminal Exploitation**

inc Serious Violence & Modern Slavery

### **Violence Against Women & Girls**

inc Domestic Abuse, Sexual Violence  
& Serious Violence

### **Preventing Radicalisation**

## CSP PRIORITIES

in addition to specific aspects  
of SSCB priorities

### **Anti-Social Behaviour**

### **Fraud/Computer Misuse**

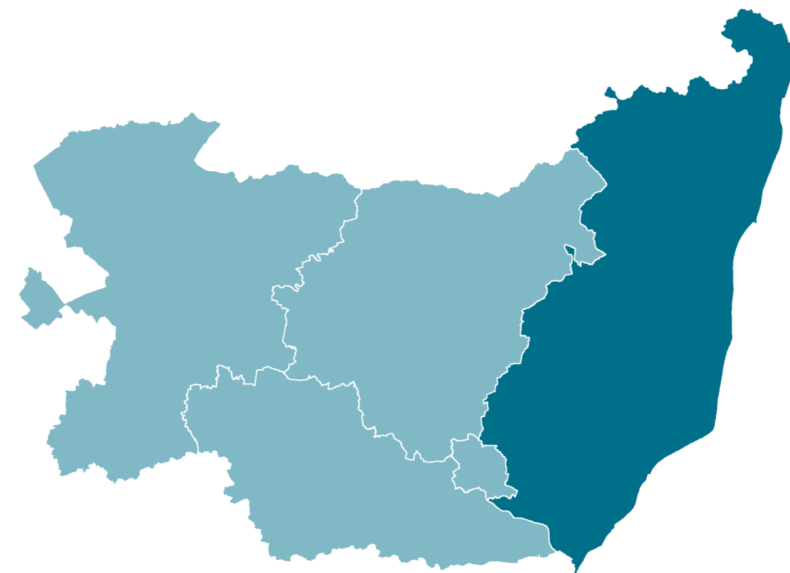
### **Hate Crime**

### **Theft/Shoplifting**

### **Emerging Issues**



# Community

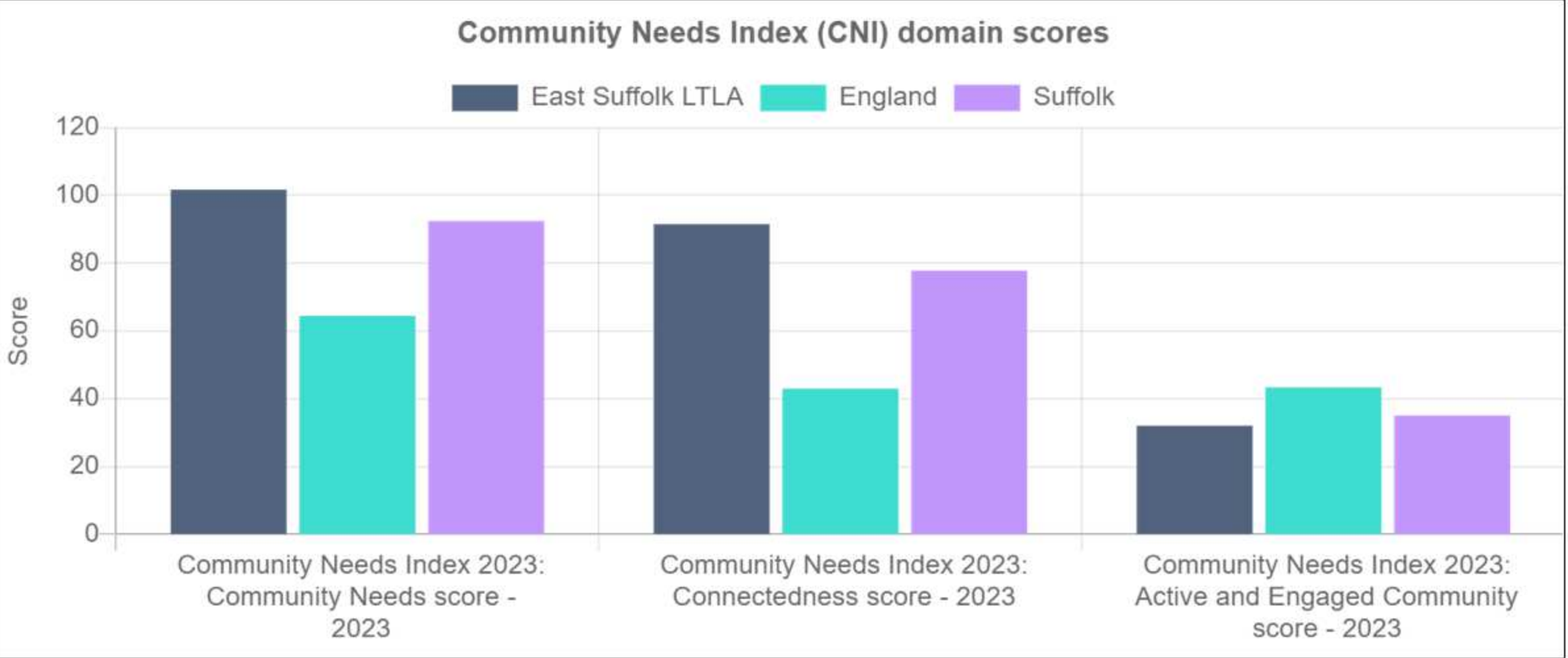


East Suffolk  
Community  
Partnerships

*Bringing ideas to life*

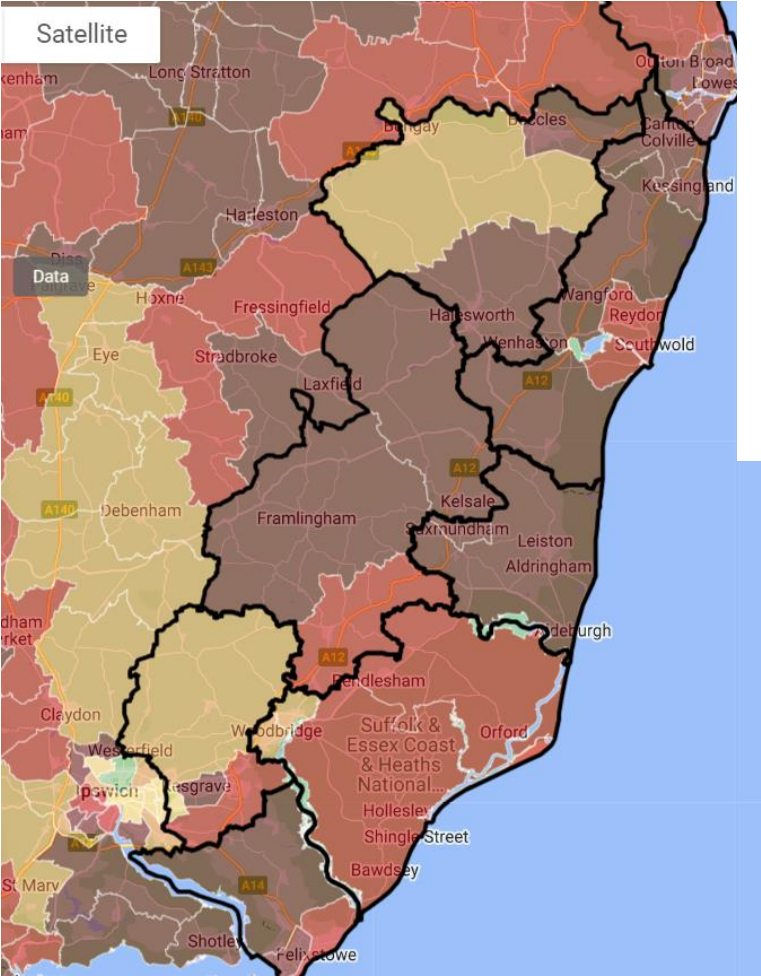
East Suffolk has high levels of overall need on the Community Needs Index than England (65.55) and Suffolk (65.93), with an overall score of 75.14

CNI domain scores









Source: Oxford Consultants for Social Inclusion (OCSI)

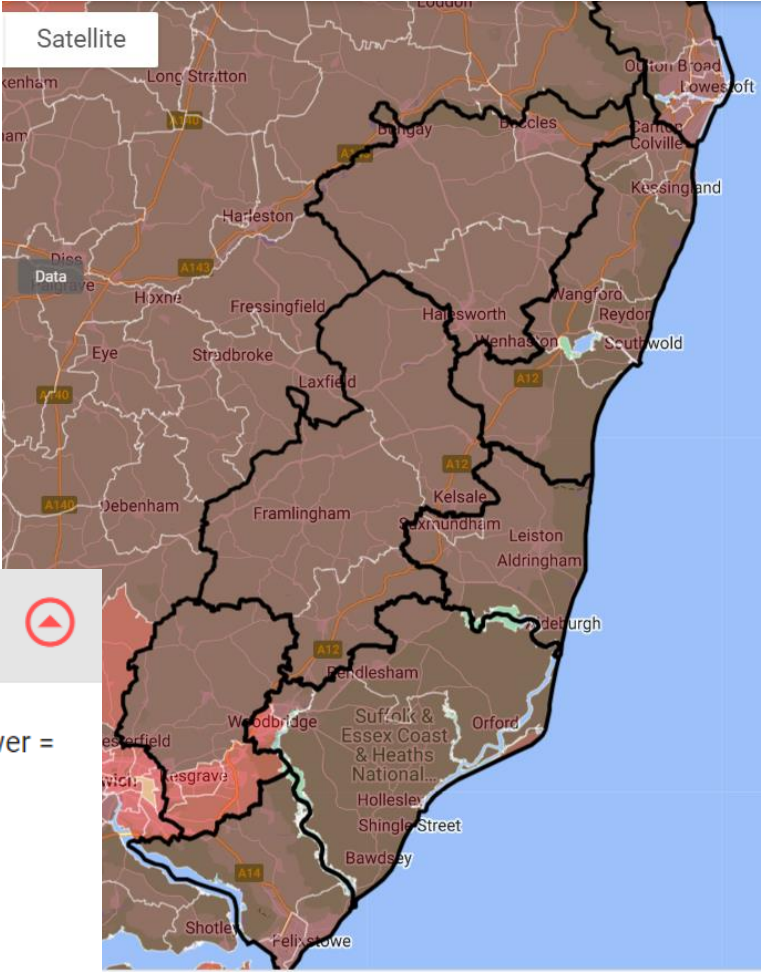
### Community Needs Index 2023: Community Needs rank



Community Needs Index: Community Needs Rank (lower = greater need)


 Current Level: **Electoral Wards/Divisions**






-  24,660 - 33,640
-  18,455 - 24,659
-  13,216 - 18,453
-  8,121 - 13,216
-  64 - 8,119



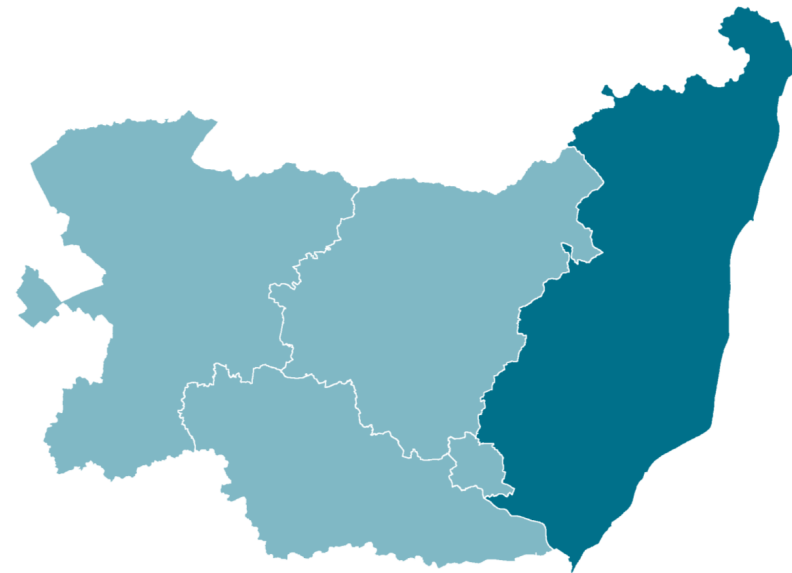
### Community Needs Index 2023: Connectedness rank

Community Needs Index: Connectedness rank (lower = greater need)

 Current Level: **Electoral Wards/Divisions**

-  23,969 - 33,696
-  18,010 - 23,967
-  12,236 - 18,006
-  6,576 - 12,232
-  11 - 6,576

# Transport

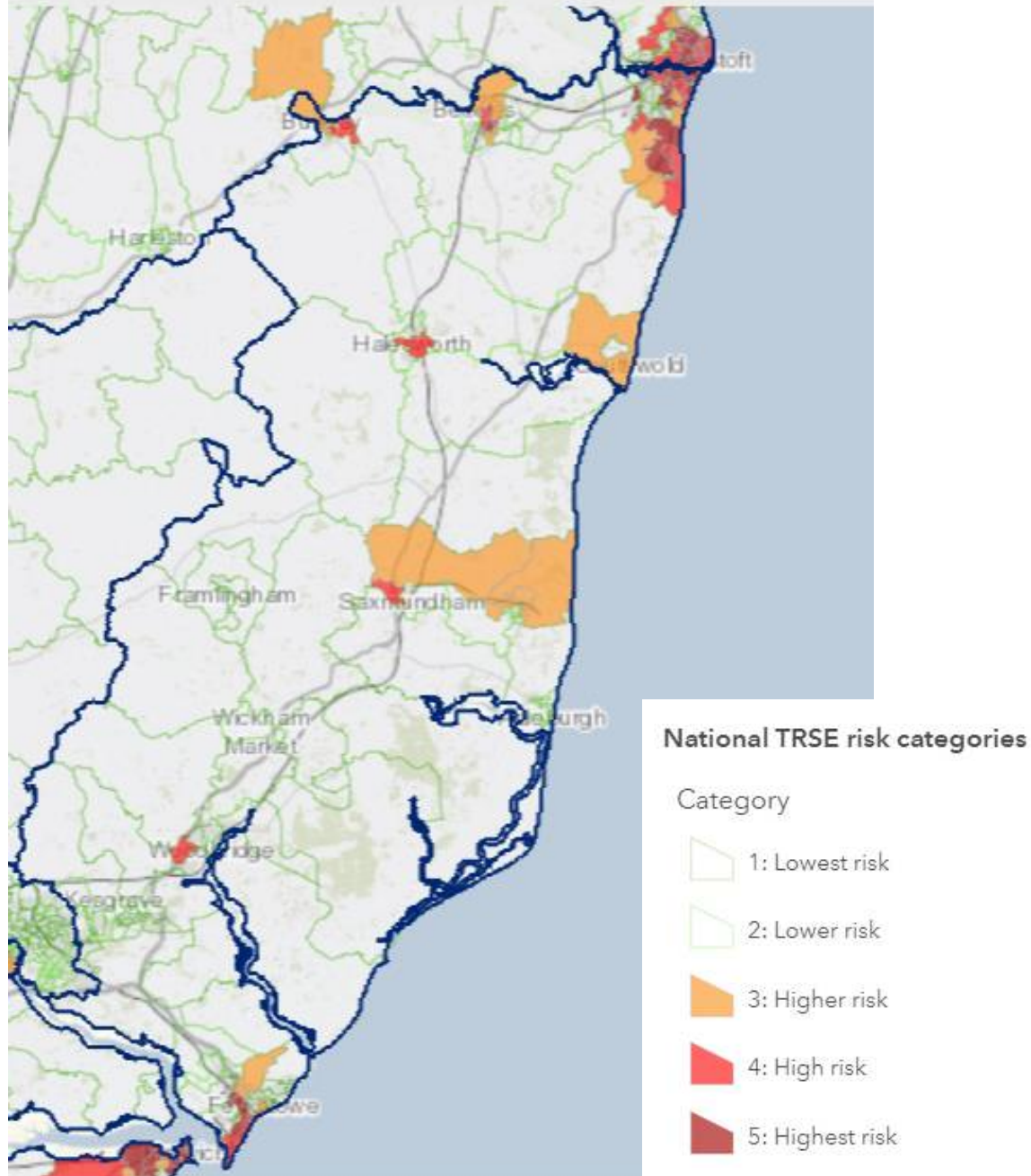


East Suffolk  
Community  
Partnerships

*Bringing ideas to life*



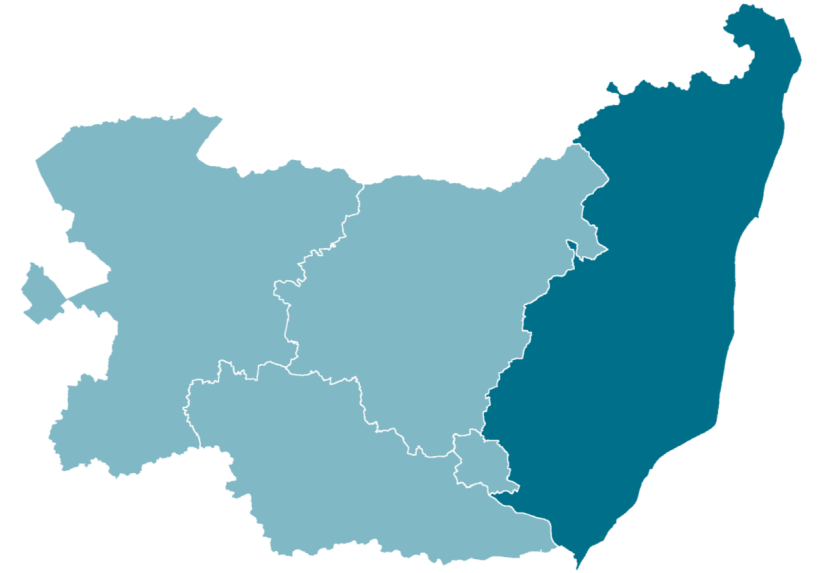
# National TRSE Risk Categories



## National Transport Related Social Exclusion Project

“Transport-related social exclusion (TRSE) means that transport issues have a fundamental impact on everyday life and limit the ability to fulfil everyday needs. This could mean being unable to access childcare or good job opportunities, facing poverty and financial hardship because of transport costs, or facing significant stress and anxiety from using the transport system as part of everyday life. TRSE is particularly likely to impact those on low incomes and in insecure work, those with disabilities and long-term health conditions, and those with caring or childcare responsibilities”.

# Climate Change and Environment



East Suffolk  
Community  
Partnerships

*Bringing ideas to life*



## Carbon Emissions

### Total carbon emissions

CO<sub>2</sub> per capita (2021)

# 0.4 tonnes

Source: BEIS

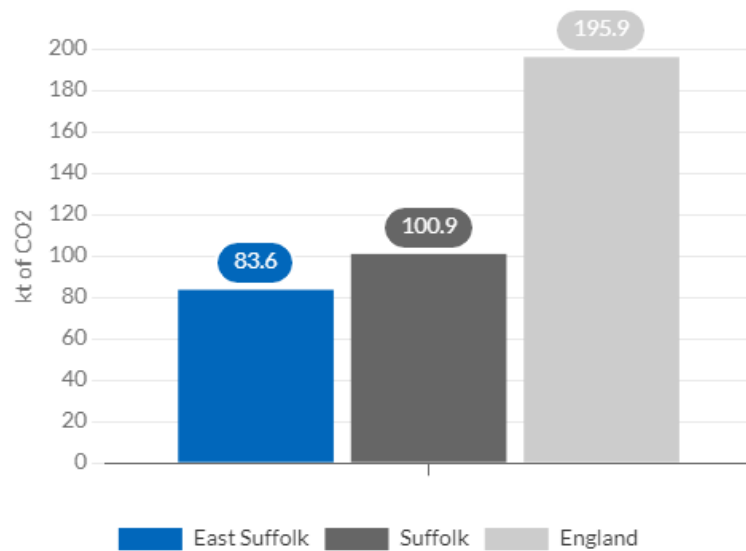


Emissions of carbon dioxide and other greenhouse gases from the production and use of energy across multiple sectors contribute in many ways to climate change. Local authority data for carbon emissions by sector are available in the section below.

These estimates of carbon emissions have been produced for the following categories:

- Industry (including electricity-related emissions)
- Commercial (including electricity-related emissions)
- Public sector (including electricity-related emissions)
- Domestic (including electricity-related emissions)
- Transport
- Land use, land use change and forestry (including removals of carbon dioxide from the atmosphere)

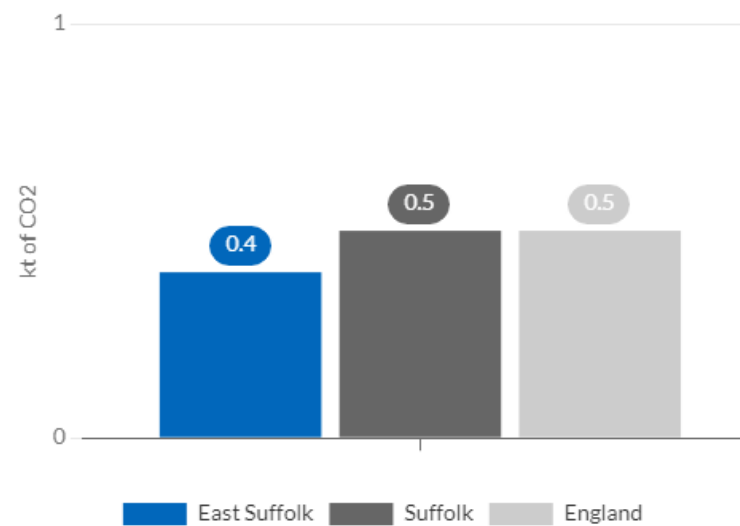
Total CO<sub>2</sub> emissions per km<sup>2</sup> (2021)



Source: BEIS



Total CO<sub>2</sub> emissions per person (2021)



Source: BEIS

