



Habitats Regulations Assessment Screening Statement

**Custom and Self-Build Housing
Supplementary Planning Document**

August 2023

Contents

1. Introduction	1
2. Protected sites covered by this report	3
3. Custom and Self-Build Housing Supplementary Planning Document.....	4
4. Other Plans and Projects	5
5. Assessment of likely significant effects of the Draft Custom and Self-Build Housing Supplementary Planning Document (SPD) on Habitat sites	7
6. Summary and conclusions	14
Appendix 1: Sources of background information	15
Appendix 2: Locations of Habitat sites	16
Habitat sites within 20km of the East Suffolk Council- Waveney Local Plan Area	16
Habitat sites within 20km of the East Suffolk Council- Suffolk Coastal Local Plan Area	20
Appendix 3: Relevant Habitat sites	24
Appendix 4: Natural England Consultation Response.....	37

1. Introduction

1.1 The Conservation of Habitats and Species Regulations (2017) (as amended) provide protection for sites that are of exceptional importance in respect of rare, endangered or vulnerable natural habitats and species. The network consists of Special Areas of Conservation (SACs) and Special Protection Areas (SPAs). Both types can also be referred to as European Sites. The National Planning Policy Framework (NPPF) states that Ramsar sites should be afforded the same level of protection and refers to SACs, SPAs and Ramsar sites as ‘Habitat Sites’.

1.2 The requirement to undertake Habitats Regulation Assessment (HRA) of plans and projects is set out in the Conservation of Habitats and Species Regulations (2017) (as amended).

1.3 Regulation 105 of the Conservation of Habitats and Species Regulations (2017) states:

‘Where a land use plan:

(a) Is likely to have a significant effect on a European site or a European offshore marine site (either alone or in combination with other plans or projects), and

(b) Is not directly connected with or necessary to the management of the site, The plan-making authority for that plan must, before the plan is given effect, make an appropriate assessment of the implications for the site in view of that site’s conservation objectives.’

1.4 The HRA is therefore undertaken in stages and should conclude whether or not a proposal or policy would adversely affect the integrity of any sites.

Stage 1: Determining whether a plan is likely to have a significant effect on a European site. This needs to take account of the likely impacts in combination with other relevant plans and projects. This assessment should be made using the precautionary principle. The screening assessment must reflect the outcomes of the 2018 judgement of the Court of Justice of the European

Union¹, which has ruled that where mitigation is necessary this must be identified through an Appropriate Assessment.

Stage 2: Carrying out Appropriate Assessment and ascertaining the effect on site integrity. The effects of the plan on the conservation objectives of sites should be assessed, to ascertain whether the plan has an adverse effect on the integrity of a European site.

Stage 3: Identifying mitigation measures and alternative solutions. The aim of this stage is to find ways of avoiding or significantly reducing adverse impacts, so that site integrity is no longer at risk. If there are still likely to be negative impacts, the option should be dropped, unless exceptionally it can be justified by imperative reasons of overriding public interest.

1.5 The draft Custom and Self-Build Housing Supplementary Planning Document (SPD) is being produced by East Suffolk Council. The SPD will apply to the whole of the East Suffolk Council area, outside of the Broads. This report considers whether there are likely to be significant effects on protected Habitat sites and where a full Appropriate Assessment may be required.

1.6 East Suffolk (outside of the Broads) is covered by two Local Plans, the East Suffolk Council - Suffolk Coastal Local Plan adopted September 2020 and the East Suffolk Council - Waveney Local Plan adopted March 2019.

1.7 Both Local Plans were subject to Habitats Regulations Assessment as part of their production. Where screening identified a likely significant effect, Appropriate Assessment was undertaken and the mitigation measures identified were incorporated within the Plans, resulting in conclusions that the plans will not lead to any adverse effects on Habitat sites within and in the vicinity of the (then) Suffolk Coastal and Waveney Districts. Both Appropriate Assessments identified recreational disturbance particularly from dog walkers as a significant effect. The Council has subsequently produced a Recreational Avoidance and Mitigation Strategy and requires payment towards mitigation from residential developments within 13km of the protected Habitat sites.

¹ C-323/17 – People over Wind, Peter Sweetman v Coillte Teoranta

2. Protected sites covered by this report

2.1 Sites included in this assessment are listed in Table 1. This includes all sites that are within 20km of East Suffolk. The locations of the sites are shown on maps in Appendix 2 and the Qualifying Features and Conservation Objectives of the sites are contained in Appendix 3, along with a summary of the pressures and threats as documented in the Appropriate Assessments for the Local Plans.

Table 1: Relevant Habitat sites

Name
Alde-Ore and Butley Estuaries SAC,
Alde-Ore Estuary SPA, Ramsar
Benacre to Easton Bavents SPA
Benacre to Easton Bavents Lagoons SAC
Breydon Water SPA, Ramsar
Broadland SPA, Ramsar
Deben Estuary SPA, Ramsar
Dew's Ponds SAC
Great Yarmouth North Denes SPA
Haisborough, Hammond and Winterton SAC
Minsmere to Walberswick Heaths & Marshes SAC
Minsmere – Walberswick SPA, Ramsar
Norfolk Valley Fens SAC
Outer Thames Estuary SPA
Orfordness – Shingle Street SAC
Sandlings SPA
Southern North Sea SAC
Staverton Park and The Thicks, Wantisden SAC
Stour and Orwell Estuaries SPA, Ramsar
The Broads SAC
Winterton-Horsey Dunes SAC

3. Custom and Self-Build Housing Supplementary Planning Document

- 3.1 This HRA report reviews the draft Custom and Self-Build Housing Supplementary Planning Document (SPD).
- 3.2 The draft Custom and Self-Build SPD provides information and advice to inform the consideration of planning applications that include custom and self-build housing. The guidance contained in the draft SPD will assist in the implementation of Local Plan and Neighbourhood Plan policies for East Suffolk. The SPD, when adopted, will be a material consideration in the determination of applications for planning permission. The SPD does not cover parts of East Suffolk that are within the Broads, for which the Broads Authority is the local planning authority.
- 3.3 The introduction to the SPD explains the policy context and purpose of the SPD, also included within this section is information about the Custom and Self-Build Register (national and local). This section is descriptive and has therefore not been included in the screening table in section 5 of this report. The SPD will also contain information on a number of case studies of custom and self-build housing good practice. Again, as this section is descriptive, it has not been included in the screening table in section 5 of this report.
- 3.4 Other chapters in the SPD provide detailed guidance on the different aspects of custom and self-build. These chapters cover a number of aspects and considerations, including: the definition of custom and self-build, Community Infrastructure Levy, affordable custom and self-build, design codes, plot passports, phasing, marketing, servicing, and neighborhood planning/ community led-housing.
- 3.5 The SPD also includes further guidance for those making planning applications and or/ securing planning permission, this guidance is contained in a number of appendices, alongside a glossary. These provide additional detail to support the main body of the SPD but do not in themselves introduce any new requirements and have therefore not been included in the screening table in section 5 of this report.

4. Other Plans and Projects

4.1 Regulation 105 of the Habitats Regulations requires consideration to be given to whether a Plan will have an effect either alone or in combination with other plans or projects.

4.2 As noted in the introduction, the other key plans are the Local Plans. The Local Plans set out the broad scale and distribution of development across the area of East Suffolk formerly covered by Suffolk Coastal District and Waveney District.

4.3 The draft Custom and Self-Build Supplementary Planning Document (SPD) adds specific detail to two policies within the Suffolk Coastal Local Plan and the Waveney Local Plan:

Suffolk Coastal Local Plan:

- SCLP5.9 (Self Build and Custom Build Housing)

Waveney Local Plan

- WLP8.3 (Self Build and Custom Build)

Other Local Plan policies such as SCLP5.4 (Housing in Clusters in the Countryside) and WLP8.7 (Small Scale Residential Development in the Countryside) also provide opportunities for custom or self-build housing.

4.4 A screening process considered each policy in the Suffolk Coastal and Waveney Local Plans and concluded whether significant effects were likely and if Appropriate Assessment was therefore needed. The Appropriate Assessments of the Suffolk Coastal and Waveney Local Plans considered the following themes:

- Recreation pressure,
- Air quality and traffic emissions,
- Biodiversity net gain,
- Urbanisation,
- Water quality, resources and treatment, and
- Flood risk and coastal erosion.

4.5 Mitigation measures were identified within the Appropriate Assessments and incorporated within both Local Plans, resulting in a conclusion that neither plan

would lead to any adverse effects on Habitat sites within and in the vicinity of the (then) Suffolk Coastal and Waveney Districts.

5. Assessment of likely significant effects of the Draft Custom and Self-Build Housing Supplementary Planning Document (SPD) on Habitat sites

- 5.1 Table 3 below considers each relevant section of the draft Custom and Self-Build Housing Supplementary Planning Document (SPD) in relation to whether there is potential for a likely significant effect on protected Habitat sites. This constitutes Stage 1 as set out under paragraph 1.4 above. Consideration is given to the characteristics and location of the protected sites. The relevant sections are considered within the context of the Local Plan policies from which they hang and which have themselves been subject to Habitats Regulations Assessment, as set out in section 4 above.

Table 3: Likely significant effects of the Draft Custom and Self-Build Housing Supplementary Planning Document

Chapter	Assessment of potential impact on Habitat sites	Habitat sites that could possibly be affected	Likely significant effect identified	AA needed?
What is Custom and Self-Build Housing?	This chapter set out the legislative background to custom and self-build housing and defines many of the terms associated with this type of development. The chapter clarifies the requirements for custom and self-build housing. The guidance contained here does not in itself promote new development beyond what is required by Local Plan policy and will therefore not lead to likely significant effects on Habitat Sites.	None	None	No
Community Infrastructure Levy	This chapter clarifies the Community Infrastructure Levy (CIL) requirements associated with custom and self-build housing and explains that the CIL Regulations 2010 (as amended) provide for a CIL exemption for self-build housing. The chapter provides further detail for those applying for a CIL self-build exemption. The guidance contained here does not in itself promote new	None	None	No

Chapter	Assessment of potential impact on Habitat sites	Habitat sites that could possibly be affected	Likely significant effect identified	AA needed?
	development beyond what is required by Local Plan policy and will therefore not lead to likely significant effects on Habitat Sites.			
Affordable Custom and Self-Build	<p>This chapter explains that custom and self-build housing proposals will be required to deliver a policy compliant affordable housing mix, as set out in policies SCLP5.10 (Affordable Housing on Residential Developments) and WLP8.2 (Affordable Housing), including the Government’s requirement for 25% of affordable housing to be First Homes. The chapter provides further, more detailed, guidance relating to the Council’s expectations when schemes trigger the affordable housing requirement.</p> <p>The guidance in this chapter does not in itself promote new development beyond what is required by Local Plan policy and will therefore not lead to likely significant effects on Habitat Sites.</p>	None	None	No
Design Codes	This chapter explains that the Council will require a design code to be agreed for developments that include 5 or more	None	None	No

Chapter	Assessment of potential impact on Habitat sites	Habitat sites that could possibly be affected	Likely significant effect identified	AA needed?
	<p>custom and self-build homes and provides more detailed advice for applicants who will need to comply with this requirement.</p> <p>The guidance in this chapter does not in itself promote new development beyond what is required by Local Plan policy and will therefore not lead to likely significant effects on Habitat Sites.</p>			
Plot Passports	<p>This chapter explains what plot passports are and what basic information should be provided within them, which includes:</p> <ul style="list-style-type: none"> - Plot location, - Plot size and shape, - Any design and development parameters established in the design code (if any), - Likely ground conditions, - Location of servicing connection, - CIL exemption, and - Plot price. <p>The guidance aims to support the preparation and consideration of</p>	None	None	No

Chapter	Assessment of potential impact on Habitat sites	Habitat sites that could possibly be affected	Likely significant effect identified	AA needed?
	applications, and does not in itself promote new development and will therefore not lead to likely significant effects on Habitat Sites.			
Phasing	<p>This chapter sets out the Council’s expectations regarding the phasing of the delivery of custom and self-build housing, including when a phasing plan will be required.</p> <p>The guidance aims to support the preparation and consideration of applications and does not in itself promote new development and will therefore not lead to likely significant effects on Habitat Sites.</p>	None	None	No
Marketing Strategy	This chapter sets out the Council’s expectations regarding the marketing of custom and self-build developments to ensure that those on the Council’s custom and self-build housing register area notified about the opportunity to purchase a custom and self-build plot.	None	None	No

Chapter	Assessment of potential impact on Habitat sites	Habitat sites that could possibly be affected	Likely significant effect identified	AA needed?
	The guidance aims to support applicants and does not in itself promote new development and will therefore not lead to likely significant effects on Habitat Sites.			
Serviced Plots	<p>This chapter explains the legislative requirements in relation to provision of serviced plots and clarifies that custom and self-build plots must be serviced for electricity, water, and waste water and have access to a public highway. It will also be expected that custom and self-build housing also be serviced for telecommunications.</p> <p>The guidance aims to support applicants and does not in itself promote new development and will therefore not lead to likely significant effects on Habitat Sites.</p>	None	None	No
Neighbourhood Planning/ Community Led-housing	This section will provide additional guidance as to how neighbourhood planning and community-led housing groups can best facilitate the delivery of custom and self-build housing.	None	None	No

Chapter	Assessment of potential impact on Habitat sites	Habitat sites that could possibly be affected	Likely significant effect identified	AA needed?
	The guidance in this chapter will not in itself promote new development beyond what is required by Local Plan policy and will therefore not lead to likely significant effects on Habitat Sites.			

6. Summary and conclusions

- 6.1 The draft Custom and Self-Build Housing Supplementary Planning Document (SPD) provides additional guidance to inform the determination of planning applications alongside the Waveney and Suffolk Coastal Local Plans. The draft Custom and Self-Build Housing SPD provides further guidance and advice concerning the delivery of custom and self-build housing in East Suffolk. The guidance contained in the draft SPD will assist in the implementation of Local Plan and Neighbourhood Plan policies for East Suffolk relating to custom and self-build housing. The SPD, when adopted, will be a material consideration in the determining of applications for planning permission.
- 6.2 Implementation of the Custom and Self-Build Housing Supplementary Planning Document will not lead to likely significant effects on protected Habitat sites.
- 6.3 Natural England were consulted on a draft of this Screening Statement as statutory nature conservation body and they agreed with the conclusions set out above. Their response can be found in Appendix 4.



Signed:

Dated: 22nd August 2023

Andrea McMillan
Planning Policy and Delivery Manager
East Suffolk Council

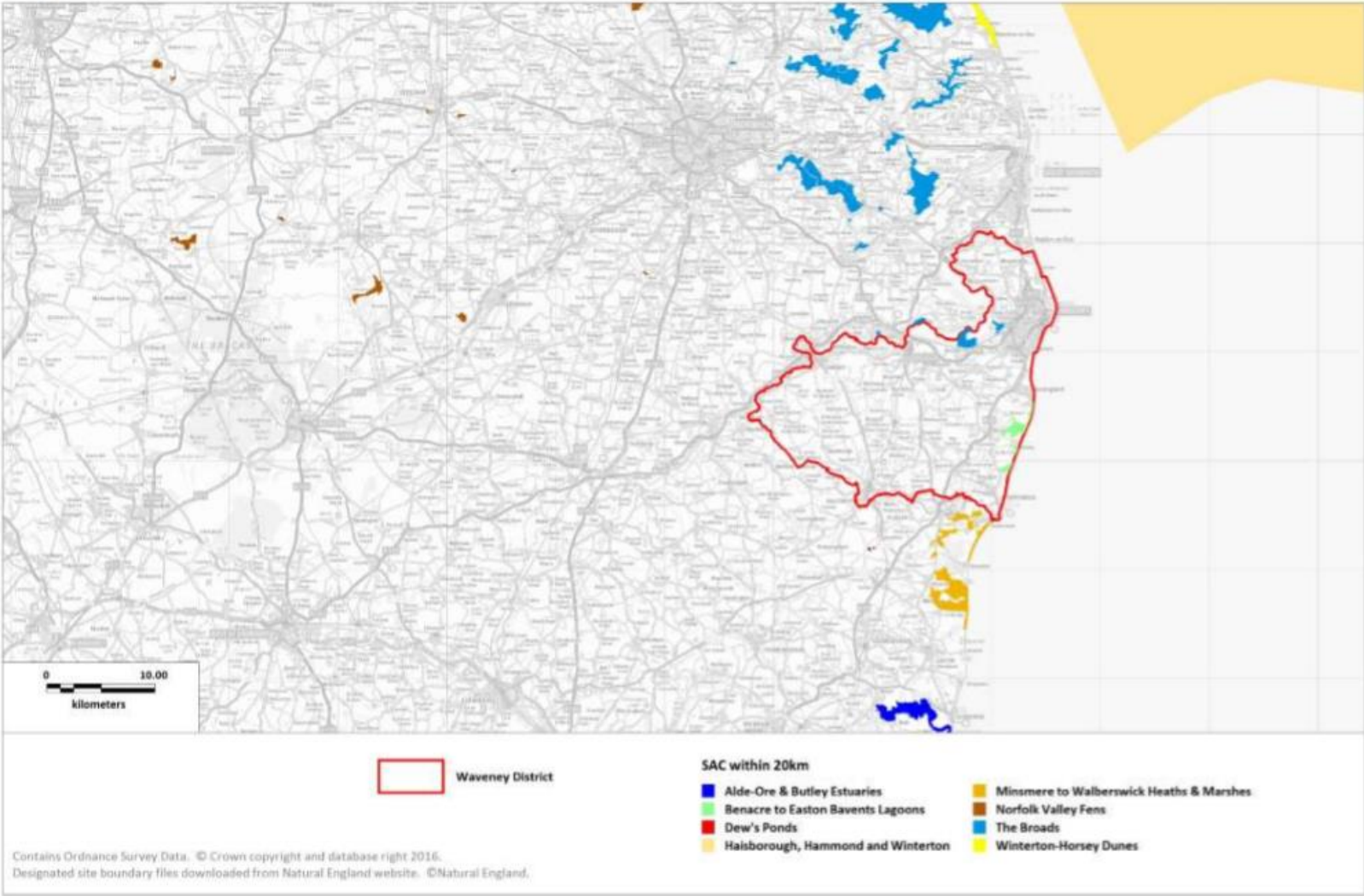
Appendix 1: Sources of background information

- East Suffolk Council – Suffolk Coastal Local Plan (September 2020)
- East Suffolk Council – Waveney Local Plan (March 2019)
- Habitats Regulations Assessment for the Suffolk Coastal Local Plan at Final Draft Plan stage (incorporating Main Modifications) (May 2020)
- The Habitats Regulations Assessment of the Waveney Local Plan (December 2018)
- Habitats Regulations Assessment Recreational Disturbance Avoidance and Mitigation Strategy for Ipswich Borough, Babergh District, Mid Suffolk District and East Suffolk Councils (May 2019)

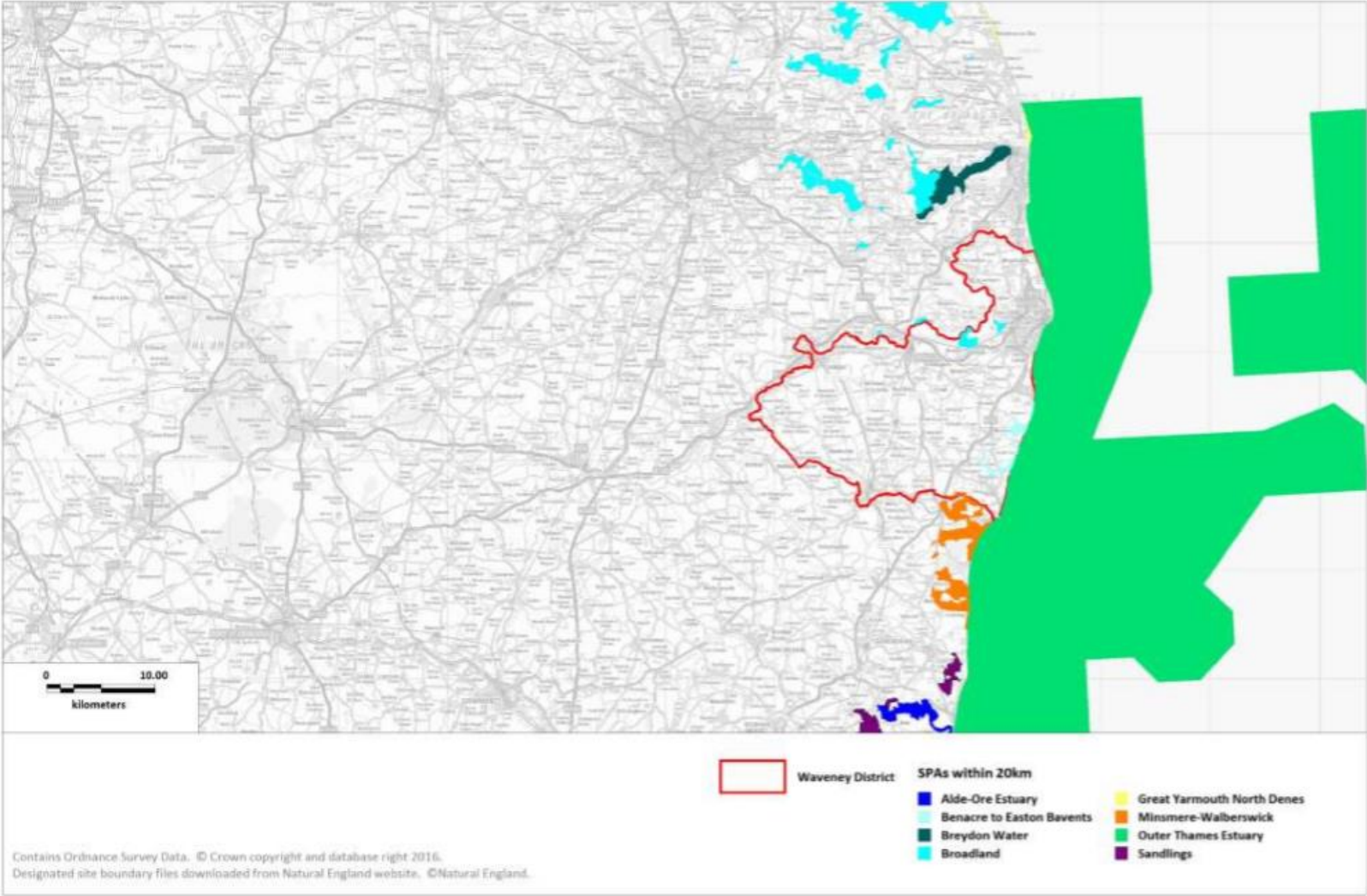
Appendix 2: Locations of Habitat sites

Habitat sites within 20km of the East Suffolk Council-
Waveney Local Plan Area

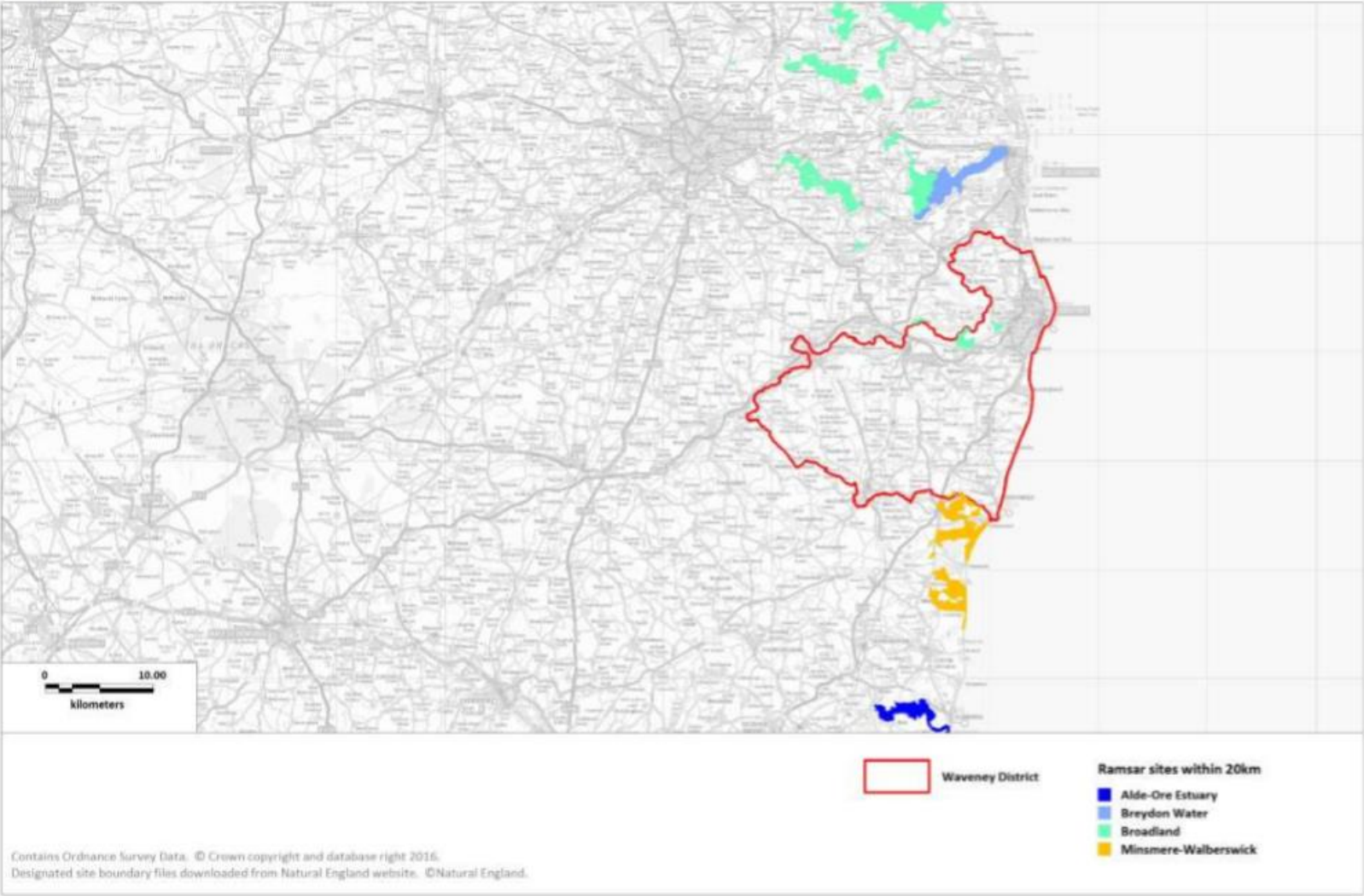
Map 1: SACs



Map 2: SPAs

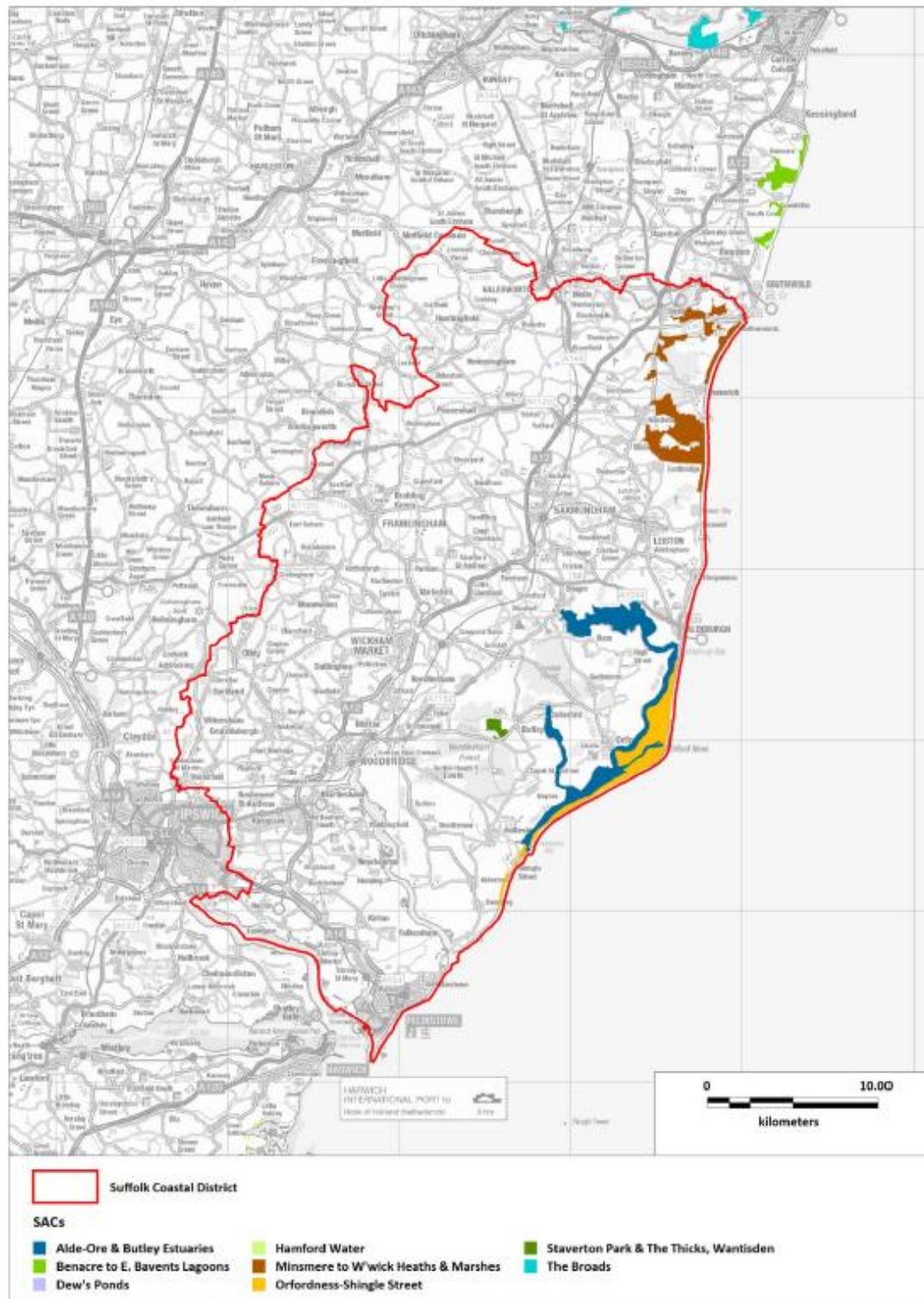


Map 3: Ramsar Sites



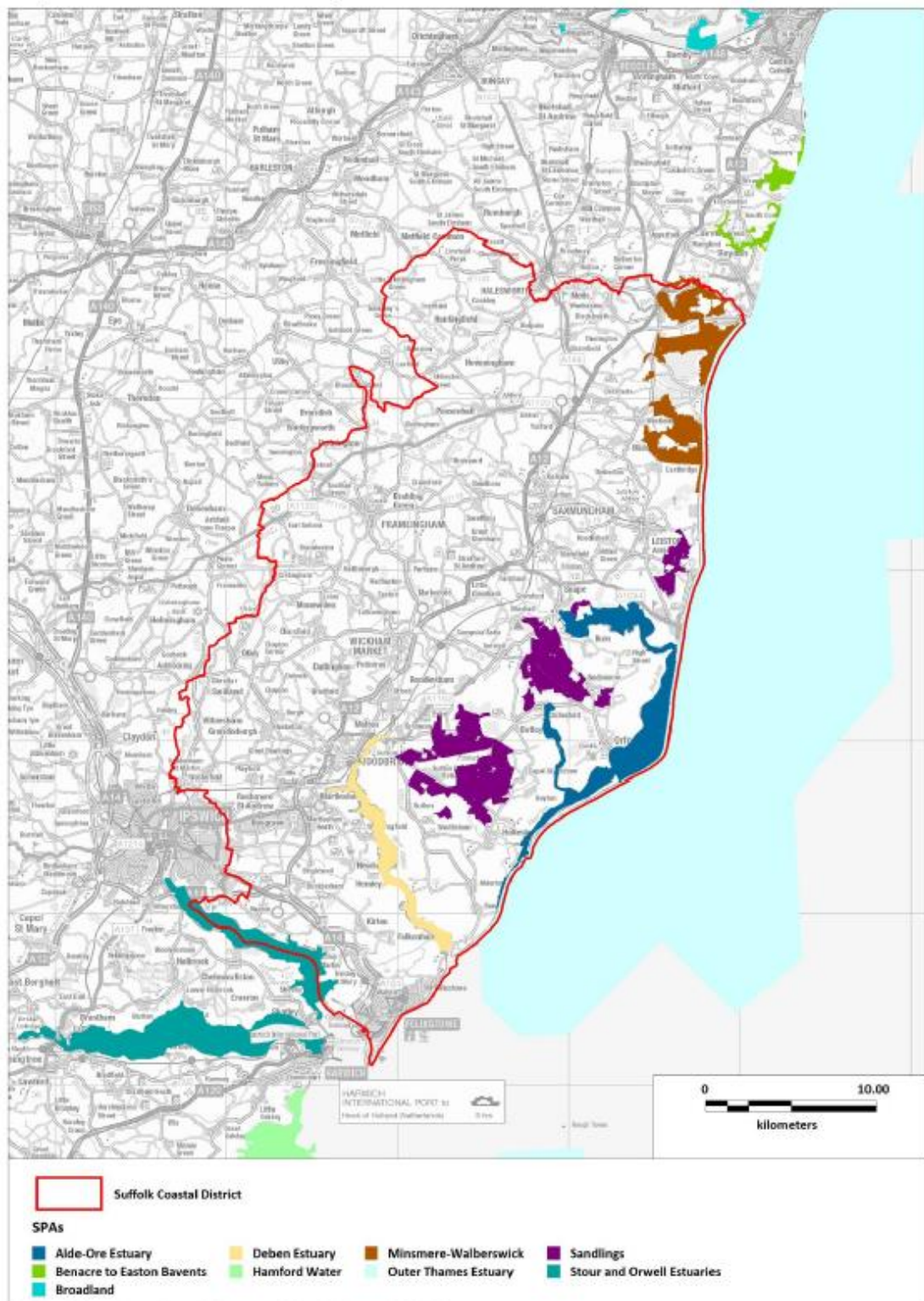
Habitat sites within 20km of the East Suffolk Council- Suffolk Coastal Local Plan Area

Map 1: SAC sites where boundary within 20km of Suffolk Coastal District



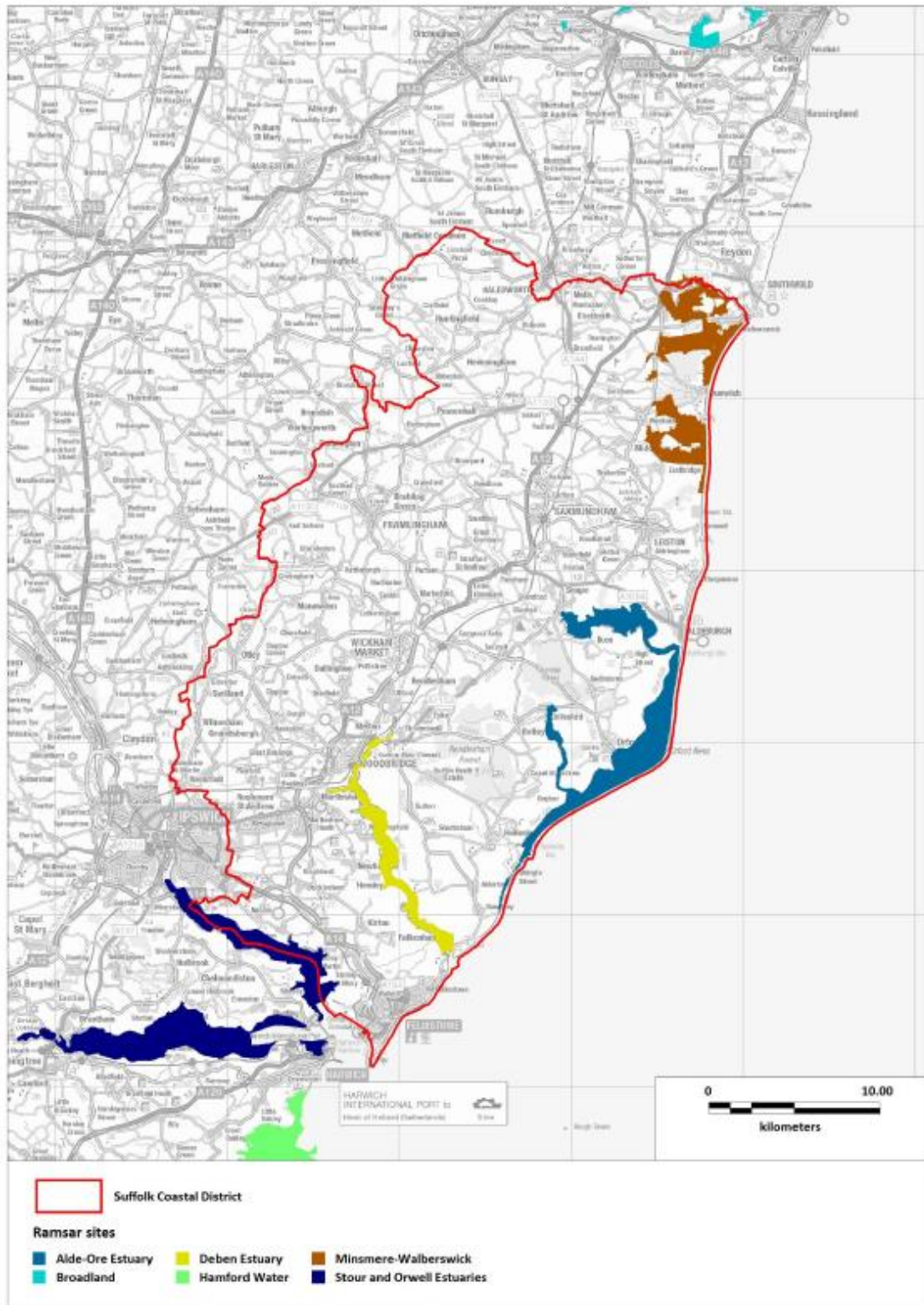
Contains Ordnance Survey Data. © Crown copyright and database right 2017.
 Contains Natural England information © Natural England and Database Right. All rights Reserved.

Map 2: SPA sites where boundary within 20km of Suffolk Coastal District



Contains Ordnance Survey Data. © Crown copyright and database right 2017.
 Contains Natural England Information © Natural England and Database Right. All rights Reserved.

Map 3: Ramsar sites where boundary within 20km of Suffolk Coastal District



Contains Ordnance Survey Data, © Crown copyright and database right 2017.
Contains Natural England Information © Natural England and Database Right. All rights Reserved.

Appendix 3: Relevant Habitat sites

Name	Qualifying features	Conservation Objectives	Pressure and threats (as summarised in the Habitats Regulations Assessment for the Suffolk Coastal Local Plan at Final Draft Plan Stage (December 2018))
Special Areas of Conservation			
Alde-Ore and Butley Estuaries	H1130: Estuaries H1140: Mudflats and sandflats not covered by seawater at low tide; Intertidal mudflats and sandflats H1330: Atlantic salt meadows	Ensure that the integrity of the site is maintained or restored as appropriate, and ensure that the site contributes to achieving the Favourable Conservation Status of its Qualifying Features by maintaining or restoring: The extent and distribution of qualifying natural habitats; The structure and function (including typical species) of qualifying natural habitats; The supporting processes on which qualifying natural habitats rely.	Hydrological changes, public access/disturbance, inappropriate coastal management, coastal squeeze, inappropriate pest control, changes in species distributions, invasive species, air pollution, fisheries (commercial marine and estuarine) (Alde-Ore and Butley Estuaries SAC and Alde-Ore SPA)
Benacre to Easton Barents Lagoons	H1150# Coastal lagoons, A195(B) <i>Sterna albifrons</i> : Little tern A021(B) <i>Botaurus stellaris</i> : Great bittern A081(B) <i>Circus aeruginosus</i> : Eurasian marsh harrier	Ensure that the integrity of the site is maintained or restored as appropriate, and ensure that the site contributes to achieving the Favourable Conservation Status of its Qualifying Features, by maintaining or restoring; The extent and distribution of qualifying natural habitats,	Public access/disturbance, water pollution, physical modification, changes in species distributions, fisheries (marine and estuarine).

		The structure and function (including typical species) of qualifying natural habitats, and, The supporting processes on which qualifying natural habitats rely.	
Dew’s Ponds	S1166 Triturus cristatus: Great crested newt	Ensure that the integrity of the site is maintained or restored as appropriate, and ensure that the site contributes to achieving the Favourable Conservation Status of its Qualifying Features, by maintaining or restoring; The extent and distribution of the habitats of qualifying species, The structure and function of the habitats of qualifying species, The supporting processes on which the habitats of qualifying species rely, The populations of qualifying species, and, The distribution of qualifying species within the site.	None identified.
Haisborough, Hammond and Winterton	H1110 Sandbanks which are slightly covered by sea water all the time H1170 Reefs	The Conservation Objective for the Haisborough, Hammond and Winterton cSAC is to maintain the Annex I Sandbanks which are slightly covered by seawater all the time in Favourable Condition, and maintain or restore the Annex I reefs in Favourable Condition.	Feature location/extent/condition unknown, fisheries (commercial marine and estuarine)
Minsmere to Walberswick Heaths and Marshes	H4030 European dry heaths H1210 Annual vegetation of drift lines	Ensure that the integrity of the site is maintained or restored as appropriate, and ensure that the site contributes to	Coastal squeeze, public access/disturbance, changes in species distributions, invasive species,

	<p>H1220 Perennial vegetation of stony banks A052(B) <i>Anas crecca</i>: Eurasian teal A021(B) <i>Botaurus stellaris</i>: Great bittern A081(B) <i>Circus aeruginosus</i>: Eurasian marsh harrier A082(NB) <i>Circus cyaneus</i>: Hen harrier A224(B) <i>Caprimulgus europaeus</i>: European nightjar A056(B) <i>Anas clypeata</i>: Northern shoveler A056(NB) <i>Anas clypeata</i>: Northern shoveler A051(B) <i>Anas strepera</i>: Gadwall A051(NB) <i>Anas strepera</i>: Gadwall A132(B) <i>Recurvirostra avosetta</i>: Pied avocet A195(B) <i>Sterna albifrons</i>: Little tern A394(NB) <i>Anser albifrons albifrons</i>: Greater white-fronted goose</p>	<p>achieving the Favourable Conservation Status of its Qualifying Features, by maintaining or restoring; The extent and distribution of qualifying natural habitats and habitats, The structure and function (including typical species) of qualifying natural habitats, and, The supporting processes on which qualifying natural habitats rely.</p>	<p>inappropriate pest control, air pollution, water pollution, deer, fisheries (commercial marine and estuarine)</p>
<p>Norfolk Valley Fens</p>	<p>H7210# Calcareous fens with <i>Cladium mariscus</i> and species of the <i>Caricion davallianae</i> S1014 <i>Vertigo angustior</i>: Narrow-mouthed whorl snail</p>	<p>Ensure that the integrity of the site is maintained or restored as appropriate, and ensure that the site contributes to achieving the Favourable Conservation Status of its Qualifying Features, by</p>	<p>Inappropriate water levels, inappropriate scrub control, hydrological changes, water pollution, inappropriate cutting/mowing, water abstraction, undergrazing, overgrazing, invasive species, change in</p>

	<p>H6210# Semi-natural dry grasslands and scrubland facies: on calcareous substrates (Festuco-Brometalia) S1016 Vertigo moulinsiana: Desmoulin`s whorl snail H4030 European dry heaths H7230 Alkaline fens H6410 Molinia meadows on calcareous, peaty or clayey-silt-laden soils (Molinion caeruleae) H91E0# Alluvial forests with Alnus glutinosa and Fraxinus excelsior (AlnoPadion, Alnion incanae, Salicion albae) H4010 Northern Atlantic wet heaths with Erica tetralix</p>	<p>maintaining or restoring; The extent and distribution of qualifying natural habitats and habitats of qualifying Species; The structure and function (including typical species) of qualifying natural habitats; The structure and function of the habitats of qualifying species; The supporting processes on which qualifying natural habitats and the habitats of qualifying species rely; The populations of qualifying species, and, The distribution of qualifying species within the site.</p>	<p>land management, changes in species distributions, air pollution.</p>
<p>Orfordness – Shingle Street</p>	<p>H1150: Coastal Lagoons H1210: Annual vegetation of drift lines H1220: Perennial vegetation of stony banks; Coastal shingle vegetation outside the reach of waves</p>	<p>Ensure that the integrity of the site is maintained or restored as appropriate, and ensure that the site contributes to achieving the Favourable Conservation Status of its Qualifying Features by maintaining or restoring: The extent and distribution of qualifying natural habitats; The structure and function (including typical species) of qualifying natural habitats; and The supporting processes on which qualifying natural habitats rely.</p>	<p>Not identified in Suffolk Coastal Final Draft Local Plan HRA.</p>

Southern North Sea	Harbour Porpoise (<i>phocoena phocoena</i>)	To ensure that the integrity of the site is maintained and that it makes an appropriate contribution to maintaining Favourable Conservation Status (FCS) for harbour porpoise in UK waters.	N/A
Staverton Park and The Thicks, Wantisden	H9190: Old acidophilous oak woods with <i>Quercus robur</i> on sandy plains; Dry oak-dominated woodland.	Ensure that the integrity of the site is maintained or restored as appropriate, and ensure that the site contributes to achieving the Favourable Conservation Status of its Qualifying Features by maintaining or restoring: The extent and distribution of qualifying natural habitats; The structure and function (including typical species) of qualifying natural habitats; and The supporting processes on which qualifying natural habitats rely.	Woodland management, disease, atmospheric pollution.
The Broads	H7210# Calcareous fens with <i>Cladium mariscus</i> and species of the <i>Caricion davallianae</i> S1016 <i>Vertigo moulinsiana</i> : Desmoulin's whorl snail H7230 Alkaline fens H6410 <i>Molinia</i> meadows on calcareous, peaty or clayey-silt-laden soils (<i>Molinia caerulea</i>) H91E0# Alluvial forests with <i>Alnus glutinosa</i> and <i>Fraxinus excelsior</i>	Ensure that the integrity of the site is maintained or restored as appropriate, and ensure that the site contributes to achieving the Favourable Conservation Status of its Qualifying Features, by maintaining or restoring; The extent and distribution of qualifying natural habitats and habitats of qualifying species, The structure and function (including typical species) of qualifying natural habitats,	Water pollution, climate change, invasive species, siltation, inappropriate water levels, hydrological changes, water abstraction, change in land management, inappropriate ditch management, inappropriate scrub control, changes in species distributions, public access/disturbance, undergrazing, drainage, direct impact from 3rd party

	(Alno-Padion, Alnion incanae, Salicion albae) H7140 Transition mires and quaking bogs H3140 Hard oligo-mesotrophic waters with benthic vegetation of Chara spp H3150 Natural eutrophic lakes with Magnopotamion or Hydrocharition-type vegetation S1355 Lutra lutra: Otter S1903 Liparis loeselii: Fen orchid S4056 Anisus vorticulus: Little ramshorn whirlpool snail	The structure and function of the habitats of qualifying species, The supporting processes on which qualifying natural habitats and the habitats of qualifying species rely, The populations of qualifying species, and, The distribution of qualifying species within the site.	
Winterton - Horsey Dunes	H2110 Embryonic shifting dunes H2120 Shifting dunes along the shoreline with Ammophila arenaria ("white dunes") H2150# Atlantic decalcified fixed dunes (Calluno-Ulicetea) H2190 Humid dune slacks, A195(B) Sterna albifrons: Little Tern	Ensure that the integrity of the site is maintained or restored as appropriate, and ensure that the site contributes to achieving the Favourable Conservation Status of its Qualifying Features by maintaining or restoring: The extent and distribution of qualifying natural habitats; The structure and function (including typical species) of qualifying natural habitats; and The supporting processes on which qualifying natural habitats rely.	Inappropriate coastal management, coastal squeeze, public access/ disturbance, hydrological changes, inappropriate scrub control, inappropriate pest control, invasive species, undergrazing, air pollution.
Special Protection Areas			
Alde-Ore Estuary (also Ramsar site)	A081: Eurasian marsh harrier (breeding)	Ensure that the integrity of the site is maintained or restored as appropriate,	Hydrological changes, public access/disturbance, inappropriate coastal

	<p>A132: Pied avocet (non-breeding) A132: Pied avocet (breeding) A151: Ruff (non-breeding) A162: Common redshank (non-breeding) A183: Lesser black-backed gull (breeding) A191: Sandwich tern (breeding) A195: Little tern (breeding)</p>	<p>and ensure that the site contributes to achieving the aims of the Wild Birds Directive, by maintaining or restoring: The extent and distribution of the habitats of the qualifying features; The structure and function of the habitats of the qualifying features; The supporting processes on which the habitats of the qualifying features rely; The population of each of the qualifying features; and The distribution of the qualifying features within the site.</p>	<p>management, coastal squeeze, inappropriate pest control, changes in species distributions, invasive species, air pollution, fisheries (commercial marine and estuarine) (Alde-Ore and Butley Estuaries SAC and Alde-Ore SPA)</p>
<p>Benacre to Easton Barents</p>	<p>H1150# Coastal lagoons, A195(B) Sterna albifrons: Little tern A021(B) Botaurus stellaris: Great bittern A081(B) Circus aeruginosus: Eurasian marsh harrier</p>	<p>Ensure that the integrity of the site is maintained or restored as appropriate, and ensure that the site contributes to achieving the aims of the Wild Birds Directive, by maintaining or restoring: The extent and distribution of the habitats of the qualifying features, The structure and function of the habitats of the qualifying features, The supporting processes on which the habitats of the qualifying features rely, The population of each of the qualifying features, and, The distribution of the qualifying features within the site.</p>	<p>Public access/disturbance, water pollution, physical modification, changes in species distributions, fisheries (marine and estuarine).</p>

<p>Breydon Water (also Ramsar Site)</p>	<p>Waterbird assemblage A037(NB) Cygnus columbianus bewickii: Bewick swan A132(NB) Recurvirostra avosetta: Pied avocet A140(NB) Pluvialis apricaria : European golden plover A142(NB) Vanellus vanellus: Northern lapwing A151(NB) Philomachus pugnax: Ruff A193(B) Sterna hirundo: Common tern</p>	<p>Ensure that the integrity of the site is maintained or restored as appropriate, and ensure that the site contributes to achieving the aims of the Wild Birds Directive, by maintaining or restoring; The extent and distribution of the habitats of the qualifying features, The structure and function of the habitats of the qualifying features, The supporting processes on which the habitats of the qualifying features rely, The population of each of the qualifying features, and, The distribution of the qualifying features within the site.</p>	<p>Shooting/scaring, change in land management, public access/disturbance, hydrological changes, fisheries (marine and estuarine).</p>
<p>Broadlands (also Ramsar site)</p>	<p>H7210# Calcareous fens with Cladium mariscus and species of the Caricion davallianae S1016 Vertigo moulinsiana: Desmoulin`s whorl snail H7230 Alkaline fens H6410 Molinia meadows on calcareous, peaty or clayey-silt-laden soils (Molinion caeruleae) H91E0# Alluvial forests with Alnus glutinosa and Fraxinus excelsior (Alno-Padion, Alnion incanae, Salicion albae) H7140 Transition mires and quaking bogs</p>	<p>Ensure that the integrity of the site is maintained or restored as appropriate, and ensure that the site contributes to achieving the Favourable Conservation Status of its Qualifying Features, by maintaining or restoring; The extent and distribution of qualifying natural habitats and habitats of qualifying species, The structure and function (including typical species) of qualifying natural habitats, The structure and function of the habitats of qualifying species,</p>	<p>Water pollution, climate change, invasive species, siltation, inappropriate water levels, hydrological changes, water abstraction, change in land management, inappropriate ditch management, inappropriate scrub control, changes in species distributions, public access/disturbance, undergrazing, drainage, direct impact from 3rd party</p>

	<p>H3140 Hard oligo-mesotrophic waters with benthic vegetation of Chara spp H3150 Natural eutrophic lakes with Magnopotamion or Hydrocharition-type vegetation S1355 Lutra lutra: Otter S1903 Liparis loeselii: Fen orchid S4056 Anisus vorticulus: Little ramshorn whirlpool snail</p>	<p>The supporting processes on which qualifying natural habitats and the habitats of qualifying species rely, The populations of qualifying species, and, The distribution of qualifying species within the site.</p>	
<p>Deben Estuary (also Ramsar site)</p>	<p>A046a: Dark bellied brent goose (non-breeding) A132: Pied avocet (non-breeding)</p>	<p>Ensure that the integrity of the site is maintained or restored as appropriate, and ensure that the site contributes to achieving the aims of the Wild Birds Directive, by maintaining or restoring: The extent and distribution of the habitats of the qualifying features; The structure and function of the habitats of the qualifying features; The supporting processes on which the habitats of the qualifying features rely; The population of each of the qualifying features; and The distribution of the qualifying features within the site.</p>	<p>Coastal squeeze, disturbance to birds, water and air pollution.</p>
<p>Great Yarmouth North Denes</p>	<p>A195 Sterna albifrons; Little tern (Breeding)</p>	<p>Ensure that the integrity of the site is maintained or restored as appropriate, and ensure that the site contributes to</p>	<p>Inappropriate coastal management, coastal squeeze, public access/disturbance, hydrological changes, inappropriate scrub control, inappropriate</p>

		<p>achieving the aims of the Wild Birds Directive, by maintaining or restoring; The extent and distribution of the habitats of the qualifying features, The structure and function of the habitats of the qualifying features, The supporting processes on which the habitats of the qualifying features rely, The population of each of the qualifying features, and, The distribution of the qualifying features within the site.</p>	<p>pest control, invasive species, undergrazing, air pollution.</p>
Outer Thames Estuary	<p>A001: Red-throated Diver (Non-breeding) A195: Common Tern (Breeding) A193: Little Tern (Breeding)</p>	<p>Ensure that the integrity of the site is maintained or restored as appropriate, and ensure that the site contributes to achieving the aims of the Wild Birds Directive, by maintaining or restoring: The extent and distribution of the habitats of the qualifying features; The structure and function of the habitats of the qualifying features; The supporting processes on which the habitats of the qualifying features rely; The population of each of the qualifying features; and The distribution of the qualifying features within the site.</p>	<p>Not identified in Suffolk Coastal Final Draft Local Plan HRA. SIP identifies fisheries.</p>
Minsmere to Walberswick (also Ramsar site)	<p>H4030 European dry heaths H1210 Annual vegetation of drift lines</p>	<p>Ensure that the integrity of the site is maintained or restored as appropriate, and ensure that the site contributes to</p>	<p>Coastal squeeze, public access/disturbance, changes in species distributions, invasive species,</p>

	<p>H1220 Perennial vegetation of stony banks A052(B) <i>Anas crecca</i>: Eurasian teal A021(B) <i>Botaurus stellaris</i>: Great bittern A081(B) <i>Circus aeruginosus</i>: Eurasian marsh harrier A082(NB) <i>Circus cyaneus</i>: Hen harrier A224(B) <i>Caprimulgus europaeus</i>: European nightjar A056(B) <i>Anas clypeata</i>: Northern shoveler A056(NB) <i>Anas clypeata</i>: Northern shoveler A051(B) <i>Anas strepera</i>: Gadwall A051(NB) <i>Anas strepera</i>: Gadwall A132(B) <i>Recurvirostra avosetta</i>: Pied avocet A195(B) <i>Sterna albifrons</i>: Little tern A394(NB) <i>Anser albifrons albifrons</i>: Greater white-fronted goose</p>	<p>achieving the aims of the Wild Birds Directive, by maintaining or restoring; The extent and distribution of the habitats of the qualifying features, The structure and function of the habitats of the qualifying features, The supporting processes on which the habitats of the qualifying features rely, The population of each of the qualifying features, and, The distribution of the qualifying features within the site.</p>	<p>inappropriate pest control, air pollution, water pollution, deer, fisheries (commercial marine and estuarine)</p>
<p>Outer Thames Estuary</p>	<p>A001 (W) <i>Gavia stellate</i> Red-throated Diver A195 (B) <i>Sterna hirundo</i> Common Tern</p>	<p>Ensure that the integrity of the site is maintained or restored as appropriate, and ensure that the site contributes to achieving the aims of the Wild Birds Directive, by maintaining or restoring;</p>	<p>Not identified in Suffolk Coastal Final Draft Local Plan HRA. SIP identifies fisheries.</p>

	A193 (B) <i>Sternula albifrons</i> Little Tern	The extent and distribution of the habitats of the qualifying features, The structure and function of the habitats of the qualifying features, The supporting processes on which the habitats of the qualifying features rely, The population of each of the qualifying features, and, The distribution of the qualifying features within the site.	
Sandlings	A224: European nightjar (breeding) A246: Woodlark (breeding)	Ensure that the integrity of the site is maintained or restored as appropriate, and ensure that the site contributes to achieving the aims of the Wild Birds Directive, by maintaining or restoring: The extent and distribution of the habitats of the qualifying features; The structure and function of the habitats of the qualifying features; The supporting processes on which the habitats of the qualifying features rely; The population of each of the qualifying features; and The distribution of the qualifying features within the site.	Changes in species distributions, inappropriate scrub control, deer, air pollution, public access/disturbance.
Stour and Orwell Estuaries (also Ramsar site)	A046a: Dark bellied brent goose (non-breeding) A054: Northern pintail (non-breeding) A132: Pied avocet (non-breeding)	Ensure that the integrity of the site is maintained or restored as appropriate, and ensure that the site contributes to achieving the aims of the Wild Birds Directive, by maintaining or restoring:	Coastal squeeze, disturbance to birds, air pollution and new development.

	<p>A141: Grey plover (non-breeding) A143: Red knot (non-breeding) A149: Dunlin (non-breeding) A156: Black-tailed godwit (non-breeding) A162: Common redshank (non-breeding) Waterbird assemblage</p>	<p>The extent and distribution of the habitats of the qualifying features; The structure and function of the habitats of the qualifying features; The supporting processes on which the habitats of the qualifying features rely; The population of each of the qualifying features; and The distribution of the qualifying features within the site.</p>	
--	---	---	--

Appendix 4: Natural England Consultation Response

Date: 27 July 2023
Our ref: 439796
Your ref: Custom & Self Build Housing SPD – SEA HRA Screening



Ms Laura Mundy
Policy and Delivery
East Suffolk Council
Planning Team at Riverside
4 Canning Road
Lowestoft NR33 0EQ.

Hornbeam House
Crewe Business Park
Electra Way
Crewe
Cheshire
CW1 8GJ

BY EMAIL ONLY - [REDACTED]

T 0300 060 3900

Dear Ms Mundy

Custom and Self Build Housing Supplementary Planning Document – draft SEA and HRA Screening

Thank you for your consultation request on the above dated and received by Natural England on 23rd June 2023.

Natural England is a non-departmental public body. Our statutory purpose is to ensure that the natural environment is conserved, enhanced, and managed for the benefit of present and future generations, thereby contributing to sustainable development.

Screening Request: Strategic Environmental Assessment

It is our advice, on the basis of the material supplied with the consultation, that, in so far as our strategic environmental interests (including but not limited to statutory designated sites, landscapes and protected species, geology and soils) are concerned, that there are unlikely to be significant environmental effects from the proposed plan.

Natural England do not feel that an SEA is necessary.

We have checked our records and based on the information provided, we can confirm that in our view the proposals contained within the plan will not have significant effects on sensitive sites that Natural England has a statutory duty to protect.

We are not aware of significant populations of protected species which are likely to be affected by the policies / proposals within the plan. It remains the case, however, that the responsible authority should provide information supporting this screening decision, sufficient to assess whether protected species are likely to be affected.

Notwithstanding this advice, Natural England does not routinely maintain locally specific data on all potential environmental assets. As a result the responsible authority should raise environmental issues that we have not identified on local or national biodiversity action plan species and/or habitats, local wildlife sites or local landscape character, with its own ecological and/or landscape advisers, local record centre, recording society or wildlife body on the local landscape and biodiversity receptors that may be affected by this plan, before determining whether an SA/SEA is necessary.

Please note that Natural England reserves the right to provide further comments on the environmental assessment of the plan beyond this SEA/SA screening stage, should the responsible authority seek our views on the scoping or environmental report stages. This includes any third party appeal against any screening decision you may make.

For any new consultations, or to provide further information on this consultation please send your correspondences to [REDACTED]

Yours sincerely

Sharon Jenkins
Operations Delivery
Consultations Team
Natural England

Habitats Regulations Assessment Screening Statement
Custom and Self-Build Housing SPD– August 2023

Date: 15 August 2023
Our ref: 439796
Your ref: Custom & Self Build SPD – SEA HRA



Mr Anthony Taylor
Senior Planner (Policy & Delivery)
East Suffolk Council

Hornbeam House
Crewe Business Park
Electra Way
Crewe
Cheshire
CW1 6GJ

BY EMAIL ONLY - [REDACTED]

T 0300 060 3900

Dear Mr Taylor

Custom & Self Build Housing Supplementary Planning Document – HRA Screening and the requirement for an AA

Thank you for your enquiry on the above dated and received by Natural England on 15th August 2023.

Natural England is a non-departmental public body. Our statutory purpose is to ensure that the natural environment is conserved, enhanced, and managed for the benefit of present and future generations, thereby contributing to sustainable development.

Natural England is a statutory consultee in Local and Neighbourhood planning and must be consulted on draft Local and Neighbourhood development plans and associated documents by the Parish/Town Councils or Neighbourhood Forums where they consider our interests would be affected by the proposals made.

Natural England agrees with your Authority's conclusions of your HRA screening (that no AA is required).

For any further consultations on your plan, please contact: [REDACTED]

Yours sincerely

Sharon Jenkins

Operations Delivery
Consultations Team
Natural England