

Item: 7

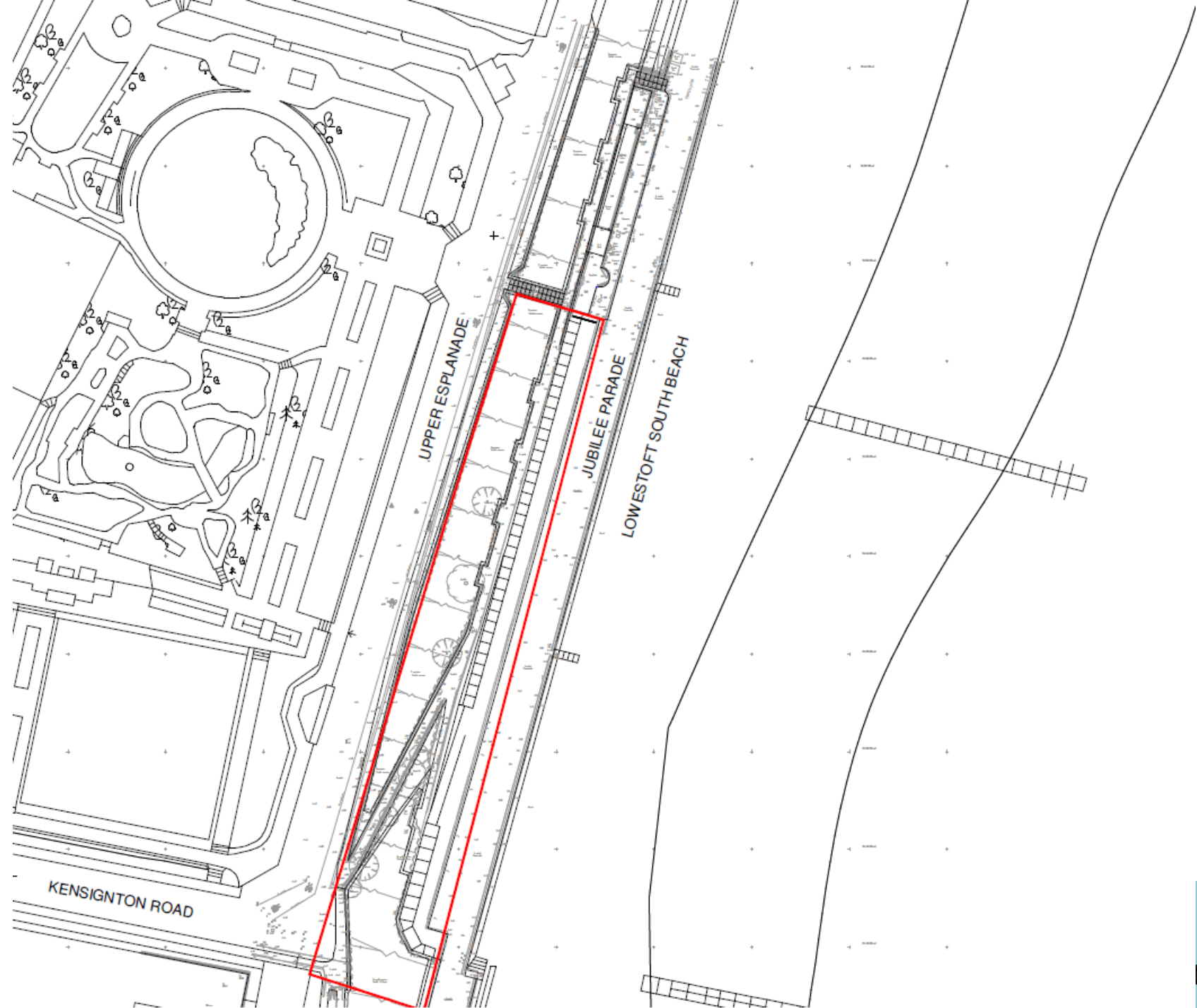
DC/21/1208/FUL

Replacement beach huts on two levels of jubilee parade. Total 72 beach huts, with associated platform, and access stairs.
Provision of 10 accessible beach huts.

Jubilee Parade, The Esplanade, Lowestoft



Site Location Plan



Photographs –
Chalets July 2020
prior to demolition
as part of
DC/20/1648/FUL



Photographs –
Chalets July 2020
prior to demolition
as part of
DC/20/1648/FUL



Photographs –
Looking North
along the lower
prom



Photographs
- Looking south
toward the CEFAS
building



Photographs
- Looking south
from the existing
pedestrian access
from upper prom

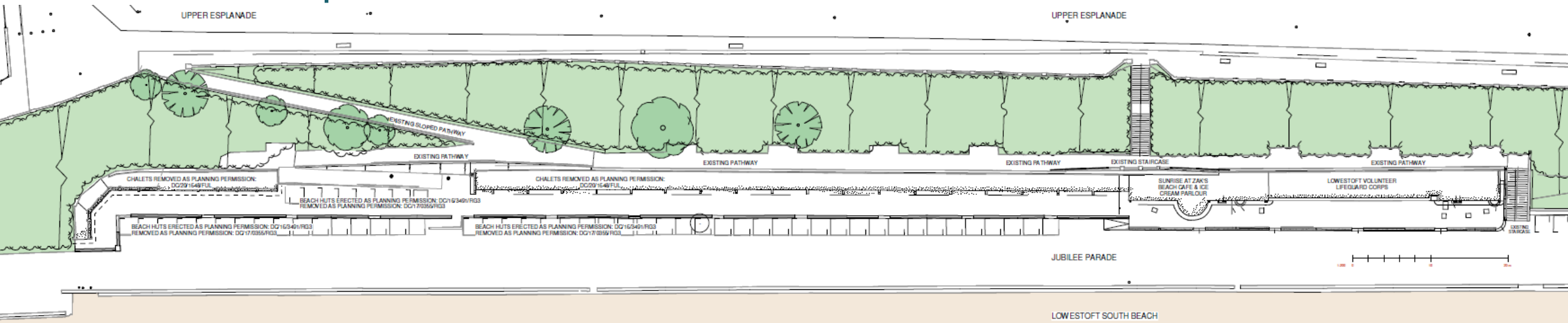


3D image looking west showing former beach huts

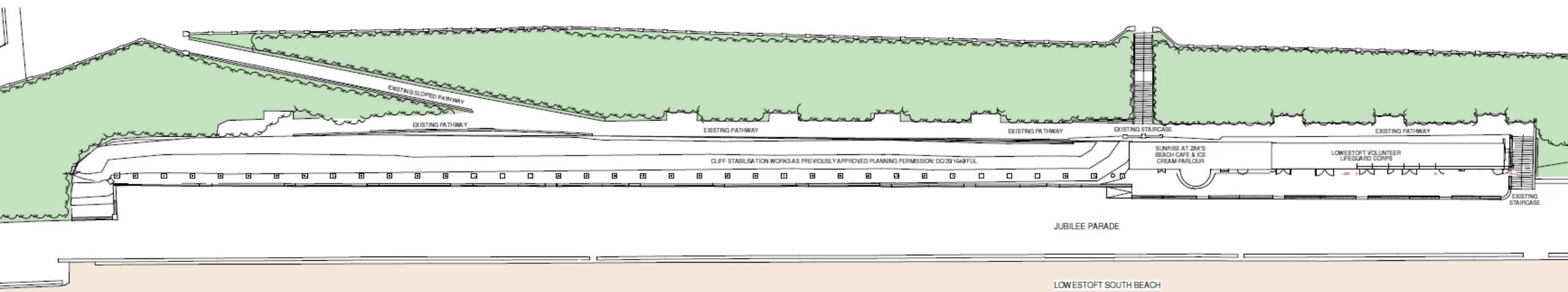


Existing Block Plan

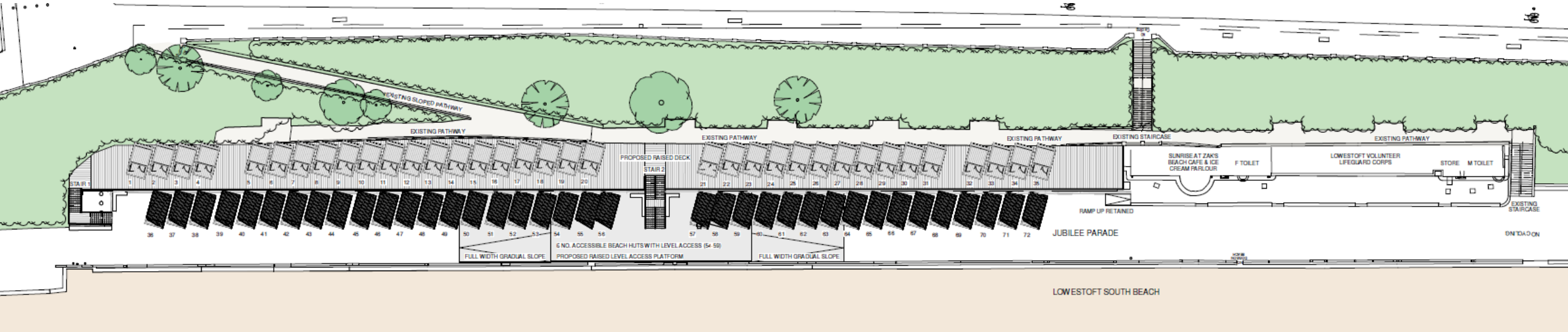
Prior to demolition as part of cliff stabilisation works



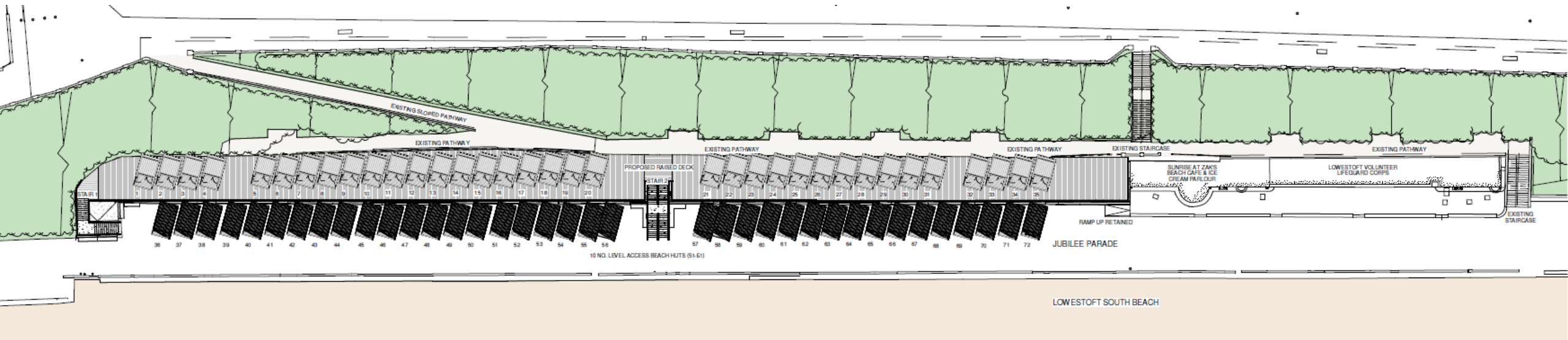
Current block plan



Proposed Block Plan – as originally submitted



Proposed Block Plan – as originally submitted

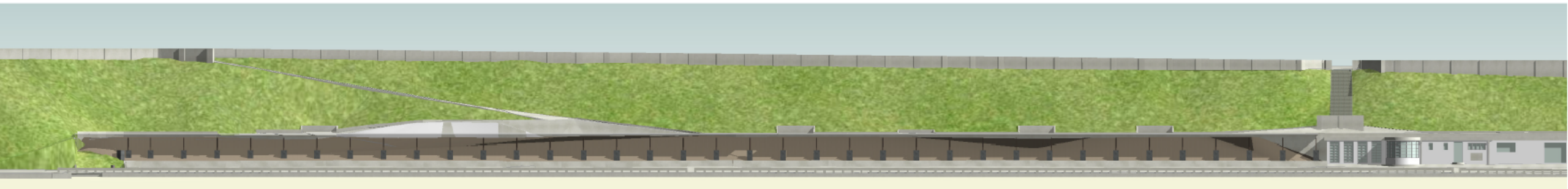


Existing Elevations

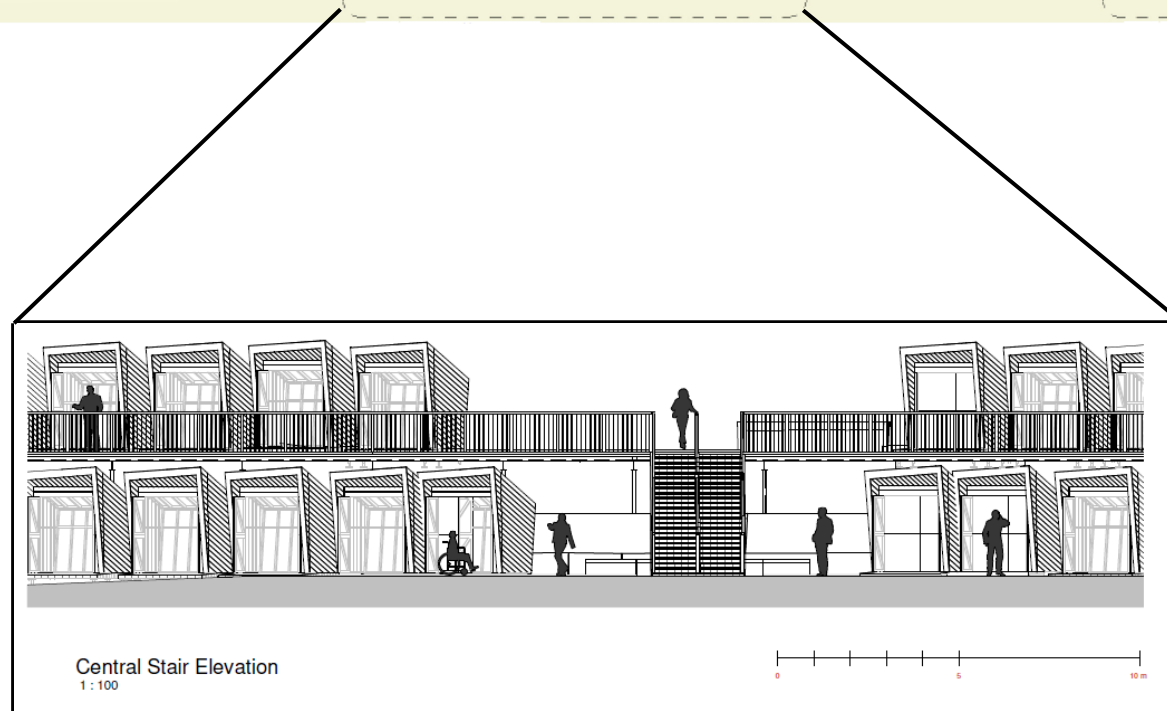
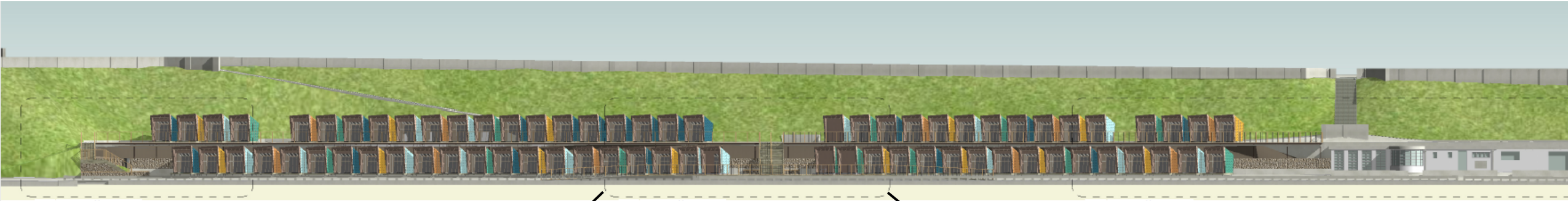
Prior to demolition as part of cliff stabilisation works



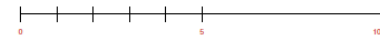
Current elevation



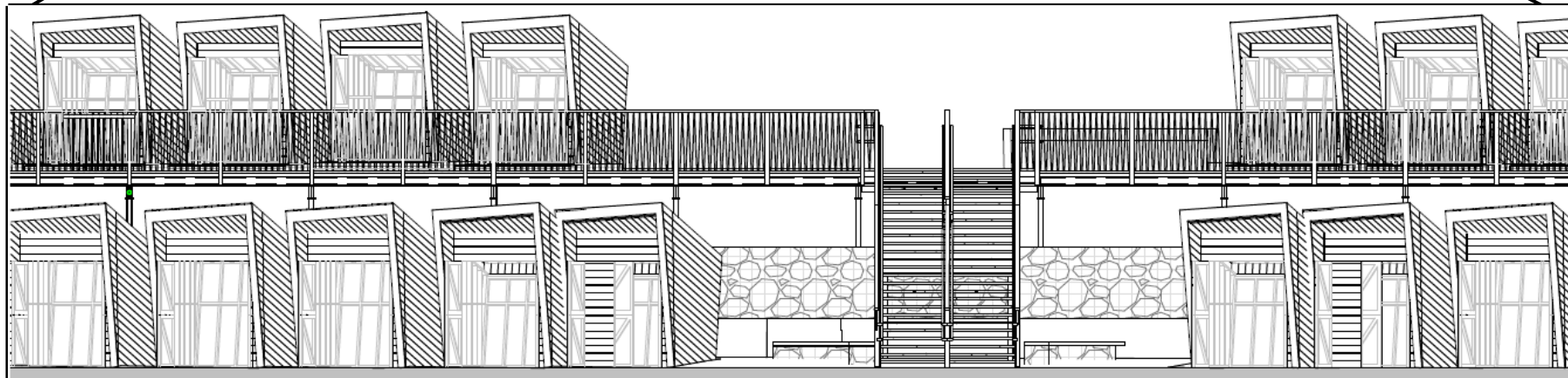
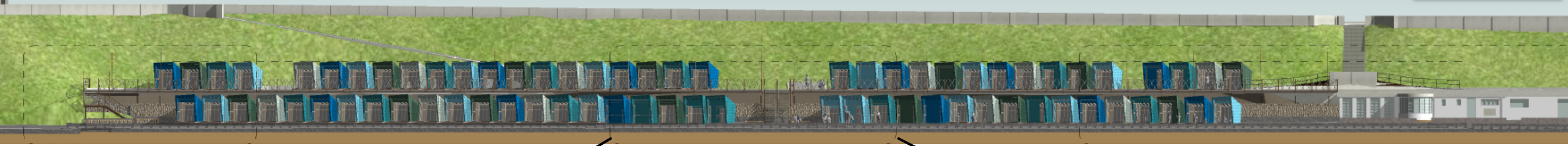
Proposed Elevations – As submitted



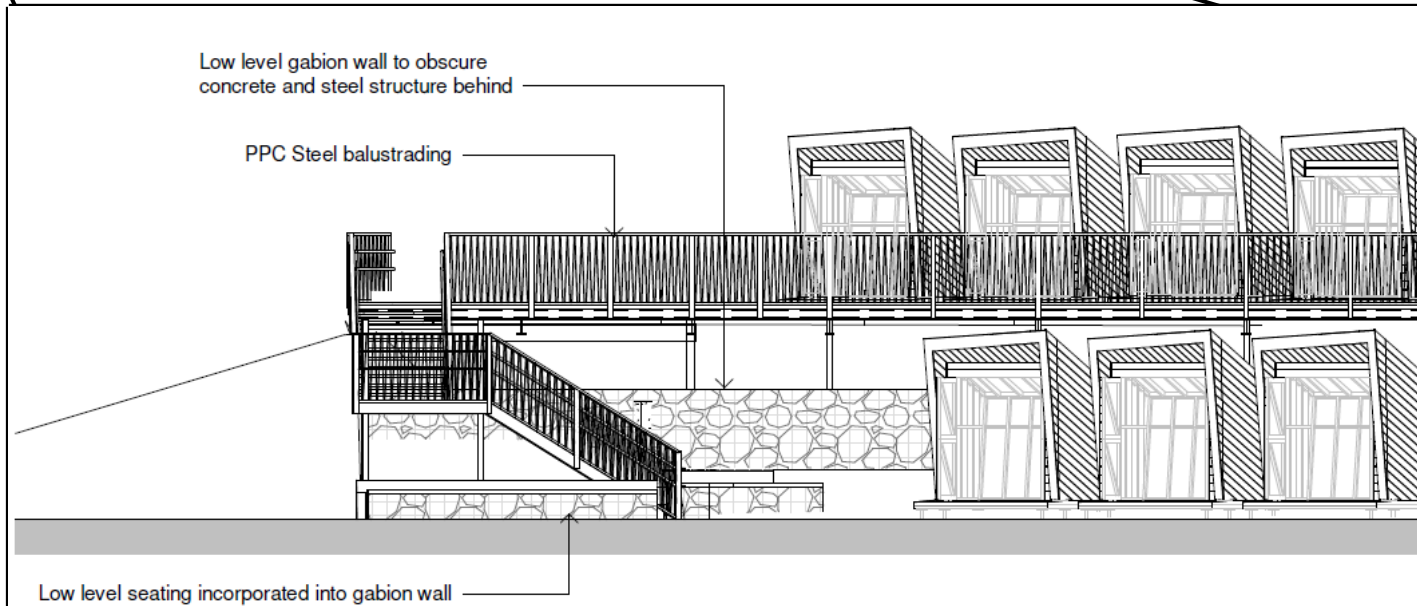
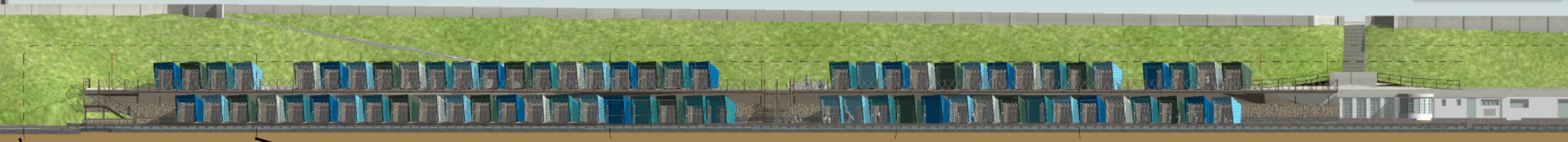
Central Stair Elevation
1 : 100



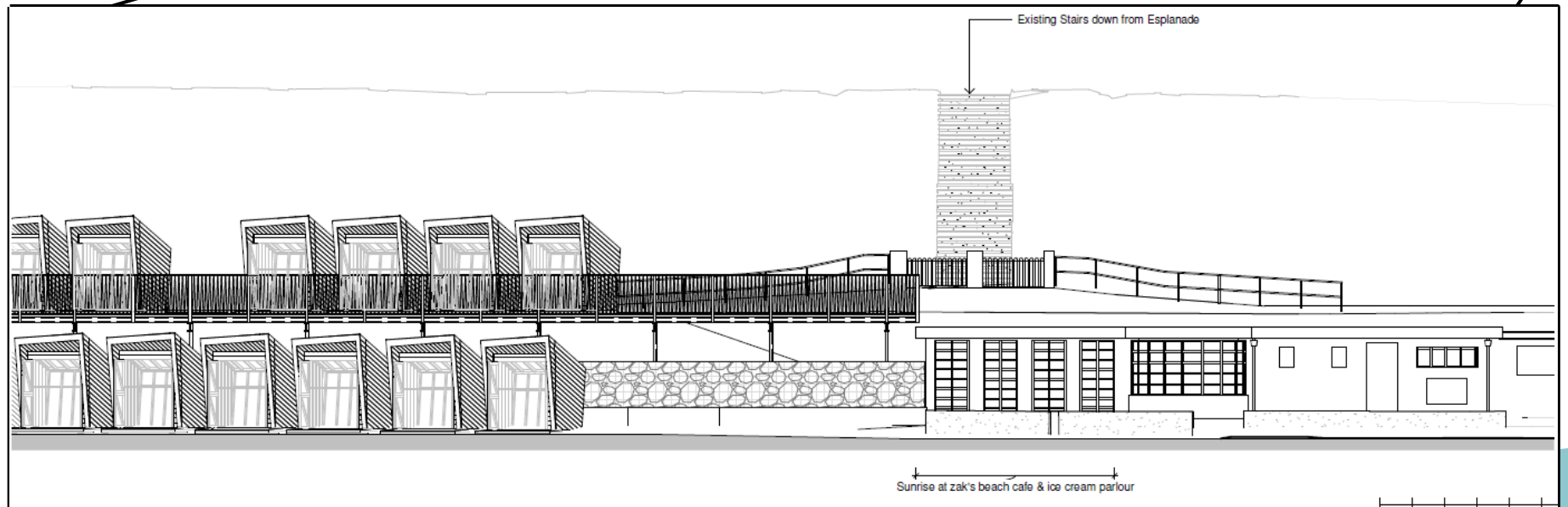
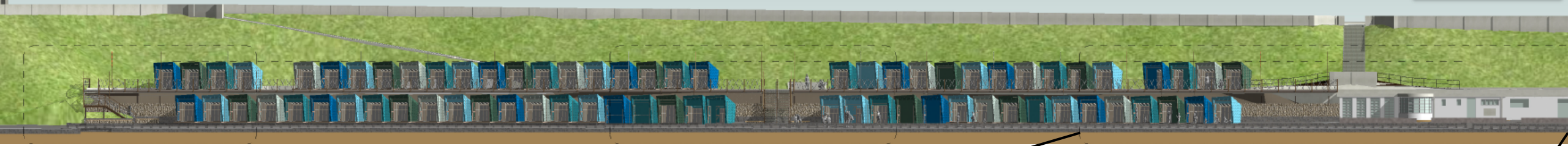
Proposed Elevations – Amended



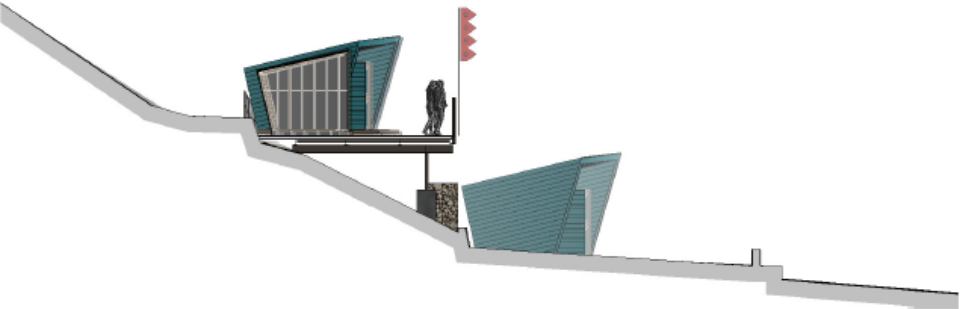
Proposed Elevations – Amended



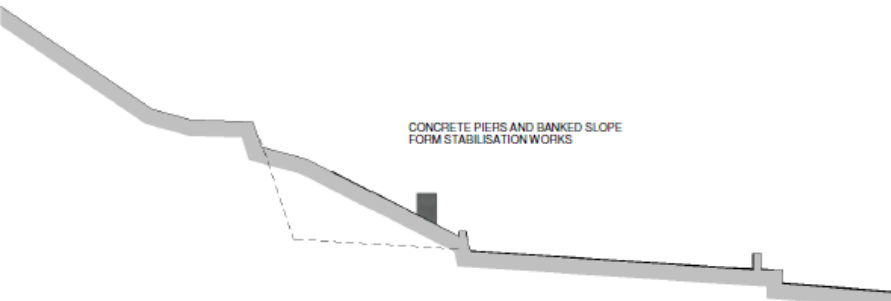
Proposed Elevations – Amended



Existing and proposed Cross-Sections

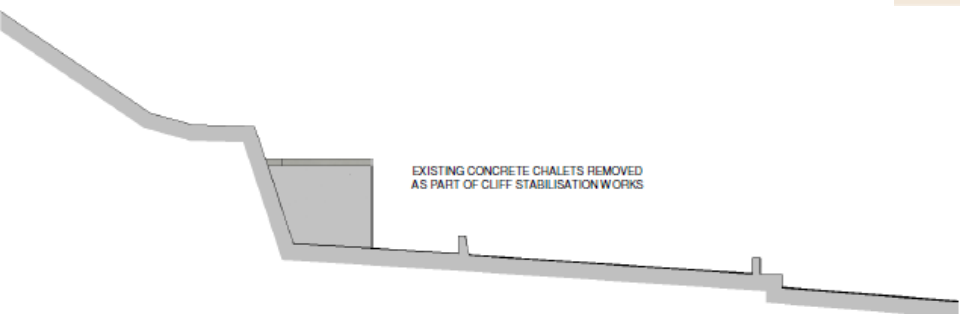


Typical Section 1 - As Proposed
1:100



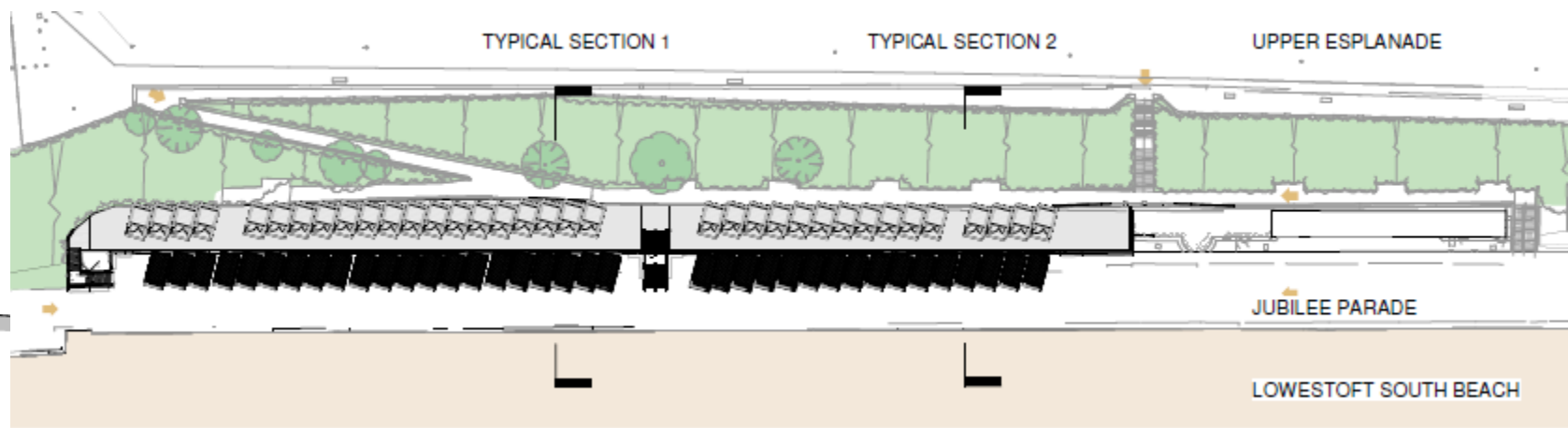
CONCRETE PIERS AND BANKED SLOPE
FORM STABILISATION WORKS

Typical Section 1 - Inc. Approved works
1:100



EXISTING CONCRETE CHALETS REMOVED
AS PART OF CLIFF STABILISATION WORKS

Typical Section 1 - Prior to Approved works
1:100



TYPICAL SECTION 1

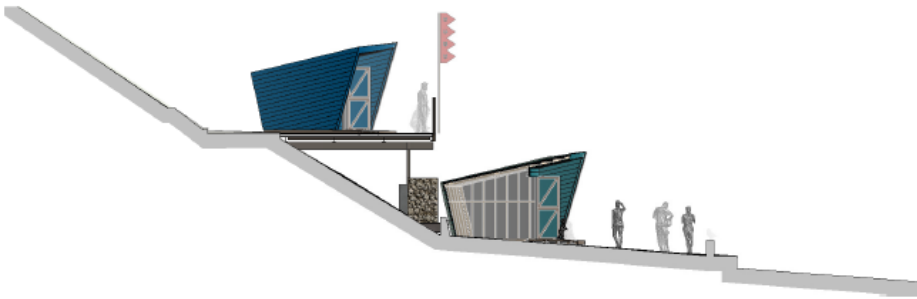
TYPICAL SECTION 2

UPPER ESPLANADE

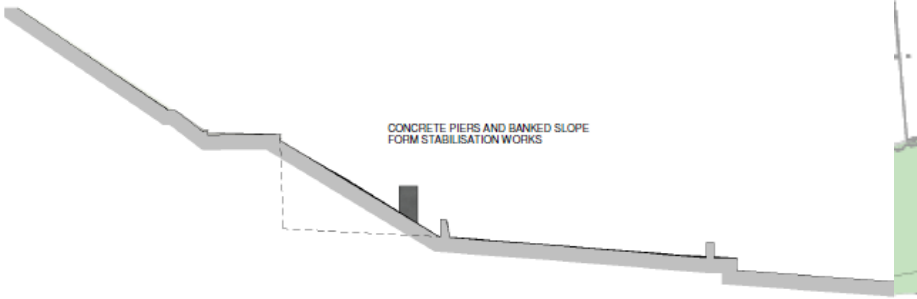
JUBILEE PARADE

LOWESTOFT SOUTH BEACH

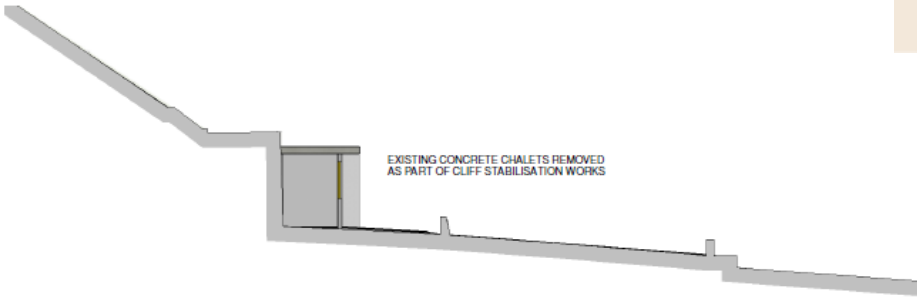
Existing and proposed Cross-Sections



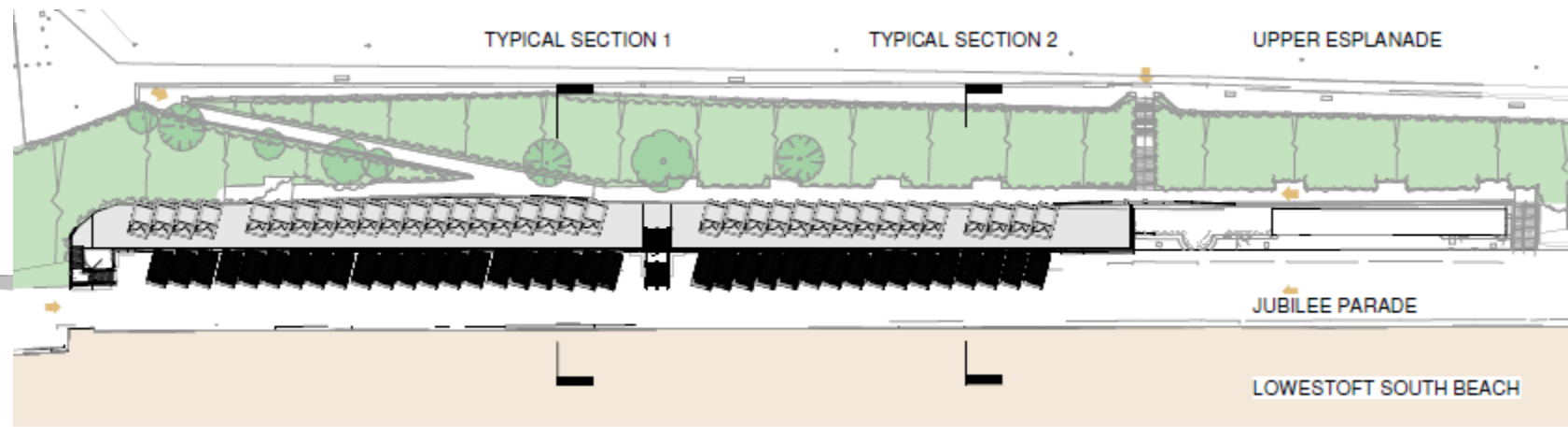
Typical Section 2 - As Proposed
1:100



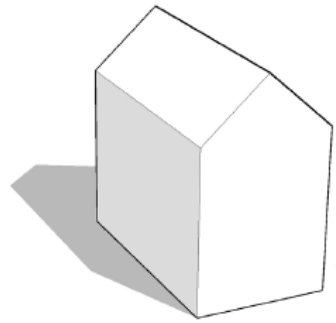
Typical Section 2 - Inc. Approved works
1:100



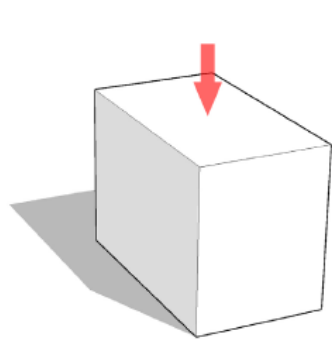
Typical Section 2 - Prior to Approved works
1:100



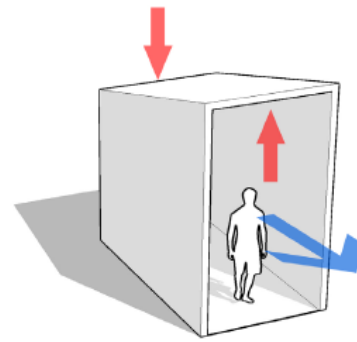
Design process



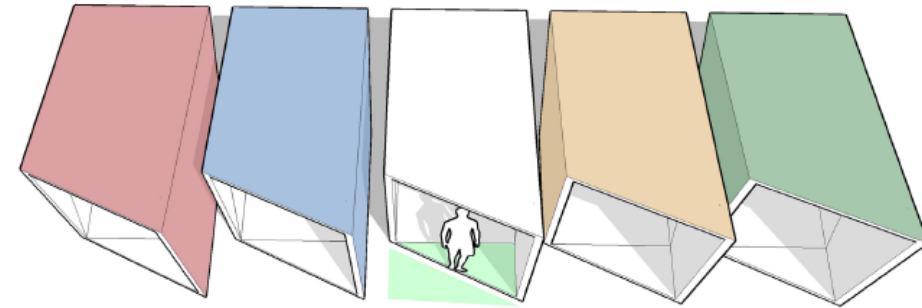
Preconcieved Form:
Traditional beach hut form which sheds rainwater on to neighbouring huts resulting in increased weathering



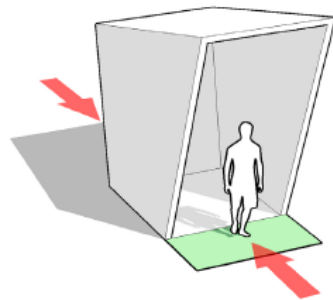
Subtract:
Pitched roof form subtracted back to basic spatial form to fully consider the beach hut requirements



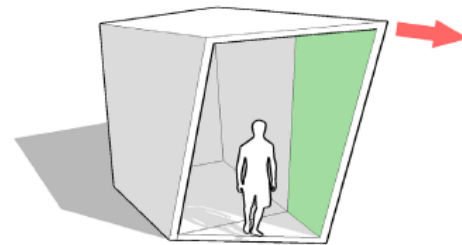
Lift:
Mono pitch created to expell rainwater to rear away from neighbouring huts. Height increased to the front elevation to maximise the view out across the beach whilst providing a more intimate and secure space with the lower ceiling to the rear.



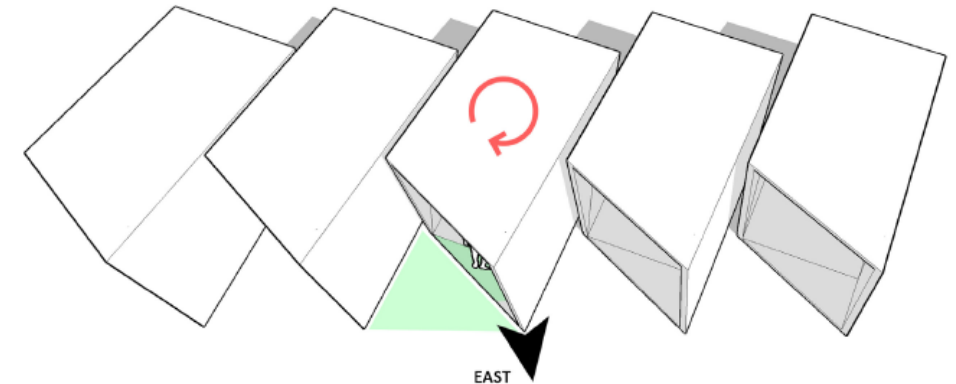
Repeat:
The form has been designed for repetition and when combined creates a staggered frontage to maximise privacy between each hut and protection from the elements. The same form is repeated with a varying colour palette used to differentiate between each hut and to provide contrast and interest along the frontage. The asymmetrical form of the huts creates relief along the elevation and an undulating roof line that provides contrasting views along the sea front.



Pinch:
Bottom of walls pinched together to direct water away from the facade at the rear whilst creating a private covered space at the front.



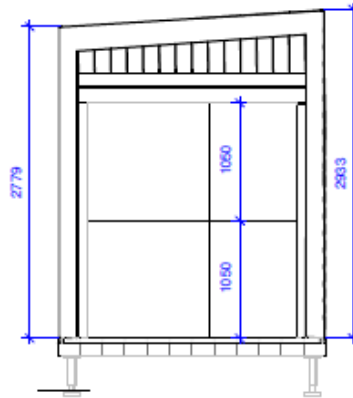
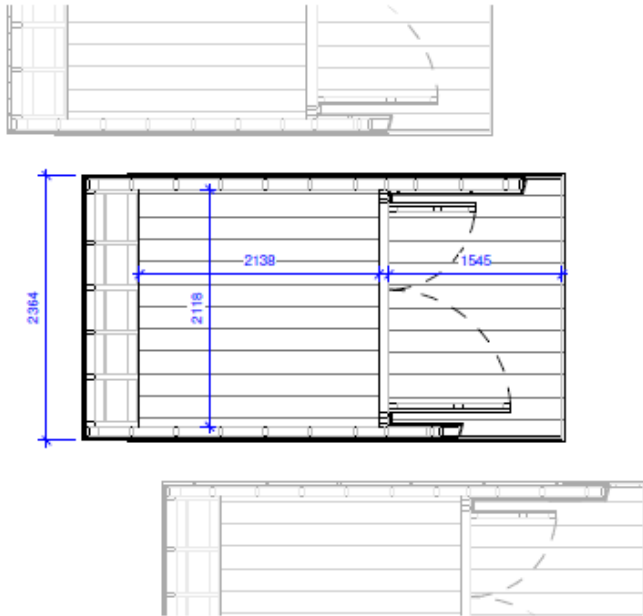
Point:
The apex of the roof is elongated to provide a focal point for each hut pointing out towards the sea, whilst providing further external enclosure and security.



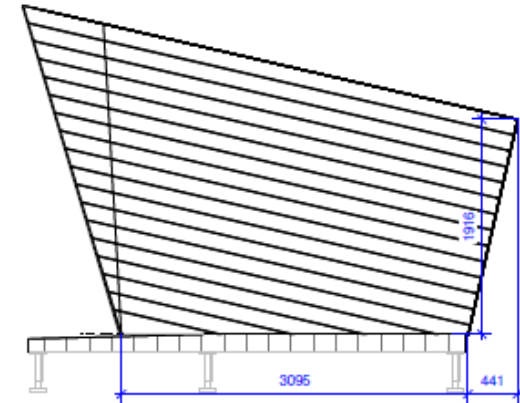
Rotate:
Each hut is rotated to maximise solar exposure throughout the day whilst increasing the external area outside each hut. The subtle shift in orientation also directs each roof point directly towards due east as a gesture to Lowestoft being the most easterly settlement in the UK.

DEVELOPMENT OF FORM

Typical proposed beach hut design

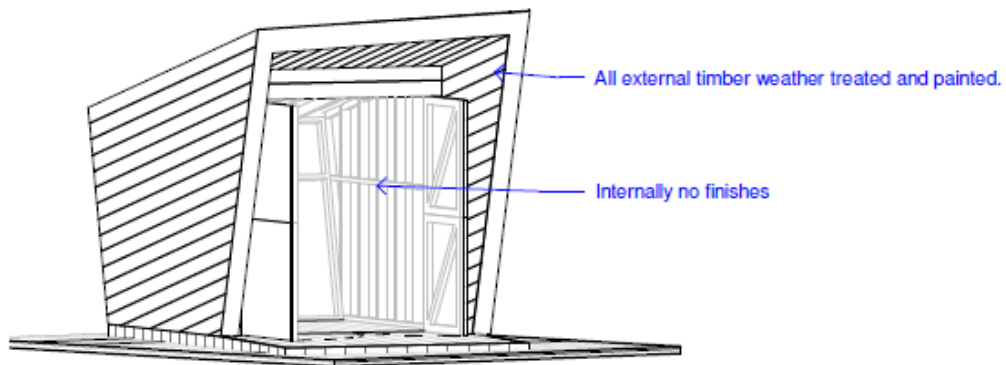


Front
1 : 50

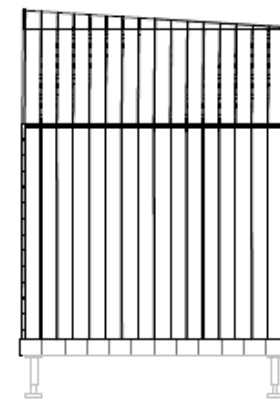


RHS
1 : 50

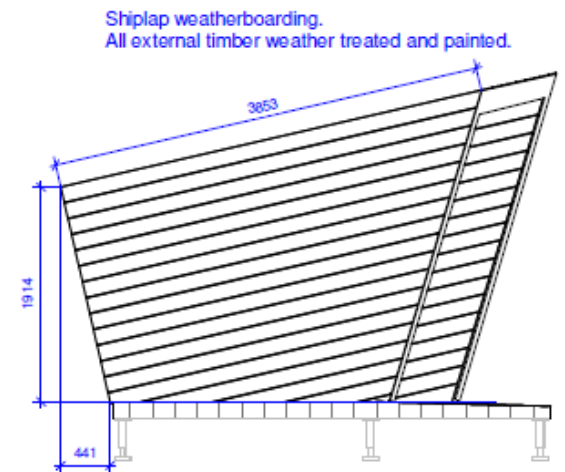
Typical Plan
1 : 50



Typical 3D 2

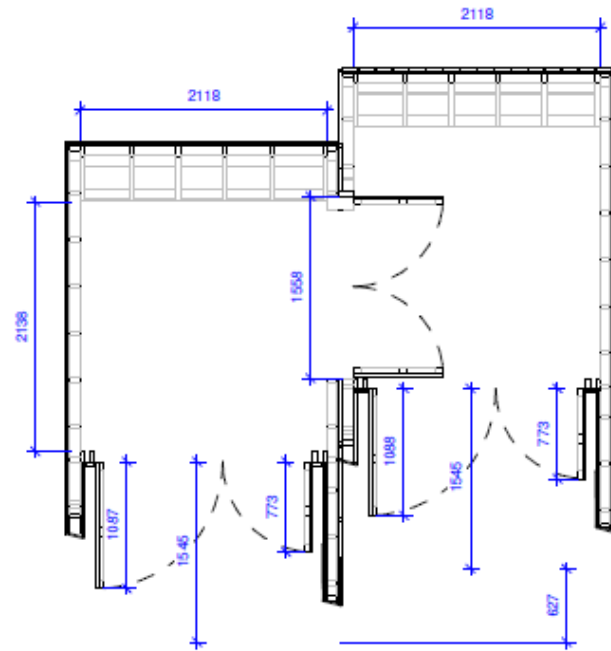


Rear
1 : 50

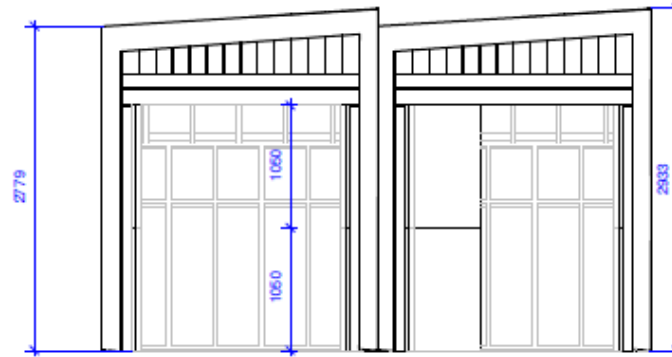


LHS
1 : 50

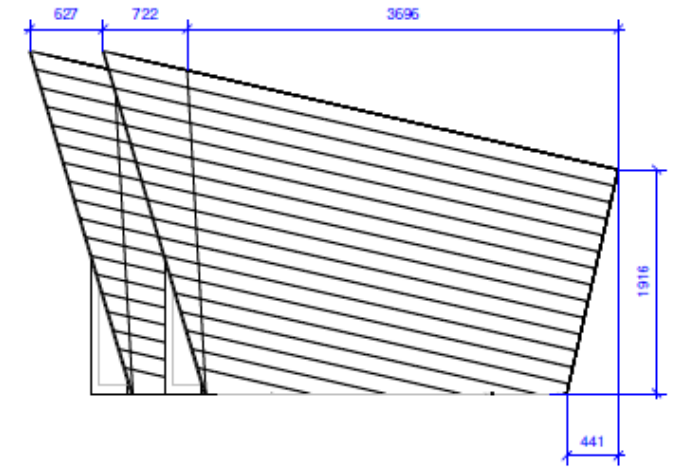
Typical proposed beach hut design



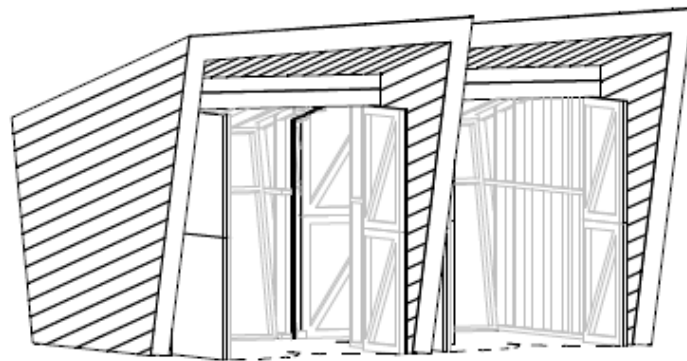
Typical Plan
1 : 50



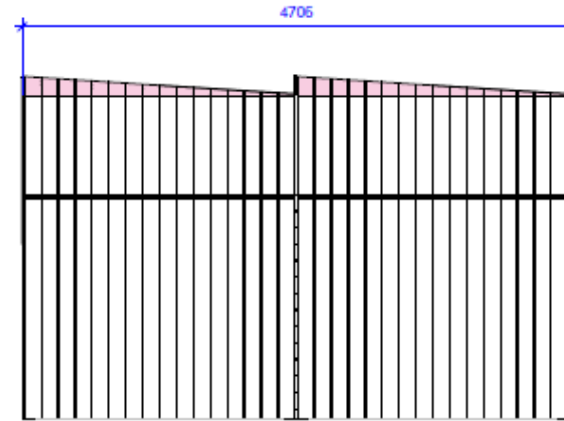
Front
1 : 50



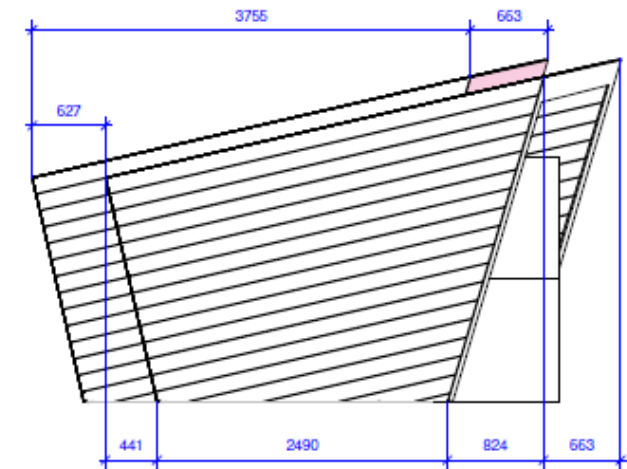
RHS
1 : 50



Typical 3D



Rear
1 : 50



LHS
1 : 50

Typical proposed beach hut design – Colour Scheme

C100 M36 Y2 K8
R0 G108 B176
#006cb0
PANTONE 3553C

C:52 M:0 Y:1 K:0
R113 G197 B232
#71c5e8
PANTONE 297C

C52 M29 Y26 K3
R134 G156 B174
#869cae
PANTONE 2163C

C80 M16 Y34 K19
R45 G140 B159
#2d8c9e
PANTONE 2221C

C62 M19 Y45 K50
R67 G105 B91
#43695b
PANTONE 5545C

PANTONE: 3553C, 297C, 2163C, 2221C, 5545C

Proposed Visualisations




Proposed Visualisations



Proposed Visualisations



Material Planning Considerations and Key Issues

- Principle
 - Economic Considerations
 - Design and Conservation Area
 - Amenity
 - Access and Highways
 - Flood Risk
- 

Recommendatio

n Approve subject to the following summarised conditions:

- 3 year time limit
- Compliance with approved plans
- Approved materials
- Limited to beach hut use only
- Approved colour palette



Objector/ Supporter/ Interested Party



Parish / Town Council



Applicant/Agent

