

Item: 11

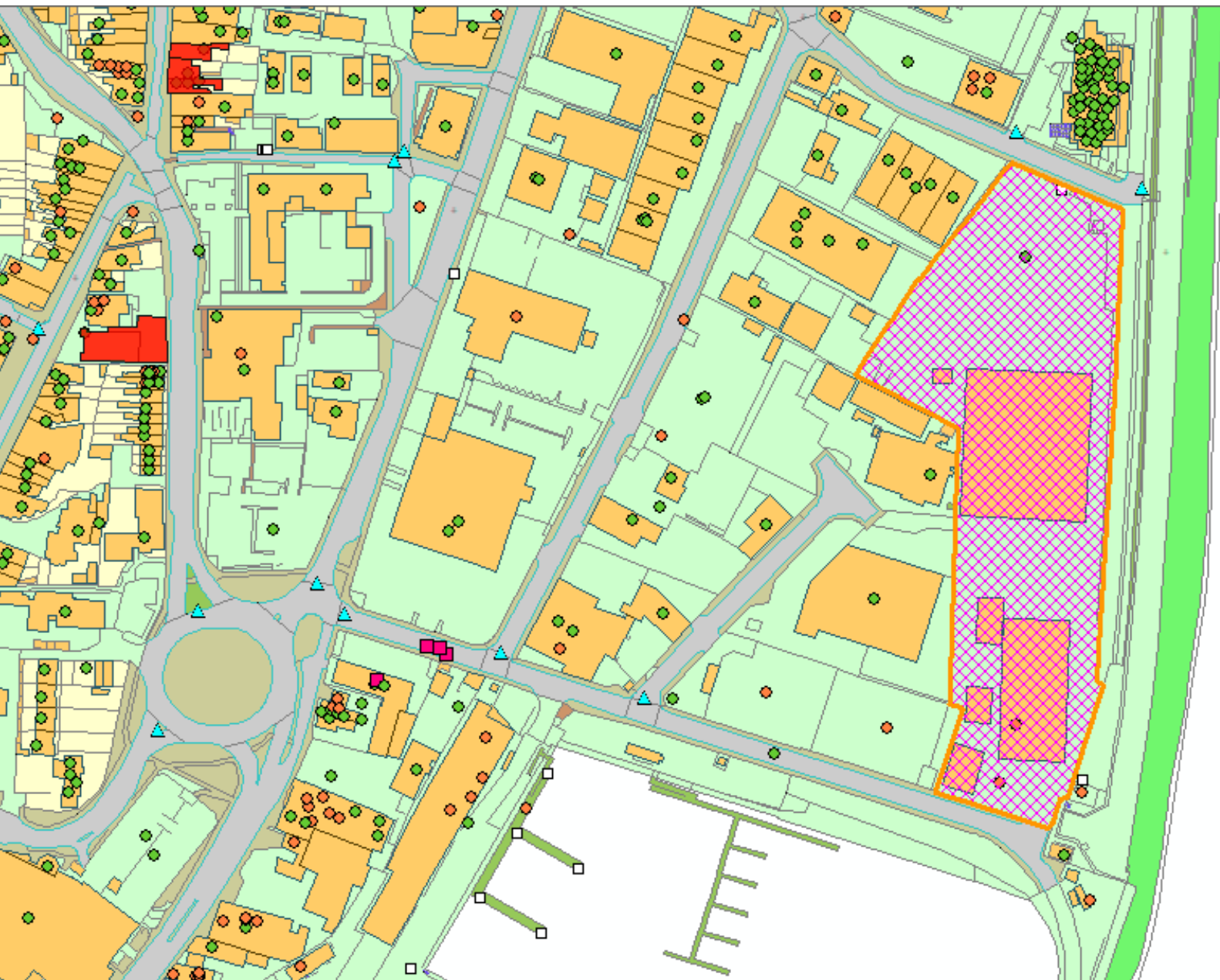
DC/23/1674/FUL

Demolition and development of warehousing and offices to store parts for off-shore renewable infrastructure.

Hamilton Docks, Hamilton Road, Lowestoft, Suffolk,
NR32 1XF



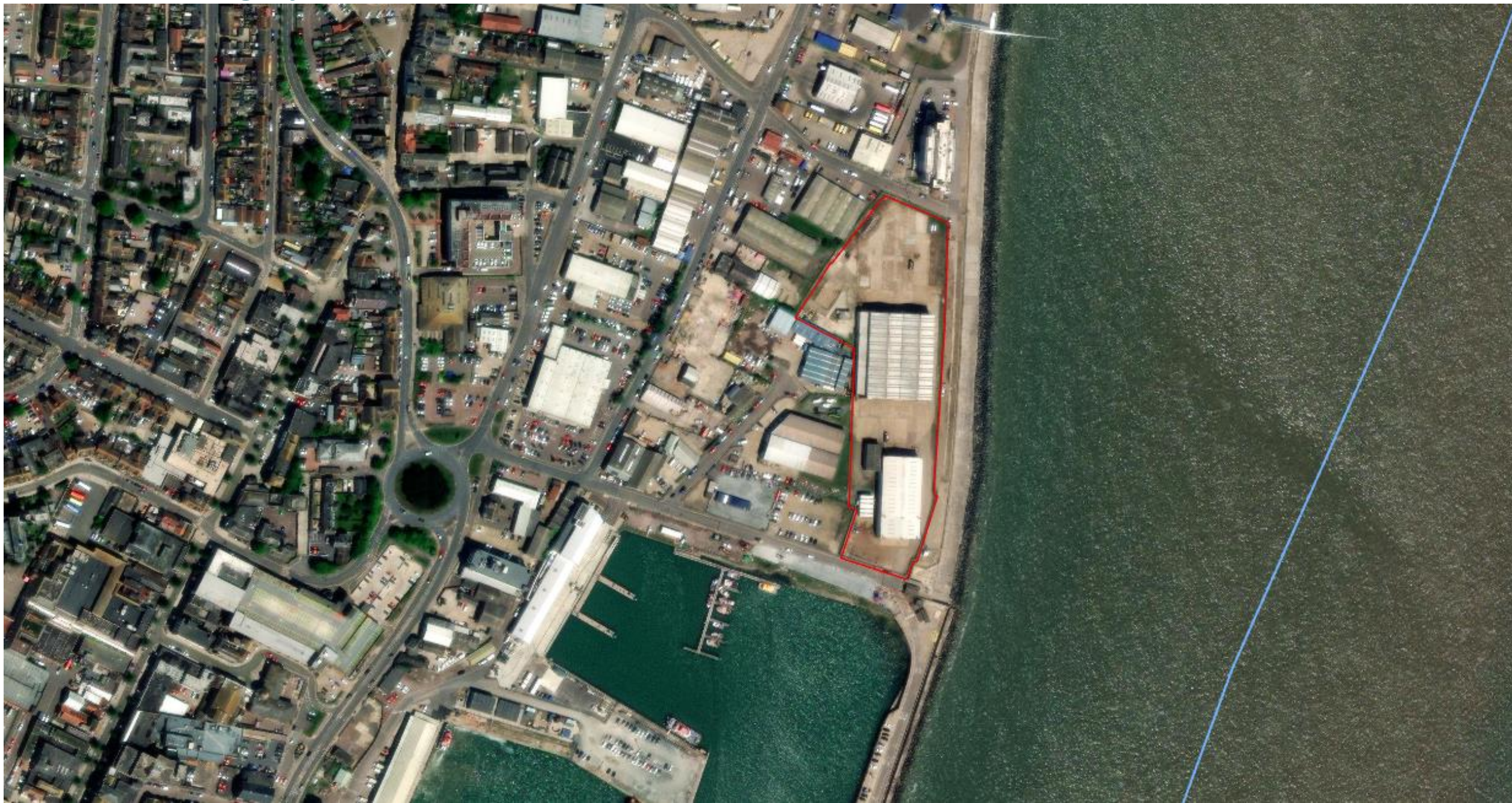
Site Location Plan



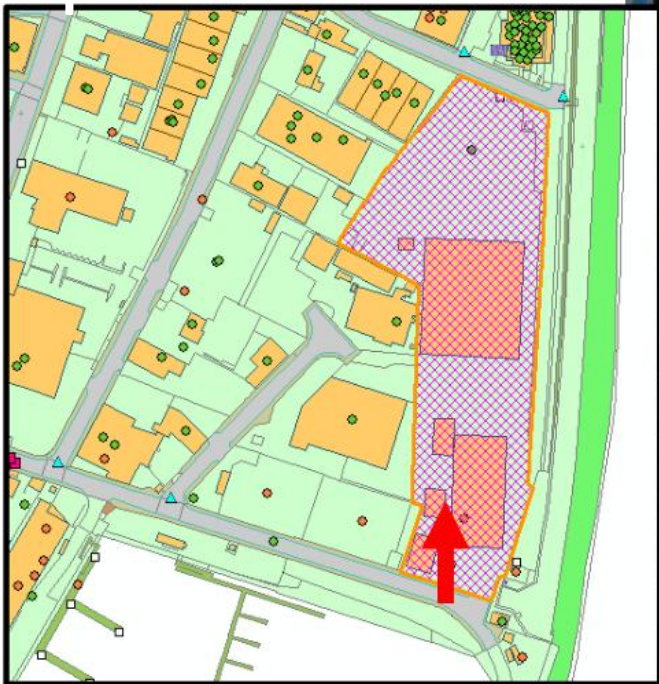
Aerial Photograph



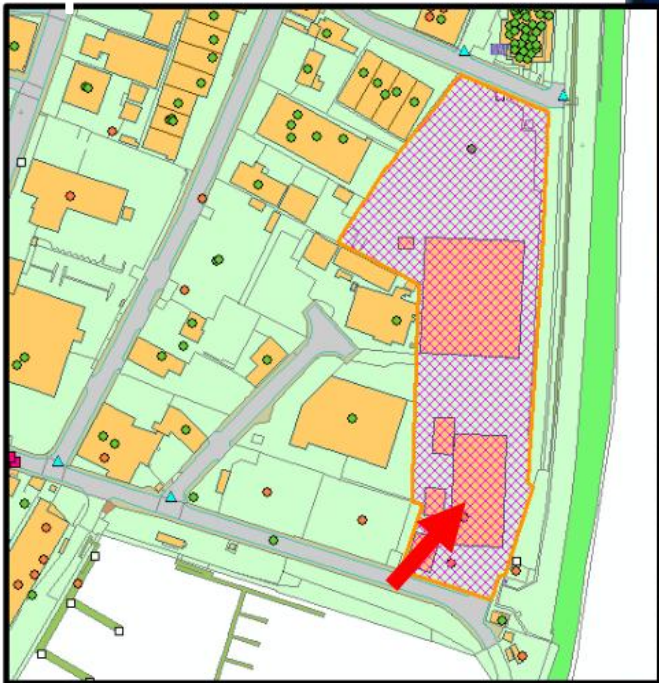
Aerial Photograph



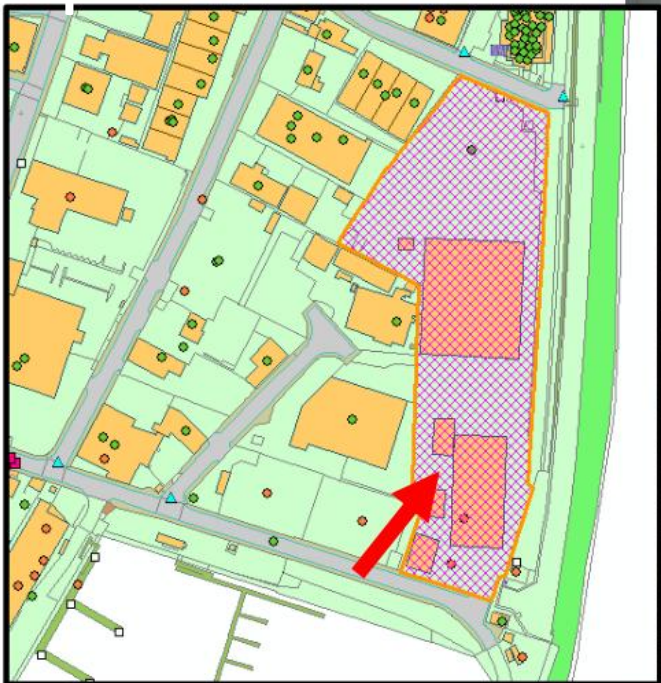
Photographs



Photographs



Photographs



3D Visualisation looking north



3D Visualisation looking west



3D Visualisation looking South



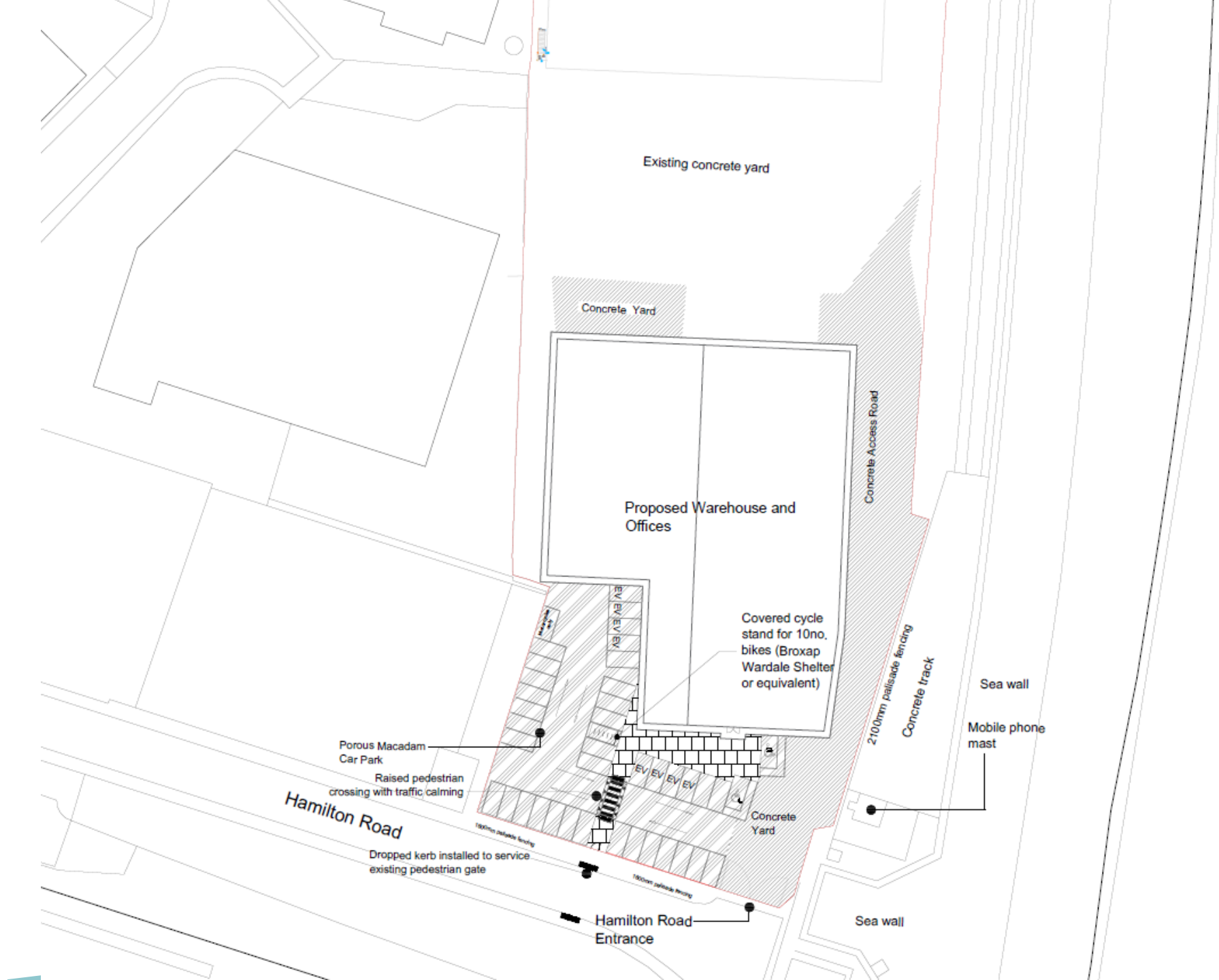
3D Model



Photographs (July 2022)



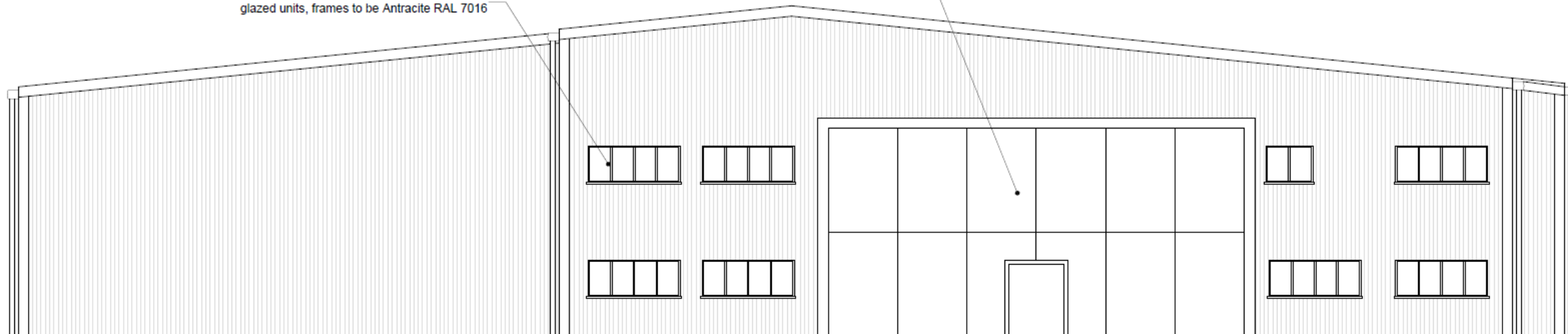
Proposed Block Plan



Proposed Elevations

Powder coated metal windows with sealed double glazed units, frames to be Antracite RAL 7016

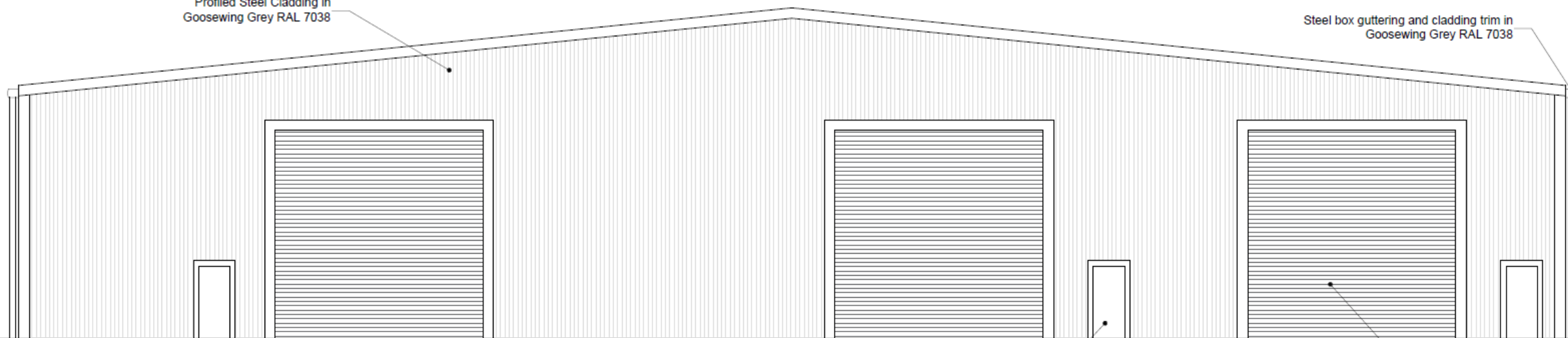
Curtain walling system with cladding flashing around opening in Goosewing Grey RAL 7038



Proposed South Elevation

Profiled Steel Cladding in Goosewing Grey RAL 7038

Steel box guttering and cladding trim in Goosewing Grey RAL 7038

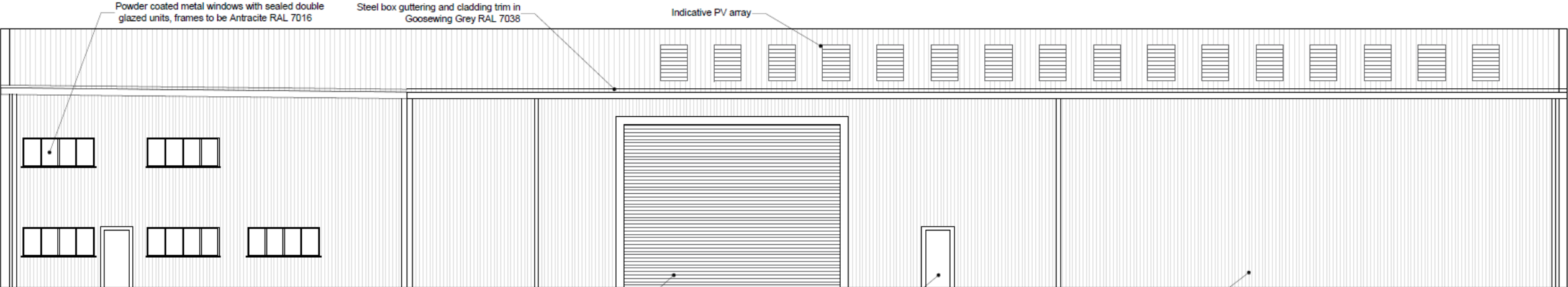


Proposed North Elevation

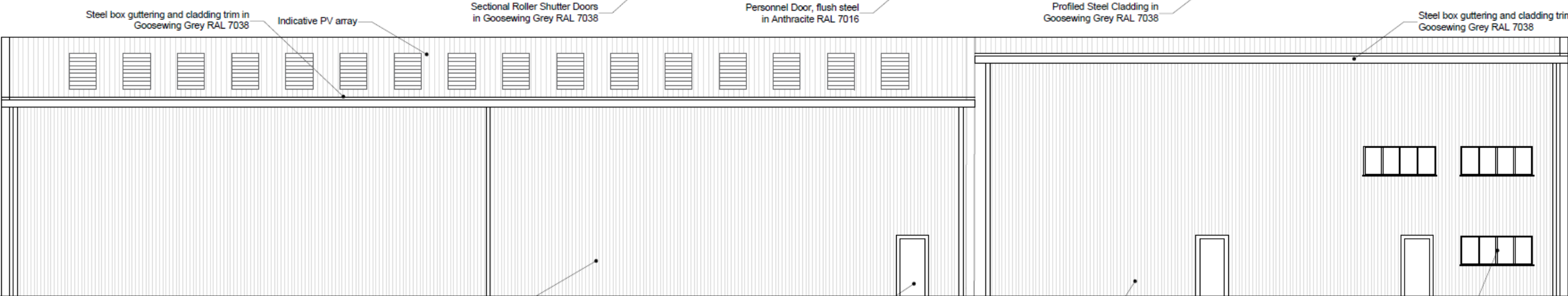
Personnel Doors, flush steel

Sectional Roller Shutter Doors

Proposed Elevations



Proposed East Elevation



Proposed West Elevation

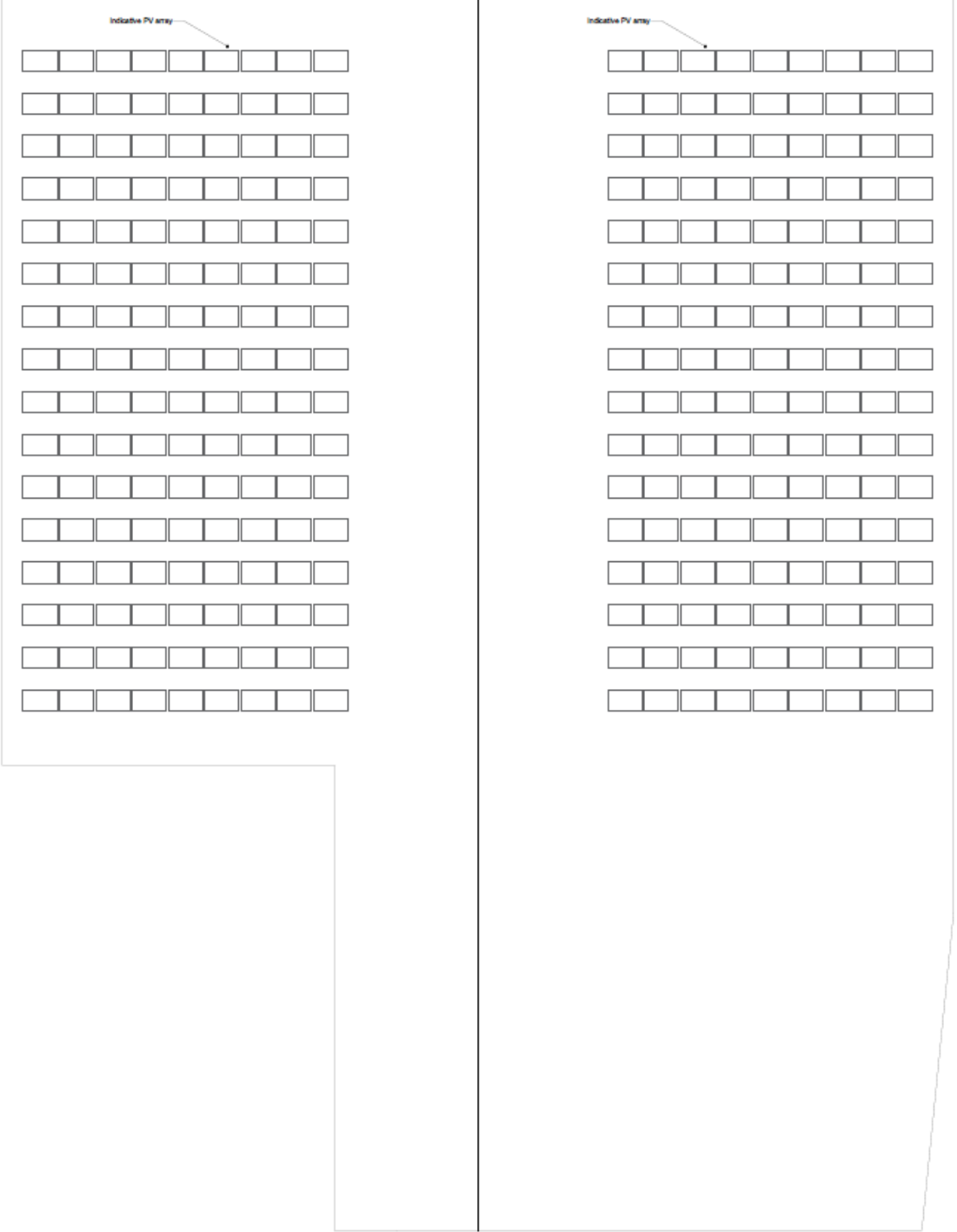
Profiled Steel Cladding in Goosewing Grey RAL 7038

Personnel Door, flush steel in Anthracite RAL 7016

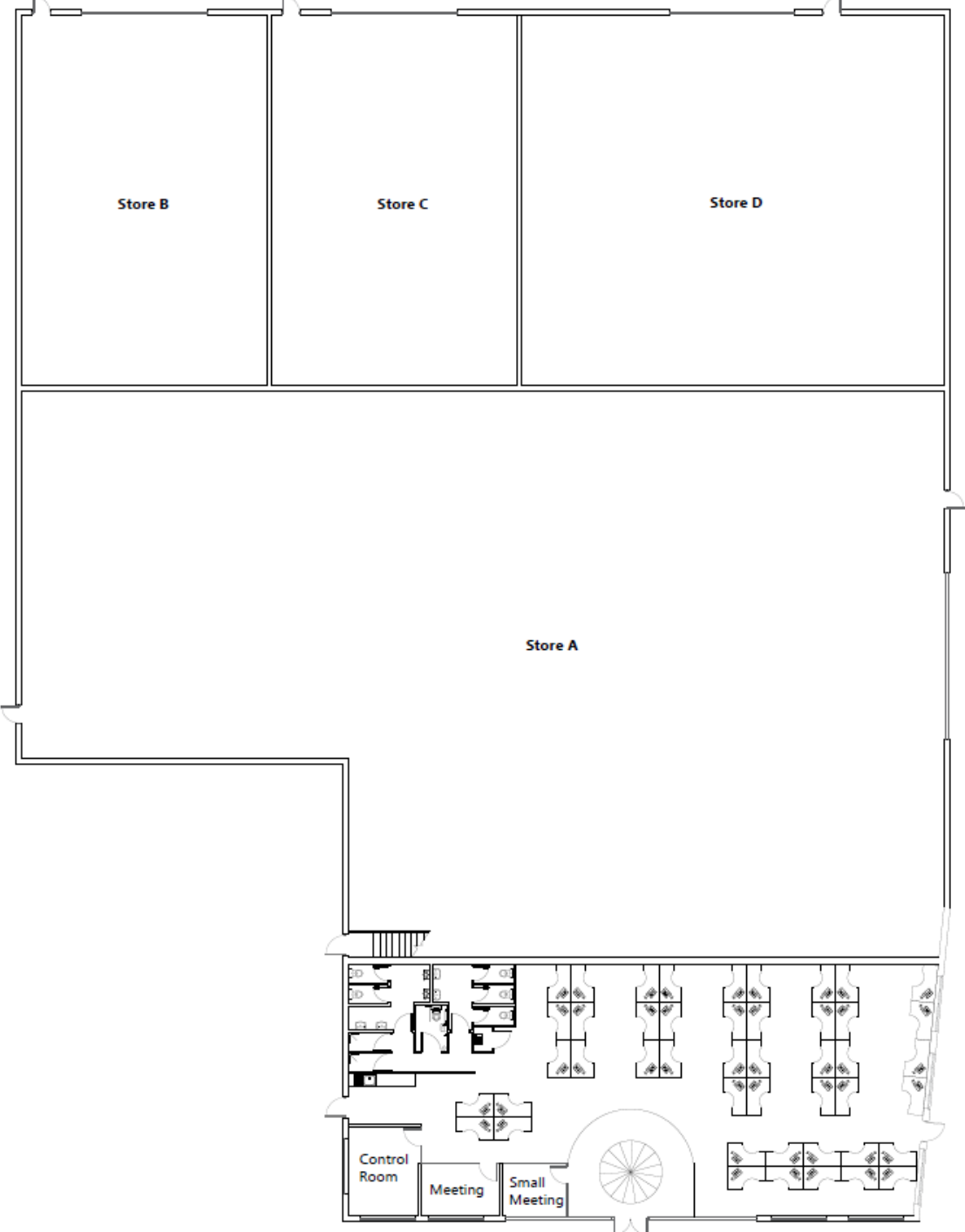
Profiled Steel Cladding in Goosewing Grey RAL 7038

Powder coated metal windows with sealed double glazed units, frames to be Anthracite RAL 7016

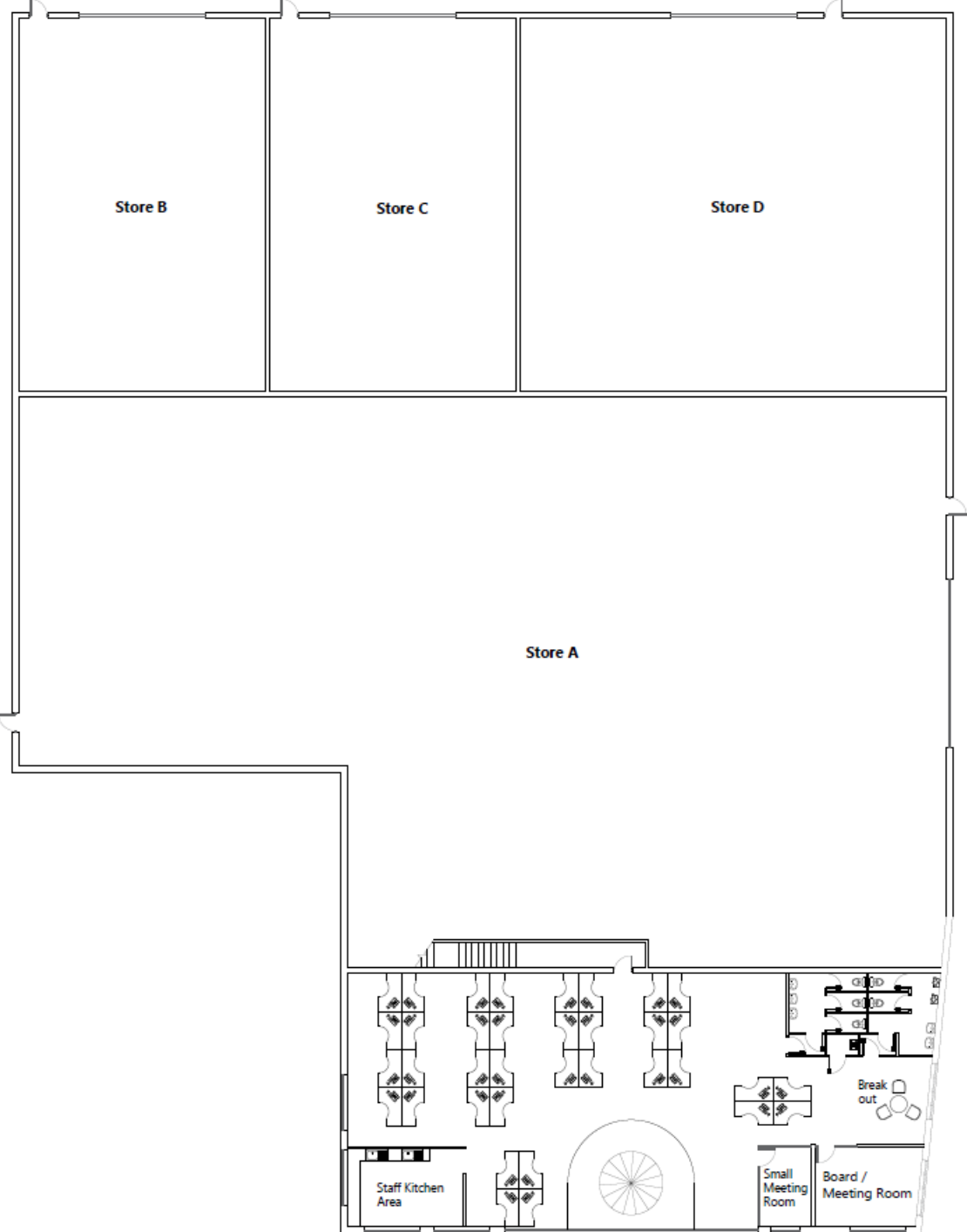
Roof Plan



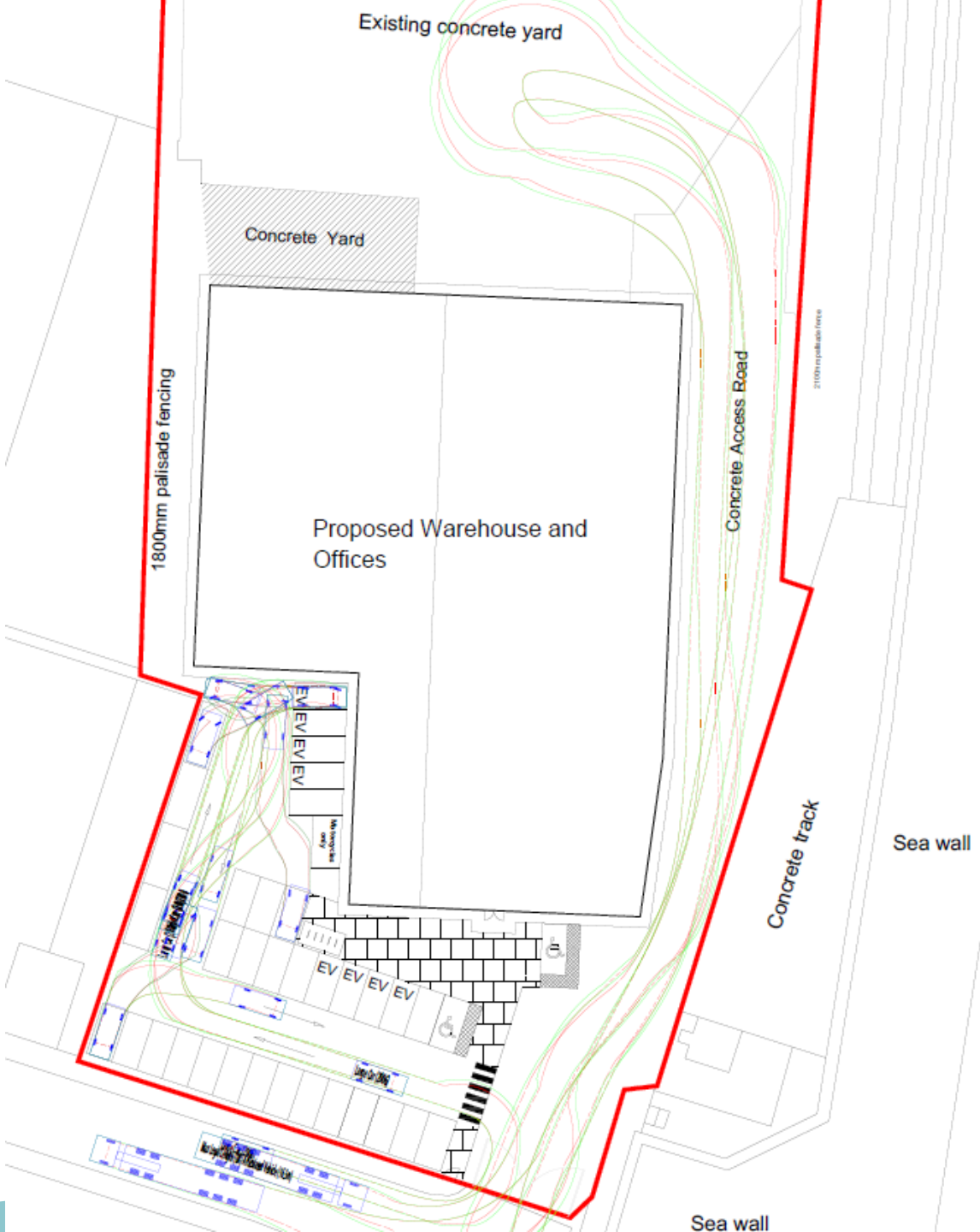
Ground Floor Plan




First Floor Plan



Proposed Block Plan



Material Planning Considerations and Key Issues

- Principle
 - Design
 - Amenity
 - Highways
 - Ecology
 - Flooding and Drainage
 - Heritage
- 
- A teal-colored decorative shape is located at the bottom of the slide, starting from the left edge and extending towards the right, with a slight upward curve on its top edge.

Recommendation

Recommended for approval subject to comments being received from the LLFA and the conditions as outlined within the report – summarised below:

- **Time limit**
- **Approved plans**
- **Approved materials**
- **Ecological avoidance, mitigation, compensation and enhancement measures**
- **Construction environmental management plan**
- **Ecological Enhancement Strategy**
- **Demolition and Construction Management Strategy**
- **Parking**
- **Cycle Storage**
- **Offsite highways works**
- **Bin Storage**



Slides from Objector



Slides from Town/Parish Council



Slides from Agent/Applicant



Slides from Ward Member



