



Habitats Regulations Assessment Screening Statement

**Draft Healthy Environments
Supplementary Planning Document**

November 2023

Contents

1. Introduction.....	1
2. Protected sites covered by this report	3
3. Healthy Environments Supplementary Planning Document	4
4. Other Plans and Projects.....	5
5. Assessment of likely significant effects of the Draft Healthy Environments Supplementary Planning Document (SPD) on Habitat sites.....	7
6. Summary and conclusions	14
Appendix 1: Sources of background information	15
Appendix 2: Locations of Habitat sites	16
Habitat sites within 20km of the East Suffolk Council- Waveney Local Plan Area	16
Habitat sites within 20km of the East Suffolk Council- Suffolk Coastal Local Plan Area	20
Appendix 3: Relevant Habitat sites	24
Appendix 4: Natural England Consultation Response.....	37

1. Introduction

1.1 The Conservation of Habitats and Species Regulations (2017) (as amended) provide protection for sites that are of exceptional importance in respect of rare, endangered or vulnerable natural habitats and species. The network consists of Special Areas of Conservation (SACs) and Special Protection Areas (SPAs). Both types can also be referred to as European Sites. The National Planning Policy Framework (NPPF) states that Ramsar sites should be afforded the same level of protection and refers to SACs, SPAs and Ramsar sites as ‘Habitat Sites’.

1.2 The requirement to undertake Habitats Regulation Assessment (HRA) of plans and projects is set out in the Conservation of Habitats and Species Regulations (2017) (as amended).

1.3 Regulation 105 of the Conservation of Habitats and Species Regulations (2017) states:

‘Where a land use plan:

(a) Is likely to have a significant effect on a European site or a European offshore marine site (either alone or in combination with other plans or projects), and

(b) Is not directly connected with or necessary to the management of the site, The plan-making authority for that plan must, before the plan is given effect, make an appropriate assessment of the implications for the site in view of that site’s conservation objectives.’

1.4 The HRA is therefore undertaken in stages and should conclude whether or not a proposal or policy would adversely affect the integrity of any sites.

Stage 1: Determining whether a plan is likely to have a significant effect on a European site. This needs to take account of the likely impacts in combination with other relevant plans and projects. This assessment should be made using the precautionary principle. The screening assessment must reflect the outcomes of the 2018 judgement of the Court of Justice of the European

Union¹, which has ruled that where mitigation is necessary this must be identified through an Appropriate Assessment.

Stage 2: Carrying out Appropriate Assessment and ascertaining the effect on site integrity. The effects of the plan on the conservation objectives of sites should be assessed, to ascertain whether the plan has an adverse effect on the integrity of a European site.

Stage 3: Identifying mitigation measures and alternative solutions. The aim of this stage is to find ways of avoiding or significantly reducing adverse impacts, so that site integrity is no longer at risk. If there are still likely to be negative impacts, the option should be dropped, unless exceptionally it can be justified by imperative reasons of overriding public interest.

1.5 The draft Healthy Environments Supplementary Planning Document (SPD) is being produced by East Suffolk Council. The SPD will apply to the whole of the East Suffolk Council area, outside of the Broads. This report considers whether there are likely to be significant effects on protected Habitat sites and where a full Appropriate Assessment may be required.

1.6 East Suffolk (outside of the Broads) is covered by two Local Plans, the East Suffolk Council - Suffolk Coastal Local Plan adopted September 2020 and the East Suffolk Council - Waveney Local Plan adopted March 2019.

1.7 Both Local Plans were subject to Habitats Regulations Assessment as part of their production. Where screening identified a likely significant effect, Appropriate Assessment was undertaken and the mitigation measures identified were incorporated within the Plans, resulting in conclusions that the plans will not lead to any adverse effects on Habitat sites within and in the vicinity of the (then) Suffolk Coastal and Waveney Districts. Both Appropriate Assessments identified recreational disturbance particularly from dog walkers as a significant effect. The Council has subsequently produced a Recreational Avoidance and Mitigation Strategy and requires payment towards mitigation from residential developments within 13km of the protected Habitat sites.

¹ C-323/17 – People over Wind, Peter Sweetman v Coillte Teoranta

2. Protected sites covered by this report

2.1 Sites included in this assessment are listed in Table 1. This includes all sites that are within 20km of East Suffolk. The locations of the sites are shown on maps in Appendix 2 and the Qualifying Features and Conservation Objectives of the sites are contained in Appendix 3, along with a summary of the pressures and threats as documented in the Appropriate Assessments for the Local Plans.

Table 1: Relevant Habitat sites

Name
Alde-Ore and Butley Estuaries SAC,
Alde-Ore Estuary SPA, Ramsar
Benacre to Easton Barents SPA
Benacre to Easton Barents Lagoons SAC
Breydon Water SPA, Ramsar
Broadland SPA, Ramsar
Deben Estuary SPA, Ramsar
Dew's Ponds SAC
Great Yarmouth North Denes SPA
Haisborough, Hammond and Winterton SAC
Minsmere to Walberswick Heaths & Marshes SAC
Minsmere – Walberswick SPA, Ramsar
Norfolk Valley Fens SAC
Outer Thames Estuary SPA
Orfordness – Shingle Street SAC
Sandlings SPA
Southern North Sea SAC
Staverton Park and The Thicks, Wantisden SAC
Stour and Orwell Estuaries SPA, Ramsar
The Broads SAC
Winterton-Horsey Dunes SAC

3. Healthy Environments Supplementary Planning Document

- 3.1 This HRA report reviews the draft Healthy Environments Supplementary Planning Document (SPD).
- 3.2 The draft Healthy Environments SPD provides information and advice to inform the consideration health and wellbeing in new developments. The guidance contained in the draft SPD will assist in the implementation of Local Plan and Neighbourhood Plan policies for East Suffolk. The SPD, when adopted, will be a material consideration in the determination of applications for planning permission. The SPD does not cover parts of East Suffolk that are within the Broads, for which the Broads Authority is the local planning authority.
- 3.3 The introduction and background chapters of the SPD explain the policy context, the purpose of the SPD, provide definitions of key terms and set out health and wellbeing data for East Suffolk. These sections are factual and descriptive and have therefore not been included in the screening table in section 5 of this report. The SPD will also contain information in a number of appendices including a glossary, a healthy environment master checklist, health and wellbeing indicators and a health inequalities matrix. Again, as these sections are mostly descriptive and do not include new guidance they have not been included in the screening table in section 5 of this report.
- 3.4 Other chapters in the SPD provide detailed information and advice concerning the implementation of the Council's Local Plan policies. Topics covered within the SPD include: green infrastructure, active travel, healthy homes, schools and workplaces, healthy centres and community facilities and lifetime homes. These chapters are considered in the screening table in section 5 of this report.

4. Other Plans and Projects

- 4.1 Regulation 105 of the Habitats Regulations requires consideration to be given to whether a Plan will have an effect either alone or in combination with other plans or projects.
- 4.2 As noted in the introduction, the other key plans are the Local Plans. The Local Plans set out the broad scale and distribution of development across the area of East Suffolk formerly covered by Suffolk Coastal District and Waveney District.
- 4.3 The draft Healthy Environments Supplementary Planning Document (SPD) adds further detail and guidance to a wide range of policies within the Suffolk Coastal Local Plan and the Waveney Local Plan to ensure positive health and wellbeing outcomes from new development. Specifically the following Local Plan policies are supported by the SPD.

Key policies – Suffolk Coastal Local Plan	Key policies – Waveney Local Plan
Policy SCLP7.1 Sustainable Transport	Policy WLP8.21 Sustainable Transport
Policy SCLP7.2 Parking Proposals and Standards	Policy WLP8.22 Built Community Services and Facilities
Policy SCLP8.1 Community Facilities and Assets	Policy WLP8.29 Design
Policy SCLP8.2 Open Space	Policy WLP8.30 Design of Open Spaces
Policy SCLP10.1 Biodiversity and Geodiversity	Policy WLP8.31 Lifetime Design
Policy SCLP11.1 Design Quality	Policy WLP8.34 Biodiversity and Geodiversity

- 4.4 A screening process considered each policy in the Suffolk Coastal and Waveney Local Plans and concluded whether significant effects were likely and if Appropriate Assessment was therefore needed. The Appropriate Assessments of the Suffolk Coastal and Waveney Local Plans considered the following themes:

- Recreation pressure,
- Air quality and traffic emissions,
- Biodiversity net gain,
- Urbanisation,
- Water quality, resources and treatment, and
- Flood risk and coastal erosion.

- 4.5 Mitigation measures were identified within the Appropriate Assessments and incorporated within both Local Plans, resulting in a conclusion that neither plan would lead to any adverse effects on Habitat sites within and in the vicinity of the (then) Suffolk Coastal and Waveney Districts.

5. Assessment of likely significant effects of the Draft Healthy Environments Supplementary Planning Document (SPD) on Habitat sites

- 5.1 Table 3 below considers each relevant section of the draft Healthy Environments Supplementary Planning Document (SPD) in relation to whether there is potential for a likely significant effect on protected Habitat sites. This constitutes Stage 1 as set out under paragraph 1.4 above. Consideration is given to the characteristics and location of the protected sites. The relevant sections are considered within the context of the Local Plan policies from which they hang and which have themselves been subject to Habitats Regulations Assessment, as set out in section 4 above.

Table 3: Likely significant effects of the Draft Healthy Environments Supplementary Planning Document

Chapter	Assessment of potential impact on Habitat sites	Habitat sites that could possibly be affected	Likely significant effect identified	AA needed?
Green Infrastructure	<p>This chapter sets out guidance on green open space and play provision, including detailed guidance on the calculation of required quantities. Open space design is also considered with design principles for different typologies which includes the consideration of accessibility and inclusivity; location; resilience; flexibility of use; safety and security; sensory stimulation. Further guidance is given relating to trees, landscaping, green routes and multi-functional sustainable drainage systems.</p> <p>Within this chapter there is specific guidance on Suitable Alternative Natural Greenspace (SANG) requirements associated with new developments. This covers requirements for different scales of development and give guidance on both quantity and quality.</p> <p>The guidance in this chapter refers back to the Recreational Disturbance Avoidance and Mitigation Strategy for Ipswich Borough, Babergh District, Mid Suffolk District and East Suffolk</p>	None	None	No

Chapter	Assessment of potential impact on Habitat sites	Habitat sites that could possibly be affected	Likely significant effect identified	AA needed?
	<p>Councils ('RAMS') and draws upon the guidance in the Suffolk Coast Recreational Disturbance Avoidance and Mitigation Strategy (RAMS) Habitat Regulation Assessment (HRA) Record which was developed with Natural England to support the determination of planning applications.</p> <p>The guidance in this chapter seeks to actively deliver alternative recreation opportunities as part of new developments to ensure that new development coming forward does not lead to adverse impacts on the natural environment of East Suffolk, including protected habitat sites. The guidance also seeks to ensure that new development contributes positively to health and wellbeing of future occupiers and existing uses and residents.</p> <p>The guidance in this chapter does not in itself promote new development beyond what will be delivered under other Local Plan policies and will therefore not lead to likely significant effects on Habitat Sites.</p>			

Chapter	Assessment of potential impact on Habitat sites	Habitat sites that could possibly be affected	Likely significant effect identified	AA needed?
Active Travel	<p>This chapter sets out guidance in relation to active travel infrastructure design to encourage walking, cycling and other ‘wheeling’ such as wheelchairs, electric mobility scooters, electric scooters, skateboards etc. It also includes detailed guidance on the key journey types to design for to ensure walkability and cyclability; design standards for accessible and inclusive public rights of way; and cycle parking design.</p> <p>The guidance contained here does not in itself promote new development beyond what is required by Local Plan policy and will therefore not lead to likely significant effects on Habitat Sites.</p>	None	None	No
Healthy Homes, School & Workplaces	<p>This chapter provides guidance on the consideration of health and wellbeing within the design on homes, schools and workplaces. The guidance here covers:</p> <ul style="list-style-type: none"> • Environmental protection • Residential amenity • Lifetime design of homes • Sustainably constructed homes • Tenure-blind homes 	None	None	No

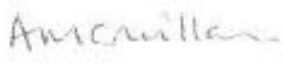
Chapter	Assessment of potential impact on Habitat sites	Habitat sites that could possibly be affected	Likely significant effect identified	AA needed?
	<ul style="list-style-type: none"> • Access to natural green space • Sustainable school travel options • BREEAM health and wellbeing assessment criteria <p>The guidance in this chapter seeks to ensure that new development coming forward in East Suffolk contributes positively to health and wellbeing of future occupiers and existing uses and residents. The guidance in this chapter does not in itself promote new development beyond what will be delivered under other Local Plan policies and will therefore not lead to likely significant effects on Habitat Sites.</p>			
Healthy Centres & Community Facilities	This chapter provides guidance on creating Sustainable communities through the provision of compact, connected and complete local, district and town centres. The guidance encourages high environmental quality, which is inclusive, incorporates legible design and is dementia friendly.	None	None	No

Chapter	Assessment of potential impact on Habitat sites	Habitat sites that could possibly be affected	Likely significant effect identified	AA needed?
	<p>This chapter also provides specific guidance on the design and provision of Wellbeing Hubs based around the One Public Estate model to co-locate services that meet community needs for leisure, education and medical facilities and increase their visibility and use.</p> <p>The guidance in this chapter seeks to ensure that new development coming forward in East Suffolk contributes positively to health and wellbeing of future occupiers and existing uses and residents. The guidance in this chapter does not in itself promote new development beyond what will be delivered under other Local Plan policies and will therefore not lead to likely significant effects on Habitat Sites.</p>			

Chapter	Assessment of potential impact on Habitat sites	Habitat sites that could possibly be affected	Likely significant effect identified	AA needed?
Lifetime Neighbourhoods	<p>This chapter sets out guidance on design and consideration of ‘lifetime neighbourhoods’ to ensure that places are inclusive, and designed so that people of all ages and levels of ability can meet their day-to-day needs. It covers street design, active travel, housing mix, energy efficiency of dwellings, open/ play space provision, education provision. Specific guidance is provided for neighbourhoods that meet the needs of older people.</p> <p>The guidance in this chapter seeks to ensure that new development coming forward in East Suffolk contributes positively to health and wellbeing of future occupiers and existing uses and residents. The guidance in this chapter does not in itself promote new development beyond what will be delivered under other Local Plan policies and will therefore not lead to likely significant effects on Habitat Sites.</p>	None	None	No

6. Summary and conclusions

- 6.1 The draft Healthy Environments Supplementary Planning Document (SPD) provides additional guidance to inform the determination of planning applications alongside the Waveney and Suffolk Coastal Local Plans. The draft Healthy Environments SPD provides information and advice to inform the consideration health and wellbeing in new developments. The guidance contained in the draft SPD will assist in the implementation of Local Plan and Neighbourhood Plan policies for East Suffolk. The SPD, when adopted, will be a material consideration in the determination of applications for planning permission.
- 6.2 Implementation of the Healthy Environments Supplementary Planning Document will not lead to likely significant effects on protected Habitat sites.
- 6.3 Natural England were consulted on a draft of this Screening Statement as statutory nature conservation body. Their response is contained in Appendix 4. Natural England agreed with the conclusion that the Healthy Environments Supplementary Planning Document will not lead to likely significant effects on protected Habitat sites.

Signed: 

Dated: 13 November 2023

Andrea McMillan
Planning Manager (Policy, Delivery and Specialist Services)
East Suffolk Council

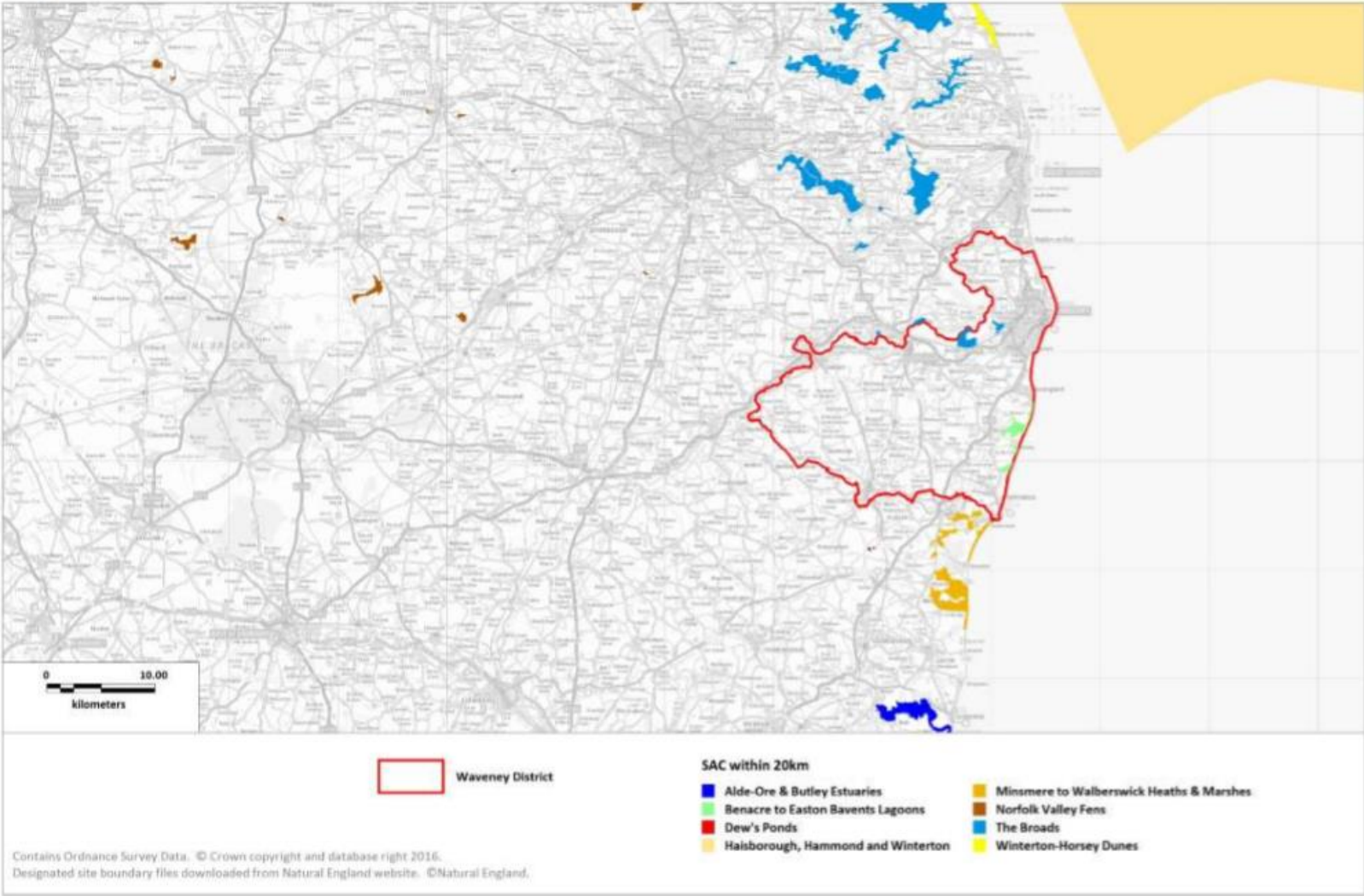
Appendix 1: Sources of background information

- East Suffolk Council – Suffolk Coastal Local Plan (September 2020)
- East Suffolk Council – Waveney Local Plan (March 2019)
- Habitats Regulations Assessment for the Suffolk Coastal Local Plan at Final Draft Plan stage (incorporating Main Modifications) (May 2020)
- The Habitats Regulations Assessment of the Waveney Local Plan (December 2018)
- Habitats Regulations Assessment Recreational Disturbance Avoidance and Mitigation Strategy for Ipswich Borough, Babergh District, Mid Suffolk District and East Suffolk Councils (May 2019)

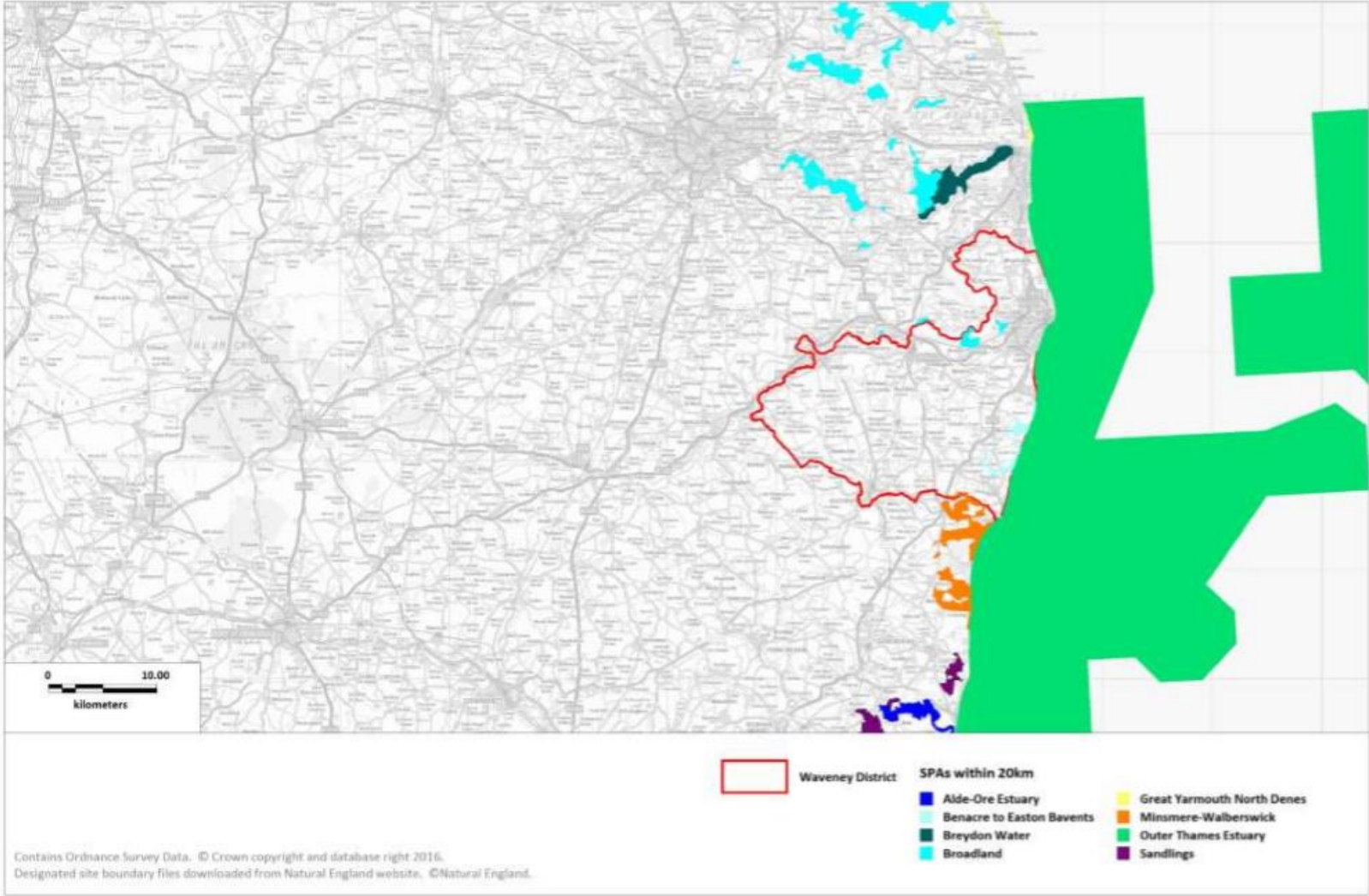
Appendix 2: Locations of Habitat sites

Habitat sites within 20km of the East Suffolk Council-
Waveney Local Plan Area

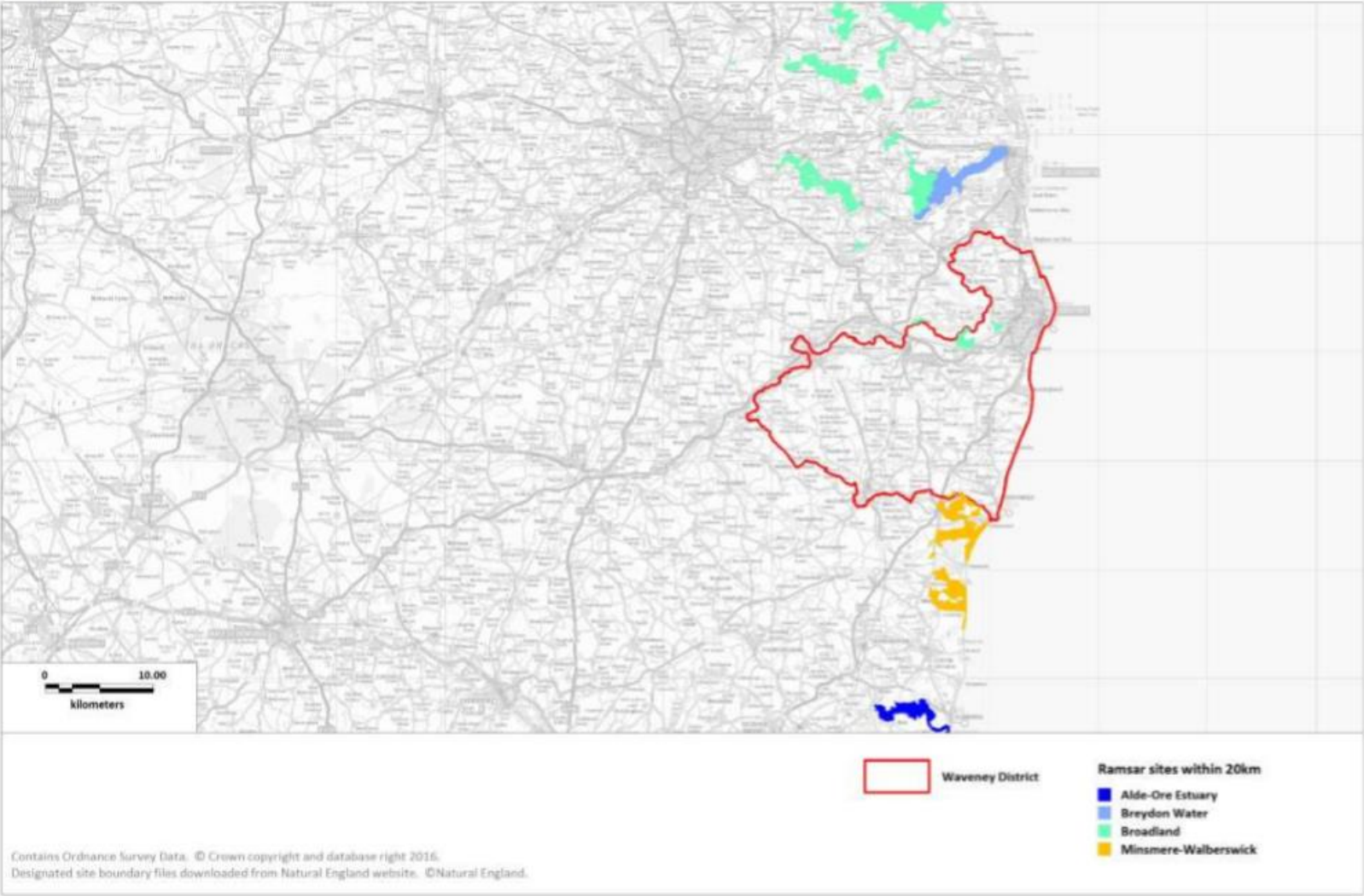
Map 1: SACs



Map 2: SPAs

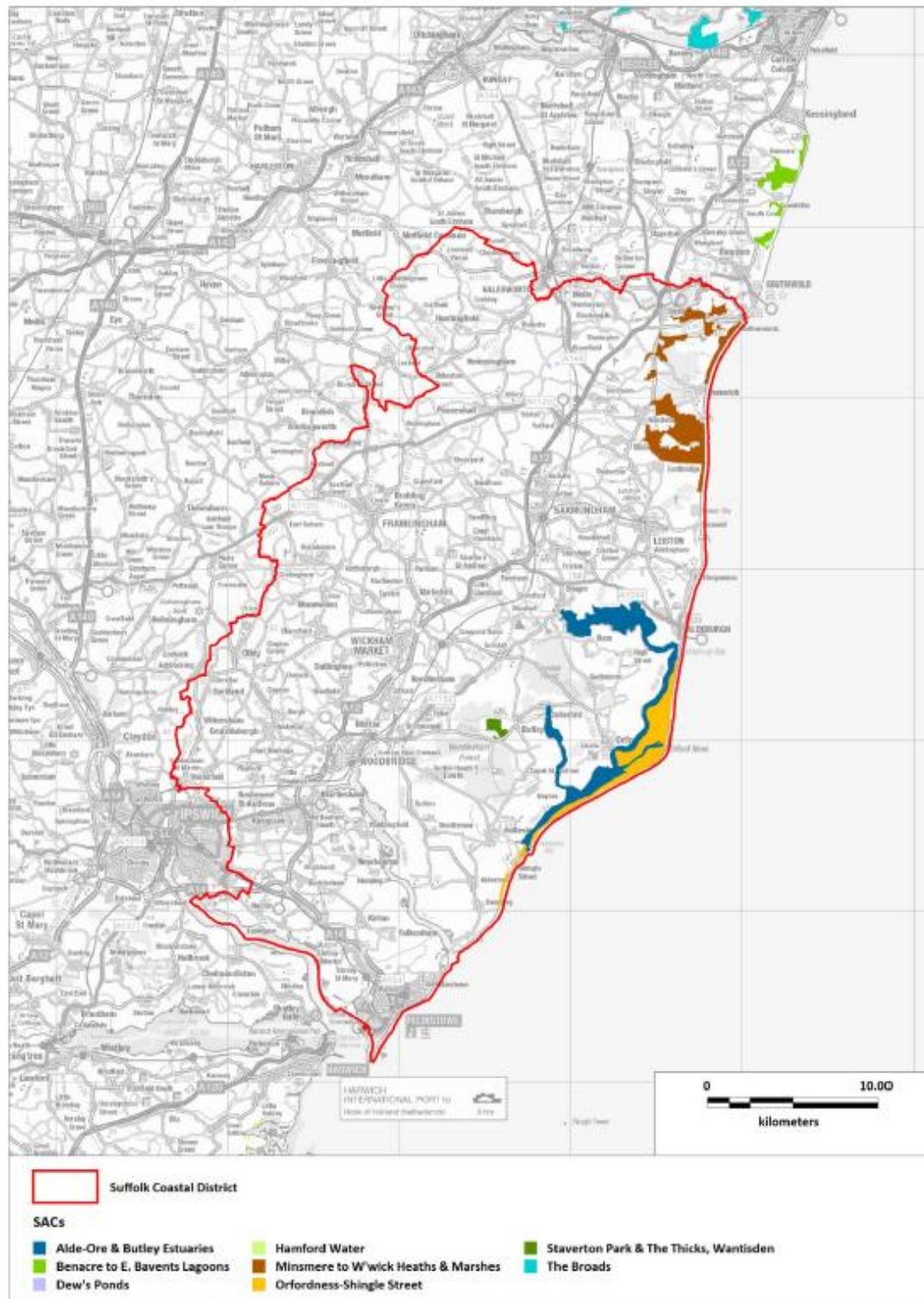


Map 3: Ramsar Sites



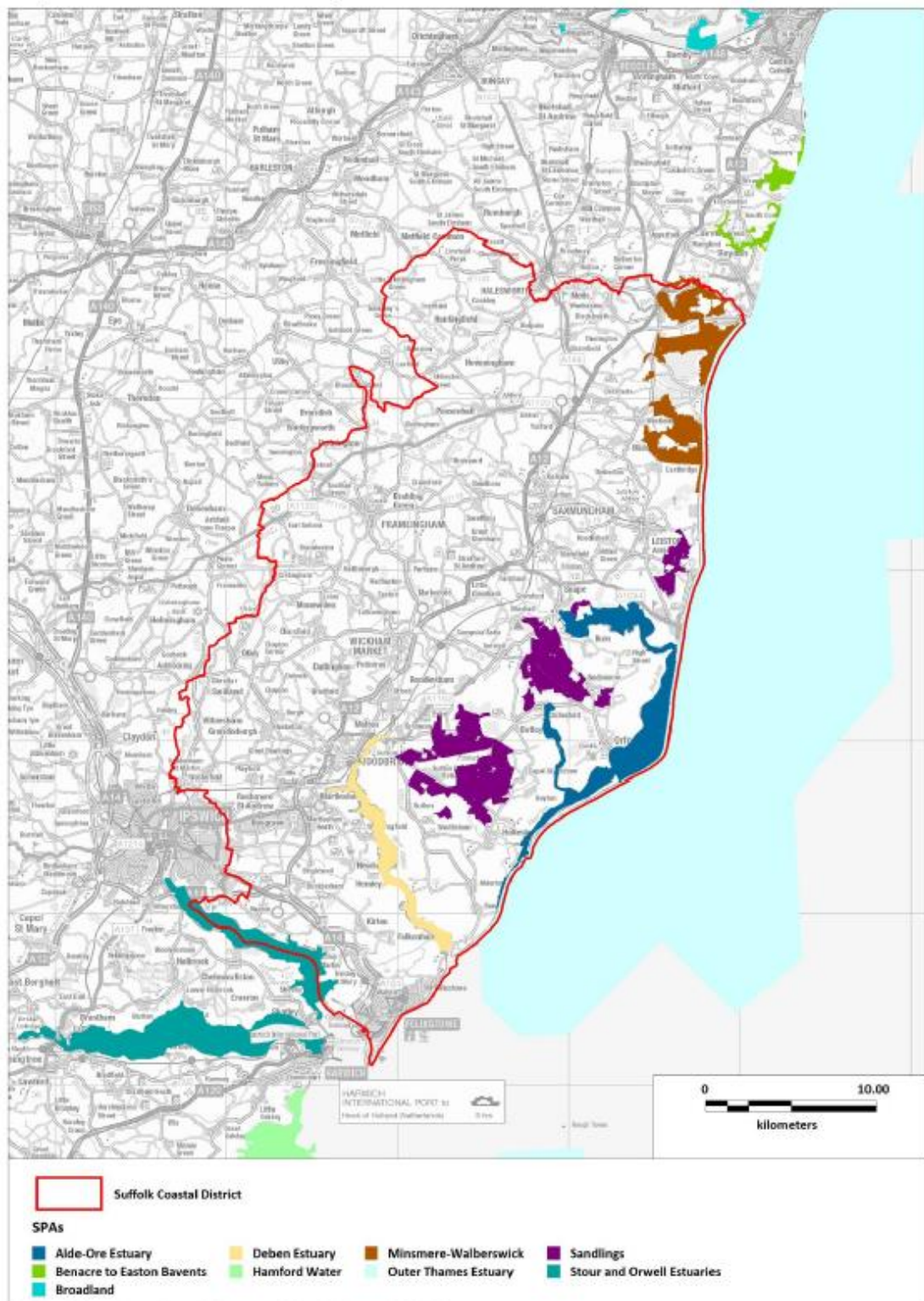
Habitat sites within 20km of the East Suffolk Council- Suffolk Coastal Local Plan Area

Map 1: SAC sites where boundary within 20km of Suffolk Coastal District



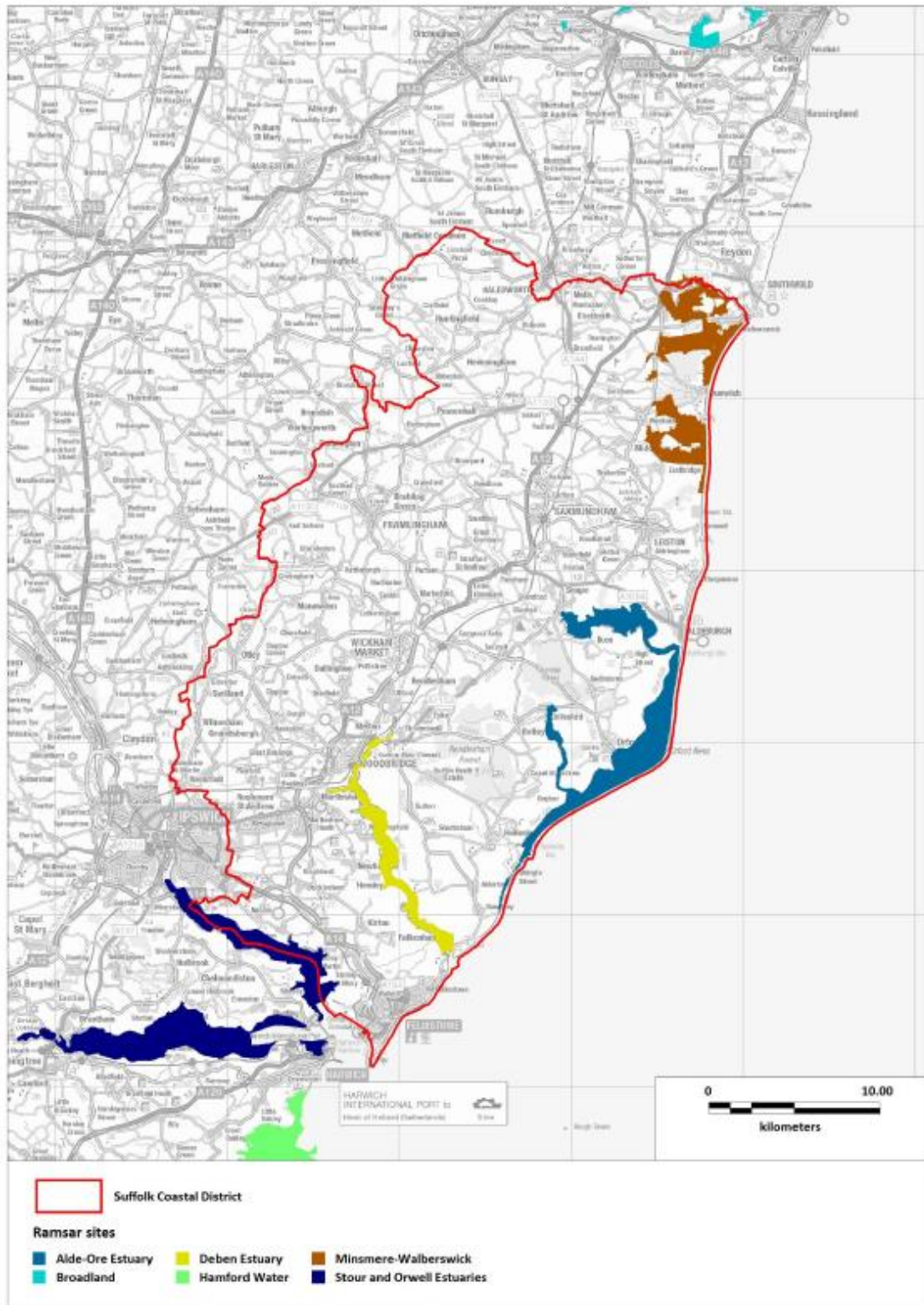
Contains Ordnance Survey Data. © Crown copyright and database right 2017.
 Contains Natural England information © Natural England and Database Right. All rights Reserved.

Map 2: SPA sites where boundary within 20km of Suffolk Coastal District



Contains Ordnance Survey Data. © Crown copyright and database right 2017.
 Contains Natural England Information © Natural England and Database Right. All rights Reserved.

Map 3: Ramsar sites where boundary within 20km of Suffolk Coastal District



Contains Ordnance Survey Data, © Crown copyright and database right 2017.
Contains Natural England Information © Natural England and Database Right. All rights Reserved.

Appendix 3: Relevant Habitat sites

Name	Qualifying features	Conservation Objectives	Pressure and threats (as summarised in the Habitats Regulations Assessment for the Suffolk Coastal Local Plan at Final Draft Plan Stage (December 2018))
Special Areas of Conservation			
Alde-Ore and Butley Estuaries	H1130: Estuaries H1140: Mudflats and sandflats not covered by seawater at low tide; Intertidal mudflats and sandflats H1330: Atlantic salt meadows	Ensure that the integrity of the site is maintained or restored as appropriate, and ensure that the site contributes to achieving the Favourable Conservation Status of its Qualifying Features by maintaining or restoring: The extent and distribution of qualifying natural habitats; The structure and function (including typical species) of qualifying natural habitats; The supporting processes on which qualifying natural habitats rely.	Hydrological changes, public access/disturbance, inappropriate coastal management, coastal squeeze, inappropriate pest control, changes in species distributions, invasive species, air pollution, fisheries (commercial marine and estuarine) (Alde-Ore and Butley Estuaries SAC and Alde-Ore SPA)
Benacre to Easton Barents Lagoons	H1150# Coastal lagoons, A195(B) <i>Sterna albifrons</i> : Little tern A021(B) <i>Botaurus stellaris</i> : Great bittern A081(B) <i>Circus aeruginosus</i> : Eurasian marsh harrier	Ensure that the integrity of the site is maintained or restored as appropriate, and ensure that the site contributes to achieving the Favourable Conservation Status of its Qualifying Features, by maintaining or restoring; The extent and distribution of qualifying natural habitats,	Public access/disturbance, water pollution, physical modification, changes in species distributions, fisheries (marine and estuarine).

		The structure and function (including typical species) of qualifying natural habitats, and, The supporting processes on which qualifying natural habitats rely.	
Dew's Ponds	S1166 Triturus cristatus: Great crested newt	Ensure that the integrity of the site is maintained or restored as appropriate, and ensure that the site contributes to achieving the Favourable Conservation Status of its Qualifying Features, by maintaining or restoring; The extent and distribution of the habitats of qualifying species, The structure and function of the habitats of qualifying species, The supporting processes on which the habitats of qualifying species rely, The populations of qualifying species, and, The distribution of qualifying species within the site.	None identified.
Haisborough, Hammond and Winterton	H1110 Sandbanks which are slightly covered by sea water all the time H1170 Reefs	The Conservation Objective for the Haisborough, Hammond and Winterton cSAC is to maintain the Annex I Sandbanks which are slightly covered by seawater all the time in Favourable Condition, and maintain or restore the Annex I reefs in Favourable Condition.	Feature location/extent/condition unknown, fisheries (commercial marine and estuarine)
Minsmere to Walberswick Heaths and Marshes	H4030 European dry heaths H1210 Annual vegetation of drift lines	Ensure that the integrity of the site is maintained or restored as appropriate, and ensure that the site contributes to	Coastal squeeze, public access/disturbance, changes in species distributions, invasive species,

	<p>H1220 Perennial vegetation of stony banks A052(B) <i>Anas crecca</i>: Eurasian teal A021(B) <i>Botaurus stellaris</i>: Great bittern A081(B) <i>Circus aeruginosus</i>: Eurasian marsh harrier A082(NB) <i>Circus cyaneus</i>: Hen harrier A224(B) <i>Caprimulgus europaeus</i>: European nightjar A056(B) <i>Anas clypeata</i>: Northern shoveler A056(NB) <i>Anas clypeata</i>: Northern shoveler A051(B) <i>Anas strepera</i>: Gadwall A051(NB) <i>Anas strepera</i>: Gadwall A132(B) <i>Recurvirostra avosetta</i>: Pied avocet A195(B) <i>Sterna albifrons</i>: Little tern A394(NB) <i>Anser albifrons albifrons</i>: Greater white-fronted goose</p>	<p>achieving the Favourable Conservation Status of its Qualifying Features, by maintaining or restoring; The extent and distribution of qualifying natural habitats and habitats, The structure and function (including typical species) of qualifying natural habitats, and, The supporting processes on which qualifying natural habitats rely.</p>	<p>inappropriate pest control, air pollution, water pollution, deer, fisheries (commercial marine and estuarine)</p>
<p>Norfolk Valley Fens</p>	<p>H7210# Calcareous fens with <i>Cladium mariscus</i> and species of the <i>Caricion davallianae</i> S1014 <i>Vertigo angustior</i>: Narrow-mouthed whorl snail</p>	<p>Ensure that the integrity of the site is maintained or restored as appropriate, and ensure that the site contributes to achieving the Favourable Conservation Status of its Qualifying Features, by</p>	<p>Inappropriate water levels, inappropriate scrub control, hydrological changes, water pollution, inappropriate cutting/mowing, water abstraction, undergrazing, overgrazing, invasive species, change in</p>

	<p>H6210# Semi-natural dry grasslands and scrubland facies: on calcareous substrates (Festuco-Brometalia) S1016 Vertigo moulinsiana: Desmoulin`s whorl snail H4030 European dry heaths H7230 Alkaline fens H6410 Molinia meadows on calcareous, peaty or clayey-silt-laden soils (Molinion caeruleae) H91E0# Alluvial forests with Alnus glutinosa and Fraxinus excelsior (AlnoPadion, Alnion incanae, Salicion albae) H4010 Northern Atlantic wet heaths with Erica tetralix</p>	<p>maintaining or restoring; The extent and distribution of qualifying natural habitats and habitats of qualifying Species; The structure and function (including typical species) of qualifying natural habitats; The structure and function of the habitats of qualifying species; The supporting processes on which qualifying natural habitats and the habitats of qualifying species rely; The populations of qualifying species, and, The distribution of qualifying species within the site.</p>	<p>land management, changes in species distributions, air pollution.</p>
<p>Orfordness – Shingle Street</p>	<p>H1150: Coastal Lagoons H1210: Annual vegetation of drift lines H1220: Perennial vegetation of stony banks; Coastal shingle vegetation outside the reach of waves</p>	<p>Ensure that the integrity of the site is maintained or restored as appropriate, and ensure that the site contributes to achieving the Favourable Conservation Status of its Qualifying Features by maintaining or restoring: The extent and distribution of qualifying natural habitats; The structure and function (including typical species) of qualifying natural habitats; and The supporting processes on which qualifying natural habitats rely.</p>	<p>Not identified in Suffolk Coastal Final Draft Local Plan HRA.</p>

Southern North Sea	Harbour Porpoise (<i>phocoena phocoena</i>)	To ensure that the integrity of the site is maintained and that it makes an appropriate contribution to maintaining Favourable Conservation Status (FCS) for harbour porpoise in UK waters.	N/A
Staverton Park and The Thicks, Wantisden	H9190: Old acidophilous oak woods with <i>Quercus robur</i> on sandy plains; Dry oak-dominated woodland.	Ensure that the integrity of the site is maintained or restored as appropriate, and ensure that the site contributes to achieving the Favourable Conservation Status of its Qualifying Features by maintaining or restoring: The extent and distribution of qualifying natural habitats; The structure and function (including typical species) of qualifying natural habitats; and The supporting processes on which qualifying natural habitats rely.	Woodland management, disease, atmospheric pollution.
The Broads	H7210# Calcareous fens with <i>Cladium mariscus</i> and species of the <i>Caricion davallianae</i> S1016 <i>Vertigo moulinsiana</i> : Desmoulin's whorl snail H7230 Alkaline fens H6410 <i>Molinia</i> meadows on calcareous, peaty or clayey-silt-laden soils (<i>Molinia caerulea</i>) H91E0# Alluvial forests with <i>Alnus glutinosa</i> and <i>Fraxinus excelsior</i>	Ensure that the integrity of the site is maintained or restored as appropriate, and ensure that the site contributes to achieving the Favourable Conservation Status of its Qualifying Features, by maintaining or restoring; The extent and distribution of qualifying natural habitats and habitats of qualifying species, The structure and function (including typical species) of qualifying natural habitats,	Water pollution, climate change, invasive species, siltation, inappropriate water levels, hydrological changes, water abstraction, change in land management, inappropriate ditch management, inappropriate scrub control, changes in species distributions, public access/disturbance, undergrazing, drainage, direct impact from 3rd party

	(Alno-Padion, Alnion incanae, Salicion albae) H7140 Transition mires and quaking bogs H3140 Hard oligo-mesotrophic waters with benthic vegetation of Chara spp H3150 Natural eutrophic lakes with Magnopotamion or Hydrocharition-type vegetation S1355 Lutra lutra: Otter S1903 Liparis loeselii: Fen orchid S4056 Anisus vorticulus: Little ramshorn whirlpool snail	The structure and function of the habitats of qualifying species, The supporting processes on which qualifying natural habitats and the habitats of qualifying species rely, The populations of qualifying species, and, The distribution of qualifying species within the site.	
Winterton - Horsey Dunes	H2110 Embryonic shifting dunes H2120 Shifting dunes along the shoreline with Ammophila arenaria ("white dunes") H2150# Atlantic decalcified fixed dunes (Calluno-Ulicetea) H2190 Humid dune slacks, A195(B) Sterna albifrons: Little Tern	Ensure that the integrity of the site is maintained or restored as appropriate, and ensure that the site contributes to achieving the Favourable Conservation Status of its Qualifying Features by maintaining or restoring: The extent and distribution of qualifying natural habitats; The structure and function (including typical species) of qualifying natural habitats; and The supporting processes on which qualifying natural habitats rely.	Inappropriate coastal management, coastal squeeze, public access/ disturbance, hydrological changes, inappropriate scrub control, inappropriate pest control, invasive species, undergrazing, air pollution.
Special Protection Areas			
Alde-Ore Estuary (also Ramsar site)	A081: Eurasian marsh harrier (breeding)	Ensure that the integrity of the site is maintained or restored as appropriate,	Hydrological changes, public access/disturbance, inappropriate coastal

	<p>A132: Pied avocet (non-breeding) A132: Pied avocet (breeding) A151: Ruff (non-breeding) A162: Common redshank (non-breeding) A183: Lesser black-backed gull (breeding) A191: Sandwich tern (breeding) A195: Little tern (breeding)</p>	<p>and ensure that the site contributes to achieving the aims of the Wild Birds Directive, by maintaining or restoring: The extent and distribution of the habitats of the qualifying features; The structure and function of the habitats of the qualifying features; The supporting processes on which the habitats of the qualifying features rely; The population of each of the qualifying features; and The distribution of the qualifying features within the site.</p>	<p>management, coastal squeeze, inappropriate pest control, changes in species distributions, invasive species, air pollution, fisheries (commercial marine and estuarine) (Alde-Ore and Butley Estuaries SAC and Alde-Ore SPA)</p>
<p>Benacre to Easton Barents</p>	<p>H1150# Coastal lagoons, A195(B) <i>Sterna albifrons</i>: Little tern A021(B) <i>Botaurus stellaris</i>: Great bittern A081(B) <i>Circus aeruginosus</i>: Eurasian marsh harrier</p>	<p>Ensure that the integrity of the site is maintained or restored as appropriate, and ensure that the site contributes to achieving the aims of the Wild Birds Directive, by maintaining or restoring; The extent and distribution of the habitats of the qualifying features, The structure and function of the habitats of the qualifying features, The supporting processes on which the habitats of the qualifying features rely, The population of each of the qualifying features, and, The distribution of the qualifying features within the site.</p>	<p>Public access/disturbance, water pollution, physical modification, changes in species distributions, fisheries (marine and estuarine).</p>

<p>Breydon Water (also Ramsar Site)</p>	<p>Waterbird assemblage A037(NB) Cygnus columbianus bewickii: Bewick swan A132(NB) Recurvirostra avosetta: Pied avocet A140(NB) Pluvialis apricaria : European golden plover A142(NB) Vanellus vanellus: Northern lapwing A151(NB) Philomachus pugnax: Ruff A193(B) Sterna hirundo: Common tern</p>	<p>Ensure that the integrity of the site is maintained or restored as appropriate, and ensure that the site contributes to achieving the aims of the Wild Birds Directive, by maintaining or restoring; The extent and distribution of the habitats of the qualifying features, The structure and function of the habitats of the qualifying features, The supporting processes on which the habitats of the qualifying features rely, The population of each of the qualifying features, and, The distribution of the qualifying features within the site.</p>	<p>Shooting/scaring, change in land management, public access/disturbance, hydrological changes, fisheries (marine and estuarine).</p>
<p>Broadlands (also Ramsar site)</p>	<p>H7210# Calcareous fens with Cladium mariscus and species of the Caricion davallianae S1016 Vertigo moulinsiana: Desmoulin`s whorl snail H7230 Alkaline fens H6410 Molinia meadows on calcareous, peaty or clayey-silt-laden soils (Molinion caeruleae) H91E0# Alluvial forests with Alnus glutinosa and Fraxinus excelsior (Alno-Padion, Alnion incanae, Salicion albae) H7140 Transition mires and quaking bogs</p>	<p>Ensure that the integrity of the site is maintained or restored as appropriate, and ensure that the site contributes to achieving the Favourable Conservation Status of its Qualifying Features, by maintaining or restoring; The extent and distribution of qualifying natural habitats and habitats of qualifying species, The structure and function (including typical species) of qualifying natural habitats, The structure and function of the habitats of qualifying species,</p>	<p>Water pollution, climate change, invasive species, siltation, inappropriate water levels, hydrological changes, water abstraction, change in land management, inappropriate ditch management, inappropriate scrub control, changes in species distributions, public access/disturbance, undergrazing, drainage, direct impact from 3rd party</p>

	<p>H3140 Hard oligo-mesotrophic waters with benthic vegetation of Chara spp H3150 Natural eutrophic lakes with Magnopotamion or Hydrocharition-type vegetation S1355 Lutra lutra: Otter S1903 Liparis loeselii: Fen orchid S4056 Anisus vorticulus: Little ramshorn whirlpool snail</p>	<p>The supporting processes on which qualifying natural habitats and the habitats of qualifying species rely, The populations of qualifying species, and, The distribution of qualifying species within the site.</p>	
<p>Deben Estuary (also Ramsar site)</p>	<p>A046a: Dark bellied brent goose (non-breeding) A132: Pied avocet (non-breeding)</p>	<p>Ensure that the integrity of the site is maintained or restored as appropriate, and ensure that the site contributes to achieving the aims of the Wild Birds Directive, by maintaining or restoring: The extent and distribution of the habitats of the qualifying features; The structure and function of the habitats of the qualifying features; The supporting processes on which the habitats of the qualifying features rely; The population of each of the qualifying features; and The distribution of the qualifying features within the site.</p>	<p>Coastal squeeze, disturbance to birds, water and air pollution.</p>
<p>Great Yarmouth North Denes</p>	<p>A195 Sterna albifrons; Little tern (Breeding)</p>	<p>Ensure that the integrity of the site is maintained or restored as appropriate, and ensure that the site contributes to</p>	<p>Inappropriate coastal management, coastal squeeze, public access/disturbance, hydrological changes, inappropriate scrub control, inappropriate</p>

		<p>achieving the aims of the Wild Birds Directive, by maintaining or restoring; The extent and distribution of the habitats of the qualifying features, The structure and function of the habitats of the qualifying features, The supporting processes on which the habitats of the qualifying features rely, The population of each of the qualifying features, and, The distribution of the qualifying features within the site.</p>	<p>pest control, invasive species, undergrazing, air pollution.</p>
Outer Thames Estuary	<p>A001: Red-throated Diver (Non-breeding) A195: Common Tern (Breeding) A193: Little Tern (Breeding)</p>	<p>Ensure that the integrity of the site is maintained or restored as appropriate, and ensure that the site contributes to achieving the aims of the Wild Birds Directive, by maintaining or restoring: The extent and distribution of the habitats of the qualifying features; The structure and function of the habitats of the qualifying features; The supporting processes on which the habitats of the qualifying features rely; The population of each of the qualifying features; and The distribution of the qualifying features within the site.</p>	<p>Not identified in Suffolk Coastal Final Draft Local Plan HRA. SIP identifies fisheries.</p>
Minsmere to Walberswick (also Ramsar site)	<p>H4030 European dry heaths H1210 Annual vegetation of drift lines</p>	<p>Ensure that the integrity of the site is maintained or restored as appropriate, and ensure that the site contributes to</p>	<p>Coastal squeeze, public access/disturbance, changes in species distributions, invasive species,</p>

	<p>H1220 Perennial vegetation of stony banks A052(B) <i>Anas crecca</i>: Eurasian teal A021(B) <i>Botaurus stellaris</i>: Great bittern A081(B) <i>Circus aeruginosus</i>: Eurasian marsh harrier A082(NB) <i>Circus cyaneus</i>: Hen harrier A224(B) <i>Caprimulgus europaeus</i>: European nightjar A056(B) <i>Anas clypeata</i>: Northern shoveler A056(NB) <i>Anas clypeata</i>: Northern shoveler A051(B) <i>Anas strepera</i>: Gadwall A051(NB) <i>Anas strepera</i>: Gadwall A132(B) <i>Recurvirostra avosetta</i>: Pied avocet A195(B) <i>Sterna albifrons</i>: Little tern A394(NB) <i>Anser albifrons albifrons</i>: Greater white-fronted goose</p>	<p>achieving the aims of the Wild Birds Directive, by maintaining or restoring; The extent and distribution of the habitats of the qualifying features, The structure and function of the habitats of the qualifying features, The supporting processes on which the habitats of the qualifying features rely, The population of each of the qualifying features, and, The distribution of the qualifying features within the site.</p>	<p>inappropriate pest control, air pollution, water pollution, deer, fisheries (commercial marine and estuarine)</p>
<p>Outer Thames Estuary</p>	<p>A001 (W) <i>Gavia stellate</i> Red-throated Diver A195 (B) <i>Sterna hirundo</i> Common Tern</p>	<p>Ensure that the integrity of the site is maintained or restored as appropriate, and ensure that the site contributes to achieving the aims of the Wild Birds Directive, by maintaining or restoring;</p>	<p>Not identified in Suffolk Coastal Final Draft Local Plan HRA. SIP identifies fisheries.</p>

	A193 (B) <i>Sternula albifrons</i> Little Tern	The extent and distribution of the habitats of the qualifying features, The structure and function of the habitats of the qualifying features, The supporting processes on which the habitats of the qualifying features rely, The population of each of the qualifying features, and, The distribution of the qualifying features within the site.	
Sandlings	A224: European nightjar (breeding) A246: Woodlark (breeding)	Ensure that the integrity of the site is maintained or restored as appropriate, and ensure that the site contributes to achieving the aims of the Wild Birds Directive, by maintaining or restoring: The extent and distribution of the habitats of the qualifying features; The structure and function of the habitats of the qualifying features; The supporting processes on which the habitats of the qualifying features rely; The population of each of the qualifying features; and The distribution of the qualifying features within the site.	Changes in species distributions, inappropriate scrub control, deer, air pollution, public access/disturbance.
Stour and Orwell Estuaries (also Ramsar site)	A046a: Dark bellied brent goose (non-breeding) A054: Northern pintail (non-breeding) A132: Pied avocet (non-breeding)	Ensure that the integrity of the site is maintained or restored as appropriate, and ensure that the site contributes to achieving the aims of the Wild Birds Directive, by maintaining or restoring:	Coastal squeeze, disturbance to birds, air pollution and new development.

	<p>A141: Grey plover (non-breeding) A143: Red knot (non-breeding) A149: Dunlin (non-breeding) A156: Black-tailed godwit (non-breeding) A162: Common redshank (non-breeding) Waterbird assemblage</p>	<p>The extent and distribution of the habitats of the qualifying features; The structure and function of the habitats of the qualifying features; The supporting processes on which the habitats of the qualifying features rely; The population of each of the qualifying features; and The distribution of the qualifying features within the site.</p>	
--	---	---	--

Appendix 4: Natural England Consultation Response

Date: 09 November 2023
Our ref: 450802



Laura Mundy
East Suffolk Council

BY EMAIL ONLY

Hornbeam House
Crewe Business Park
Electra Way
Crewe
Cheshire
CW1 6GJ

T 0300 060 3900

Dear Laura Mundy

East Suffolk Local Plan - draft Healthy Environments Supplementary Planning Document - draft Strategic Environmental Assessment screening opinion & HRA Screening Opinion

Thank you for your consultation on the above dated 15 September 2023 which was received by Natural England on the same date.

Natural England is a non-departmental public body. Our statutory purpose is to ensure that the natural environment is conserved, enhanced, and managed for the benefit of present and future generations, thereby contributing to sustainable development.

Screening Request: Strategic Environmental Assessment (SEA) and Habitats Regulations Assessment (HRA)

It is Natural England's advice, on the basis of the material supplied with the consultation, that:

- **significant effects on statutorily designated nature conservation sites or landscapes are unlikely; and,**
- **significant effects on Habitats sites¹, either alone or in combination, are unlikely.**

The proposed Supplementary Planning Document is unlikely to significantly affect any Site of Special Scientific Interest (SSSI), Marine Conservation Zone (MCZ), Special Areas of Conservation (SAC), Special Protection areas (SPA), Ramsar wetland or sites in the process of becoming SACs or SPAs ('candidate SACs', 'possible SACs', 'potential SPAs') or a Ramsar wetland. The plan area is unlikely to have a significant effect on a National Park, Area of Outstanding Natural Beauty or Heritage Coast, and is unlikely to impact upon the purposes for which these areas are designated or defined.

Natural England agrees with the conclusions of the report that it is not likely there will be significant environmental effects arising from the policies in the plan, which have not already been accounted for within the adopted local plan. Therefore, the Healthy Environments Supplementary Planning Document does not require further SEA work to be undertaken. Natural England also agrees that the SPD would be unlikely to result in significant effects to European Sites, either alone or in combination, and therefore an appropriate assessment under the Habitats Regulations is not required.

¹ Habitats sites are those referred to in the [National Planning Policy Framework](#) (Annex 2 - glossary) as "any site which would be included within the definition at regulation 8 of the Conservation of Habitats and Species Regulations 2017 for the purpose of those regulations, including candidate Special Areas of Conservation, Sites of Community Importance, Special Areas of Conservation, Special Protection Areas and any relevant Marine Sites".

Natural England reserves the right to provide further advice on the environmental assessment of the plan. This includes any third party appeal against any screening decision you may make. If a SEA is required, Natural England must be consulted at the scoping and environmental report stages.

Please send any new consultations, or further information on this consultation to



Yours sincerely

Alejandra Hart
Norfolk & Suffolk Team