

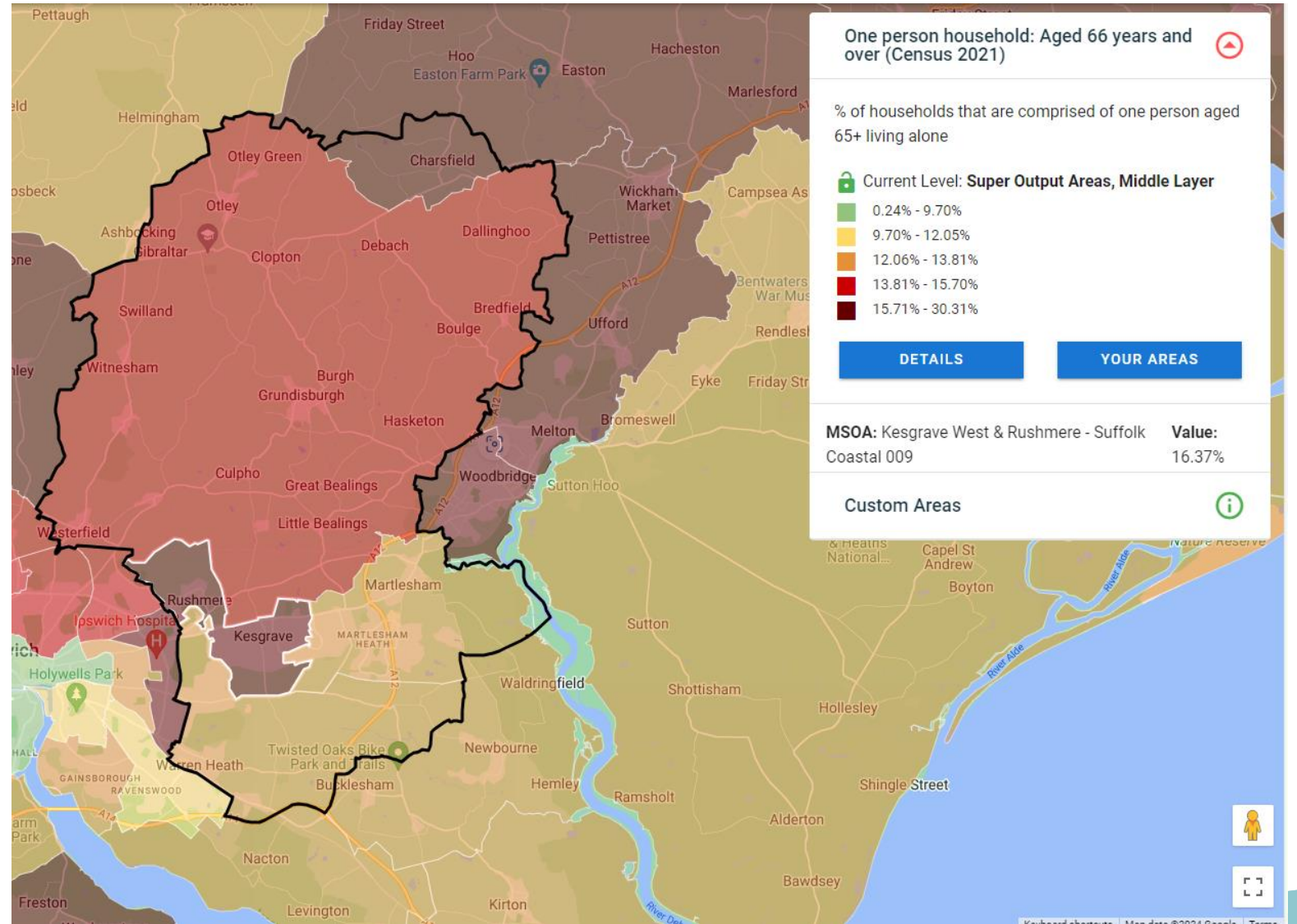
# Data review – 24/25

Kesgrave, Martlesham, Rushmere St Andrew, Purdis Farm,  
Carlford and Fynn Valley Community Partnership

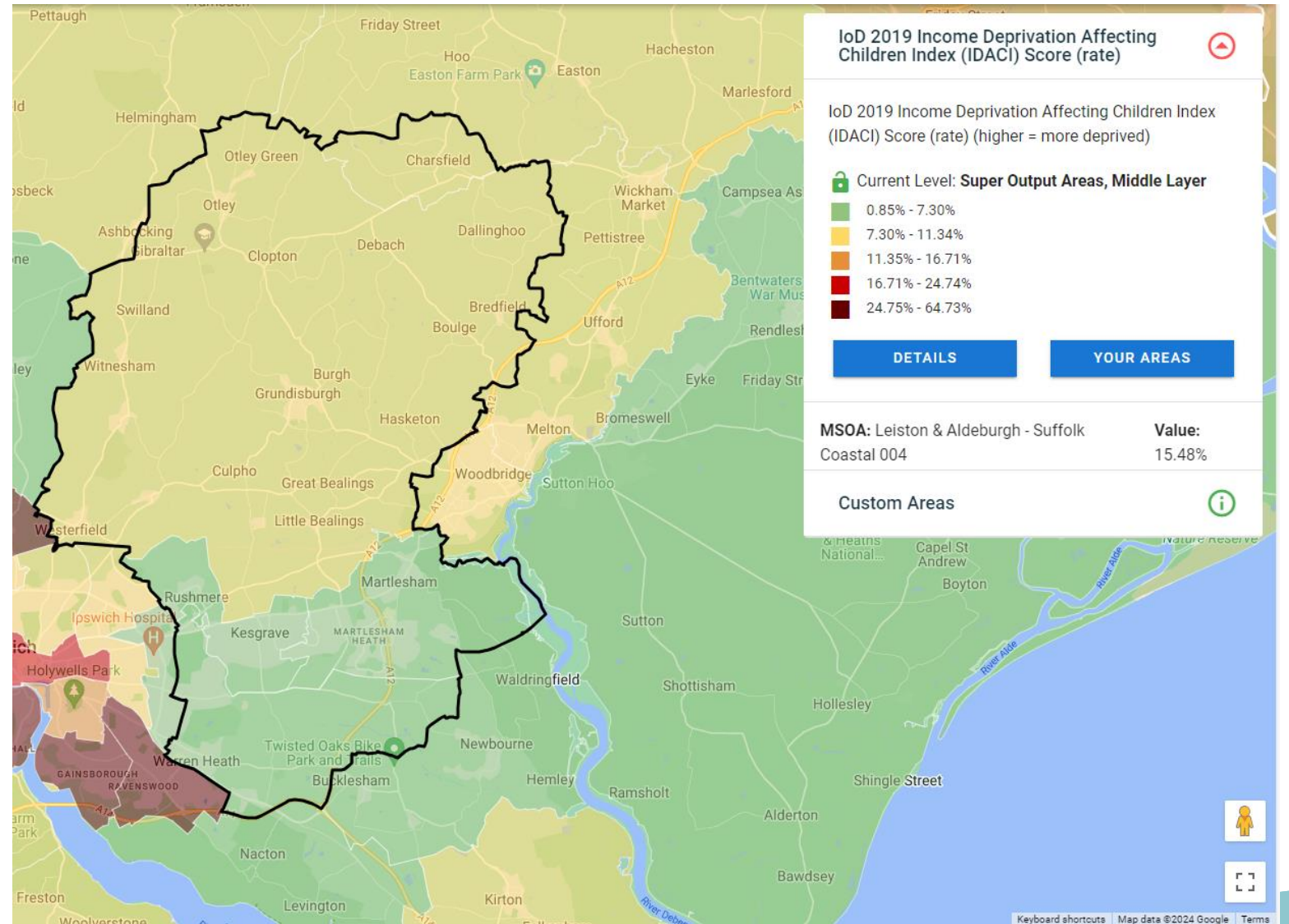


- The following data is collated from a series of sources, including [Local Insight](#)
- The data included in this pack focuses on potential areas of concern and does not summarise data showing a strong position. The entire data set can be found via the link above.

# Health

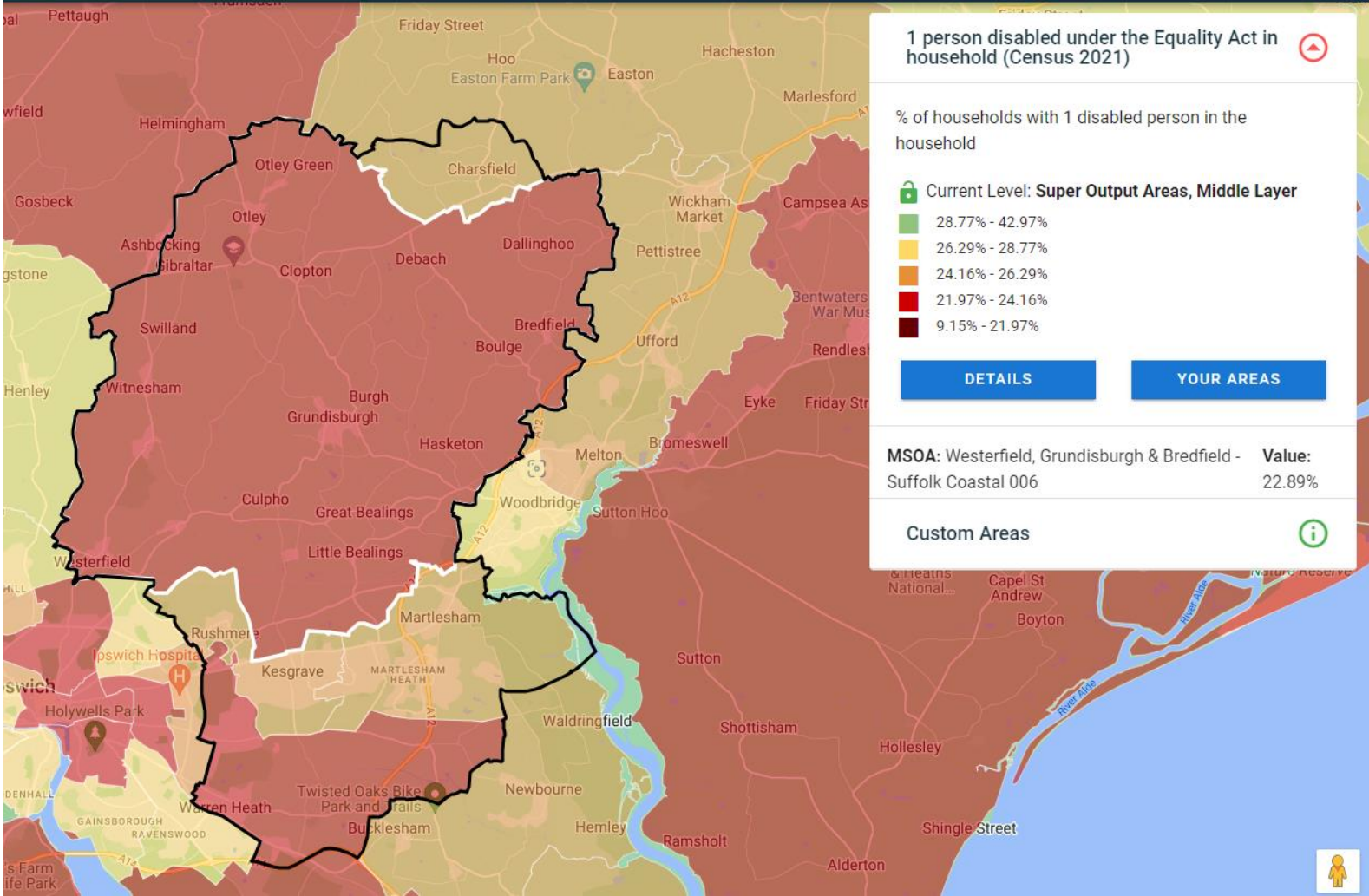


Deprivation amongst children highest in CFV

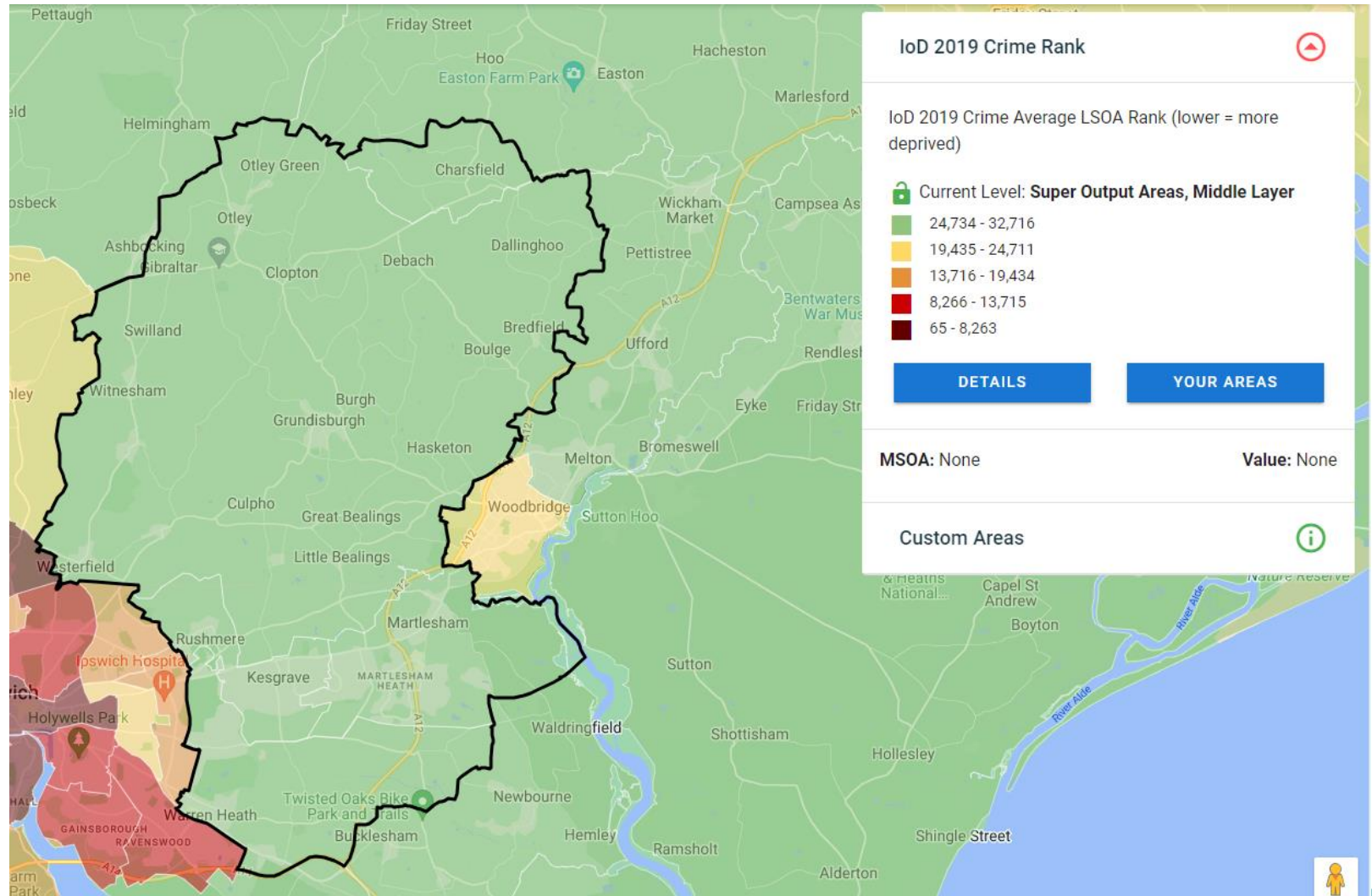




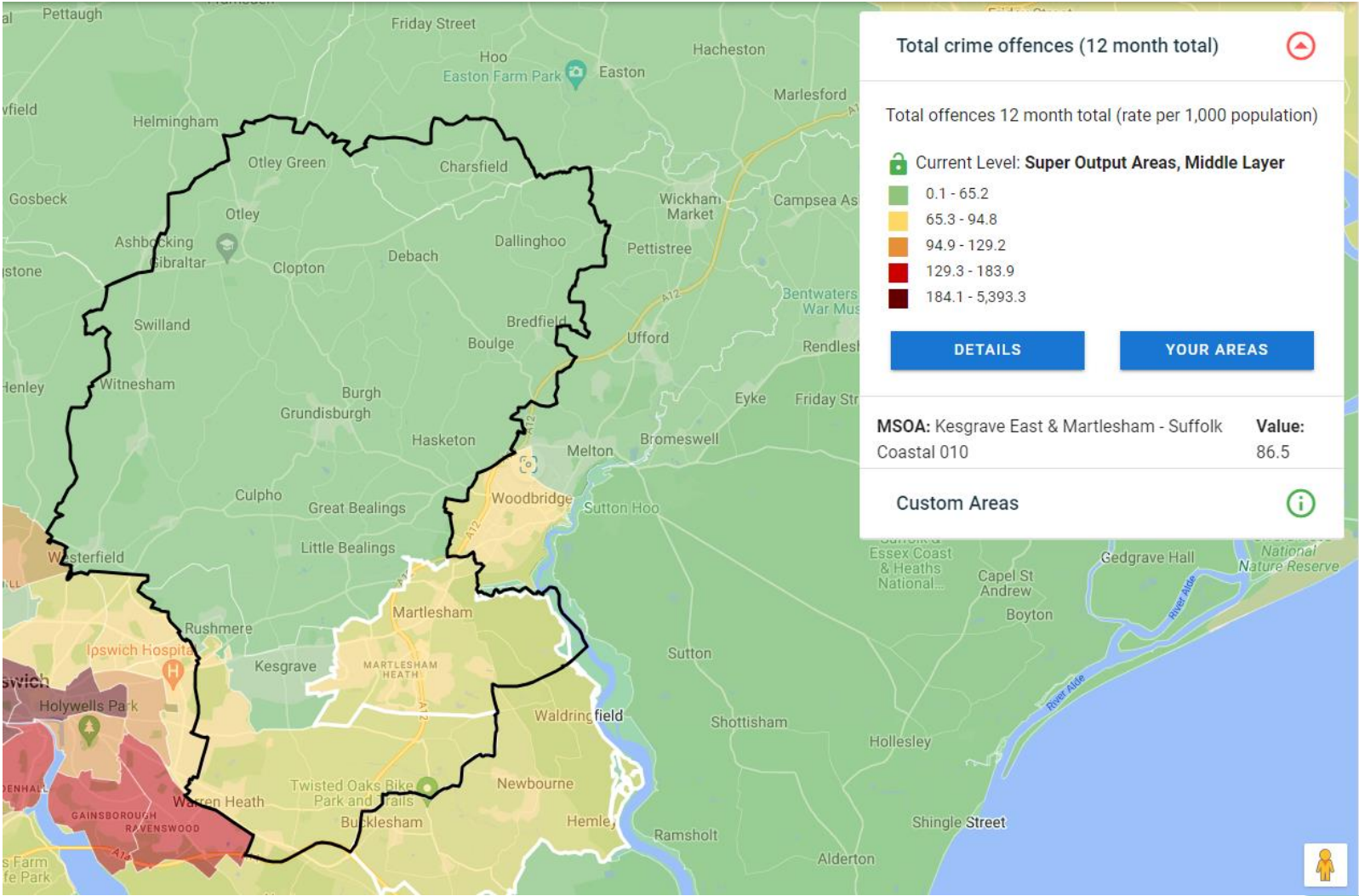
1 in 5 households in CFV with a person with a disability



Lower crime levels than Suffolk average across the CP

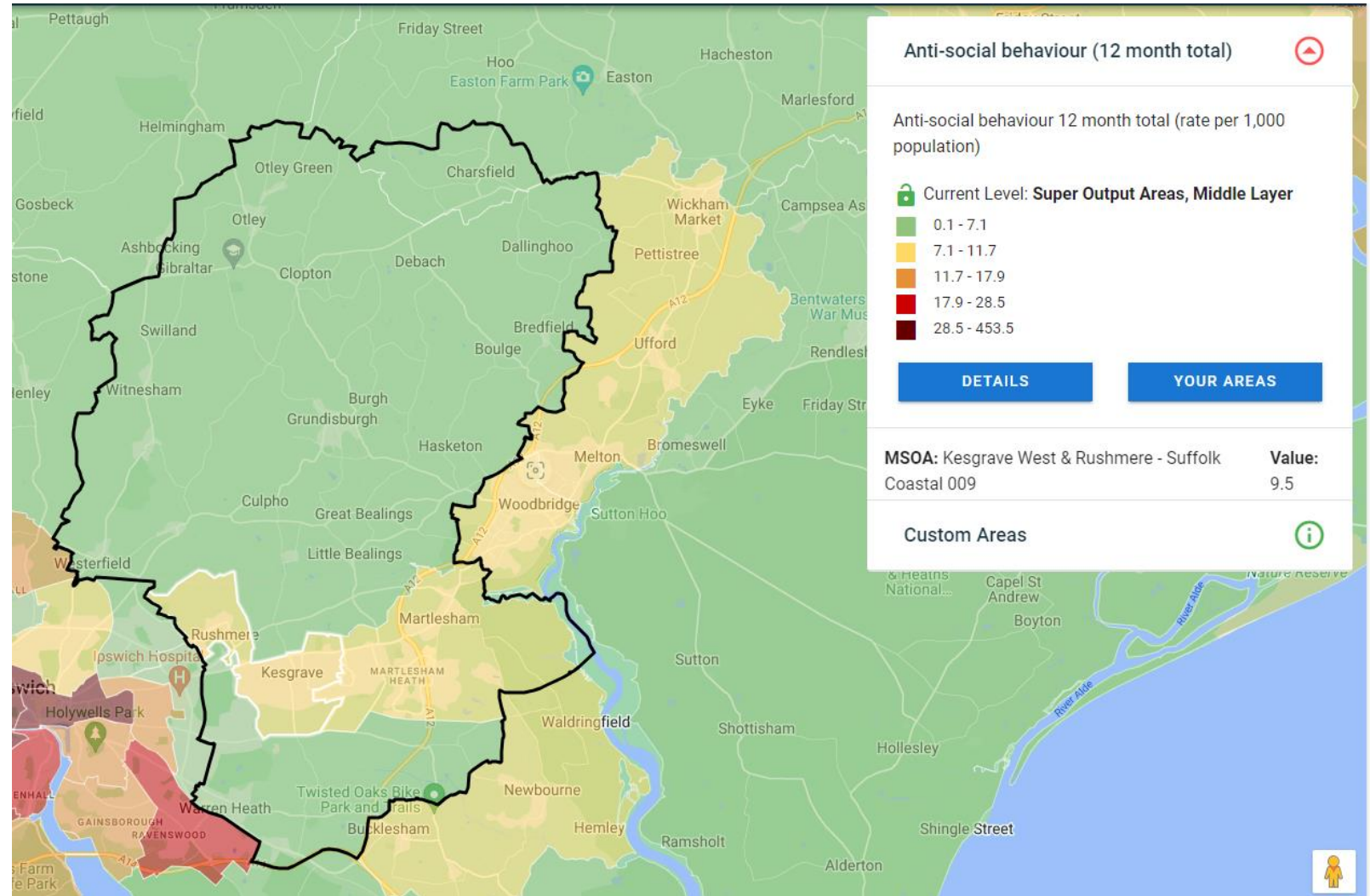


Martlesham highest crime rate, linked to offences listed at the PIC



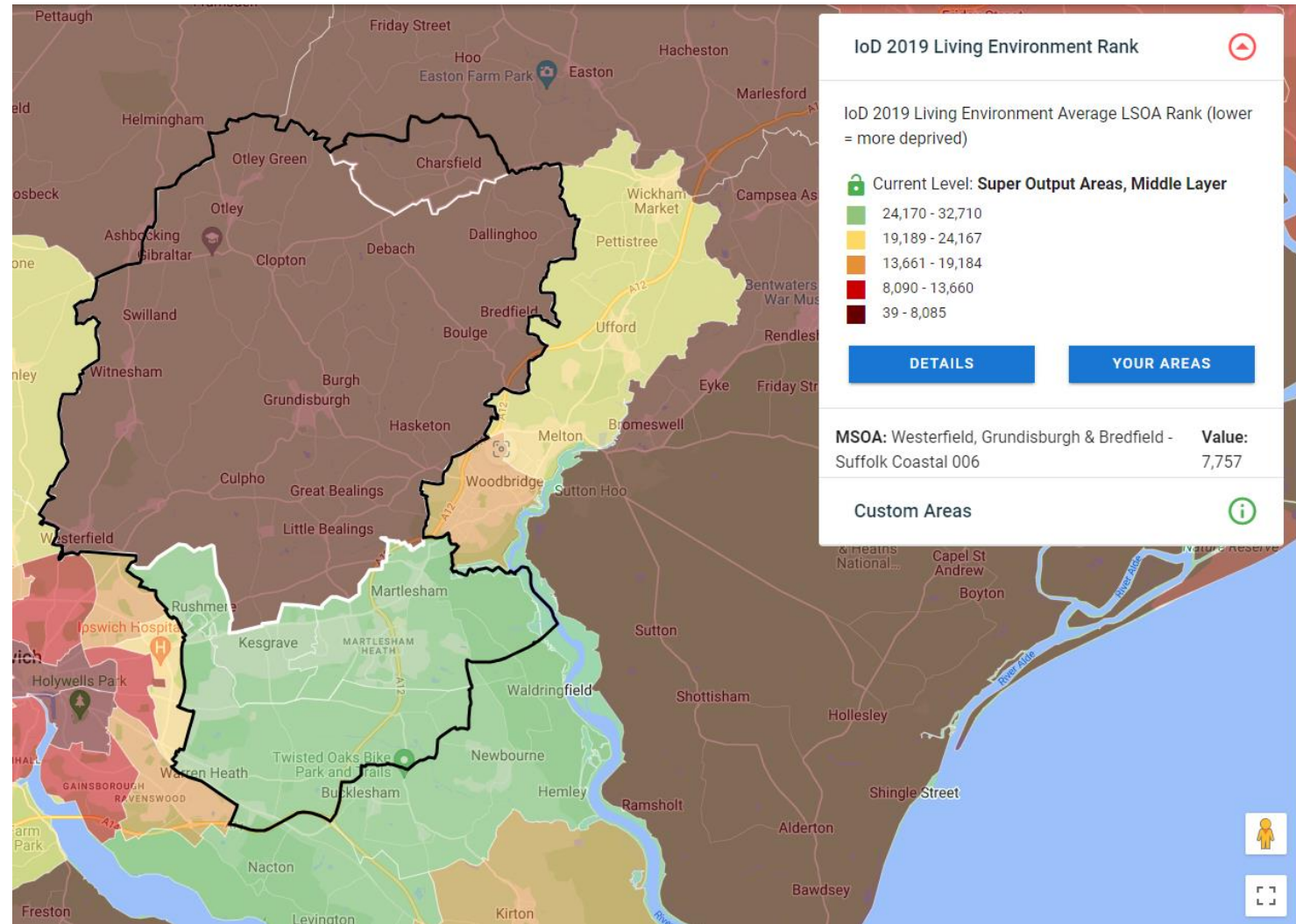


# Very low levels of Anti-Social Behaviour reported

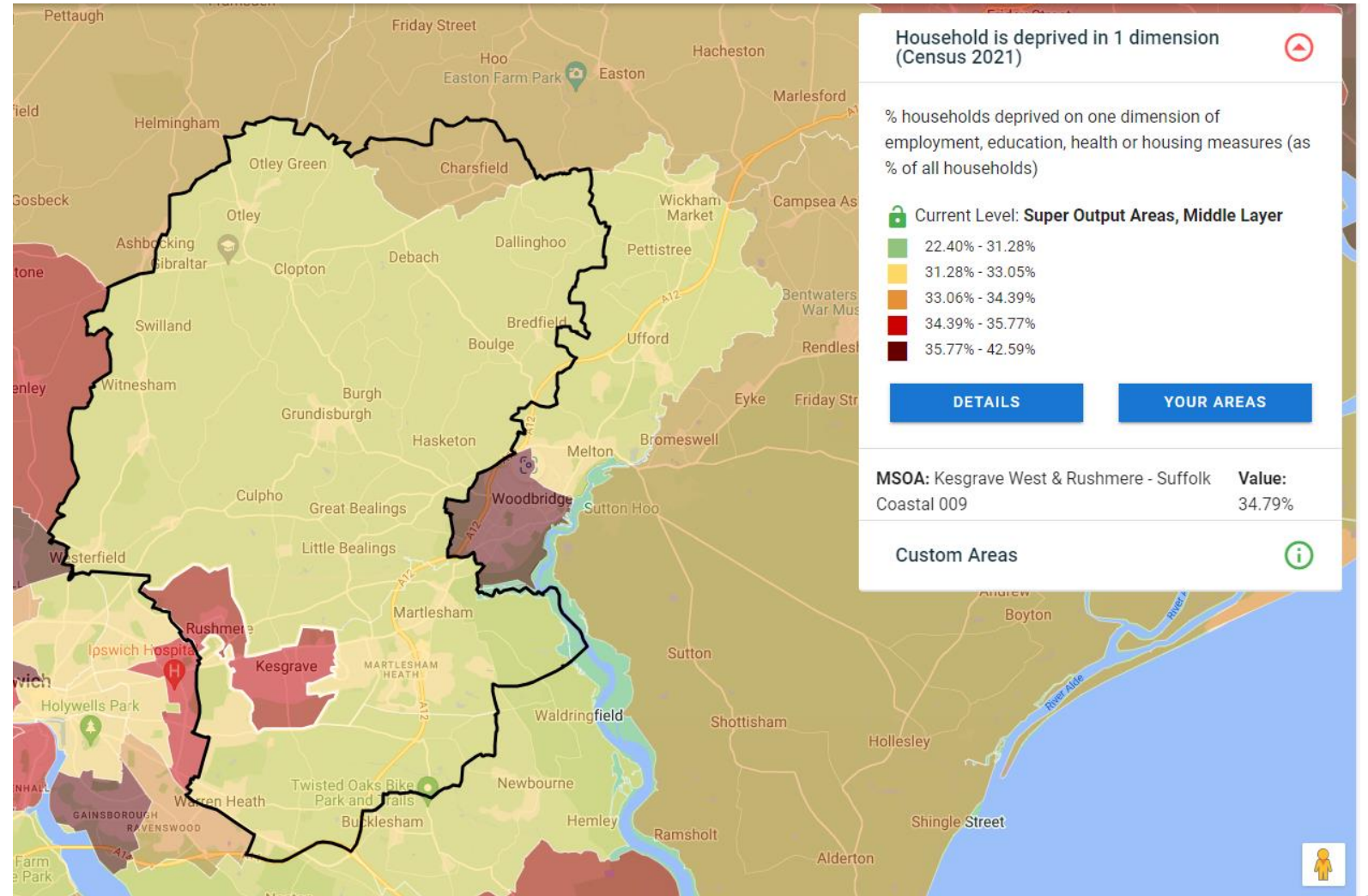




Living environment issues – central heating, condition of property, etc.



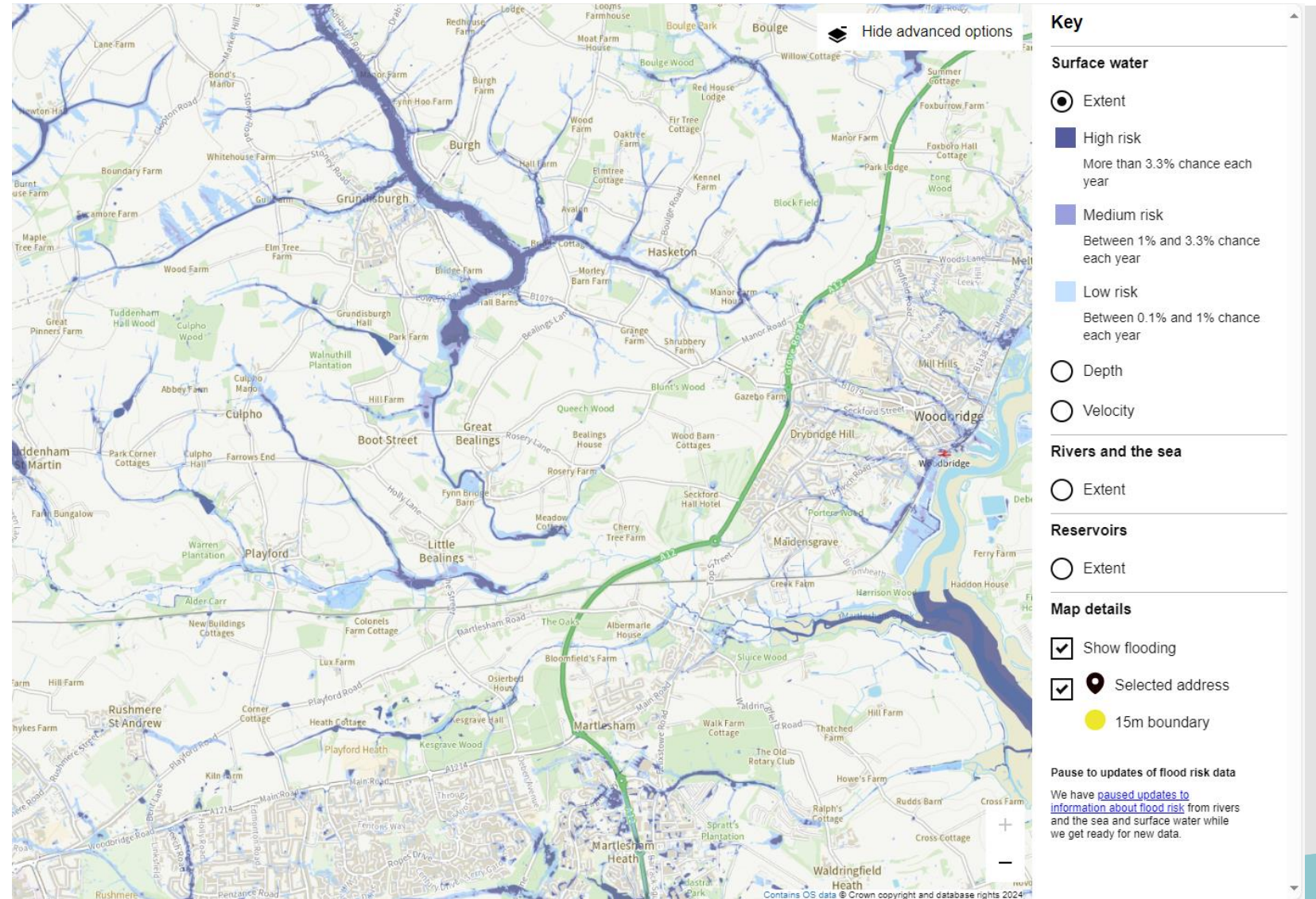
Some form of deprivation greatest in West Kesgrave and Rushmere village



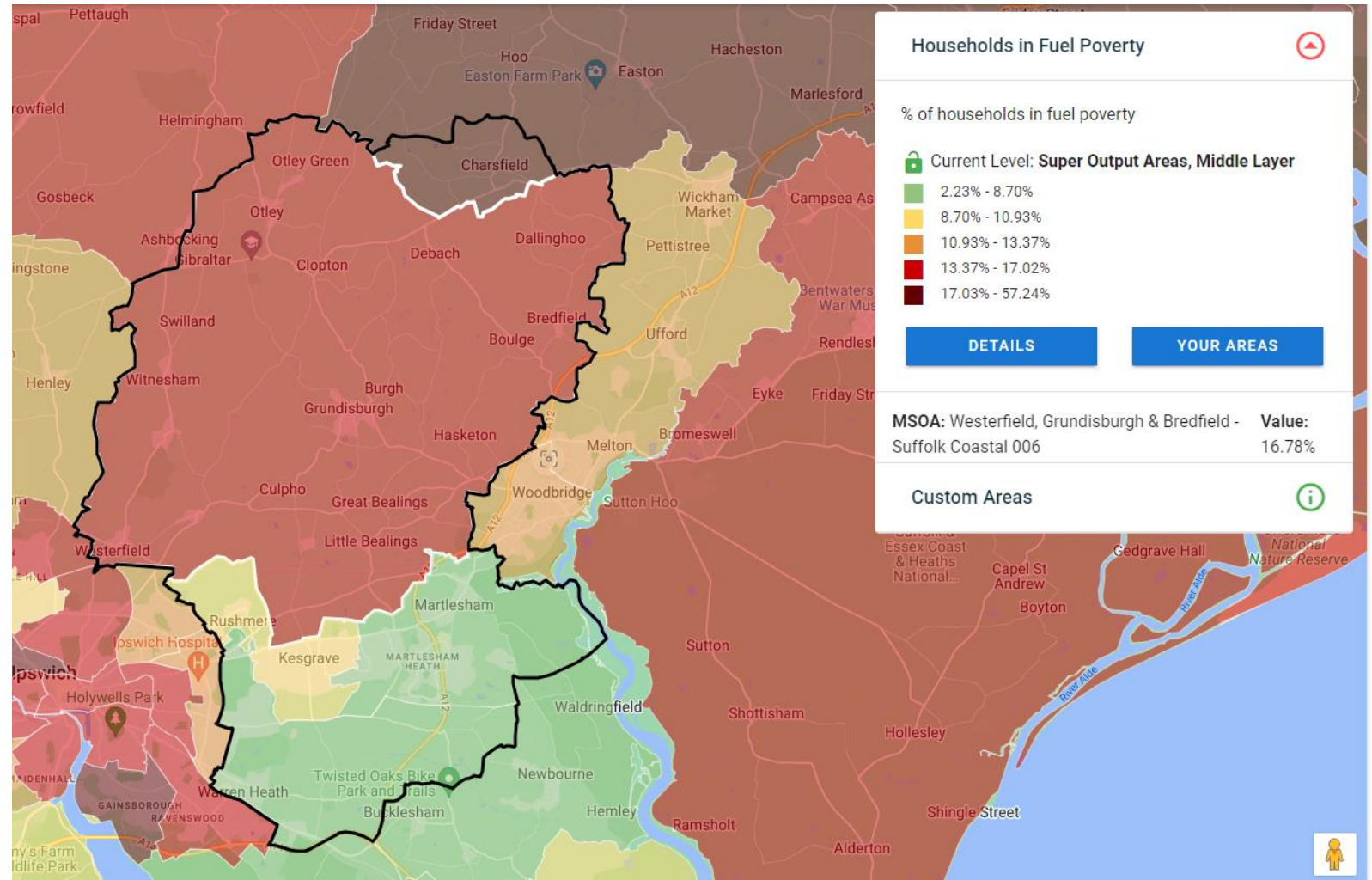


# Flood vulnerability -

[Click here for full map](#)

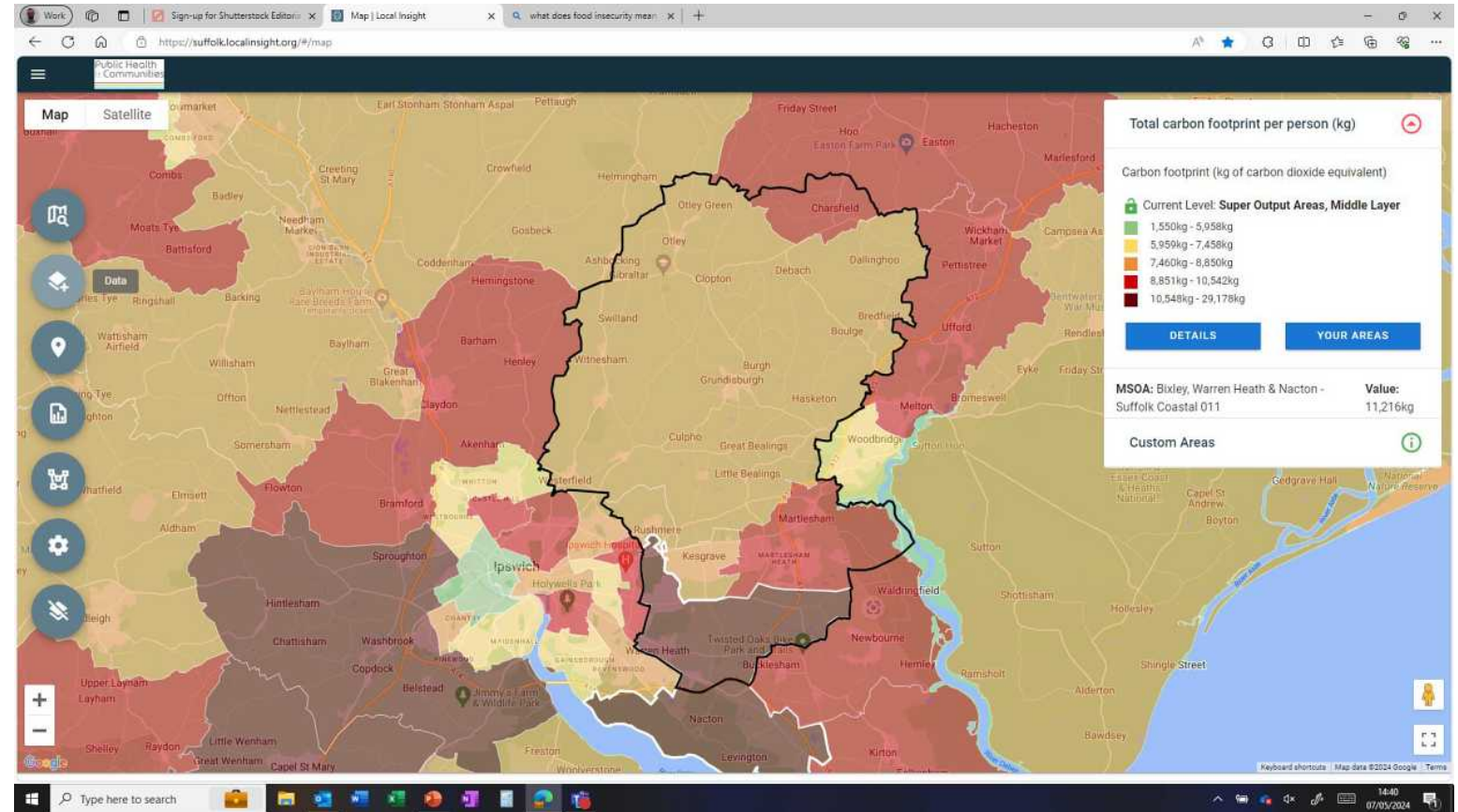


Fuel poverty  
greatest in  
rural areas

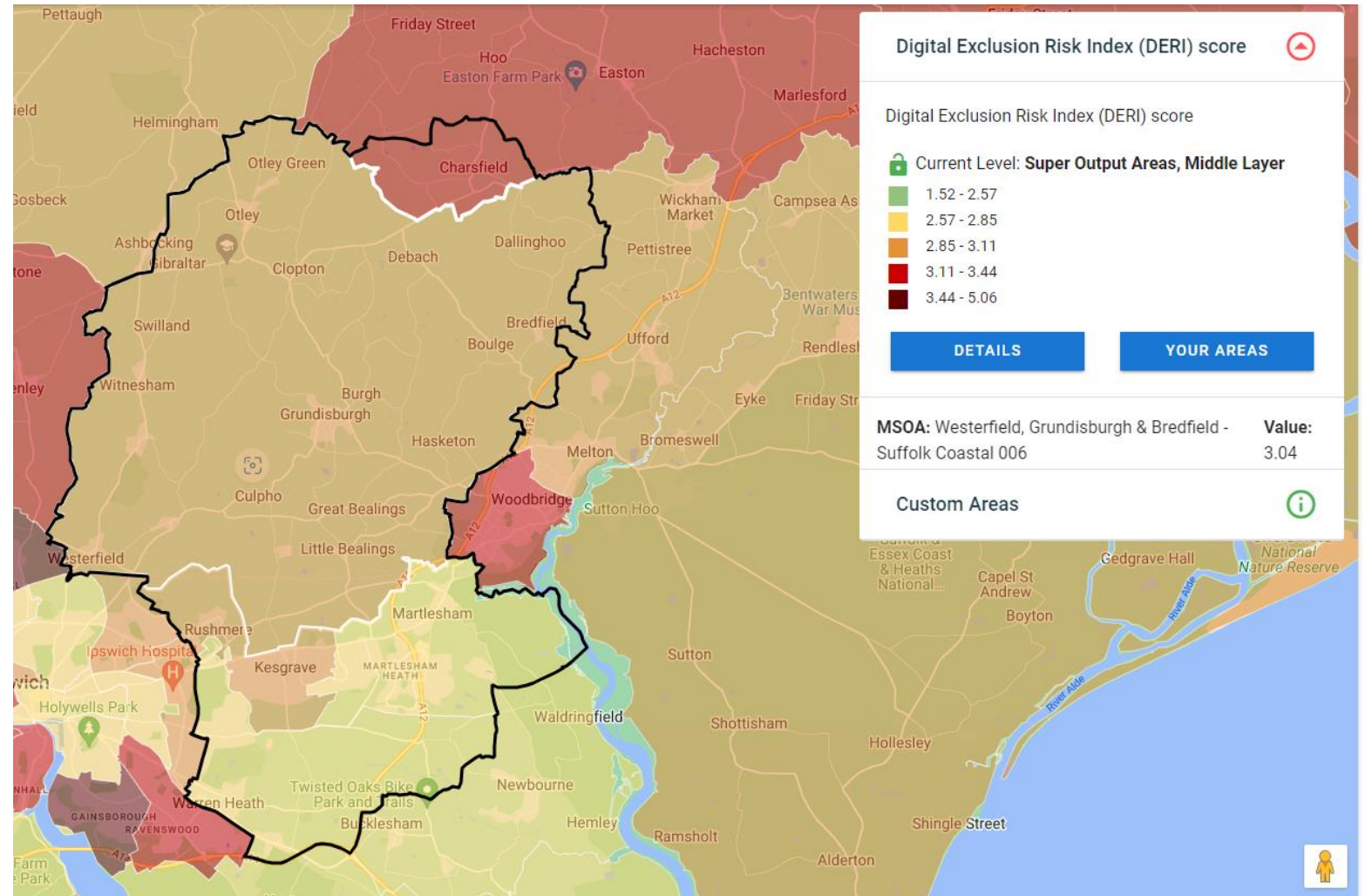




Carbon footprint greatest in more urban areas



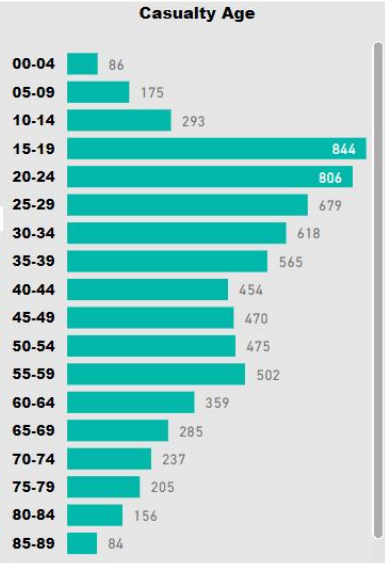
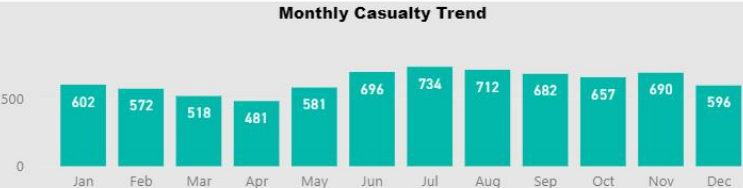
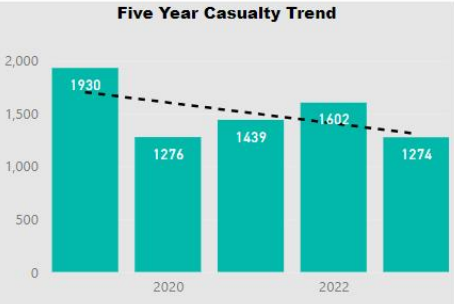
Digital exclusion – Grundisburgh Tech Hub recently launched.



Road Safety data can be viewed [here](#).

# Junction Analysis all casualties

Full year  5 years



Year	Fatal	Serious	Slight	Total
2019	25	358	1547	1930
2020	10	261	1005	1276
2021	20	280	1139	1439
2022	22	294	1286	1602
2023	24	287	963	1274
<b>Total</b>	<b>101</b>	<b>1480</b>	<b>5940</b>	<b>7521</b>

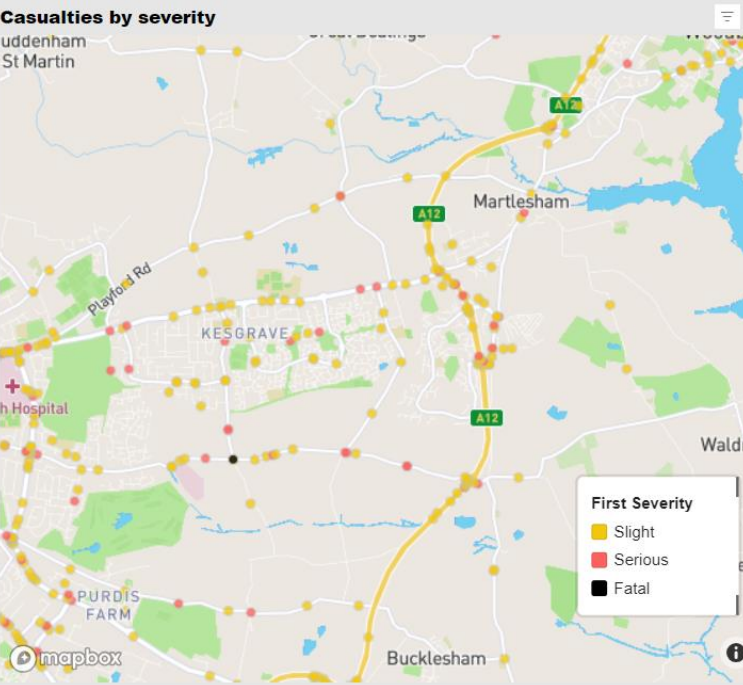
#### Road Cond. No.

1. Dry	5169
2. Wet/Damp	2098
3. Snow	22
4. Frost/Ice	122
5. Flood	13
<b>Total</b>	<b>7424</b>

#### Speed Limit No.

70	647
60	2033
50	281
40	588
30	3873
20	97
10	1
<b>Total</b>	<b>7521</b>



Vehicle group	No.	Day	No.
Bus or Coach	37	1. Sunday	842
Car	4822	2. Monday	1059
HGV	44	3. Tuesday	1125
LGV	212	4. Wednesday	1115
Motocyclist	722	5. Thursday	1103
Other Vehicle	178	6. Friday	1263
Pedal Cyclist	780	<b>Total</b>	<b>7521</b>
Pedestrian	723		
<b>Total</b>	<b>7518</b>		



This is STATS19 Data, it's collected by the police and the recording of it governed nationally by the Department of Transport.

(Blank)  
 Female  
 Male