

UK SHARED PROSPERITY FUND

UP TO
31 MARCH 2024

OVERVIEW

The primary goal of the UKSPF is to build pride in place and increase life chances across the UK.

East Suffolk Council was allocated £2.75m to invest across two and a half years (2022/23 - 24/25). The funding was unlocked upon submission of an Investment Plan which was signed off by both the council and the government.

The fund is based around three investment priorities which are focused in a specific year but can cross over in some circumstances:

Communities and Place 2022-23
Supporting Local Business 2023-24
People and Skills 2024-25

The funding can be spent on capital (physical assets) and revenue (operational) projects. The funding amounts for each of the three years differ and can be found in appendix 1.

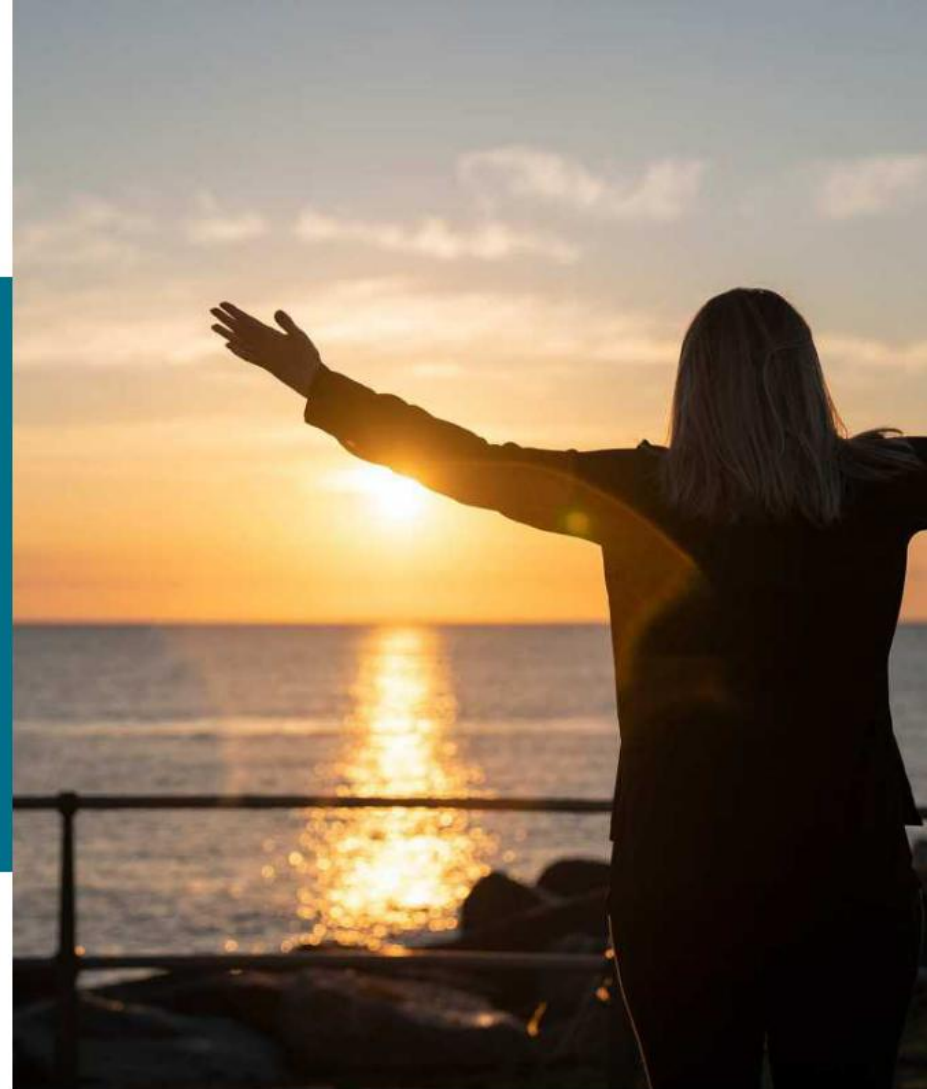
INVESTMENT PLAN

ESC Investment Plan contains eight key programmes, based on new and existing schemes to be delivered either locally or collaboratively with other local authorities in Suffolk.

To develop the East Suffolk Investment Plan, the council gathered stakeholder input through a public survey to invite local stakeholders to give their views on what are the most pressing local challenges that need to be addressed, and the projects and initiatives that could best address them. This input was combined with data about the local area and existing funding, the Government criteria and wider strategic priorities to inform the development of the East Suffolk investment plan.

COUNTY COLLABORATION

Suffolk Local Authorities have recognised the benefits and the economies of scale that can be achieved through a collaborative business support and skills programme.



OUTCOMES

The Investment Plan aims to achieve a range of outcomes such as:

- Rehabilitated premises and land in our high streets
- Support community members through the cost-of-living crisis
- Support businesses to start-up and grow
- Modernise and upgrade training centres and hubs
- Support decarbonisation whilst growing the local economy
- Provide direct support to those that are economically inactive
- Support people to engage with life skills or gain a vocational license through providing financial support

COMMUNITIES AND PLACE

Strengthening our social fabric and fostering a sense of local pride and belonging.

Total budget: £643,745

EAST SUFFOLK HIGH STREET IMPROVEMENT GRANTS

Aims of the grant:

- Improve the attractiveness of our town centres
- Increase footfall, spend and dwell
- Support the growth of local businesses and our town centres
- More details available in appendix 1

Project budget: £267,749

Delivery in 2022-2024 (£165,719 which includes match funding from ED budget):

- 16 grants awarded across 7 East Suffolk Towns
- Project themes include: free Wi-Fi extensions, wayfinding signage, food & drink trails, town promotional assets, planters, disabled access improvements, market regeneration scheme

Delivery in 2024/25 (£100,000):

- Shop fronts grants scheme launched April 2024
- Businesses, landlords and tenants of high street businesses are eligible
- Grants of between £2,000 - £5,000
- Intervention rate is 50%
- 69 applications currently being appraised

EAST SUFFOLK EVENTS, ARTS AND CULTURE GRANT

Aims of the grant:

- Provide access to cultural participation
- Grow the development of a year-round visitor economy
- To create visually stimulating and attractive town centres that capitalise on their individual character
- Improve town centre footfall

Project Budget: £118,000

Delivery 2022-2024:

- 16 grants awarded
- 7 East Suffolk towns supported
- 82 events delivered in total



See next page for projects under this theme which are delivered by the Communities team:

- Community Pantries
- Field to Fork
- Warm Rooms
- Cooking on a Budget



COMMUNITIES (CONT'D)

Strengthening our social fabric and fostering a sense of local pride and belonging.

Total budget: £643,745

COMMUNITY PANTRIES FIELD TO FORK WARM ROOMS COOKING ON A BUDGET

Aims of the grant:

- To encourage projects that strengthen our social fabric and foster a sense of local pride
- **Community Pantries** - to provide somewhere welcoming, similar to a shop setting, where people can pay a weekly subscription of less than £5.00 and receive food worth at least £15 in value.
- It is a model that promotes dignity, self-reliance, and community.
- Is is a sustainable way of people accessing affordable food.
- **Field to Fork** - to increase the number of local residents engaging with local allotments, community gardens, green spaces or equivalents, that offer the ability to grow produce.
- **Warm Rooms** - a network of venues offering residents a warm, safe space to socialise over the winter.
- **Cooking on a Budget** - to deliver cooking on a budget classes.

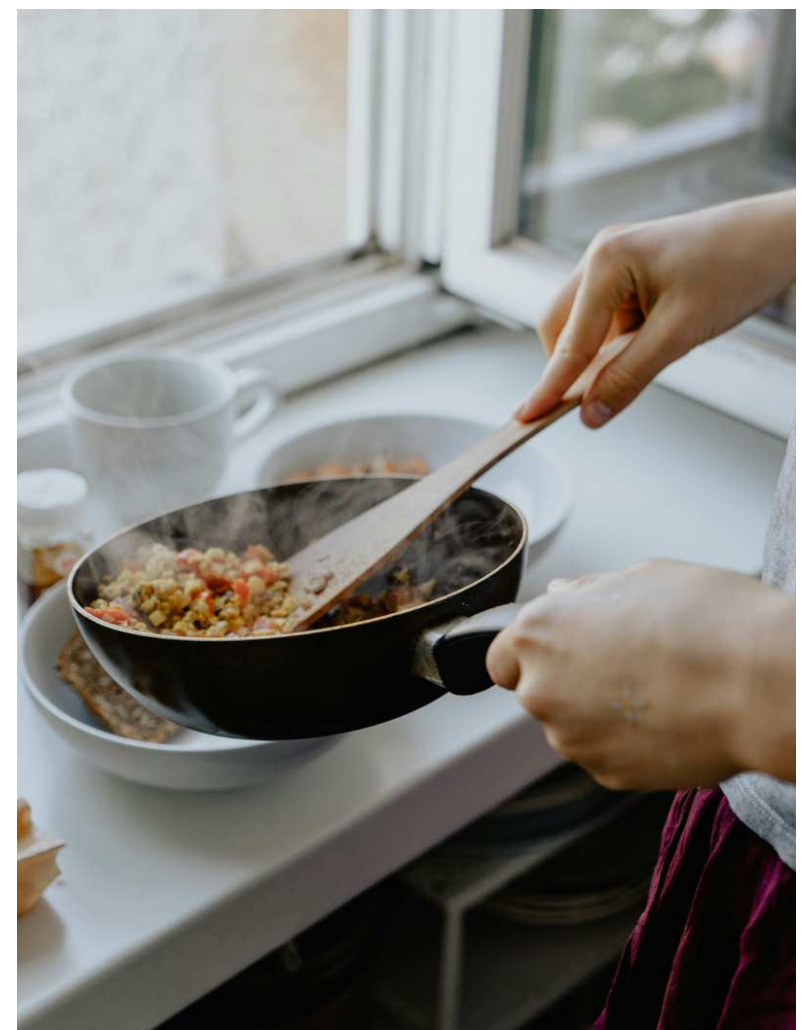
Project budget: £258,100

Delivery in 2022-2024 (£145,900):

- Across the Cost-of-Living programme the project initiatives have supported 3,695 households, 12,242 individuals, and 38 organisations in years 1 and 2

Delivery in 2024/25:

- **Community Pantries** - grants up to £6,000
- Organisations get membership of the Food Network Scheme, with targeted support from the Food Network Co-ordinator
- **Field to Fork** - grants up to £2,000
- **Warm Rooms** - 12 organisations funded in 23/24
- Project will open in Autumn for 24/25



SUPPORTING LOCAL BUSINESS

Supporting local businesses to thrive, innovate
and grow through locally led initiatives

Total budget: £1,327,199

ENERGY EFFICIENCY GRANTS

Project budget: £138,696

- Includes Groundwork East consultancy
- 9 businesses have received grants to date (50% intervention)
- 42 energy audits completed to date
- 37 decarbonisation plans completed to date

SUFFOLK BUSINESS GRANTS

Project budget: £143,507

- 2023/24 Budget allocated £67,270
- 14 businesses received grants
- Examples of grant investments; web and connectivity, capital equipment purchases to give energy efficiency and expand markets, and consultancy services
- 2024/25 scheme now open

SUFFOLK WIDE BUSINESS SUPPORT (TOTAL VALUE £663,613)

Project budget: £188,609

- 18-month contract until 31/03/2025
- YTKO is providing delivery for Suffolk via the Growth Hub and scale up programme
- General business support provided
- Sign posting to specialist business advice
- Grant finding advice and guidance
- Workshops provided
- 83 businesses in East Suffolk have received support to-date

START-UP PROGRAMME

Project budget: £268,125

- Delivered by MENTA & NWES
- Providing business support and training
- 254 enrolments for 2023
- 107 workshops delivered
- 197 individuals attended workshops



PROGRAMME OVERVIEW

Aim of the programme:

- Provide support for business growth and entrepreneurship
- Provide support for a steady move to net zero using more energy efficient and greener technologies

Delivery method:

- Collaborative working with SCC and district/borough
- Financial support (grants)
- Specialist expertise (Groundworks East, YTKO, MENTA and NWES)
- Wraparound support

PEOPLE AND SKILLS

Reducing barriers to employment and support to move people towards employment or education

Total budget: £781,808

PERSONAL DEVELOPMENT SERVICE

Total budget: £95,625

- Contract awarded to Inspire Suffolk
- Provided 1-2-1 support for young people who are furthest away from employment, education, and training
- Aim is to build skills, support goals of being employed, participating in education or training closer
- Support to access wider service e.g., mental health, DWP etc
- Intense support provided
- 21 participated in the scheme to-date

YOUTH EMPLOYMENT SERVICE

Total budget: £140,000

- Contract awarded to Inspire Suffolk
- Target group 16–24-year-olds
- Job coaching from dedicated staff
- Skills workshops provision
- Link with education and training
- Employer interactions
- Health and Wellbeing support

BUSINESS SUPPORT FOR RECRUITMENT, TRAINING AND CAREER PATHWAYS

Total budget: £115,107

- Contract awarded to Menta
- Project to be launched early May 2025
- Direct support to business provided
- Support for recruitment training and career pathways

Supported



PROGRAMME OVERVIEW

Aim of the programme:

Support people who are furthest from employment, education and training.

- Locally led skills interventions
- Support Young people at risk or are NEET
- Support adults with basic skills to be able to remain and progress in employment
- Support young people to access self-employment and business enterprise opportunities

Delivery method:

- Collaborative working with SCC and district/borough
- Contract awards to specialist providers.
- Grant award
- Capital grant programme

PEOPLE AND SKILLS (CONT'D)

Reducing barriers to employment and support to move people towards employment or education

Total budget: £781,808

CAPITAL INVESTMENT FOR SKILLS

Total budget: £470,358

- Grant programme for capital investment projects that support skills delivery
- FE, business and community training facilities eligible
- Tier 1: Grants between £5,000 and £24,999
- Tier 2: Grants between £25,000 and £100,000
- Scheme went live in April 2024

SUFFOLK WIDE SKILLS EMPLOYMENT, INCLUDING APPRENTICESHIPS (TOTAL VALUE £1,030,000)

Total budget: £396,000

- Contract is managed by Suffolk County Council for a county wide collaboration between the districts/borough
- Split into Youth and Adult services
- Both contracts will be delivered by Suffolk New College in collaboration specialist partners
- The contracts will work with both economically active and inactive members of the community
- Project to be launched early May 2024

YOUTH ENTERPRISE PROJECT

Total contract budget (combined): £40,000

- Aim is to enhance enterprise opportunities for young people
- 2 contracts awarded to East Coast College and Suffolk New College for delivery
- Funding to enhance existing programmes in the colleges
- Focus on assisting students to become self-employed or start a business



PROGRAMME OVERVIEW

Aim of the programme:

Support people who are furthest from employment, education and training.

- Locally led skills interventions
- Support Young people at risk or are NEET
- Support adults with basic skills to be able to remain and progress in employment
- Support young people to access self-employment and business enterprise opportunities

Delivery method:

- Collaborative working with SCC and district/borough
- Contract awards to specialist providers.
- Grant award
- Capital grant programme

RURAL ENGLAND PROSPERITY FUND (REPF) PROGRAMME

OVERVIEW

Total budget: £1.129m - 2023/24 and 2024/25

The Rural England Prosperity Fund will provide capital grants to small businesses and community infrastructure in the district's rural area.

- Rural Business Investment Fund
- Rural Business and Community Hub Fund

RURAL BUSINESS INVESTMENT FUND

Total budget: £709,881

- Providing grants throughout 2023/24 and 2024/25 to rural businesses for between £15,000 - £30,000 per application
- 2023/24 Budget £192,470.25
- To date there have been 2 application rounds
- Grants have been awarded totalling £181,582.88 spent
- 8 businesses have adopted new to firm technology, with 122 jobs safeguarded
- 8 businesses are expecting a growth rate average of 35%

RURAL BUSINESS AND COMMUNITY HUB FUND

Total budget: £420,000

- This fund is being delivered by the Communities team
- Providing grants throughout 2023/24 and 2024/25 to rural organisations for between £15,000 - £30,000 per application to develop multi-functional community hubs
- 2023/24 - 5 grants awarded with £120,000 spent



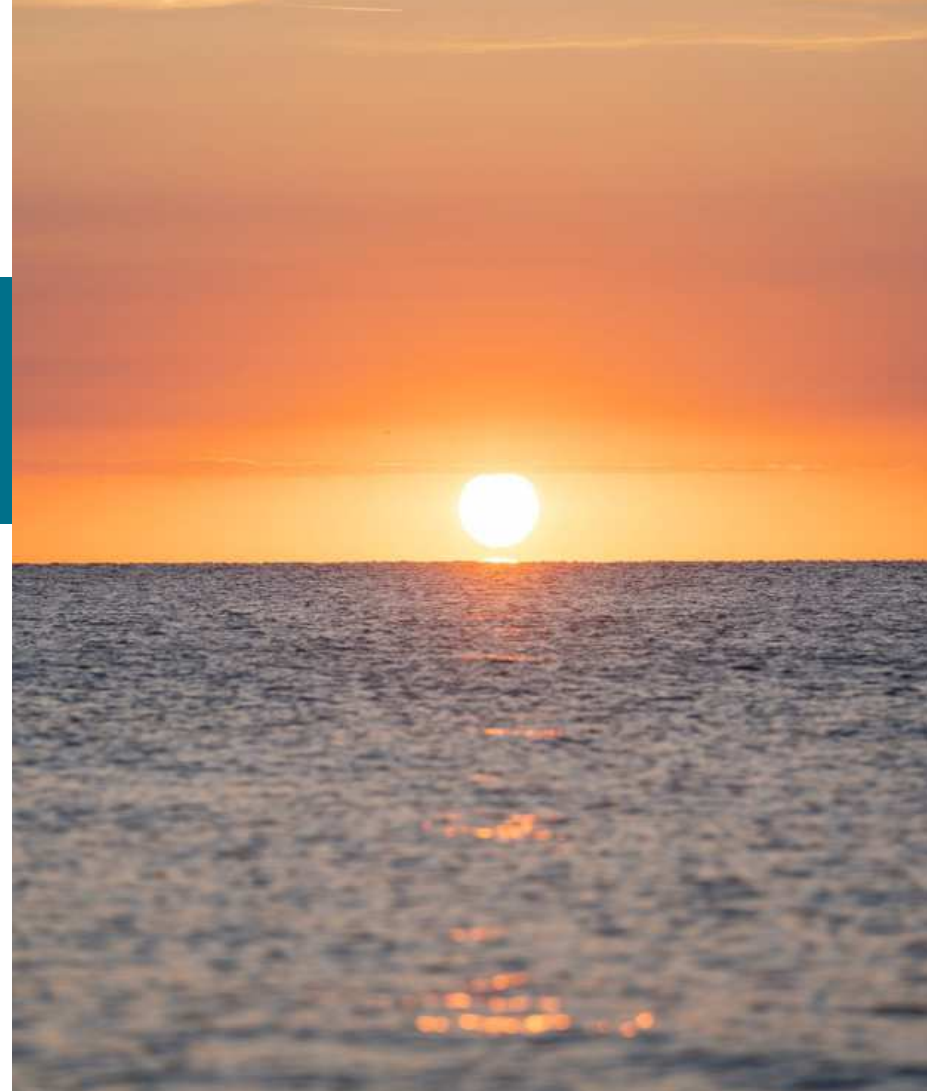
MONITORING AND EVALUATION

For both UKSPF and REPF, ESC must report back to government on allocations spend, agreed timescales and milestones, including achievement of outputs and outcomes at the project level.

Full evaluation and monitoring reports will be written for each project once they are completed.



APPENDIX 1



Funding profile				
Funding sources	2022-23	2023-24	2024-25	Total
UKSPF allocation	£334,072	£668,144	£1,750,536	£2,752,752
Revenue split	£300,664	£581,285	£1,400,428	£2,282,378
Capital split	£33,407	£86,858	£350,107	£470,373

The capital split is 10% in 2022-23, 13% in 2023-24, and 20% in 2024-25 as dictated by DLUHC.