



Felixstowe youth community café

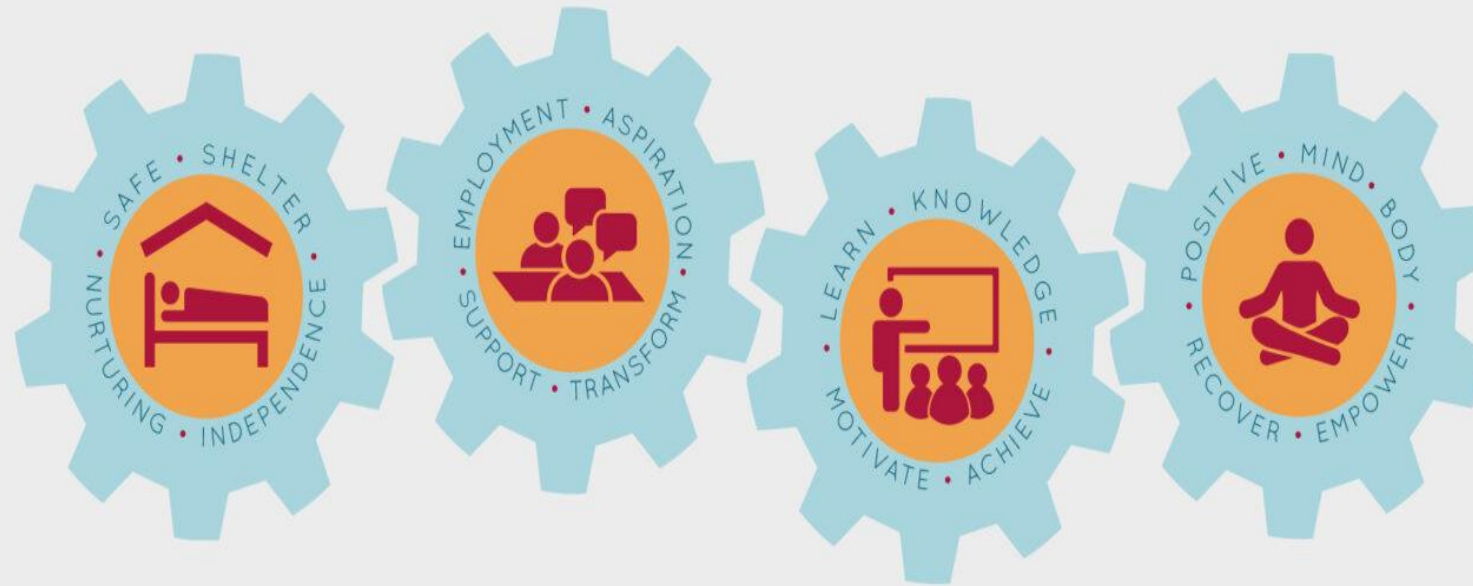


Background

Who is **Access Community Trust**?

Our vision is to promote social inclusion for the community benefit by preventing people from becoming socially excluded, relieving the needs of those who are socially excluded and assisting them to integrate into society.





avenue mansions
 beaconsfield house
 bostock house
 bridge view
 denmark house
 the foyer
 fyffe centre
 haven court
 john room house
 phoenix house



Felixstowe



Current provisions

- ☐ Supported accommodation for young people (16 -21year olds)
- ☐ Connect for Health - Social prescribing
- ☐ Community circles
- ☐ Skills Connect
- ☐ Pink Orange

Youth Community Café - Felixstowe

Long term vision

- Create a multi agency hub aimed at older young people (16-25years old)
- Opportunities to continually develop the offer for the community through ACT, SA and other key partners

Medium term vision

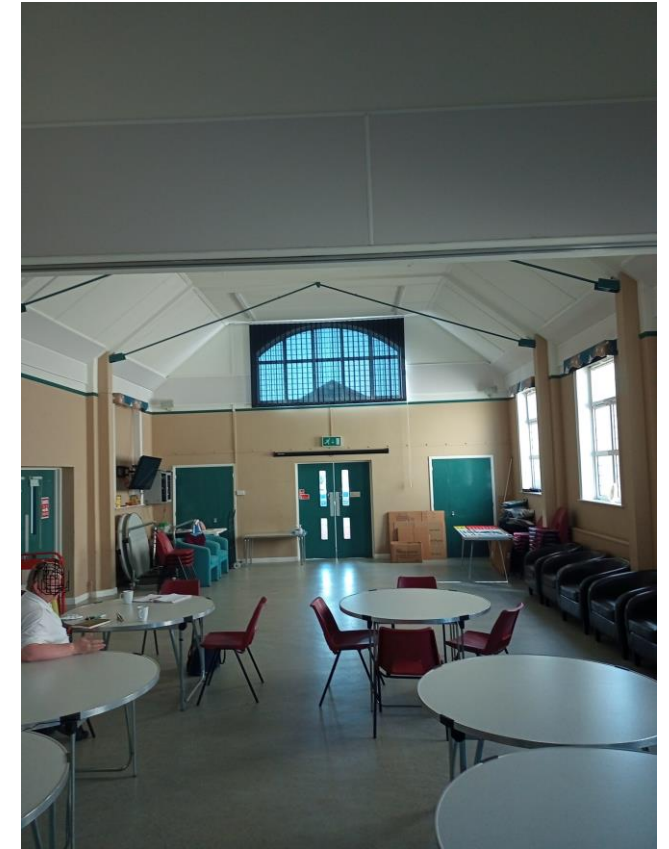
- Develop a committee of young people
- Develop a range of groups and activities to meet needs

Short term vision

- Key work sessions
- Morning session employability and confidence building
- Membership
- Café run by Access and Young people

Next Steps

- Plan to soft launch on the 3rd May for 1 day per week (Tuesdays)
- Café will be run by ACT youth workers and volunteers of young people
- Supported by Youth supported housing manager
- Overseen by Dionne Walton (Head of YPS)



Café pilot seed funding – 26 weeks based on one day per week 10 – 6pm

Staffing 1 person cafe	Venue	Session delivery 2 session per day 1 person Access CT project staff	Café consumables Subsidised for young people.
Access to fund	Donated by Salvation Army	£1,248	£1,950
Total	£3,198		