



East Suffolk
Community
Partnerships

Bringing ideas to life

East Suffolk Community Partnerships and Community Partnership Board – the journey so far

Community Partnership Board

27TH JUNE 2023

Community Partnership Ambitions



East Suffolk
Community
Partnerships
Bringing ideas to life



The place to do place-based partnership work



Programmes/projects to address priorities identified at both East Suffolk and individual CP level



Solution-focussed - collaboratively problem solve key challenges for East Suffolk



Be able to evidence the impact of our funding (Community Partnerships and Board)



Annual Forum to share good practice and lessons learned

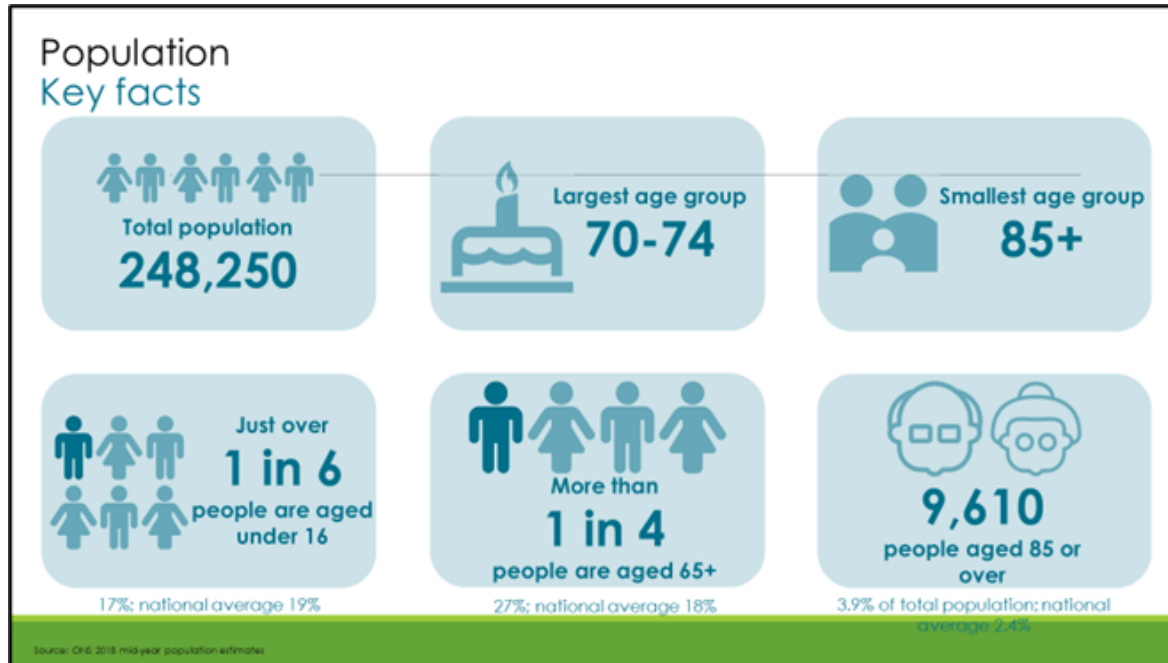
Focus on:



East Suffolk
Community
Partnerships

Bringing ideas to life

What we know (data)



What local people know (insight)

Community Partnership Board



- Focus on issues identified as a priority for multiple Community Partnerships and through data/insight
- Membership: 8 CP Chairs, ESC and SCC councillors, SALC, Community Action Suffolk, Suffolk Community Foundation, Greenprint Forum, business representatives, 2 Integrated Care Bodies, Police and more....

Community Partnership Board Priorities



East Suffolk
Community
Partnerships

Bringing ideas to life



Social Isolation and Loneliness



Transport and Travel



Mental Health & Wellbeing – particular focus on young people



Covid Recovery in East Suffolk



Inequalities - focus on Financial Inequality/Cost of Living



19 programmes/projects funded...so far

Community Partnership Board spend to end March 2023

[Budget: £300k per annum]

Social Isolation and Loneliness

- Hidden Needs Grants - £40,000 + £50,000
- Grandpads - £36,500
- Everyone Active, Supported Together (EAST) Bags - £20,000
- 21st Century Community Hubs - £68,000

Transport and Travel

- Community Transport Programme - £80,000 + £100,000
- Katch 1 – £40,000 / Katch 2 - £90,000
- DRT Mobile App - £14,500

Mental Health and Wellbeing

- Well Minds East Suffolk (Mental Health) - £122,400
- Student Life – Mental Health Peer Ambassadors - £15,750
- SPOT Wellbeing - £12,600
- Access Community Trust Hoarding - £22,500

Covid Recovery

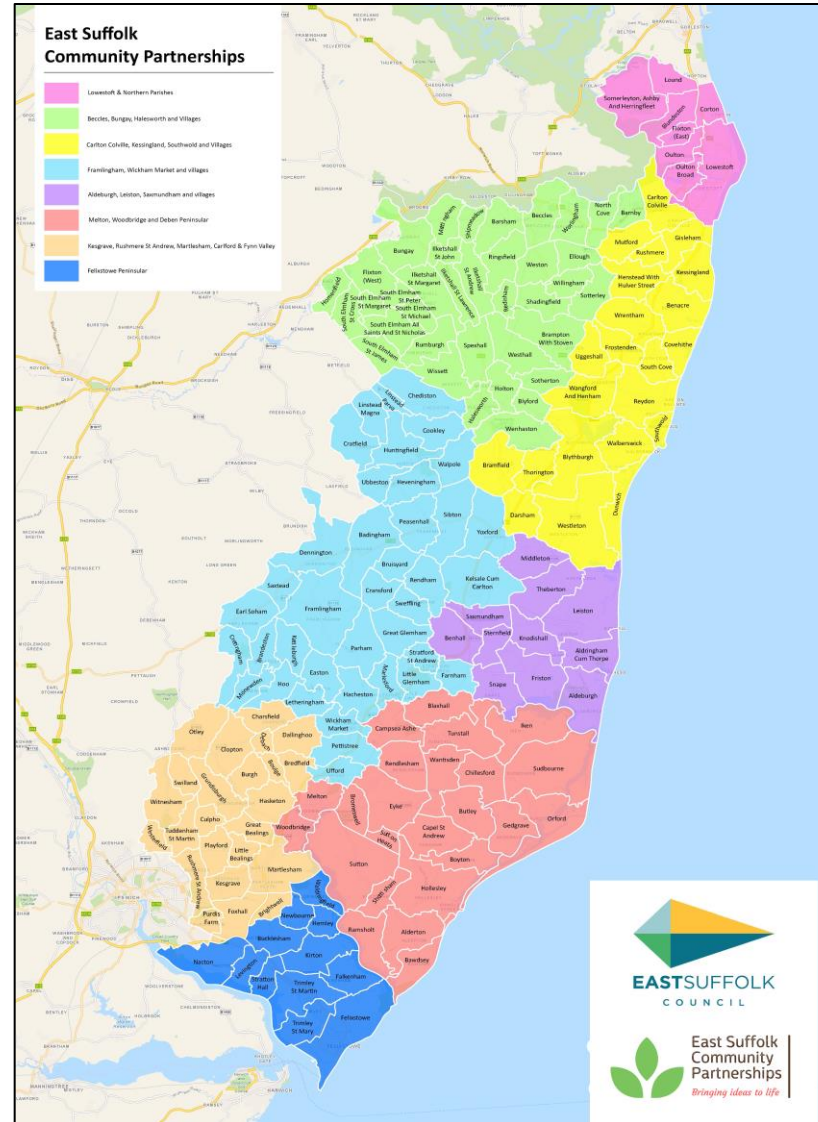
- Covid-19 Community Fund - £20,000
- Bounce Back VCSE grants - £100,000
- CAS – Buddy Up - £10,368

Tackling Inequalities

- Ease the Squeeze Cost of Living programme - £100,000
- CAS Volunteer Pathways project - £30,827
- MENTA – Ambitions to Employ - £35,000
- East Coast College – Energise - £18,000



Community Partnerships



- 8 partnerships, based on East Suffolk wards
- £25k budget each per annum
- 196 projects funded so far
- Communities Officer aligned to each Community Partnership area
- Wide membership: ESC councillors, Town, Parish and County Councillors, voluntary organisations, community groups, young people, Health, Police and more....

Community Partnership Priorities (at June 2023)

Aldeburgh, Leiston, Saxmundham and villages

- Reduce social isolation and loneliness, particularly for carers, older people, and men over 40
- Encourage and enable everyone to more physically active and healthy
- Education, opportunities, and aspirations

Chair: Cllr John Fisher

Beccles, Bungay, Halesworth and villages

- Tackle social Isolation and loneliness of our residents, whatever their age
- Enabling people to live healthier, active and sustainable lifestyles

Chair: Cllr Beth Keys-Holloway

Carlton Colville, Kessingland, Southwold and villages

- Reduce social isolation and loneliness
- Facilities, activities and employment for children and young people
- Cost of Living Support

Chair: Cllr Alan Green

Felixstowe Peninsular

- Supporting the community through the rising cost of living and fuel crisis
- Improving the physical health and wellbeing of primary school children
- Increase physical and social activity in adults

Chair: Cllr Rosie Smithson

Community Partnership Priorities (at June 2023)

Framlingham, Wickham Market and villages

- Transport (especially health appointments and isolated communities)
- Mental Health (all ages) – links to a lack of physical activities available
- Intergenerational skills exchange (Men's Shed, sports, allotments & arts)
- Support for Volunteers (Cross-Cutting)

Chair: Cllr Sally Noble

Kesgrave, Rushmere St Andrew, Martlesham, Carlford and Fynn Valley

- Environmental Care
- Road and Traffic Safety
- Covid Recovery – addressing issues exacerbated by the pandemic

Chair: Cllr Ed Thompson

Lowestoft and Northern Parishes

- Improve mental health and wellbeing
- Increase healthy eating in children by targeting and engaging with preschools/nursery staff, children and parents via education and communication
- Reduce social isolation and loneliness

Chair: Cllr Paul Ashdown

Melton, Woodbridge and Deben Peninsular

- Increase Community Cohesion and participation by maximising the use of existing community spaces
- Increase access to activities or options that support physical and mental health well-being for young people

Chair: Cllr Stephen Molyneux

Budgets: Match Funding and Leverage 2022/23



East Suffolk
Community
Partnerships
Bringing ideas to life

Community Partnership Board

Total match-funding = £1,369,901

Each £ of CP Board funding
attracted **£4.77** match

Community Partnerships (combined)

Total match-funding = £590,483.68

Each £ of CP funding
attracted **£3.61** match



Home Pack- whole family approach



Free slipper swap

Are your slippers looking worse for wear?
Then swap them for some new ones – for free!

Comfortable, warm slippers prevent falls and injuries - just provide your old ones and we'll exchange them for a brand new pair.

Available for older people living in **Beccles, Bungay, Halesworth & surrounding villages***

To register your interest or for further information please contact:
communities@eastsoffolk.gov.uk
or call on **01502 523 119**

