

Item: 7

DC/20/4916/FUL

Change of use and conversion of an existing agricultural building to B8 (storage) use, including the installation of cladding over three bays on the south east elevation.

Alston Barns, Grimston Lane, Trimley St Martin, Suffolk,
IP11 0SD



Site context



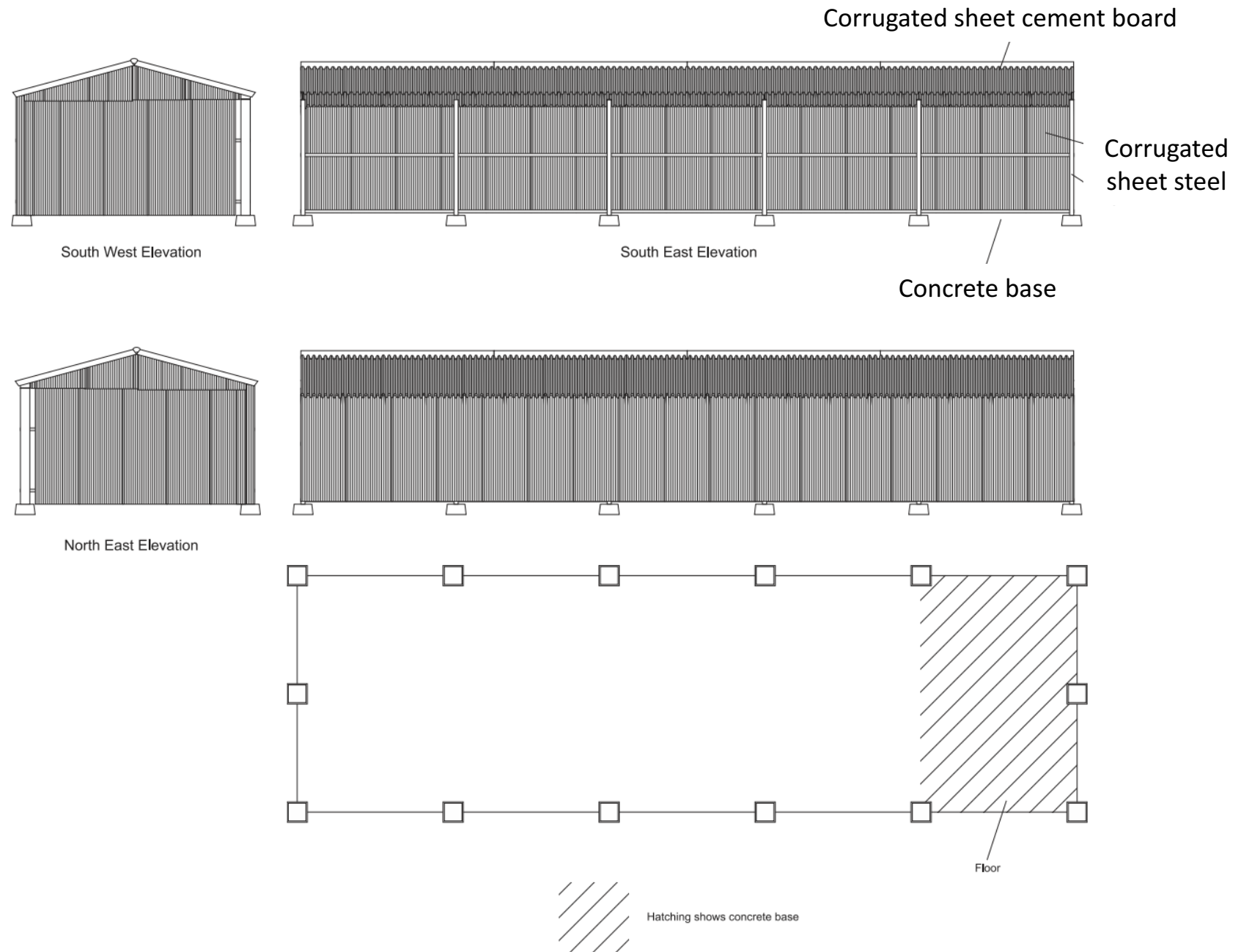
Site context



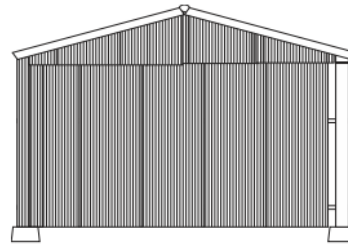
Site location plan



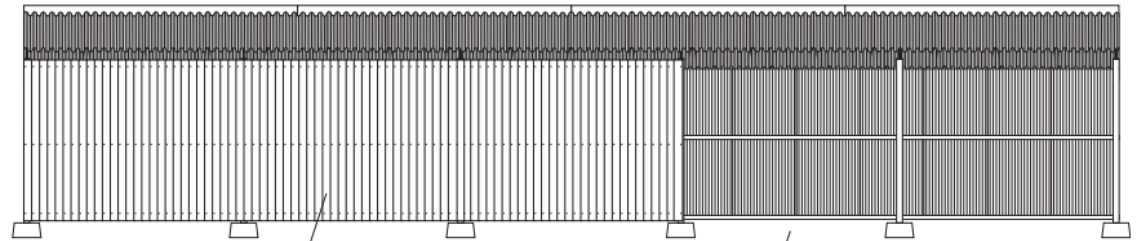
Existing elevations and floorplan



Proposed elevations



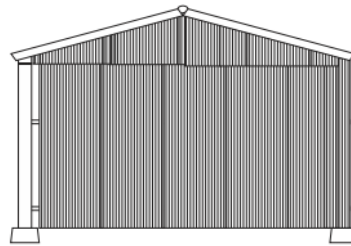
South West Elevation



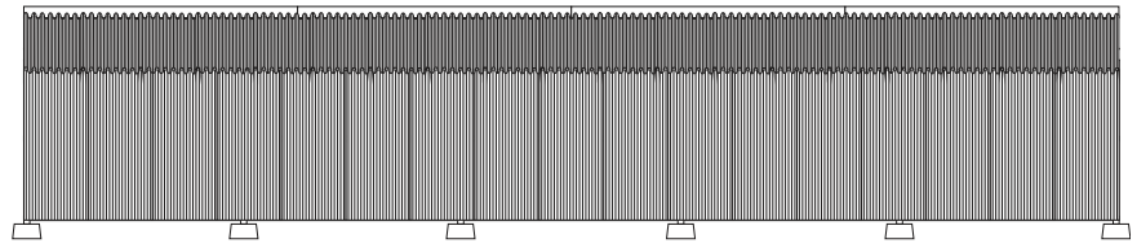
South East Elevation

Vertical feather board
cladding - black

Concrete base

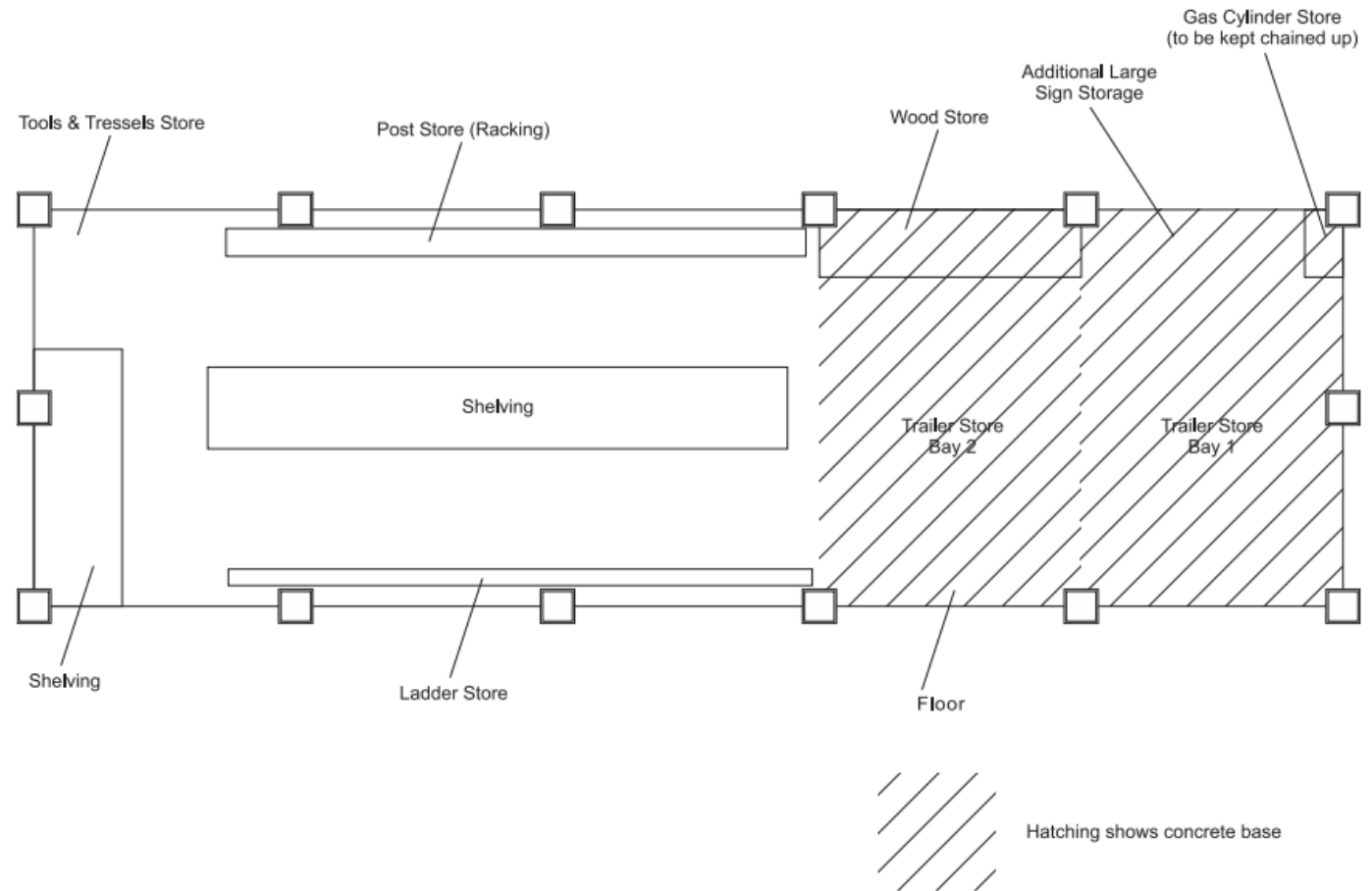


North East Elevation



North West Elevation

Proposed floorplan



Site photos



Site photos



Site photos



Material planning considerations

- Business use in the countryside
- Impact on residential amenity
- Landscape impacts (within AONB)
- Ecological impacts
- Design aesthetics/visual amenity
- Highway impacts relating to traffic/parking provision

Recommendation

Recommended for approval subject to conditions as outlined within the report – summarised below:

- Time
- Plans
- Materials
- Ecological mitigation
- Ecology – breeding birds work restriction
- Ecology – owl mitigation measures
- External lighting plan
- Hours of operation
- Landscaping scheme
- In association with adjacent business