



East Suffolk  
Community  
Partnerships  
*Bringing ideas to life*

Felixstowe  
Peninsula

## Felixstowe Peninsula Community Partnership

**Chair:** Councillor Mark Jepson (East Suffolk Council)

**Vice-Chair:** Councillor Sharon Harkin (Felixstowe Town Council)

**East Suffolk Councillors:**

Councillor Stuart Bird	Councillor Mark Jepson
Councillor Mike Deacon	Councillor Richard Kerry
Councillor Steve Gallant	Councillor Mick Richardson
Councillor Tracey Green	Councillor Steve Wiles

**Suffolk County Councillor:**

Councillor Graham Newman

**Partnership Organisations:**

Local Town and Parish Councils  
Suffolk Constabulary  
Ipswich and East Suffolk Clinical  
Commissioning Group  
Community Action Suffolk  
Felixstowe Forward  
Business Community  
Youth Community  
Environment

Members of the **Felixstowe Peninsula Community Partnership** are invited to a meeting to be held at Bucklesham & Foxhall Village Hall, Levington Lane, Bucklesham, Ipswich, IP10 0DR  
on **Tuesday, 26 April 2022 at 1.00pm**

### Agenda

### Pages

**1 Welcome, housekeeping and overview of the session**  
Mark Jepson, Felixstowe Peninsula Community Partnership Chair

**2 Refreshed Data Pack for the Community Partnership Area**  
Nicole Rickard, ESC Head of Communities  
Chloe Lee, ESC Communities Officer

**1 - 27**

### 3 Identifying the new priorities

- a) Table Discussion
  - b) Ideas wall - what else matters to you?
  - c) Agreeing suggestions from each table
  - d) Feedback from each table
- SHORT BREAK
- e) Agreeing the new priorities

### 4 Mapping session - identifying projects to support the new priorities

All

### 5 Agreeing any actions

All

### 6 Date of next meeting

Thursday 23 June 2022, 2pm, Trimley Welcome Hall, Trimley St Mary

#### Filming, Videoing, Photography and Audio Recording at Partnership Meetings

The Council and members of the partnership may record / film / photograph or broadcast this meeting.

The Council cannot guarantee public seating areas will not be filmed or recorded. By entering the Conference Room and sitting in the public seating area, those present will be deemed to have consented to the possible use of filmed images and sound recordings. If you do not wish to be recorded, please speak to a member of the Democratic Services team at the earliest opportunity.

If you require this document in large print, audio or Braille or in a different language, please contact the Democratic Services Team on 01502 523521 or email:

[democraticservices@eastsuffolk.gov.uk](mailto:democraticservices@eastsuffolk.gov.uk)



**The national Charter and Charter Plus Awards for Elected Member Development**  
 East Suffolk Council is committed to achieving excellence in elected member development  
[www.local.gov.uk/Community-Leadership](http://www.local.gov.uk/Community-Leadership)

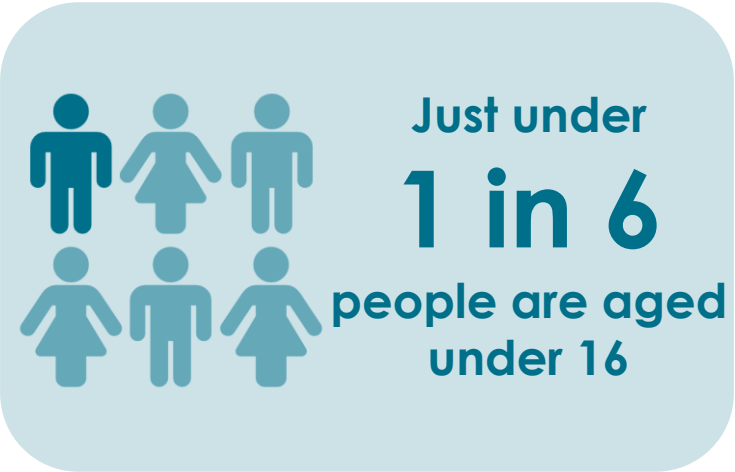
# Felixstowe Peninsula Community Partnership profile

2022 update

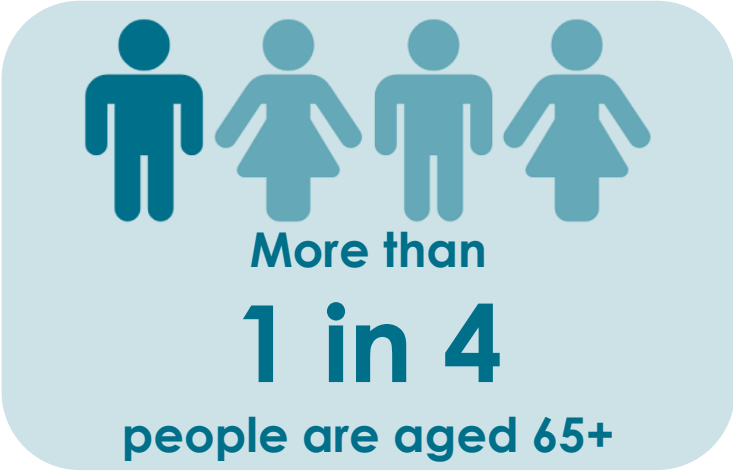


# Population

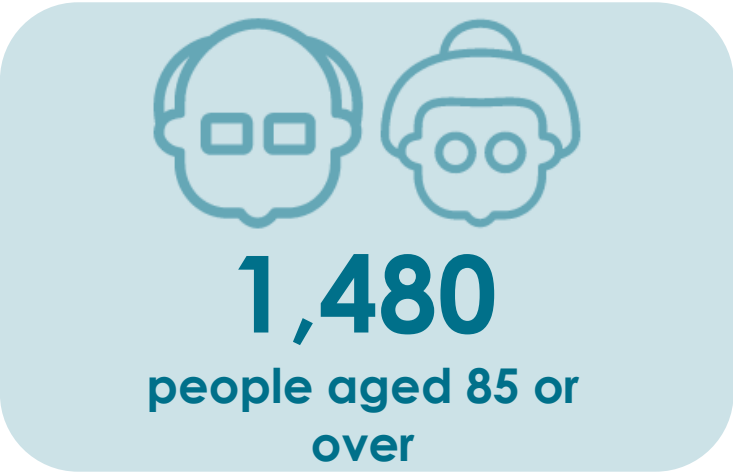
## Key facts



15.5%; national average 18.9%



29.2%; national average 18.7%



4.3% of total population; national  
average 2.5%

# Population

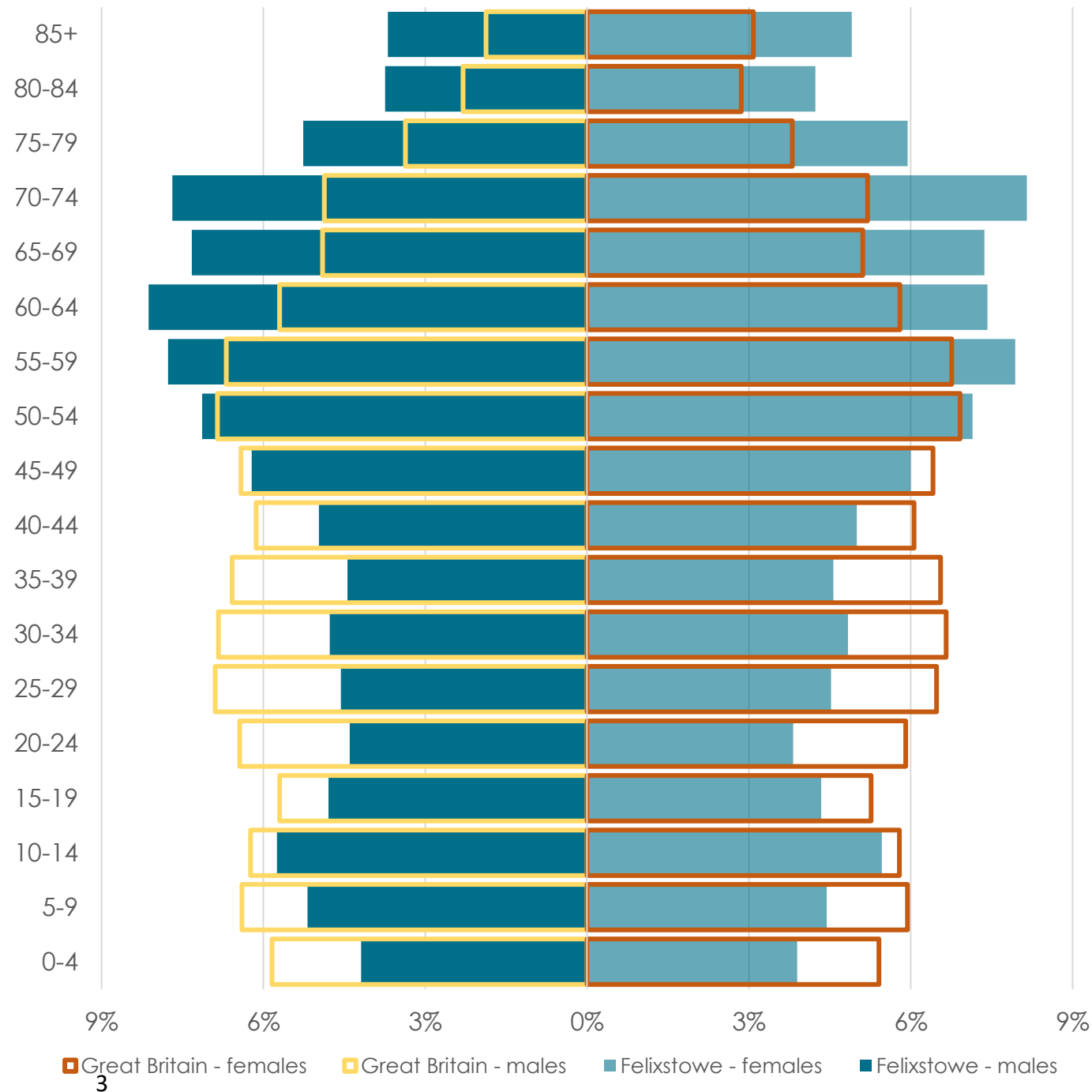
## Age breakdown

The age pyramid shows the age breakdown of the population of Felixstowe Pensinula against the national average

Most over-represented age group: **85+**

Most under-represented age group: **20-24**

All groups below the age of 50 account for a smaller proportion of the Felixstowe Pensinula population than they do across Great Britain as a whole



# Deprivation

## Key facts



**3,410**

people affected by  
income deprivation

9.9%

Suffolk average 10.0%



**9.5%**

of working age  
people affected by  
employment  
deprivation

Suffolk average 8.3%  
1,730 people



**720**

children affected by  
income deprivation

13.6%

Suffolk average 13.6%



**1,190**

older people affected  
by income deprivation

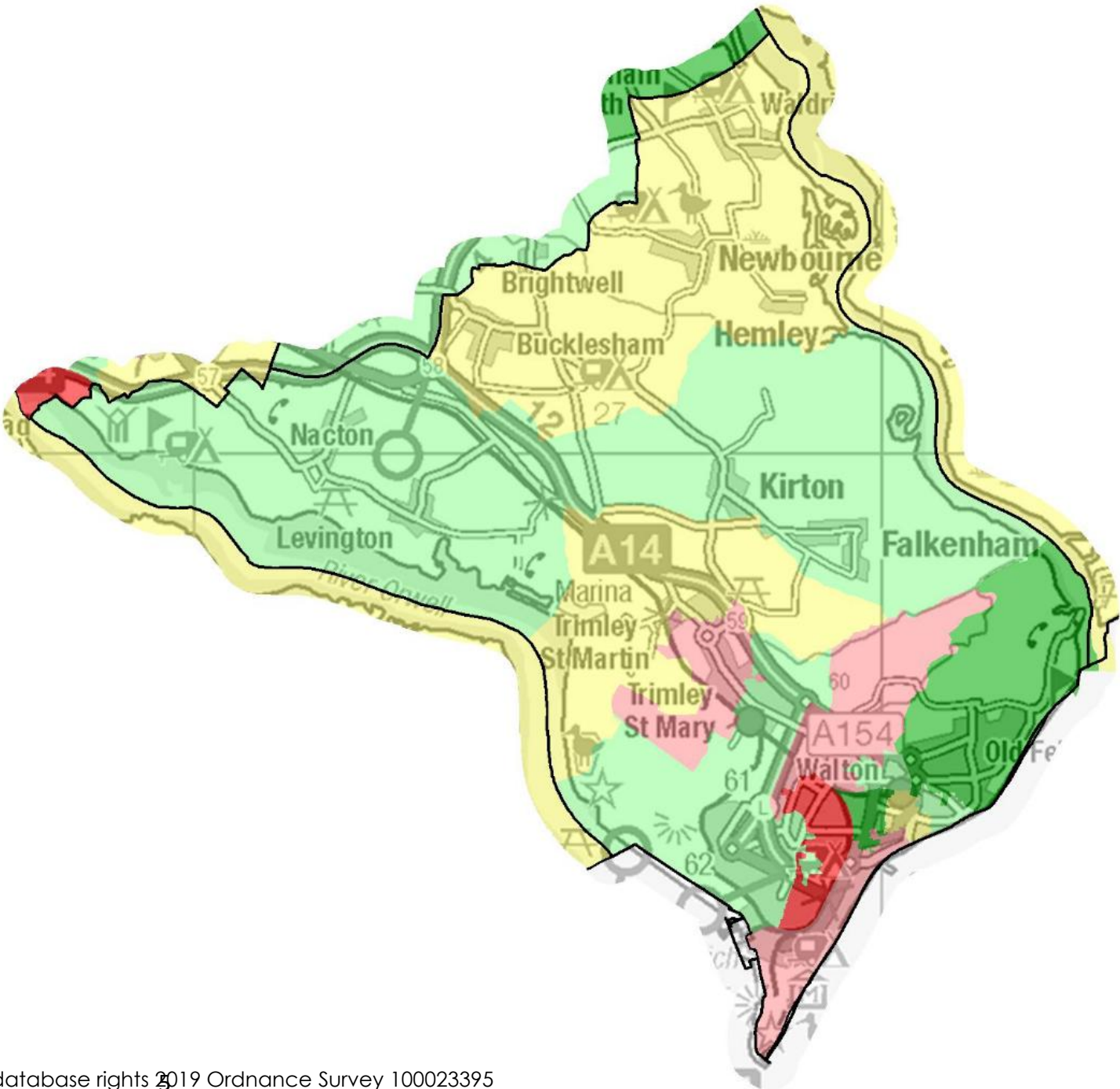
9.4%

Suffolk average 10.4%

# Deprivation Overall

IMD quintile	Population	% of population
1	3,300	10%
2	9,620	28%
3	4,580	13%
4	10,010	29%
5	6,830	20%

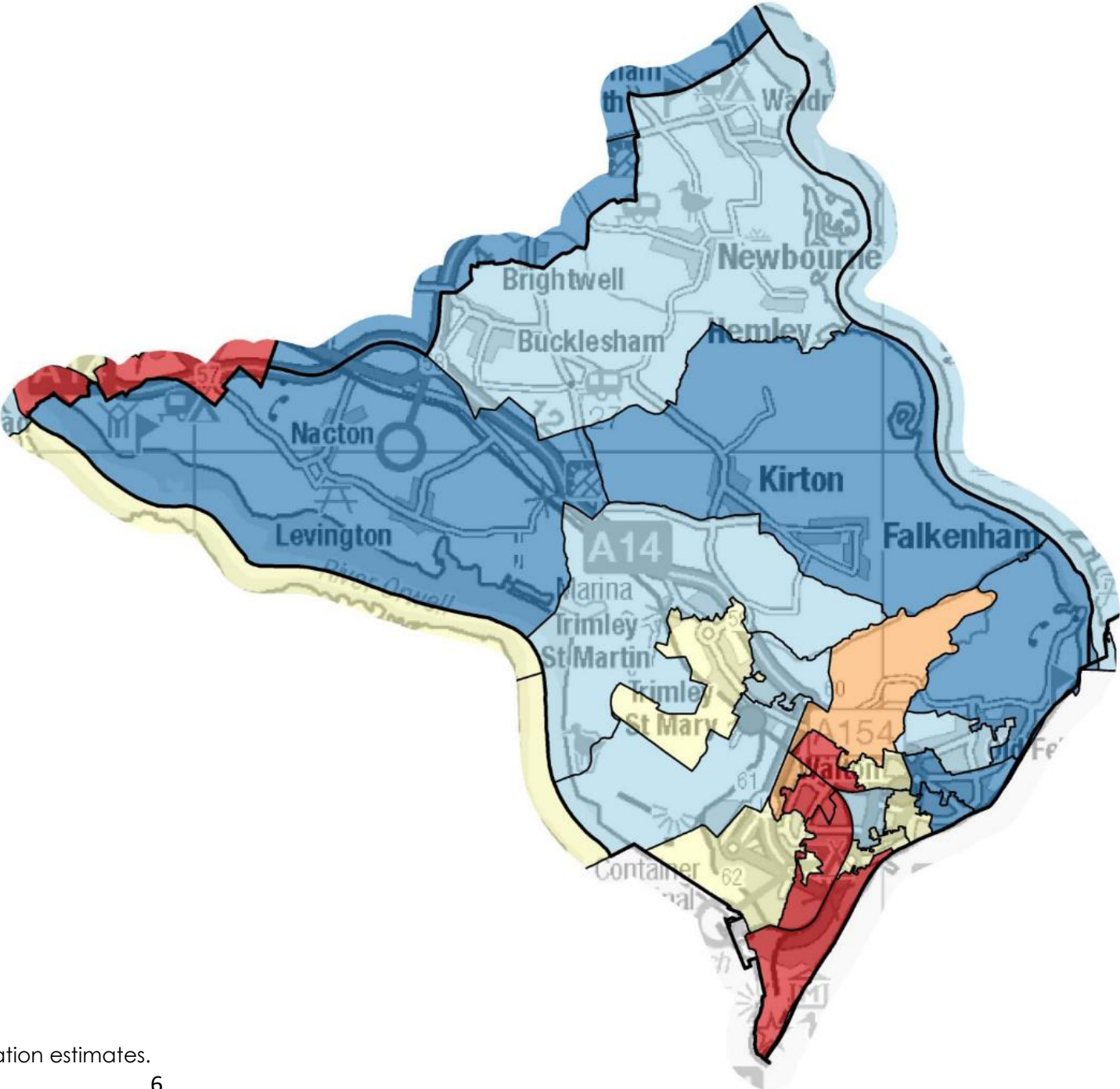
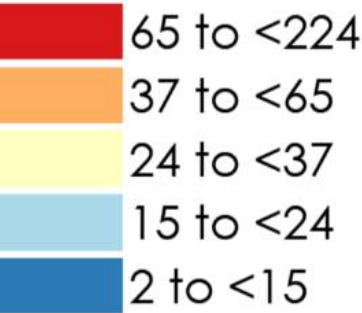
1 = most deprived 20% of areas in England  
5 = least deprived 20% of areas in England





# Deprivation Children

Children aged 0-15 income deprived



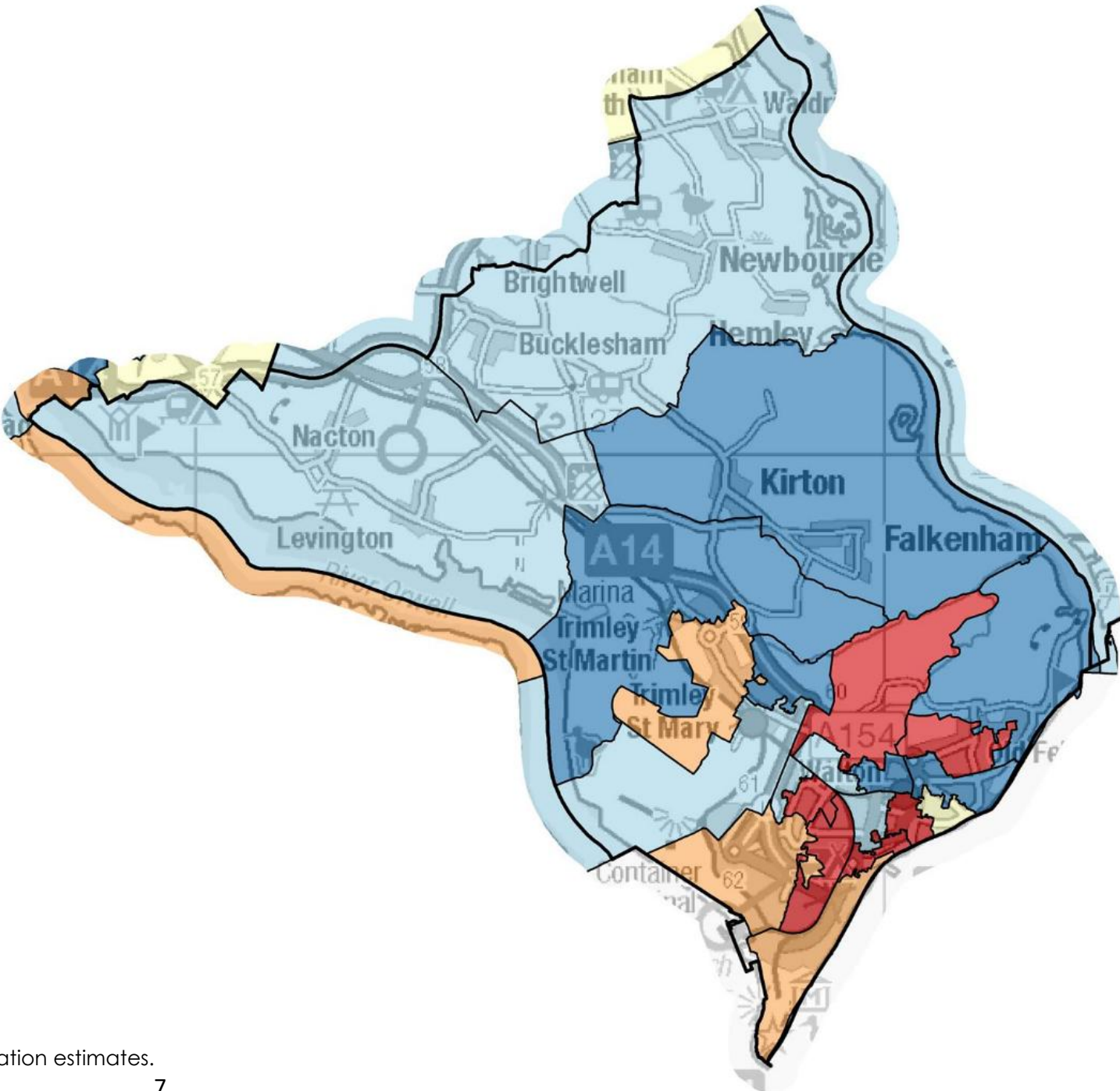
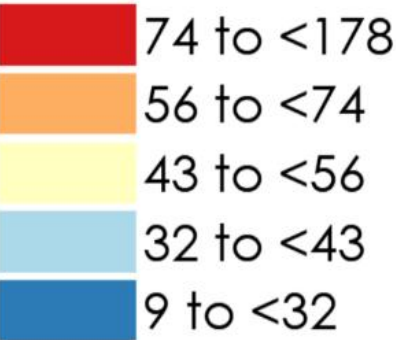
Sources: DCLG Index of Multiple Deprivation 2019 and ONS 2020 mid-year population estimates.  
Map © Crown copyright and database rights 2022 Ordnance Survey 100023395



# Deprivation

## Older people

### People aged 60+ income deprived



# Health and social care

## Life expectancy

Ward/comparator area	Life expectancy at birth for males	Life expectancy at birth for females
Eastern Felixstowe	79.8	82.9
Orwell & Villages	80.7	86.4
Western Felixstowe	79.5	82.9
East Suffolk	80.7	83.9
Suffolk	80.9	84.2

Highest and lowest life expectancy in East Suffolk		
Melton Ward (Woodbridge CP)	85.9	90.5
Harbour & Normanston Ward (Lowestoft CP)	75.1	80.5



1.2 years

the gap in life expectancy for males between Western Felixstowe and Orwell & Villages Wards



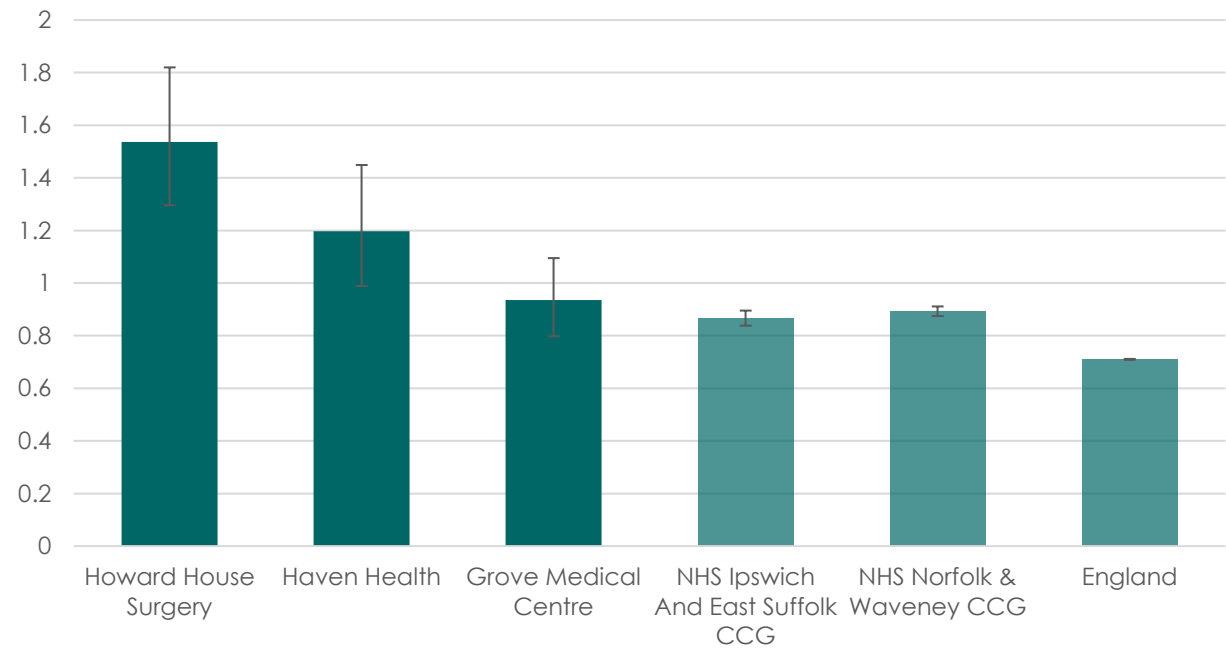
3.5 years

the gap in life expectancy for females between Eastern and Western Felixstowe and Orwell & Villages Wards

# Health and social care

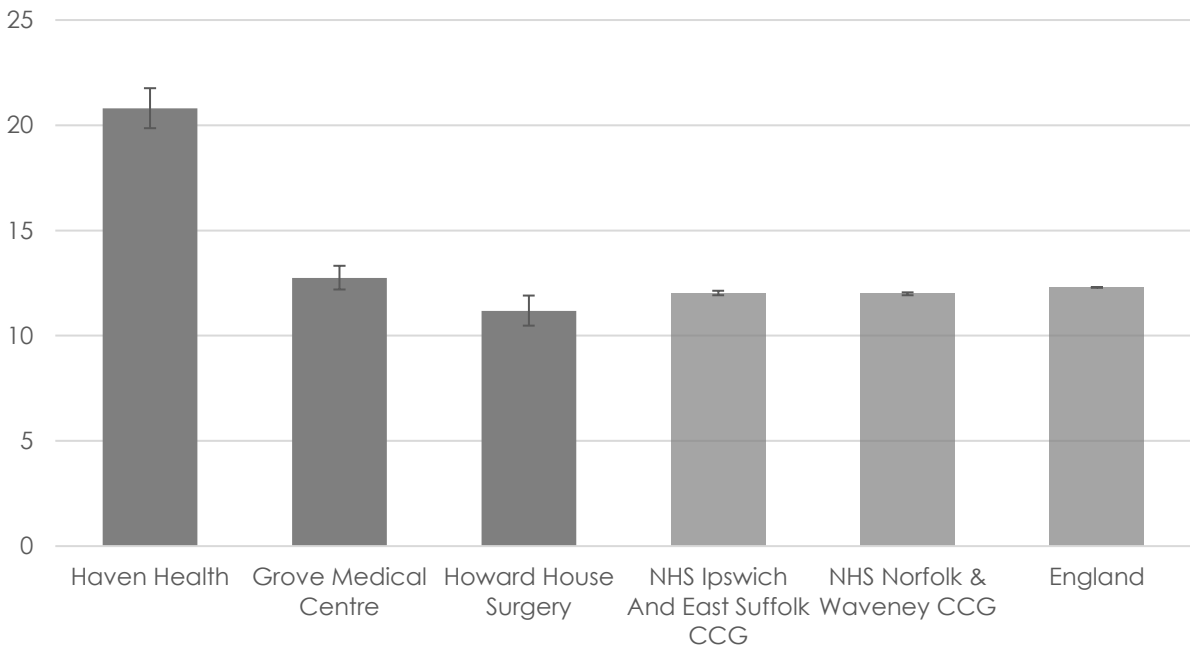
## Mental health

Dementia: QOF prevalance (all ages)



Prevalence of dementia is higher than the national average among patients at Grove Medical Centre, Howard House Surgery and Haven Health

Depression: recorded prevalence (aged 18+)



Prevalence of depression is higher than the national average among patients at Haven Health and Grove Medical Centre

# Health and social care

## Mental health

### Depression

Lower Similar Higher Not compared

Quintiles: Low High Not applicable

Indicator	Period		England	Felixstowe ESCP GPs	D83015 - Howard House Surgery	D83081 - Haven Health	D83048 - Grove Medical Centre
<b>Depression</b>							
Depression: Recorded prevalence (aged 18+)	2020/21		12.3	14.3*	11.2	20.8	12.7
Depression: QOF incidence (18+) - new diagnosis	2020/21		1.4	1.5*	0.8	1.6	1.8
Personalised Care Adjustment (PCA) rate for depression indicator	2020/21		21.0	20.9*	45.0	18.3	16.2
DEP003 - Newly diagnosed patients with depression who had a review 10-56 days after diagnosis (denominator incl. PCAs)	2020/21		47.2	64.7*	51.7	51.4	73.7

# Health and social care

## Mental health

## Dementia

Lower Similar Higher Not compared

Quintiles: Low High Not applicable

Indicator	Period		England	Felixstowe ESCP GPs	D83015 - Howard House Surgery	D83081 - Haven Health	D83048 - Grove Medical Centre
<b>Dementia</b>							
Dementia: QOF prevalence (all ages)	2020/21		0.7	1.2*	1.5	1.2	0.9
Personalised Care Adjustment (PCA) rate for dementia indicators	2020/21		8.0	14.5*	20.6	5.8	15.1
% reporting Alzheimer's disease or dementia	2021		0.6	0.0*	0.0	0.0	0.0
DEM004 - Dementia care plan has been reviewed last 12mths (denominator incl. PCAs)	2020/21		39.7	64.1*	71.8	28.8	81.6
DEM005 - Blood tests recorded (den.incl.exc.) - retired after 2018/19	2018/19		70.0	85.2*	83.3	69.2	92.7

# Health and social care

## Mental health

### Other indicators

Lower Similar Higher Not compared

Quintiles: Low High Not applicable

Indicator	Period	England	Felixstowe ESCP GPs	D83015 - Howard House Surgery	D83081 - Haven Health	D83048 - Grove Medical Centre
<b>Other Mental Health disorders</b>						
Mental Health: QOF prevalence (all ages)	2020/21	0.95	1.04*	1.08	1.22	0.92
Personalised Care Adjustment (PCA) rate for MH indicators	2020/21	6.5	11.7*	21.5	3.1	14.1
% reporting a long-term mental health problem	2021	11.0	10.8*	8.7	16.0	9.3
MH002 - Patients with severe mental health issues having a comprehensive care plan (denominator incl. PCAs)	2020/21	43.1	74.8*	59.3	85.4	73.7
MH003 - Record of blood pressure check in preceding 12 months for patients on the MH register (denominator incl. PCAs)	2020/21	55.4	83.1*	78.0	87.5	81.8
MH006 - Record of BMI in the last 12 months for patients on the MH register (denominator incl. PCAs)	2020/21	54.4	85.0*	88.1	88.5	79.8

# Health and social care

## Mental health

### Other indicators

Lower Similar Higher Not compared

Quintiles: Low High Not applicable

Indicator	Period	England	Felixstowe ESCP GPs	D83015 - Howard House Surgery	D83081 - Haven Health	D83048 - Grove Medical Centre
<b>Other Mental Health disorders</b>						
MH007 - Record of alcohol consumption for patients on the MH register (last 12 mnths), den. incl. exc. - retired after 2018/19	2018/19	81.1	87.7*	78.9	95.7	83.3
MH008 - Female patients (25-64 yrs) on the MH register who had cervical screening test in preceding 5 years (den. incl. exc.) - retired after 2018/19	2018/19	70.5	71.4*	70.0	60.9	80.0
MH009 - Patients on lithium therapy with record of serum creatinine and TSH in the preceding 9 months (den.incl.exc.) - retired after 2018/19	2018/19	94.5	100*	100	100	100
MH010 - Patients on lithium therapy with levels in therapeutic range in preceding 4 months (den.incl.exc.) - retired after 2018/19	2018/19	82.8	91.7*	75.0	100	95.2



# Health and social care

## Childhood weight

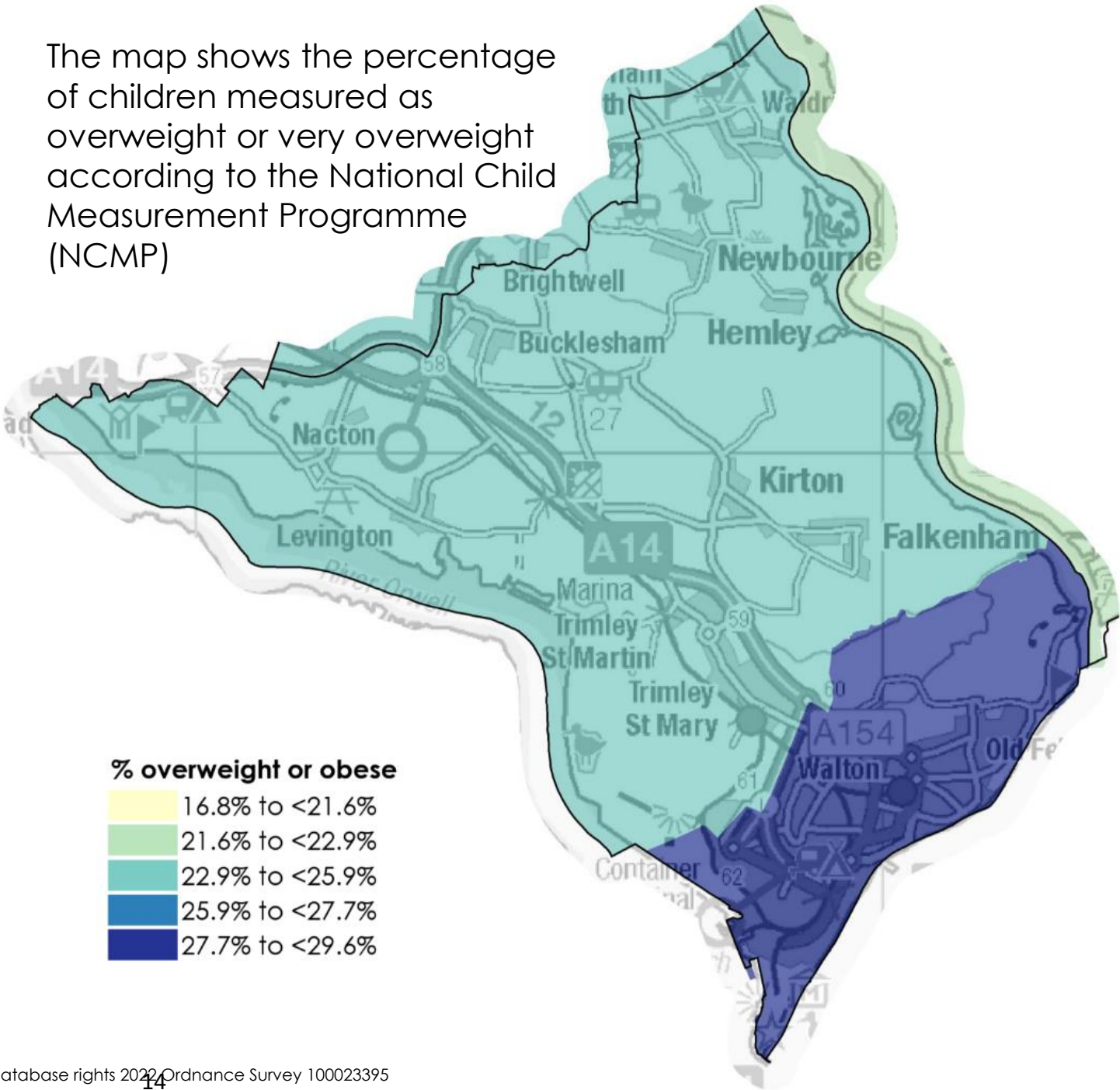


Primary school children  
overweight or obese

Lowest CP: Southwold & Kessingland  
20.1%

Highest CP: Felixstowe 27.9%

The map shows the percentage of children measured as overweight or very overweight according to the National Child Measurement Programme (NCMP)



# Health and social care

## Physical activity



**38.9%**

of adults complete 2+ hours of  
exercise per week

Lowest CP: Lowestoft 37.3%  
Highest CP: Kesgrave & Martlesham 43.9%  
UK average: 39.1%



**29.7%**

of adults do not exercise

Lowest CP: Kesgrave & Martlesham 22.1%  
Highest CP: Lowestoft 32.0%  
UK average: 29.5%

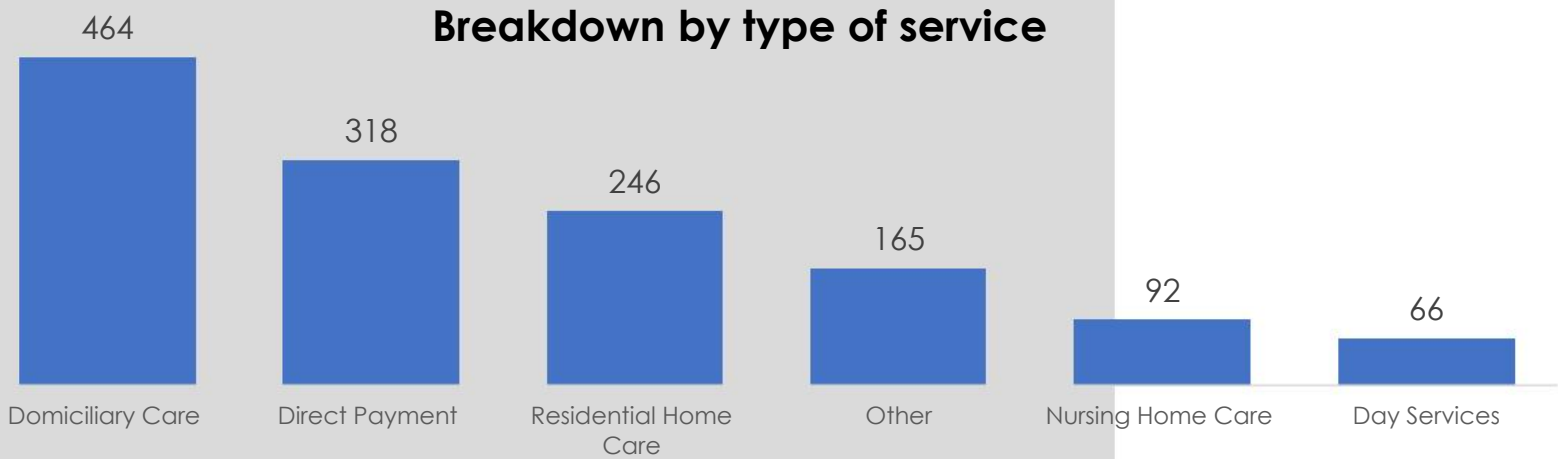
# Health and social care

## Adult care

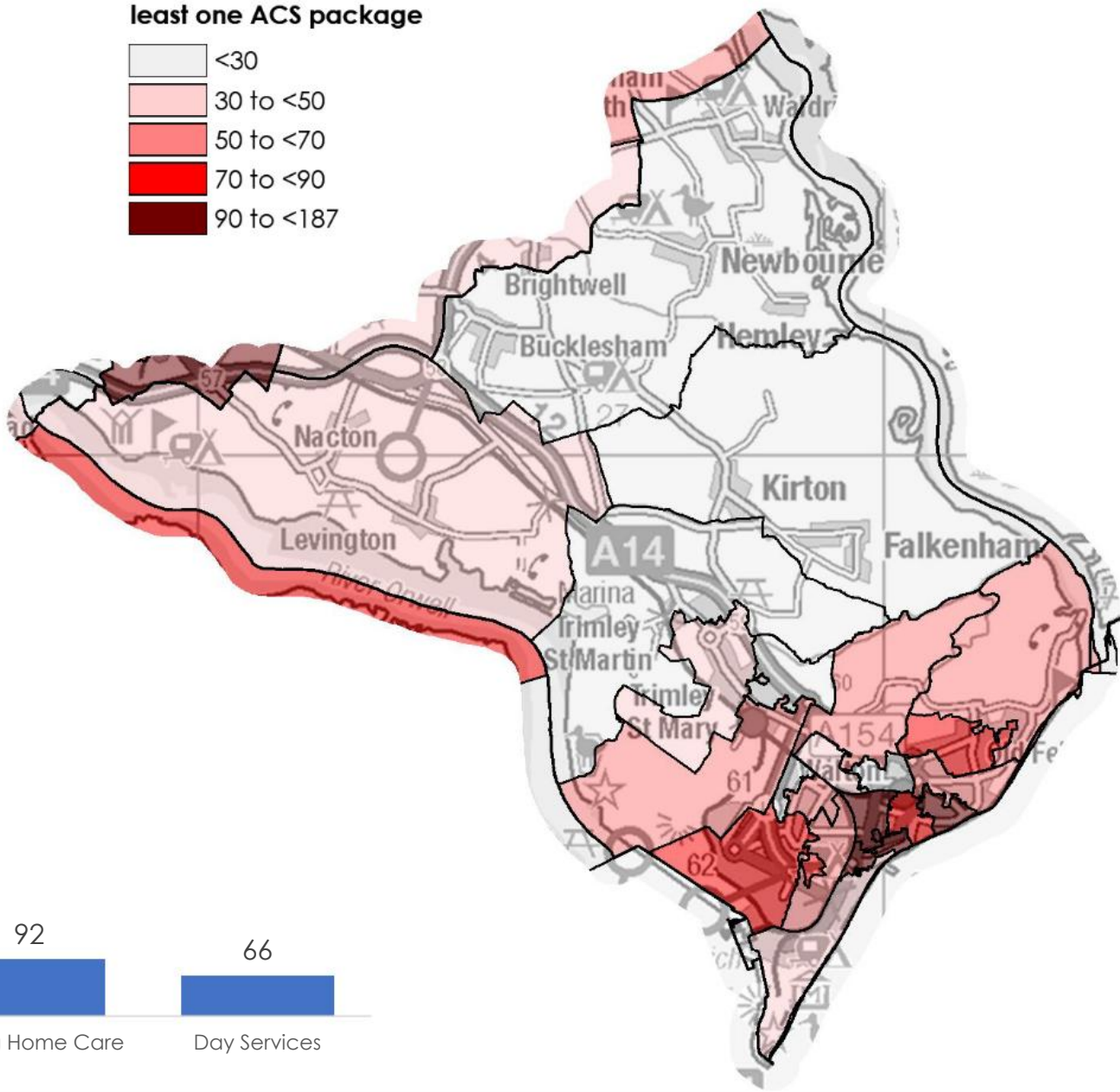
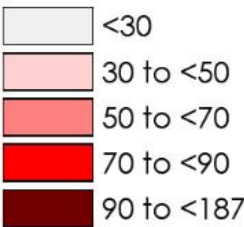


**1,140**  
Adults received a  
social care service  
in the last two years

Breakdown by type of service



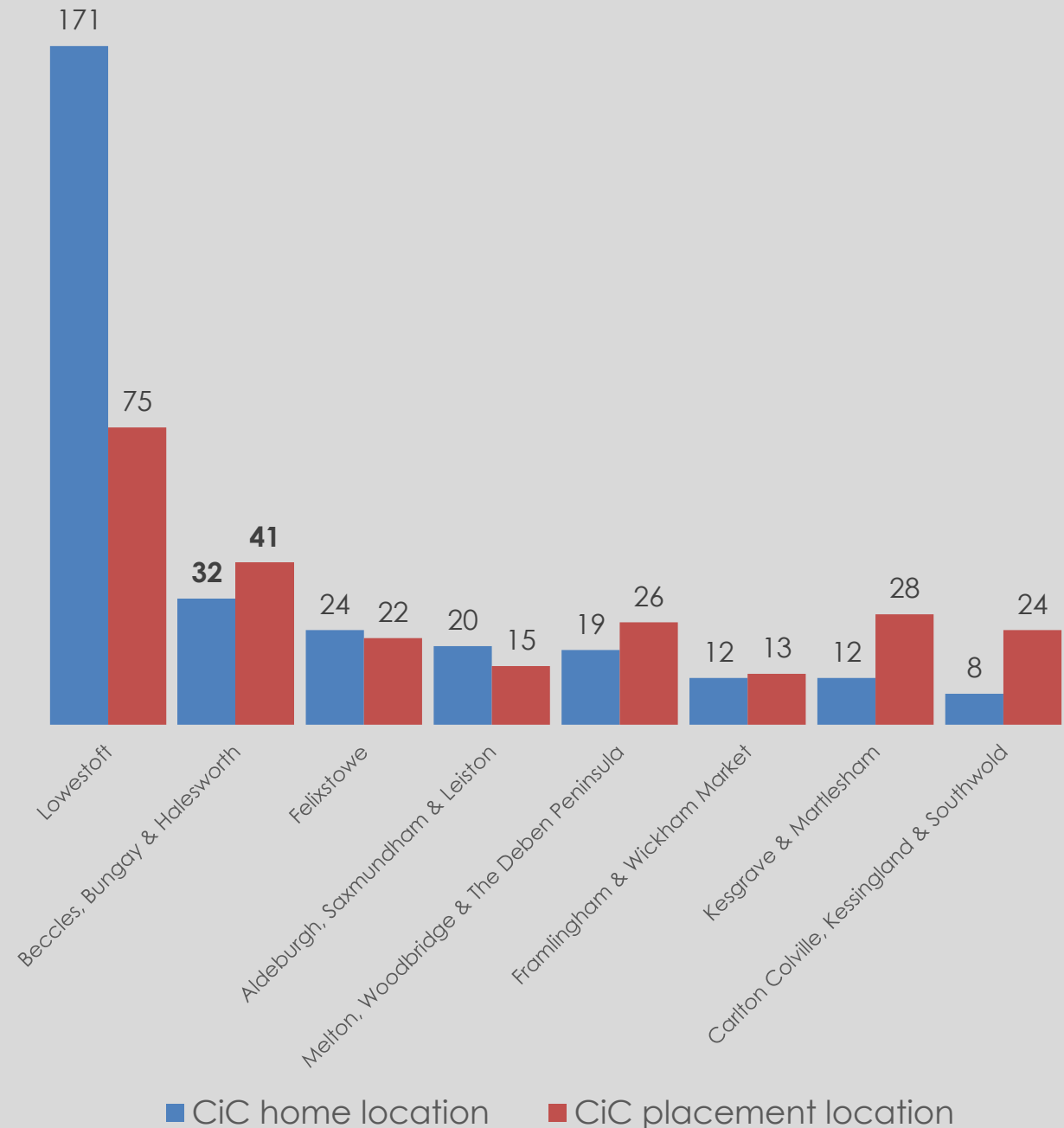
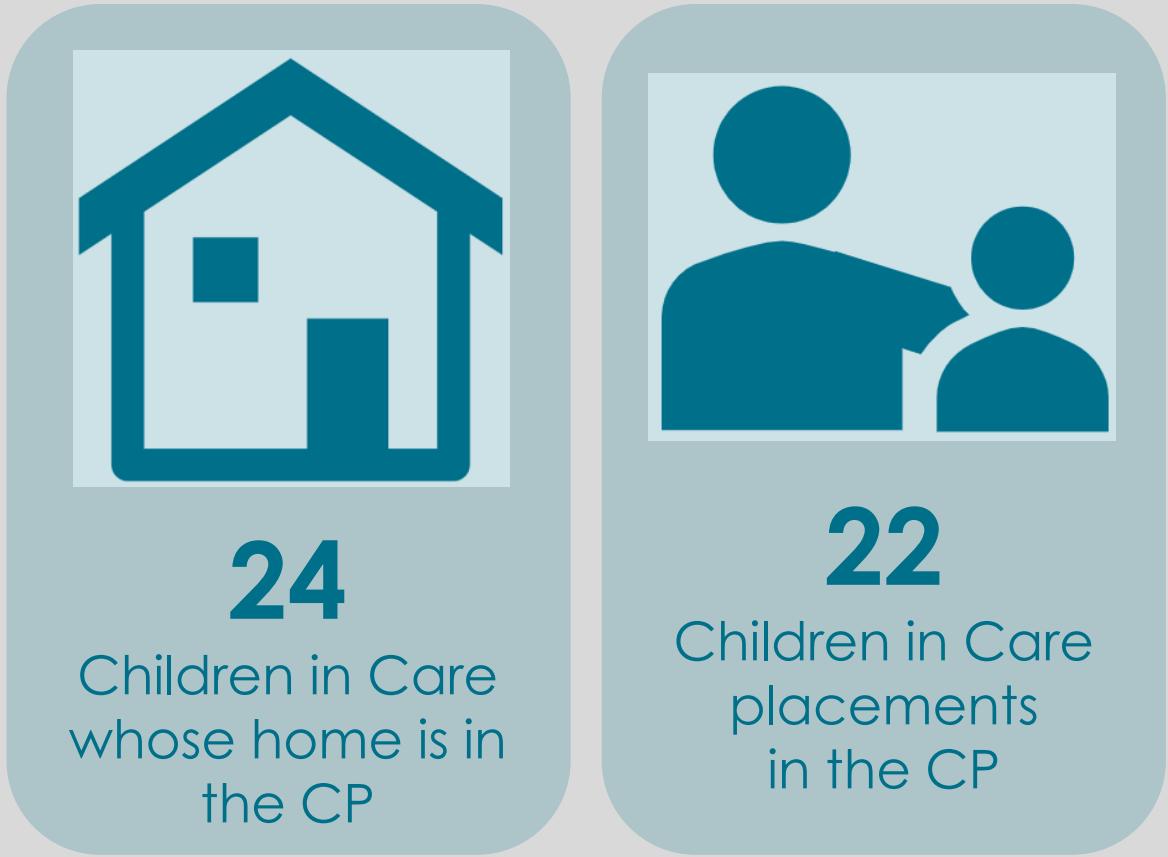
Adults receiving at least one ACS package



Source: Suffolk County Council ACS. Two years data to July 2019

# Health and social care

## Children's care



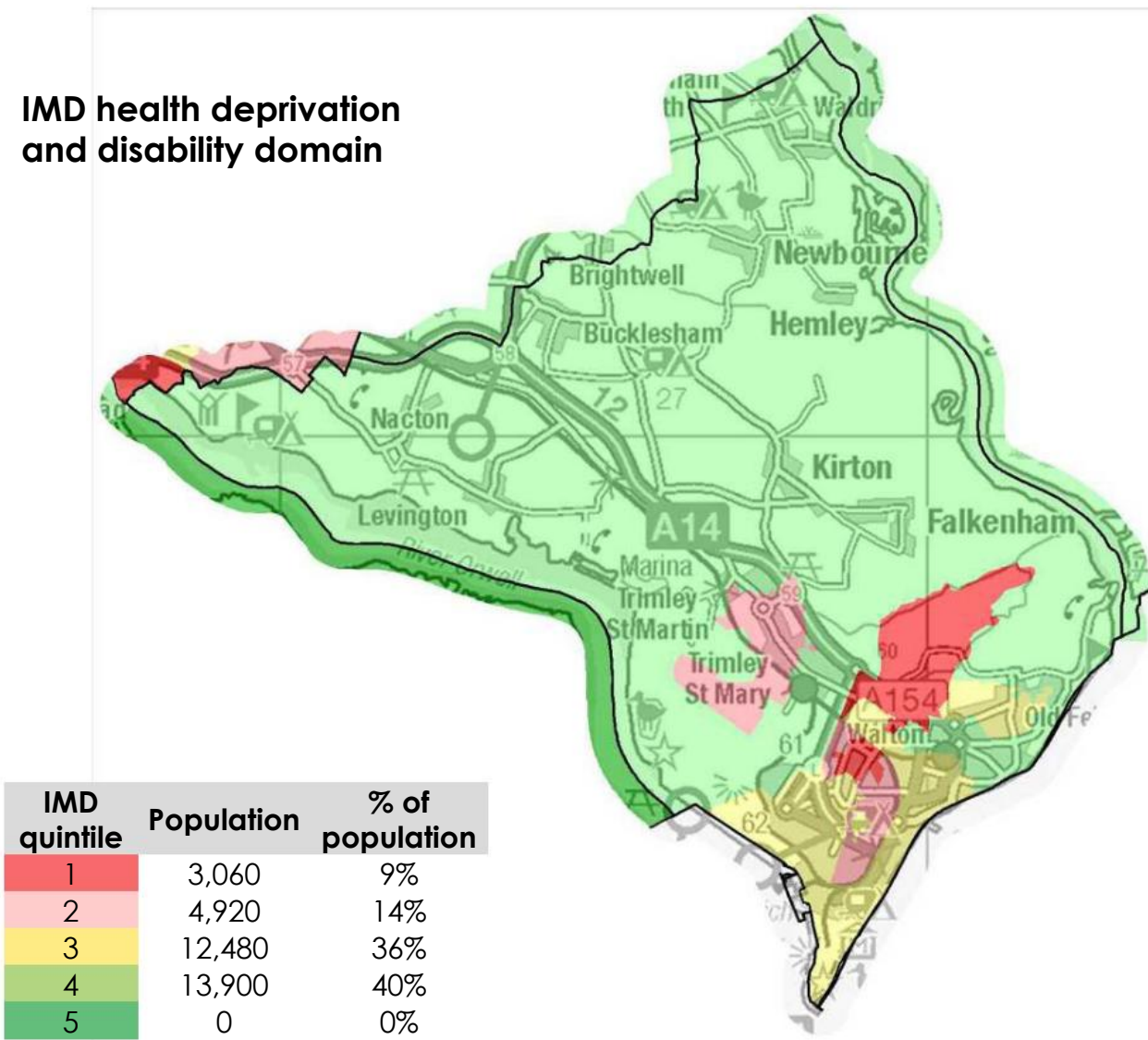
Source: Suffolk County Council CYP iHub. July 2019 data



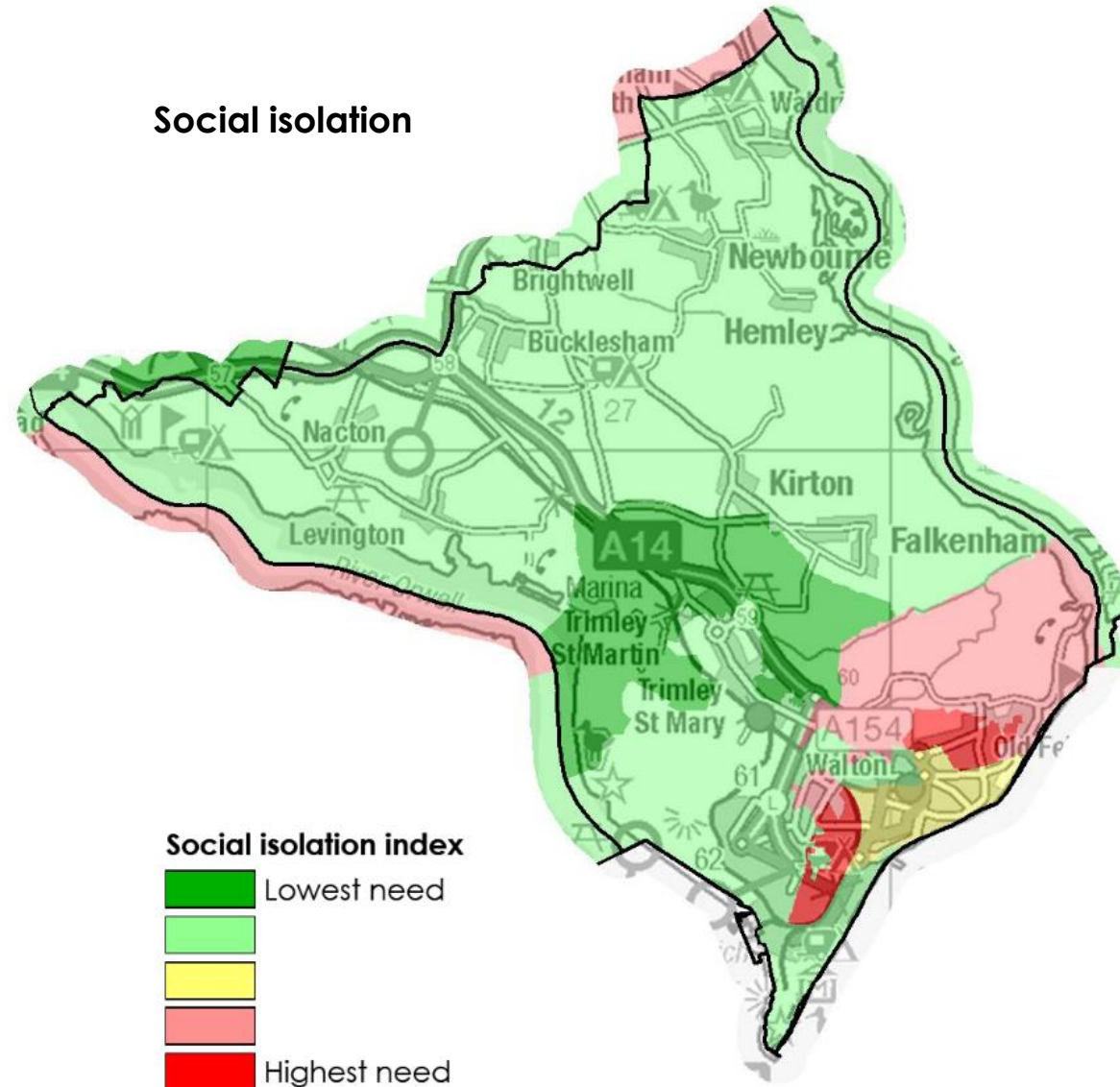
# Health and social care

## Disability and social isolation

IMD health deprivation and disability domain



Social isolation



Source: DCLG Index of Multiple Deprivation 2019. Map © Crown copyright and database rights 2019 Ordnance Survey 100023395

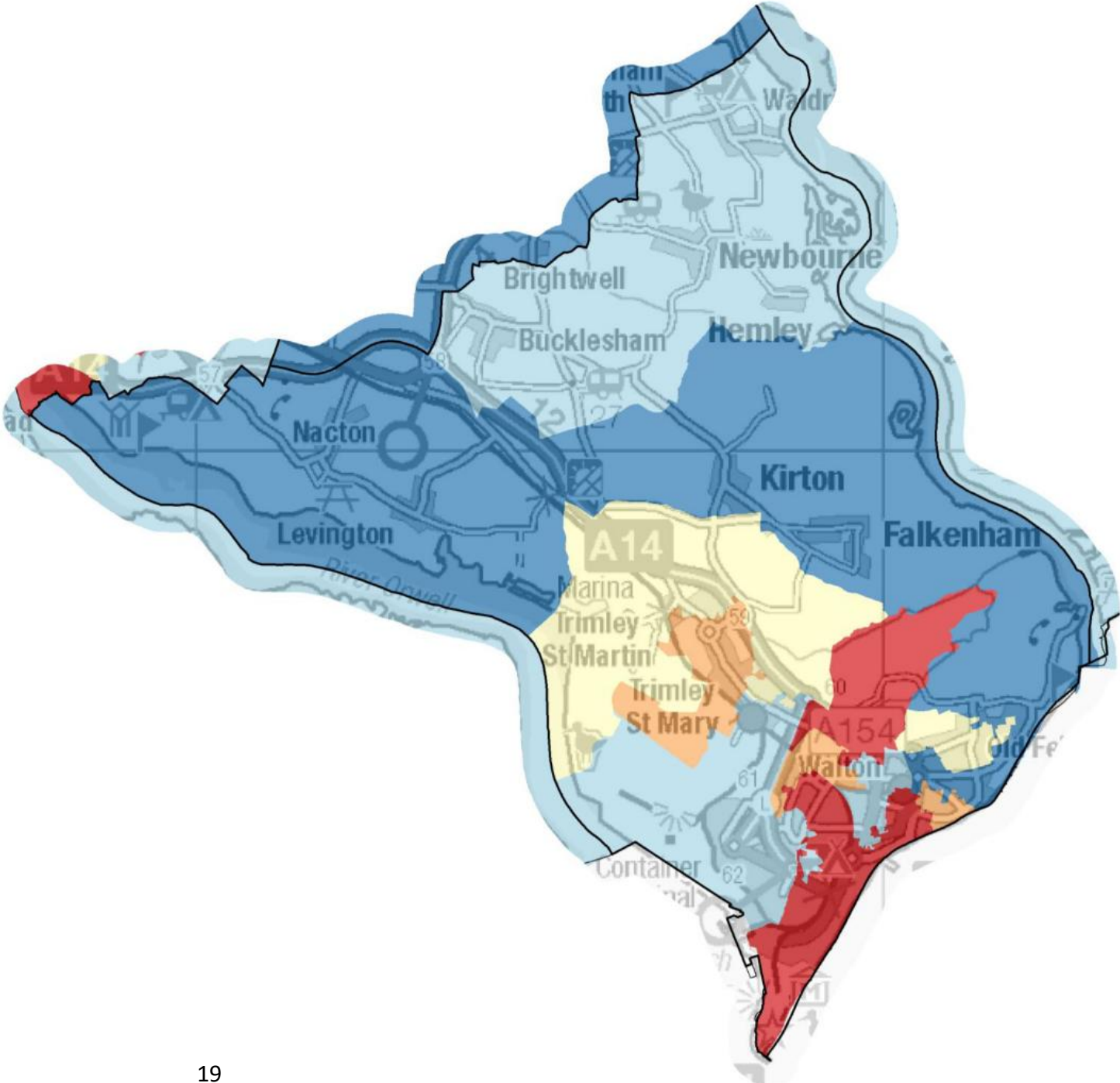
# Health and social care

## Loneliness

Age UK loneliness research

**Legend**

- Highest levels of loneliness (top 20%)
- Mid 20%
- Lowest levels of loneliness (bottom 20%)



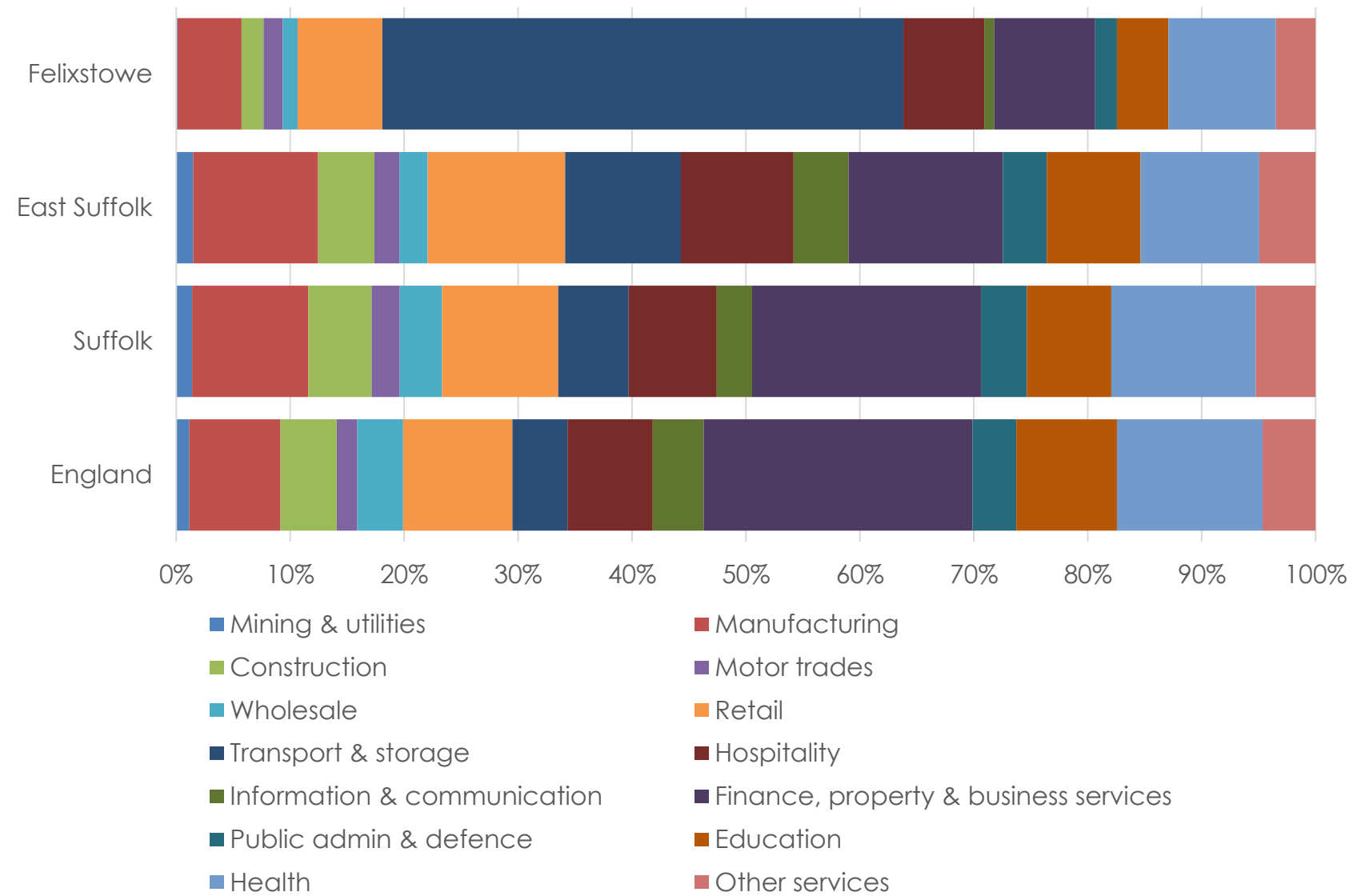
Source: Age UK 2016. Map © Crown copyright and database rights 2022 C

# Employment and education

## Employment



**Transport & storage**  
accounts for almost  
**1 in 2**  
jobs in Felixstowe 1 in 17  
across Suffolk and 1 in 20  
in England





# Employment and education

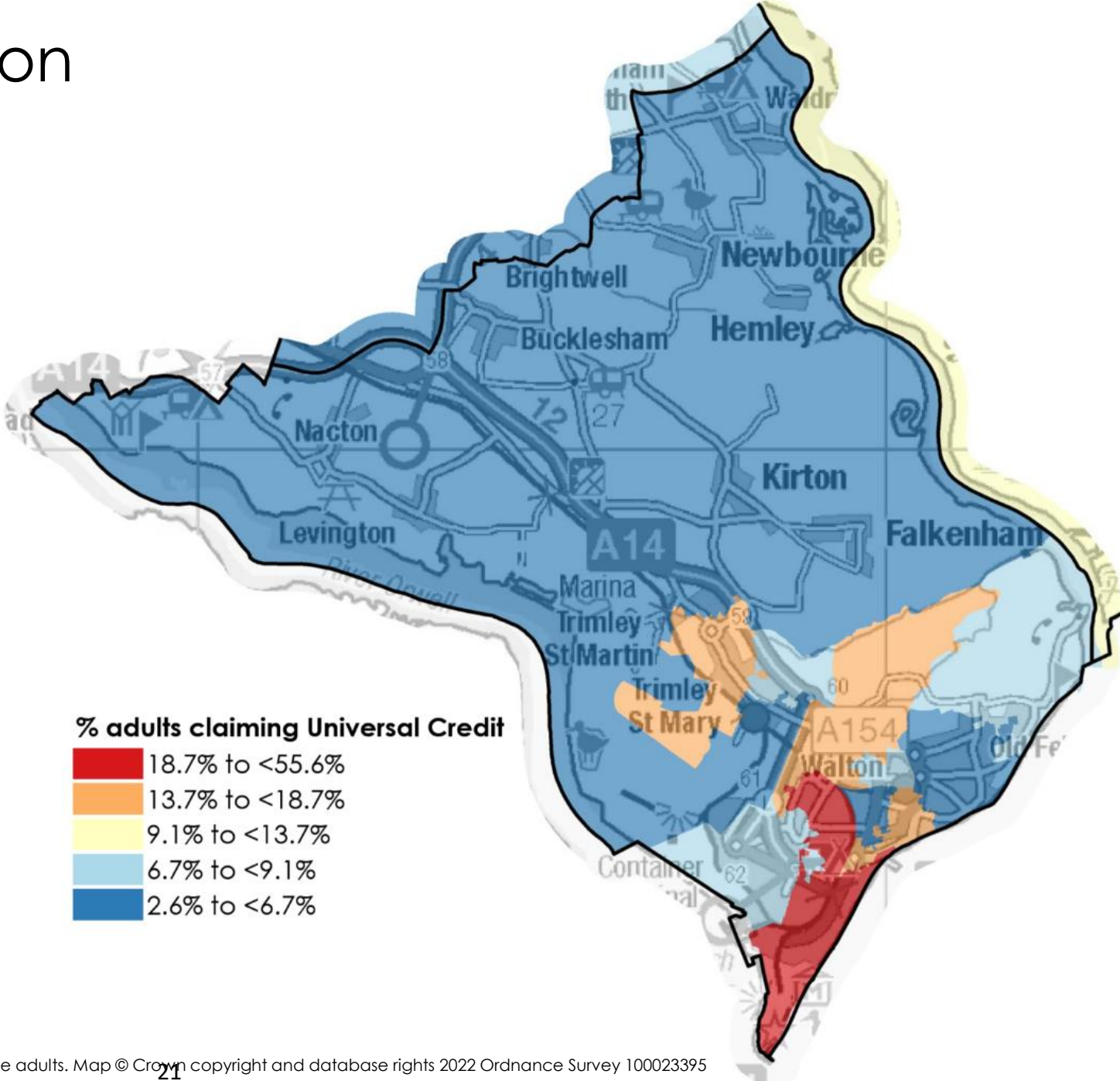
## Benefit claimants



**10.7%**  
of adults in receipt of  
Universal Credit

Highest CP: Lowestoft 23.8%

Lowest CP: Kesgrave  
& Martlesham 6.3%



# Employment and education

## Education – Key Stage 2

### Ofsted breakdown



9

Outstanding or Good



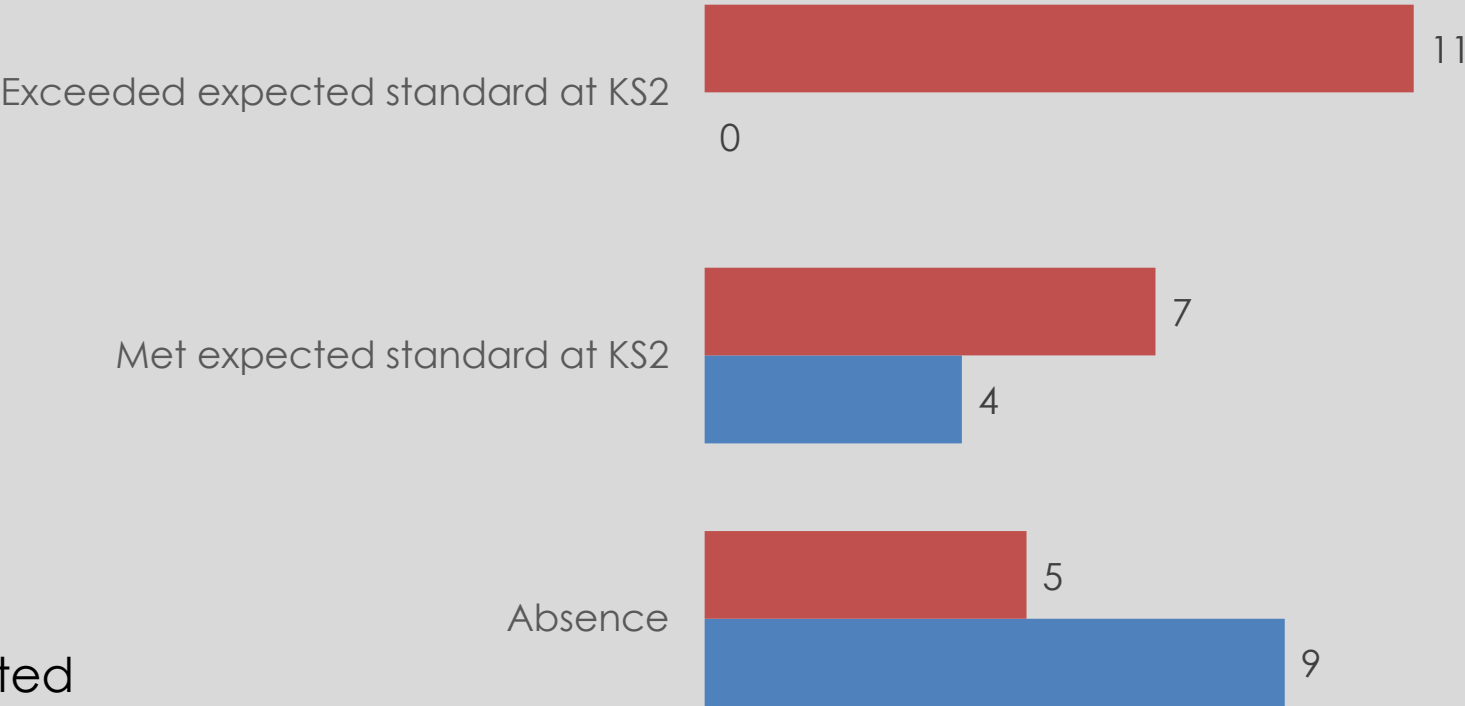
1

Require improvement  
or Inadequate

1 Primary school has not yet been inspected

### Number of Felixstowe Peninsula schools where the % of KS2 pupils...

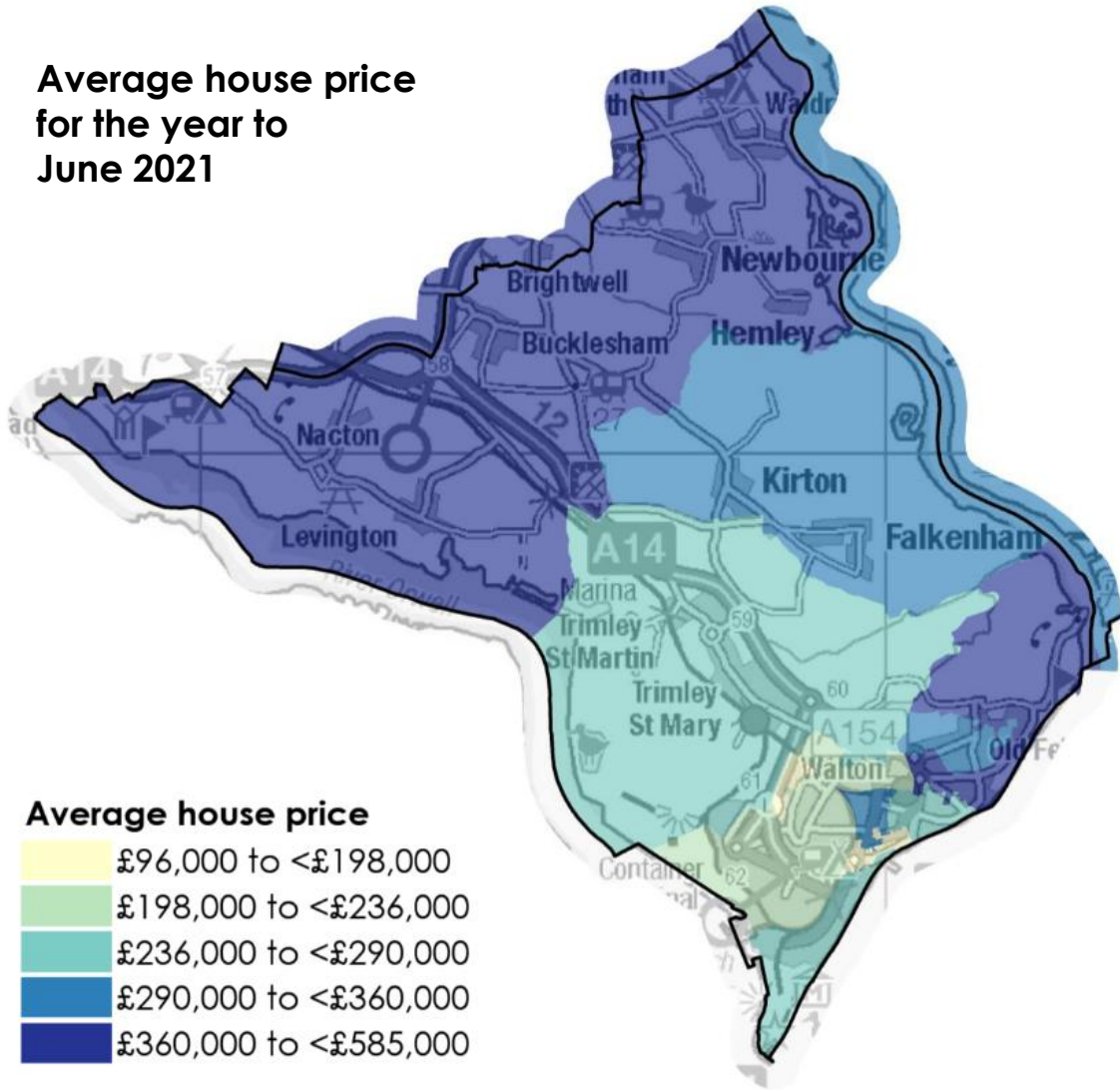
■ Worse than England average    ■ Better than England average



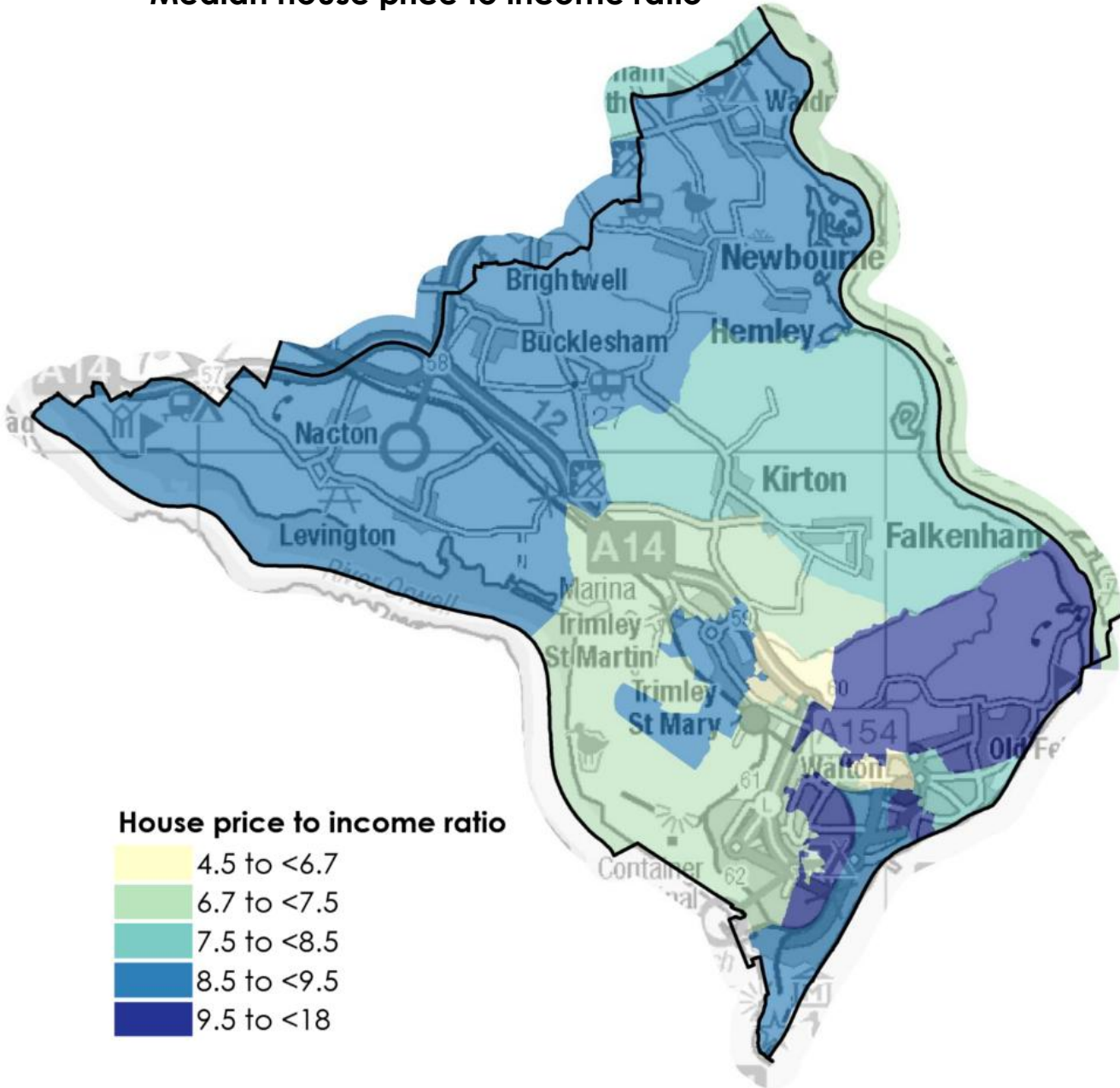
# Housing

## Prices and affordability

Average house price  
for the year to  
June 2021



Median house price to income ratio





# Housing Living environment



**2,830**  
houses in poor condition;  
18.3% of all houses, the  
lowest proportion of any CP

Highest CP: Framlingham &  
Wickham Market 44.0%

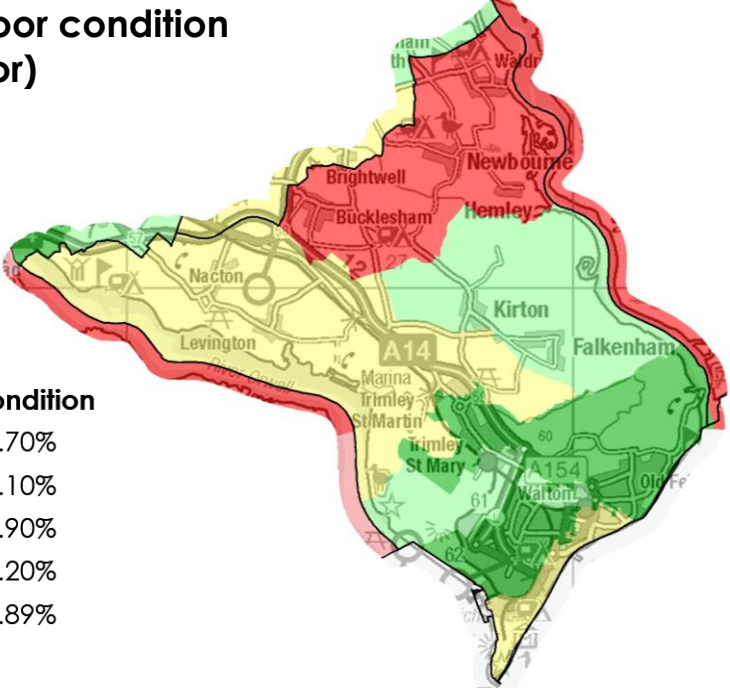
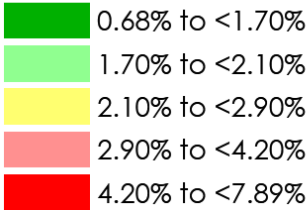


**520**  
hard to heat homes;  
3.3% of all houses

Lowest CP: Kesgrave & Martlesham 1.4%  
Highest CP: Lowestoft 3.7%

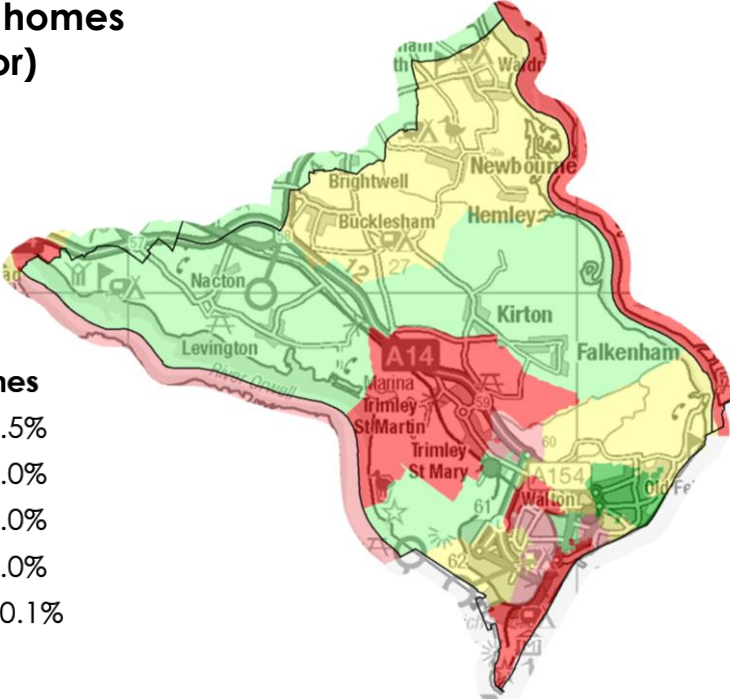
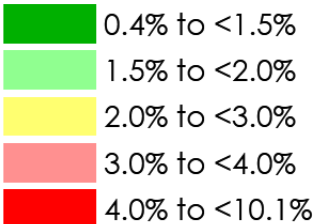
## Housing in poor condition (IMD indicator)

Housing in poor condition



## Hard to heat homes (IMD indicator)

Hard to heat homes



# Environment

## Air quality and attitudes towards climate change



**48.5%** pay more for green products (UK 50.7%)



**2.6%** do not buy something due to too much packaging (UK 2.7%)



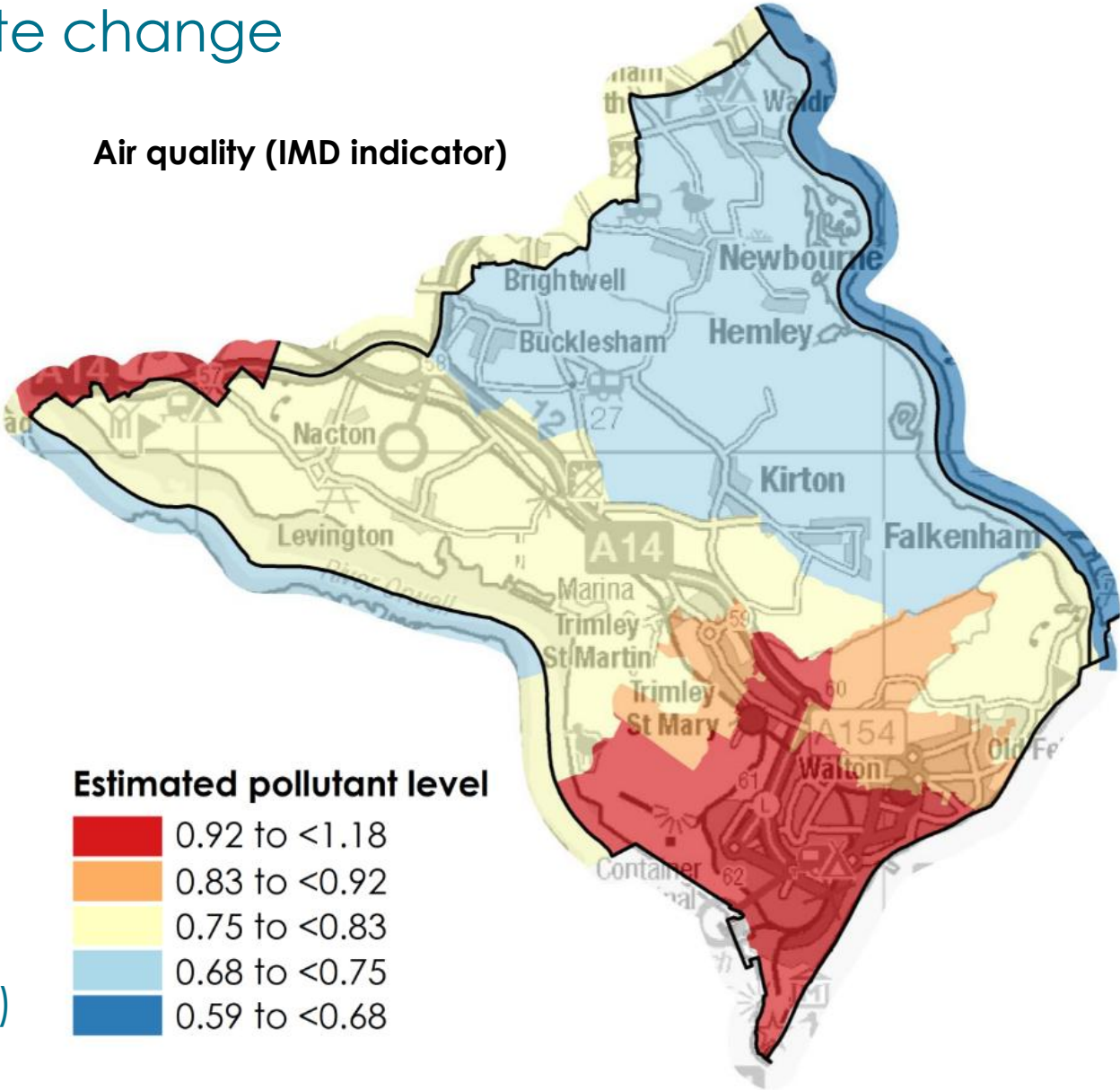
**52.8%** recycle items rather than throwing away (UK 50.9%)



**30.9%** make effort to cut down on water usage (UK 29.3%)



**45.6%** have a reasonable knowledge of climate change (UK 46.2%)



# Community/services

## Transport



83.4%

of homes are within 1/4 of a mile of a frequent\* bus service, the 2<sup>nd</sup> highest of any CP

Lowest CP: Framlingham & Wickham Market 38.3%  
Highest CP: Kesgrave & Martlesham 84.9%

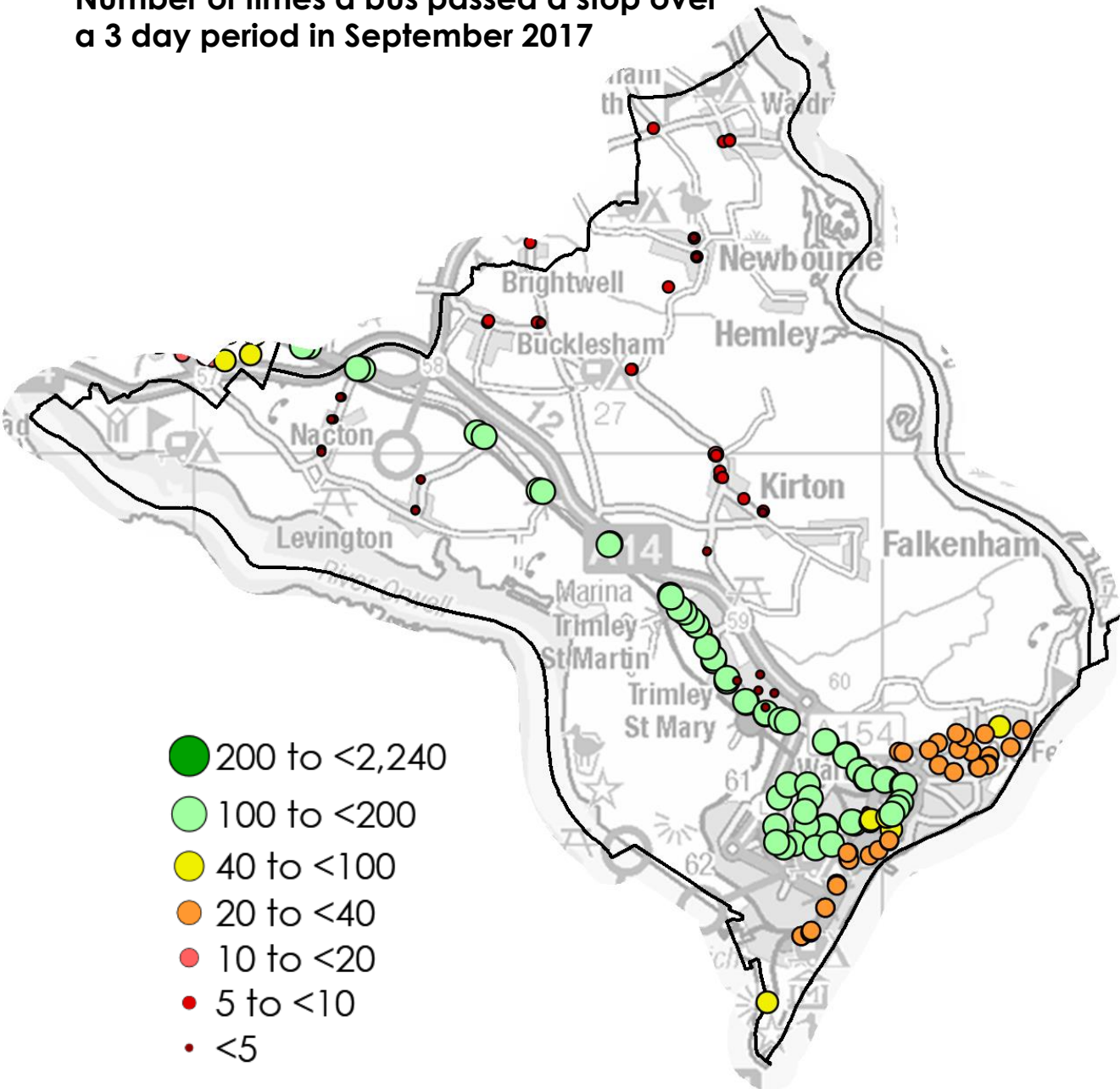


1.0%

of homes are more than 2 miles from a frequent\* bus service, the 3<sup>rd</sup> lowest of any CP

Lowest CP: Kesgrave & Martlesham 0.0%  
Next highest CP: Framlingham & Wickham Market: 20.8%

Number of times a bus passed a stop over a 3 day period in September 2017



Source: Bus stop data: Suffolk County Council. Data refers to the number of stops a bus made during a three day period in September 2017. \*In this case "frequent" means an average of 5 times per day or more  
Map © Crown copyright and database rights 2019 Ordnance Survey 100023395.

# Population by Parish

Parish name	Population
Felixstowe	24,560
Trimley St. Mary	3,830
Trimley St. Martin	2,130
Kirton	1,190
Nacton	870
Bucklesham	550
Waldringfield	460
Newbourne + Hemley	320
Levington + Stratton Hall	240
Falkenham	180