

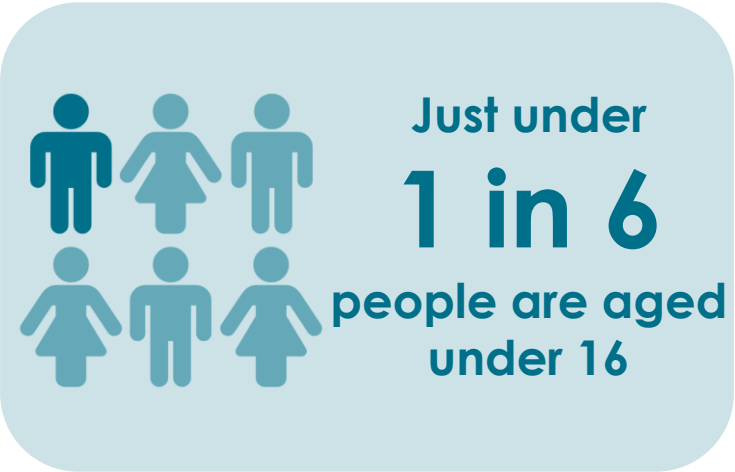
Felixstowe Peninsula Community Partnership profile

2022 update

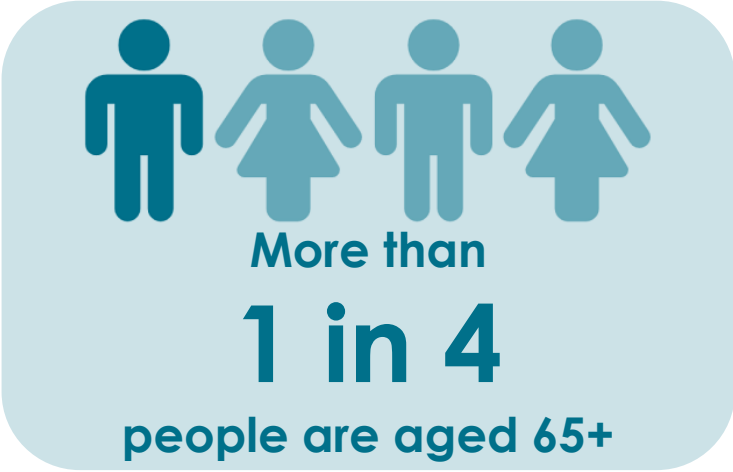


Population

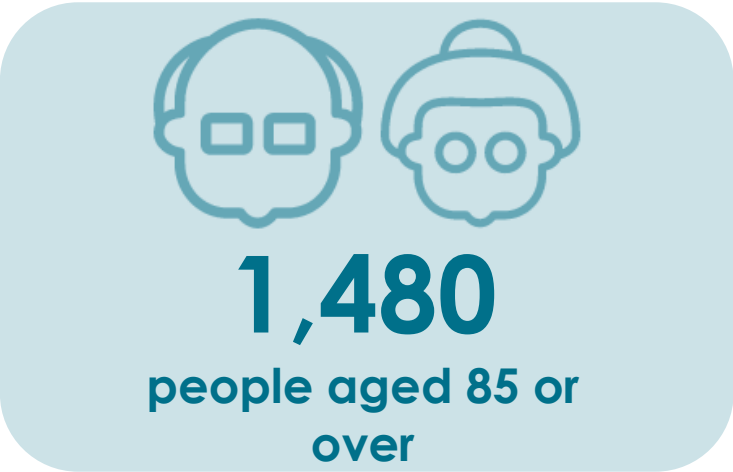
Key facts



15.5%; national average 18.9%



29.2%; national average 18.7%



4.3% of total population; national
average 2.5%

Population

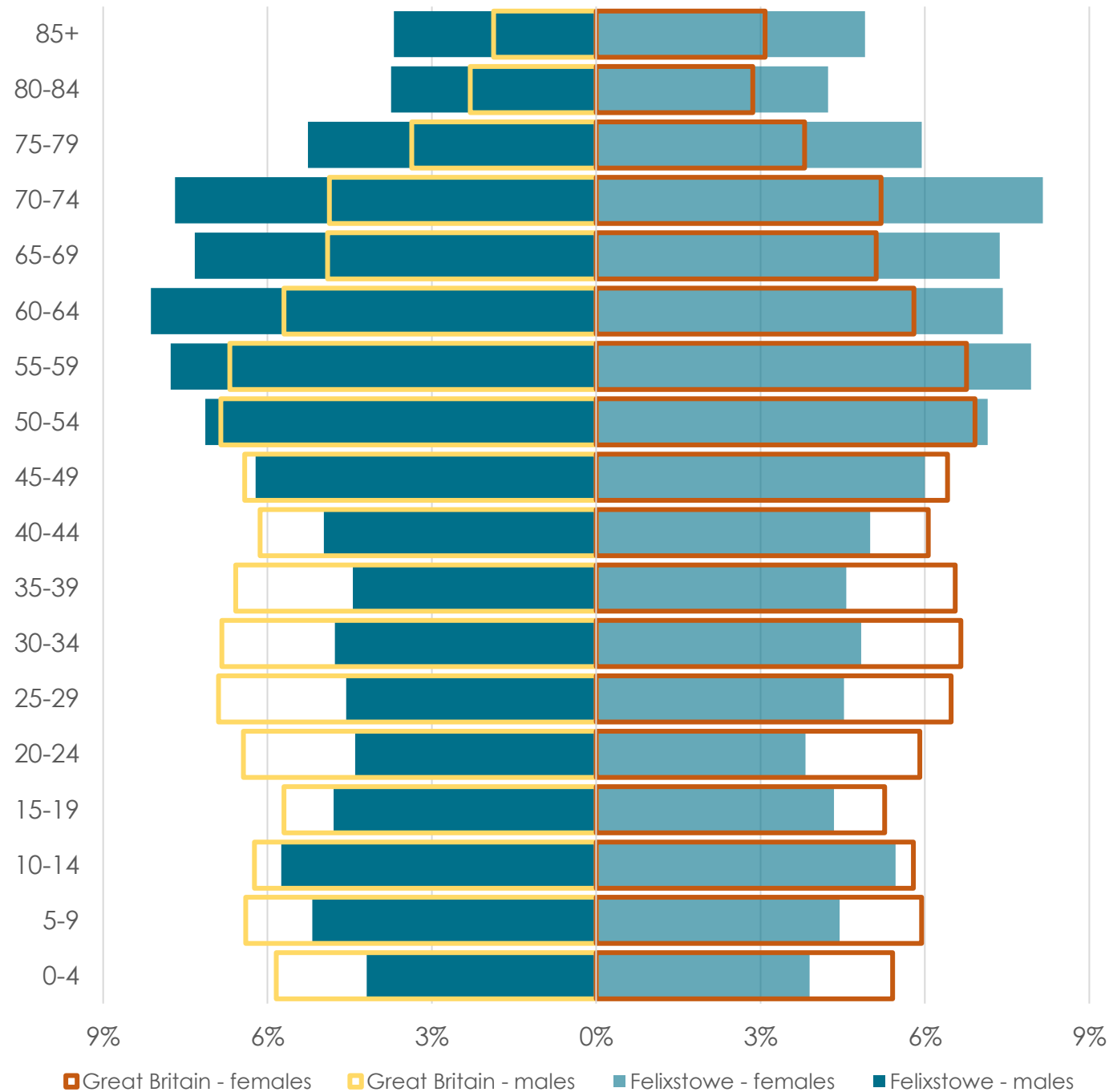
Age breakdown

The age pyramid shows the age breakdown of the population of Felixstowe Pensinula against the national average

Most over-represented age group: **85+**

Most under-represented age group: **20-24**

All groups below the age of 50 account for a smaller proportion of the Felixstowe Pensinula population than they do across Great Britain as a whole



Source: ONS 2020 mid-year population estimates

Deprivation

Key facts



3,410

people affected by
income deprivation

9.9%

Suffolk average 10.0%



9.5%

of working age
people affected by
employment
deprivation

Suffolk average 8.3%
1,730 people



720

children affected by
income deprivation

13.6%

Suffolk average 13.6%



1,190

older people affected
by income deprivation

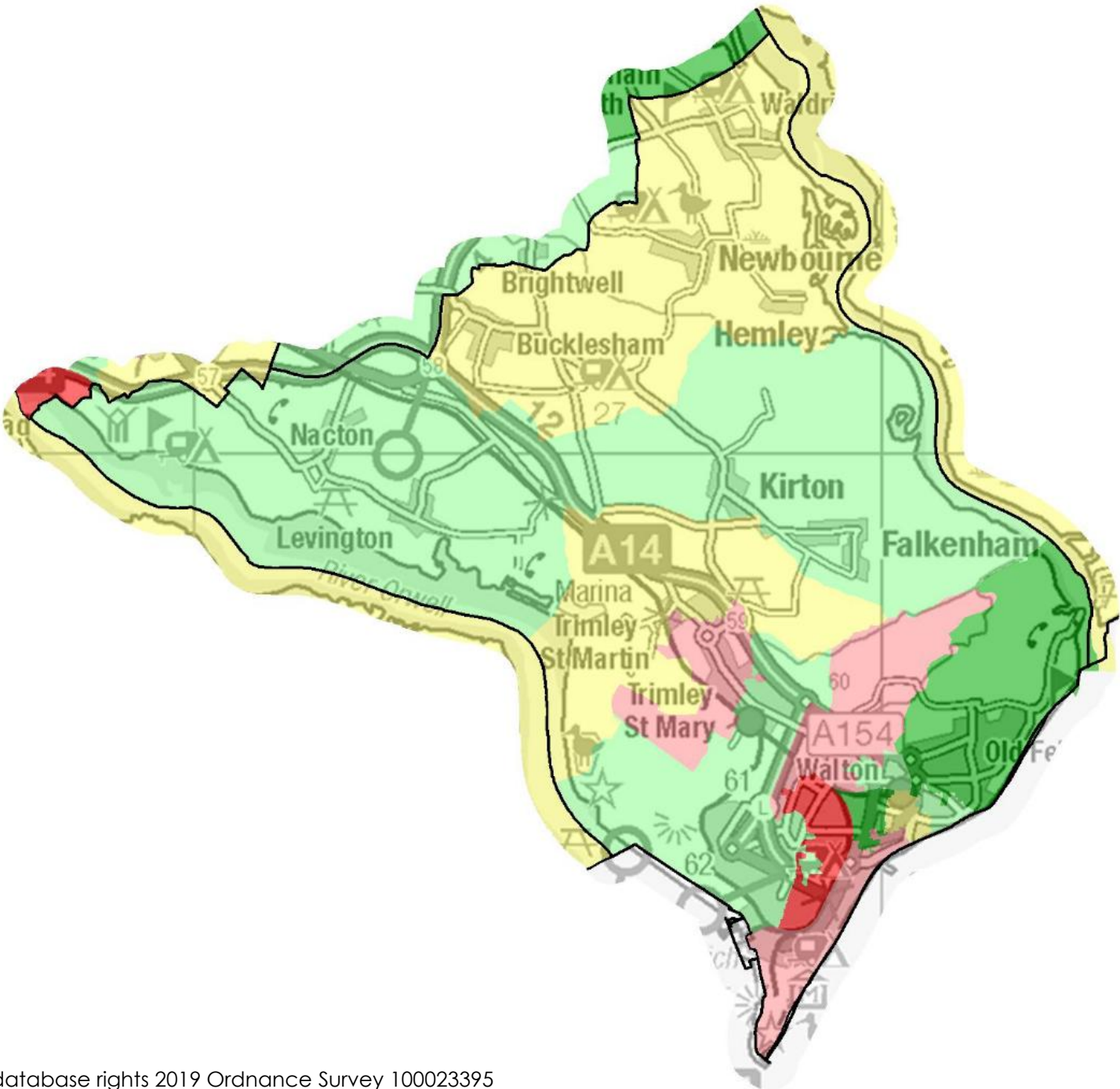
9.4%

Suffolk average 10.4%

Deprivation Overall

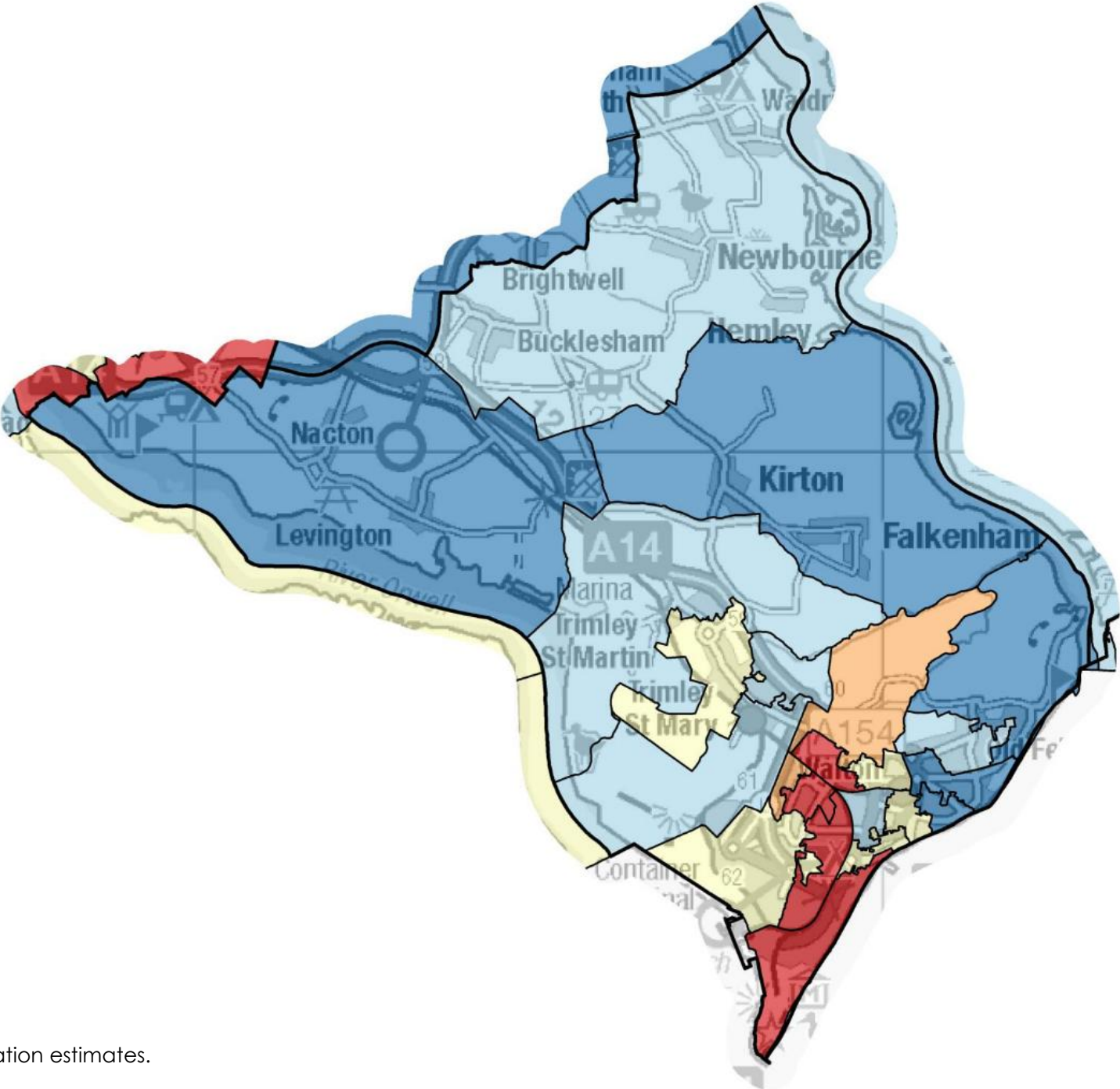
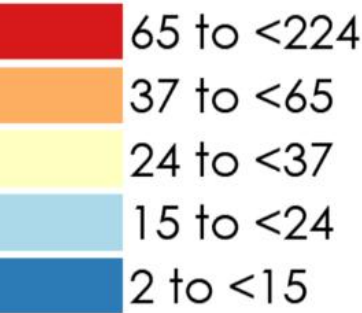
IMD quintile	Population	% of population
1	3,300	10%
2	9,620	28%
3	4,580	13%
4	10,010	29%
5	6,830	20%

1 = most deprived 20% of areas in England
5 = least deprived 20% of areas in England



Deprivation Children

Children aged 0-15 income deprived

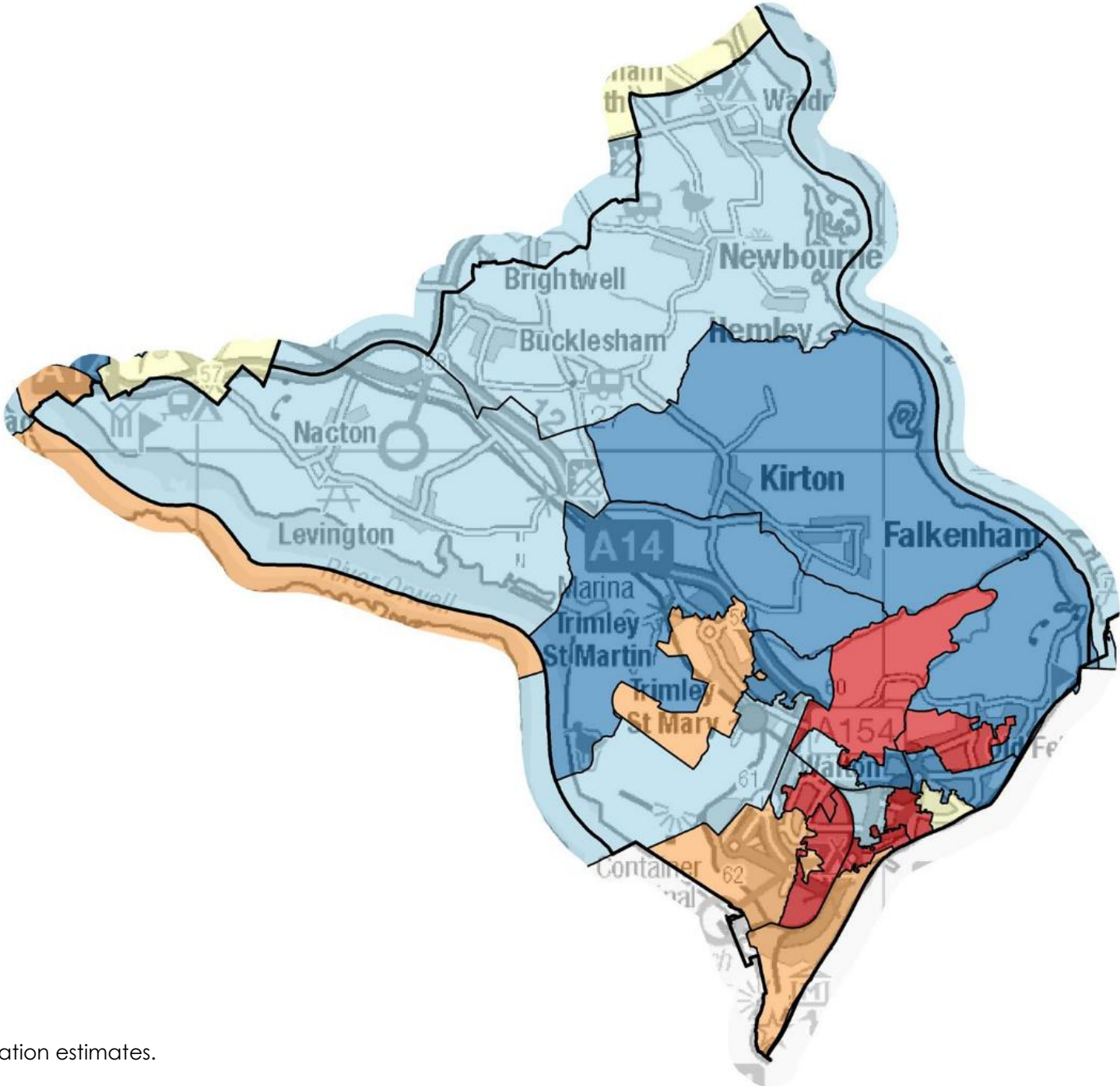
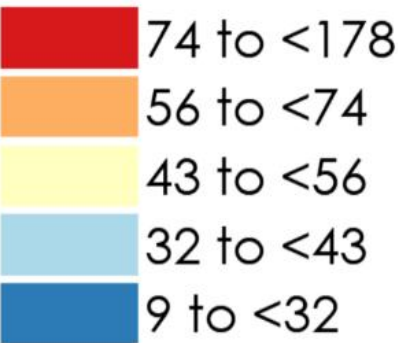


Sources: DCLG Index of Multiple Deprivation 2019 and ONS 2020 mid-year population estimates.
Map © Crown copyright and database rights 2022 Ordnance Survey 100023395

Deprivation

Older people

People aged 60+ income deprived



Sources: DCLG Index of Multiple Deprivation 2019 and ONS 2020 mid-year population estimates.
Map © Crown copyright and database rights 2022 Ordnance Survey 100023395

Health and social care

Life expectancy

Ward/comparator area	Life expectancy at birth for males	Life expectancy at birth for females
Eastern Felixstowe	79.8	82.9
Orwell & Villages	80.7	86.4
Western Felixstowe	79.5	82.9
East Suffolk	80.7	83.9
Suffolk	80.9	84.2

Highest and lowest life expectancy in East Suffolk		
Melton Ward (Woodbridge CP)	85.9	90.5
Harbour & Normanston Ward (Lowestoft CP)	75.1	80.5



1.2 years

the gap in life expectancy for males between Western Felixstowe and Orwell & Villages Wards



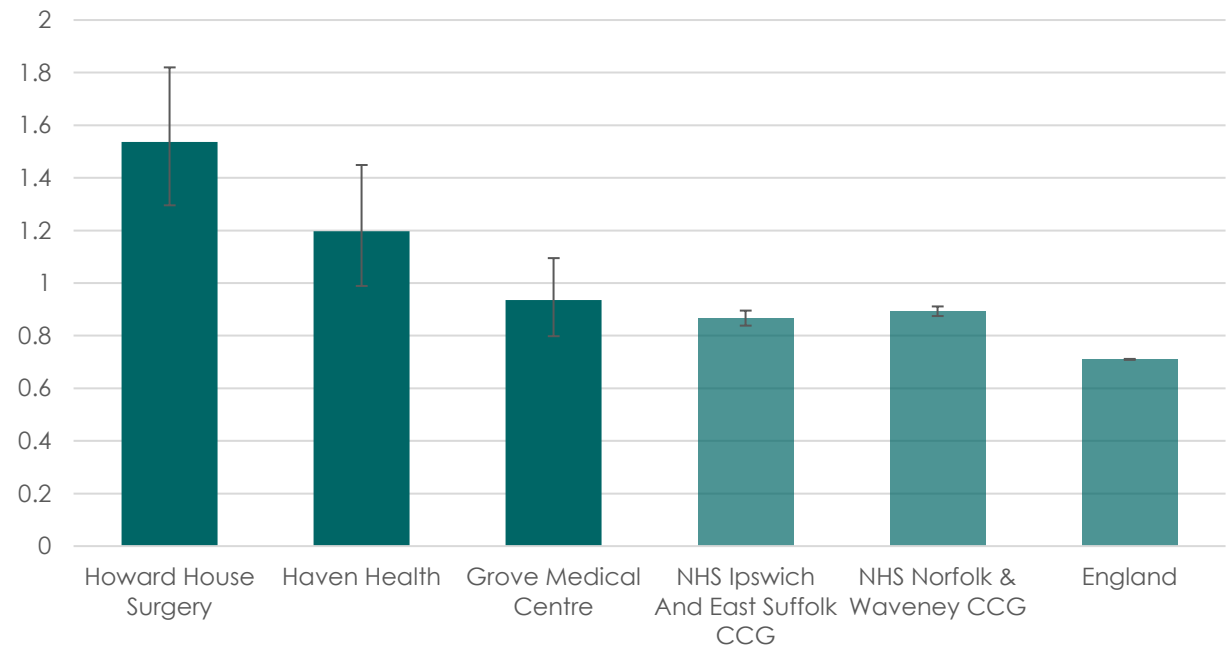
3.5 years

the gap in life expectancy for females between Eastern and Western Felixstowe and Orwell & Villages Wards

Health and social care

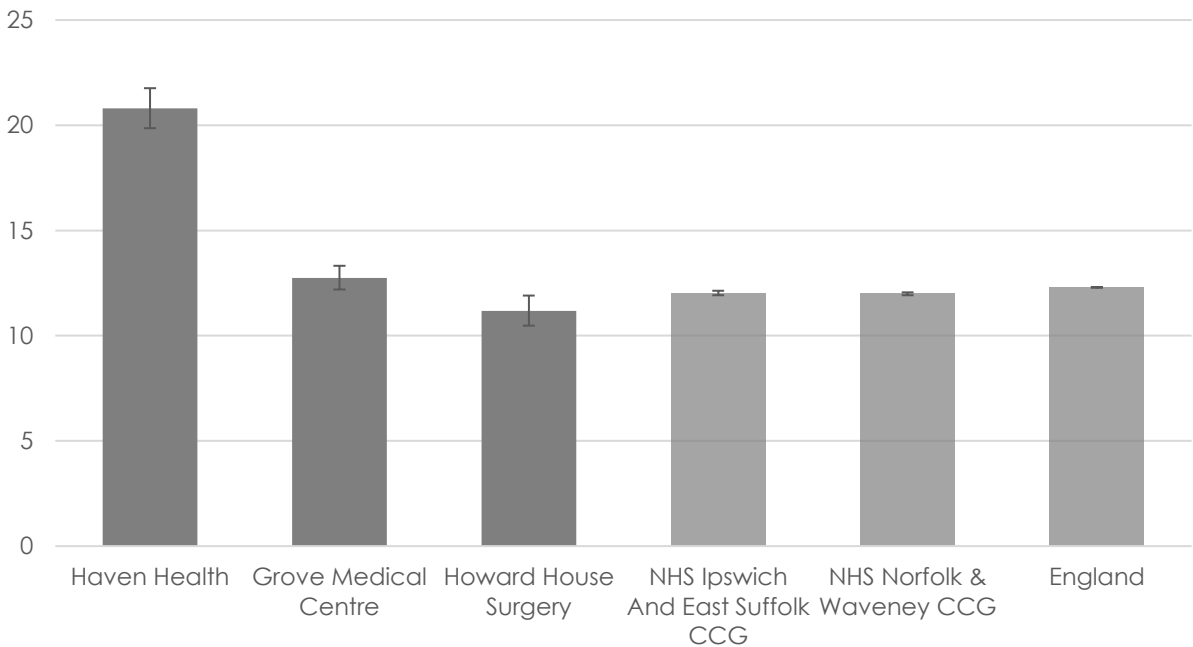
Mental health

Dementia: QOF prevalance (all ages)



Prevalence of dementia is higher than the national average among patients at Grove Medical Centre, Howard House Surgery and Haven Health

Depression: recorded prevalence (aged 18+)



Prevalence of depression is higher than the national average among patients at Haven Health and Grove Medical Centre

Source: Quality and Outcomes Framework (QOF). Accessed via fingertips.phe.org.uk

Error bars show Upper and Lower confidence limits. These are 95% confidence limits, meaning that there is a 95% probability that the true value lies within the two confidence limits.

Health and social care

Mental health

Depression

Lower Similar Higher Not compared

Quintiles: Low High Not applicable

Indicator	Period		England	Felixstowe ESCP GPs	D83015 - Howard House Surgery	D83081 - Haven Health	D83048 - Grove Medical Centre
Depression							
Depression: Recorded prevalence (aged 18+)	2020/21		12.3	14.3*	11.2	20.8	12.7
Depression: QOF incidence (18+) - new diagnosis	2020/21		1.4	1.5*	0.8	1.6	1.8
Personalised Care Adjustment (PCA) rate for depression indicator	2020/21		21.0	20.9*	45.0	18.3	16.2
DEP003 - Newly diagnosed patients with depression who had a review 10-56 days after diagnosis (denominator incl. PCAs)	2020/21		47.2	64.7*	51.7	51.4	73.7

Health and social care

Mental health

Dementia

Lower Similar Higher Not compared

Quintiles: Low High Not applicable

Indicator	Period		England	Felixstowe ESCP GPs	D83015 - Howard House Surgery	D83081 - Haven Health	D83048 - Grove Medical Centre
Dementia							
Dementia: QOF prevalence (all ages)	2020/21		0.7	1.2*	1.5	1.2	0.9
Personalised Care Adjustment (PCA) rate for dementia indicators	2020/21		8.0	14.5*	20.6	5.8	15.1
% reporting Alzheimer's disease or dementia	2021		0.6	0.0*	0.0	0.0	0.0
DEM004 - Dementia care plan has been reviewed last 12mths (denominator incl. PCAs)	2020/21		39.7	64.1*	71.8	28.8	81.6
DEM005 - Blood tests recorded (den.incl.exc.) - retired after 2018/19	2018/19		70.0	85.2*	83.3	69.2	92.7

Health and social care

Mental health

Other indicators

Lower Similar Higher Not compared

Quintiles: Low High Not applicable

Indicator	Period	England	Felixstowe ESCP GPs	D83015 - Howard House Surgery	D83081 - Haven Health	D83048 - Grove Medical Centre
Other Mental Health disorders						
Mental Health: QOF prevalence (all ages)	2020/21	0.95	1.04*	1.08	1.22	0.92
Personalised Care Adjustment (PCA) rate for MH indicators	2020/21	6.5	11.7*	21.5	3.1	14.1
% reporting a long-term mental health problem	2021	11.0	10.8*	8.7	16.0	9.3
MH002 - Patients with severe mental health issues having a comprehensive care plan (denominator incl. PCAs)	2020/21	43.1	74.8*	59.3	85.4	73.7
MH003 - Record of blood pressure check in preceding 12 months for patients on the MH register (denominator incl. PCAs)	2020/21	55.4	83.1*	78.0	87.5	81.8
MH006 - Record of BMI in the last 12 months for patients on the MH register (denominator incl. PCAs)	2020/21	54.4	85.0*	88.1	88.5	79.8

Health and social care

Mental health

Other indicators

Lower Similar Higher Not compared

Quintiles: Low High Not applicable

Indicator	Period		England	Felixstowe ESCP GPs	D83015 - Howard House Surgery	D83081 - Haven Health	D83048 - Grove Medical Centre
Other Mental Health disorders							
MH007 - Record of alcohol consumption for patients on the MH register (last 12 mnths), den. incl. exc. - retired after 2018/19	2018/19		81.1	87.7*	78.9	95.7	83.3
MH008 - Female patients (25-64 yrs) on the MH register who had cervical screening test in preceding 5 years (den. incl. exc.) - retired after 2018/19	2018/19		70.5	71.4*	70.0	60.9	80.0
MH009 - Patients on lithium therapy with record of serum creatinine and TSH in the preceding 9 months (den.incl.exc.) - retired after 2018/19	2018/19		94.5	100*	100	100	100
MH010 - Patients on lithium therapy with levels in therapeutic range in preceding 4 months (den.incl.exc.) - retired after 2018/19	2018/19		82.8	91.7*	75.0	100	95.2

Health and social care

Childhood weight

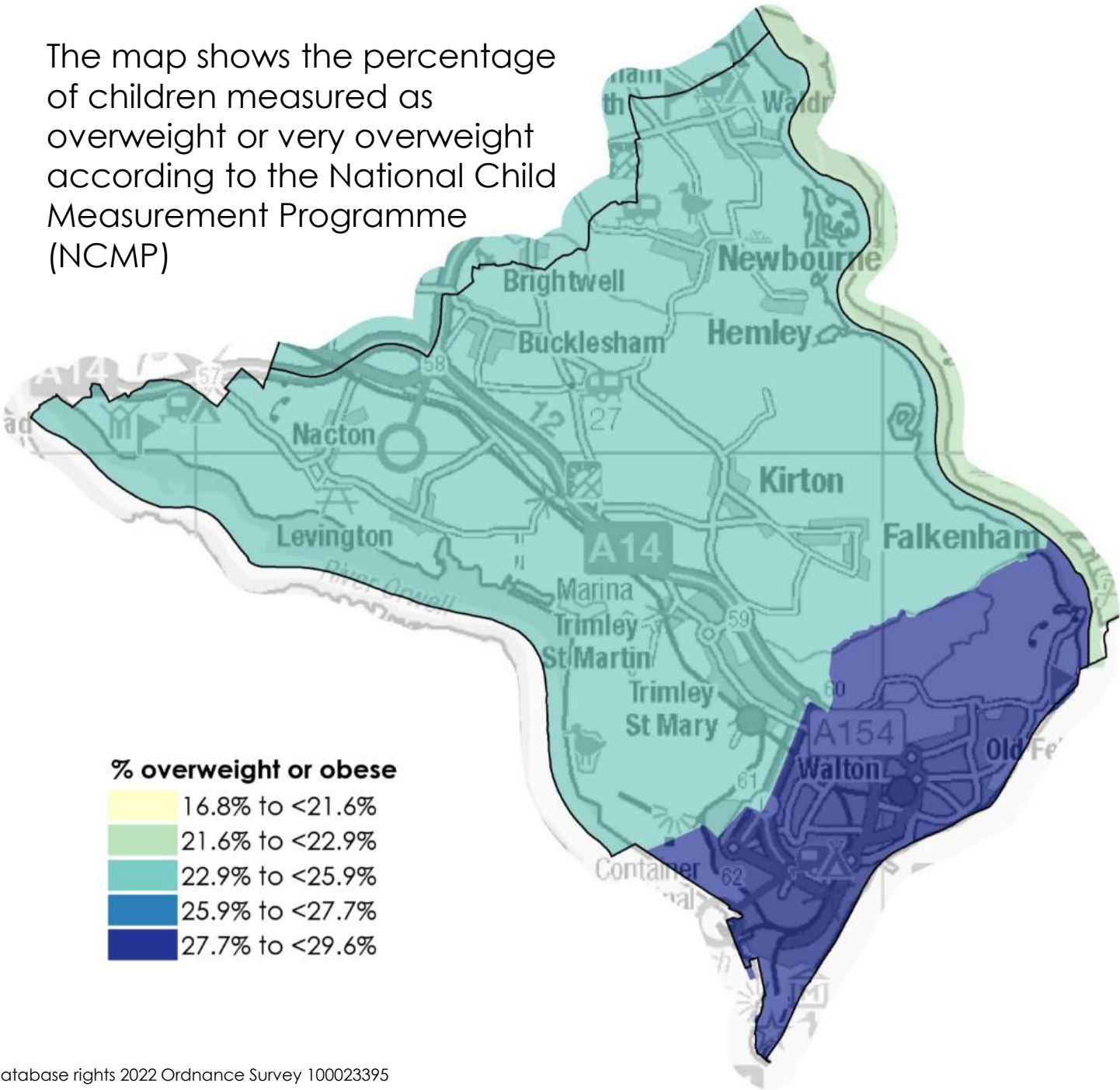


Primary school children
overweight or obese

Lowest CP: Southwold & Kessingland
20.1%

Highest CP: Felixstowe 27.9%

The map shows the percentage of children measured as overweight or very overweight according to the National Child Measurement Programme (NCMP)



Health and social care

Physical activity



38.9%

of adults complete 2+ hours of
exercise per week

Lowest CP: Lowestoft 37.3%
Highest CP: Kesgrave & Martlesham 43.9%
UK average: 39.1%



29.7%

of adults do not exercise

Lowest CP: Kesgrave & Martlesham 22.1%
Highest CP: Lowestoft 32.0%
UK average: 29.5%

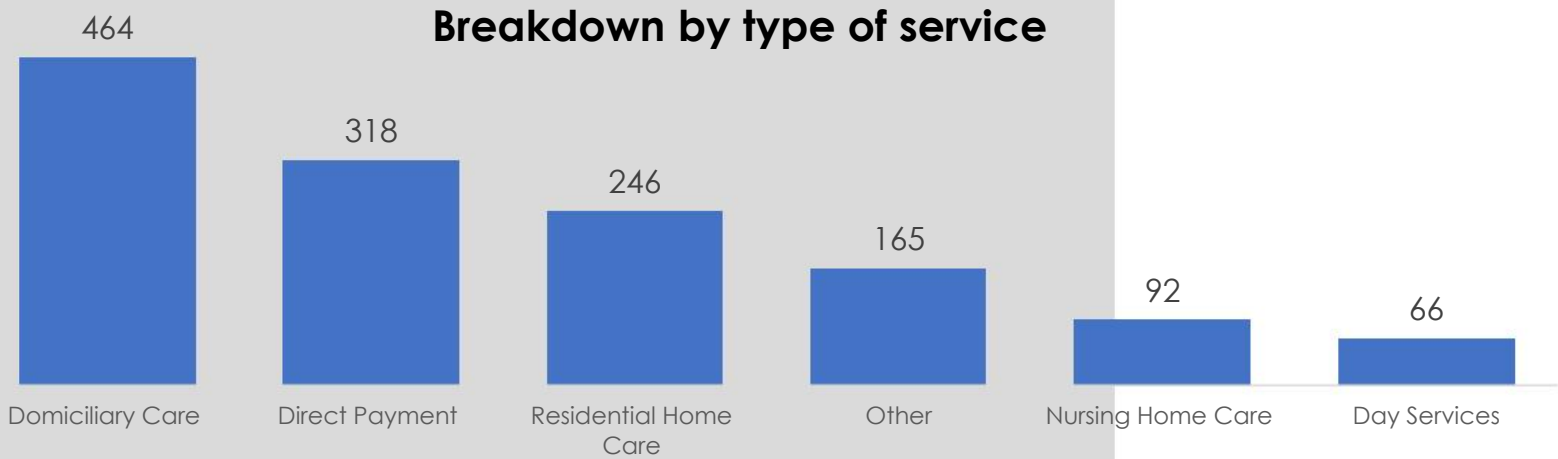
Health and social care

Adult care

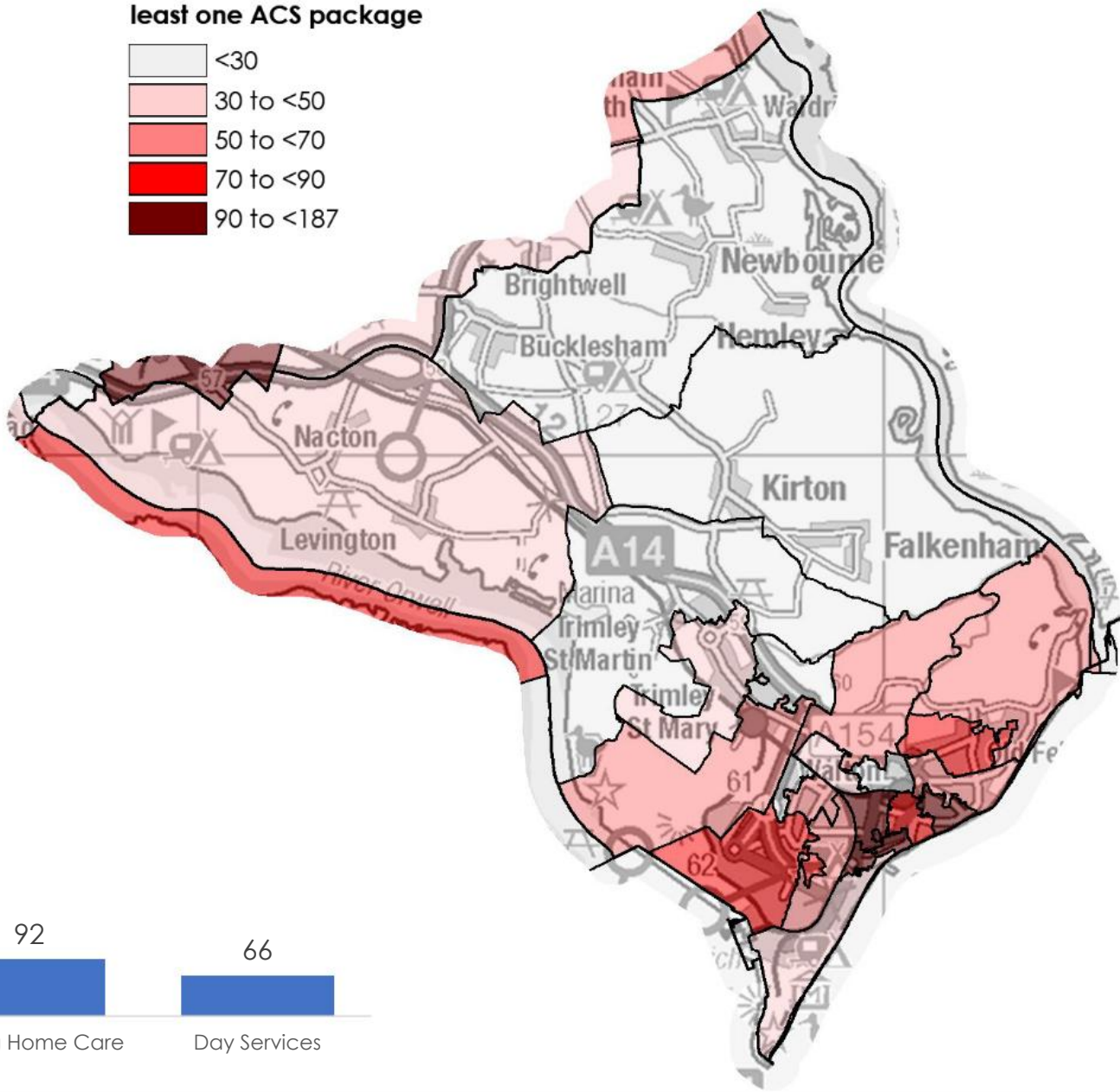
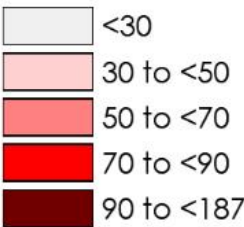


1,140
Adults received a
social care service
in the last two years

Breakdown by type of service



Adults receiving at least one ACS package



Source: Suffolk County Council ACS. Two years data to July 2019

Health and social care

Children's care



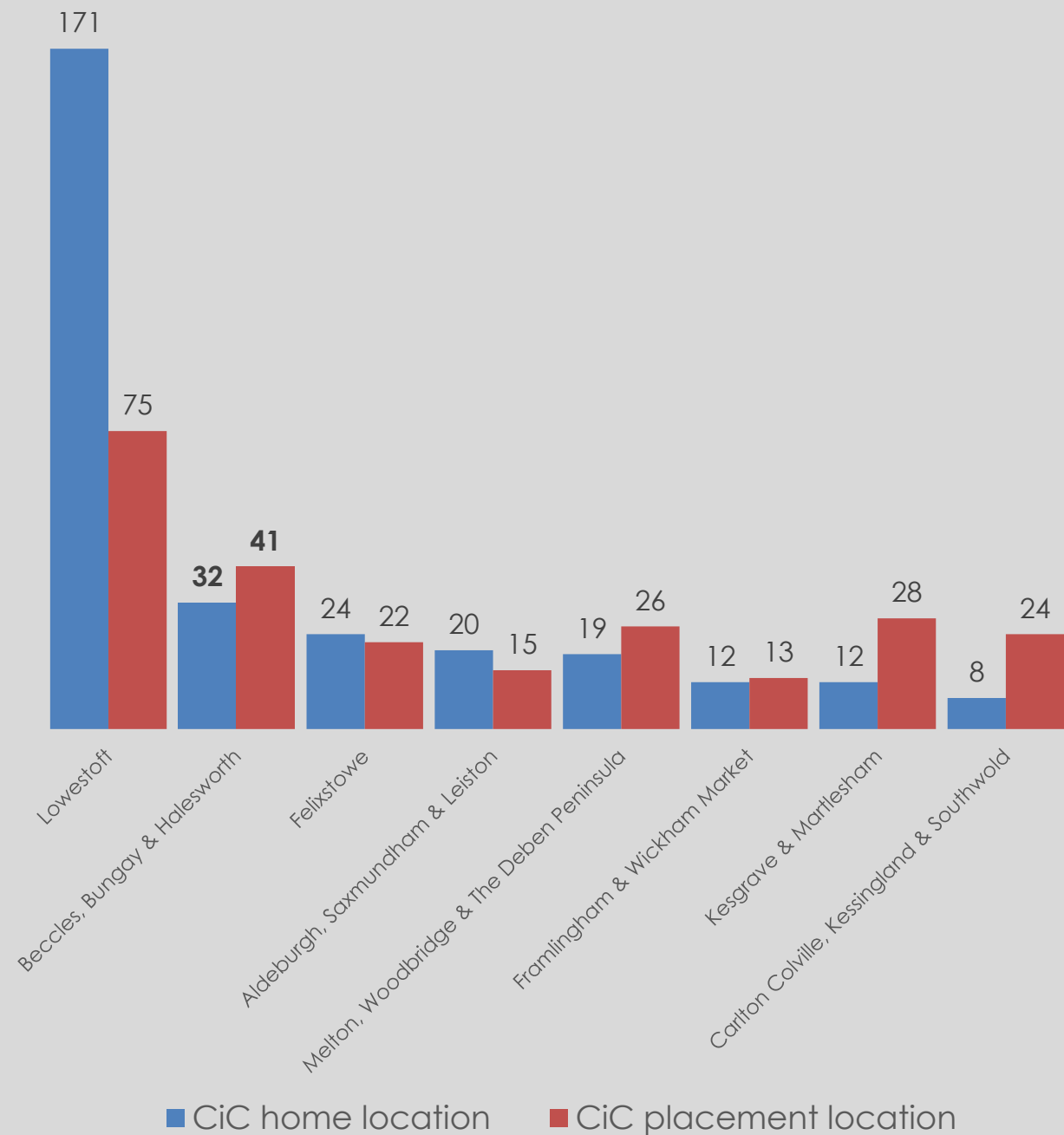
24

Children in Care
whose home is in
the CP



22

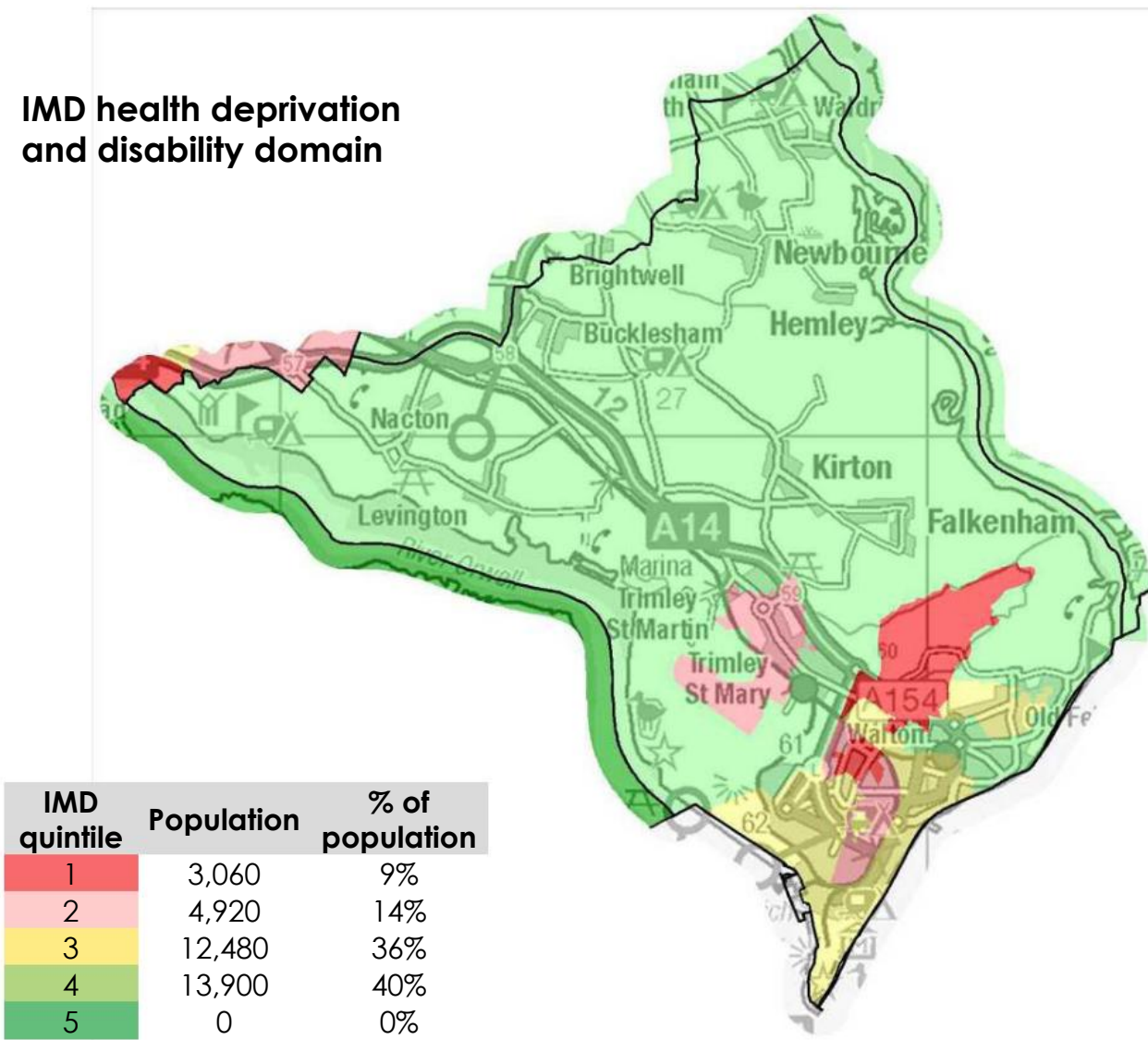
Children in Care
placements
in the CP



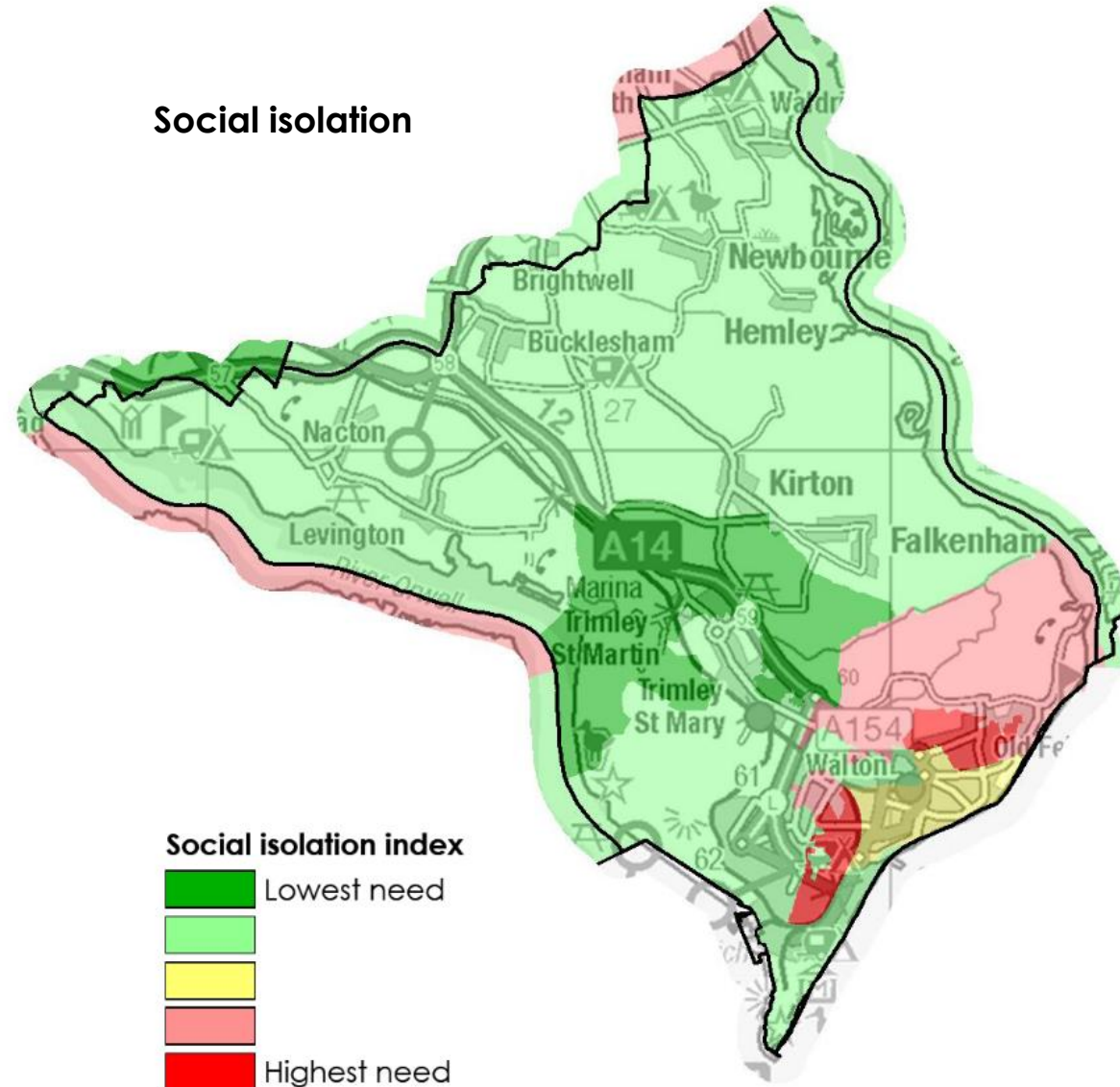
Health and social care

Disability and social isolation

IMD health deprivation
and disability domain



Social isolation



Source: DCLG Index of Multiple Deprivation 2019. Map © Crown copyright and database rights 2019 Ordnance Survey 100023395

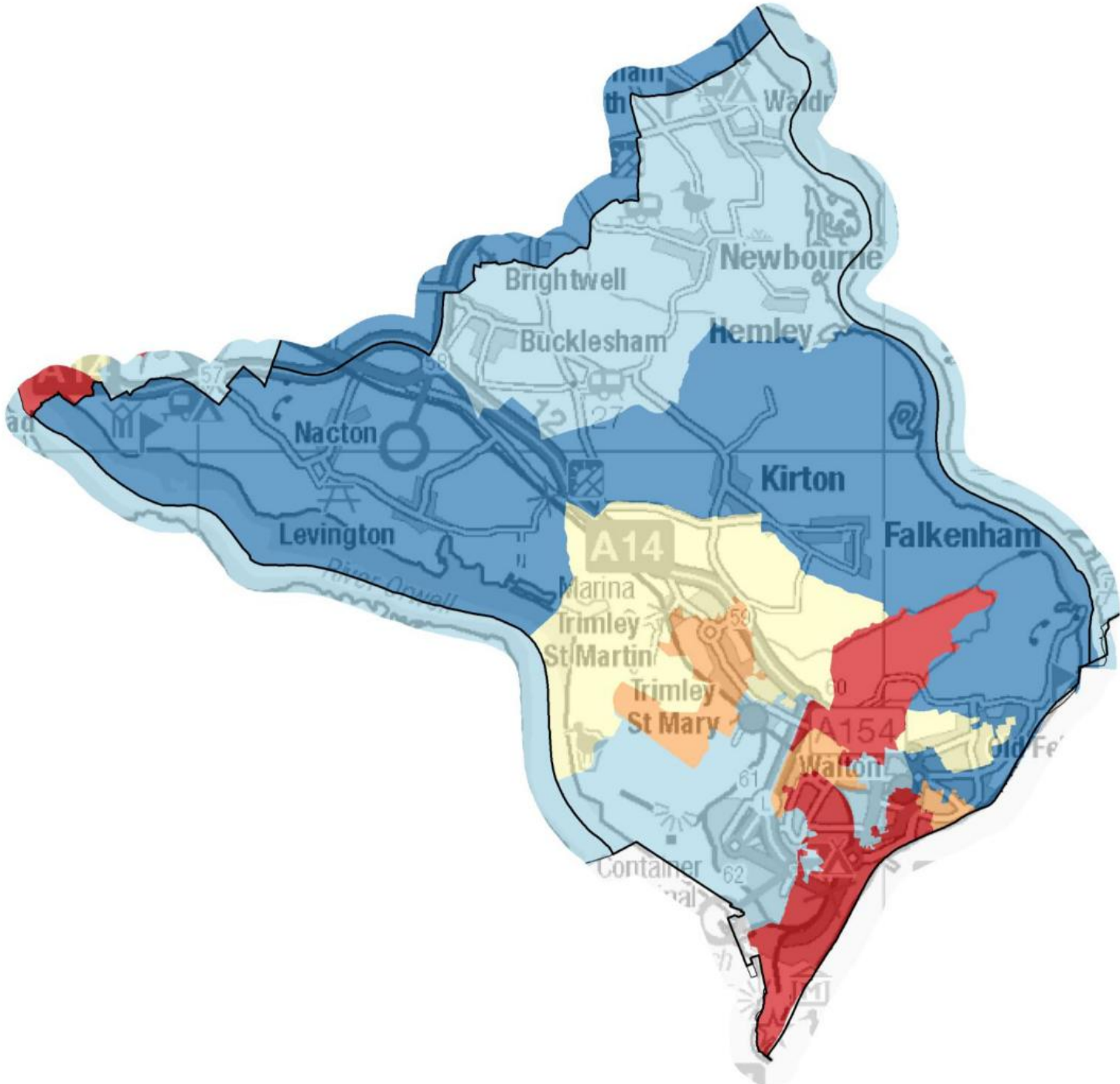
Health and social care

Loneliness

Age UK loneliness research

Legend

- Highest levels of loneliness (top 20%)
- Mid 20%
- Lowest levels of loneliness (bottom 20%)



Employment and education

Employment

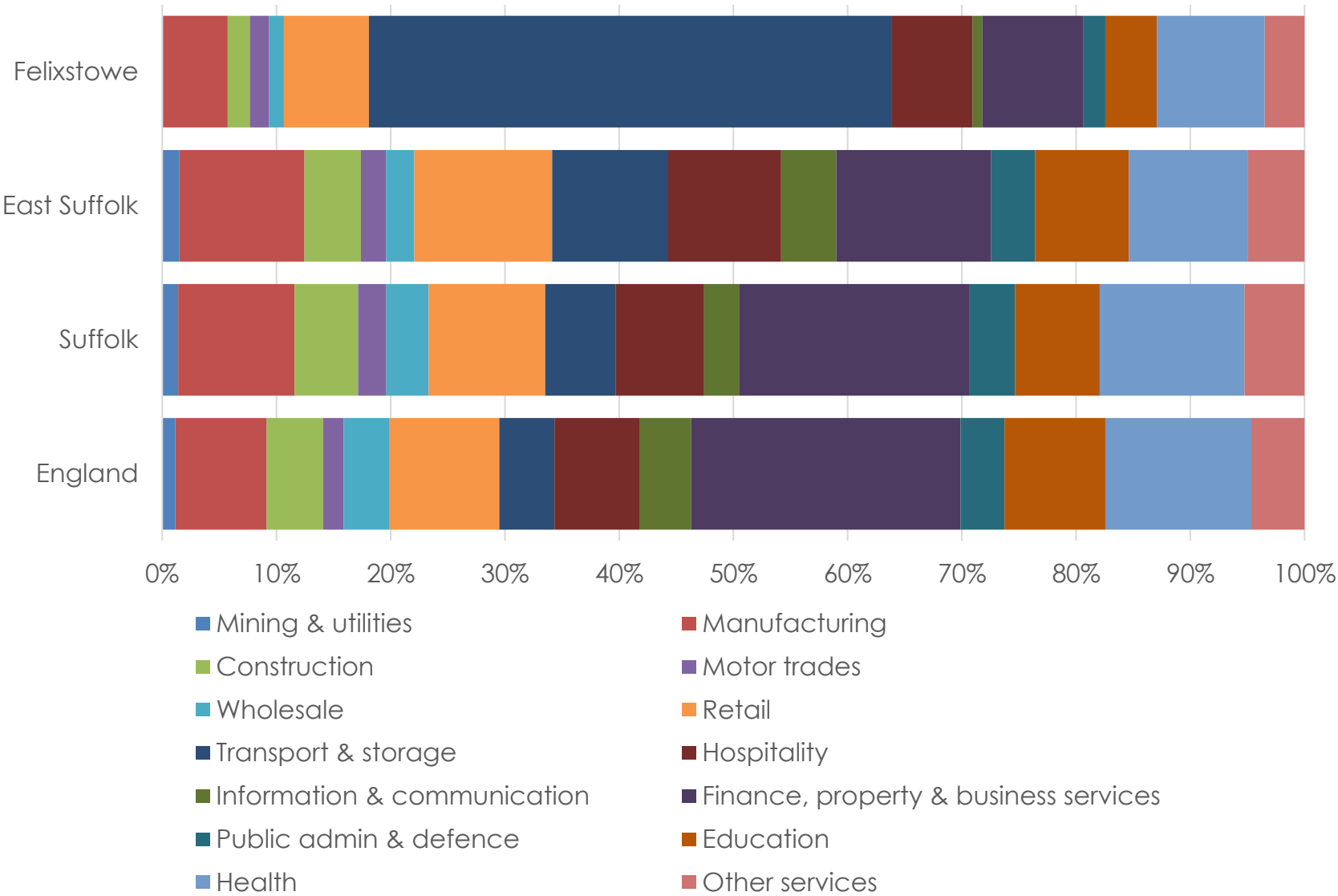


Transport & storage

accounts for almost

1 in 2

jobs in Felixstowe 1 in 17
across Suffolk and 1 in 20
in England



Employment and education

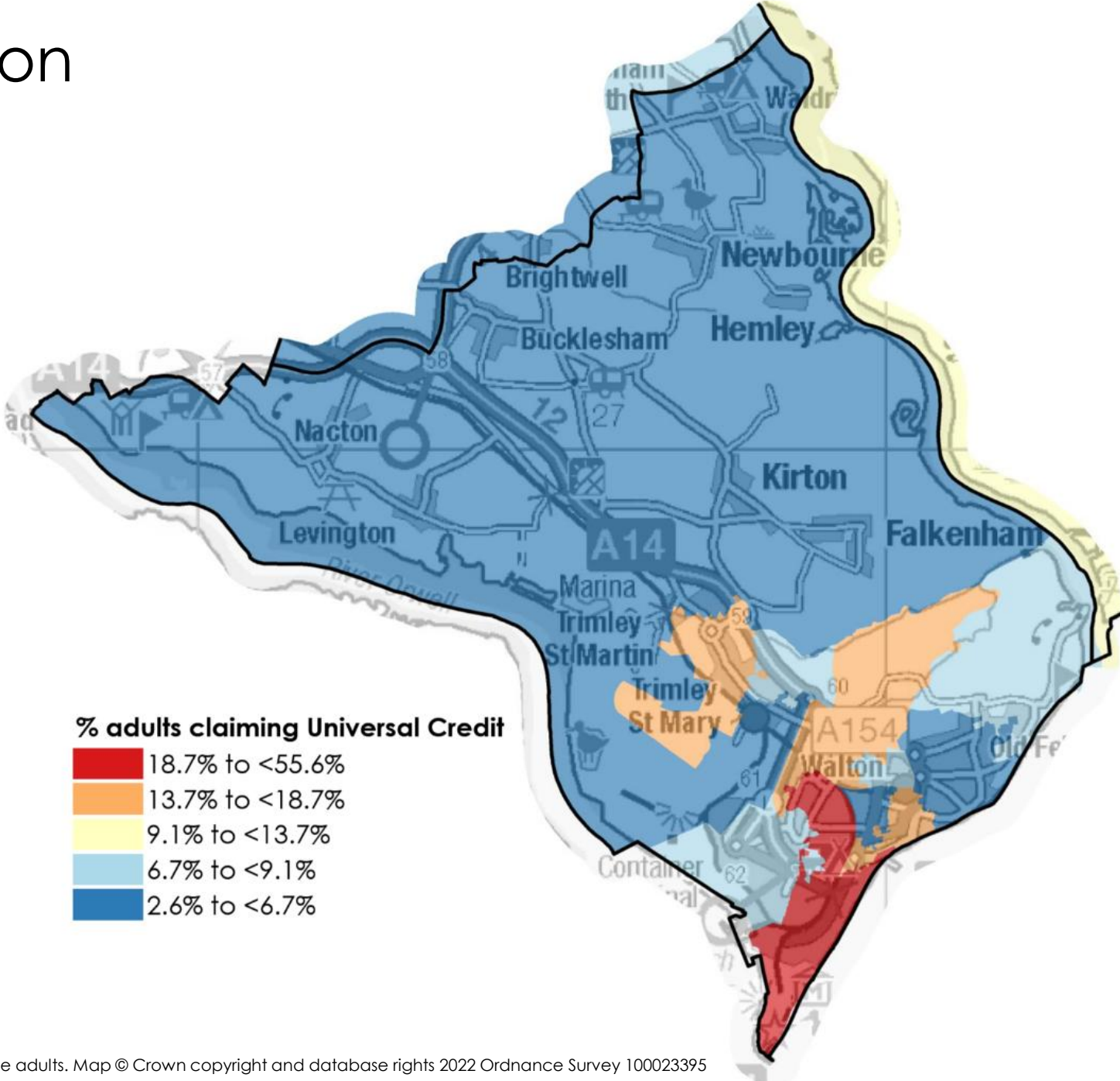
Benefit claimants



10.7%
of adults in receipt of
Universal Credit

Highest CP: Lowestoft 23.8%

Lowest CP: Kesgrave
& Martlesham 6.3%



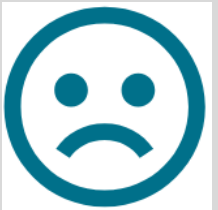
Employment and education

Education – Key Stage 2

Ofsted breakdown



9
Outstanding or Good

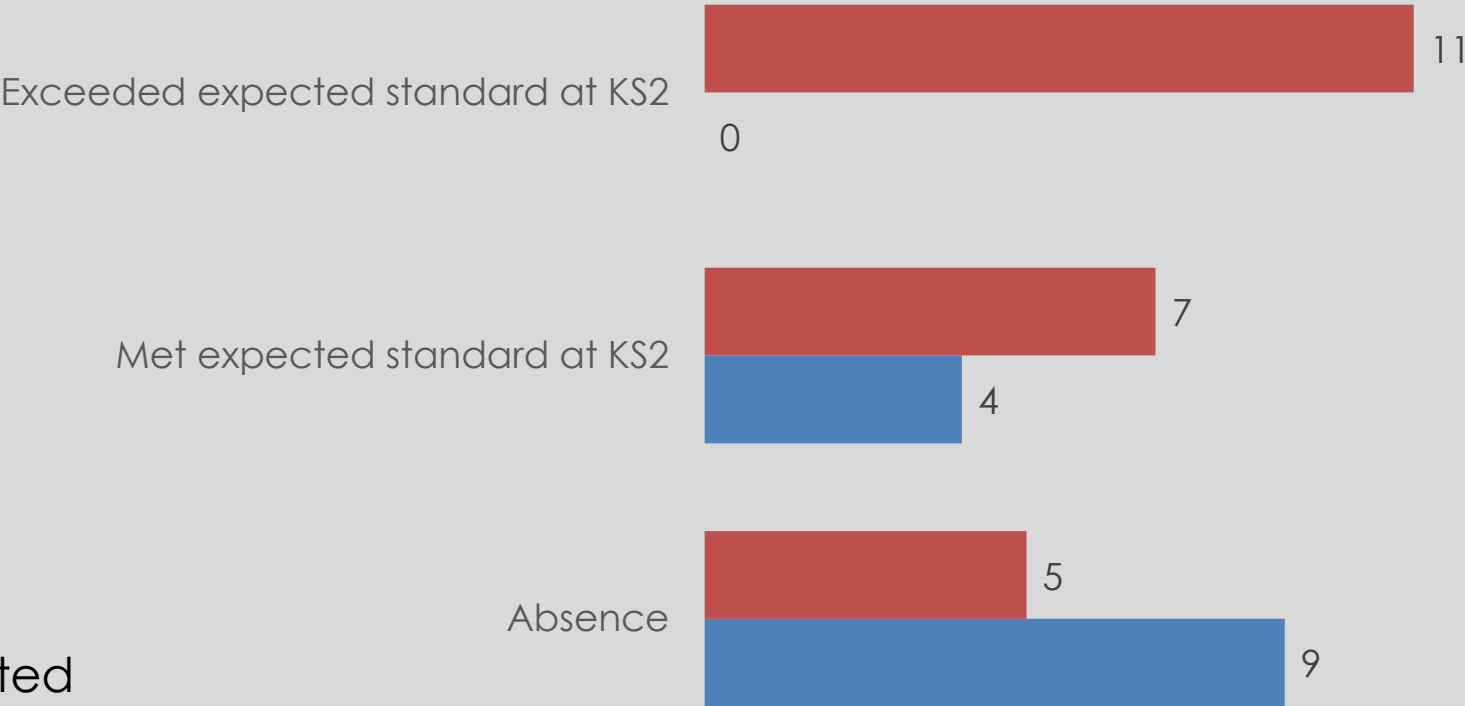


1
Require improvement
or Inadequate

1 Primary school has not yet been inspected

Number of Felixstowe Peninsula schools where the % of KS2 pupils...

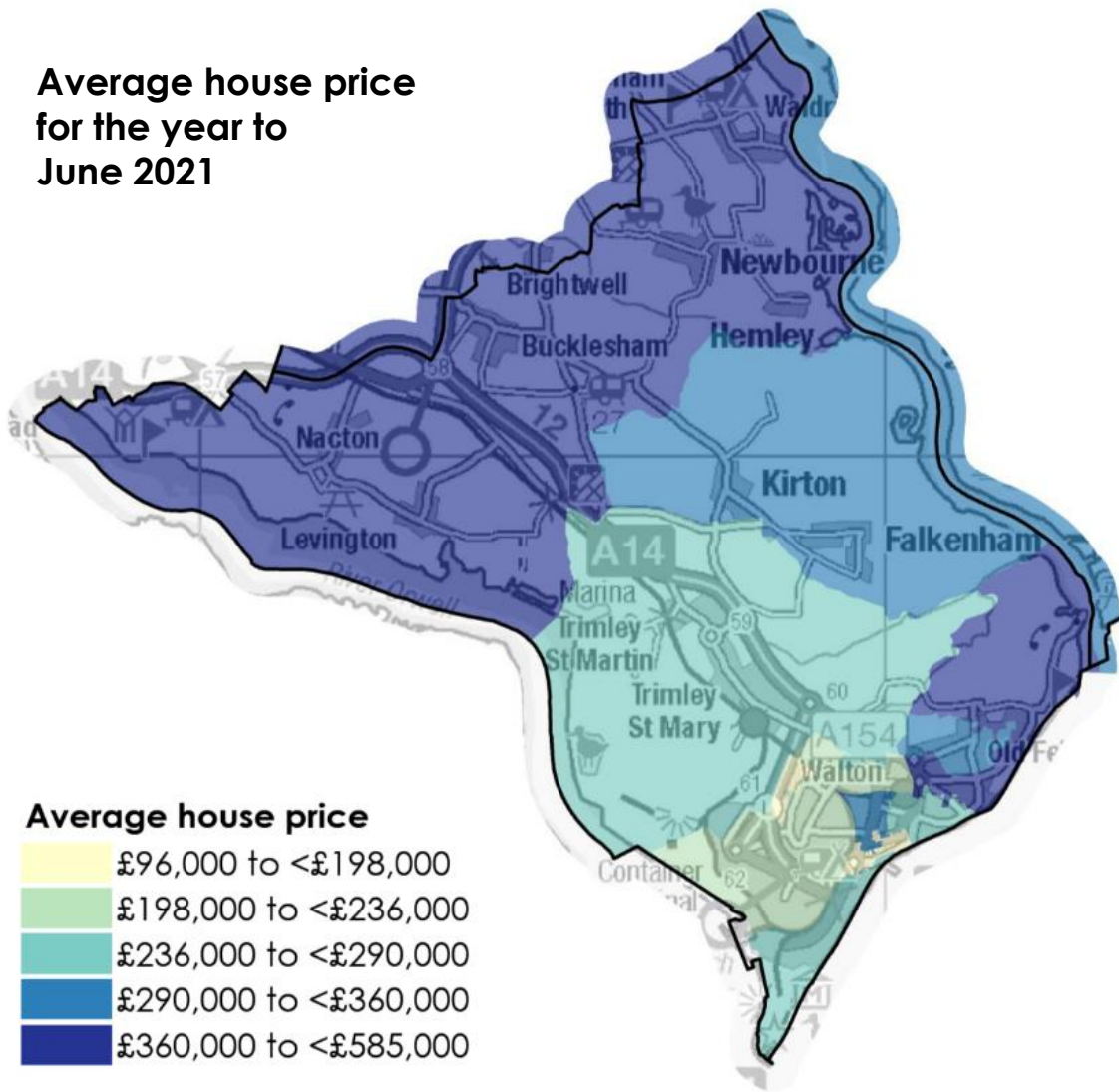
■ Worse than England average ■ Better than England average



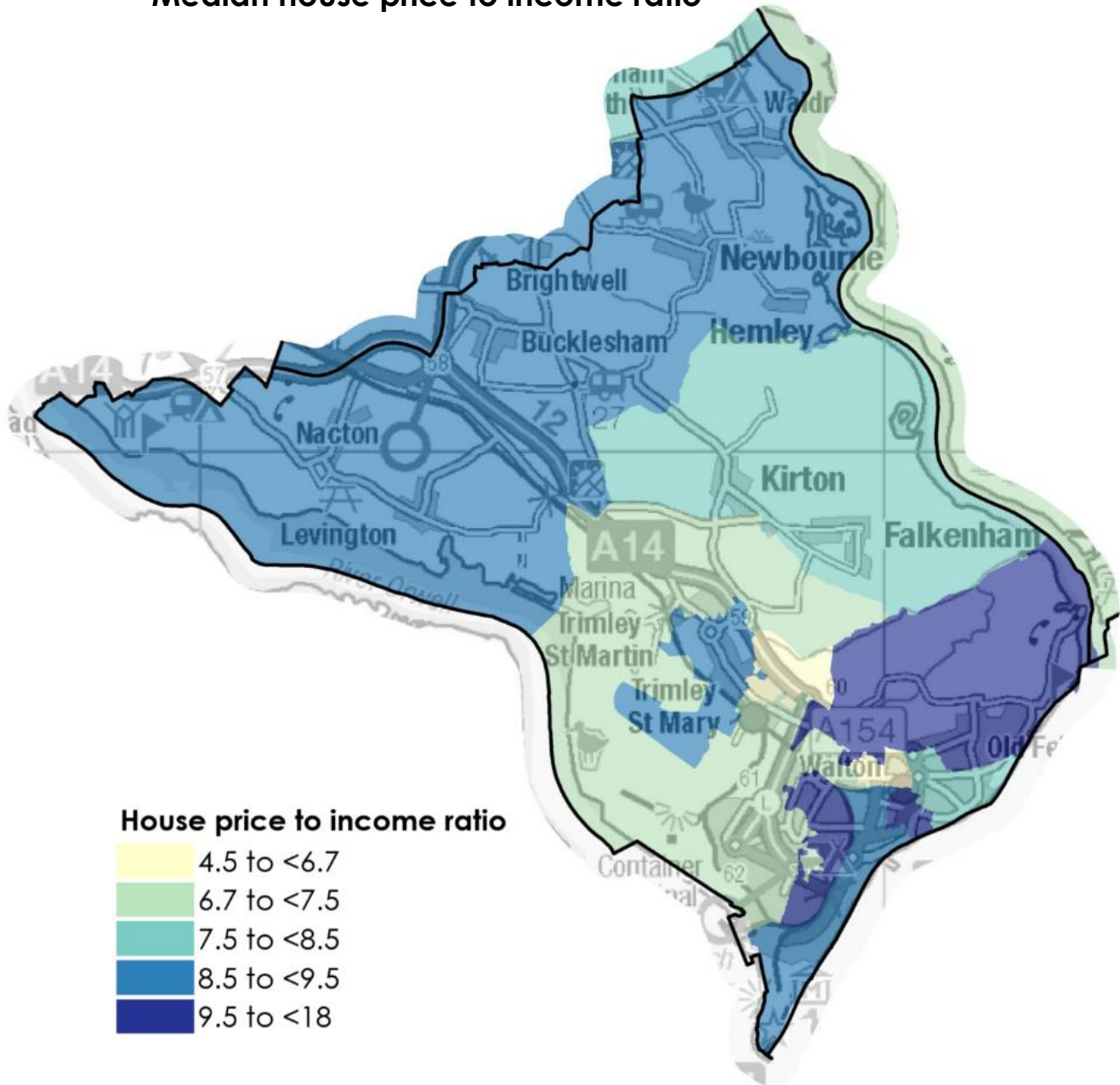
Housing

Prices and affordability

Average house price
for the year to
June 2021



Median house price to income ratio



Housing Living environment



2,830
houses in poor condition;
18.3% of all houses, the
lowest proportion of any CP

Highest CP: Framlingham &
Wickham Market 44.0%



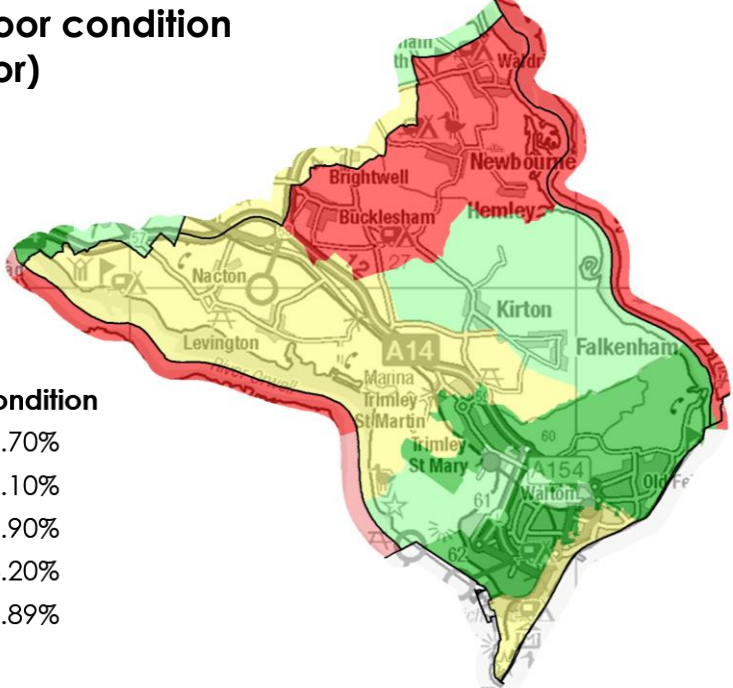
520
hard to heat homes;
3.3% of all houses

Lowest CP: Kesgrave & Martlesham 1.4%
Highest CP: Lowestoft 3.7%

Housing in poor condition (IMD indicator)

Housing in poor condition

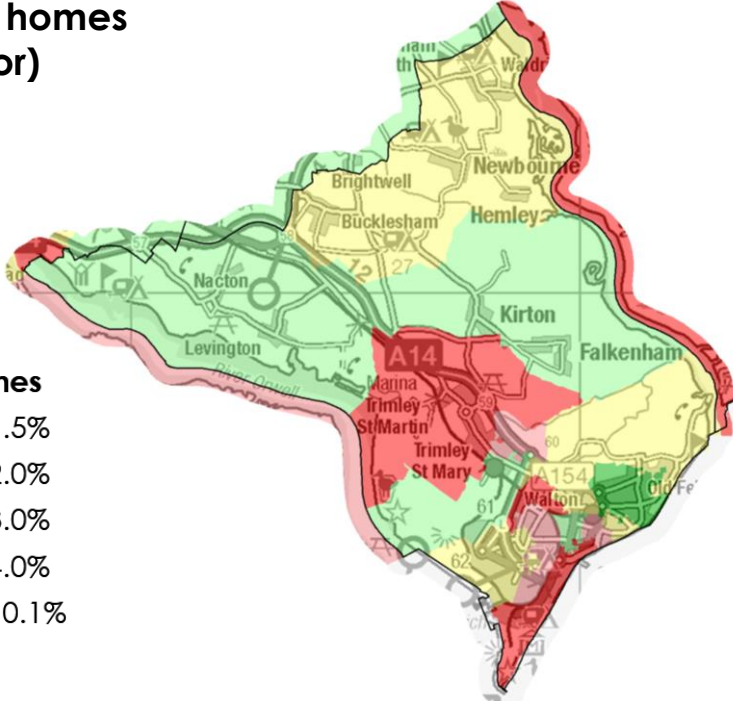
- 0.68% to <1.70%
- 1.70% to <2.10%
- 2.10% to <2.90%
- 2.90% to <4.20%
- 4.20% to <7.89%



Hard to heat homes (IMD indicator)

Hard to heat homes

- 0.4% to <1.5%
- 1.5% to <2.0%
- 2.0% to <3.0%
- 3.0% to <4.0%
- 4.0% to <10.1%



Environment

Air quality and attitudes towards climate change



48.5% pay more for green products (UK 50.7%)



2.6% do not buy something due to too much packaging (UK 2.7%)



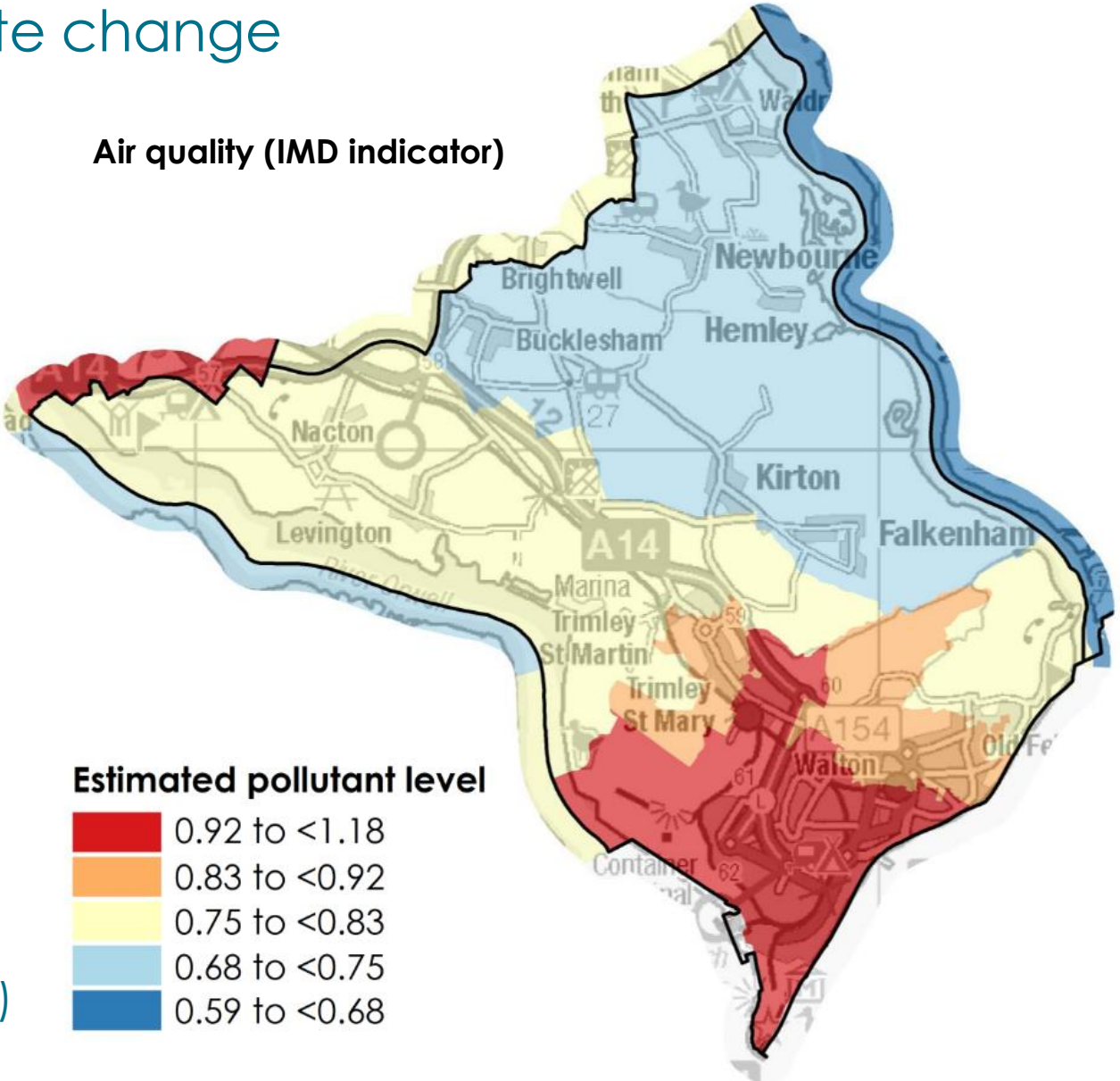
52.8% recycle items rather than throwing away (UK 50.9%)



30.9% make effort to cut down on water usage (UK 29.3%)



45.6% have a reasonable knowledge of climate change (UK 46.2%)



Community/services

Transport



83.4%

of homes are within 1/4 of a mile of a frequent* bus service, the 2nd highest of any CP

Lowest CP: Framlingham & Wickham Market 38.3%
Highest CP: Kesgrave & Martlesham 84.9%

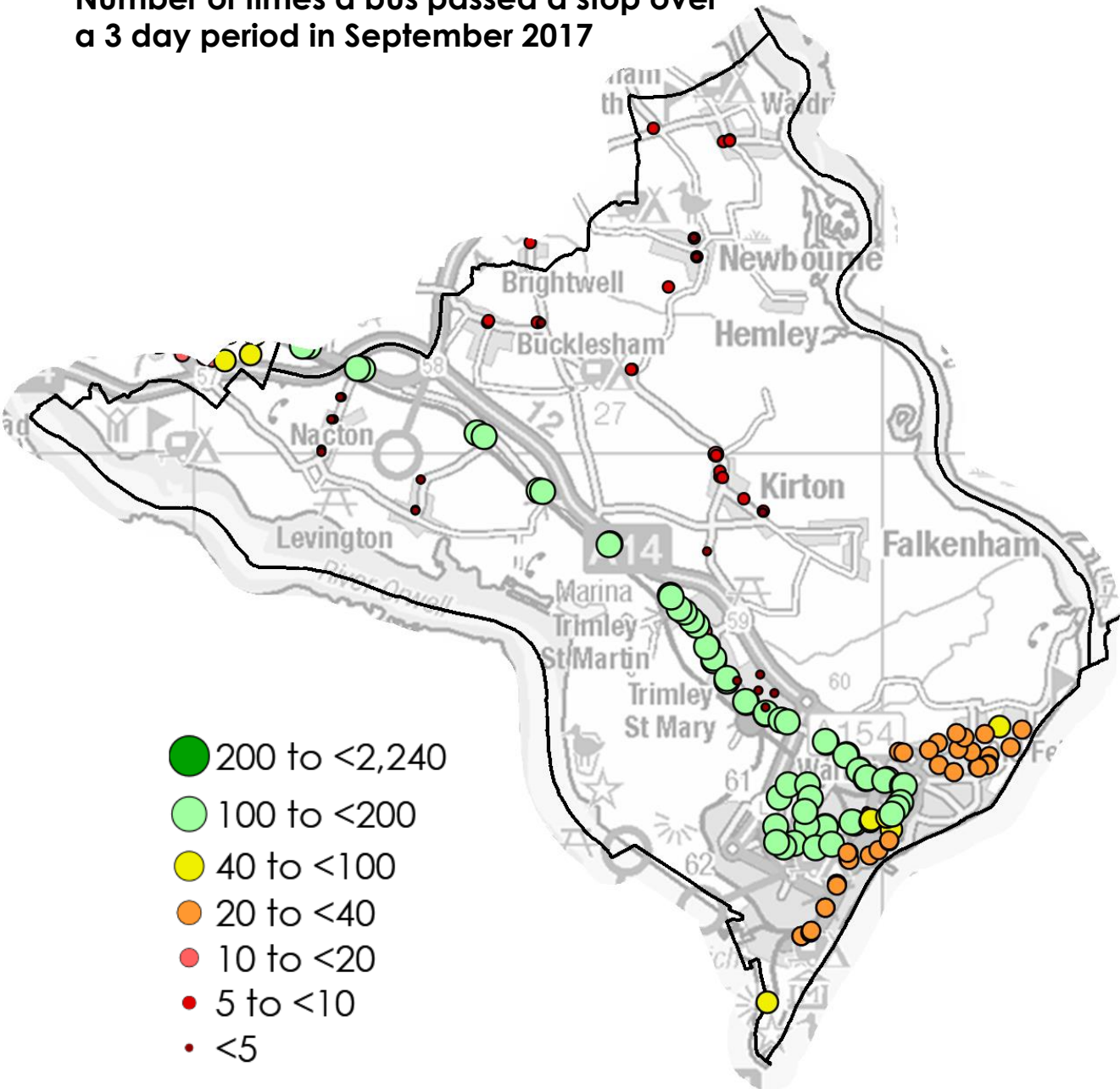


1.0%

of homes are more than 2 miles from a frequent* bus service, the 3rd lowest of any CP

Lowest CP: Kesgrave & Martlesham 0.0%
Next highest CP: Framlingham & Wickham Market: 20.8%

Number of times a bus passed a stop over a 3 day period in September 2017



Source: Bus stop data: Suffolk County Council. Data refers to the number of stops a bus made during a three day period in September 2017. *In this case "frequent" means an average of 5 times per day or more
Map © Crown copyright and database rights 2019 Ordnance Survey 100023395.

Population by Parish

Parish name	Population
Felixstowe	24,560
Trimley St. Mary	3,830
Trimley St. Martin	2,130
Kirton	1,190
Nacton	870
Bucklesham	550
Waldringfield	460
Newbourne + Hemley	320
Levington + Stratton Hall	240
Falkenham	180