



East Suffolk  
Community  
Partnerships  
*Bringing ideas to life*

Kesgrave,  
Rushmere St Andrew,  
Martlesham, Carlford  
& Fynn Valley

## Kesgrave, Rushmere St Andrew, Martlesham, Carlford and Fynn Valley Community Partnership Meeting

Friday, 21 July 2023, 2.00 pm

Deben Conference Room, East Suffolk House, Melton IP12 1RT

### Meeting Goals

1. To receive presentations from Partners
2. To establish priorities for 2023/24

Standing Items		Lead	Supporting papers
1	Welcome from the Chair and networking	Cllr Ed Thompson, Chair of the Community Partnership	None
2	To elect a Vice-Chair for the Community Partnership for 2023/24	Democratic Services Officer	None
3	Action Notes	Democratic Services Officer	Yes
4	Community Partnership Board Update	Luke Bennett (Partnerships Manager)	Yes
Meeting Items		Lead	Supporting papers
5	Annual Review of Community Partnerships Terms of Reference <ul style="list-style-type: none"><li>• Reminder of governance structure</li><li>• How can you help?</li><li>• Partnership intent</li><li>• Structure of meetings</li><li>• Calendar and planning for financial year and expenditure</li><li>• Capacity</li></ul>	Democratic Services Officer / Andy Joliffe (Communities Officer)	Yes
6	Presentations from Community Partners <ul style="list-style-type: none"><li>• To receive presentations from those partners invited to</li></ul>	Representatives of Community Partners	No

	present by the Communities Officer		
<b>7</b>	Priority Review Workshop <ul style="list-style-type: none"> <li>The Community Partnership to use its data pack to identify its priorities for 2022/23</li> </ul>	Andy Jolliffe (Communities Officer)	Yes <ul style="list-style-type: none"> <li>Data Pack</li> <li>Survey response from 600 Farlingaye students</li> </ul>
<b>8</b>	Community Partnership Meeting Hosts  To seek partners to volunteer to host the following meetings of the partnership (2pm start): <ul style="list-style-type: none"> <li>2 October 2023</li> <li>8 January 2024</li> <li>11 March 2024</li> </ul>	All	None

**Chair:** Councillor Ed Thompson (East Suffolk Council)

**Vice-Chair:** To be appointed.

**Communities Officer:** Andy Jolliffe  
[andrew.jolliffe@eastsuffolk.gov.uk](mailto:andrew.jolliffe@eastsuffolk.gov.uk)

**Partnership Organisations:**

East Suffolk Council  
 Suffolk County Council  
 Local Town and Parish Councils  
 Suffolk Constabulary  
 Ipswich and East Suffolk Clinical Commissioning Group  
 Community Action Suffolk  
 Business Community  
 Youth Community  
 Environment

**Filming, Videoing, Photography and Audio Recording at Partnership Meetings**

Members of the partnership may record / film / photograph or broadcast this meeting.

The Council cannot guarantee public seating areas will not be filmed or recorded. By entering the Meeting Room and sitting in the public seating area, those present will be deemed to have consented to the possible use of filmed images and sound recordings. If you do not wish to be recorded, please speak to a member of the Democratic Services team at the earliest opportunity.

If you require this document in large print, audio or Braille or in a different language, please contact the Democratic Services Team on 01502 523521 or email:  
[democraticservices@eastsuffolk.gov.uk](mailto:democraticservices@eastsuffolk.gov.uk)



## **Kesgrave, Rushmere St Andrew, Martlesham, Carlford and Fynn Valley Community Partnership**

### **Action Notes of the Meeting held on Monday 9 January 2023, at Tower Hall, 5 Broadlands Way, Rushmere St Andrew**

#### **Core Membership:**

**ESC Councillors** – Colin Hedgley, (in the Chair), Chris Blundell

**Town and Parish Councils** – Joanna Abbott (Kesgrave Town Council), Eddie Lawrence (Brightwell, Foxhall and Purdis Farm Group Parish Council), James Wright (Rushmere St Andrew Parish Council), John Lapsley (Grundisburgh & Culpho Parish Council), Geoff Caryer (Grundisburgh & Culpho Parish Council), Ian Ransome (Little Bealings Parish Council), Jean Ellinor (Tuddenham St Martin Parish Council), Pete Rafell (Clopton Parish Council)

**Others present** – Ben Bix (BB) (Democratic Services Officer), Andrew Jolliffe (AJ) (ESC Communities Officer), Luke Bennett (LB) (ESC Partnerships Manager), Helen Clarkson-Fieldsend (Bealings School Governor), Nicky Willshire (NW), (CEO of Ipswich Citizens Advice Bureau (CAB))

<b>Item</b>	<b>Discussion</b>
<b>1.</b>	<b>Action Notes</b>  The action notes of the meeting held on 22 October were confirmed as a correct record.
<b>2.</b>	<b>Community Partnership Board Update</b>  Luke Bennett, Partnerships Manager, provided an update on the most recent meeting of the Community Partnership Board, which included: <ul style="list-style-type: none"><li>• The Government's Shared Prosperity Fund had allocated £2.75m to East Suffolk Council over three years to enable the development of community facilities and hubs, including investment and support for digital infrastructure and circular economy projects in local community facilities.</li><li>• The Rural England Prosperity Fund had introduced a 21st century community and business hub grant programme to provide critical upgrades and improvements to community facilities fit for 21st century use. It was open to village halls, churches, community buildings and commercial spaces that were looking to refocus.</li></ul>

	<ul style="list-style-type: none"> <li>The Ease the Squeeze Programme was progressing well – particularly the introduction of Warm Rooms and Warm Spaces.</li> </ul>
<b>3.</b>	<p><b>Ground Rules for Community Partnerships</b></p> <p>The Partnership were reminded of the ground rules for the partnership and noted them accordingly.</p>
<b>4.</b>	<p><b>Cost of Living Update</b></p> <p>AJ updated the meeting on the Council’s partnership work to tackle the cost-of-living crisis through the Ease the Squeeze programme. The update included progress on:</p> <ul style="list-style-type: none"> <li>Warm rooms</li> <li>Food Network Co-ordinator</li> <li>Handy Person Project</li> <li>Comfort food voucher scheme</li> <li>Field to Fork project</li> <li>Uniform Banks</li> </ul>
<b>5.</b>	<p><b>Road Safety</b></p> <p>AJ provided an update on Road Safety, one of the three priorities for the Community Partnership. AJ thanked the volunteers who had participated in Road Safety Week and apprised the partnership of:</p> <ul style="list-style-type: none"> <li>Recent speedwatch events</li> <li>The continued roll-out of hi-vis vests to primary schools</li> <li>Additional cohorts were benefiting from Bikeability funding</li> <li>Speedwatch banners had been placed at 7 sites, visible to an estimated 170,000 vehicle movements</li> <li>There had been media interest in the Road Safety Forum as an exemplar of community engagement.</li> </ul>
<b>6.</b>	<p><b>Community Issues – Youth Voice</b></p> <p>The Chairman advised that the proposed speaker from Suffolk Rural College had sent apologies to the meeting. The Chairman invited Nicky Willshire (NW), CEO of Ipswich Citizens Advice Bureau (CAB) to speak to the partnership:</p> <ul style="list-style-type: none"> <li>The work of the CAB was explained, including the impact of the cost-of-living crisis, which was manifesting in greater mental health challenges</li> </ul>

	<ul style="list-style-type: none"> <li>• The funding provided by ESC for CABs went to those operating in the East Suffolk District</li> <li>• 20% of clients using the Ipswich office came from the East Suffolk District as the Ipswich Office was more convenient than Leiston or Felixstowe</li> </ul> <p>The Chairman thanked NW for attending; and emphasised the additional support that Financial Inclusion Officers at ESC could offer to those presenting to CABs. In acknowledging the discussion around funding, AJ undertook to raise the matter with ESC Officers.</p>
<b>7.</b>	<p><b>Householder Responsibilities</b></p> <p>AJ presented an action from the last meeting to discuss how residents could report local matters to responsible bodies. The partnership discussed householder responsibilities and observed that:</p> <ul style="list-style-type: none"> <li>• Responsibility for land and property could often be unclear, as was the relevant body responsible for dealing with matters that had been raised</li> <li>• Better promotion of reporting tools could be achieved by using parish and town council communication channels, such as parish magazines</li> <li>• Matters could be reported to district councillors, whom would, in turn escalate matters of community concern.</li> </ul> <p><b>ACTION:</b> AJ to draft wording for wider communication, including in the East Suffolk Magazine.</p>
<b>7.</b>	<p><b>Funding Proposals</b></p> <p>AJ tabled 3 outcome proposals that had been prepared for consideration and endorsement by the Community Partnership. Having been duly discussed and considered and with the assent of the core Members present, the following 3 proposal outlines were endorsed.</p> <p><b>1. Improved road safety on B1078 at Clopton village- £1100 to:</b></p> <ul style="list-style-type: none"> <li>• Provide improved signage at a recognised site of near misses used by majority of Clopton residents</li> <li>• Reduce traffic speeds past local junction</li> <li>• Increase visibility of signage to adjust driver behaviour</li> </ul> <p><b>2. Provision of seating and garden area for residents to meet and spend time outdoors- £700 to:</b></p> <ul style="list-style-type: none"> <li>• Increase usage of Tuddenham St Martins playing field and associated facilities by a wider range of residents</li> </ul>

	<ul style="list-style-type: none"> <li>Expand the range of uses the playing field provides, especially for older residents</li> </ul> <p><b>3. Road Safety education for all through young people and creative process- £2,993 to:</b></p> <ul style="list-style-type: none"> <li>Increase the presence of road safety education materials available throughout the Community Partnership area through social media, site based content and other means in a creative way.</li> <li>Deliver a road safety project that has a clear legacy – materials to engage all road users in discussion and reflection about their own responsibilities when using the roads.</li> </ul> <p>The Chairman was pleased to see the range of proposals that had come forward, and it was noted that the Partnership had allocated all of its funding for the year.</p>
<b>8.</b>	<p><b>Date of the Next Meeting</b></p> <p>It was noted that due to local elections the dates of forthcoming meetings of the Community Partnership would be confirmed after May 2023</p>

The meeting concluded at 4.20 pm

## **COMMUNITY PARTNERSHIP CHAIR'S BRIEFING NOTE**

### **COMMUNITY PARTNERSHIP BOARD – 27 JUNE 2023**

HELD AT THE FROMUS CENTRE, SAXMUNDHAM.

#### **1. Introduction**

- All eight Community Partnerships are represented on the Community Partnership Board by their respective Chairs. The meeting agendas and papers can be viewed [HERE](#)
- The agenda was split into two 1-hour sessions:
  - i) Formal CP Board meeting
  - ii) Workshop focused on the UK Shared Prosperity Skills Fund

#### **2. New Chair of the Board**

- Caroline Topping introduced herself as the new Chair
- The Board ToRs state that the Board will be chaired by the Leader of ESC, and that the Chair will “Provide a strong sense of purpose and direction to the Board and drive the Board’s annual work programme.”
- Following the elections there have been eight other changes to the ESC representation on the Board (seven new CP Chairs and Portfolio Holder for Communities).

#### **3. Election of Vice Chair for 2023-24**

- Lisa Perkins (Director Adastral Park) was re-elected as Vice Chair
- The Board TORs state that a Vice Chair will be elected annually by the members of the CP and will deputise for the Chair in her absence

#### **4. Community Partnership Priorities / Focus on Community Partnerships (Katie Graham and Nicole Rickard)**

These items were for information only. Nicole and Katie provided a brief overview of the ambitions for Community Partnerships and the Board, and a reminder of the projects supported to date.

See presentation here: [Community Partnerships update](#)

#### **5. Ease the Squeeze programme update (Nicole Rickard)**

The Board received a report which provides a brief update on the programme so far and an overview of the key learning points from the first 12 months of Ease the Squeeze.

See report here: [Ease the Squeeze update](#)

The Board considered the clear and ongoing unmet need around Isolation and Loneliness and agreed that this should be a topic for a CP Board meeting in the near future and that the Social Isolation and Loneliness Task Group should be reformed to scope the topic and potentially develop an outcome proposal for funding from the Board.

Each of the eight CP’s are welcome to put forward a represented on the Task Group.

#### **6. Buzzabout Demand Responsive Transport Service (Nick Khan, Luke Bennett and Mags Lambert)**

The Board received a brief update on the Demand Responsive Transport element of the Transport and Travel Programme.

See presentation here: [Transport and Travel Update](#)

The Board then considered the outcome proposal published with the meeting papers. The proposal was to extend the trial to provide a demand responsive transport (DRT) service for residents and visitors in Lound, Blundeston, Somerleyton and Gunton St Peters and the north of Lowestoft. Following an initial pilot, lessons learned have informed the new, lower cost operating model proposed. The introduction of an app for booking journeys, adjusted operating times, and a renewed marketing campaign will help overcome barriers to awareness and access.

See outcome proposal here: [Buzzabout Trial Extension Proposal](#)

The Board allocated £30,000 to extend the pilot until August 2024.

## 7. Dates of next meetings

The Board confirmed the dates of CP Board meetings for this financial year

- 13 September 2023 at 2.00pm in the Deben Conference Room, East Suffolk House
- 13 December 2023 at 10.00am, Orbis Energy, Lowestoft
- 7 March 2024 at 2.00pm, venue to be confirmed

Also: The provisional **date for the annual forum is 22 March 2024** and the Board would like to see as many CP members there as can make it.

## 8. UK Shared Prosperity Fund Skills Workshop (Marie Webster-Fitch, Kay Bonning-Schmitt, James Chandler, Michael Gray – SCC)

See report here: [UK Shared Prosperity Fund Report](#)

This workshop gave a full overview of the funding available and sought to prioritise where funding is best spent from the UK Shared Prosperity Fund (UKSPF) during 2024/25. The CP Board provides oversight of the UKSPF programme.

The Board received a presentation on the challenges and opportunities that are available within the people and skills investment priority, in order for the Board, plus several additional invitees to prioritise, to help prioritise where funding is best spent from the UK Shared Prosperity Fund during 2024/25.

See presentation here: [UKSPF skills Programme Workshop](#)

The outcomes of the workshop, together with progress on shaping the programme will be shared with the Board.

[Luke Bennett 28.06.23]



## East Suffolk Community Partnerships - Terms of Reference

***Community Partnerships (CPs) are an innovative way for the Council, partners and communities to work together to 'bring ideas to life' by taking a local approach to local priorities, following the creation of East Suffolk Council (ES), with larger wards and fewer (55) Councillors.***

### **1. Form and Membership**

- 1.1 There will be eight Community Partnerships (CPs), covering the whole of the ES Council area, based on groupings of communities, and using the ES ward boundaries as the building blocks. A plan showing the area of each CP is attached to these terms of reference. The CPs will report to the CP Board and the ES Cabinet.
- 1.2 The core voting membership of each CP will be drawn from the following pool dependent on the priorities of the CP (which means that each CP's membership will vary as some sectors or individuals may not be included as voting members, although they could be included as non-voting interested bodies/people):
  - The ES Councillors for the CP area (between 4 and 14 Councillors)
  - The Suffolk County Council (SCC) Councillor(s) for the CP area (to sit on whichever/however many CPs best fit their SCC Division)
  - 2 representatives (from each Town Council in the CP area)
  - A representative from at least one Parish Council/Meeting for each of the individual ES wards within the CP area
  - A representative from Suffolk Police
  - A representative from Great Yarmouth and Waveney CCG or Ipswich and East Suffolk CCG (whichever serves the CP)
  - At least two representatives from the Voluntary, Community and Social Enterprise sector (VCSE) nominated and supported by Community Action Suffolk
  - At least one representative from the business community
  - At least one representative from the youth community
  - A representative from Lowestoft Rising, Leiston Together or Felixstowe Forward, in the CPs covering Lowestoft or Leiston or Felixstowe.
  - At least one of the core members to be a 'rural champion' – representing and championing the views and needs of rural communities
- 1.3 Core voting members of the CP will be expected to;
  - live, work or trade in the CP area,
  - have sufficient authority to speak for their organisation/partnership and
  - report back to their organisation/partnership on the activities of the CP.
- 1.4 The quorum for any meeting of the CP will be a minimum of 6 voting members of the CP. The membership of the CP will be reviewed annually in May, following the District or County Council elections (where applicable). If there is not a quorum present at each meeting of the CP, it will not be able to make any decisions at that meeting.

*Updated: April 2021*

## **2. CP Principles**

- Involve local councils, public services, communities, voluntary sector organisations and businesses in planning and delivering joined up services that meet local needs
- Make the best collective use of our assets and resources
- Base decisions on data and intelligence about local places
- Identify, understand and address deprivation, disadvantage and hidden needs and consider how CP decisions impact on both rural and non-rural areas
- Champion, represent and influence on behalf of East Suffolk and the eight Community Partnerships

## **3. Role of the CPs**

### **3.1 CPs will:**

- a) focus on cross cutting issues for which no one organisation is solely responsible
- b) hold an annual CP workshop, ideally including representatives of the wider community of the CP area to set or confirm the priorities for that CP, which are based on local data and knowledge
- c) develop an annual work plan to address the CP priorities for the coming year, and support delivery of the ES Strategic Plan
- d) address the CP priorities and identified gaps in service provision using a solution-focussed and problem-solving approach
- e) monitor and adapt their agenda in response to emerging issues affecting the CP area or a wider area in ES, including issues raised through Youth Voice and other sources of community intelligence
- f) report quarterly to the CP Board, and annually to the ES Cabinet, on progress against their priorities, and provide such other verbal/written reports to other organisations or partnership bodies, as requested.
- g) develop proposals for expenditure against the annual budget of £25,000 per CP and seek authorisation for actual expenditure from the ES Cabinet Member for Communities
- i) bid for additional funds from the ES Strategic Budget and from other external sources in order to deliver the priorities of the CP
- j) create Task & Finish/Working Groups as required to explore specific issues/priorities in greater detail
- k) conduct or commission research into policy or service delivery issues affecting the CP area
- l) actively support and send representatives to participate in the CPs Annual Forum
- m) ensure that all decisions have given due regard to the direct and indirect impacts on rural areas

## **4. Chair and Vice Chair of CPs**

### **4.1 Each CP will be chaired by an ES Councillor for the CP area, appointed by the Leader of East Suffolk Council. This Councillor will (a detailed Job Description is available);**

- fulfil this role until such time as they are replaced by the Leader of East Suffolk Council
- sit on the East Suffolk CP Board
- provide a strong sense of purpose and direction to the CP
- drive the CP's annual work programme
- work alongside a range of Officers including the Communities Officer, Communities Manager and other Communities Team members, Head of Communities and the Partnerships Manager.

*Updated: April 2021*

- 4.2 The Vice Chair will be elected annually by the members of the CP and will deputise for, and take decisions on behalf of, the Chair in their absence.

## **5. Meetings of the CPs**

- 5.1 CP Meetings will be by invitation but held in public and their style will be inclusive and interactive. Wherever possible they will be organised to problem solve (for example workshop style) rather than as formal meetings.
- 5.2 The “Municipal Year” for CPs will align with the financial year so will run from April to March and meetings will normally be held at least three times each year, although additional meetings may be called by the Chair as necessary, on at least five clear working days written notice. Task and Finish Groups may be established in order to progress Community Partnership business between CP meetings.
- 5.3 The dates of each CP Meeting will be agreed in advance by the CP and they will be held at a suitable venue within the CP area or remotely using video conferencing facilities.
- 5.4 Any member of the CP may request that an item be included on the agenda for a meeting. The meeting papers will be sent out by electronic mail (or post if necessary to those without internet access) to all members of the CP no later than five clear working days before the meeting.
- 5.5 Agendas and action points arising from each meeting will be recorded and published on the Community Partnership pages of the ESC website.

## **6. Voting**

- 6.1 The aim at each CP meeting will be to reach decisions by a consensus with all core voting members of the CP being eligible to vote, and each will have one vote, indicated by a show of hands. The Chair of the CP will determine when there is no consensus and therefore an issue should be put to the vote. However, it is suggested that any funding matters should generally be voted on formally with core voting Members stating their vote verbally. Whichever method is used, a majority vote of those present and voting will prevail. The Chairman of the CP will have a casting vote.

## **7. Financial Accountability**

- 7.1 The ES Council will operate as an accountable body for the eight CPs and the CP Board. The budget for each CP will be allocated against agreed priorities (unique to each CP) and clear criteria (the same for all eight CPs) which will be agreed at the first meeting of the CP each year. These are designed to ensure that this funding is not used for purposes beyond the ES Council’s powers, or the law, and that projects supported align with the ES Council’s Strategic Plan.

## Framlingham, Wickham Market and villages Community Partnership

### **Meeting Ground Rules**

1. Bring your experience, ideas, knowledge, skills and enthusiasm and be prepared to share this with the rest of the group.
2. Respect other people's views and opinions and remember not to dominate the meeting with issues relating to just your area or your political views.
3. Everyone is encouraged to participate throughout the entire meeting and treat everything you hear as an opportunity to learn and grow.
4. Allow every voice to be heard, avoid side conversations and value other people's contributions.
5. Come prepared to each meeting having completed any agreed actions from previous meetings or Task and Finish Groups - Staying on schedule is everyone's responsibility.
6. Be honest and respect confidentiality
7. Expect to be surprised and remain open to new ways of doing things and ensure you understand the pros and cons of every option, not just those you prefer.
8. Ask questions to seek clarification when you don't understand the meaning of someone's comments
9. Bring your humour and have fun!

# Kesgrave, Martlesham and villages Community Partnership profile



# Population

## Key facts



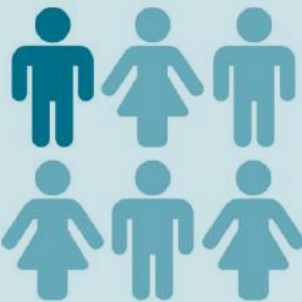
Total population  
**36,000**



Largest age group  
**45-49**



Smallest age group  
**85+**



Just under  
**1 in 5**  
people are aged  
under 16

19%; national average 20%



Just under  
**1 in 4**  
people are aged 65+

23%; national average 18%



**1,120**  
people aged 85 or  
over

3.1% of total population; national  
average 2.4%

# Population

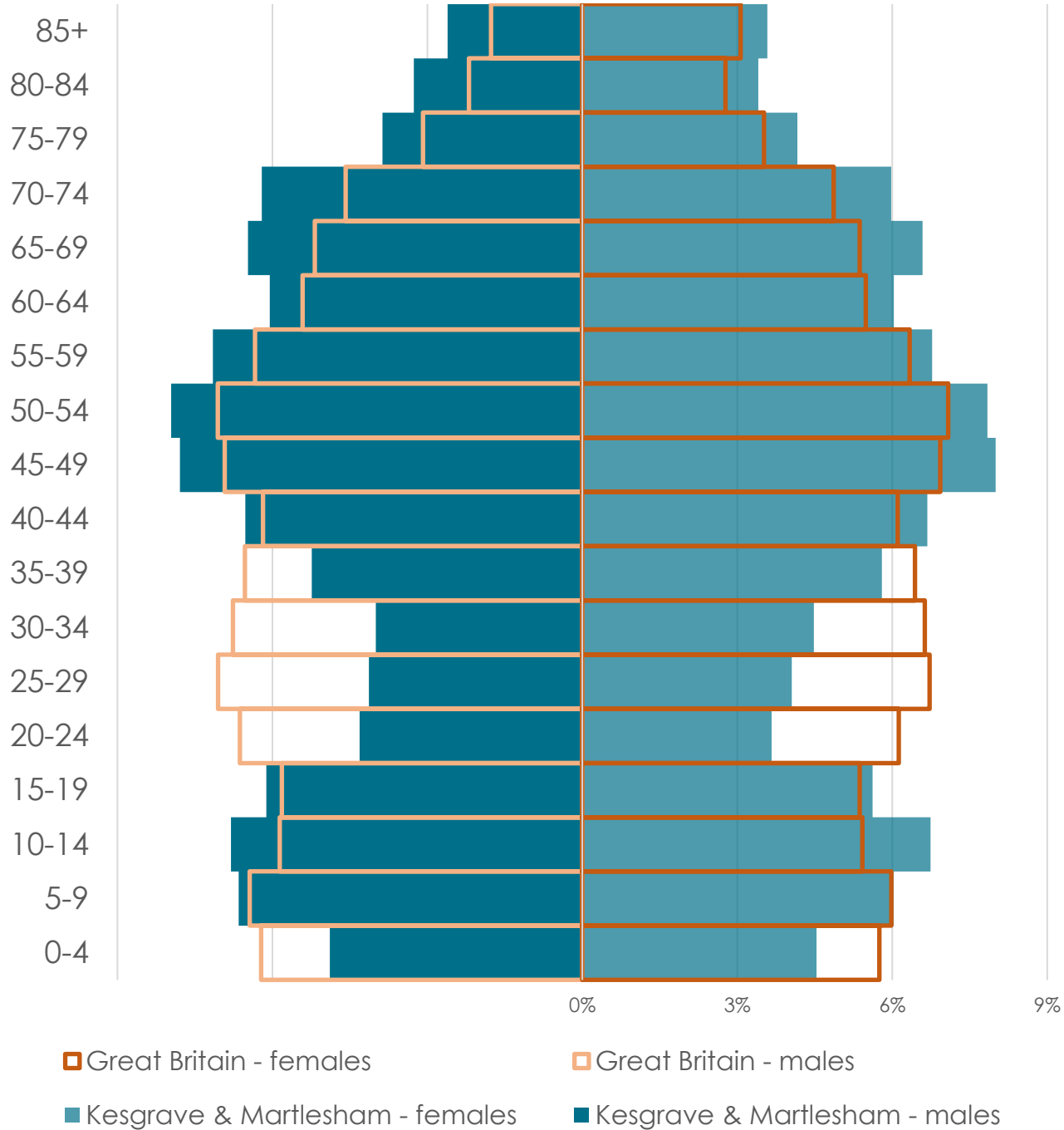
## Age breakdown

The age pyramid shows the age breakdown of the population of Kesgrave and Martlesham CP against the national average

Most over-represented age group: **80-84**

Most under-represented age group: **25-29**

Kesgrave and Martlesham CP has a lower proportion of young adults aged 20-39 and children under the age of 5 than the national average



# Deprivation

## Key facts



**1,670**

people affected by  
income deprivation

**4.6%**

**Suffolk average 10.1%**



**4.4%**

of working age  
people affected by  
employment  
deprivation

**Suffolk average 8.3%**  
**830 people**



**370**

children affected by  
income deprivation

**5.4%**

**Suffolk average 13.6%**



**650**

older people affected  
by income deprivation

**6.2%**

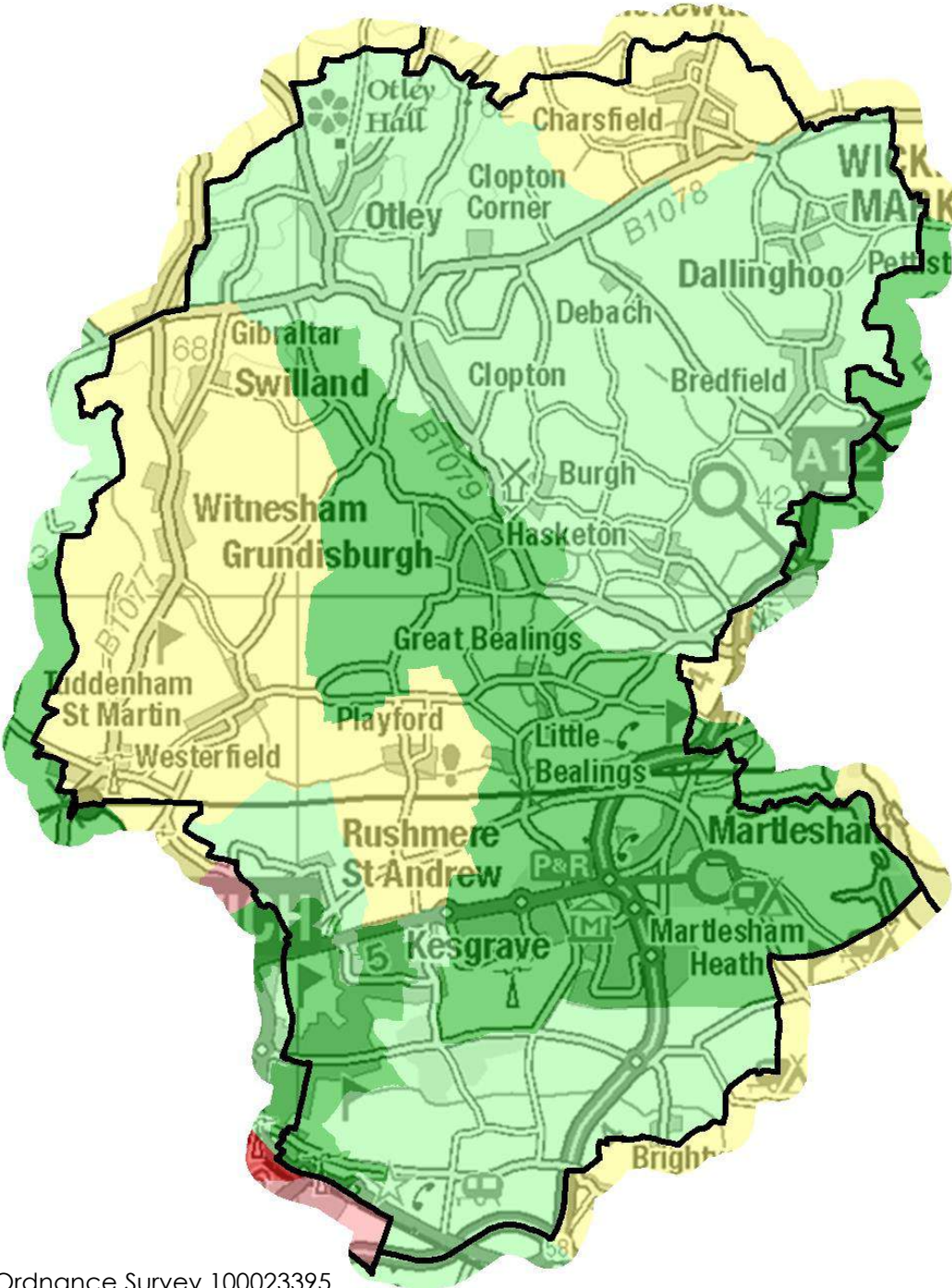
**Suffolk average 10.4%**



# Deprivation Overall

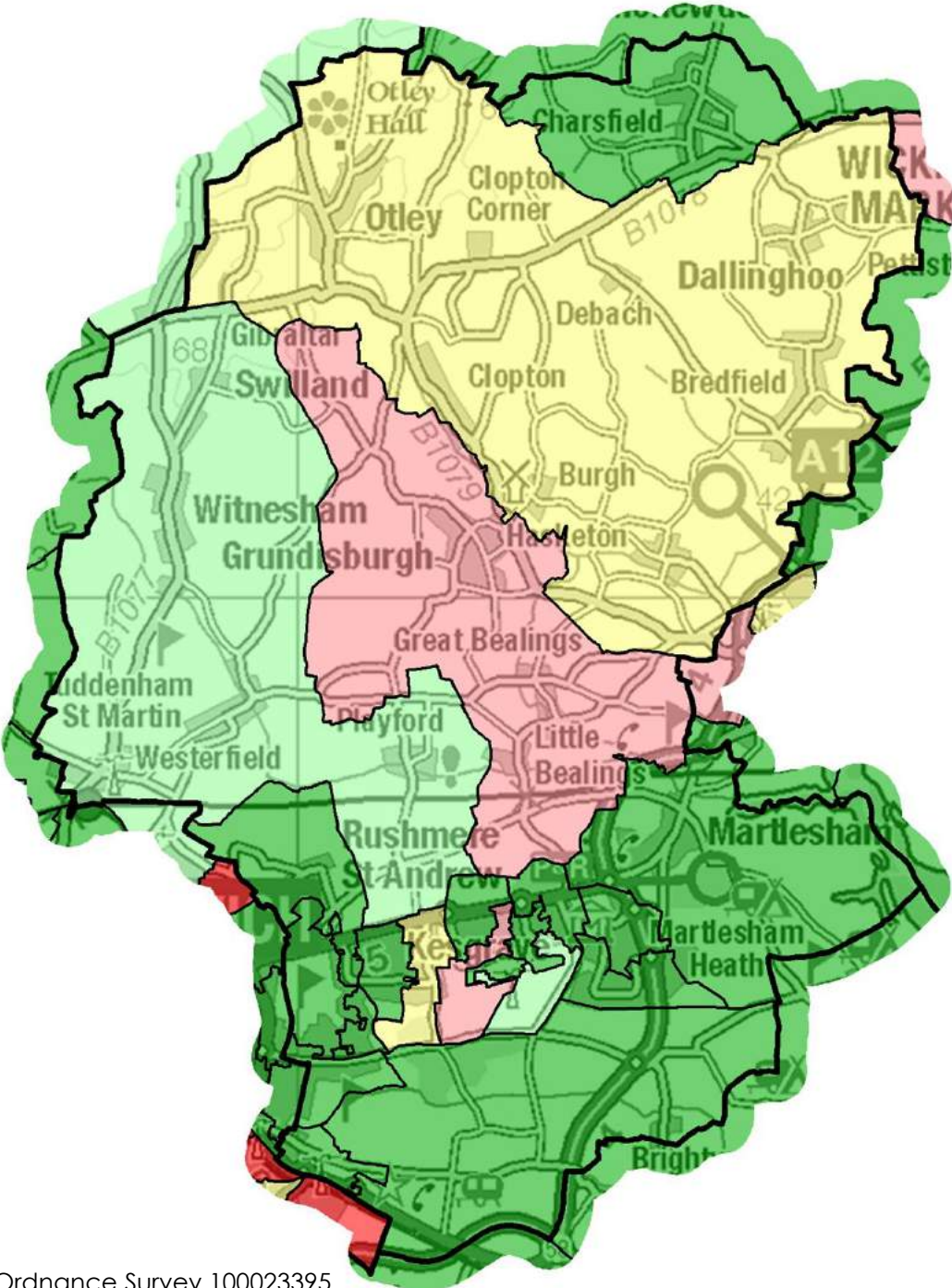
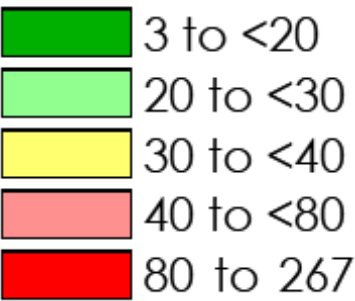
IMD quintile	Population	% of population
1	0	0%
2	0	0%
3	2,420	7%
4	6,440	18%
5	27,170	75%

1 = most deprived 20% of areas in England  
5 = least deprived 20% of areas in England



# Deprivation Children

## Children aged 0-15 income deprived

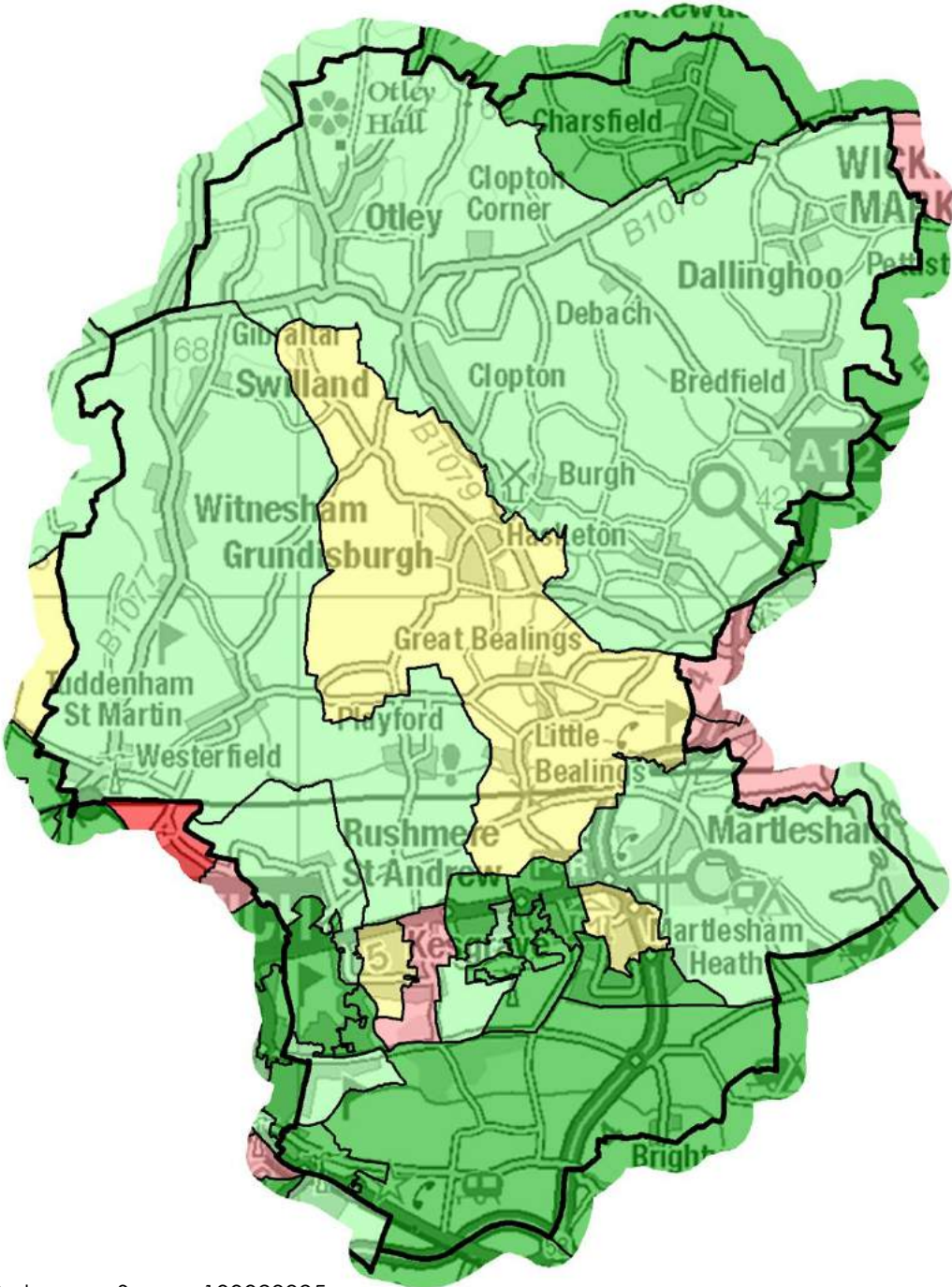
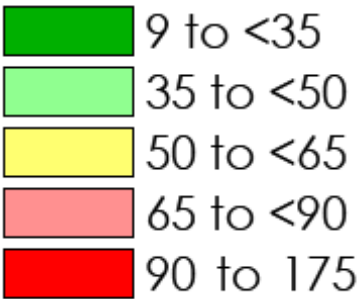




# Deprivation

## Older people

### People aged 60+ income deprived



# Health and social care

## Life expectancy

### Wards (2018)

	Life expectancy at birth for males	Life expectancy at birth for females
Fynn Valley	83.3	84.1
Grundisburgh	84	87.9
Kesgrave East	81.9	83
Kesgrave West	84.1	85.1
Martlesham	82.4	84.9
Nacton & Purdis Farm	80.3	84.7
Tower	83.5	87.6
Wickham Market	83.1	85.1
Woodbridge	82	86.4
Suffolk Coastal	81.7	84.8
Waveney	79.4	82.9
Suffolk	80.8	84.1

### Highest and lowest life expectancy in East Suffolk

Deben Ward (Woodbridge CP)	84.4	
Kirton Ward (Felixstowe CP)		93.1
Kirkley Ward (Lowestoft)	73.5	78.3



**3.8 years**  
the gap in life expectancy for males between Kesgrave West and Nacton & Purdis Farm Wards

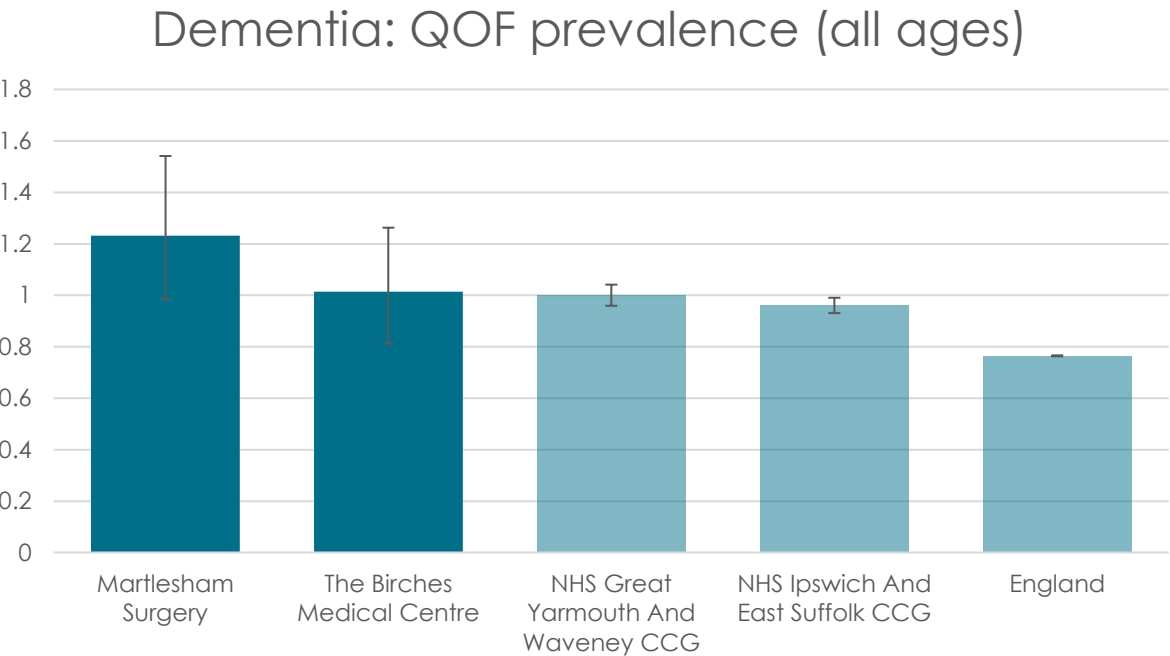


**4.9 years**  
the gap in life expectancy for females between Grundisburgh and Kesgrave East Wards

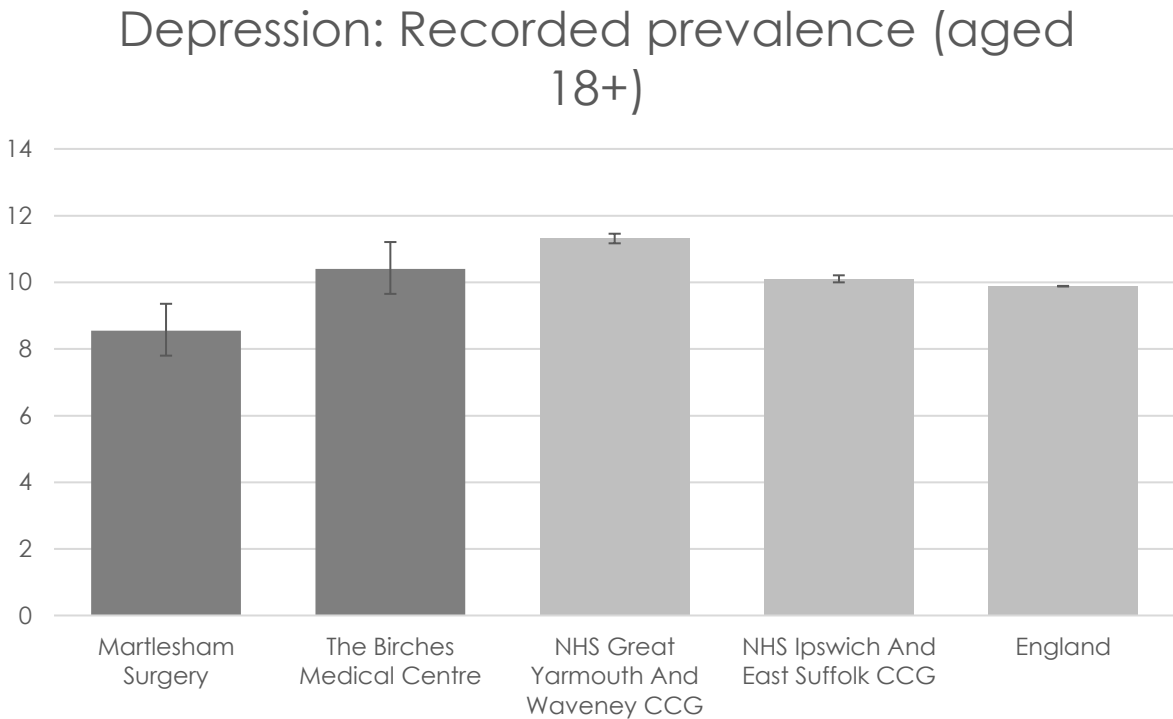
Source: ONS, 2013-2017 data. Accessed via localhealth.org.uk. Data not yet available for the new 2019 East Suffolk wards

# Health and social care

## Mental health



Prevalence of dementia is higher than the national average among patients at both GP surgeries in the Kesgrave, Martlesham and villages Community Partnership area



Prevalence of depression is higher than the national average among patients at The Birches Medical Centre

# Health and social care

## Childhood weight

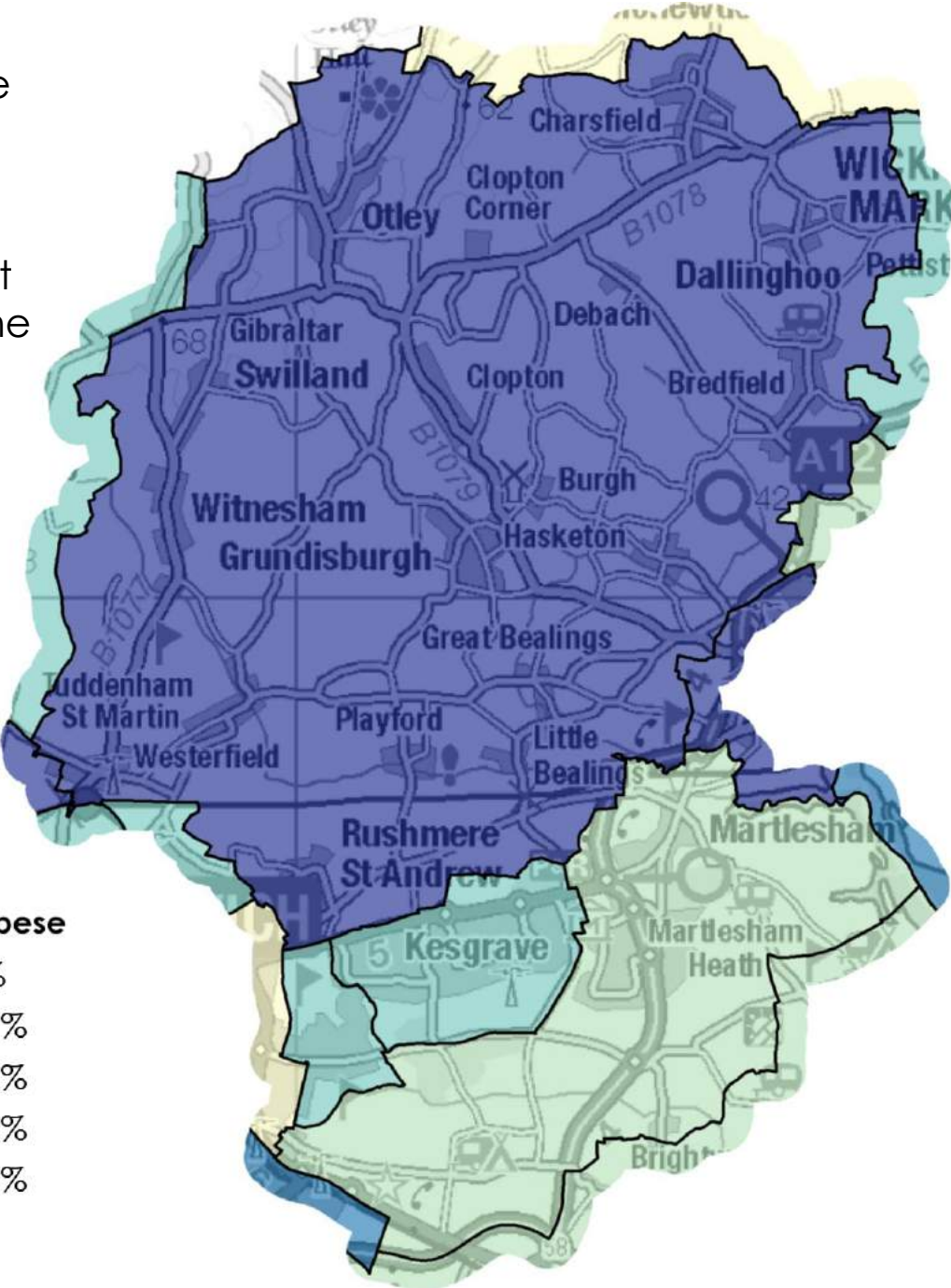
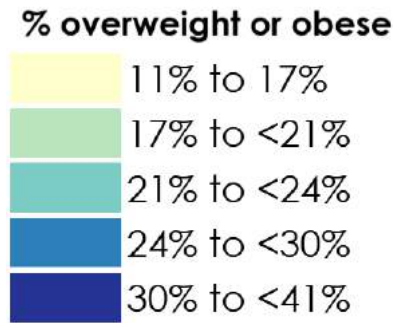


Primary school children\*  
overweight or obese

Lowest CP: Framlingham & Wickham  
Market 20.5%

Highest CP: Lowestoft 34.5%

The map shows the percentage of children measured as overweight or very overweight according to the National Child Measurement Programme (NCMP) at District Ward level





# Health and social care

## Physical activity



**34.2%**

of adults complete 2+ hours of  
exercise per week

Lowest CP: Lowestoft 29.3%  
Highest CP: Framlingham & Wickham Market 34.4%  
UK average: 31.0%



**42.1%**

of adults do not exercise

Lowest CP: Kesgrave, Martlesham &  
villages 42.1%  
Highest CP: Lowestoft 49.7%  
UK average: 46.2%

# Health and social care

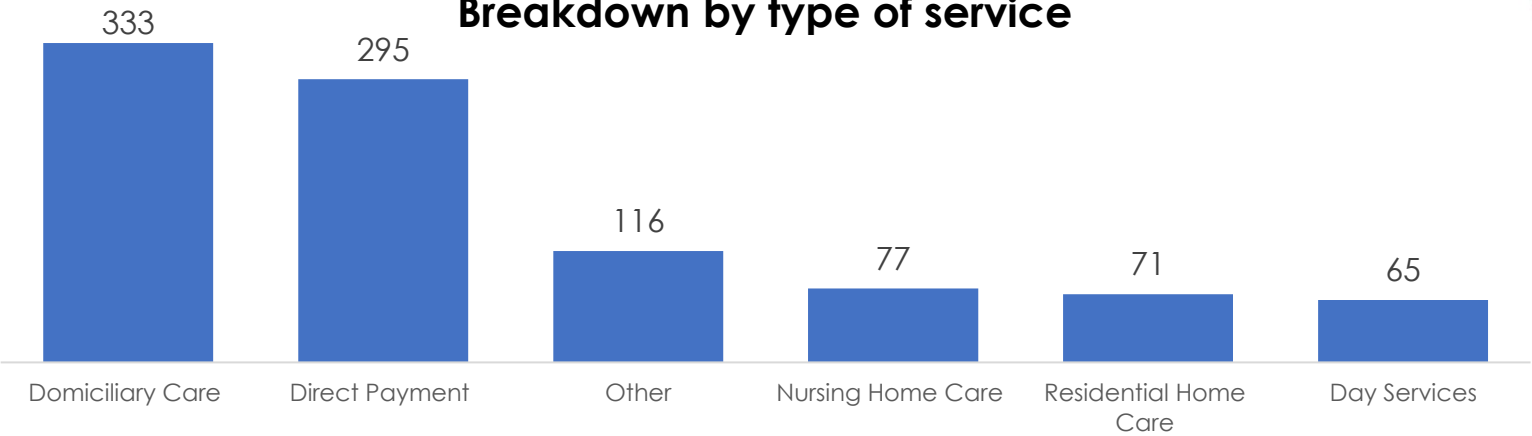
## Adult care



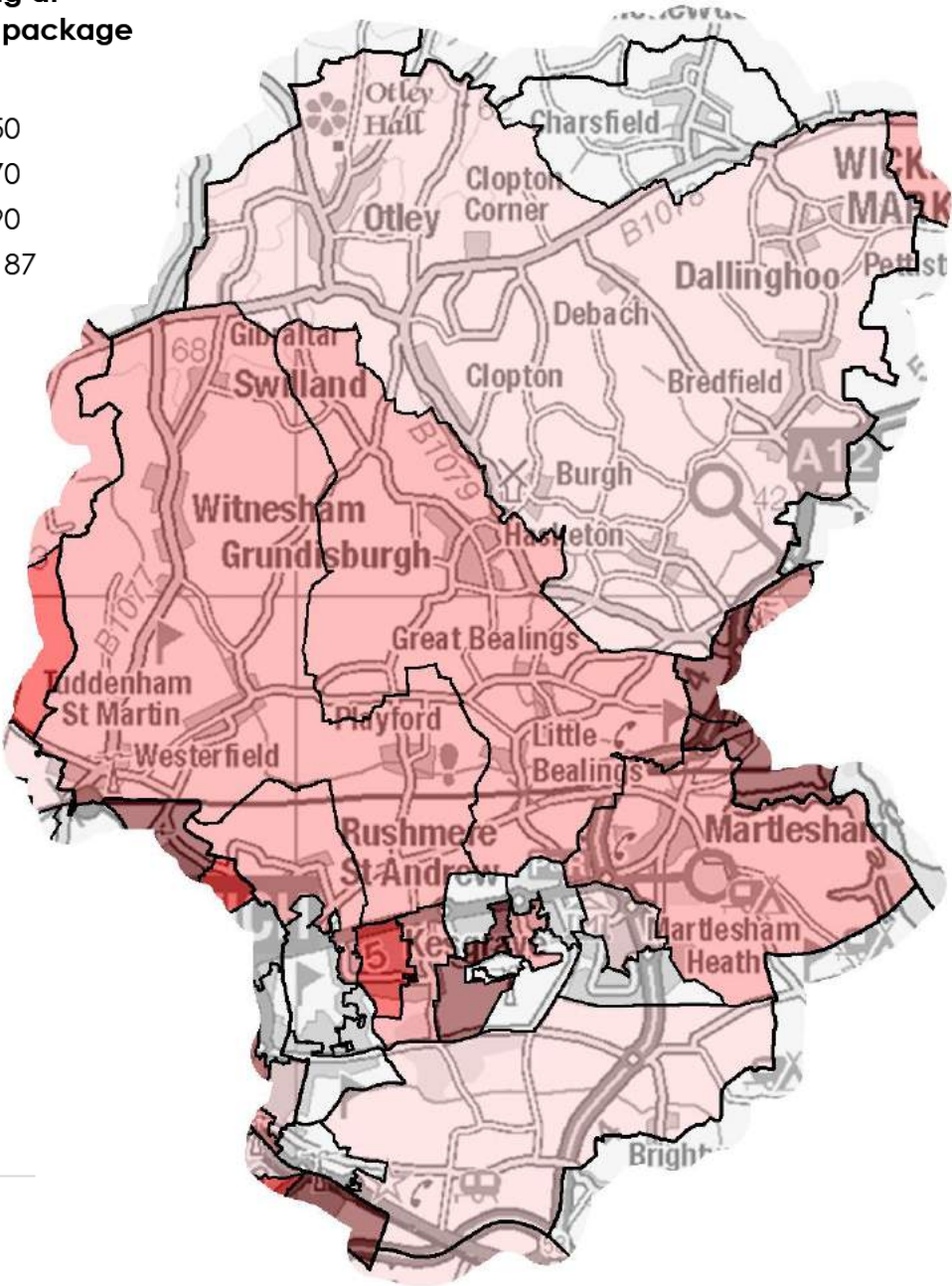
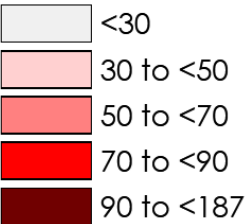
795

Adults received a social care service in the last two years

Breakdown by type of service



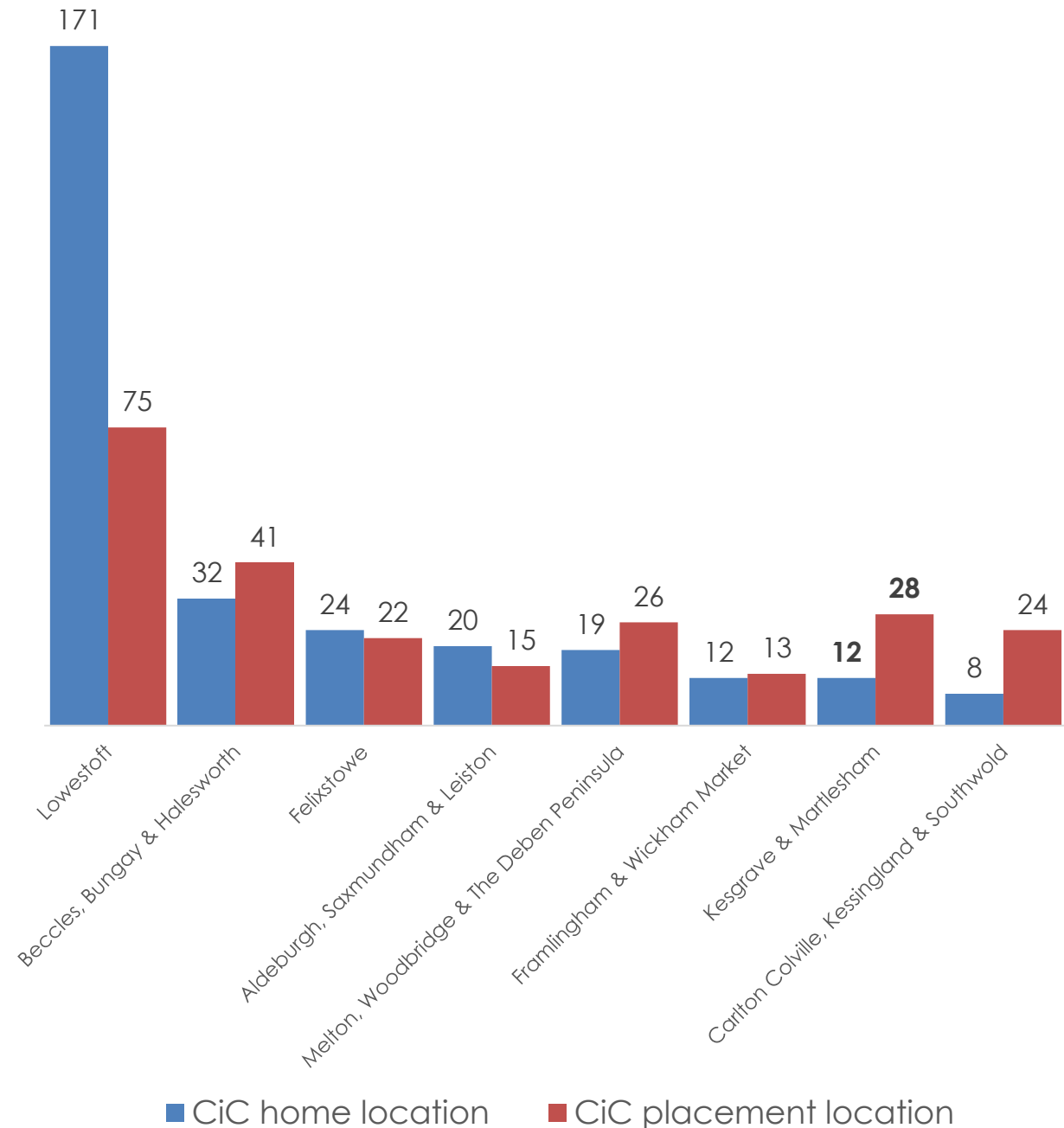
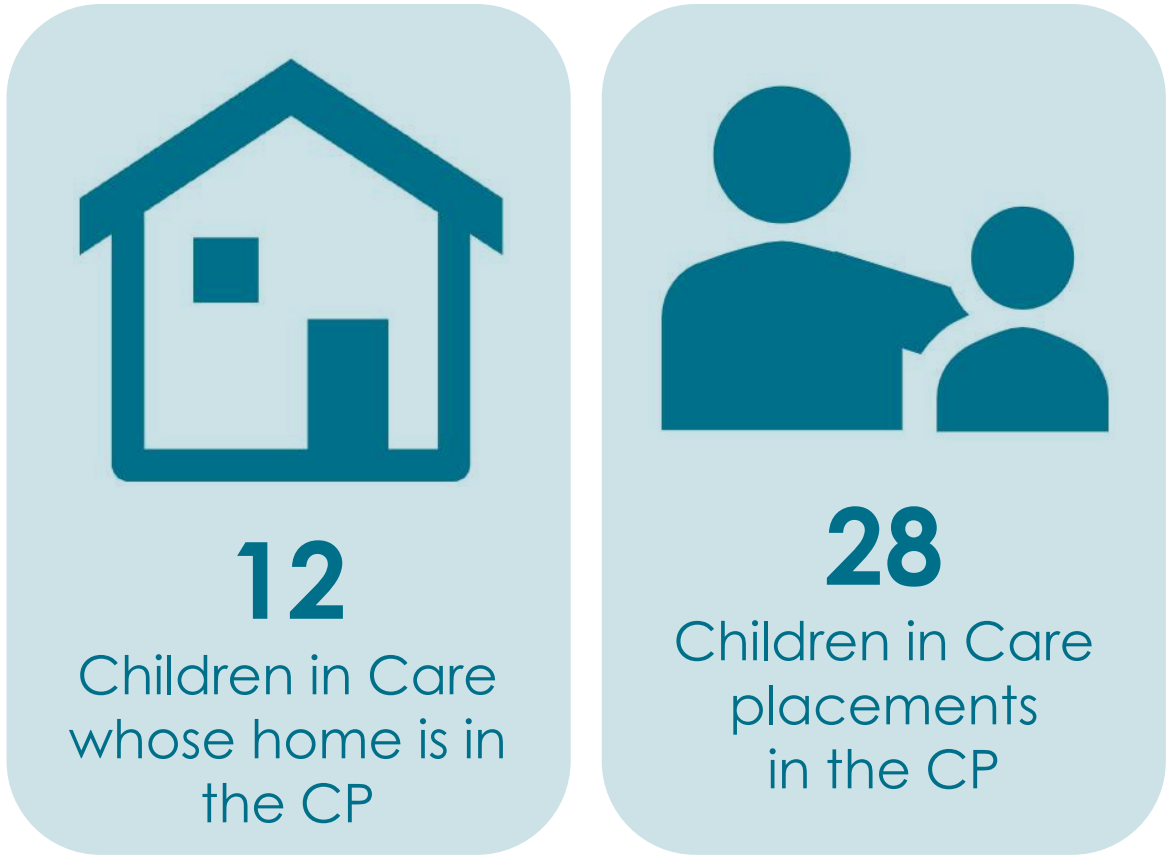
Adults receiving at least one ACS package





# Health and social care

## Children's care

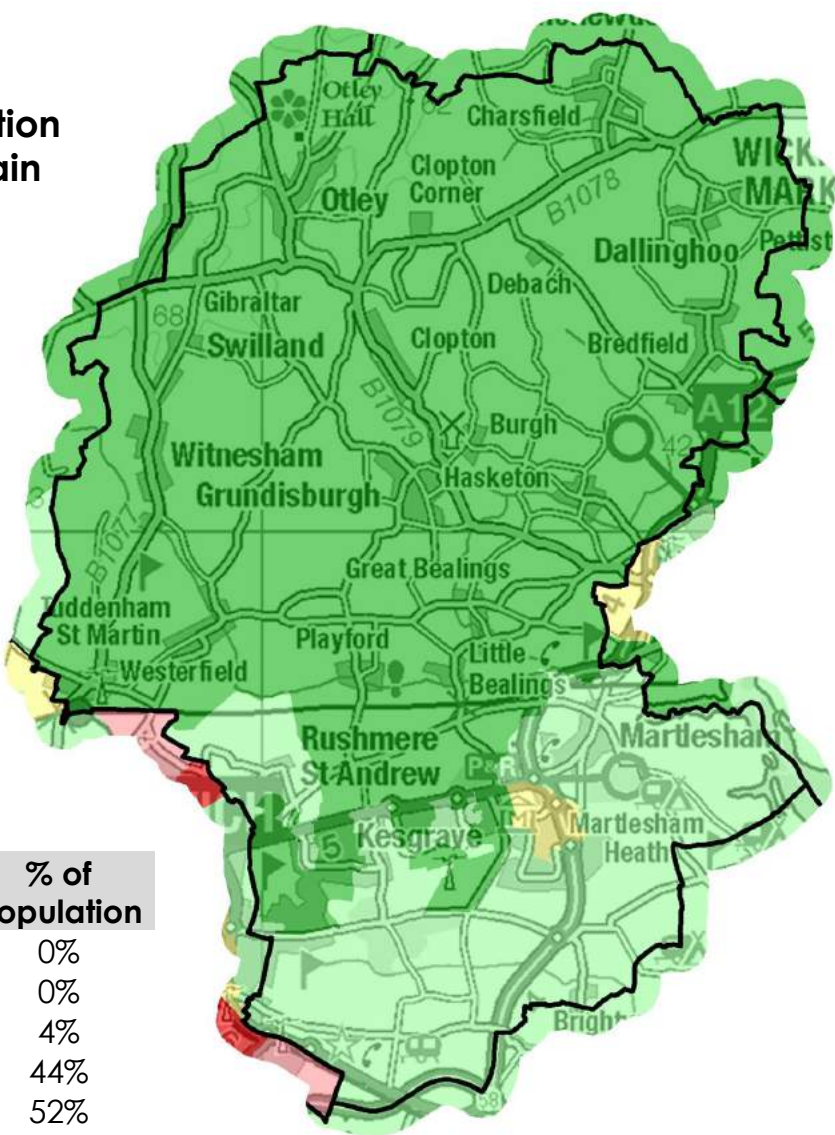


Source: Suffolk County Council CYP iHub. July 2019 data

# Health and social care

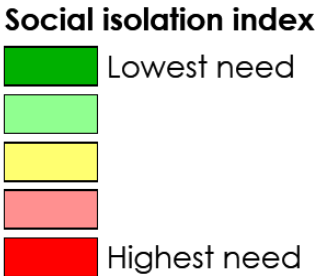
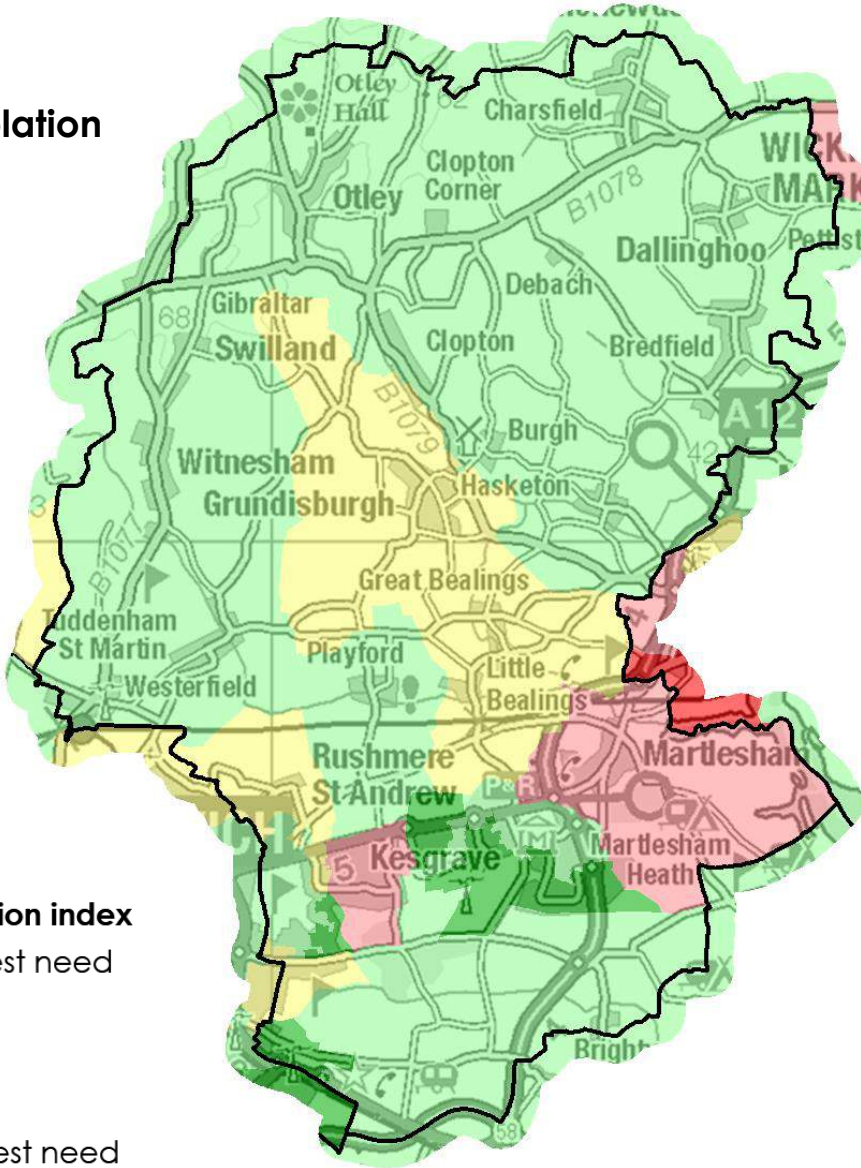
## Disability and social isolation

IMD health deprivation and disability domain



IMD quintile	Population	% of population
1	0	0%
2	0	0%
3	1,150	4%
4	15,710	44%
5	18,770	52%

Social isolation

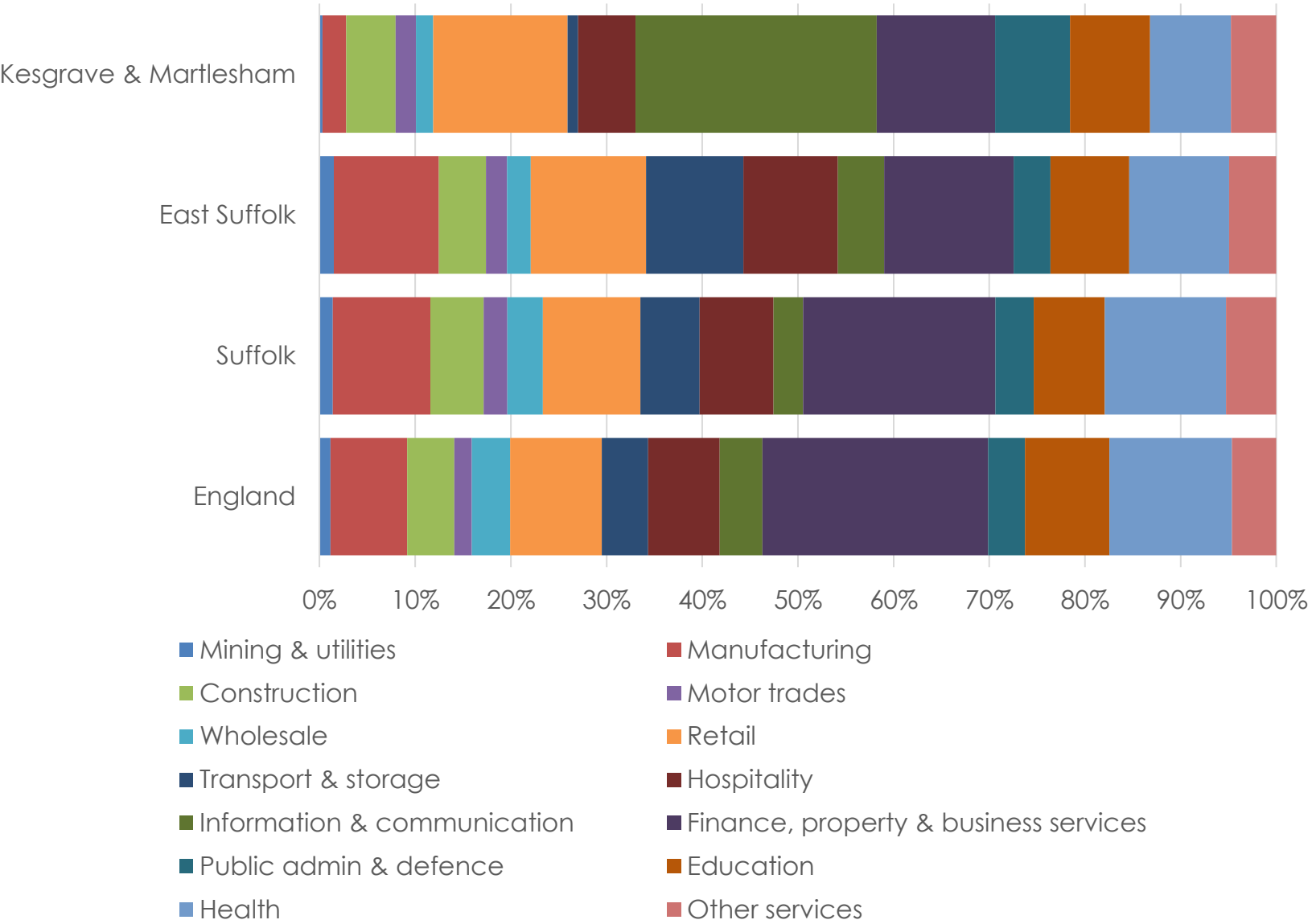


# Employment and education

## Employment



Information & communication  
accounts for  
**1 in 4**  
jobs in Kesgrave,  
Martlesham and villages  
CP, compared to 1 in 33  
across Suffolk and 1 in 25  
in England



Source: ONS Business Register and Employment Survey 2017



# Employment and education

## Benefit claimants

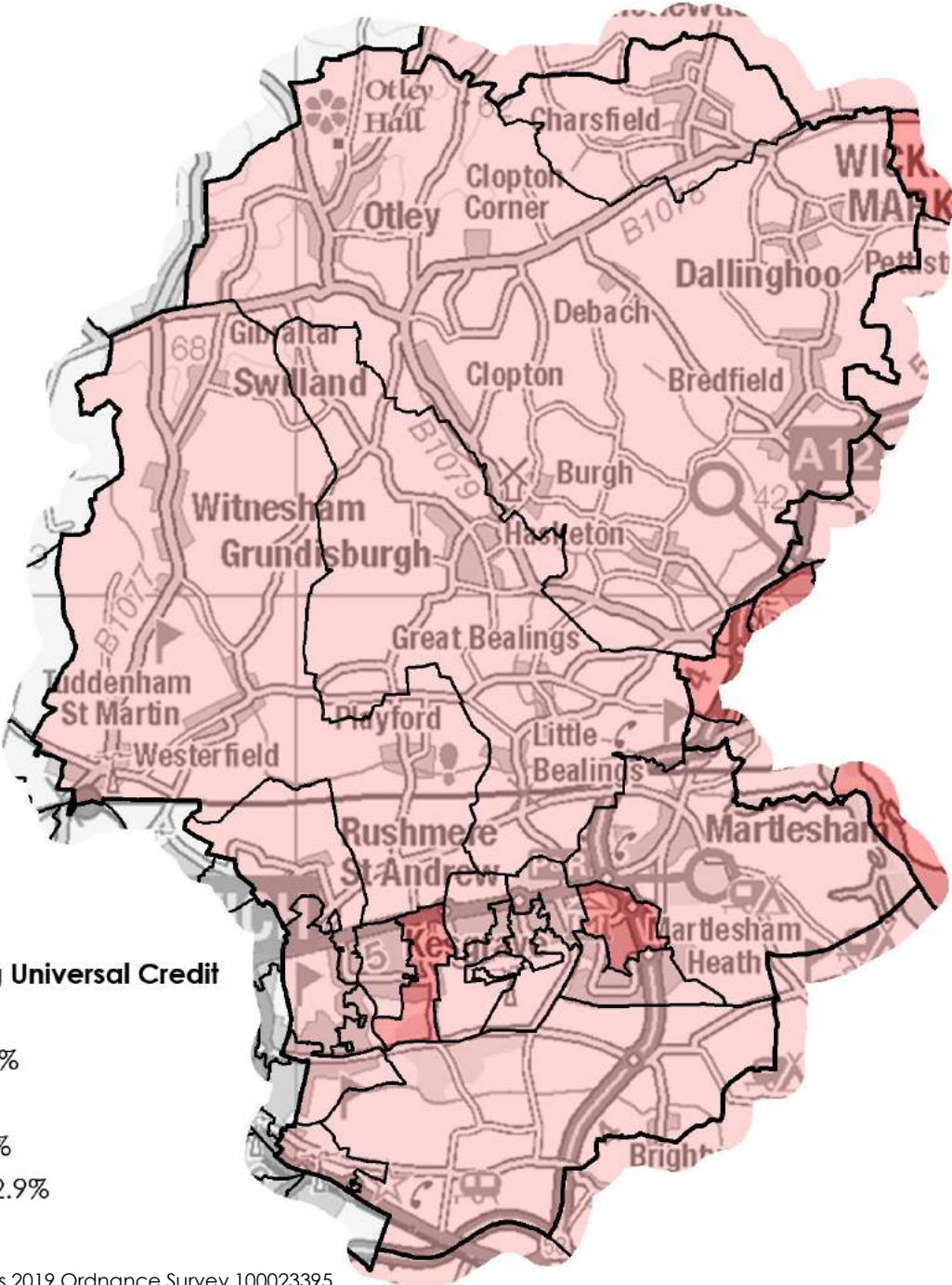


1.7%

of adults in receipt of  
Universal Credit

Highest CP: Lowestoft 15.7%

Lowest CP: Kesgrave, Martlesham and  
villages 1.7%



# Employment and education

## Education – Key Stage 2

### Ofsted breakdown



11

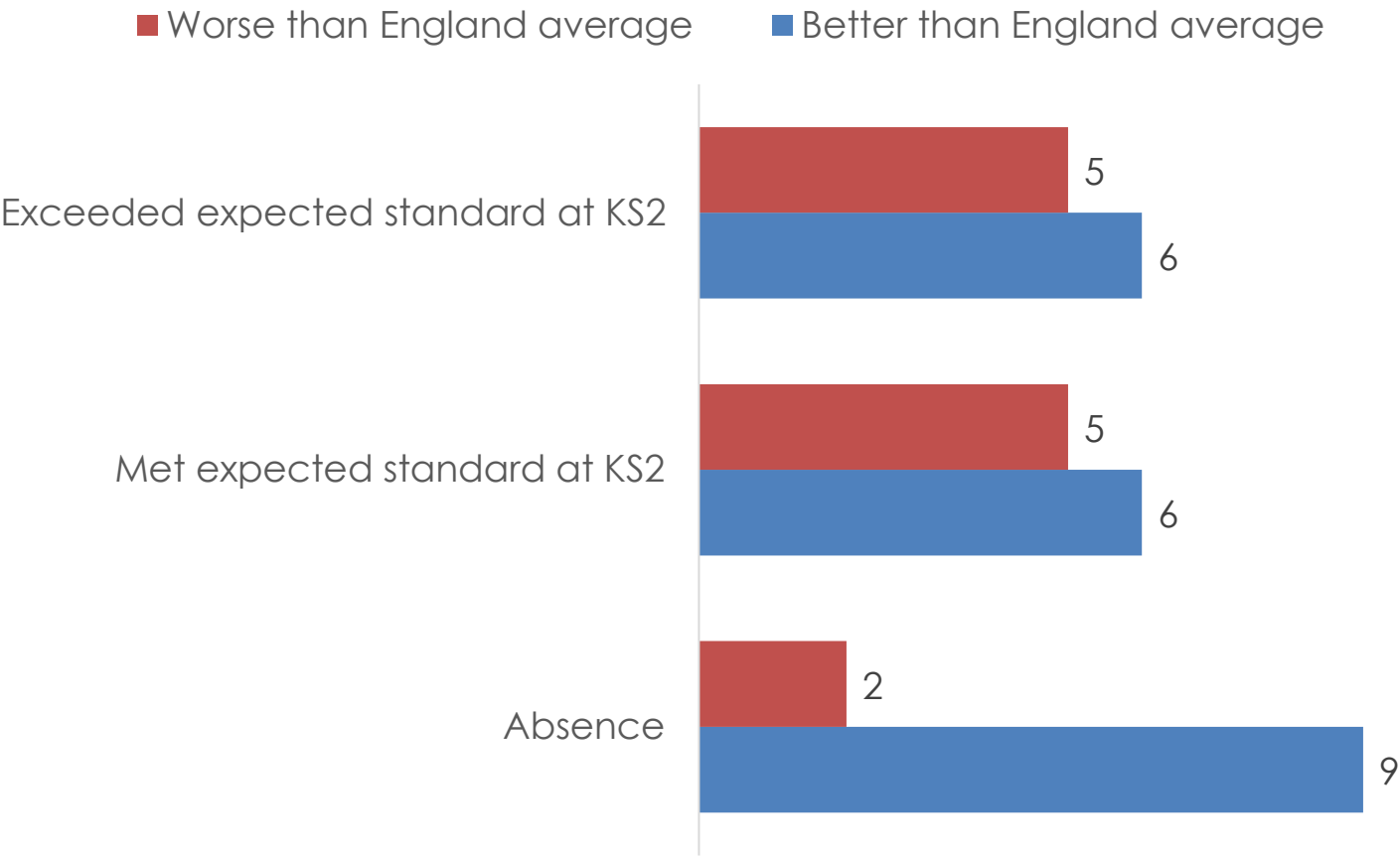
Outstanding or Good



0

Require improvement  
or Inadequate

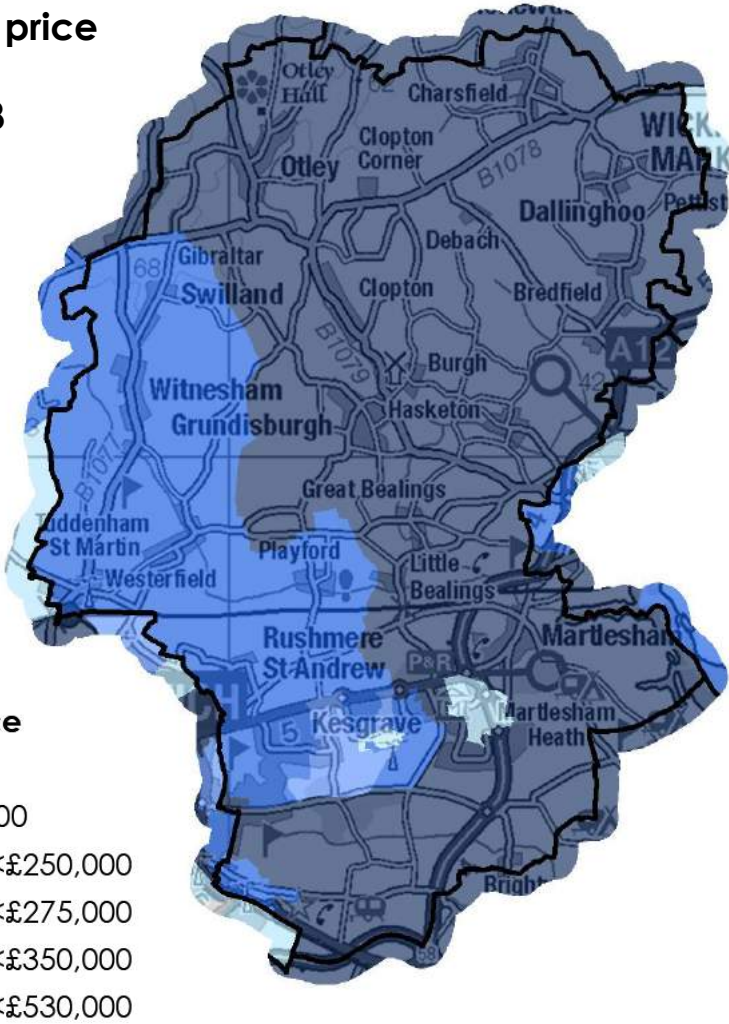
### Number of Kesgrave and Martlesham schools where the % of KS2 pupils...



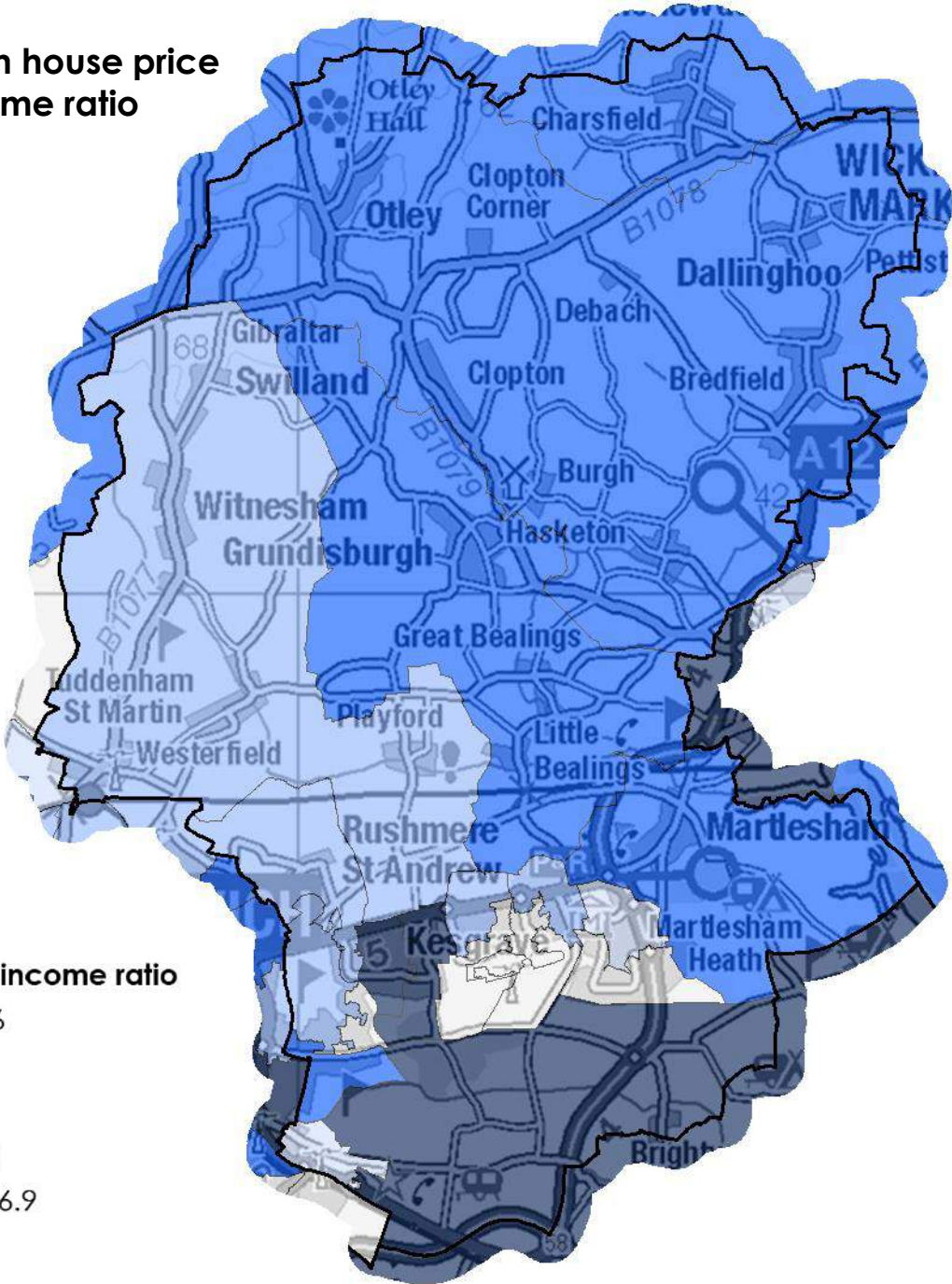


# Housing Prices and affordability

Average house price  
for the year to  
December 2018



Median house price  
to income ratio



# Housing

## Gateway to Homechoice and Homelessness



### Applications

There are currently 3,991 applications on the Housing Register broken down below by banding. The figures for the Kesgrave area show the applicants who claim a local connection to the Kesgrave and Martlesham area, which represents **4% of the register**

A	B	C	D	E	F	total
10	12	18	8	103	0	151 Kesgrave area
167	376	801	292	2345	10	3991 total register

### Lets

There were 981 properties let through the register 1<sup>st</sup> April 18 – 31<sup>st</sup> March 2019. **2 of these properties** were in the Kesgrave and Martlesham area, which represents **0.2% of the lets**



### Homelessness

1,852 people presented to the council for initial advice between 1<sup>st</sup> April 2018 – 31<sup>st</sup> March 2019. (72 people have presented from neighbouring Authorities). **37** of these people were from the Kesgrave and Martlesham area, which represents **2% of the total presentations**



# Housing Living environment



2,580

houses in poor condition;  
18.8% of all houses

Lowest CP: Felixstowe 18.3%  
Highest CP: Framlingham &  
Wickham Market 44.0%

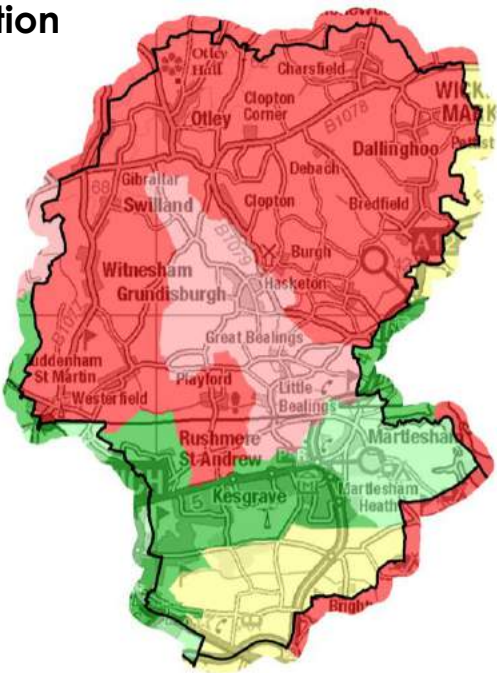
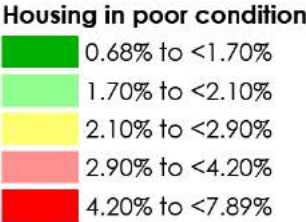


190

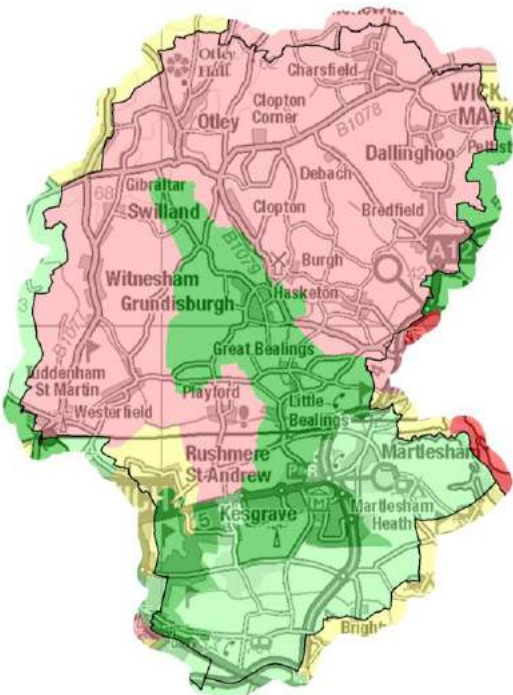
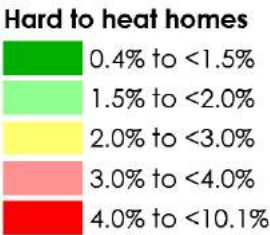
hard to heat homes;  
1.4% of all houses

Lowest CP: Kesgrave & Martlesham 1.4%  
Highest CP: Lowestoft 3.7%

## Housing in poor condition (IMD indicator)



## Hard to heat homes (IMD indicator)





# Environment

## Air quality and attitudes towards climate change



**35.0%** would make compromises to help the environment (UK 34.8%)



**10.3%** do not buy something if it has too much packaging (UK 10.6%)



**79.6%** recycle items rather than throwing away (UK 73.8%)

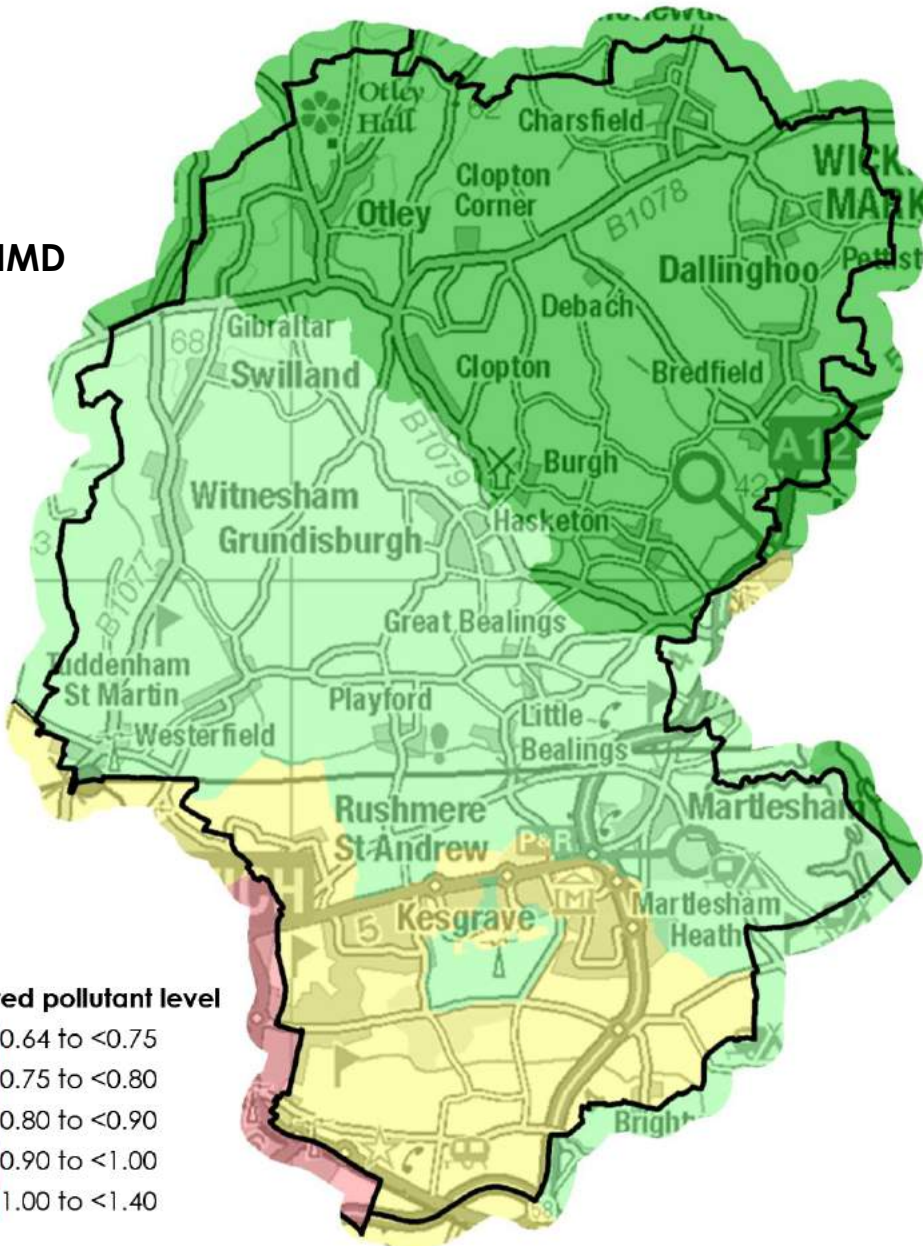
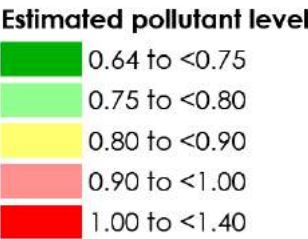


**65.3%** make effort to cut down on water usage (UK 60.7%)



**47.7%** have a reasonable knowledge of climate change (UK 45.6%)

Air quality (IMD indicator)



# Community/services Transport



84.9%

of homes are within  
1/4 of a mile of a  
frequent\* bus  
service, the highest  
of any CP

Lowest CP: Framlingham &  
Wickham Market 38.3%  
Highest CP: Kesgrave,  
Martlesham & villages 84.9%

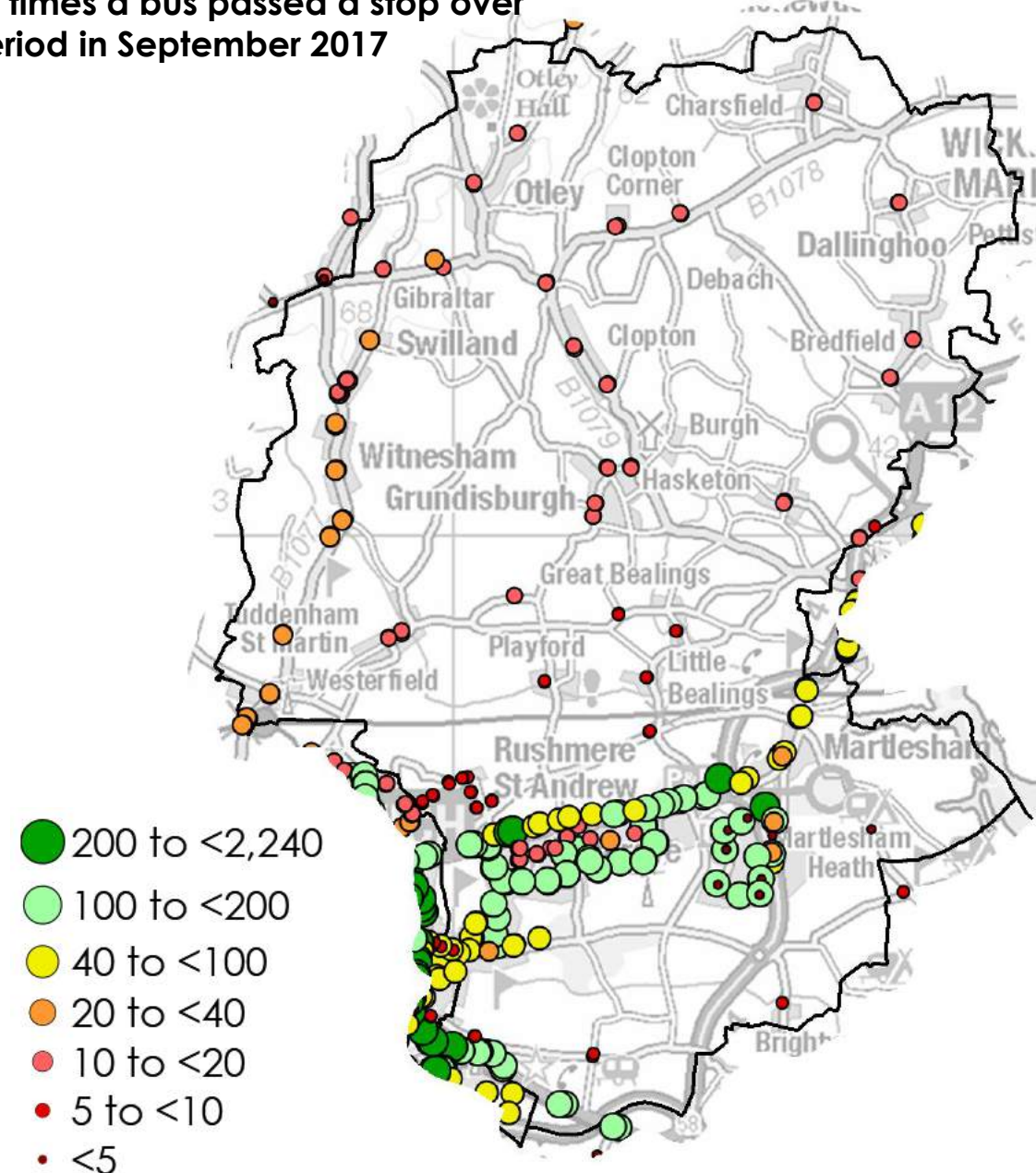


0%

of homes are more  
than 2 miles from a  
frequent\* bus  
service, the lowest  
of any CP

Lowest CP: Kesgrave,  
Martlesham & villages 0.0%  
Next highest CP:  
Framlingham & Wickham  
Market: 20.8%

Number of times a bus passed a stop over  
a 3 day period in September 2017



# Population by Parish

Parish name	Population
Kesgrave	14,830
Rushmere St. Andrew	6,330
Martlesham	5,710
Purdis Farm	2,150
Grundisburgh + Culpho	1,640
Witnesham	830
Otley	710
Little Bealings	470
Westerfield	460
Hasketon	440
Clopton	370
Charsfield	360
Tuddenham St. Martin	350
Bredfield	330
Great Bealings	280
Playford	260
Burgh	190
Dallinghoo	190
Foxhall + Brightwell	190
Swilland	160
Debach + Boulge	120

# Cost of Living

## Financial Inclusion Officer referrals

14 referrals for our Community Partnership area

- 7 closed, 7 currently open as of 25/4/23
- 1x change of circumstance
- 2x referred by Citizens Advice Bureau
- 1x already working with CAB
- 2x did not engage
- 5x given information and advice as required.

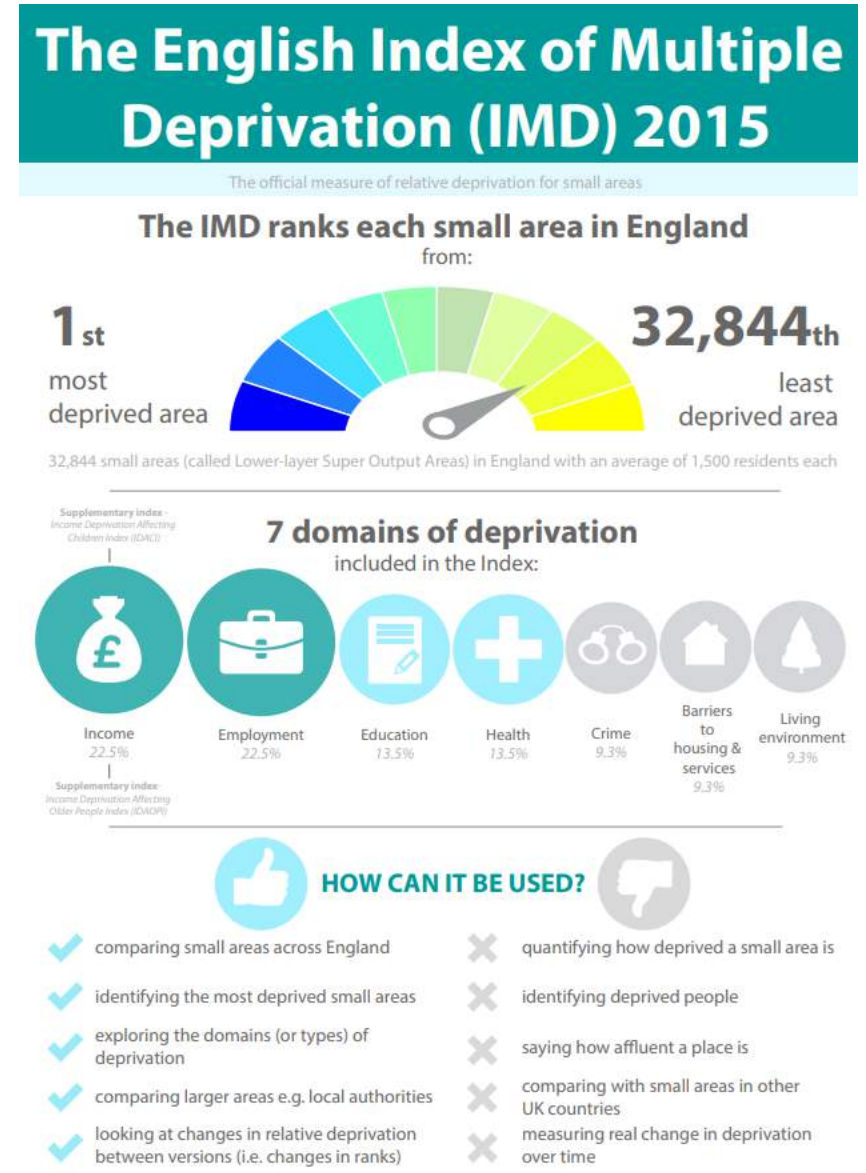
CP Area	Number of referrals
Lowestoft	178
Carlton Colville, Kessingland...	34
Beccles, Bungay and Halesworth	54
Framlingham and villages	13
Leiston, Aldeburgh and Saxmundham	33
Woodbridge and Deben Peninsula	24
Felixstowe and villages	46



# Index of Multiple Deprivation Summary

IMD provide a set of measures of deprivation for LSOAs across England, based on seven different domains;

1. Income deprivation (22.5%)
2. Employment deprivation (22.5%)
3. Education, Skills and Training deprivation (13.5%)
4. Health deprivation and Disability (13.5%)
5. Crime (9.3%)
6. Barriers to Housing and Services (9.3%)
7. Living Environment deprivation (9.3%)



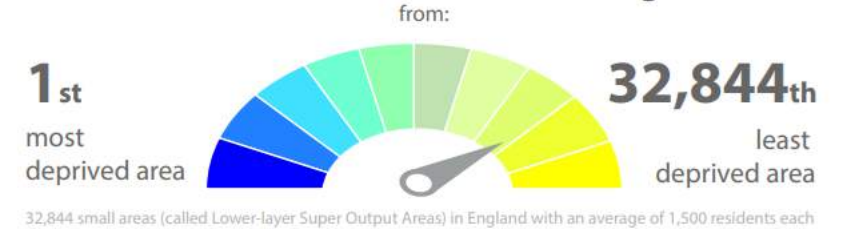
# Index of Multiple Deprivation Summary

Code	Location	Ward	IMD Decile (10 = least deprived)
010C	Old Martlesham	Martlesham	9
010D	Martlesham Heath North	Martlesham	9
010E	Martlesham Heath South	Martlesham	10
011B	Foxhall and Brightwell	Martlesham	8
011A	Purdis Farm	Martlesham	9
011E	Foxhall Road South - RSA	Rushmere St Andrew	10
011C	RSA Golf Course to Foxhall Road	Rushmere St Andrew	10
011D	RSA Tower East	Rushmere St Andrew	10
009D	Kesgrave Heath Primary and Bell Lane	Kesgrave	7
009C	Kesgrave West including Penzance Road	Kesgrave	10
009E	RSA Village	Rushmere St Andrew	7
009B	Kesgrave including High School	Kesgrave	10
009A	Kesgrave Central including Cedarwood	Kesgrave	10
010H	Kesgrave Central South	Kesgrave	10
010A	Kesgrave Central Alice Grange and Farmhouse	Kesgrave	9
010G	Kesgrave South East	Kesgrave	9
010I	Kesgrave East including Gorseland Primary	Kesgrave	10
006C	Witnesham, Tuddenham and Westerfield	Carlford and Fynn Valley	6
006A	Bealings x2 and Grundisburgh	Carlford and Fynn Valley	9
006B	Otley, Clopton, Debach, Boulge, Hasketon, etc	Carlford and Fynn Valley	7

## The English Index of Multiple Deprivation (IMD) 2015

The official measure of relative deprivation for small areas

### The IMD ranks each small area in England



### 7 domains of deprivation

included in the Index:



### HOW CAN IT BE USED?



- |   |  |
|---|--|
| ✓ comparing small areas across England  | ✗ quantifying how deprived a small area is         |
| ✓ identifying the most deprived small areas   | ✗ identifying deprived people                      |
| ✓ exploring the domains (or types) of deprivation                                     | ✗ saying how affluent a place is                   |
| ✓ comparing larger areas e.g. local authorities                                       | ✗ comparing with small areas in other UK countries |
| ✓ looking at changes in relative deprivation between versions (i.e. changes in ranks) | ✗ measuring real change in deprivation over time   |

*Income, employment, education/skills, health/disability, crime, barriers to services, living environment*

# Anti Social Behaviour per Local Super Output Area

## March 2022 – Feb 2023

LSOA's provide very local data and insight, allowing us to draw attention to specific areas or groups of people. Each LSOA can be found [here](#).

		ASB per yr
010C	Martlesham Village	42
010D	Martlesham Heath North	7
010E	Martlesham Heath South	5
011B	Foxhall and Brightwell	27
011A	Purdis Farm	8
011E	Foxhall Road South - RSA	4
011C	RSA Golf Course to Foxhall Road	26
011D	RSA Tower East	3
009D	Kesgrave Heath Primary and Bell Lane	15
009C	Kesgrave West including Penzance Road	5
009E	RSA Village	6
009B	Kesgrave including High School	6
009A	Kesgrave Central including Cedarwood	23
010H	Kesgrave Central South	11
010A	Kesgrave Central Alice Grange and Farmhouse	5
010G	Kesgrave South East	7
010I	Kesgrave East including Gorseland Primary	6
006C	Witnesham, Tuddenham and Westerfield	7
006A	Bealings x2 and Grundisburgh	8
006B	Otley, Clopton, Debach, Boulge, Hasketon, etc	6
<b>Average</b>		<b>11</b>

# Road Safety Data via Suffolk Road Safe

199 accidents in East Suffolk – minor, severe and fatal

Breakdown of vehicles involved	
Cars	70%
Motorbikes	10%
Cyclists	8%
Pedestrians	7%
LGVs	3%
HGV	2%

24% of all casualties were aged between 15 and 24 years old. However, this number has been declining for the last 10 years.

The number of casualties aged 65 and over has remained constant during the same time period.

Approximately double the number of accidents occur during the summer months compared to winter.

Regarding motorcycle accidents, 31% of casualties are aged between 15 and 19.

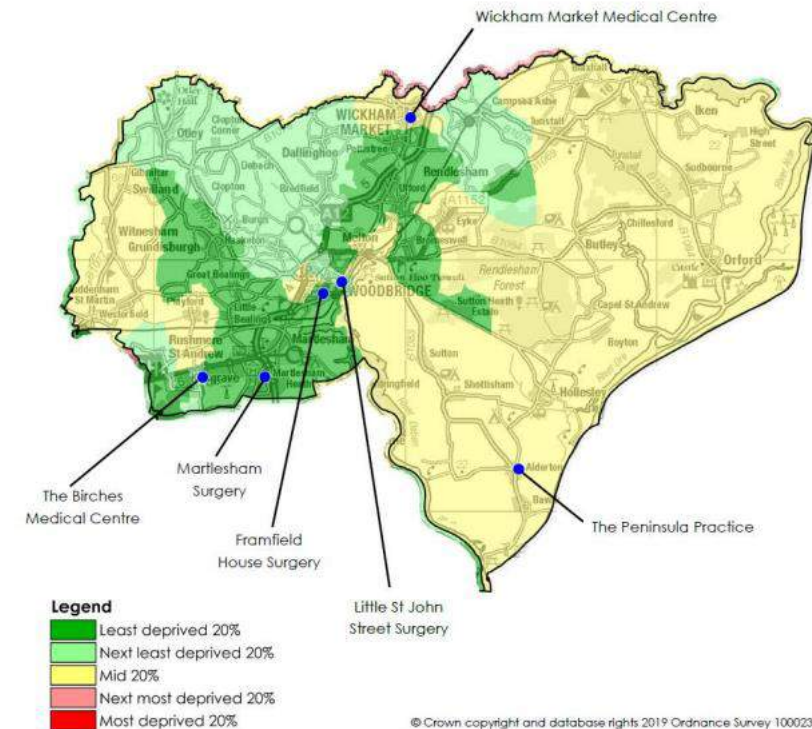


# Integrated Healthcare Team – Woodbridge area

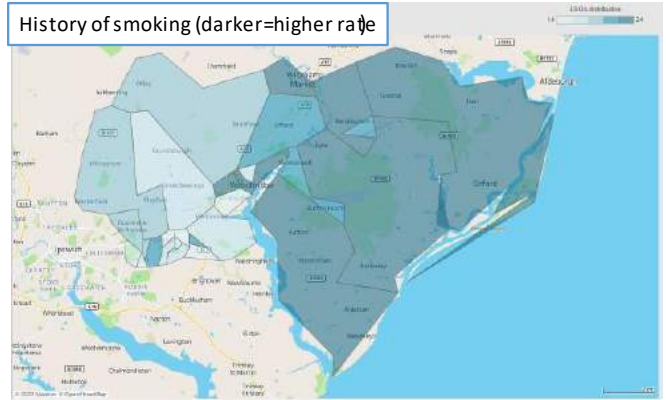
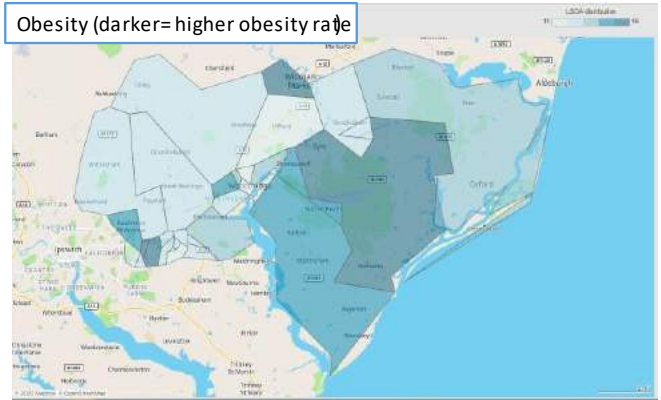
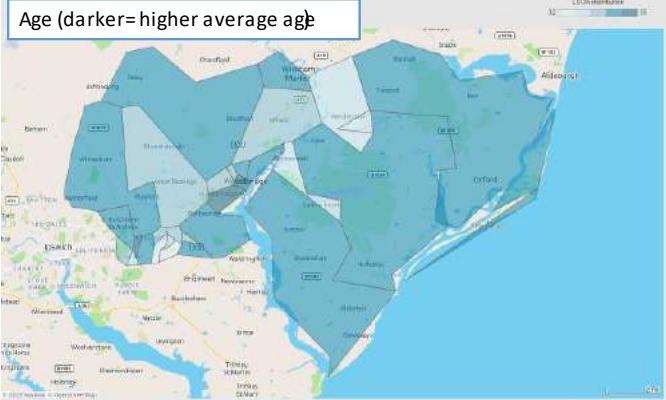
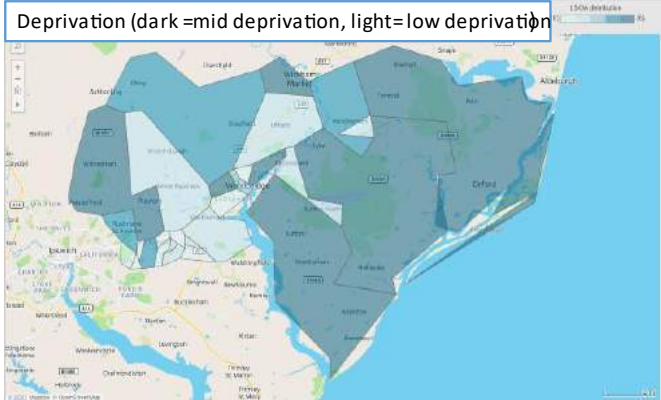
Issues most likely to lead to an A&E visit amongst our area – substance misuse/alcohol and being housebound.

Linked conditions – x% of patients have both of the following conditions;

- Dementia and hypertension – 94%
- Serious mental illness and depression – 58%
- Anxiety and depression – 59%
- Diabetes and hypertension – 57%
- CPD and hypertension – 56%

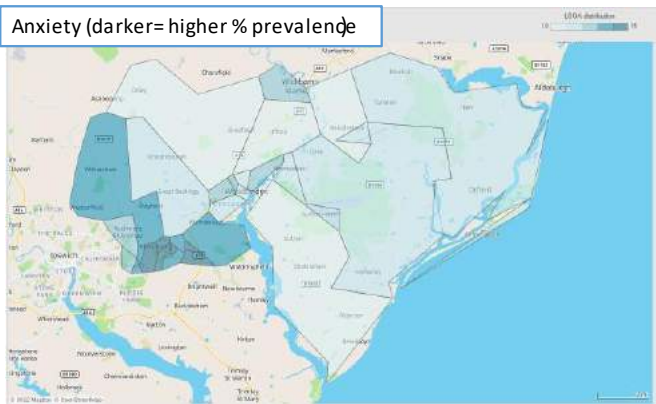


Mapping also allows us to look at wider determinants of health that are associated with poorer outcomes, and what that looks like across the INT

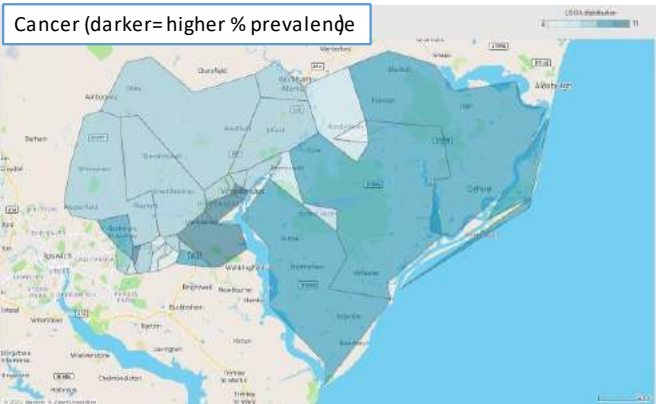


Additionally we can look at prevalence of some of the conditions we looked at earlier across the INT

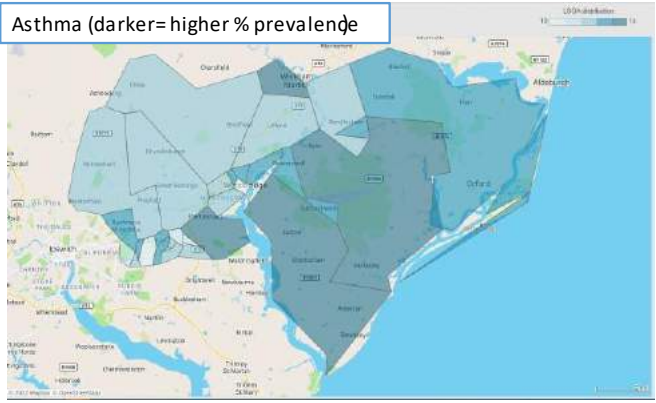
Anxiety (darker= higher % prevalence)



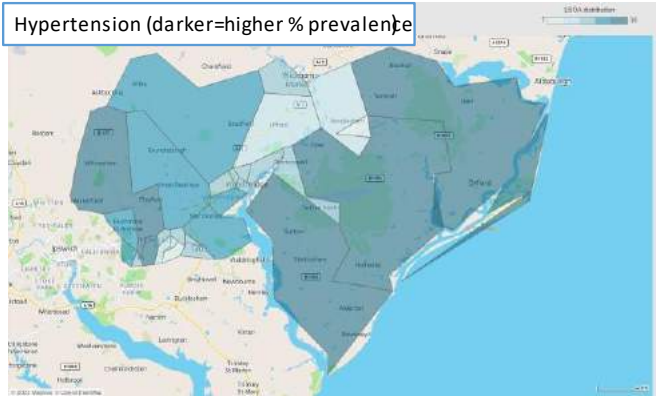
Cancer (darker= higher % prevalence)



Asthma (darker= higher % prevalence)



Hypertension (darker= higher % prevalence)



# Youth Voice

# Survey Respondents

- **645 responses**, made up of young people in and around the Woodbridge area.
- Most responses came from Farlingaye High School
- Respondents were aged between Year 7 and Year 13

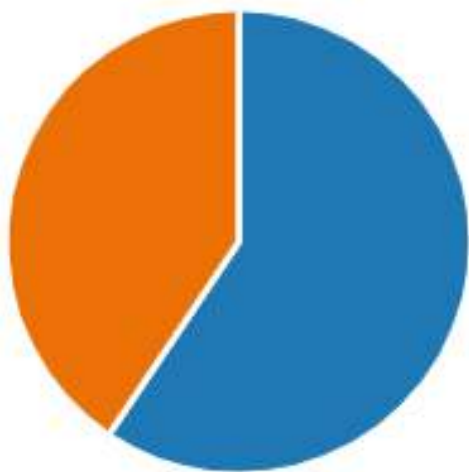


# Activities

Is there enough to do locally?

Yes = 59%

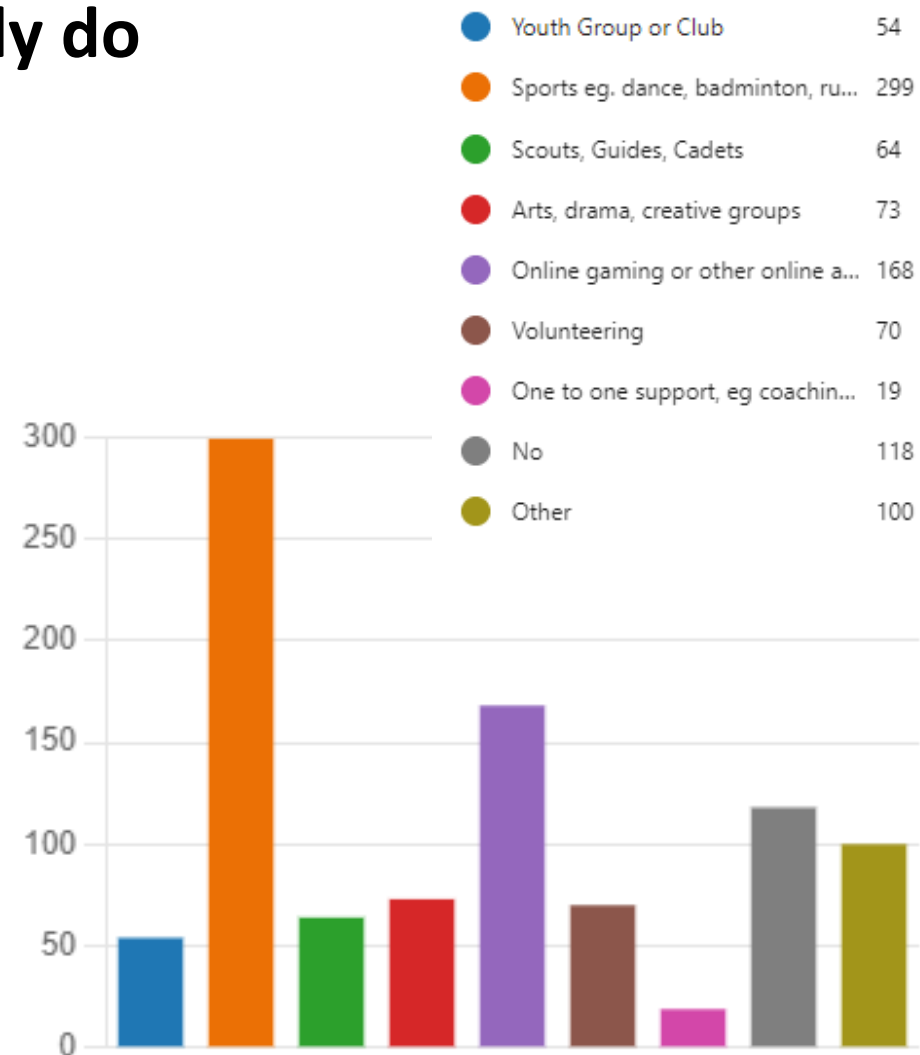
No = 41%



## Activities YP currently do

1. Sports activities (299)
2. Online activities (168)
3. "None" (118)
4. Other (100):

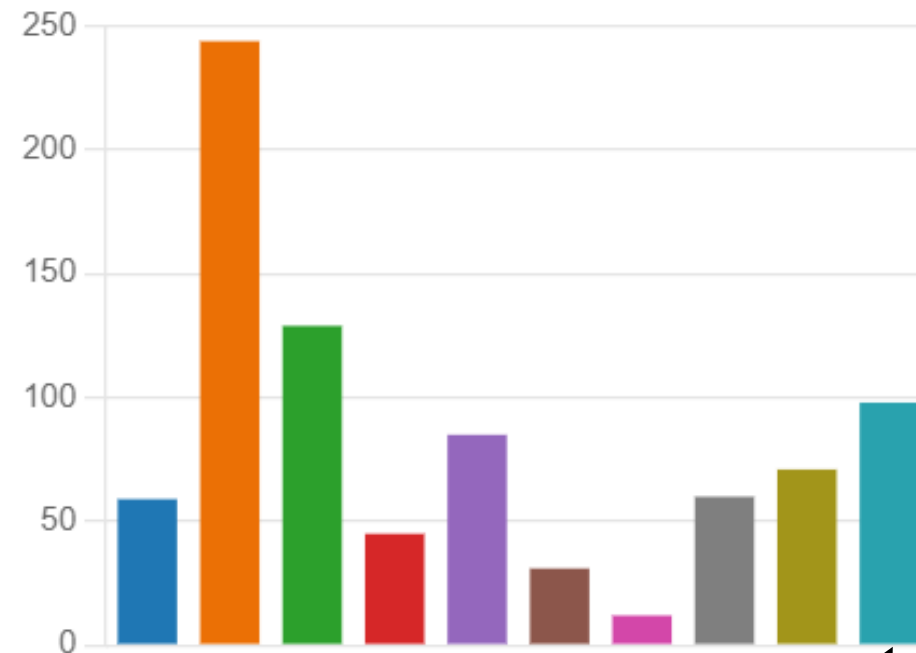
- Work
- Fitness related
- Spend time with friends
- "I do nothing"



# Activities

## Activities young people would be interested in

1. Sports activities (244)
2. Arts, drama, creative groups (129)
3. Other (98)
4. Volunteering (85)
5. Digital technology activities (71)
6. Outdoor venues (60)



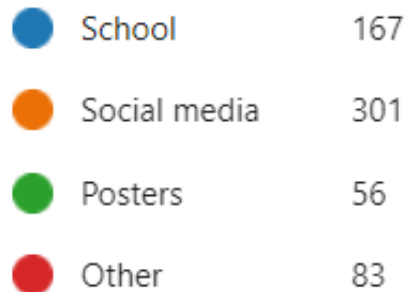
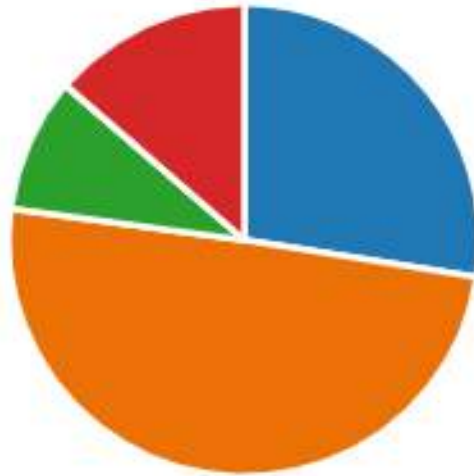
“Other” suggestions included:

gym / fencing / trampolining / boxing, music related, art / painting / graphic design, a space inside with no adults



# Activities

**Best way to find out about activities**



**Which social media platforms?**

Instagram (338)

Snapchat (252)

Facebook (98)

Twitter (54)



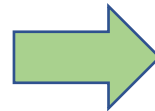
# What's Needed?

## Barriers to taking part in activities

34% said they're not interested in what's available  
20% said they're at the wrong time of day  
16% said they're too expensive  
14% don't have transport to the activities

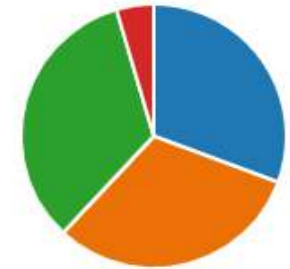
15% said 'other', which included:

- Not knowing what is available
- "I can talk to my friends at home"
- Busy with schoolwork / not enough time
- Health / mental health
- Family issues



## When's the best time for activities?

Weekends (324)  
Evenings (303)  
After school (297)



## Where would you like activities?

Local activities I can walk or bike to (336)  
Doesn't matter, I can get a lift (293)  
Something in a bigger town with a bus (91)

# What's Needed?

**What other support young people would like to see available**

School therapists / counsellors

Emotional wellbeing

Free after school clubs

Clubs for people with autism

More careers advice and how to apply for things (like uni)

Support for people struggling with their own issues

LGBTQ+

Mental health support that is easy to access

Cooking club, acting, music, choir, photography

A person to talk to

Friends

Free food / hot dinners

Rugby and basketball clubs

# Key Takeaways and Recommendations

## Key takeaway points

### Prominent issues:

Young people are struggling severely with mental health and wellbeing so further support around this is essential. Many young people said they felt the activities they were already participating in supported them to feel better, therefore, any further activities or provisions will be vital in supporting young people.

### New activities:

Young people have identified that there are gaps in provision around the following areas:

- Arts and creative groups
- LGBTQ+ support
- Counselling / mental health support
- Digital technology related activities

### Promoting activities:

Young people seemingly are not always aware of the activities and provisions available for them to join, so further work needs to be done on promoting existing activities through social media, schools, parents and posters in the local community. Any new activities/provisions would also benefit from being promoted in a similar way.

### Where, When, Cost:

It is important that, where possible, activities are subsidised so that they are free for young people.

Although many young people are currently able to get a lift to activities, to ensure longevity, local activities are preferable so that young people can independently attend activities.

It's important that activities are available after school, in the evening and weekends.

Melton, Woodbridge,  
Deben Peninsula CP

## Young Person Survey - Results



**East Suffolk  
Rural Youth  
Project**

AT COMMUNITY ACTION SUFFOLK

# What will be covered:

- Survey respondents
- Activities
- Venues and locations
- What's needed?
- Key takeaways and recommendations



# Survey Respondents

- **645 responses**, made up of young people in and around the Woodbridge area.
- Most responses came from Farlingaye High School
- Respondents were aged between Year 7 and Year 13



# Activities

Is there enough  
to do locally?

Yes = 59%

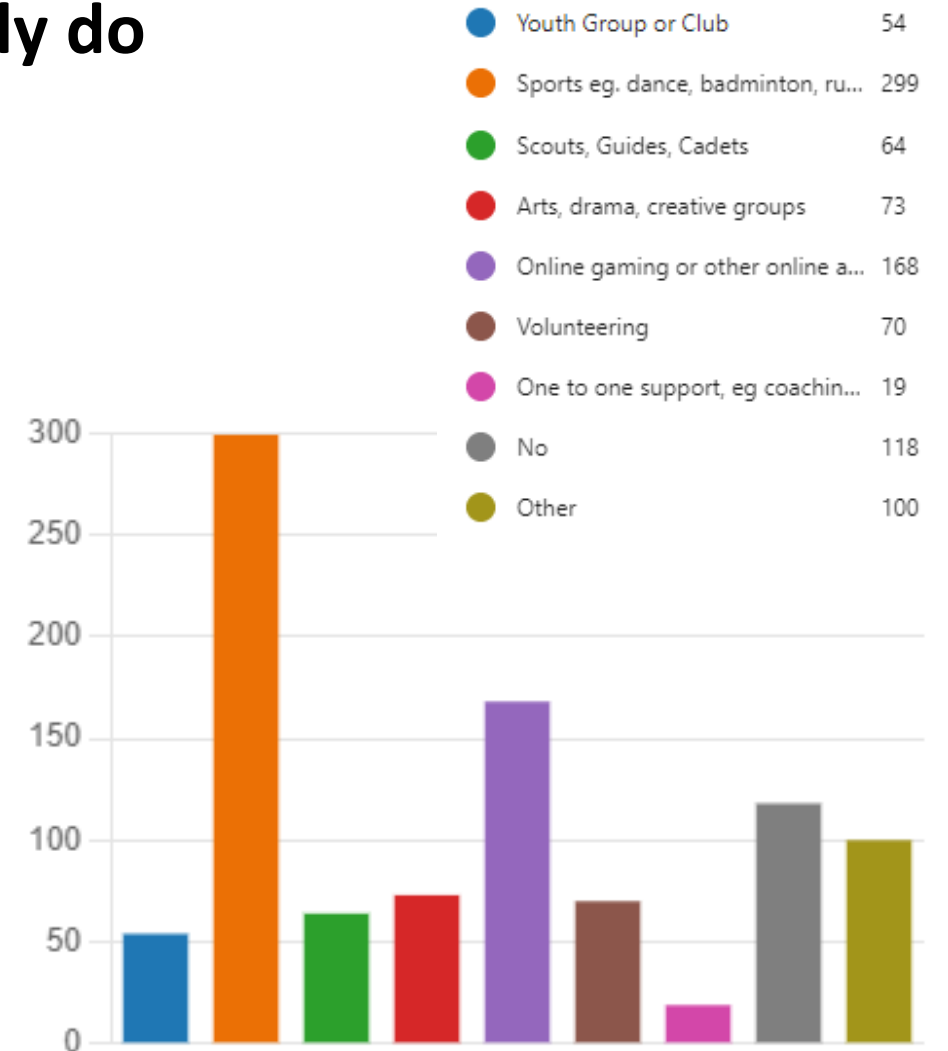
No = 41%



## Activities YP currently do

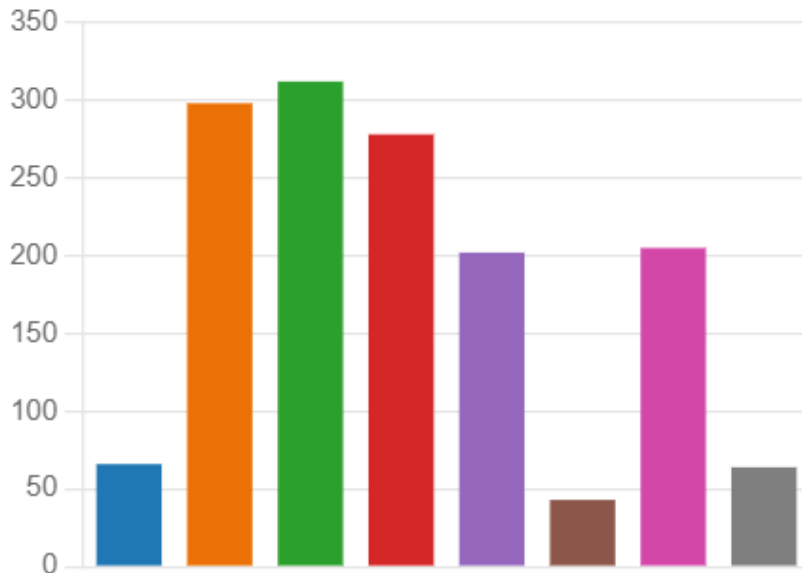
1. Sports activities (299)
2. Online activities (168)
3. “None” (118)
4. Other (100):

- Work
- Fitness related
- Spend time with friends
- “I do nothing”



# Activities

## How these activities help young people



Give them something to do in their spare time (312)

Helps them keep fit and healthy (278)

Helps them feel better / improve wellbeing (202)

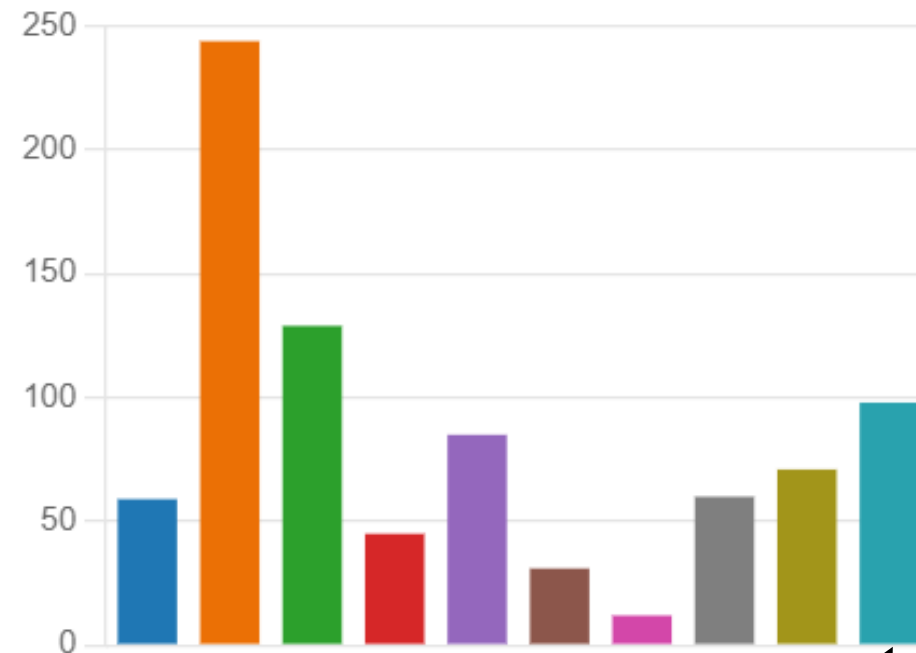
Give them a chance to be with friends / make new friends (298)

Gives them a chance to unwind and relax (205)

# Activities

## Activities young people would be interested in

1. Sports activities (244)
2. Arts, drama, creative groups (129)
3. Other (98)
4. Volunteering (85)
5. Digital technology activities (71)
6. Outdoor venues (60)



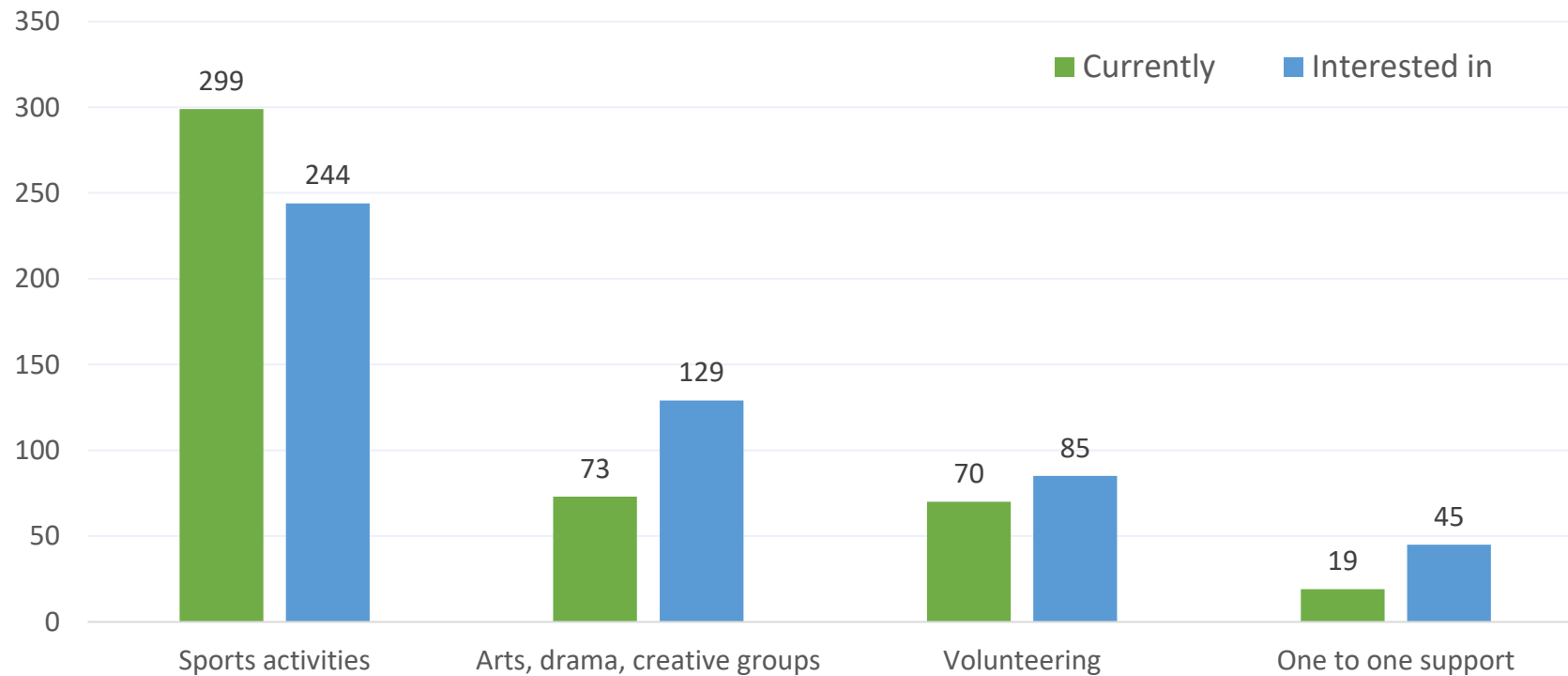
“Other” suggestions included:

gym / fencing / trampolining / boxing, music related, art / painting / graphic design, a space inside with no adults

# Activities

## Comparing and identifying gaps:

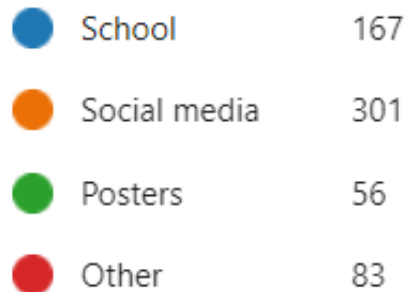
What young people are currently doing vs what young people would be interested in





# Activities

**Best way to find out about activities**



**Which social media platforms?**

Instagram (338)

Snapchat (252)

Facebook (98)

Twitter (54)

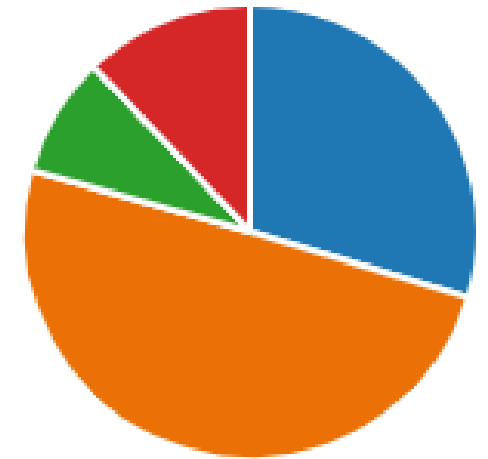
# Venues and Locations

## Where young people are spending time outside of school

- “Town”
- Round friend’s houses
- Parks
- Woodbridge / Rendlesham / Ipswich

## How do you get to any activities you do?

- Lift from someone (395)
- Walk or bike (236)
- Catch a bus, train or taxi (68)
- Other (96):
  - Motorbike / moped
  - I stay at home / don’t do any activities



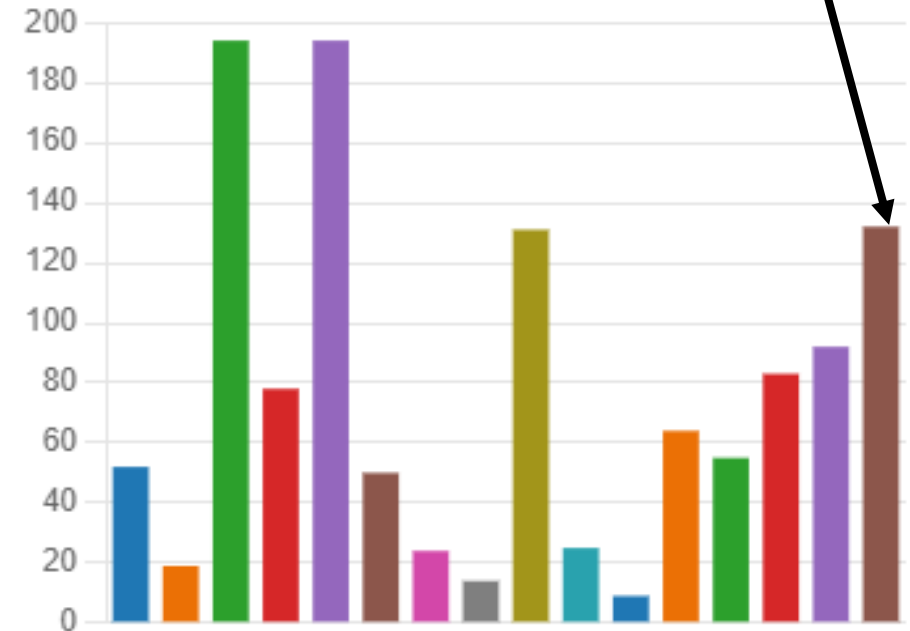
# What's Needed?

## Issues affecting young people

- Mental health and wellbeing / Coping with stress
- What to do after leaving school (work, education, training)
- Money management
- Loneliness or isolation
- Bullying and making friends
- Transport
- Sexual health and relationships
- Drugs and alcohol
- Gender identity
- Young carers
- Racism
- Gangs, knives and crime
- Homelessness
- Leaving care

“other”:

- No issues
- Friendship problems
- Family problems
- School issues
- LGBTQ+



**Current support networks:** for support on these issues, most young people would go to their parents or carers (325) or friends (274). Beyond this, young people would go to the following places: not sure(104), other (76), school (80), online (51), youth club (12).

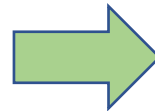
# What's Needed?

## Barriers to taking part in activities

34% said they're not interested in what's available  
20% said they're at the wrong time of day  
16% said they're too expensive  
14% don't have transport to the activities

15% said 'other', which included:

- Not knowing what is available
- "I can talk to my friends at home"
- Busy with schoolwork / not enough time
- Health / mental health
- Family issues



## When's the best time for activities?

Weekends (324)  
Evenings (303)  
After school (297)



## Where would you like activities?

Local activities I can walk or bike to (336)  
Doesn't matter, I can get a lift (293)  
Something in a bigger town with a bus (91)

# What's Needed?

**What other support young people would like to see available**

School  
therapists /  
counsellors

Emotional  
wellbeing

Free after  
school  
clubs

Clubs for  
people with  
autism

More careers  
advice and  
how to apply  
for things  
(like uni)

Support for  
people  
struggling  
with their  
own issues

LGBTQ+

Mental health  
support that  
is easy to  
access

A person  
to talk to

Friends

Free food  
/ hot  
dinners

Cooking  
club, acting,  
music, choir,  
photography

Rugby and  
basketball  
clubs



# Key Takeaways and Recommendations

## Key takeaway points

### Prominent issues:

Young people are struggling severely with mental health and wellbeing so further support around this is essential. Many young people said they felt the activities they were already participating in supported them to feel better, therefore, any further activities or provisions will be vital in supporting young people.

### New activities:

Young people have identified that there are gaps in provision around the following areas:

- Arts and creative groups
- LGBTQ+ support
- Counselling / mental health support
- Digital technology related activities

### Promoting activities:

Young people seemingly are not always aware of the activities and provisions available for them to join, so further work needs to be done on promoting existing activities through social media, schools, parents and posters in the local community. Any new activities/provisions would also benefit from being promoted in a similar way.

### Where, When, Cost:

It is important that, where possible, activities are subsidised so that they are free for young people.

Although many young people are currently able to get a lift to activities, to ensure longevity, local activities are preferable so that young people can independently attend activities.

It's important that activities are available after school, in the evening and weekends.

# Key Takeaways and Recommendations

## Recommendations / Proposals – Mental Health and Wellbeing

### Counselling:

4YP offers links with, and combines, all the elements of work that is carried out by the 4YP team. It is a confidential service for young people who are ready to enter one-to-one sessions focusing on difficult issues with a trained counsellor.

One to one counselling for two days a month in School for one academic year.

**Cost: £6000**

### LGBTQ+ Support:

Outreach Youth. We see Youth Work as a distinct educational practice founded on a voluntary relationship with young people and shaped by their agendas. This funding will provide support LGBTQ+ in school for young people and in addition a training session for parents and school staff around the language of LGBTQ+. Our four pillars of youth work are:

**EMPOWERMENT** is enabling young people to take responsibility and helping them to make decisions about their whole life. **EQUALITY** is about a person's free involvement in an activity or group based on the absence of discrimination of any kind. **EDUCATION** is the gradual process of acquiring knowledge: "education is a preparation for life." **PARTICIPATION** means that "it is my right to be involved in making decisions, planning and reviewing an action that might affect me. Having a voice, having a choice." – Young Person

**Cost: £3000**

### Compass Mentoring:

Just 42 Compass mentoring is well-being mentoring for young people aged 11 to 18 years of age, who are struggling with a variety of issues and who are without support of any kind or who has some statutory support, but this is not really working. This will be an extension of the service that Just 42 already offers because they have had such an increase in referrals that there is a need in an increase of this service.

**Cost: £5000**

# Key Takeaways and Recommendations

## Recommendations / Proposals – New Provision

### Arts and Craft Lunch Club:

Just 42 drop-in sessions lunch time in School one day a week. Will provide quiet space for young people to participate in arts and crafts. Involvement with arts and crafts can help self-esteem and confidence, aids imagination, self-expression and creativity in young people.

**Cost: £3000**

### Creative Sessions:

Just 42 Mend Sessions will run after school during the spring/summer term. Workshops will teach young people how to repair bikes, sewing skills, carpentry, upcycling furniture etc. This teaches young people life skills which boosting their confidence and ultimately their wellbeing.

**Cost: £3000**

### Digital Technology:

Farlingaye High School offers a few existing technology related lunch clubs and activities. Further work will be done with the school to explore additional activities relating to digital technology to aim to fill the gap in provision identified by young people.

**Cost: TBC in Spring 2023**