

Priorities review

Key questions and suggestions:

- Retain Transport and Mental Health as priorities
- Remove 'Support for Volunteers' as a cross cutting theme
- All projects for all priorities must be 'cost of living proofed' to ensure they were low/no cost and accessible
- Does the CP want to add environmental care as a priority?
- What best to do with regard to the intergenerational skills exchange priority?

Current priorities:

- 1 Transport (especially around health appointments & isolated communities)
 - Increase available transport services, and increase uptake of existing services, specifically around health appointments and isolated communities.
- 2 Mental health (all ages) – links to lack of physical activities available
 - Improve the offering of existing physical activities and create new opportunities based on identified gaps in provision which support an individual's mental health
- 3 Intergenerational skills exchange (Men's Sheds, sports, allotments & arts)
 - Create a local network of intergenerational skills exchange groups, including building on existing assets.
- 4 Support for Volunteers (Cross-Cutting Theme)

Points and suggestions from conversations already

- **Retain Transport and Mental Health as priorities**
- At the last meeting, it was noted that volunteering was slightly out of the remit of the CP and better led by other groups who had better resources – **remove 'Support for Volunteers' as a cross cutting theme**
- Two issues were raised at the workshop in July: cost of living and environmental issues; **Suggested at last meeting that all projects for all priorities must be 'cost of living proofed' to ensure they were low/no cost and accessible**
- Raised that intergenerational skills exchange might need a different focus; maybe keeping the focus on skills sharing but losing intergenerational reference – **suggestion below**
- Raised that environment should be added as a priority

Environment as a priority

Some context

- Suffolk Nature Strategy

- New duties (strengthened 'biodiversity duty') under the Environment Act – *'Environment Act Public authorities who operate in England must consider what they can do to **conserve and enhance biodiversity** in England'*
 - Ask parish and town councils to look at their operations and review things like what chemicals contractor are using

Example from another CP – Kesgrave CP

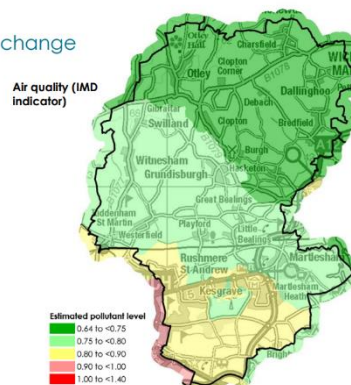
- Have Environmental Care as a priority
- Main focuses seem to be/have been:

- Rewilding and wildflowers

- Advice about what residents could do to contribute to environmental care

- Supporting towns/parishes to have an environmentally focussed project

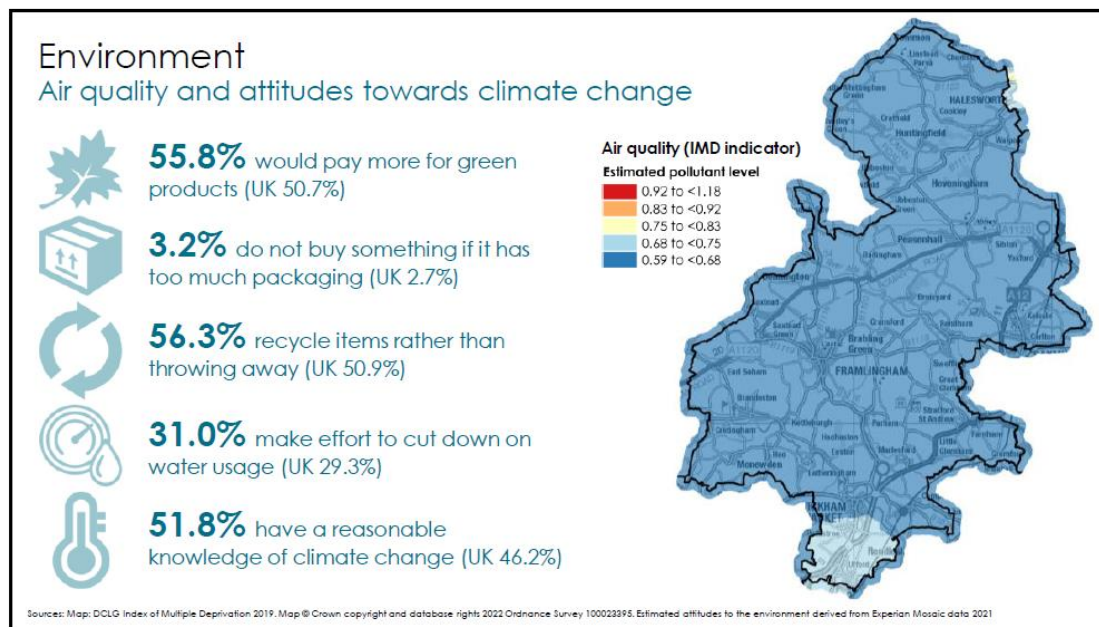
Environment Air quality and attitudes towards climate change



Sources: DCLG Index of Multiple Deprivation 2019. Map © Crown copyright and database rights 2019 Ordnance Survey 100023395. Estimated attitudes to the environment derived from Experian Mosaic data 2018

Data for our area

From the data pack (IMD data 2019):



[Transport East's rural mobility survey dashboard](#) (end of 2022):

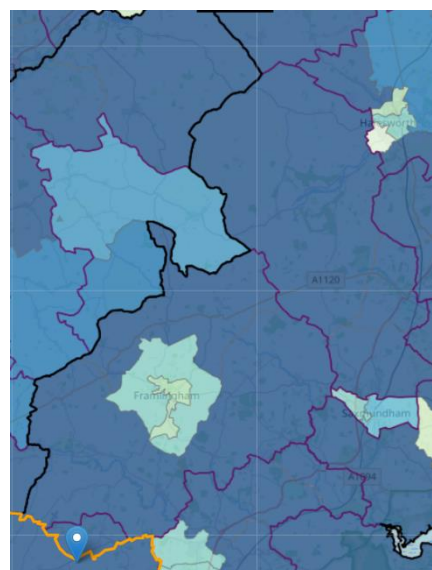
Questions included "are there opportunities for public / community charging for EV vehicles?" and "please rate level of parish support for achieving net zero"

Village	Are there opportunities for public / community charging for EV vehicles?	Please rate level of parish support for achieving net zero	Village	Opportunities for EV vehicles	Support for net zero
Badingham	N	2	Heveningham	N	3
Campsea	Y	4	Ubbeston	N	3
Chediston	N	1	Marlesford	Y	3
Cookley	N	1	Parham	N/A	2
Cretingham	N	3	Rendham	N	3
Monewden	N	3	Saxstead	N	3
Hoo	N	3	Ufford	Y	3
Dennington	N	3	Wickham Market	Y	4
Hacheston	N	3	Yoxford	Y	1

- 18 responses from our 38 parishes (47.4%)
- Average 2.6
- 5 yeses from 18 responses on EV – 28%

Living Environment Deprivation Domain 2019:

- The Living Environment Deprivation Domain measures the quality of the local environment. The indicators fall into two sub-domains. The 'indoors' living environment measures the quality of housing; while the 'outdoors' living environment contains measures of air quality and road traffic accidents. It is one of seven domains that combine to produce the overall Index of Multiple Deprivation.
- Most of our patch is in the 10% most deprived areas in England on this factor



Co-op Wellbeing score:

Data sources collated and local areas given a score for different categories. One category is 'Housing, space and environment' which is defined as 'Affordable, secure, quality housing, a safe and clean surrounding environment, and well-kept, accessible and inclusive public spaces for people of all ages'. UK average is 55 and a higher number denotes more evidence of quality housing, safe and clean environment and well kept spaces.

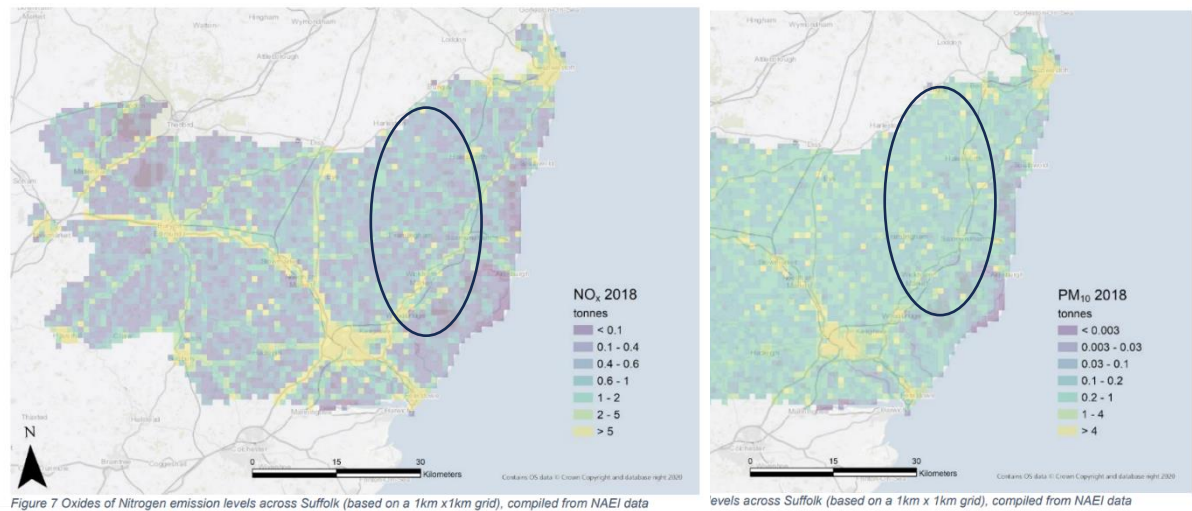
Village	Score	Village	Score
Yoxford	62	Bruisyard	63
Wickham Market	63	Linstead Parva	36

Petistree	50	Chediston	47
Ufford	74	Walpole	50
Lower Hacheston	50	Huntingfield	57
Campsea Ashe	65	Heveningham	54
Marlesford	63	Sibton	58
Little Glenham	57	Peasenhall	51
Stratford St Andrew	59	Rendham	76
Farnham	77	Sweffling	77
Framlingham	61	Great Glenham	73
Dennington	61	Ubbeston	49
Badingham	44	Cratfield	57

Suffolk Air Quality Profile June 2021:

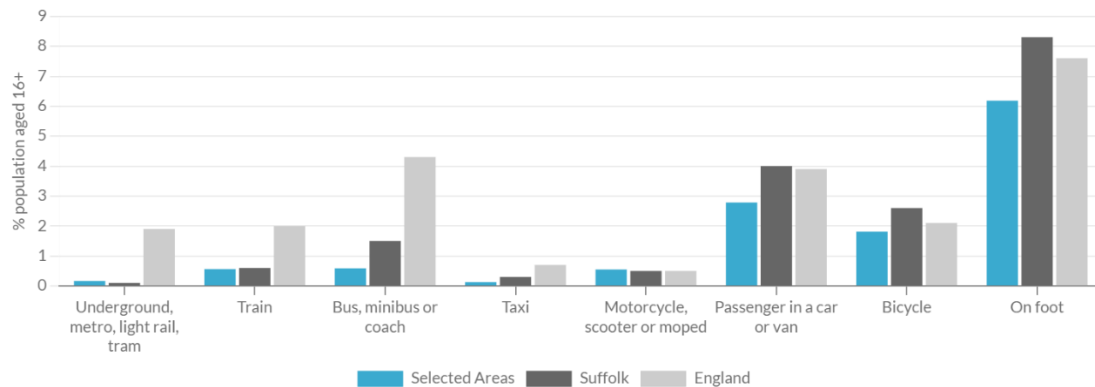
<https://www.healthysuffolk.org.uk/asset-library/Suffolk-Air-Quality-Profile.pdf>

The UK compiles and reports an annual air pollutant emissions inventory known as the National Atmospheric Emissions Inventory (NAEI) (19). This provides a database of national emissions estimates for air pollutants and greenhouse gases. This data has been used to provide maps of air pollutant emissions and air pollutant concentrations across Suffolk based on a 1kmx1km grid. Figure 7 shows the modelled emissions of oxides of nitrogen (NOx) across Suffolk with the highest emissions clearly following the major transport routes. Figure 8 shows the modelled emissions of Particulate Matter (PM10) across Suffolk with highest emissions mainly based in the larger towns and following the path of the A14: a major connective road across the county.



Suffolk Observatory – The areas selected in this report are: [Framlingham](#), [Kelsale & Yoxford](#), [Wickham Market](#):

Other methods of travel to work (2021)



- Travelling by foot to work, being a passenger and cycling were most other methods to travel to work outside driving

Anecdotal evidence

Flooding:

- In engagement in the aftermath of the floods across the patch, a common theme with affected residents was an anger about rivers not being dredged, drains not being unblocked and silt being allowed to collect over time – a theme of how caring for the environment earlier on would have avoided or reduced the impact of the floods
- At Youth Take Over Day 2023, students from Thomas Mills school spoke about their experiences in the floods and how they wanted to see agencies do more to avoid this happening again

Mentions of environment in Neighbourhood Plans:

- Easton NP:
 - 'Our vision for Easton is to have a thriving and vibrant community, accepting organic growth to its housing and population, whilst keeping its rural and historic character, **its valued green spaces, natural environment**, safe roads, and avoidance of light pollution for its natural dark skies.'
- Ufford NP:
 - Mention of green spaces and the natural environment
- Framlingham NP:
 - Vision: The **green environment** has been further extended and enhanced, framing all new developments in managed 'green' spaces. This has served to **increase levels of biodiversity** and has ensured the adequate protection of sensitive areas.
 - Objective Six: Protect green spaces of value to the community and maintain the high quality natural and historic environment.

- Wickham Market NP:
 - Vision and objectives: 4. Maintaining the Green Environment We intend that the village should remain rural, preserve its open landscape, its views and allotments and ensure that its heritage is protected. Our aim is to ensure that any development has adequate landscaping and **green spaces** and does not have a negative impact on our lanes, byways, footpaths and encircling green landscape

Some local assets on the environment:

Wickham Market

- Green Gym
- Allotments
- Gardening club
- Wild about Campsea Ashe
- River water quality testing

Framlingham

- Sustainable Framlingham
- Greener Fram
- Wildflower project

Kelsale and Yoxford

- Saxmundham Community Allotment
- Cookpole Energy Action
- Kelsale school link with Galapagos Conservation Trust: [What Kelsale Primary School learned about Galapagos - Galapagos Conservation Trust](#)

Climate emergency groups in various parishes

Forest schools working with local schools around nature and biodiversity

Reframed priorities

Two options: Which suits better? (highlighted in yellow is the difference between the two suggestions)

1/ Change ISE priority to skills sharing priority with additional priority about environmental care (cross cutting theme)	2/ Make ISE a cross cutting theme priority with 3 rd priority being about environmental care
<p>1 Transport (especially around health appointments & isolated communities)</p> <ul style="list-style-type: none"> • Increase available transport services, and increase uptake of existing services, specifically around health appointments and isolated communities. 	<p>1 Transport (especially around health appointments & isolated communities)</p> <ul style="list-style-type: none"> • Increase available transport services, and increase uptake of existing services, specifically around health appointments and isolated communities.
<p>2 Mental health (all ages) – links to lack of physical activities available</p> <ul style="list-style-type: none"> • Improve the offering of existing physical activities and create new opportunities based on identified gaps in provision which support an individual's mental health 	<p>2 Mental health (all ages) – links to lack of physical activities available</p> <ul style="list-style-type: none"> • Improve the offering of existing physical activities and create new opportunities based on identified gaps in provision which support an individual's mental health

<p>3 Enabling communities to share skills and knowledge around sports and arts</p> <ul style="list-style-type: none"> • Build on existing assets such as Men's Sheds, sports, allotments & arts to provide more opportunities to share skills within communities <p>Facilitate opportunities for local people to care for the environment and biodiversity (cross cutting theme)</p> <ul style="list-style-type: none"> • Connect groups, information and tips with local residents to increase interest in environmental care and care for biodiversity 	<p>3 Facilitate opportunities for local people to care for the environment and biodiversity</p> <ul style="list-style-type: none"> • Connect groups, information and tips with local residents to increase interest in environmental care and care for biodiversity <p>Enabling communities to share skills and knowledge around sports and arts (cross cutting theme)</p> <ul style="list-style-type: none"> • Build on existing assets such as Men's Sheds, sports, allotments & arts to provide more opportunities to share skills within communities and generations
--	--