

WELLINGTON GARDENS



Historic photographs show railings, specimen plants and urns



Current displays are well presented but lack height and seasonal interest



Existing floral clock display to be retained



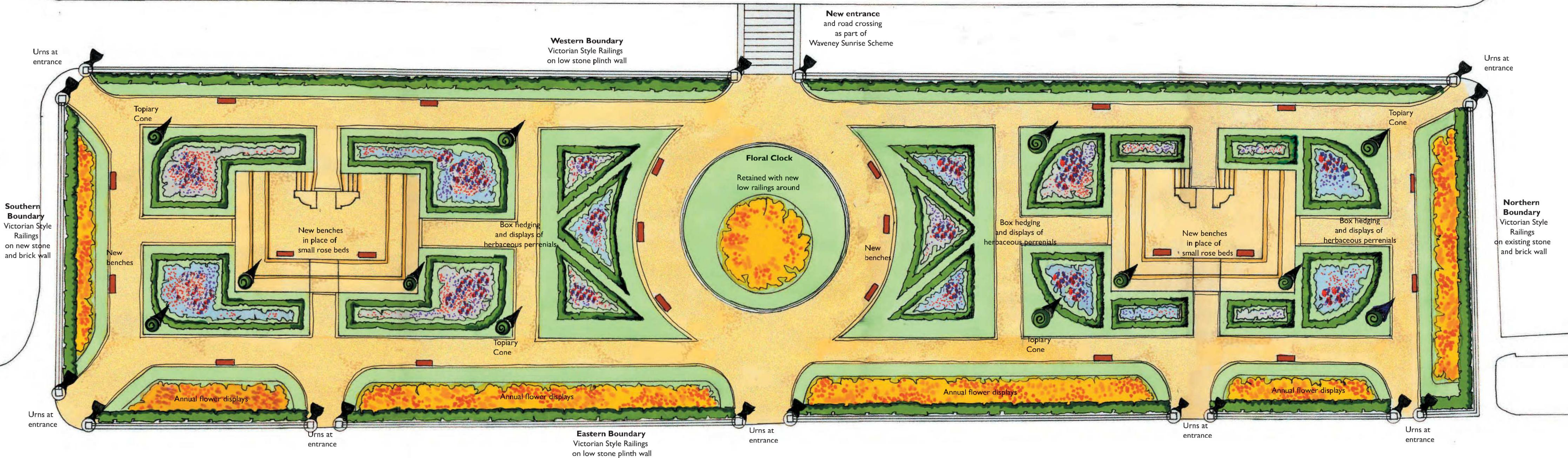
Existing northern wall to be retained



Artists Impression of Gardens used at Stage 1

THE GARDENS 1900's

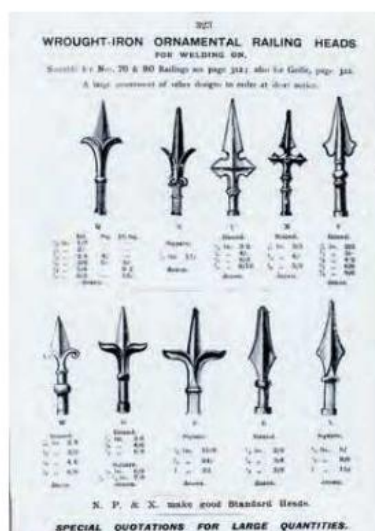
THE GARDENS TODAY



THE PROPOSALS



New High Quality Railings are proposed around all boundaries



New High Quality Wooden Benches - Memorial Plaques can be relocated.



New Urns at entrances



Box hedging and herbaceous perennials to give all round year display and structure



Topiary specimen plants



Box hedging and herbaceous perennials

