

# Item 7

DC/23/0234/FUL

Demolition of Outbuilding and Erection of Dwelling.

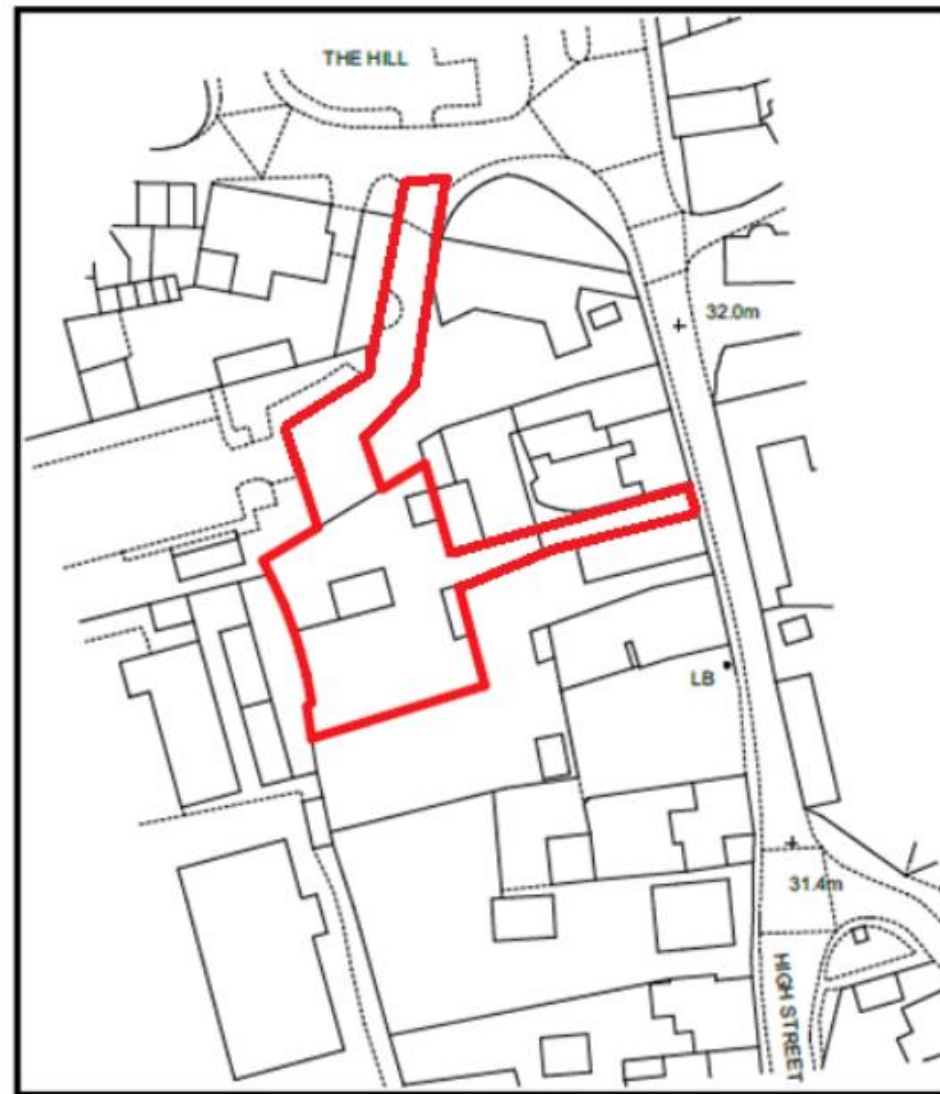
The Walled Garden, High Street, Wickham Market.



# Reason(s) for committee

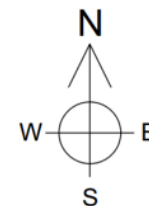
This proposal is before the committee because the site location plan includes land owned and managed by East Suffolk Council.

# Site location

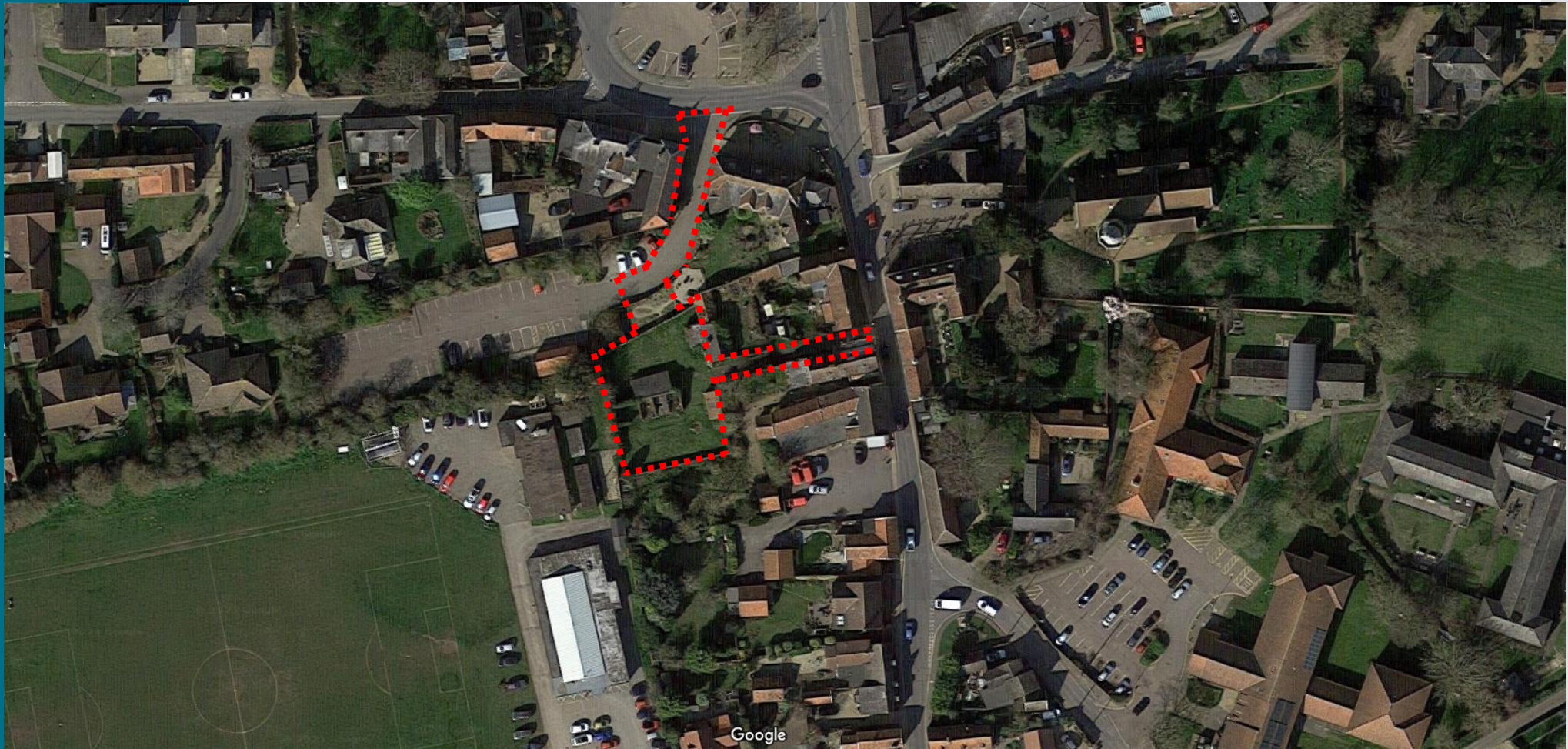


Location Plan

Scale: 1:1250



Aerial  
view



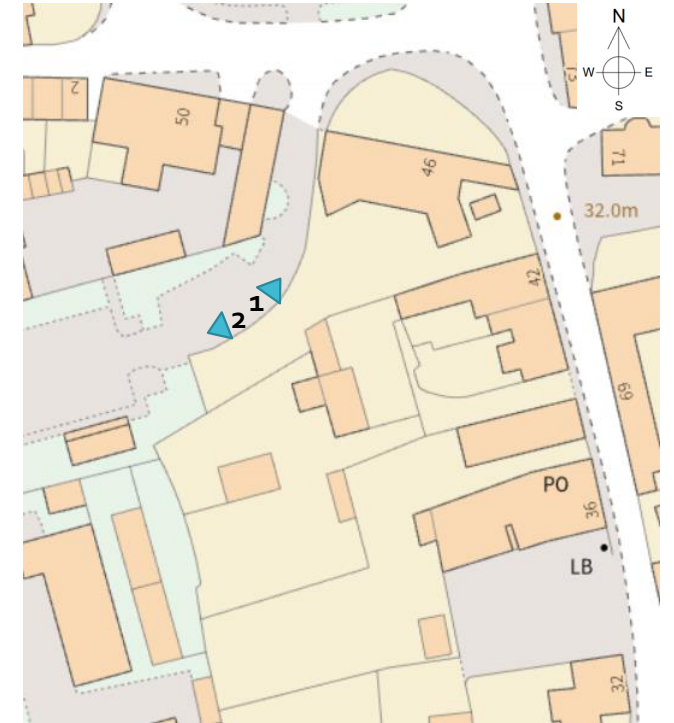


# Photos

1



2

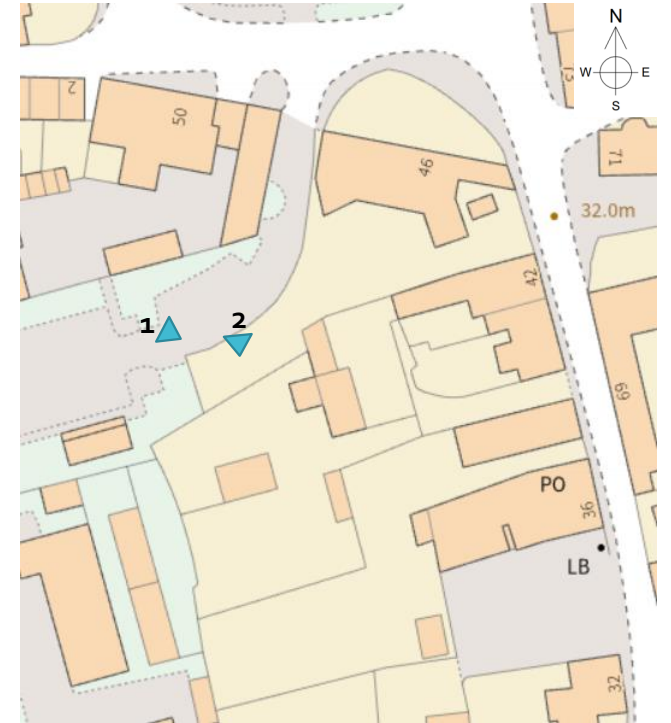


# Photos

1



2



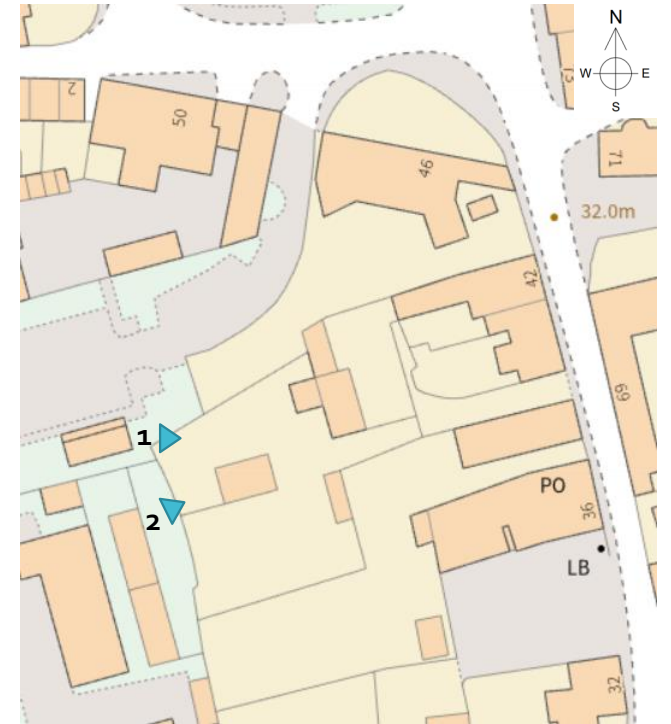


# Photos

1



2

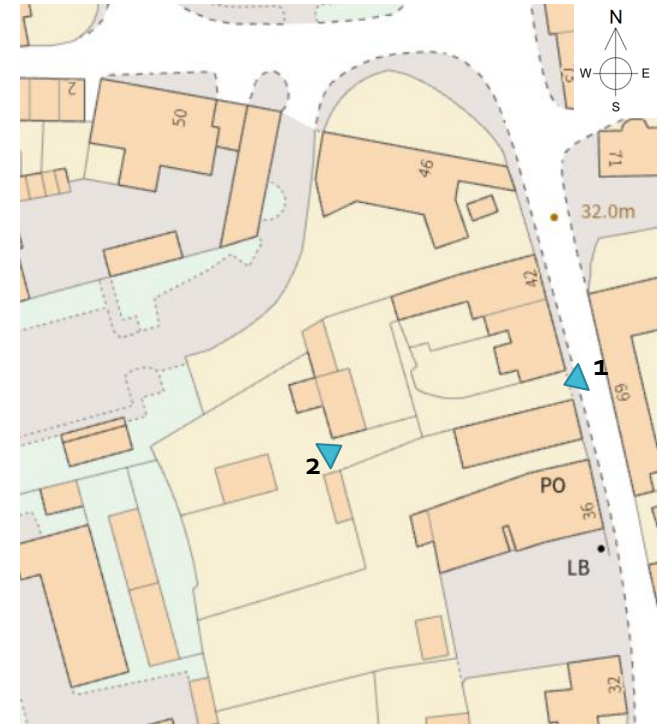


# Photos

1



2



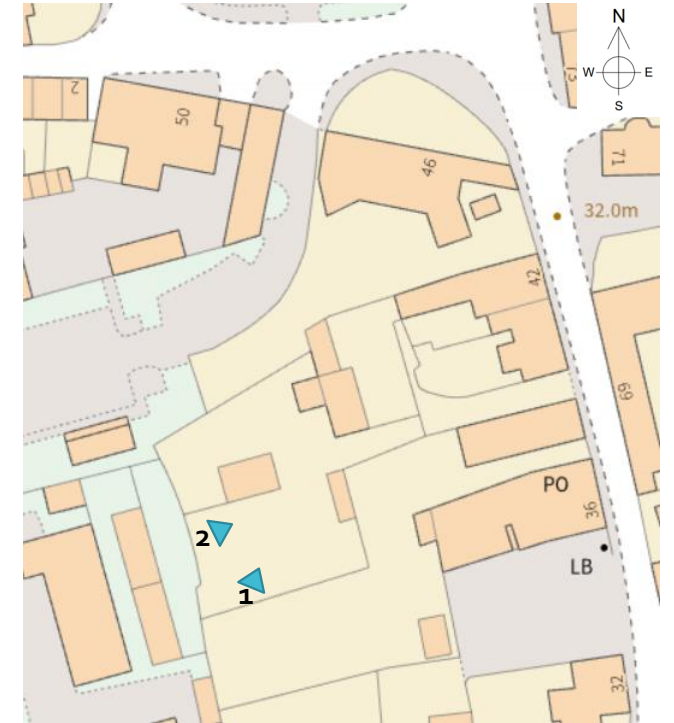


# Photos

1



2



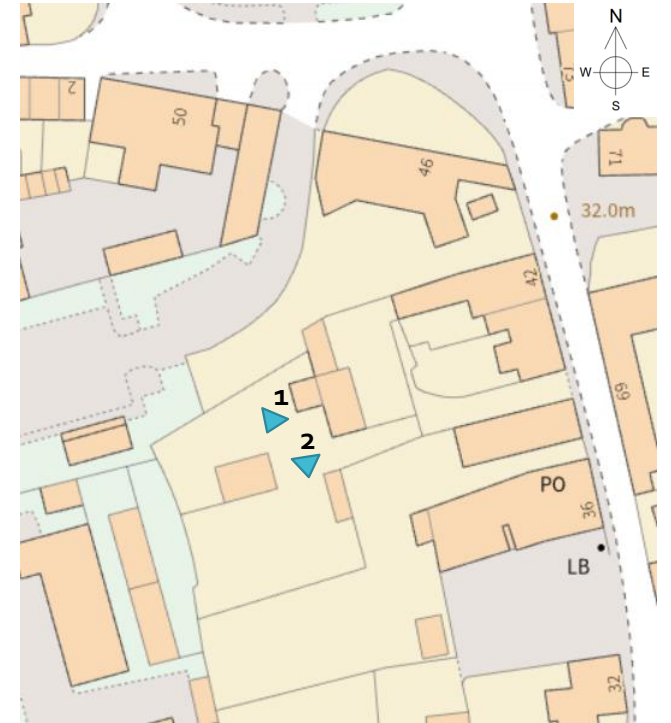


# Photos

1

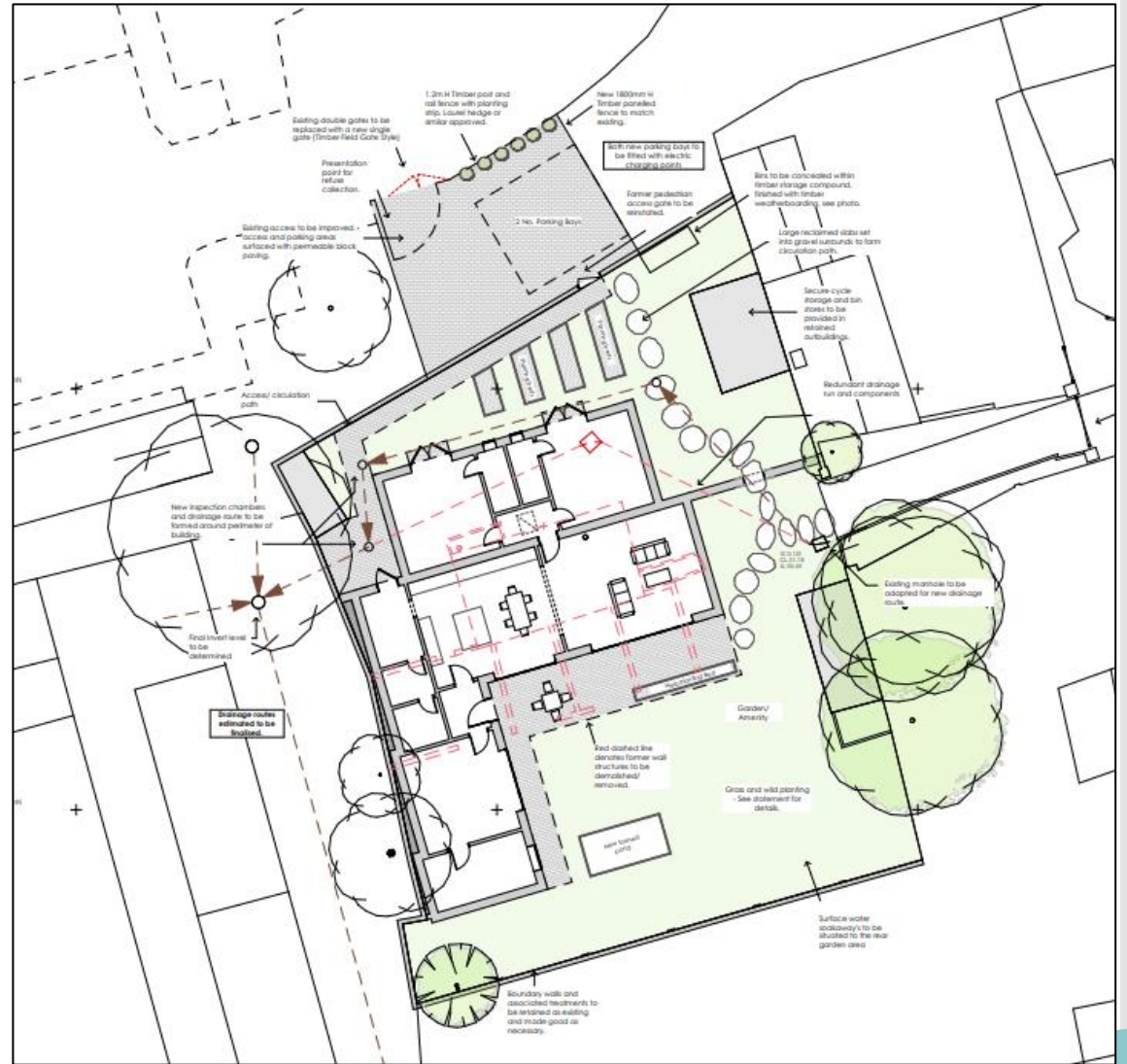
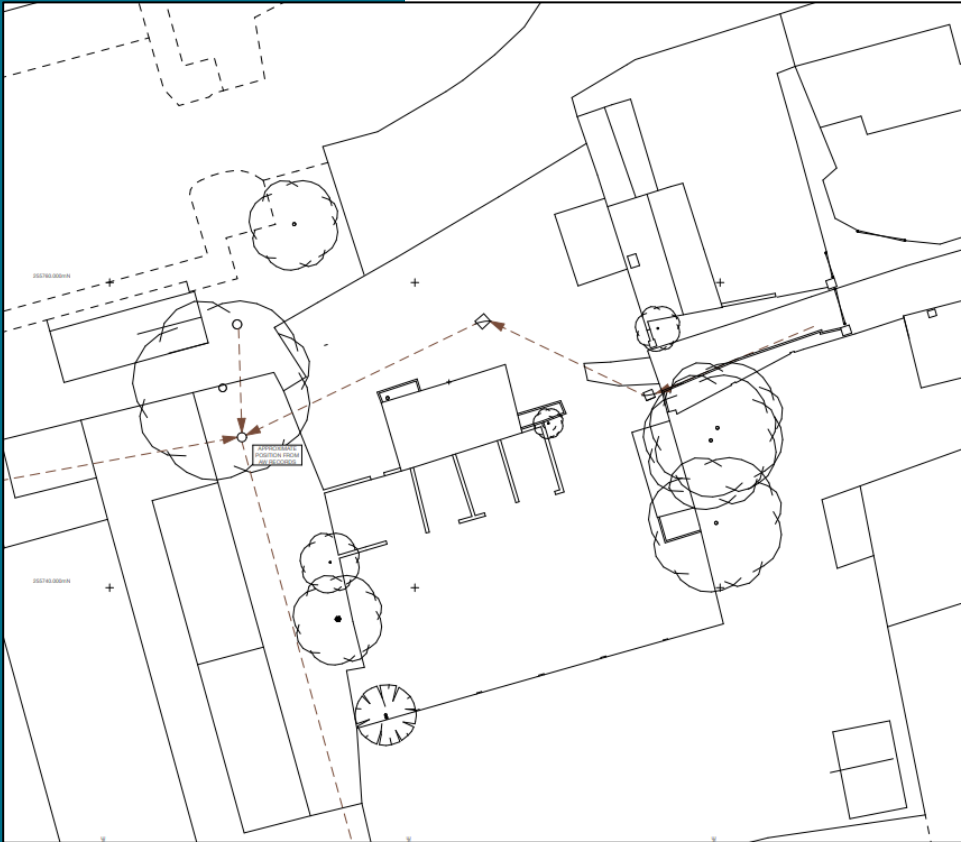


2





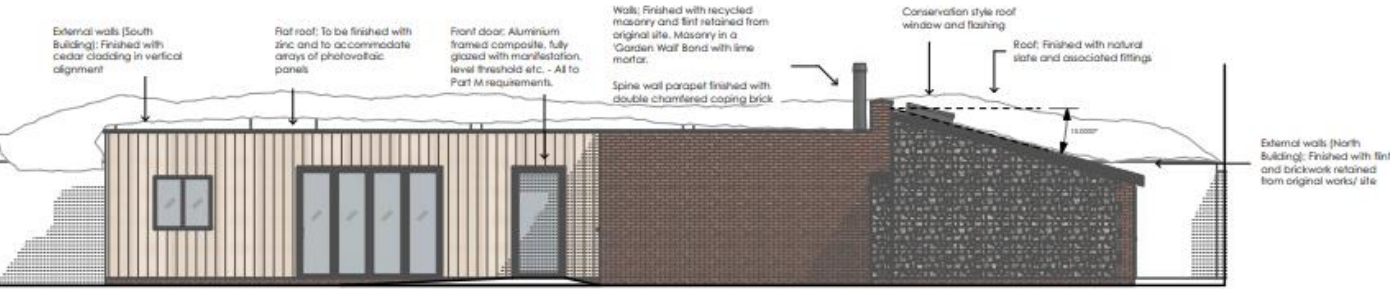
# Block plans



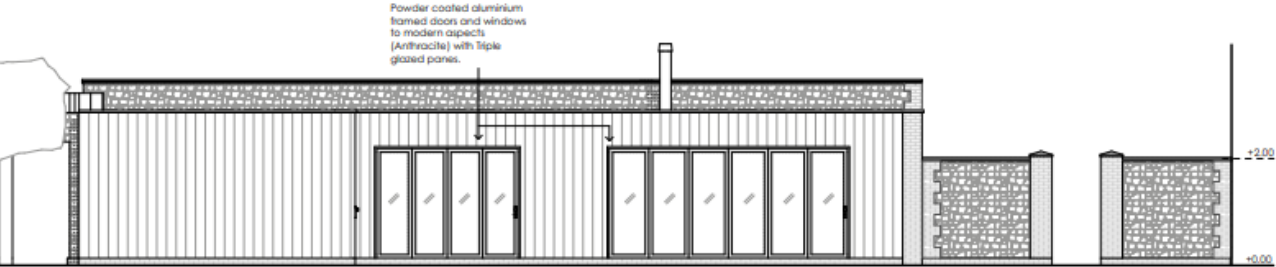
# Elevations



North Elevation



East Elevation



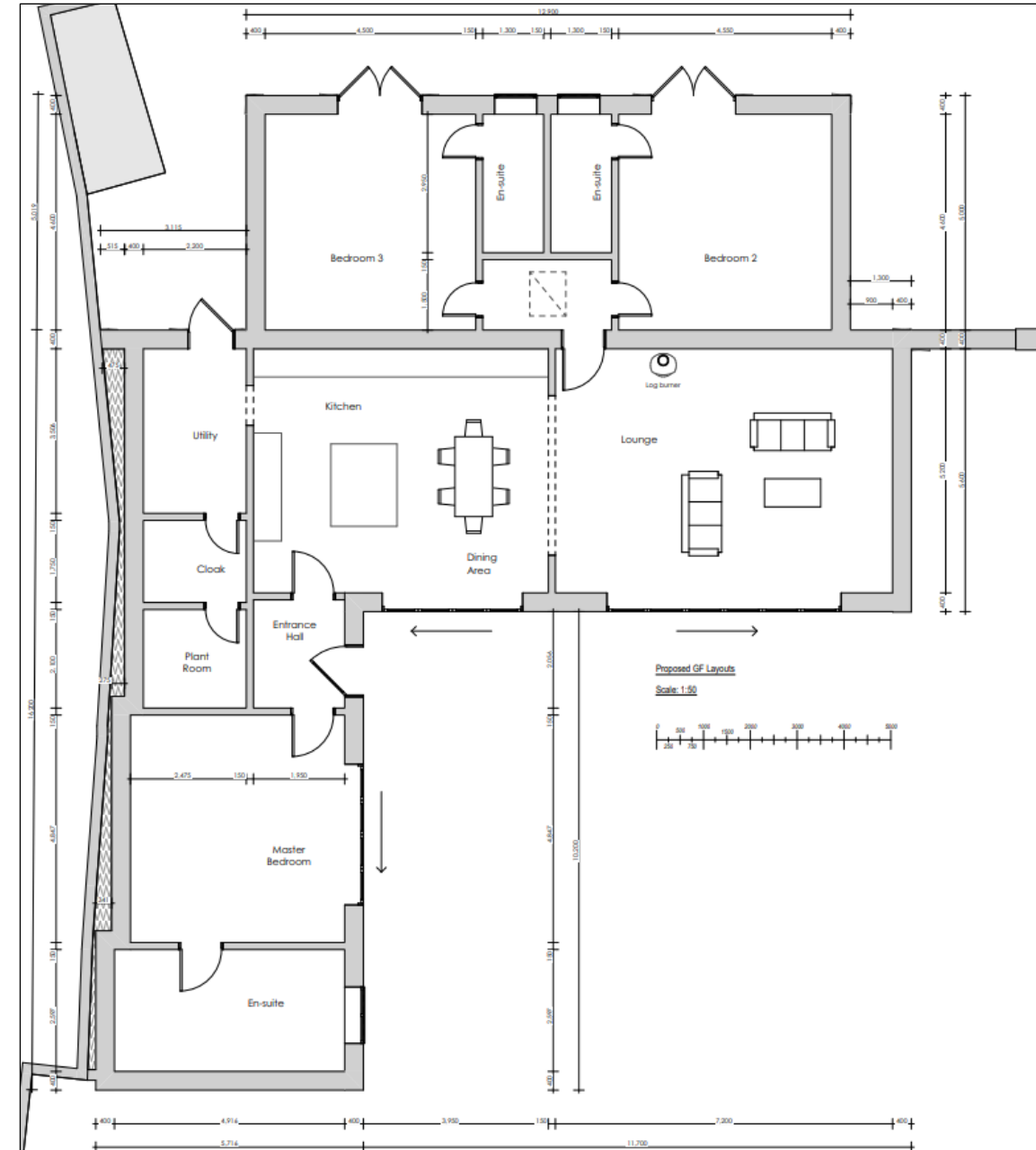
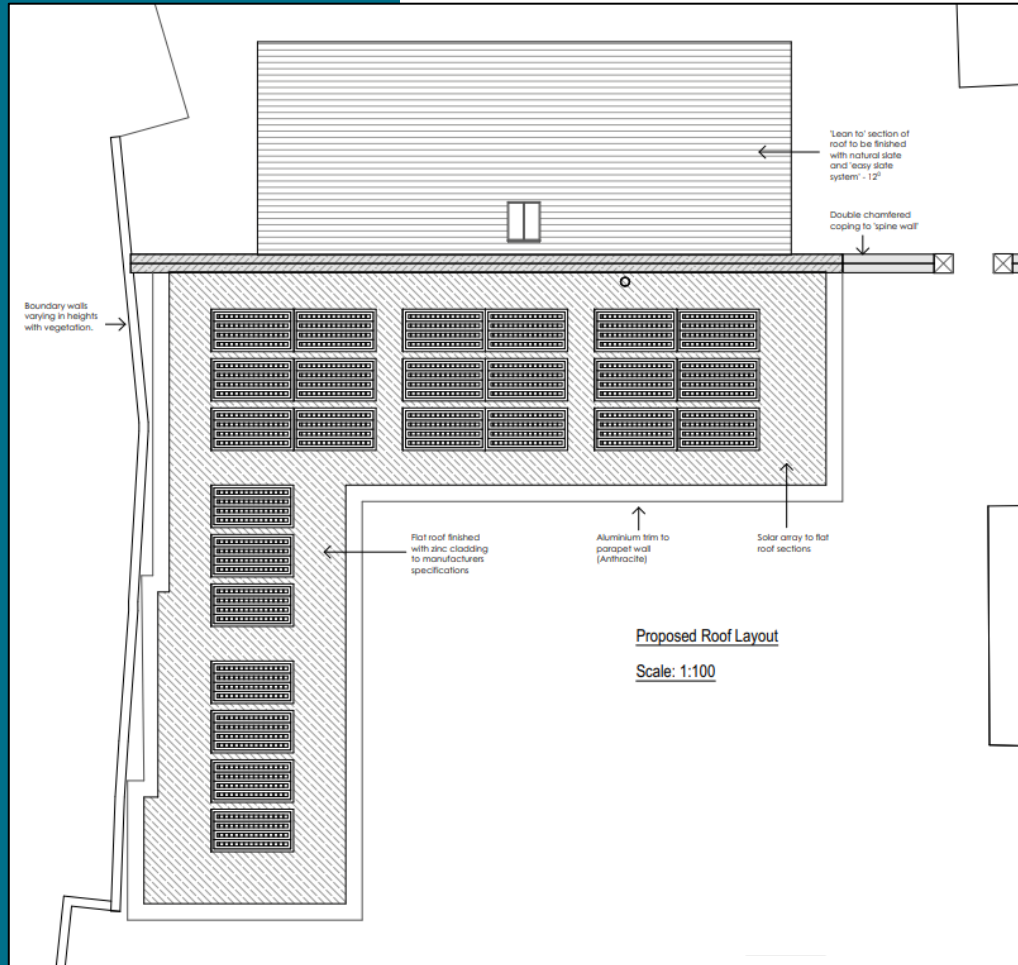
South Elevation



West Elevation/ Section



# Roof and floor plans




# Visualisations





# Material considerations

- Design
  - Heritage
  - Access
- 
- A teal-colored decorative shape, resembling a stylized wave or a corner element, is positioned in the bottom right corner of the slide.

# Recommendation

**Approval** subject to the following conditions:

1. Three year time limit
2. Approved drawings
3. Submission of materials details
4. Submission of contamination assessment
5. Submission of remediation method statement (Subject to condition 4)
6. Implementation of approved remediation strategy (Subject to condition 4)
7. Submission of contamination validation report (Subject to condition 4)
8. Standing condition concerning unexpected discovery of contamination
9. Delivery of parking/ access prior to first use
10. Delivery of cycle parking prior to first use
11. Delivery of refuse/recycling storage and presentation areas prior to occupation
12. Submission and delivery of Ecological Enhancement Strategy prior to commencement
13. Submission of Tree Protection Plan and Arboricultural Method Statement prior to commencement
14. Retention of existing trees
15. Implementation of approved landscaping scheme
16. Existing access of High Street to be pedestrian only
17. Submission of Construction Management Plan prior to commencement